

Jacobsen R-311 ROPS Cab

** Shown with optional components



Jacobsen R-311 ROPS Cab

This ROPS cab is designed and built to fit the Jacobsen R-311.

Designed and Built by:

Tektite Manufacturing Inc:

24157 Hwy 3

P.O. Box 639

Winkler, MB

R6W 4A8

Canada

PH: 204-331-3463

Fax: 204-331-4159

sales@tektite.ca

One year standard product warranty provided by Tektite.



Caution

** Please read installation instructions and follow all safety statements before attempting to install this product.

** This ROPS cab is heavy. An over-head hoist or high lift forklift will be needed to lift this cage over the machine. It is recommended that a minimum of two people participate during the installation procedure.

** A copy of this installation manual should be kept with the machine operating manuals.

Tektite Manufacturing Incorporated thanks you for purchasing a Jacobsen R311 ROPS cab! Tektite has worked very hard to design and build this ROPS product and we hope that it provides you with many years of protection.

Tektite's products are designed to provide safe and dependable service during operation when they are properly maintained according to the instructions. Please read this installation manual carefully before installing and using this product.

The photos/illustrations provided in this manual may not provide all the detail needed, and are for reference only.

All directions provided are from the reference point of the tractor seat facing the steering wheel. All left and right references are from this view point.

For reference, please fill in the information below. This will assist your dealer in providing service for this product. It is advisable that this information be provided to your insurance company as well in the event that the tractor is lost or damaged.

Vehicle Model: _____

Tektite Serial Number: _____

Date of Purchase: _____

Dealer Name: _____

Standard Parts List:

Description	Qty
Bolt, Hex, 5/8" x 3", Gr. 8, YD	4
Nut, Flange, 5/8", Gr. 8, YD	4
Washer, Heavy, 1/4" Flat	4
Bolt, Hex, 1/2" x 4 1/2"	2
Isolator (pre-installed)	4
Bolt, Hex, 3/8" x 3", YD	2
Coupler Nut, 3/8", 1 3/4" Long	2
Bolt, Flange, 1/2" x 1 1/2", Gr. 8, YD	11
Nut, Flange, 1/2", Gr. 8, YD	11
Deck Step Tube, 1" OD Round	2
Wire Connector, Loop, Yellow, 1/4"	1
Zip Ties, Standard	6
Bolt, Flange, 1/4" x 1/2"	6
Nut, Flange, 1/4"	6
Left 2-post Shield Weldment	1
Right 2-post Shield Upper	1
Right 2-post Shield Lower	1
Rear Hood Shield Bottom	1
Main Platform Floor mat	1
Side Platform Floor mat	1
NDAX, 1" x 1"	4 FT
Cab Lift Brackets	2
Front Bracket	1
Rear Brackets	L&R
Steps (traction tape pre-installed)	L&R

Optional Parts List Console Mount Turn Signals:

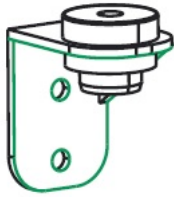
Description	Qty
Conduit Clamp	1
Screw, Philips, # 8 x 1"	1
Washer, Flat, Small, 1/8"	1

Optional Parts List Heater:

Description	Qty
Splicer, Radiator Hose, 1 1/4" ID (1 3/8" outer)	1
Hose Clamp, HS-24	2
Hose Clamp, HS-6	2
Heater Hose (pre-installed), 3/8" ID	30 FT
Fitting, 3/8 NPT x 3/8" Barb, Straight	2
Street Fitting, 3/8 x 3/8 x 3/8 NPT	1

Optional Parts List Air Conditioning:

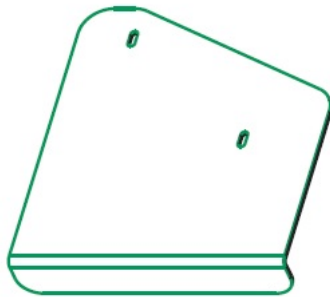
Description	Qty
Bolt, Hex, M10 x 100 FULL THREAD, Gr. 8.8	1
Nut, Flange, M10, Gr. 8.8	1
Bolt, Hex, M8 x 20, Gr. 8.8	2
Wire, Red, 10GA	8"
Shrink wrap for Wire, 1" long	2
Alternator Mount Bracket	1
Alternator Tensioning Bracket	1
Compressor Mount Tube Spacer (2 3/8")	1
Bolt, Hex, 3/8" x 4", Gr. 5	2
Nut, Flange, 3/8", Gr. 5, YD	3
Bolt, Hex, 3/8" x 2", Gr. 5	1
Compressor, Top Port	1
Main Drive Belt, 31/64" x 44 7/8" (25-9447)	1
Short Alternator Belt, 1/2" x 22" (4L220W)	1
Zip Ties, Standard	4
Female Bullet, Blue	1



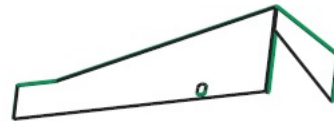
Rear
Brackets
L & R



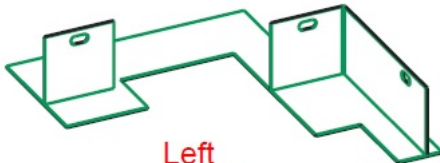
Front
Bracket



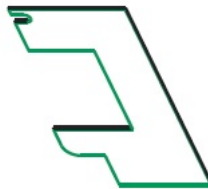
Step
Bracket



Rear Hood
Shield Bottom



Left
2-post
Shield



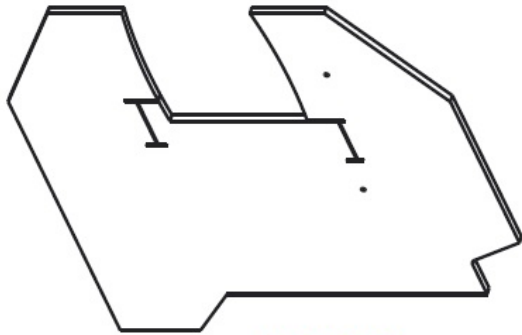
Right Shield
Upper



Right Shield
Lower



Deck Tube
Spacer



Main Cab
Floormat



Side Platform
Cab Floormat



Radiator
Splicer



Alternator
Bracket



Tensioner
Bracket



Tube Spacer

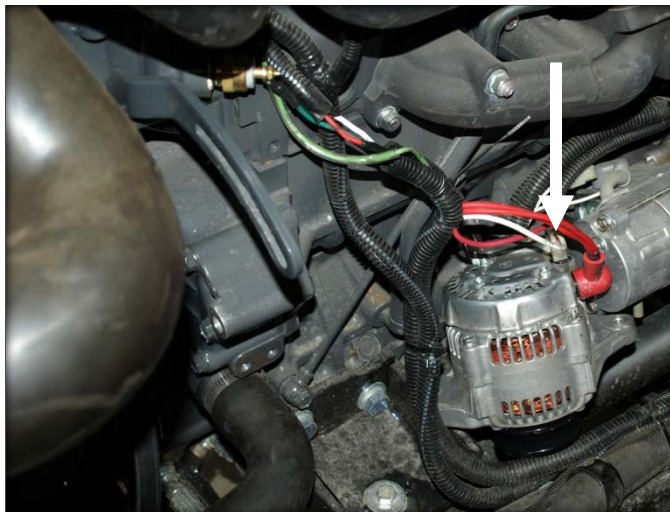
For cabs equipped with Air Conditioning Option, the following steps can be performed before the cab is installed.

Air Conditioning Install Instructions:

1. Un-bolt and remove the tractor alternator, spacer, fasteners and guard.



2. One wire on the alternator harness needs to be lengthened. Break the zip ties holding the harness in place to loosen up the harness, and then pull the red wire that goes to the white plug out. Cut that red wire and splice in the provided 8" 10GA wire by soldering in. Use the provided heat shrink to cover the two soldered ends.

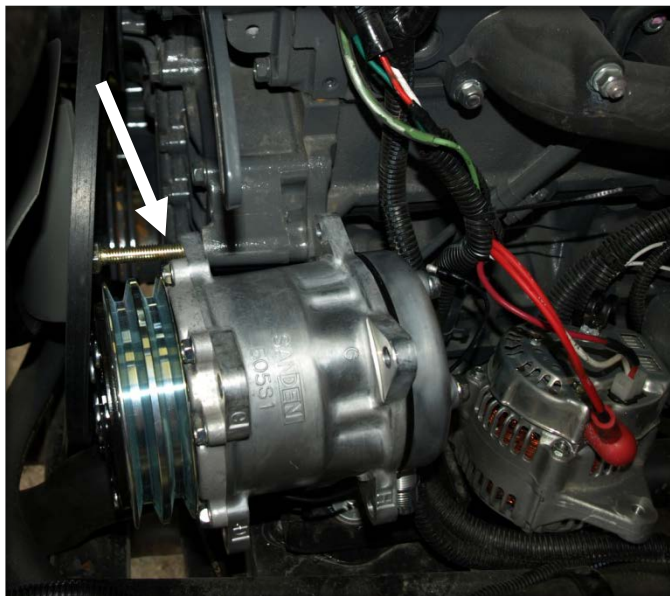


3. Take the alternator mount bracket and fasten to the engine block with the provided M8 x 20 mm hex bolts.

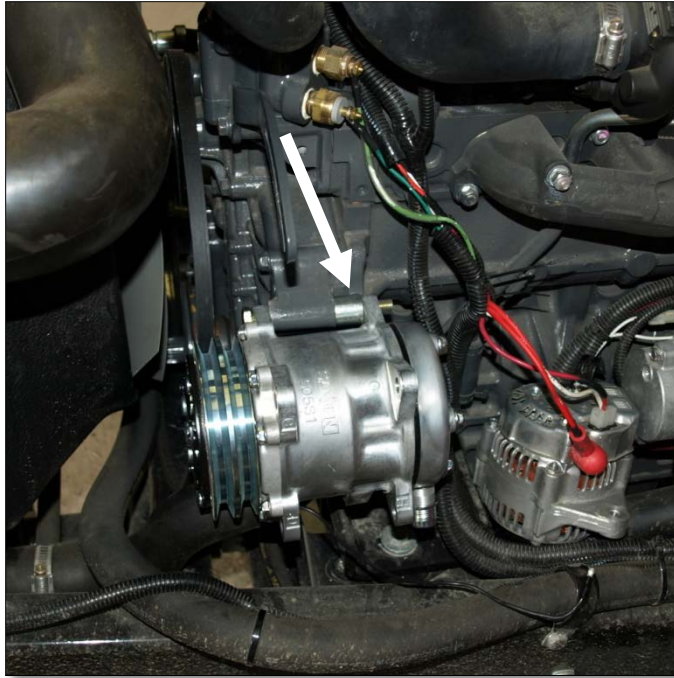


4. Remove the main drive belt and replace with the provided new main drive belt.

5. Insert the compressor over the alternator mount with the fill ports located as shown in the photo below. Take the full thread, M10 x 100 hex bolt and begin threading into mount port.



6. Tighten until the bolt approaches the outside of the block, then insert the alternator spacer removed earlier (13/16" in length). Continue to install the bolt until it comes out the other end of the compressor mounting ear, but DO NOT fully tighten yet.



7. Slip the short belt, 1/2" x 22", over the compressor.

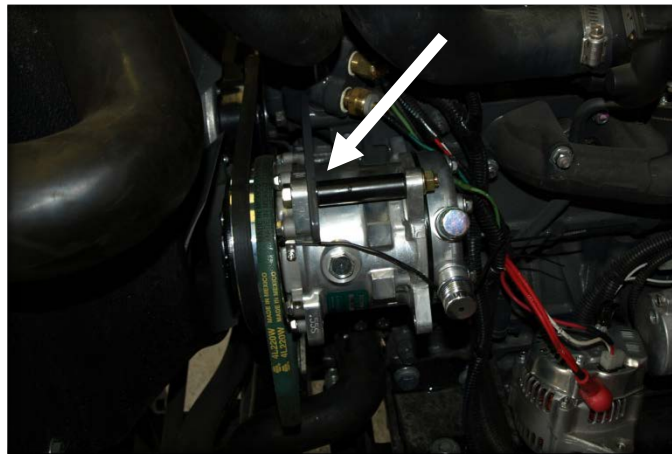


8. Install the nut at the end of the compressor bolt and loosely tighten only.

9. Slip main drive belt, 31/64" x 44 7/8", over the compressor. Note, initially this belt will be very snug.



10. Install the tube spacer (2 3/8" length) between the top tensioner plate and the rear compressor ears. Use the provided 3/8" x 4" hex bolt to slide through the ears, plate and tube. Note, it is snug and it may fit tightly. Loosely fasten this nut only.



11. Pull the compressor down as far as possible to tension belt. Tighten the M10 x 100 bolt first, then tighten the 3/8" x 4" bolt second.

12. Take the alternator and the provided 3/8" x 2" hex bolt and nut and fasten the alternator to the mounting bracket installed earlier. Hand tighten only!



13. Take the provided tensioner bracket for the alternator, and slide between the compressor ears and loosely fasten into place with the 3/8" x 4" hex bolt and nut provided.



14. Use the original alternator tensioning bolt for the tensioning fastener location.

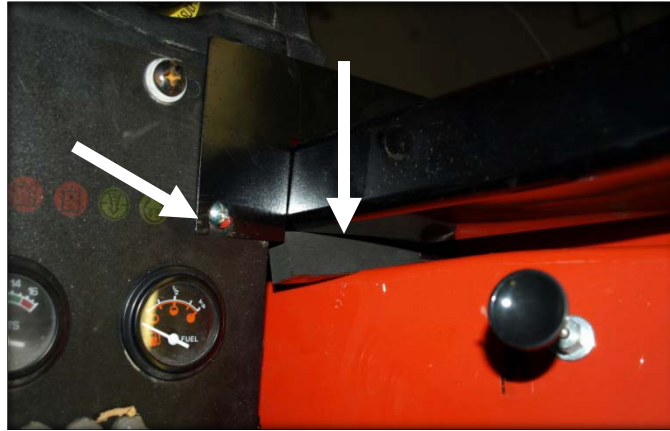


15. Apply belt tension, and then tighten the 3/8" x 2" bolt.

16. Please proceed with the cab installation now.

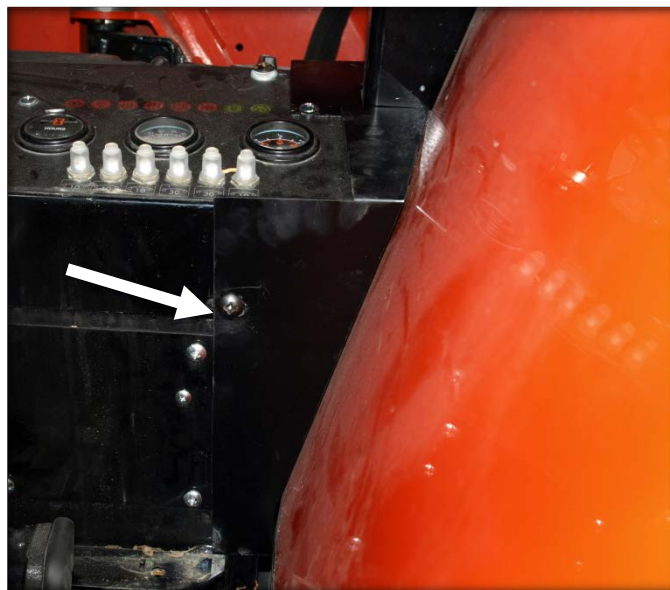
Cab Installation Instructions:

1. Un-bolt and remove the upper hoop of the 2-post ROPS. Remove the plates inside of the 2-post ROPS as well.
2. Un-bolt and remove the lower left member of the 2-post ROPS, temporarily.
3. Un-bolt the seat platform mounts on the right console side and then remove cotter pins to remove hinge from left side. Slide seat assembly forward.
4. Remove the left side pod from the tractor, will not be re-installed.
5. Loosen the bottom four bolts on the lower right member of the 2-post ROPS.
6. Take the 1" x 1" NDAX and install small pieces as shown behind the 2-post ROPS member on the right side.



7. Loosen the small screw above the fuel tank gauge. Take the provided flat seal plate and slide under the screw fastener and into the pocket around the 2-post ROPS. Tighten the screw once aligned. See above.

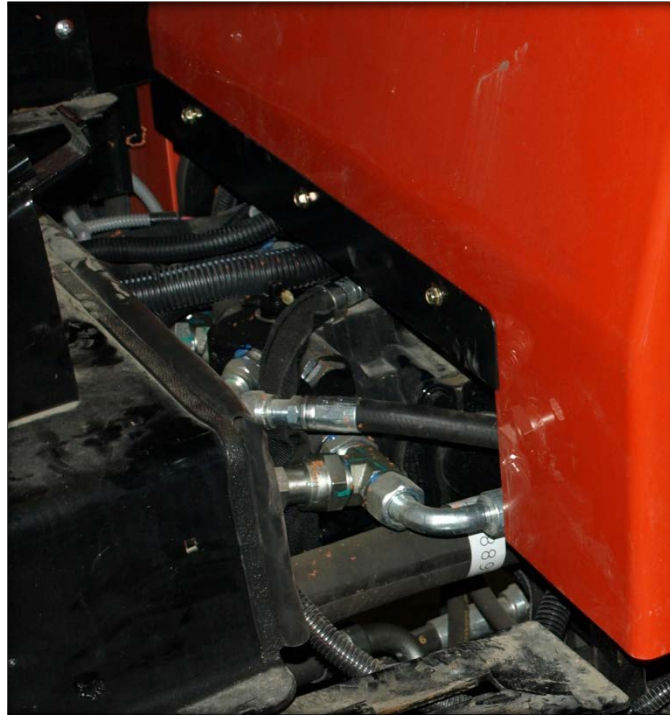
8. Take the bent right seal panel plate. Locate the rear-most bolt on the inner right side console and remove the fastener. Slide plate in place and fasten in place with the bolt removed earlier.



9. Re-tighten the lower 2-post ROPS member on the right side.

10. Take the flat loose shield and place at the bottom of the cowl behind the seat. The panel should be located low enough to ensure the seat box seals against the panel. Mark and drill three $\frac{1}{4}$ " holes using the shield as a guide.

11. Take three $\frac{1}{4}$ " x $\frac{1}{2}$ " flange bolts and nuts and fasten the shield into place.

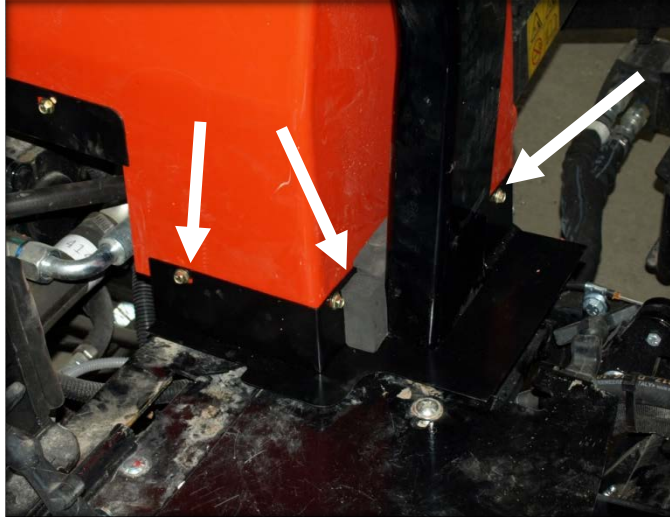


12. Take the 1" x 1" NDAX and install in the pocket as shown in the photo below behind the left lower 2-post ROPS member.



13. Re-install the lower left 2-post ROPS member.

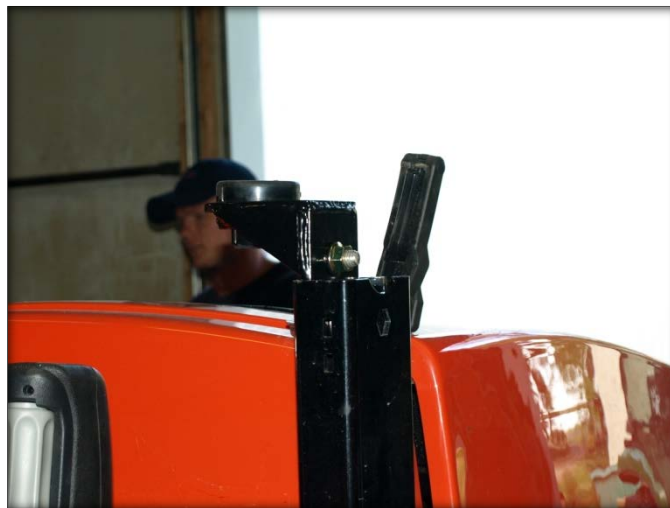
14. Take the lower left shield weldment and position against the 2-post ROPS. Ensure a good seal against the cowling. Use the shield as a guide, and mark and drill three $\frac{1}{4}$ " holes into the cowling.



15. Use the provided $\frac{1}{4}$ " x $\frac{1}{2}$ " flange bolts and nuts and fasten shield into place. Install the 1" x 1" NDAX as shown at the front corner to ensure a weather seal.

16. Re-install seat fasteners and pin hinge.

17. Take the left rear bracket and position so that mounting plate faces inwards. Slide in the hole of the lower 2-post ROPS and bolt to the inside of tube with the provided $\frac{1}{2}$ " x 1 $\frac{1}{2}$ " bolts and nuts. Loosely fasten only.



18. Repeat for the right rear bracket.



19. Locate the two $\frac{3}{8}$ " holes shown in the photo below. Drill out to $\frac{1}{2}$ ".

20. Take the front bracket and position it against the front and sides of the operator foot platform. Use the provided $\frac{1}{2}$ " x $1\frac{1}{2}$ " flange bolts and nuts and loosely fasten the middle of the bracket into place. Mark and drill five $\frac{1}{2}$ " holes into the operator platform at the other locations in the front bracket. Use the remaining $\frac{1}{2}$ " x $1\frac{1}{2}$ " bolts and nuts to bolt the bracket into place. Do NOT tighten yet.



21. Take the remaining 1" x 1" NDAX and install on the front platform as shown.



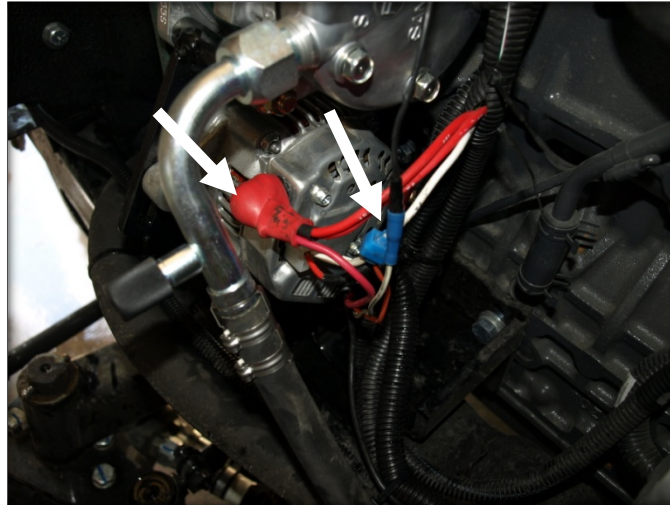
22. Un-hook the side door gas shocks and lift the left and right doors off of the pin hinges on the cab.
 23. Take the provided cab lift brackets and bolt to the weld nut located at the top inner corner of the b-post with the provided $\frac{1}{2}$ " x 4 $\frac{1}{2}$ " hex bolts.
 24. Use a lifting strap or chain to connect the shipping brackets to an over-head hoist or fork lift. Un-bolt the shipping brackets from the cab. Lift cab straight up just far enough to get cab off of shipping pallet. **Use bungee straps from the lift chains to the front mirror handle plate to ensure the cab lifts straight up and down. THIS IS VERY CRITICAL FOR EASIER CAB INSTALL!**
 25. Position tractor under the cab and slowly lower straight down until the isolators are contacting the mounting plates. Use the provided 5/8" x 3" hex bolts, heavy washer, and flange nut for each fastener in the order shown.
 26. Once all fasteners are started, the 5/8" bolts can have 205 ft-lbs of torque applied. The $\frac{1}{2}$ " front and rear bracket fasteners can have 105 ft-lbs of torque applied.
 27. Remove lift straps and lift brackets from cab.
 28. Re-install the cab doors.
- ** If cab has Steering Wheel Mounted Signal Lever installed, proceed with the following two steps, otherwise skip ahead.**
29. Take the turn signal lever and hose clamp included and attach to steering wheel as shown.



30. Connect the wire harness to the turn signal lever. Use provided screw and washer to fasten harness to front of the steering tower with the wire conduit clamp provided.



31. Route the electrical harness from the lower right C-post under the hood and into the engine bay. Connect the 10GA red wire to the alternator constant power source with the provided 1/4" loop connector. Shorten wire if necessary, then solder wire to connector. Connect the 10GA black wire to the tractor ground with the 1/4" loop connector provided. Shorten wire if necessary and then solder wire to connector. Connect the remaining orange wire to a switched 12v source on the alternator. Use a test light to verify, then solder wire directly to switched source.



**** If cab is equipped with a heater option, proceed with the following steps.**

32. Drain the engine antifreeze.

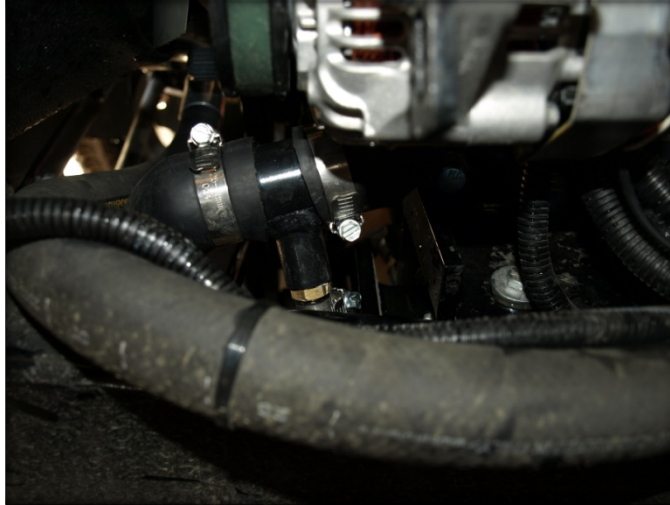
33. Locate the upper thermostat fittings on the right side of the engine on the thermostat housing. Remove both of the thermostat sensors along with the engine lift ear. Bottom sensor must be removed in order to provide clearance for install the street fitting.



34. Take the provided street fitting and install into open port. Install the thermostat fitting into the horizontal port at the end of the adapter fitting. Then install the 3/8NPT x 3/8" barb straight fitting into the open top port. Use a water sealant around the threads to ensure no leakage at fitting. This is the **PRESSURE FITTING**. Re-install lower thermostat sensor. Re-install engine lift ear bracket.



35. Locate the lower radiator hose. Cut out a short 2" section of hose. Take the provided hose splicer and install with the HS-24 hose clamps. This is the **SUCTION FITTING**.



36. NOTE: The pressure host is the one that was closest to the rear window glass, the suction hose is furthest out. Route the heater hoses from the lower left C-post under the hood and into the engine bay. Use provided zip ties to secure hoses to tractor.

37. Connect the pressure hose to the pressure fitting installed earlier with the provided HS-6 hose clamp.

38. Route the suction hose to the lower radiator hose fitting and connect with the provided HS-6 hose clamp.

39. Ensure fittings are tightened and then begin re-filling engine antifreeze.

40. Open radiator cap and place funnel in opening. Fill funnel with antifreeze.

41. Open cab heater control to full heat, start engine, turn fan switch to high. Run at high RPM in order to get thermostat to cycle a few times in order to allow more coolant into system and to purge air out of the system. After thermostat opens, re-fill funnel and continue running at high RPM. When system is successfully purged, HOT air will blow from air vents in cab. NOTE: please ensure adequate fresh air ventilation in the work space you are using while running the engine, as carbon monoxide from engine exhaust is deadly.

42. Re-install radiator cap.

If cab is equipped with air conditioning option, proceed with the following steps to finish install.

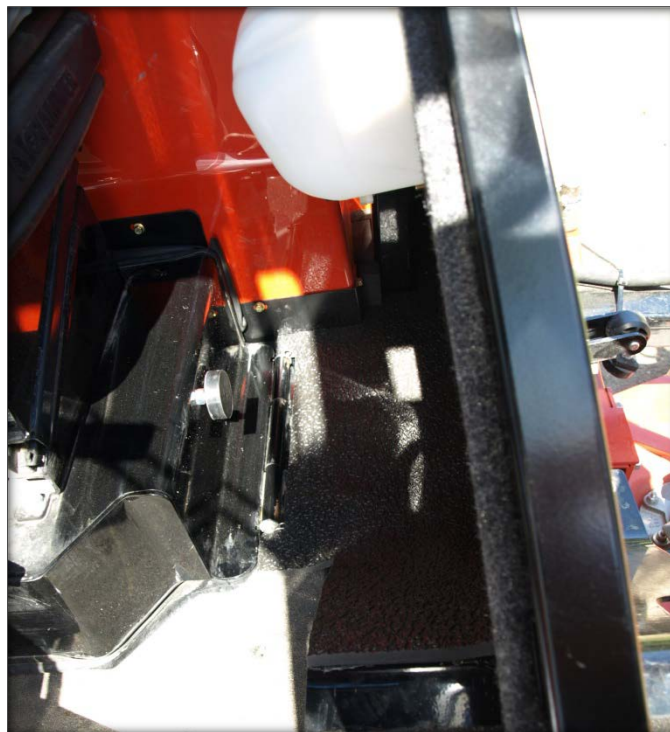
43. Route the air conditioner hoses with the white compressor clutch wire, from the right C-post under the hood and towards the compressor installed earlier. Use provided zip ties to secure hoses to tractor.

44. Connect the hoses to the compressor. Ensure the o-rings are properly seated onto the compressor so that there will be no leaking of Freon.

45. Connect the white compressor clutch wire to the compressor.

NOTE: The air conditioner is now ready to be pressurized by a licensed air conditioning install technician. The compressor is normally pre-filled with oil. The system requires 2 lbs of R-134a refrigerant.

46. Take the rear floor mat piece and position on foot platform on left rear side of platform. Ensure good seal all around, notch if necessary. Glue into place with aerosol glue, 3M high strength 90 is recommended.



47. Take the main centre floor mat and position onto floor of cab. Ensure the matting clears all moving pedals and doesn't restrict any movement, notching if necessary. Glue into place.



48. To ensure a proper seal, use a black silicone sealant around all small open cracks between the cab weather stripping and tractor components.

49. Take one of the deck stop tubes, 3/8" x 3" hex bolts, and 3/8" coupler nuts and go to left wing deck. Remove the bumper pad from the inner front wheel. Turn coupler nut onto bumper pad bolt. Insert 3/8" x 3" bolt from bottom of wheel mount and into the tube provided. From the top, insert coupler nut/bumper pad assembly down into tube and to use as the nut for the lower assembly. Tighten.



50. Repeat for the right wing deck.



51. Take the left step bracket and move to operator platform at front left corner of cab. Remove two factory bolts and nuts and slide step into place. Use factory hardware to fasten step into place. Slide step against platform then tighten bolts.



52. Repeat for the right step.



Jacobsen R311 Turbo ROPS Cab

** Shown with optional equipment



Jacobsen R311 Turbo ROPS Cab

This ROPS cab is designed and built to fit the Jacobsen R-311 Turbo.

Designed and Built by:

Tektite Manufacturing Inc:

24157 Hwy 3

P.O. Box 639

Winkler, MB

R6W 4A8

Canada

PH: 204-331-3463

Fax: 204-331-4159

sales@tektite.ca

One year standard product warranty provided by Tektite.



Caution

** Please read installation instructions and follow all safety statements before attempting operating this ROPS product.

** A copy of this operator manual should be kept with the machine operating manuals.

** If this manual is lost, please contact your local Jacobsen dealer for a replacement.

Tektite Manufacturing Incorporated thanks you for purchasing a Jacobsen R311 Turbo ROPS cab! Tektite has worked very hard to design and build this ROPS product and we hope that it provides you with many years of ROPS protection.

Tektite's ROPS products are designed to provide safe and dependable service during operation when they are properly maintained according to the instructions. Please read this operator manual carefully before using this ROPS product.

The photos/illustrations provided in this manual may not provide all the detail needed, and are for reference only.

All directions provided are from the reference point of the tractor seat facing the steering wheel. All left and right references are from this view point.

For reference, please fill in the information below. This will assist your dealer in providing service for this ROPS. It is advisable that this information be provided to your insurance company as well in the event that the tractor is lost or damaged.

Vehicle Model: _____

ROPS Serial Number: _____

Date of Purchase: _____

Dealer Name: _____

Limited Warranty

Tektite Manufacturing Inc. (Tektite) warrants to the original purchaser (the "Claimant"), that Tektite products will be free from defective materials or workmanship, under normal use and service, for a period of (1) full year (or 1500 hours, whichever is less) from the original invoice date. Tektite's liability under this Limited Warranty is limited to the repair or (at the discretion of Tektite) the replacement of those components of its products, which were manufactured by Tektite that are defective in materials or workmanship. Tektite shall have no liability under this Limited Warranty unless Tektite is notified of the defect during the stated Warranty Period.

All returns require a Returned Material Authorization Number (RMA#). Warranty claims must be submitted to Tektite at 1-204-331-3463 prior to written authorization. All warranty work not pre-authorized by Tektite will not be covered by this warranty agreement. Claimant must arrange shipping of the returned and repaired or replaced product or component from Tektite plant in Winkler, Manitoba at the Claimant's own risk and expense. Tektite must receive all returns within (30) days of issuance of a RMA#. Limitations and Exclusions: Tektite has no responsibility to a Claimant under this Limited Warranty or on any other basis for any of the following:

- a) defects caused, in whole or in part, by accident or misuse, negligence or failure to maintain the product or component ;
- b) products or components sold to a customer on an "as is" basis;
- c) wiper blades, light bulbs, fuses, clear vinyl or other consumables;
- d) glass where the point of failure has not been preserved intact and delivered to Tektite for analysis of the cause of the failure;
- e) products or components which have been modified after shipping from Tektite to its customer;
- f) transportation charges for returned, repaired or replacement items;
- g) defects that are subject of an Tektite initiated recall where the Claimant fails to comply with the terms of the recall notice that comes to the attention of the Claimant;
- h) components of Tektite products that are manufactured by third parties (Tektite's only obligation in relation to such components shall be to accord to the Claimant the benefit of any transferable warranty accorded to Tektite by third party manufacturer);
- i) defects in workmanship or materials in products or components that are repaired or replaced by Tektite unless Tektite is notified of the new defect within the Warranty Period that applied to the original product or component that has been repaired or replaced;
- j) defects that result, in whole or in part, from inadequate engineering or specifications provided to Tektite by its customer;
- k) any actual or alleged deficiency in technical or engineering services or advice provided by Tektite to its customer whether provided for valuable consideration or otherwise;
- l) consequential damages, or any other damages whether foreseeable or not, resulting from the defect or any delay in remedying the defect; and
- m) any breach or alleged breach of any implied warranty of merchantability or fitness for particular purpose of use;
- n) defects or part failure due to misuse or failure to follow recommended cab installation procedures;
- o) travel expenses, including mileage.

This Limited Warranty expresses the entire obligation of Tektite, its officers, directors, agents and employees, to its customer or any Claimant in respect of any defect in workmanship, or materials of any product or component sold or manufactured by Tektite whether on grounds of breach of contract, negligence or other tortious liability, breach of express or implied warranty or other basis in law of any jurisdiction.

Acceptance by a customer of delivery of products of Tektite constitutes acceptance of this Limited Warranty in lieu of all other warranties express or implied including without limitation all implied warranties of merchantability or fitness for particular purpose or use and constitutes acceptance by customer of the exclusions and limitations of the liability of Tektite set out above.

*Labor rate fixed at a maximum of \$75.00 per hour (U.S.) and \$75.00 per hour (CDN) based on Tektite determination of applicable hours.

Safety Precautions

Safety First

Read these instructions carefully. It is essential that you read the instructions and safety regulations before you attempt to assemble or use the features that are on this cab/ROPS.

Danger: Indicates an immediate hazardous situation which, if not avoided, will result in death or serious injury.

Warning: Indicates a potentially hazardous situation which, if not avoided, may result in death or serious injury.

Caution: Indicates a potentially hazardous situation which, if not avoided, may result in minor or moderate injury.

Caution: Raising wing decks with side doors and side windows open can cause door glass to break!

Important: Indicates that cab or property damage may result if instructions are not carefully followed.

NOTE: All products are designed to give safe, dependable service if they are operated and maintained according to instructions. It is the owner's responsibility to be certain anyone operating this product reads this manual, and all other applicable manuals, to become familiar with this cab and all safety precautions. Failure to do so could result in serious personal injury or cab damage. If you have any questions, consult your dealer. Read and understand this manual before operation.

NOTE: A safe operator is the best assurance against accidents. All operators, no matter how experienced they may be, should read this operator manual and all other related manuals before attempting to operate features in this cab/ROPS and operate the base tractor. Please read the following section and pay particular attention to all safety recommendations contained in this manual and those labelled on the cab and on the tractor.

General Safety

1. Never let an unqualified or untrained driver operate the mower.
2. Keep a fire extinguisher, with ABC rating securely fastened in the ROPS. Maintain it and be familiar with its use.
3. Do not carry passengers.
4. Never operate the mower in a closed building for a prolonged period. Ensure adequate ventilation is present, as engine exhaust fumes are poisonous and can kill.
5. Always keep sleeves, jackets or other loose clothing relatively tight and belted. Loose clothing may catch on moving parts and result in severe personal injury or death.
6. Provide a first-aid kit, securely attached inside of the ROPS for use in case of accident.
7. Never jump from the mower. There is a danger of tripping or falling on protruding parts.
8. Use steps and hand holds when mounting and dismounting the mower, or for servicing components too high to reach from the ground.
9. When seated in the ROPS, fasten seat belt before starting the engine. A proper seat belt must be worn at all times when using a ROPS.
10. Safety devices and shields are intended to protect operators from injury or death. Under no circumstances should they be modified, disabled or removed.

Operating Safety

1. Always operate the mower controls while sitting in the operator's seat.
2. Lock seat in position and buckle seat belt before operating the mower.
3. Avoid abrupt sharp turns at high speeds.
4. On sloped terrain, do not make sharp turns as machine stability could be compromised.
5. Operate the mower smoothly, avoid abrupt starts and stops.
6. Keep all shields in place when operating the mower.
7. Do not operate the mower when you are tired, sick, or impaired.
8. Never operate the mower in confined areas; visibility next to the tractor is reduced. Injury to bystanders or damage to the ROPS or equipment may result.

Safety

Carefully review the procedures given in this manual and the mower operator's manual with all operators annually. It is important that all operators become familiar with, and follow safety precautions. Operating instructions must be given to everyone using the tractor before operation and at least once yearly thereafter in compliance with OSHA Regulations 1928.57 (United States).

Safe Operation on Rough Terrain

1. Drive the mower slowly on hillsides and curves to eliminate the danger of tipping. Avoid slopes which are too steep for safe operation. Avoid sharp uphill turns.
2. Always drive slowly enough over rough ground or obstructions. Drive at speeds slow enough to ensure your safety.
3. When driving out of a ditch, gully, or up a steep hillside, engage the clutch slowly. Avoid sharp uphill turns.
4. When descending steep grades, select a sufficiently low gear to maintain control with minimum use of braking.
5. Use caution when driving near the edge of a ditch or gully. It may cave in, causing the mower to roll over.
6. Be alert when operating near trees, slopes and around obstructions. Tree branches can cause damage to ROPS components.

Maintenance Safety

1. Remove mud, crop residue, chains, and tools from steps and operator's platform. They may interfere with pedal operation or entry/exit from mower.
2. When servicing components are too high to reach from the ground use steps and handholds. Do not use fenders or shields that are not designed as steps.

Safe Highway Operation

1. Before operating the mower on, or near, public roadways check with your local authorities for any local regulations that will affect you.
2. Equip towed implements with slow moving vehicle (SMV) signs when traveling on public roads.
3. Install additional lights on implement rear to safeguard against rear end collisions.
4. Use hazard warning flashers as required by law when transporting or driving on public roads. If the mower had warning flashers removed when mounting the ROPS, they must be replaced prior to operation on public roads.
5. Keep to the right, yielding right-of-way traffic, especially if pulling implements. Pull off the road and stop to allow motorists to pass. Drive on the road shoulder, if permitted by law.
6. Use extreme caution when pulling heavy loads at road speeds. Avoid hard application of the mower brakes at high speed.
7. Always drive slowly near curbs, approaches or ditches.
8. If equipped, ensure headlights are aligned so they will not blind the operator's of oncoming vehicles. If the mower is not equipped with turn signals and law requires them, install them prior to operating on or near public roads.

9. Use your turn signals, checking for traffic well in advance of turning. If the mower is not equipped with turn signals and law requires them, install them prior to operating on or near public roads.

Safety Decals

1. Keep decals clean. Remove dirt with a wet clean cloth when necessary.
2. Replace safety decals if destroyed, missing, painted over or unreadable. If any safety decals are covered or obscured when the ROPS is mounted, it is recommended that you purchase replacement decals from the mower manufacturer. Mount them in a readable location at, or near, their original location before operating the mower.
3. New ROPS decals and mower decals are available from your mower dealer.

ROPS Safety

1. Install the ROPS in accordance with Tektite mounting instructions. Failure to do so may affect the ROPS ability to withstand a roll over.
2. If the ROPS is subjected to alteration, structural damage or involved in an over turn accident, the entire structure must be replaced. Failure to do so may result in injury or death in the event of a roll over.
3. If the mower is not equipped with seat belts, purchase approved seat belts from the mower manufacturer or Tektite prior to operating the mower.
4. Always fasten seat belts prior to operating the mower.
5. Always operate the mower from the operator's seat.
6. Remove mud, crop residue, chains and tools from steps and operator's platform. They may interfere with pedal operation or entry/exit from the mower.
7. Remove all loose chains, tools, and equipment from the operator's platform. Failure to do so may cause injury or death in the event of a roll over.
8. Do not install the ROPS on a mower model that the ROPS is not designated for (compatible mower designations are printed on the ROPS serial number plate). The ROPS is designed specifically for individual models to ensure ROPS requirements will be met. Installing the ROPS on a non designated mower may result in injury or death.

Emergency Exits

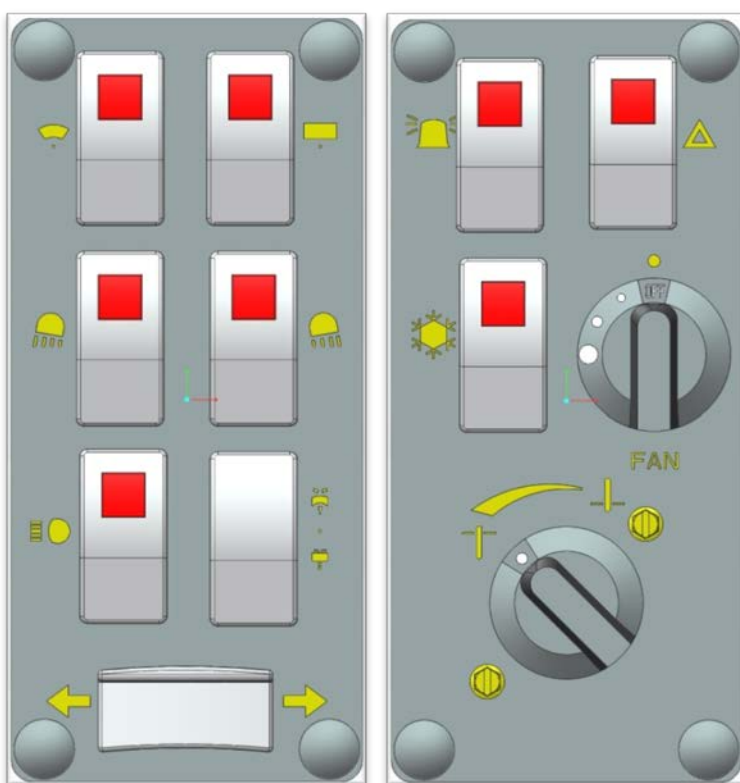
This ROPS cab has 2 exits, which may be used in an emergency: left and right side doors.

Operating Instructions

Important

The following section locates, identifies and briefly describes the functions of all cab controls. All operators should familiarize themselves with control location and function prior to operating the mower. Failure to do so may result in unsafe operation of the mower and possible injury or death to operators and bystanders.

There are two switch plates located in the headliner. The following switches are available and their functionality is described.



Left Switch Plate

1. Front Wiper Rocker Switch (standard)

Low position: Off

High position: On

Note: indicator light activates when wiper is on.

2. Rear Wiper Rocker Switch (optional)

Low position: Off

High position: On

Note: indicator light activates when wiper is on.

3. Front Work Light Rocker Switch (optional)

Low position: Off

High position: On

Note: indicator light activates when work lights are on.

4. Rear Work Light Rocker Switch (optional)

Low position: Off

High position: On

Note: indicator light activates when work light is on.

5. Head Lights Rocker Switch (optional)

Low position: Off

High position: On

Note: indicator light activates when head lights are on.

6. Front and Rear Washer Rocker Switch (optional)

Low position: Momentary – On Rear Washer

Middle position: Off

High position: Momentary – On Front Washer

7. Turn Signal Rocker Switch (optional)

Left position: On

Middle position: Off

Right position: On

Right Switch Plate

1. Beacon Rocker Switch (standard)

Low position: Off

High position: On

Note: indicator light activates when beacon is on.

2. Hazard Rocker Switch (optional)

Low position: Off

High position: On

Note: indicator light activates when 4-way flashers are on.

3. Air Conditioner Rocker Switch (optional)

Low position: Off

High position: On

Note: indicator light activates when air conditioner is on.

4. Fan Rotary Switch (optional)

Indicator mark above switch indicates whether fan is operational or not.

5. Temperature Control Rotary Switch (optional)

Indicator mark at lower left corner indicates current temperature setting. Rotate to increase heat output or to decrease heat output of heating system. When air conditioner is being used, it is recommended that the switch be at maximum cooling position.

Cab Circuit Protection

The Tektite ROPS cab is wired to provide maximum protection against accidental battery rundown and circuit overload. A relay in the cab is ignition activated and prevents the operator from accidentally leaving fan motors, lights on after turning the tractor off and leaving for the day. A circuit breaker is provided to prevent the cab electrical components from drawing more power than they should be able to from a dead short. The cab electrical components are also fused individually, and the fuse block is located in the headliner, directly above the door opening on the left side. Locate the 3" snap cap, and with a small flat screw driver you can remove the cap to examine the fuses provided. A decal on the fuse block indicates which fuse is for which electrical option.

After your ROPS Cab has been installed:

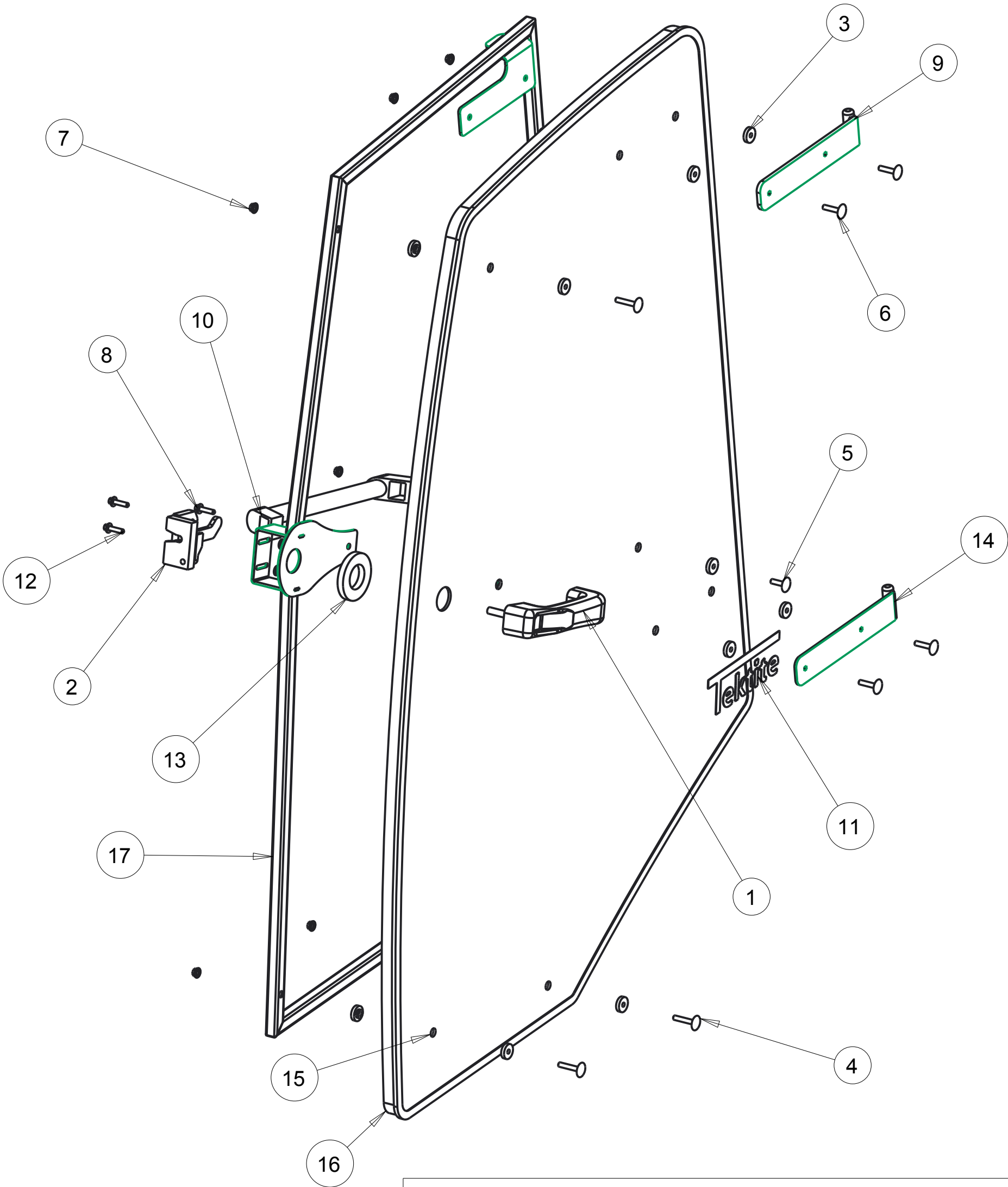
Before starting a mower equipped with a Tektite ROPS cab:

1. Clear the operator platform of all tools. Tools left in or around the ROPS and mower can cause operator interference which could lead to bodily injury and/or damage the machine.
2. Inspect the ROPS and mower to ensure all bolts are tight and re-tighten if required.
3. Ensure that all pedals, levers, and controls have adequate clearance for normal operation.
4. Ensure that all electrical components of both the ROPS and mower operate normally.
5. Ensure your door latches properly onto the striker pin. Immediately after installation, the ROPS frame may flex slightly from installation, and the door latch will need to be re-aligned for proper operation. Loosen the striker pin, striker mounting plate and door latch as necessary to get a proper alignment of the door striker.

Service Parts Breakdowns:

Following are parts breakdowns for components that may require service parts replacement during the life of the ROPS. If you require replacement parts, please contact the dealer that you purchased the ROPS from and indicate which parts you require.

Index	Service Part #	File Name	Description	Qty
1	A00-0001	DLP-HANDLE	Outside Push Button Handle	1
2	A00-0002	LEFT-LATCH	Suicide Door Left Latch	1
3	A00-0013	TEKT-0009	5MM Bushing	17
4	A00-0018	STEP-BOLT1-4X1-1-2	Step Bolt, 1/4" x 1 1/2", MB	3
5	A00-0019	STEP-BOLT1-4X1	Step Bolt, 1/4" x 1", MB	1
6	A00-0020	STEP-BOLT1-4X1-1-4	Step Bolt, 1/4" x 1 1/4", MB	4
7	A00-0021	FLANGE-NUT-1-4	Flange Nut, 1/4", YD	10
8	A00-0022	FLANGE_BOLT_M6X25	Flange Bolt, M6x25, YD	1
9	A00-0039	TEKT-ASM-001	Left Door Hinge Weldment, Upper	1
10	A00-0040	REID-RST-160-RST-163	Grab Handle	1
11	A00-0041	TEKTITE-DECAL	Tektite Cab Decal - Solid White	1
12	A00-0118	FLANGE_BOLT_1-4X1	Flange Bolt, 1/4" x 1", YD	2
13	A00-0177	TEKT-0068	Handle Washer Spacer	1
14	A00-0228	TEKT-ASM-029	Left Door Hinge Weldment, Lower	1
15	Ja3-0001	JA311-029	Left Door Glass	1
16	Ja3-0007	JA311-072	Left Door Seal	1
17	Ja3-0013	JA311-ASM-10	Left Door Frame Weldment	1



Tektite Manufacturing Inc.
24157 Hwy 3, Box 639, Winkler MB, R6W 4A8, Canada

Notice of Confidentiality

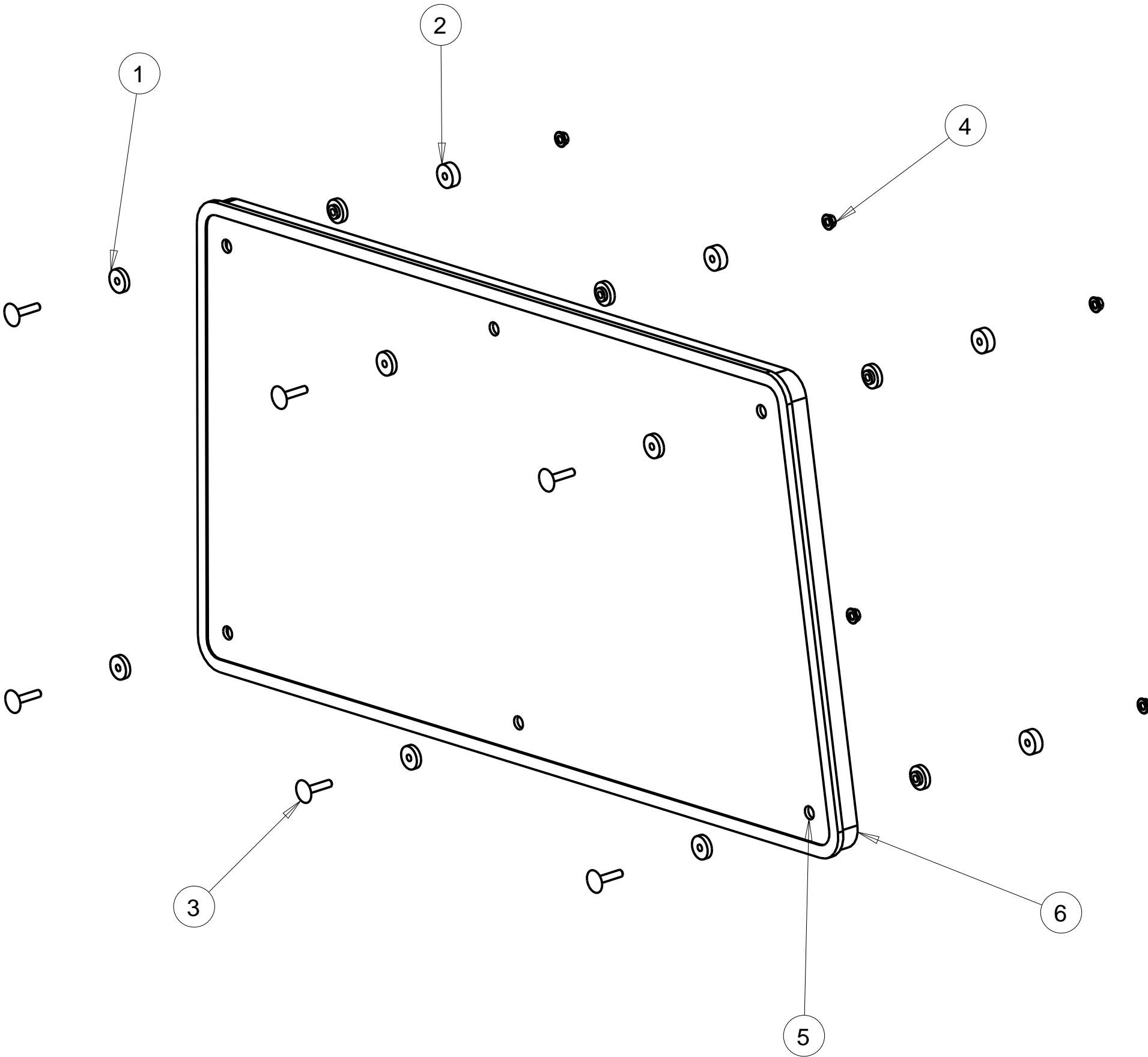
This material is property of Tektite Manufacturing Inc and is not to be used by the recipient for any purpose other than the purpose for which it was transmitted. The material remains the property of Tektite and shall be returned upon request. The material may not be reproduced or disclosed to third parties without the written consent of Tektite.

Tolerances:
Unless otherwise specified

X.X = ± 1/16"
Angular = ± 1.0°

Req'd:				
CNC:		Description: Left Door Assembly		
Drawn By: <i>Daryl Furkalo</i>		Date: 2014-04-02	Units: Imp.	
Checked By:		Date:	File Name: JA311-ASM-O6_OP	
			Size: B	

Index	Service Part #	File Name	Description	Qty
1	A00-0013	TEKT-0009	5MM Bushing	12
2	A00-0014	THICK-BUSHING	8MM Bushing	6
3	A00-0020	STEP-BOLT1-4X1-1-4	Step Bolt, 1/4" x 1 1/4", MB	6
4	A00-0021	FLANGE-NUT-1-4	Flange Nut, 1/4", YD	6
5	Ja3-0005	JA311-033	Rear Window Glass	1
6	Ja3-0011	JA311-076	Rear Window Seal	1



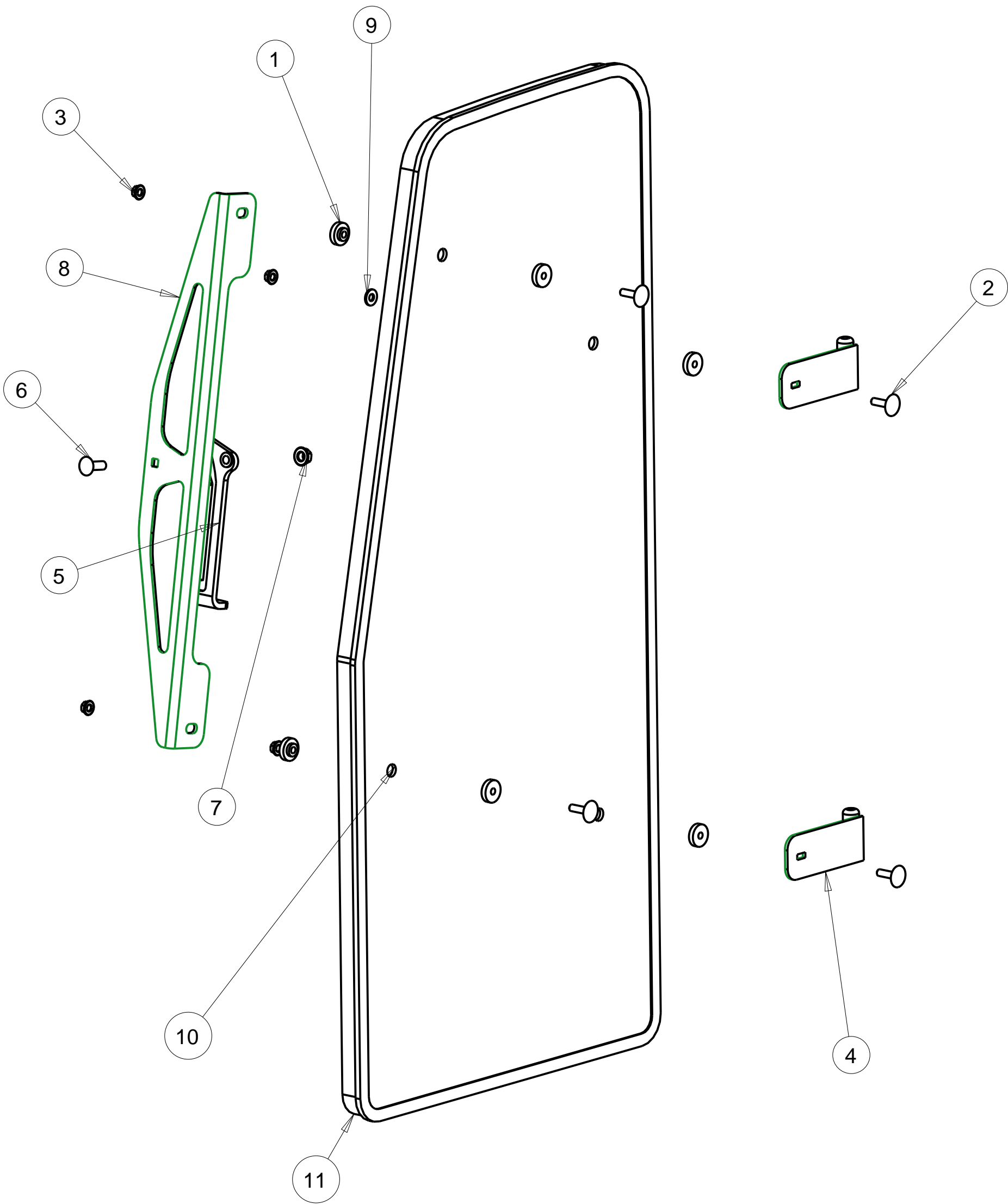
Notice of Confidentiality

This material is property of Tektite Manufacturing Inc and is not to be used by the recipient for any purpose other than the purpose for which it was transmitted. The material remains the property of Tektite and shall be returned upon request. The material may not be reproduced or disclosed to third parties without the written consent of Tektite.

Tolerances:
Unless otherwise specified
X.X = ± 1/16"
Angular = ± 1.0 °

Tektite Manufacturing Inc. 24157 Hwy 3, Box 639, Winkler MB, R6W 4A8, Canada					
Req'd:	CNC:	Description: Rear Window Assembly			
Drawn By: Daryl Furkalo	Date: 2011-08-16	Units: Imp.	File Name: JA311-ASM-16_OP		
Checked By:	Date:	Size: B			

Index	Service Part #	File Name	Description	Qty
1	A00-0013	TEKT-0009	5MM Bushing	8
2	A00-0019	STEP-BOLT1-4X1	Step Bolt, 1/4" x 1", MB	4
3	A00-0021	FLANGE-NUT-1-4	Flange Nut, 1/4", YD	4
4	A00-0044	TEKT-ASM-002	Side Window Hinge Weldment	2
5	A00-0057	TEKT-0020MIR	Side Window Latch, L60776	1
6	A00-0058	CARRIAGE_BOLT-5-16X1	Bolt, Carriage, 5/16"x 1", YD	1
7	A00-0059	FLANGE-NUT-5-16	Flange Nut, 5/16", YD	1
8	A00-0087	TEKT-0028	Side Window Slider Bracket	1
9	A00-0119	WASHER_1-4	Washer, Flat, 1/4"	2
10	Ja3-0004	JA311-032	Right Side Window Glass	1
11	Ja3-0010	JA311-075	Right Side Glass Seal	1



Notice of Confidentiality

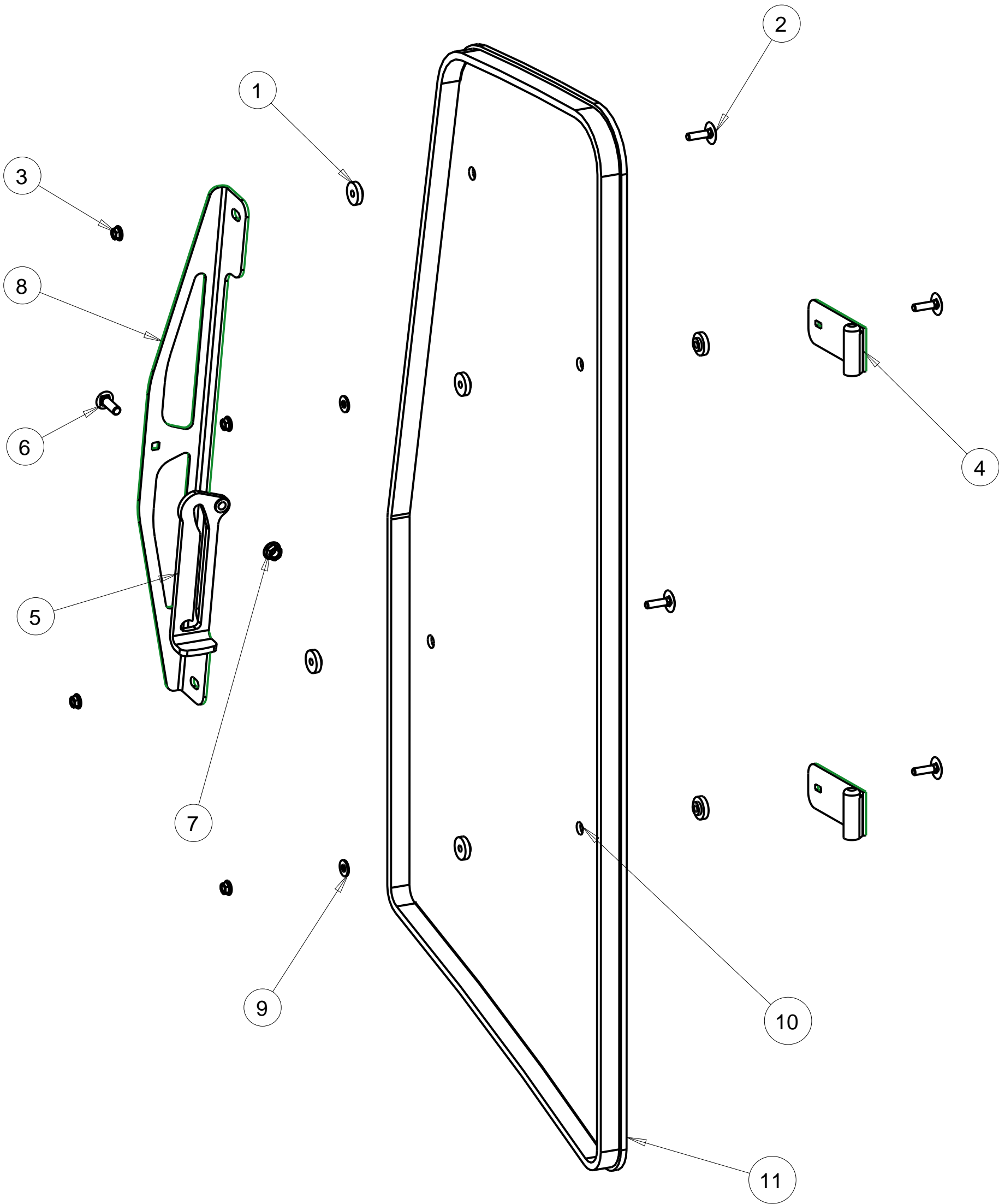
This material is property of Tektite Manufacturing Inc and is not to be used by the recipient for any purpose other than the purpose for which it was transmitted. The material remains the property of Tektite and shall be returned upon request. The material may not be reproduced or disclosed to third parties without the written consent of Tektite.

Tolerances:
Unless otherwise specified

X.X = ± 1/16"
Angular = ± 1.0 °

Tektite Manufacturing Inc. 24157 Hwy 3, Box 639, Winkler MB, R6W 4A8, Canada				
Req'd:	CNC:	Description: Right Side Window Assembly		
Drawn By: Daryl Furkalo	Date: 2011-08-16	Units: Imp.	File Name: JA311-ASM-15_OP	
Checked By:	Date:	Size: B		

Index	Service Part #	File Name	Description	Qty
1	A00-0013	TEKT-0009	5MM Bushing	8
2	A00-0019	STEP-BOLT1-4X1	Step Bolt, 1/4" x 1", MB	4
3	A00-0021	FLANGE-NUT-1-4	Flange Nut, 1/4", YD	4
4	A00-0046	TEKT-ASM-002R	Side Window Hinge Right	2
5	A00-0056	TEKT-0020	Side Window Latch, L60775	1
6	A00-0058	CARRIAGE_BOLT-5-16X1	Bolt, Carriage, 5/16"x 1", YD	1
7	A00-0059	FLANGE-NUT-5-16	Flange Nut, 5/16", YD	1
8	A00-0087	TEKT-0028	Side Window Slider Bracket	1
9	A00-0119	WASHER_1-4	Washer, Flat, 1/4"	2
10	Ja3-0002	JA311-030	Left Side Window Glass	1
11	Ja3-0008	JA311-073R	Left Side Glass Seal	1



Notice of Confidentiality

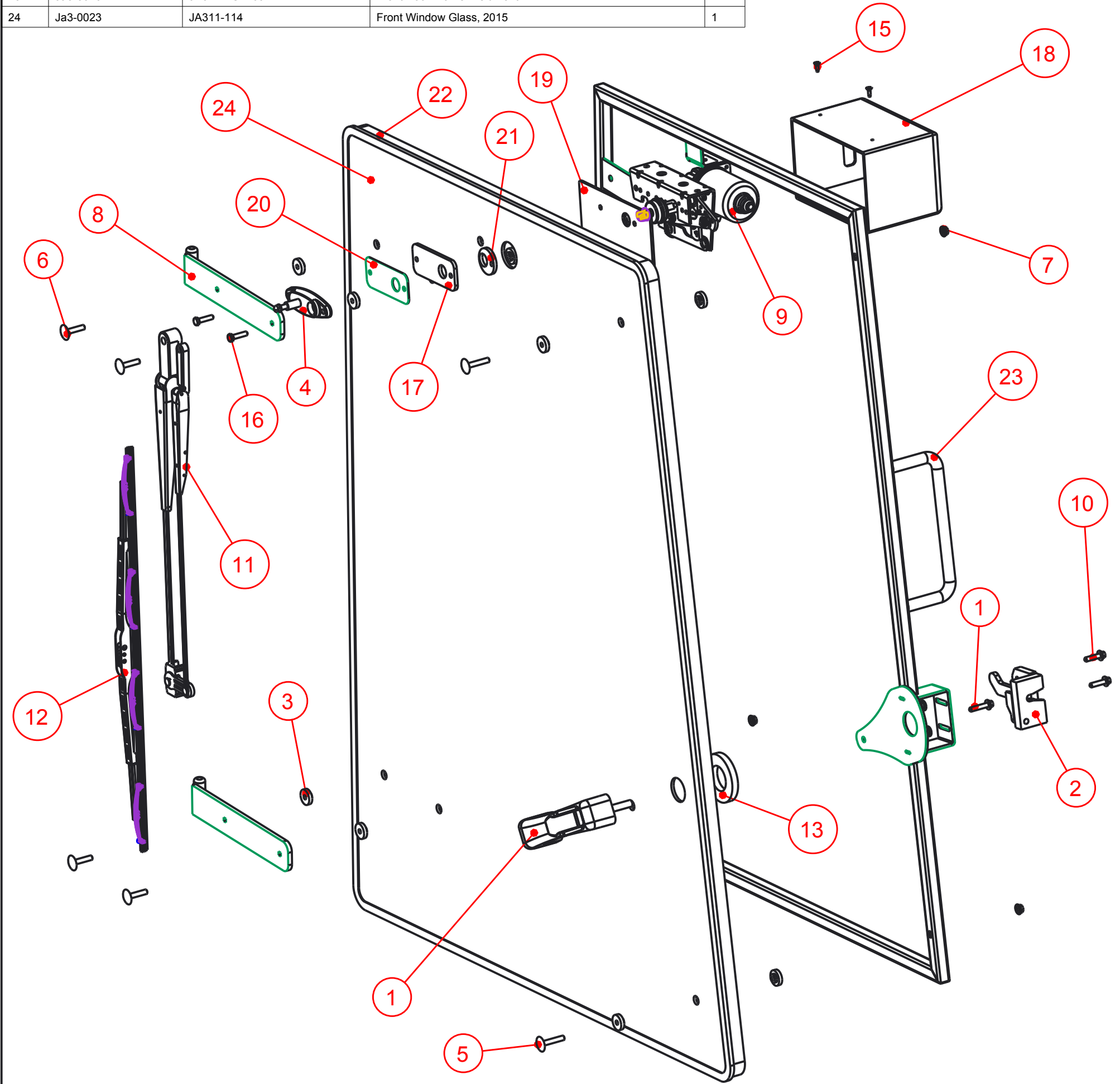
This material is property of Tektite Manufacturing Inc and is not to be used by the recipient for any purpose other than the purpose for which it was transmitted. The material remains the property of Tektite and shall be returned upon request. The material may not be reproduced or disclosed to third parties without the written consent of Tektite.

Tolerances:
Unless otherwise specified

X.X = ± 1/16"
Angular = ± 1.0 °

Tektite Manufacturing Inc. 24157 Hwy 3, Box 639, Winkler MB, R6W 4A8, Canada				
Req'd:	CNC:	Description: Left Side Window Assembly		
Drawn By: Daryl Furkalo	Date: 2011-08-16	Units: Imp.	File Name: JA311-ASM-12_OP	
Checked By:	Date:	Size: B		

Index	Service Part #	File Name	Description	Qty
1	A00-0001	DLP-HANDLE	Outside Push Button Handle	1
2	A00-0003	RIGHT-LATCH	Suicide Door Right Latch	1
3	A00-0013	TEKT-0009	5MM Bushing	13
4	A00-0017	305-1002	Panto Mount Plate	1
5	A00-0018	STEP-BOLT1-4X1-1-2	Step Bolt, 1/4" x 1 1/2", MB	2
6	A00-0020	STEP-BOLT1-4X1-1-4	Step Bolt, 1/4" x 1 1/4", MB	4
7	A00-0021	FLANGE-NUT-1-4	Flange Nut, 1/4", YD	8
8	A00-0042	TEKT-ASM-001R	Right Cab Door Hinge Weldment, Upper	2
9	A00-0075	WWJ-MOTOR-ASM	Front Wiper Motor, WWJ	1
10	A00-0118	FLANGE_BOLT_1-4X1	Flange Bolt, 1/4" x 1", YD	2
11	A00-0140	TEKT-ASM-061	20" Panto Arm, WWJ	1
12	A00-0150	BLADE_20	Wiper Blade, 20"	1
13	A00-0177	TEKT-0068	Handle Washer Spacer	1
14	A00-0295	FLANGE_BOLT_M6X30	Flange Bolt, M6x30, YD	1
15	A00-0311	SCREW-NO8X1-2	Screw, #8 x 1/2"	2
16	A00-0342	HEX-BOLT_1-4X1_UNF	Hex Bolt, 1/4" x 1", UNF	2
17	A00-0343	TEKT-0167	WWJ Motor Bushing, Exterior	1
18	A00-0344	TEKT-0171	Formed Plastic, WWJ Motor Cover	1
19	A00-0345	TEKT-0170	Flat Plastic, WWJ Motor Cover, Front	1
20	A00-0346	TEKT-0169	WWJ Motor Steel Spacer	1
21	A00-0347	TEKT-0168	WWJ Motor Bushing, In-Glass	1
22	Ja3-0012	JA311-077	Front Door Seal	1
23	Ja3-0015	JA311-ASM-09	Front Door Frame Weldment	1
24	Ja3-0023	JA311-114	Front Window Glass, 2015	1



Tektite Manufacturing Inc.
24157 Hwy 3, Box 639, Winkler MB, R6W 4A8, Canada

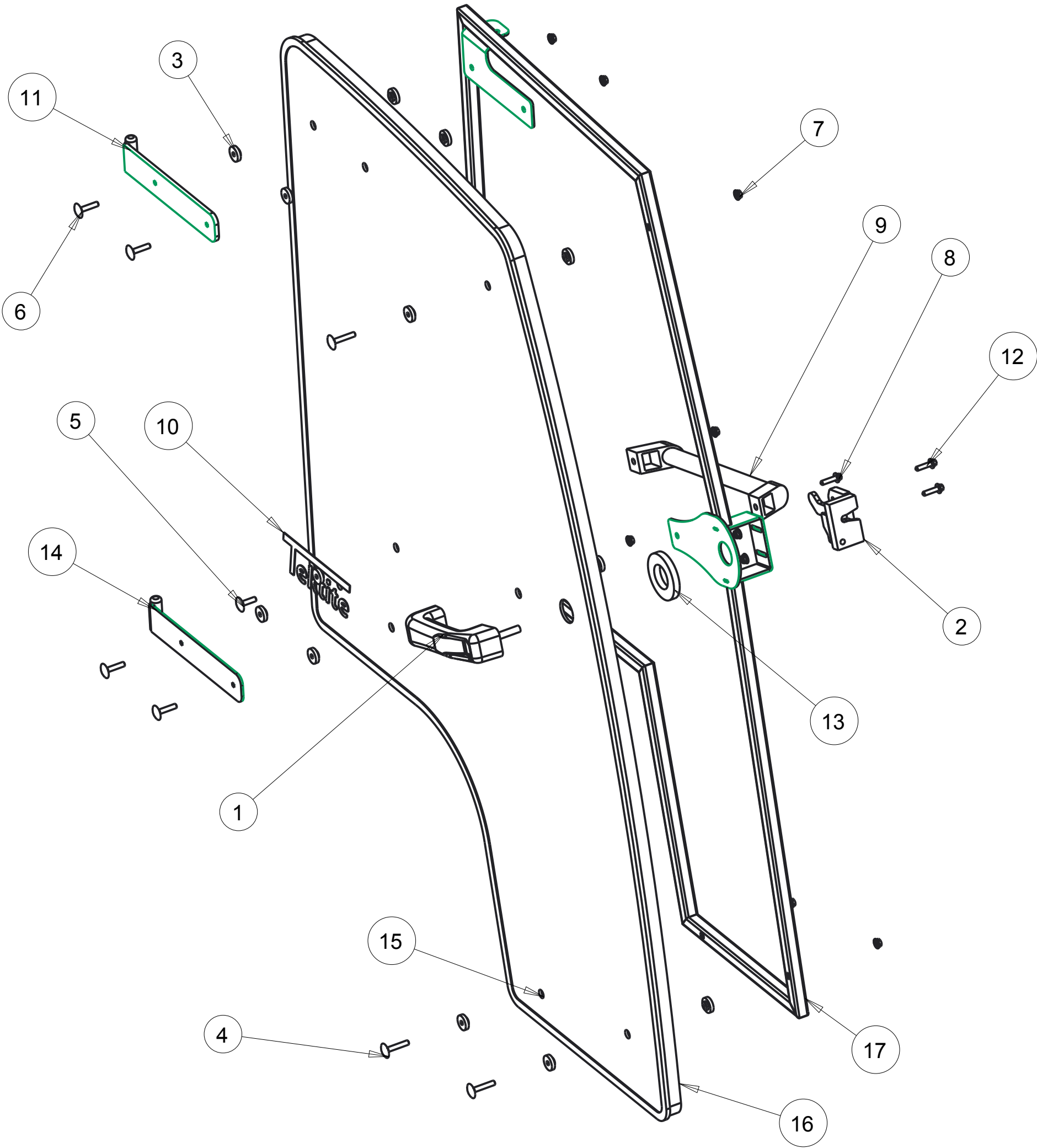
Notice of Confidentiality

This material is property of Tektite Manufacturing Inc and is not to be used by the recipient for any purpose other than the purpose for which it was transmitted. The material remains the property of Tektite and shall be returned upon request. The material may not be reproduced or disclosed to third parties without the written consent of Tektite.

Tolerances:
Unless otherwise specified
X.X = ± 1/16"
Angular = ± 1.0°

Req'd:				
CNC:		Description: Front Door Assembly		
Drawn By: Daryl Furkalo		Units: Imp.	File Name: JA311-ASM-28_OP	
Checked By:		Date:	Size: B	

Index	Service Part #	File Name	Description	Qty
1	A00-0001	DLP-HANDLE	Outside Push Button Handle	1
2	A00-0003	RIGHT-LATCH	Suicide Door Right Latch	1
3	A00-0013	TEKT-0009	5MM Bushing	17
4	A00-0018	STEP-BOLT1-4X1-1-2	Step Bolt, 1/4" x 1 1/2", MB	3
5	A00-0019	STEP-BOLT1-4X1	Step Bolt, 1/4" x 1", MB	1
6	A00-0020	STEP-BOLT1-4X1-1-4	Step Bolt, 1/4" x 1 1/4", MB	4
7	A00-0021	FLANGE-NUT-1-4	Flange Nut, 1/4", YD	10
8	A00-0022	FLANGE_BOLT_M6X25	Flange Bolt, M6x25, YD	1
9	A00-0040	REID-RST-160-RST-163	Grab Handle	1
10	A00-0041	TEKTITE-DECAL	Tektite Cab Decal - Solid White	1
11	A00-0042	TEKT-ASM-001R	Right Cab Door Hinge Weldment, Upper	1
12	A00-0118	FLANGE_BOLT_1-4X1	Flange Bolt, 1/4" x 1", YD	2
13	A00-0177	TEKT-0068	Handle Washer Spacer	1
14	A00-0229	TEKT-ASM-029R	Right Door Hinge Weldment, Lower	1
15	Ja3-0003	JA311-031	Right Door Glass	1
16	Ja3-0009	JA311-074	Right Door Seal	1
17	Ja3-0014	JA311-ASM-11	Right Door Frame Weldment	1



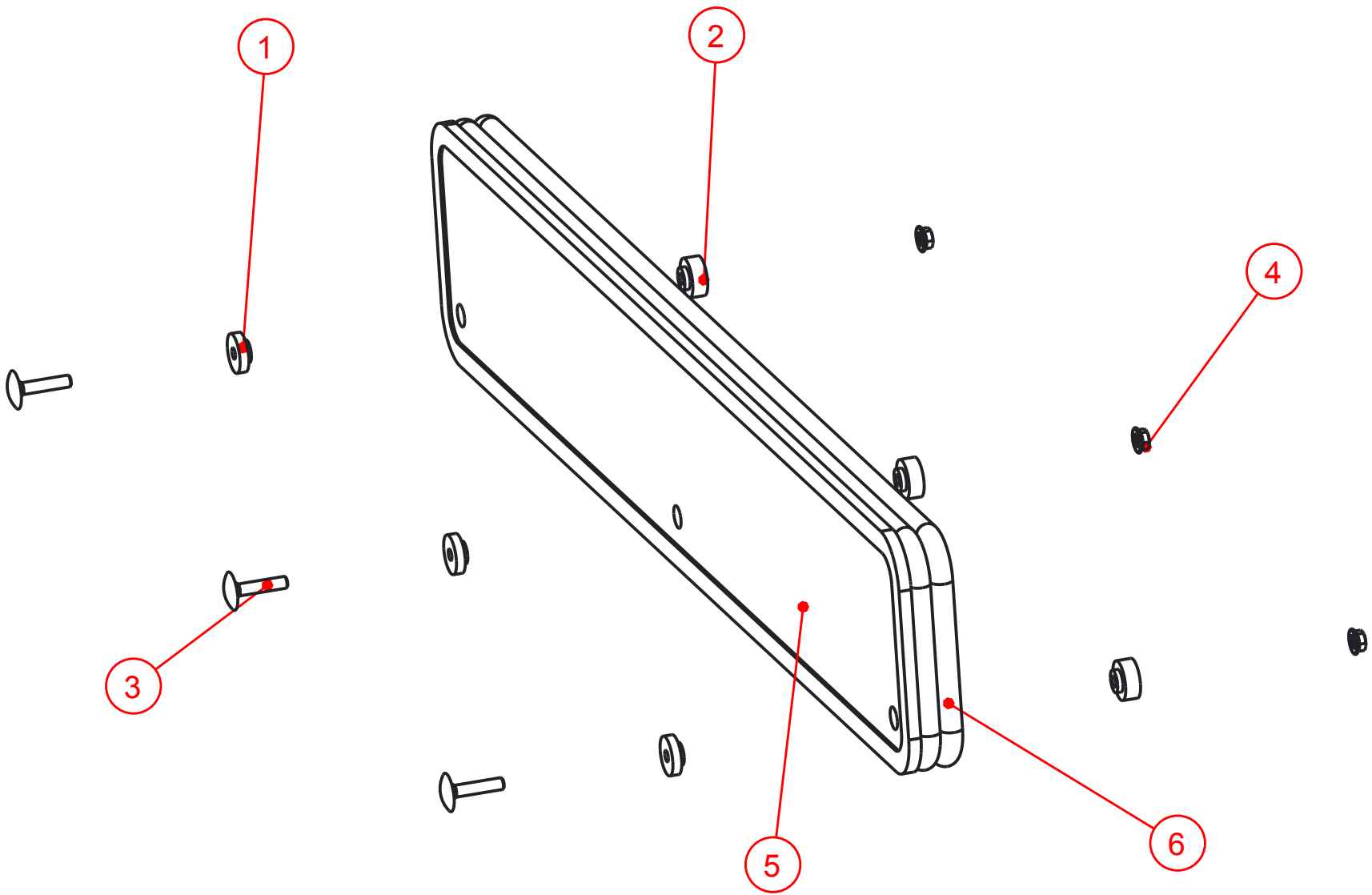
Notice of Confidentiality

This material is property of Tektite Manufacturing Inc and is not to be used by the recipient for any purpose other than the purpose for which it was transmitted. The material remains the property of Tektite and shall be returned upon request. The material may not be reproduced or disclosed to third parties without the written consent of Tektite.

Tolerances:
Unless otherwise specified
X.X = ± 1/16"
Angular = ± 1.0°

Tektite Manufacturing Inc. 24157 Hwy 3, Box 639, Winkler MB, R6W 4A8, Canada				
Req'd:	CNC:	Description: Right Door Weldment		
Drawn By: Daryl Furkalo	Date: 2014-04-02	Units: Imp.	File Name: JA311-ASM-07_OP	
Checked By:	Date:	Size: B		

Index	Service Part #	File Name	Description	Qty
1	A00-0013	TEKT-0009	5MM Bushing	3
2	A00-0014	TEKT-0092	Thick Bushing	3
3	A00-0020	STEP-BOLT1-4X1-1-4	Step Bolt, 1/4" x 1 1/4", MB	3
4	A00-0021	FLANGE-NUT-1-4	Flange Nut, 1/4", YD	3
5	Ja3-0017	JA311-099	Lower Rear Window	1
6	Ja3-0028	JA311-131_	Lower Rear Window Seal	1



Notice of Confidentiality

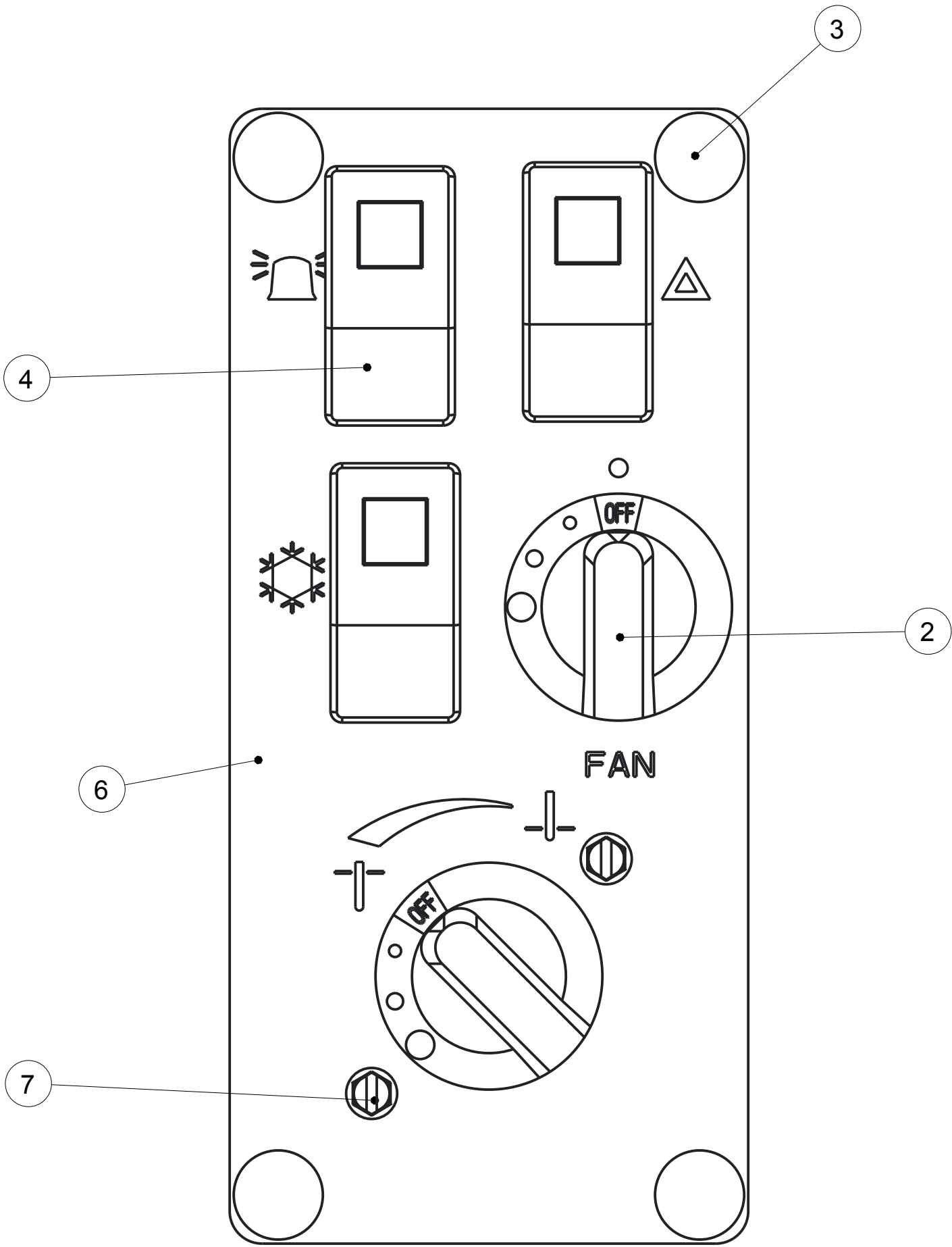
This material is property of Tektite Manufacturing Inc and is not to be used by the recipient for any purpose other than the purpose for which it was transmitted. The material remains the property of Tektite and shall be returned upon request. The material may not be reproduced or disclosed to third parties without the written consent of Tektite.

Tolerances:
Unless otherwise specified

X.X = $\pm 1/16"$
Angular = $\pm 1.0^\circ$

Tektite Manufacturing Inc. 24157 Hwy 3, Box 639, Winkler MB, R6W 4A8, Canada					
Req'd:	CNC:	Description:			
1 req		Lower Rear Window Assembly			
Drawn By:	Date:	Units:	File Name:		
Daryl Furkalo	2015-04-15	Imp.	JA311-ASM-30_OP		
Checked By:	Date:	Size:			
		B			

Index	Service Part #	File Name	Description	Qty
1	A00-0007	FAN-SWITCH	4-Position Fan Switch	1
2	A00-0054	TEKT-0018	Fan Speed Control Knob	2
3	A00-0055	TEKT-0019	Fir Tree Fastener	4
4	A00-0065	TEKT-ASM-005	On-Off Switch w/Lens	3
5	A00-0252	TEKT-0117	Water Valve Directly on Switch	1
6	A00-0253	TEKT-0119	Right Switchplate Decal, 2014 Update	1
7	A00-0282	SCREW-3-16X3-4	Screw, Self-Tap, 3/16" x 3/4"	2
8	A00-0283	TEKT-0118	Right Switchplate, 2014 Redesign	1



SCALE 1.000

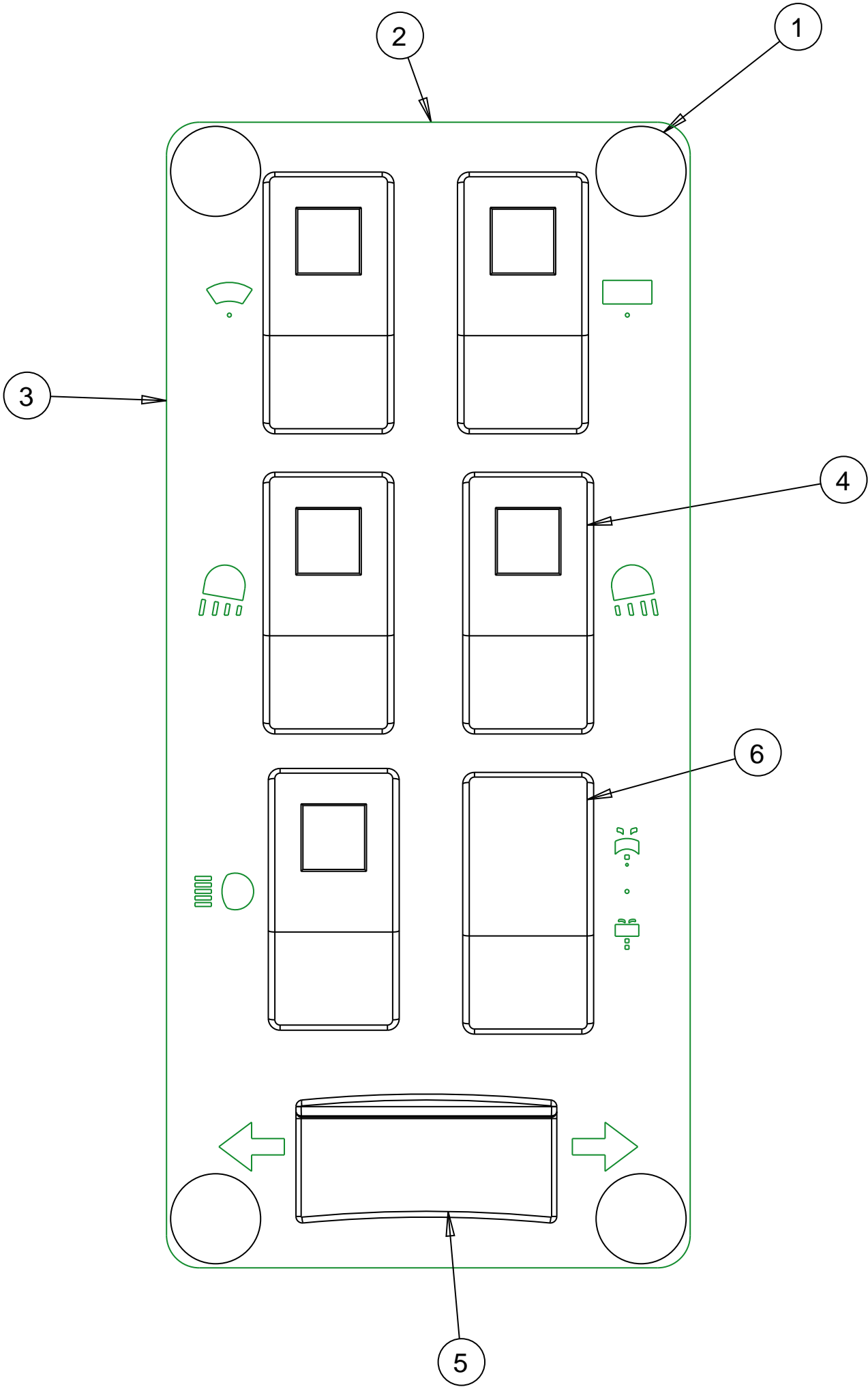
Notice of Confidentiality

This material is property of Tektite Manufacturing Inc and is not to be used by the recipient for any purpose other than the purpose for which it was transmitted. The material remains the property of Tektite and shall be returned upon request. The material may not be reproduced or disclosed to third parties without the written consent of Tektite.

Tolerances:
Unless otherwise specified
X.X = ± 1/16"
Angular = ± 1.0°

Tektite Manufacturing Inc. 24157 Hwy 3, Box 639, Winkler MB, R6W 4A8, Canada					
Req'd:	CNC:	Description: New Valve Design Switch Plate, 2014			
Drawn By: Daryl Furkalo	Date: 2014-02-05	Units: Imp.	File Name: TEKT-ASM-O3O		
Checked By:	Date:	Size: B			

Index	Service Part #	File Name	Description	Qty
1	A00-0055	TEKT-0019	Fir Tree Fastener	4
2	A00-0063	LEFT-CAB-SWITCHPLATE	Left Switchplate	1
3	A00-0064	LEFT-CAB-SWITCHPLATE-DECAL	Left Switchplate Decal	1
4	A00-0065	TEKT-ASM-005	On-Off Switch w/Lens	5
5	A00-0066	TEKT-ASM-006	On-Off-On Rocker No Lens	1
6	A00-0067	TEKT-ASM-007	Mom-Off-Mom Rocker Switch	1



SCALE 1.000

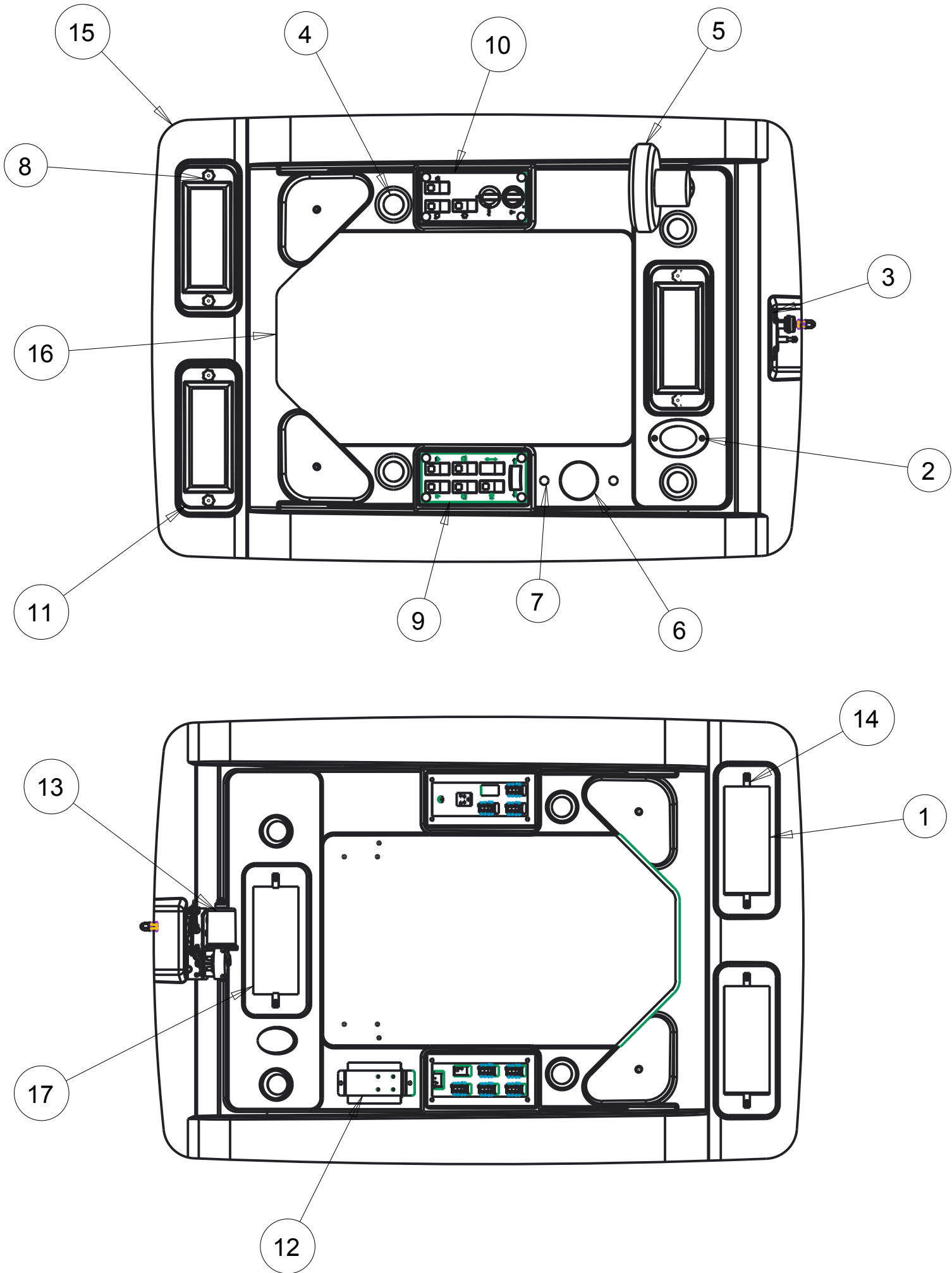
Notice of Confidentiality

This material is property of Tektite Manufacturing Inc and is not to be used by the recipient for any purpose other than the purpose for which it was transmitted. The material remains the property of Tektite and shall be returned upon request. The material may not be reproduced or disclosed to third parties without the written consent of Tektite.

Tolerances:
Unless otherwise specified
X.X = ± 1/16"
Angular = ± 1.0 °

Tektite Manufacturing Inc. 24157 Hwy 3, Box 639, Winkler MB, R6W 4A8, Canada				
Req'd:	CNC:	Description: Operator Manual Switch Plate Left		
Drawn By: Daryl Furkalo	Date: 2009-03-09	Units: Imp.	File Name: LEFT-SWITCHPLATE-ASM	
Checked By:	Date:	Size: B		

Index	Service Part #	File Name	Description	Qty
1	A00-0006	TEKT-0074	Cabin Air Filter	2
2	A00-0016	TEKT-0075	Domelight LED	1
3	A00-0017	305-1002	Panto Mount Plate	1
4	A00-0025	BALL-LOUVER	2 1/2" Ball Louver	4
5	A00-0026	OSCILLATING-FAN	Oscillating Fan	1
6	A00-0038	TEKT-0076	3" Plug Button	1
7	A00-0055	TEKT-0019	Fir Tree Fastener	2
8	A00-0070	REID-KBP-262-KBP-265	Knob, Knurled, 1/4"	6
9	A00-0071	LEFT-SWITCHPLATE-ASM	Left Switchplate Assembly	1
10	A00-0072	RIGHT-SWITCH-PLATE-ASM	Right Switchplate Assembly	1
11	A00-0073	FILTER-COVER	Filter Cover	3
12	A00-0074	TEKT-ASM-004	Fuse Block Assembly	1
13	A00-0075	WWJ-MOTOR-ASM	Front Wiper Motor, WWJ	1
14	A00-0076	TEKT-0026	1/4" Panel Nut	6
15	A00-0081	KUF2880-HEADLINER-REV1	Headliner	1
16	A00-0082	KUF2880-049	Headliner Upholstery	1
17	A00-0083	KUF2880-060	Front Filter Upholstery	1



Notice of Confidentiality

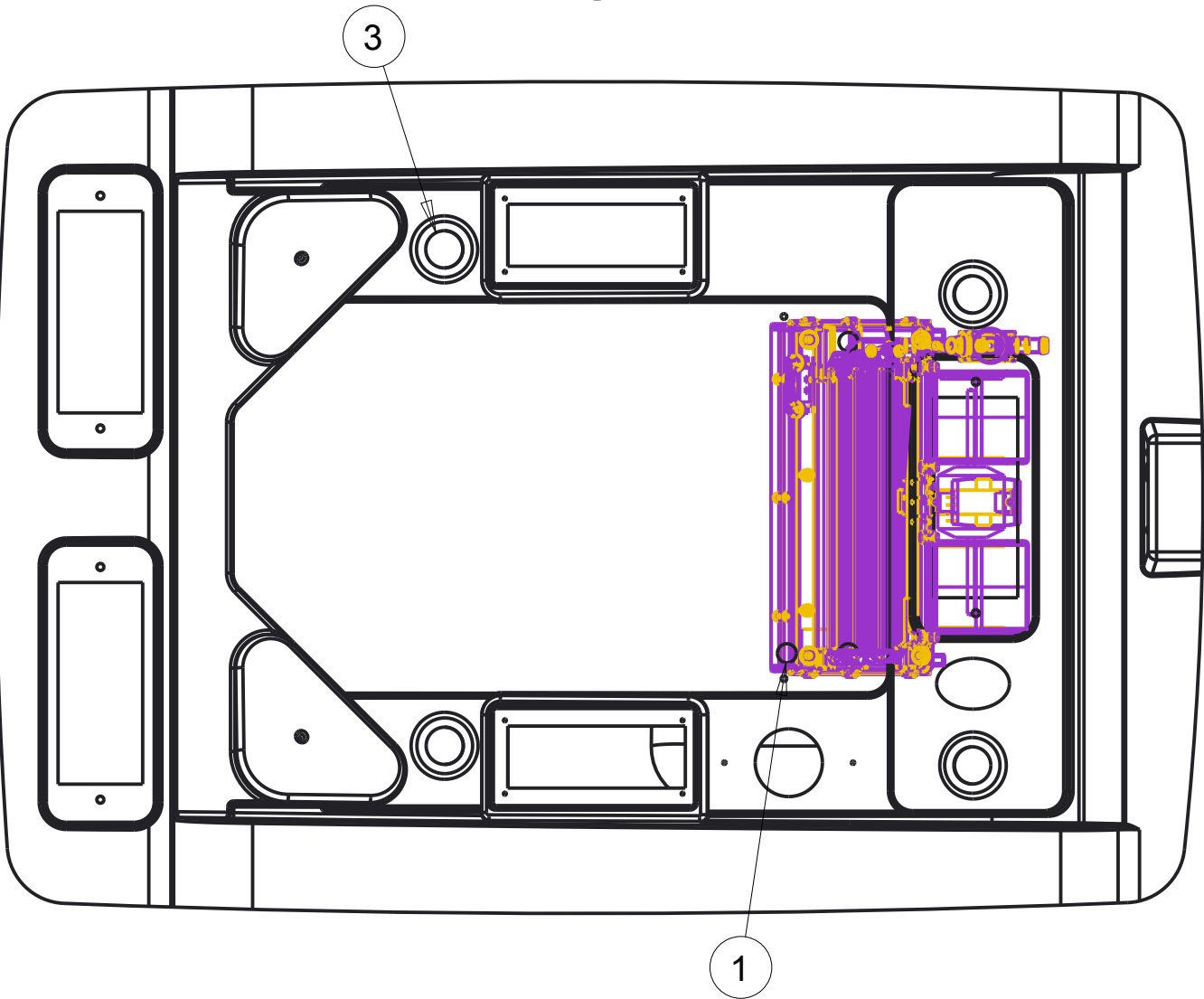
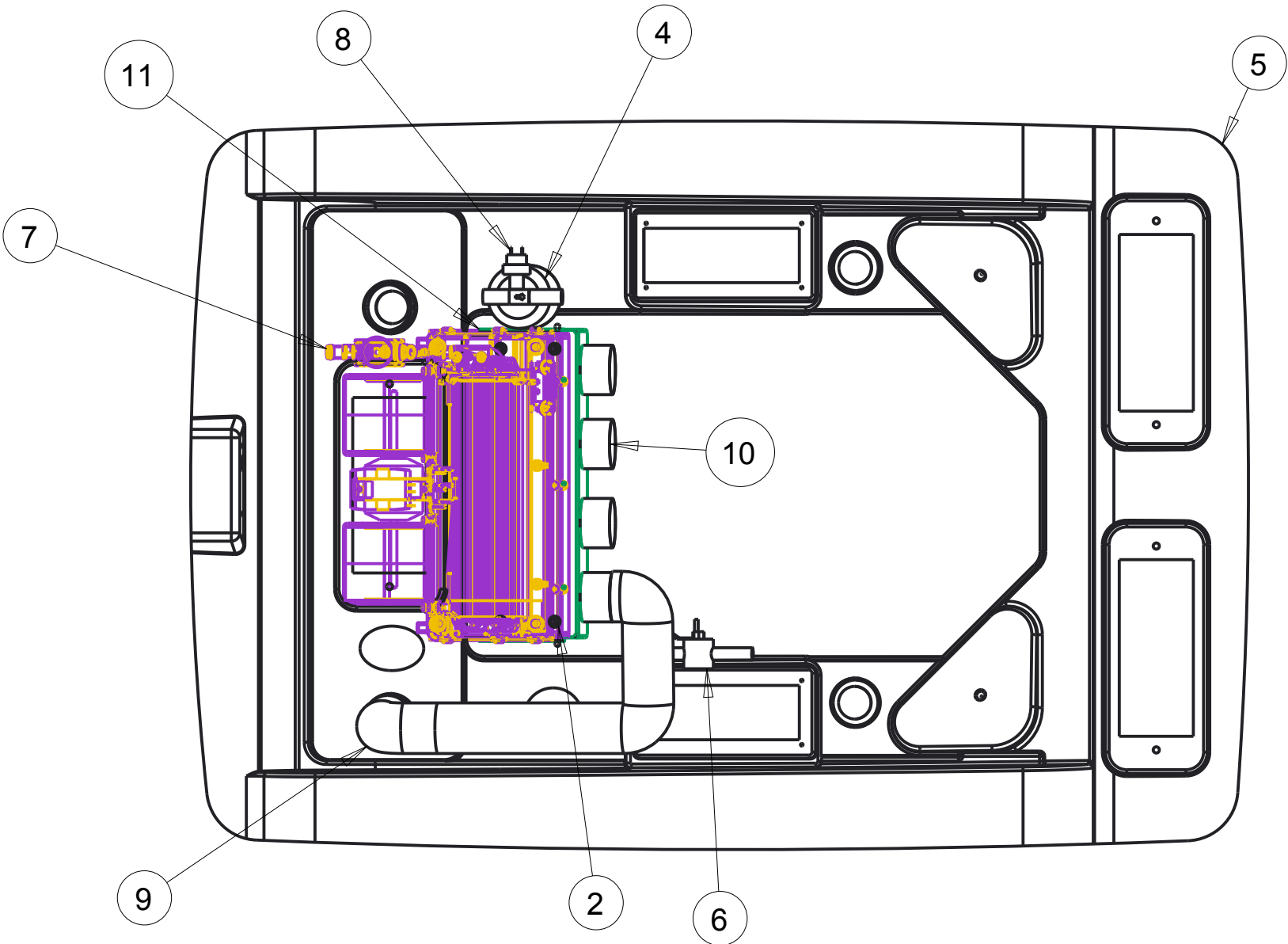
This material is property of Tektite Manufacturing Inc and is not to be used by the recipient for any purpose other than the purpose for which it was transmitted. The material remains the property of Tektite and shall be returned upon request. The material may not be reproduced or disclosed to third parties without the written consent of Tektite.

Tolerances:
Unless otherwise specified
X.X = ± 1/16"
Angular = ± 1.0°

Tektite Manufacturing Inc.
24157 Hwy 3, Box 639, Winkler MB, R6W 4A8, Canada

Req'd:	CNC:	Description: Headliner Assembly Breakdown		
Drawn By: Daryl Furkalo	Date: 2013-02-01	Units: Imp.	File Name: KUF2880-HEADLINER-ASM	
Checked By:	Date:	Size: B		

Index	Service Part #	File Name	Description	Qty
1	A00-0019	STEP-BOLT1-4X1	Step Bolt, 1/4" x 1", MB	4
2	A00-0021	FLANGE-NUT-1-4	Flange Nut, 1/4", YD	4
3	A00-0025	BALL-LOUVER	2 1/2" Ball Louver	4
4	A00-0028	TEKT-0088	Red Dot Drier	1
5	A00-0081	KUF2880-HEADLINER-REV1	Headliner	1
6	A00-0097	TEKT-0082	Water Valve	1
7	A00-0105	R-2300-2_090902	Heater A/C Blower Unit, 2300	1
8	A00-0171	TEKT-0089	Binary Switch	1
9	A00-0173	TEKT-0090	Louver Hose	1
10	A00-0204	TEKT-ASM-011	Louver Hose Mount Plate, 2300	1
11	A00-0205	TEKT-0008_REV1	Red Dot 2300 Mount Bracket	1



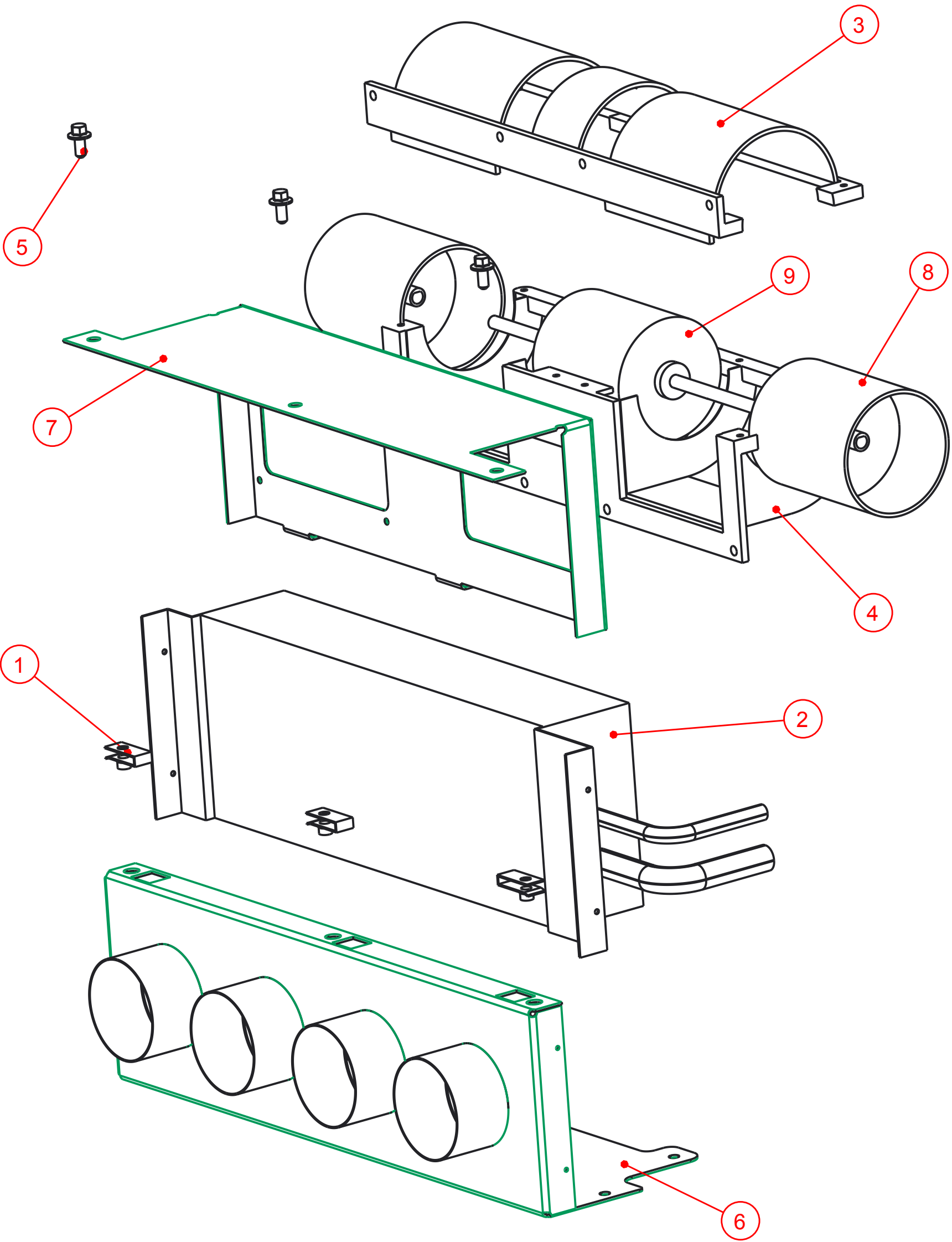
Notice of Confidentiality

This material is property of Tektite Manufacturing Inc and is not to be used by the recipient for any purpose other than the purpose for which it was transmitted. The material remains the property of Tektite and shall be returned upon request. The material may not be reproduced or disclosed to third parties without the written consent of Tektite.

Tolerances:
Unless otherwise specified
X.X = ± 1/16"
Angular = ± 1.0°

Tektite Manufacturing Inc. 24157 Hwy 3, Box 639, Winkler MB, R6W 4A8, Canada					
Req'd:	CNC:	Description: A/C Compatible Additional Parts			
Drawn By: Daryl Furkalo	Date: 2013-02-13	Units: Imp.	File Name: TEKT-ASM-O2O_AC-ASM		
Checked By:	Date:	Size: B			

Index	Service Part #	File Name	Description	Qty
1	A00-0076	TEKT-0026	1/4" Panel Nut	3
2	A00-0089	TEKT-0059	Heater Core	1
3	A00-0090	TEKT-0065	Upper Blower Housing	1
4	A00-0091	TEKT-0066	Blower Housing Lower	1
5	A00-0100	FLANGE_BOLT_1-4X1-2	Flange Bolt, 1/4" x 1/2", YD	3
6	A00-0157	TEKT-ASM-015	Bottom Heater Shroud Weldment	1
7	A00-0158	TEKT-ASM-014	Top Heater Shroud Weldment	1
8	A00-0159	TEKT-0067	Rotary Squirrel Cage	2
9	A00-0162	TEKT-0081	Fan Motor	1



Notice of Confidentiality

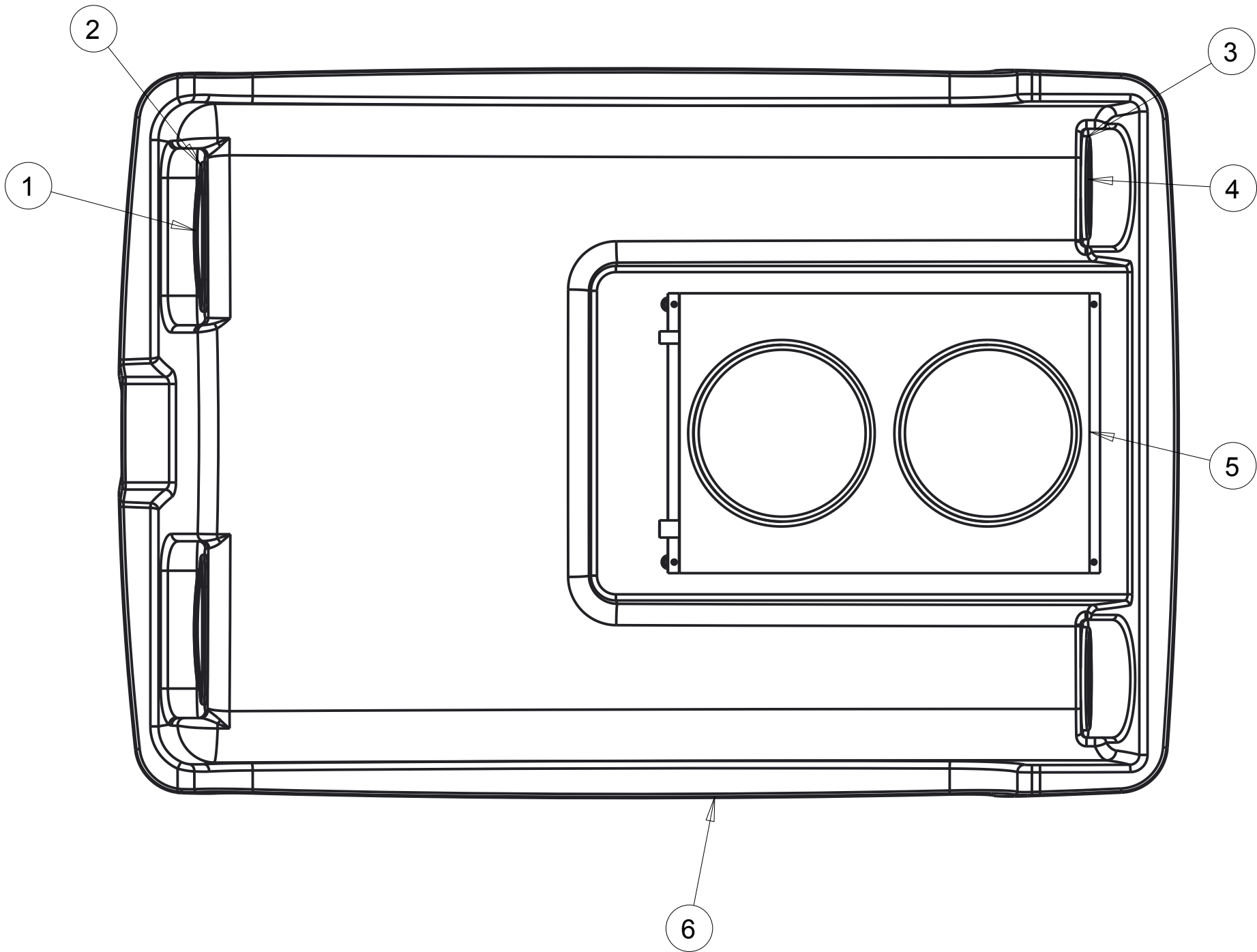
This material is property of Tektite Manufacturing Inc and is not to be used by the recipient for any purpose other than the purpose for which it was transmitted. The material remains the property of Tektite and shall be returned upon request. The material may not be reproduced or disclosed to third parties without the written consent of Tektite.

Tolerances:
Unless otherwise specified

X.X = ± 1/16"
Angular = ± 1.0°

Tektite Manufacturing Inc. 24157 Hwy 3, Box 639, Winkler MB, R6W 4A8, Canada				
Req'd:	CNC:	Description: Tektite In-House Heater Assembly		
Drawn By: Daryl Furkalo	Date: 2014-09-17	Units: Imp.	File Name: TEKT-ASM-016_OP	
Checked By:	Date:	Size: B		

Index	Service Part #	File Name	Description	Qty
1	A00-0008	TEKT-0077	Front Turn Signal Light LED, Amber	2
2	A00-0009	TEKT-0079	Oval LED Light Grommet	2
3	A00-0010	TEKT-0078	Round Grommet, LED Light	2
4	A00-0011	TEKT-0080	Round Turn Light	2
5	A00-0078	RED-DOT-CONDENSOR	Red Dot Condensor 77R1602	1
6	Ja3-0016	KUF2880-ROOF	Roof	1



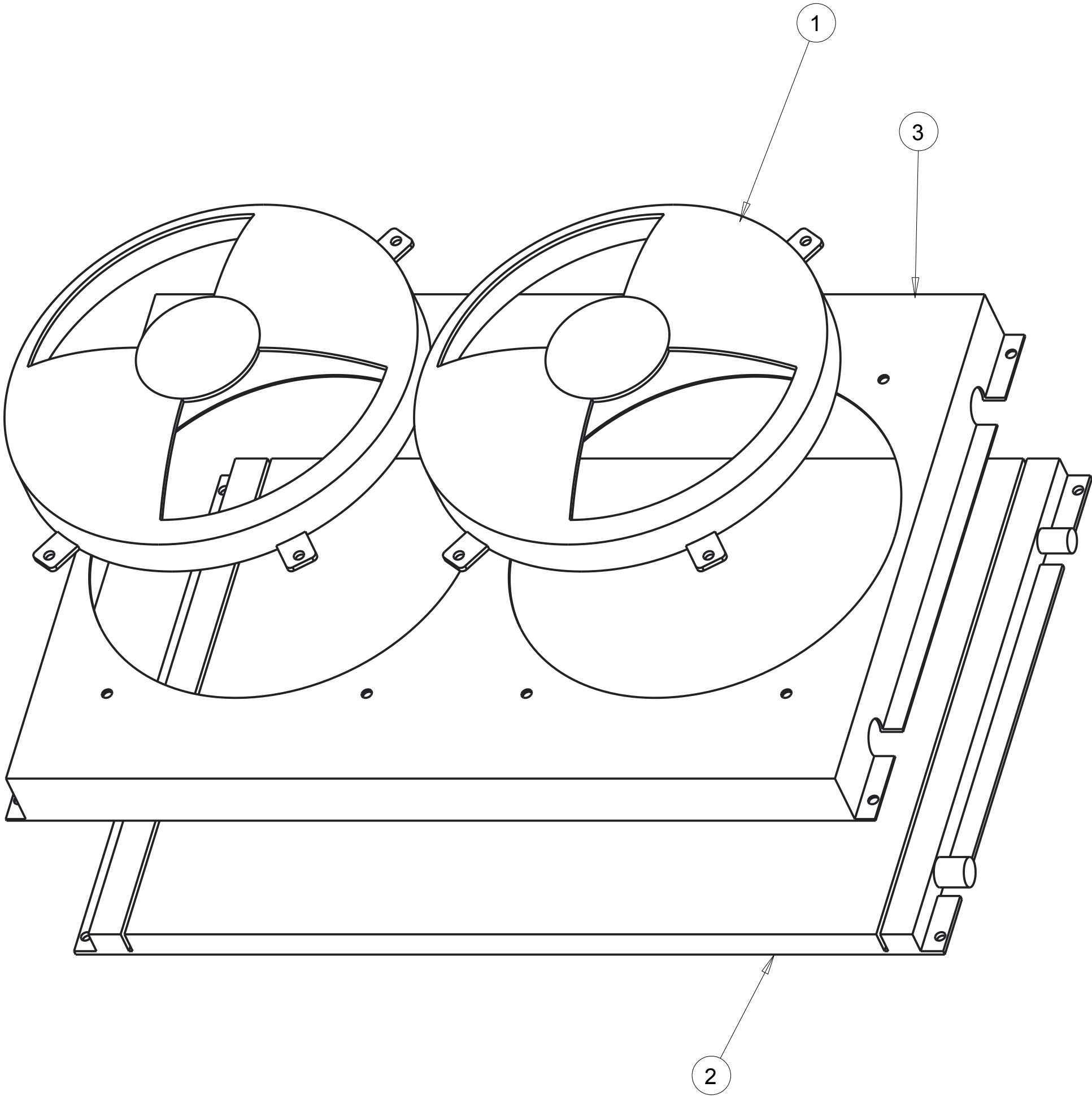
Notice of Confidentiality

This material is property of Tektite Manufacturing Inc and is not to be used by the recipient for any purpose other than the purpose for which it was transmitted. The material remains the property of Tektite and shall be returned upon request. The material may not be reproduced or disclosed to third parties without the written consent of Tektite.

Tolerances:
Unless otherwise specified
X.X = ± 1/16"
Angular = ± 1.0°

Tektite Manufacturing Inc. 24157 Hwy 3, Box 639, Winkler MB, R6W 4A8, Canada				
Req'd:	CNC:	Description: Roof Assembly		
Drawn By: Daryl Furkalo	Date: 2013-02-01	Units: Imp.	File Name: KUF2880-ROOF-ASM	
Checked By:	Date:	Size: B		

Index	Service Part #	File Name	Description	Qty
1	A00-0166	TEKT-0103	Condensor Fan	2
2	A00-0220	TEKT-0101	Base Condenser Coil	1
3	A00-0221	TEKT-0102	Condensor Assembly Steel Shroud	1



Notice of Confidentiality

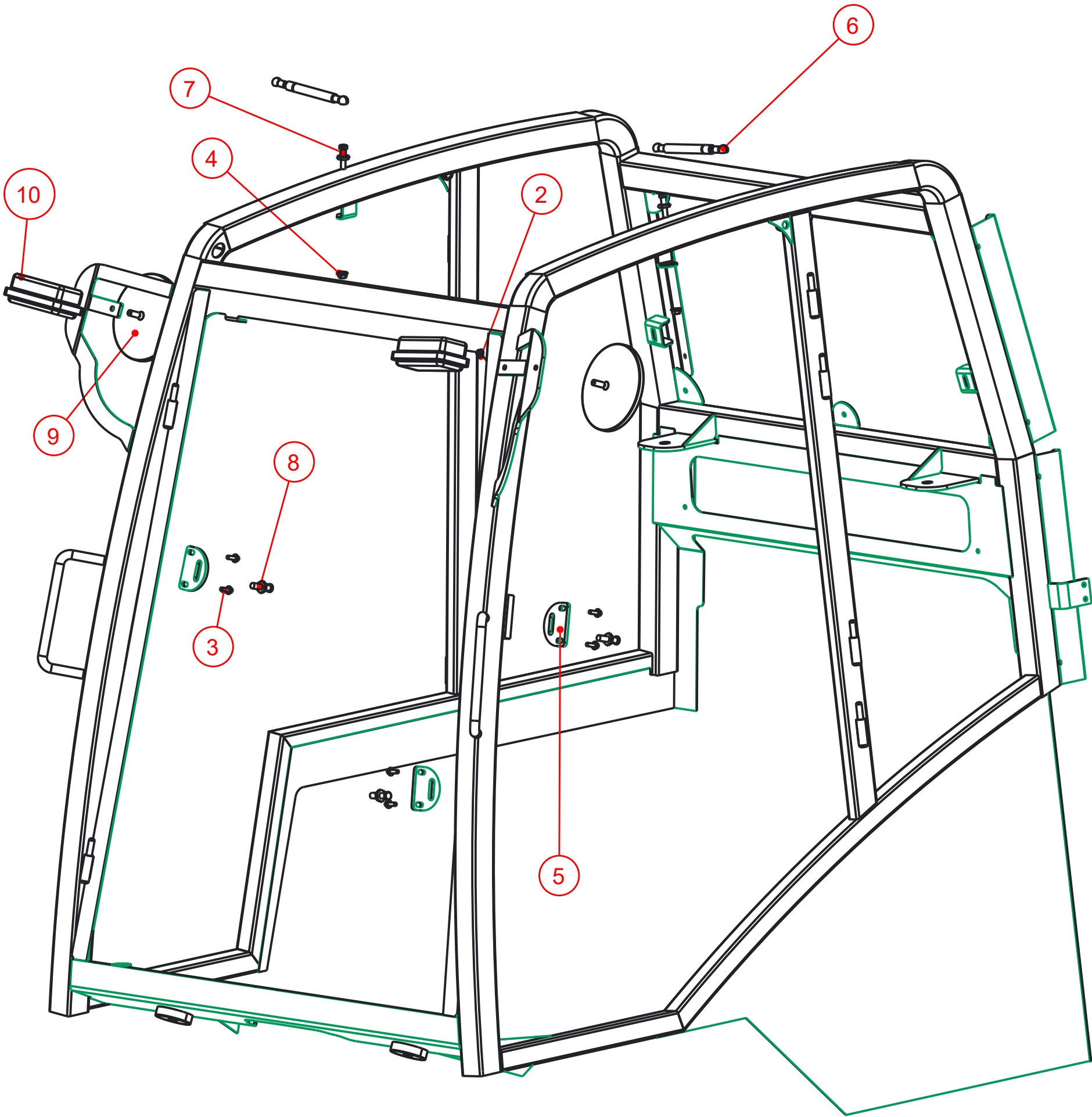
This material is property of Tektite Manufacturing Inc and is not to be used by the recipient for any purpose other than the purpose for which it was transmitted. The material remains the property of Tektite and shall be returned upon request. The material may not be reproduced or disclosed to third parties without the written consent of Tektite.

Tolerances:
Unless otherwise specified

X.X = ± 1/16"
Angular = ± 1.0°

Tektite Manufacturing Inc. 24157 Hwy 3, Box 639, Winkler MB, R6W 4A8, Canada					
Req'd:	CNC:	Description: Condensor Assembly Breakdown			
Drawn By: Daryl Furkalo	Date: 2013-07-04	Units: Imp.	File Name: TEKT-ASM-O26		
Checked By:	Date:	Size: B			

Index	Service Part #	File Name	Description	Qty
1		JA311-ASM-29		1
2	A00-0021	FLANGE-NUT-1-4	Flange Nut, 1/4", YD	2
3	A00-0023	FLANGE_BOLT_1-4X3-4	Flange Bolt, 1/4" x 3/4", YD	6
4	A00-0059	FLANGE-NUT-5-16	Flange Nut, 5/16", YD	2
5	A00-0061	TEKT-0021	Striker Mounting Plate	3
6	A00-0084	TEKT-0070	Gas Shock	2
7	A00-0085	TEKT-0069	Gas Shock Stud	2
8	A00-0101	STRIKER-PIN	Striker Pin	3
9	A00-0141	ROUND_MIRROR_6_INCH	External 6" Mirror	2
10	A00-0371	TEKT-0175	New LED Work Light (Blazer Intl)	2



Notice of Confidentiality

This material is property of Tektite Manufacturing Inc and is not to be used by the recipient for any purpose other than the purpose for which it was transmitted. The material remains the property of Tektite and shall be returned upon request. The material may not be reproduced or disclosed to third parties without the written consent of Tektite.

Tolerances:
Unless otherwise specified

X.X = ± 1/16"
Angular = ± 1.0°

Tektite Manufacturing Inc. 24157 Hwy 3, Box 639, Winkler MB, R6W 4A8, Canada				
Req'd:	CNC:	Description:		
1 req		Accessories		
Drawn By:	Date:	Units:	File Name:	
Daryl Furkalo	2016-11-28	Imp.	JA311-ASM-66	
Checked By:	Date:	Size:		
		B		