

## Yanmar 325 / 425 ROPS Cab



Note: Cab may be shown with optional accessories.

### **Yanmar Yan425-01 ROPS Cab**

This ROPS cab is designed and built to fit:  
Yanmar 325 and 425 tractors.

Designed and built by:

**Tektite Manufacturing Inc:**

P.O. Box 639, 427 Buffalo Street  
Winkler, MB, Canada  
R6W 4A8  
PH: 204-331-3463  
[sales@tektite.ca](mailto:sales@tektite.ca)

One-year standard product warranty provided by Tektite Manufacturing Inc.  
[www.tektite.ca](http://www.tektite.ca) / [www.tektitecabs.com](http://www.tektitecabs.com)



**DO NOT PROCEED FURTHER UNTIL YOU HAVE READ THE INFORMATION BELOW.**

- 1) Always wear personal protective equipment.
- 2) A minimum of two people is necessary to safely install the cab.
- 3) This ROPS cab is heavy. A lift assist device such as an overhead hoist or high lift forklift is required.
- 4) Ensure your work area is well ventilated. The installation requires the starting of the tractor which will produce dangerous carbon monoxide fumes.
- 5) Read through the entire installation manual first.
- 6) Follow the installation instructions in order.
- 7) Reading the operators manual prior to using the ROPS cab.

Tektite Manufacturing Incorporated thanks you for purchasing a Yanmar 325 / 425 ROPS cab! Tektite has worked very hard to design and build this ROPS product and we hope that it provides you with many years of protection.

Tektite's products are designed to provide safe and dependable service during operation when they are properly maintained according to the instructions. Please read this installation manual carefully before installing and using this product.

The photos/illustrations provided in this manual may not provide all the detail needed and are for reference only.

All directions provided are from the reference point of the tractor seat facing the steering wheel. All left and right references are from this viewpoint.

For reference, please fill in the information below. This will assist your dealer in providing service for this product. It is advisable that this information be provided to your insurance company as well in the event that the tractor is lost or damaged.

Vehicle Model: \_\_\_\_\_

Tektite Serial Number: \_\_\_\_\_

Date of Purchase: \_\_\_\_\_

Dealer Name: \_\_\_\_\_

## Parts List Standard Cab:

### Mounting Parts Bag:

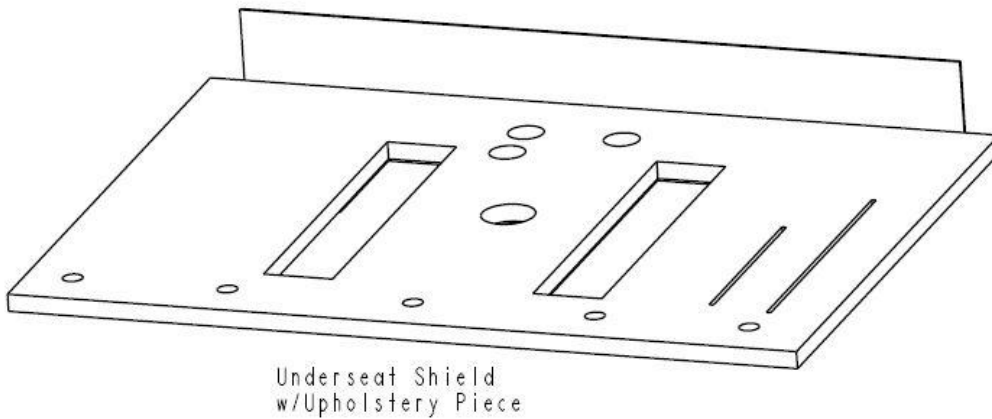
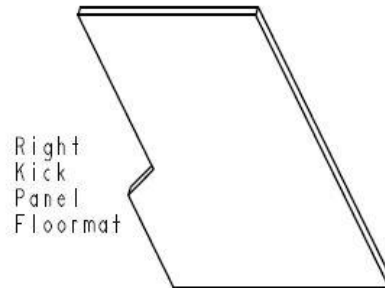
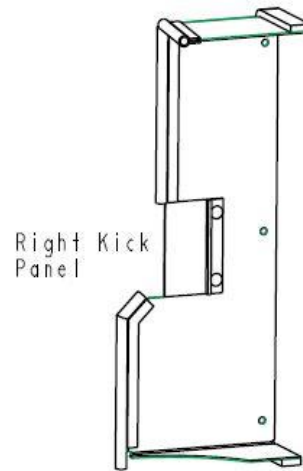
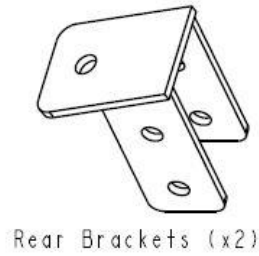
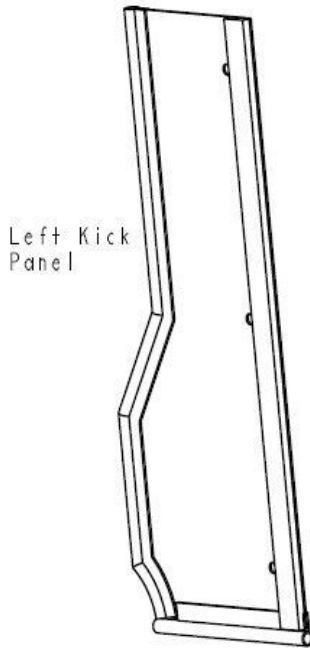
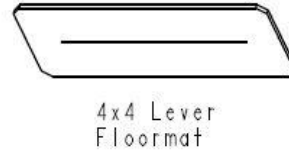
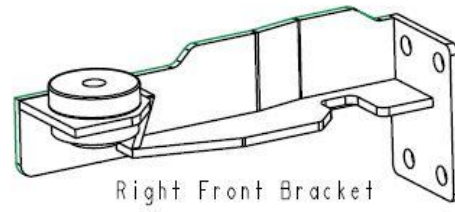
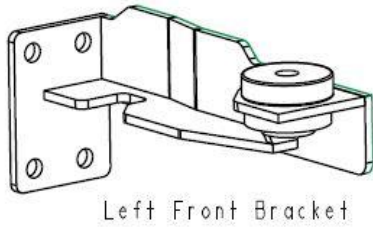
Description	Qty
Washer, Flat, ¼" Structural, YD	4
Nut, Flange, 5/8", Gr. 8, YD	4
Bolt, Hex, 5/8" x 3", Gr. 8, YD	4
Bolt, Hex, ½" x 3 ½", Gr. 8, YD	4
Bolt, Hex, ½" x 4 ½", Gr. 8	2
Nut, Flange, ½", Gr. 8, YD	4
Bolt, Flange, 5/16" x ¾"	4
Nut, Flange, 5/16"	4
Bolt, Flange, ¼" x 3/4", YD	11
Nut, Flange, ¼"	2
Wire Loop Connector, 1/4"	2
Wire Loop Connector, 3/8"	2
Shrink Tube, 1" Long	8
Wire Extensions (Black and Red 16GA wires)	12" – 2 sets
No Loader Spacers, 7/16" (NO LOADER only)	8
Bolt, Hex, M12 x 40MM, Gr. 10.9, YD (NO LOADER only)	8
Zip Ties, Standard	6

### Loose Components:

Description	Qty
Front Bracket, LEFT & RIGHT	L&R
Rear Bracket	2
Isolator, Rubber (pre-installed on brackets)	4
Under Seat Shield (w/upholstery)	1
Left Kick Panel Shield	1
Right Kick Panel Shield	1
Right Kick Panel Shield Floormat	1
NDA-X, 1" x 1"	38"
4x4 Lever Adhesive Floormat	1
LH Floor Lever Adhesive Floormat	1

### Parts List Heater:

Description	Qty
HS-6 hose clamps	4
Zip Ties, Standard	6
Heater Hose, 3/8" ID (pre-installed)	12 FT
Fitting, Elbow, 3/8NPT x 3/8" barb	1
Fitting, Straight, 16MM male x 3/8 NPT Female	1
Fitting, Straight, 3/8NPT x 3/8" barb	1



**Standard Cab Installation Instructions:**

Prior to starting, park the tractor in a well-ventilated area, put the loader down along with all tractor attachments.

Remove step from tractor.

Unbolt and remove upper roll hoop from the 2-post ROPS.

Unbolt the rear flasher lights on tractor and disconnect harness.

Unbolt the rear SCV from the 2-post bracket and let hang down. Remove the bracket completely, SCV will fasten to the cab.

Take the 1" x 1" NDAX provided, and cut two 5" long pieces. Tuck one of the pieces between the 2-post ROPS and the fender on each side down where shown below.

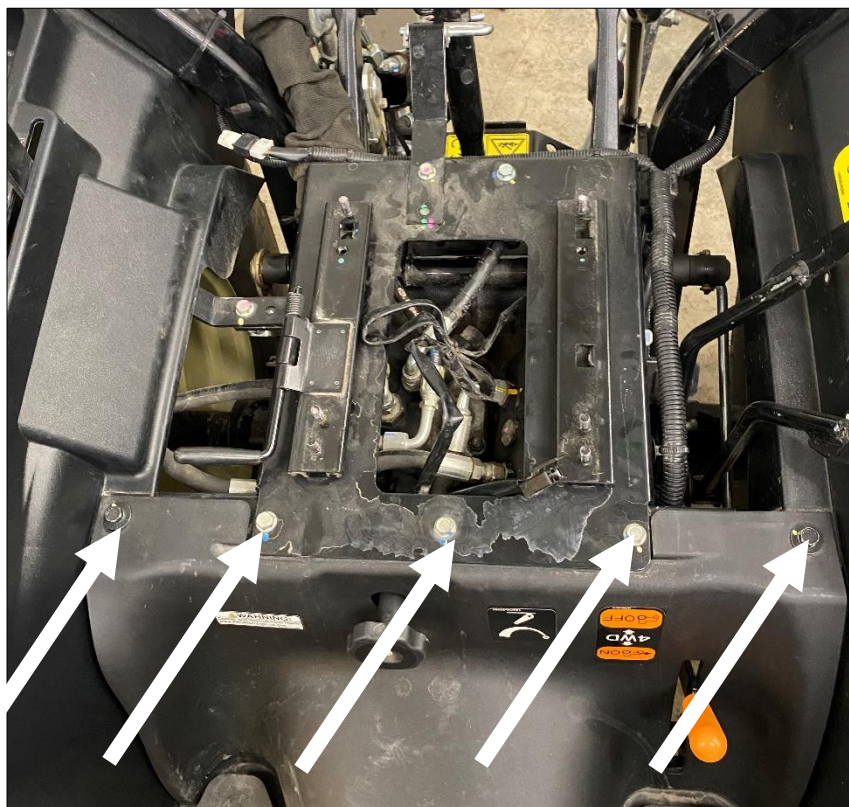


Disconnect the seat harness wire.

Un-bolt and remove seat and seat track from the tractor.



Remove the five front fasteners in front of the seat.



Take the underseat shield, with full upholstery cover and position it onto the seat mounting area. Slide levers through the slits in the upholstery, cutting if necessary to ensure full range of motion of controls. (old photo of shield shown)



Bolt the front of the underseat shield into place with the five fasteners removed earlier.

Re-install the seat track onto the tractor.

Re-install the seat onto the seat track.

Take 4x4 lever pedal floormat and install around lever as shown. Peel adhesive back off and install.





Take left lever floormat and install around pedal through platform. Peel adhesive back off and install.

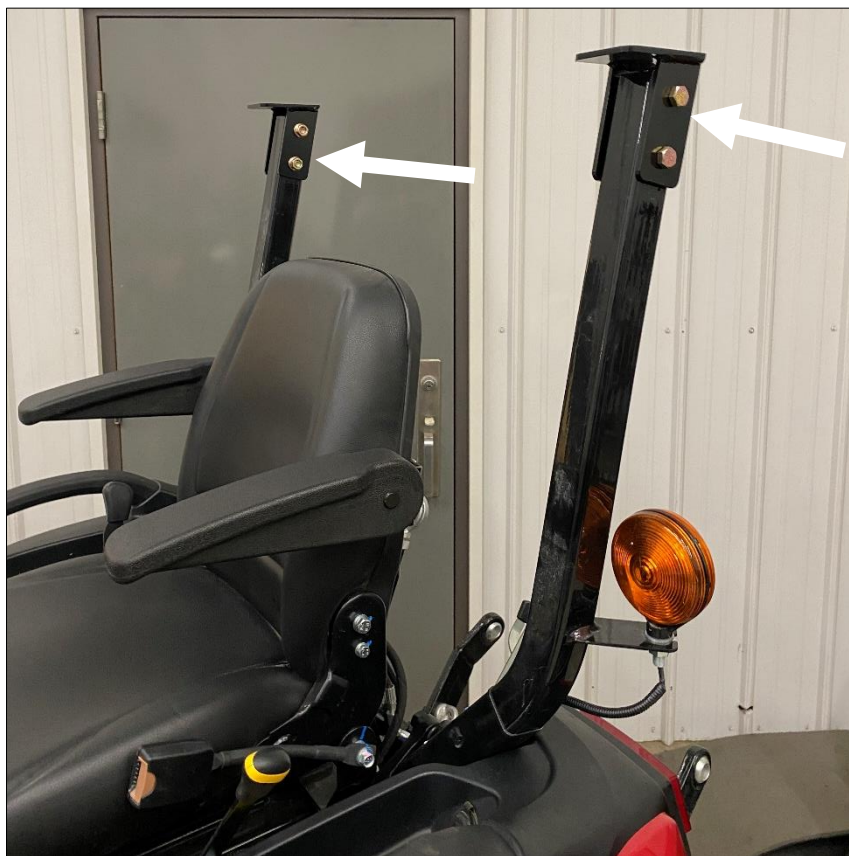
Take the left front bracket. Note the four hole pattern, and remove the four corresponding bolts in the back of the front end loader mounting arm. Fasten into place with the original hardware. If no loader is present, no loader spacers will be required. DO NOT torque until later.



Take the right front bracket. Remove the same four fasteners at the back of the loader on the right side. Position bracket against loader, sliding carefully around the pedals and loader sub-frame. Fasten into place with original hardware. If no loader is present, no loader spacers will be required. DO NOT torque until later.



Take one of the rear brackets and position on top of the lower left 2-post ROPS, with the mounting plate facing forward. Use the provided  $\frac{1}{2}$ " x 3  $\frac{1}{2}$ " hex bolts and flange nuts to loosely attach the bracket to the 2-post. DO NOT torque until later.



Take the other rear bracket and position on top of the lower right 2-post ROPS, with the mounting plate facing forward. Use the provided  $\frac{1}{2}$ " x  $3\frac{1}{2}$ " hex bolts and flange nuts to loosely attach the bracket to the 2-post. DO NOT torque until later.

Return to the cab to remove the doors. To release the gas shock, slide a flat screwdriver underneath the small clip on the end that must be pulled UP in order to release the shock from the ball stud. **The shock will release very easily when this is accomplished.** Lift the left door assembly straight up and off the cab. Put aside for now. Repeat for right door assembly.





Take one of the  $\frac{1}{2}$ " x 4  $\frac{1}{2}$ " hex bolts and fasten to the weld nut located at the top rear corner of the door opening on the left side. Repeat for the right side. These are the cab lift bolts.

Attach a lift strap or chain to the two lift bolts, then attach to an overhead hoist or forklift.

Un-bolt cab from the shipping pallet and lift cab up.

Carefully position the cab directly over the tractor. SLOWLY, lower the cab down. It is necessary to slide behind the 2-post and forward.

Lower cab down until mount plates touch the rubber isolators, front and back.

For the front isolator fasteners, insert the  $\frac{5}{8}$ " x 3" hex bolt from the top, use the heavy  $\frac{1}{4}$ " thick flat washer UNDER the bracket, and then the  $\frac{5}{8}$ " flange nut.

For the rear isolator fasteners, insert the  $\frac{5}{8}$ " x 3" hex bolt, heavy flat washer, with the  $\frac{5}{8}$ " flange nut underneath the rear brackets.

Once all fasteners are started, release the overhead hoist of all tension.

Apply 205 ft-lbs of torque to the four ROPS isolator fasteners first. Then tighten front and rear brackets after that.  $\frac{1}{2}$ " fasteners can receive 100 ft-lbs of torque.

Remove the cab lift bolts, store if cab will be removed seasonally.

Locate the power and ground wires at the bottom of the left A-Post. Route the wires towards the starter of the tractor.

Connect the black wire to a ground bolt on the starter. Shorten wire as necessary, solder loop onto end of wire and connect.

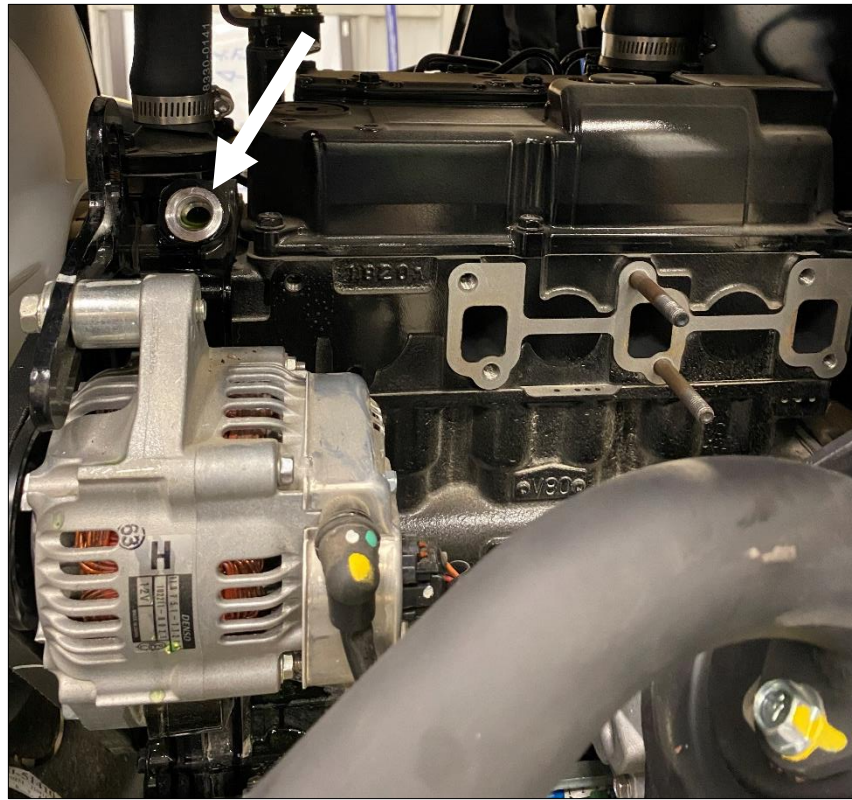


Connect the red wire to the heavy wire location on the starter. Shorten wire as necessary, solder loop onto end of wire and connect.

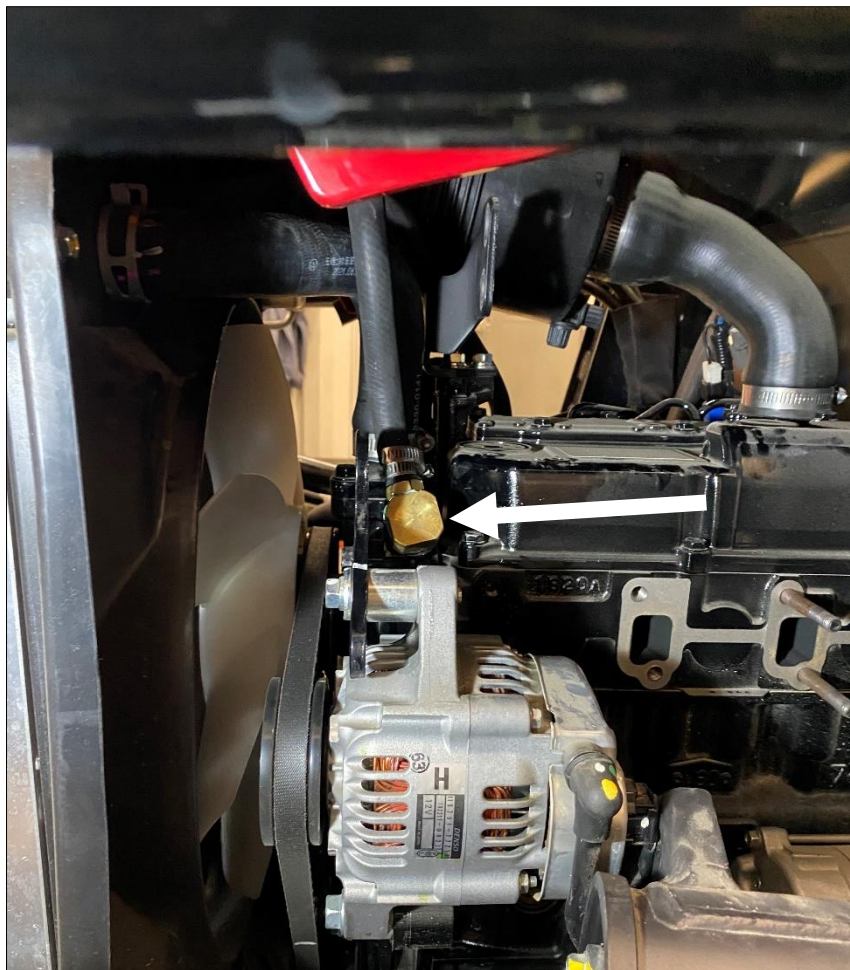
**Proceed with the following steps for the heater installation.**

Drain the engine antifreeze.

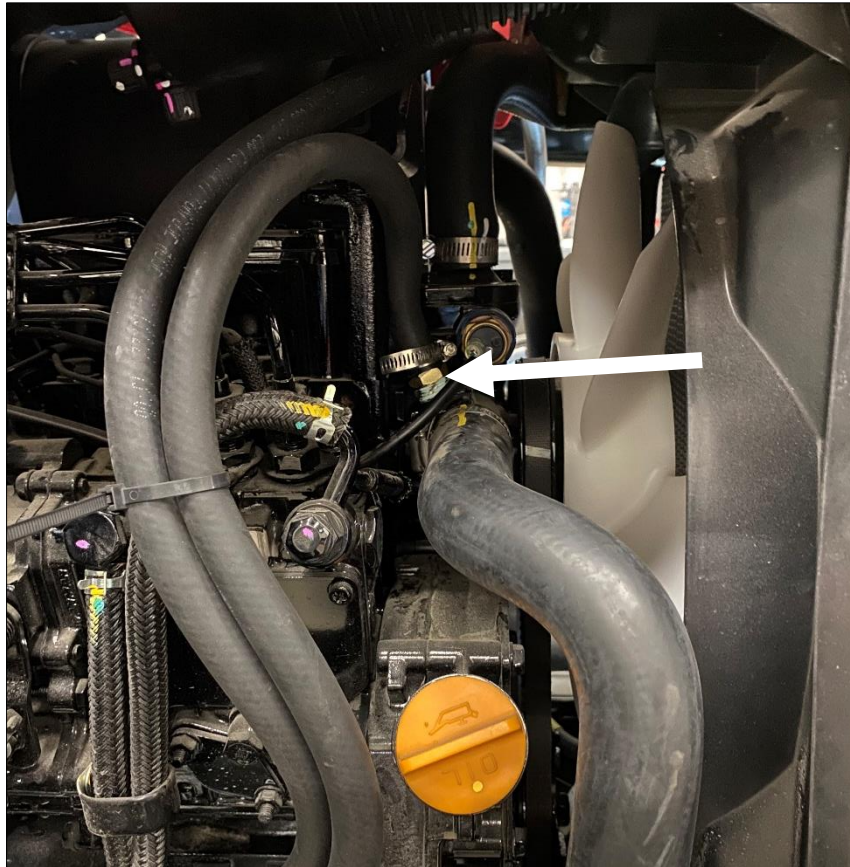
Locate the plug on the left side of the engine, above the alternator. Remove plug and install straight fitting, 16mm male with 3/8NPT female end. Use a water sealant around the threads of the fitting. It may be necessary to remove the muffler to provide better access to this location.



Install elbow fitting, 3/8NPT x 3/8" barb into open port on fitting just installed.



Locate the plug on the right side of the engine on the horizontal part of the water pump housing. Remove plug and install 3/8NPT x 3/8" barb straight hitting. Use a water sealant around the threads of the fitting.



Cut hose. Connect heater hose to each fitting, securing into place with provided hose clamps.

Re-fill engine coolant.

Start engine, turn heater on and run engine to purge system of air. Run with radiator cap off and at higher throttle in order to get thermostat to open and cycle coolant into radiator system. It will be necessary to top coolant up a few times to properly fill system.

Take the left kick panel and position on the inside of the cab, front lower left. Use the provided  $\frac{1}{4}$ " x  $\frac{3}{4}$ " flange bolts and fasten shield onto cab.





Take 8" of 1" x 1" NDAX and install around front edge of right pedal board.

Take the right kick panel and position inside of cab, on top of the shield welded in. Use the provided  $\frac{1}{4}$ " x  $\frac{3}{4}$ " flange bolts and fasten shield to cab.

Slide the provided floormat cover around pedal that goes through kick panel shield. Glue into place with High Strength 90 aerosol glue. Notch floormat if necessary.

Wire harness for the tractor flasher lights need to be extended. Use provided 12" wires and shrink loom. Going one wire at a time, cut wire, splice in 12" wire and solder into place. Use shrink tube over each solder joint. Do all 4 four wires.

Take the left flasher light, route wires through hole in the mount tab on lower C-Post. Fasten light into place with the factory nut. Re-connect the wire harness, use zip ties to secure into place.



Take the right flasher light, route wires through hole in the mount tab on the lower right C-post. Fasten in place with the factory nut. Re-connect the wire harness, use zip ties to secure into place.

Un-bolt forward hydrostatic pedal top bolt, and loosen bottom bolt. Pivot bracket back as far as possible and drill new  $\frac{1}{4}$ " hole to re-orient pedal into place and prevent it from bottoming out of right kick panel.





Take 12" of NDAX and install inside of lever control on right.



To ensure a proper weather seal, use a black silicone sealant around all small open cracks between the cab weather stripping and the tractor components.

## Yanmar 325 / 425 ROPS Cab



Note: Cab may be shown with optional accessories.

### **Yanmar Yan425-01 ROPS Cab**

This ROPS cab is designed and built to fit:  
Yanmar 325 and 425 tractors.

Designed and built by:

**Tektite Manufacturing Inc:**

P.O. Box 639, 427 Buffalo Street  
Winkler, MB, Canada  
R6W 4A8  
PH: 204-331-3463  
[parts@tektite.ca](mailto:parts@tektite.ca)

One-year standard product warranty provided by Tektite Manufacturing Inc.  
[www.tektite.ca](http://www.tektite.ca) / [www.tektitecabs.com](http://www.tektitecabs.com)





**DO NOT PROCEED FURTHER UNTIL YOU HAVE READ THE INFORMATION BELOW.**

- 1) Always wear personal protective equipment.
- 2) A minimum of two people is necessary to safely install the cab.
- 3) This ROPS cab is heavy. A lift assist device such as an overhead hoist or high lift forklift is required.
- 4) Ensure your work area is well ventilated. The installation requires the starting of the tractor which will produce dangerous carbon monoxide fumes.
- 5) Read through the entire installation manual first.
- 6) Follow the installation instructions in order.
- 7) Reading the operators manual prior to using the ROPS cab.

**Tektite Limited Warranty**

Tektite Manufacturing Inc. ("Tektite") warrants to the original purchaser (the "Claimant"), that Tektite products will be free from defective materials or workmanship, under normal use and service, for a period of (1) full year from the original invoice date. Tektite's liability under this Limited Warranty is limited to the repair or (at the discretion of Tektite) the replacement of those components of its products, which were manufactured by Tektite that are defective in materials or workmanship. Tektite shall have no liability under this Limited Warranty unless Tektite is notified of the defect during the stated Warranty Period.

Limitations and Exclusions: Tektite has no responsibility to a Claimant under this Limited Warranty or on any other basis for any of the following:

- a) defects caused, in whole or in part, by accident or misuse, negligence or failure to maintain the product or component;
- b) products or components sold to a customer on an "as is" basis;
- c) wiper blades, light bulbs, fuses, clear vinyl or other consumables;
- d) glass where the point of failure has not been preserved intact and delivered to Tektite for analysis of the cause of the failure;
- e) products or components which have been modified after shipping from Tektite to its customer;
- f) transportation charges for returned, repaired or replacement items;
- g) defects that are subject of a Tektite initiated recall where the Claimant fails to comply with the terms of the recall notice that comes to the attention of the Claimant;
- h) components of Tektite products that are manufactured by third parties (Tektite's only obligation in relation to such components shall be to accord to the Claimant the benefit of any transferable warranty accorded to Tektite by third party manufacturer);
- i) defects in workmanship or materials in products or components that are repaired or replaced by Tektite unless Tektite is notified of the new defect within the Warranty Period that applied to the original product or component that has been repaired or replaced;
- j) defects that result, in whole or in part, from inadequate engineering or specifications provided to Tektite by its customer;
- k) any actual or alleged deficiency in technical or engineering services or advice provided by Tektite to its customer whether provided for valuable consideration or otherwise;
- l) consequential damages, or any other damages whether foreseeable or not, resulting from the defect or any delay in remedying the defect;
- m) any breach or alleged breach of any implied warranty of merchantability or fitness for particular purpose of use;
- n) defects or part failure due to misuse or failure to follow recommended cab installation procedures; and
- o) travel expenses, including mileage.

This Limited Warranty expresses the entire obligation of Tektite, its officers, directors, agents and employees, to its customer or any Claimant in respect of any defect in workmanship, or materials of any product or component sold or manufactured by Tektite whether on grounds of breach of contract, negligence or other tortious liability, breach of express or implied warranty or other basis in law of any jurisdiction.

Acceptance by a customer of delivery of products of Tektite constitutes acceptance of this Limited Warranty in lieu of all other warranties express or implied including without limitation all implied warranties of merchantability or fitness for particular purpose or use and constitutes acceptance by customer of the exclusions and limitations of the liability of Tektite set out above. Once received, the cab should have ALL exterior cardboard, Styrofoam wrapping removed for immediate inspection of product to ensure that no damages have occurred during transportation. Outer coverings should stay off the cab and the cab be stored indoors in a controlled environment. The warranty card must be completed and returned to Tektite.

Warranty claims should be reported to [parts@tektite.ca](mailto:parts@tektite.ca). A warranty claim form and instructions will be provided at this time. Warranty work not pre-authorized by Tektite may not be covered by this warranty agreement. Labor rate and time allowances are fixed by Tektite. Approved warranty claims will be issued in the form of credits applied to customer account.



## Safety Precautions

### *Safety First*

Read these instructions carefully. It is essential that you read the instructions and safety regulations before you attempt to assemble or use the features that are on this cab/ROPS.

**Danger:** Indicates an immediate hazardous situation which, if not avoided, will result in death or serious injury.

**Warning:** Indicates a potentially hazardous situation which, if not avoided, may result in death or serious injury.

**Caution:** Indicates a potentially hazardous situation which, if not avoided, may result in minor or moderate injury.

**Important:** Indicates that cab or property damage may result if instructions are not carefully followed.

**NOTE:** All products are designed to give safe, dependable service if they are operated and maintained according to instructions. It is the owner's responsibility to be certain anyone operating this product reads this manual, and all other applicable manuals, to become familiar with this cab and all safety precautions. Failure to do so could result in serious personal injury or cab damage. If you have any questions, consult your dealer. Read and understand this manual before operation.

**NOTE:** A safe operator is the best assurance against accidents. All operators, no matter how experienced they may be, should read this operator manual and all other related manuals before attempting to operate features in this cab/ROPS and operate the base tractor. Please read the following section and pay particular attention to all safety recommendations contained in this manual and those labelled on the cab and on the tractor.

## General Safety

1. Never let an unqualified or untrained driver operate the tractor.
2. Keep a fire extinguisher, with ABC rating securely fastened in the ROPS. Maintain it and be familiar with its use.
3. Do not carry passengers.
4. Never operate the tractor in a closed building for a prolonged period. Ensure adequate ventilation is present, as engine exhaust fumes are poisonous and can kill.
5. Always keep sleeves, jackets or other loose clothing relatively tight and belted. Loose clothing may catch on moving parts and result in severe personal injury or death.
6. Provide a first-aid kit, securely attached inside of the ROPS for use in case of accident.
7. Never jump from the tractor. There is a danger of tripping or falling on protruding parts.
8. Use steps and hand holds when mounting and dismounting the tractor, or for servicing components too high to reach from the ground.
9. When seated in the ROPS, fasten seat belt before starting the engine. A proper seat belt must be worn at all times when using a ROPS.
10. Safety devices and shields are intended to protect operators from injury or death. Under no circumstances should they be modified, disabled or removed.

## Operating Safety

1. Always operate the tractor controls while sitting in the operator's seat.
2. Lock seat in position and buckle seat belt before operating the tractor.
3. Avoid abrupt sharp turns at high speeds.
4. On sloped terrain, do not make sharp turns as machine stability could be compromised.
5. Operate the tractor smoothly, avoid abrupt starts and stops.
6. Keep all shields in place when operating the tractor.
7. Do not operate the tractor when you are tired, sick, or impaired.
8. Never operate the tractor in confined areas; visibility next to the tractor is reduced. Injury to bystanders or damage to the ROPS or equipment may result.

## Safety

Carefully review the procedures given in this manual and the tractor operator's manual with all operators annually. It is important that all operators become familiar with and follow safety precautions. Operating instructions must be given to everyone using the tractor before operation and at least once yearly thereafter in compliance with OSHA Regulations 1928.57 (United States).

## **Safe Operation on Rough Terrain**

1. Drive the tractor slowly on hillsides and curves to eliminate the danger of tipping. Avoid slopes which are too steep for safe operation. Avoid sharp uphill turns.
2. Always drive slowly enough over rough ground or obstructions. Drive at speeds slow enough to ensure your safety.
3. When driving out of a ditch, gully, or up a steep hillside, engage the clutch slowly. Avoid sharp uphill turns.
4. When descending steep grades, select a sufficiently low gear to maintain control with minimum use of braking.
5. Use caution when driving near the edge of a ditch or gully. It may cave in, causing the tractor to roll over.
6. Be alert when operating near trees, slopes and around obstructions. Tree branches can cause damage to ROPS components.

## **Maintenance Safety**

1. Remove mud, crop residue, chains, and tools from steps and operator's platform. They may interfere with pedal operation or entry/exit from tractor.
2. When servicing components are too high to reach from the ground use steps and handholds. Do not use fenders or shields that are not designed as steps.

## **Safe Highway Operation**

1. Before operating the tractor on, or near, public roadways check with your local authorities for any local regulations that will affect you.
2. Equip towed implements with slow moving vehicle (SMV) signs when traveling on public roads.
3. Install additional lights on implement rear to safeguard against rear end collisions.
4. Use hazard warning flashers as required by law when transporting or driving on public roads. If the tractor had warning flashers removed when mounting the ROPS, they must be replaced prior to operation on public roads.
5. Keep to the right, yielding right-of-way traffic, especially if pulling implements. Pull off the road and stop to allow motorists to pass. Drive on the road shoulder, if permitted by law.
6. Use extreme caution when pulling heavy loads at road speeds. Avoid hard application of the tractor brakes at high speed.
7. Always drive slowly near curbs, approaches or ditches.
8. If equipped, ensure headlights are aligned so they will not blind the operators of oncoming vehicles. If the tractor is not equipped with turn signals and law requires them, install them prior to operating on or near public roads.
9. Use your turn signals, checking for traffic well in advance of turning. If the tractor is not equipped with turn signals and law requires them, install them prior to operating on or near public roads.

## **Safety Decals**

1. Keep decals clean. Remove dirt with a wet clean cloth when necessary.
2. Replace safety decals if destroyed, missing, painted over or unreadable. If any safety decals are covered or obscured when the ROPS is mounted, it is recommended that you purchase replacement decals from the tractor manufacturer. Mount them in a readable location at, or near, their original location before operating the tractor.
3. New ROPS decals and tractor decals are available from your tractor dealer.

## **ROPS Safety**

1. Install the ROPS in accordance with Tektite mounting instructions. Failure to do so may affect the ROPS ability to withstand a roll over.
2. If the ROPS is subjected to alteration, structural damage or involved in an over turn accident, the entire structure must be replaced. Failure to do so may result in injury or death in the event of a roll over.
3. If the tractor is not equipped with seat belts, purchase approved seat belts from the tractor manufacturer or Tektite prior to operating the tractor.
4. Always fasten seat belts prior to operating the tractor.
5. Always operate the tractor from the operator's seat.
6. Remove mud, crop residue, chains and tools from steps and operator's platform. They may interfere with pedal operation or entry/exit from the tractor.
7. Remove all loose chains, tools, and equipment from the operator's platform. Failure to do so may cause injury or death in the event of a roll over.
8. Do not install the ROPS on a tractor model that the ROPS is not designated for (compatible tractor designations are printed on the ROPS serial number plate). The ROPS is designed specifically for individual models to ensure ROPS requirements will be met. Installing the ROPS on a non designated tractor may result in injury or death.

## **Emergency Exits**

The ROPS cab has two doors, either one can be used during an emergency.

## Operating Instructions

### Important

The following section locates, identifies and briefly describes the functions of all cab controls. All operators should familiarize themselves with control location and function prior to operating the tractor. Failure to do so may result in unsafe operation of the tractor and possible injury or death to operators and bystanders.

There is one switch plate located in the cab. The following switches are available, and their functionality is described.



### Cab Switch Plate

#### 1. Front Wiper Rocker Switch (standard)

Low position: Off

High position: On

Note: indicator light activates when wiper is on.

#### 2. Rear Wiper Rocker Switch (not available on all models)

Low position: Off

High position: On

Note: indicator light activates when wiper is on.

#### 3. Front Work Light Rocker Switch (standard)

Low position: Off

High position: On

Note: indicator light activates when work lights are on.

#### 4. Rear Work Light Rocker Switch (optional)

Low position: Off

High position: On

Note: indicator light activates when work light is on.



**5. Washer Momentary Switch (Front and Rear optional)**

Low position: On

Mid position: Off

High Position: On

**6. Beacon Rocker Switch (optional)**

Low position: Off

High position: On

Note: indicator light activates when work lights are on.

**7. Water Heater Fan Rocker Switch (standard)**

Low position: Off

High position: On

Note: indicator light activates when the heater is on.

Standard and optional features are individually fused, and the fuses can be accessed behind the plug in the middle of the switch-plate.

**Cab Circuit Protection**

The Tektite ROPS cab is wired to provide maximum protection against individual circuit overload. All optional components are fused internally behind the cab switch plate. Cab wiring is direct to the tractor battery. DO NOT leave options activated when tractor is not running as battery run down can occur.

Please note: Tektite does have a key switch power option to provide maximum protection against accidental battery rundown and circuit overload. A relay is ignition activated and prevents the operator from accidentally leaving fan motors, lights on after turning the tractor off and leaving for the day. A circuit breaker is provided to prevent the cab electrical components from drawing more power than they should be able to from a dead short. This option can come with your cab if selected or field installed at a later date.

**After your ROPS Cab has been installed:**

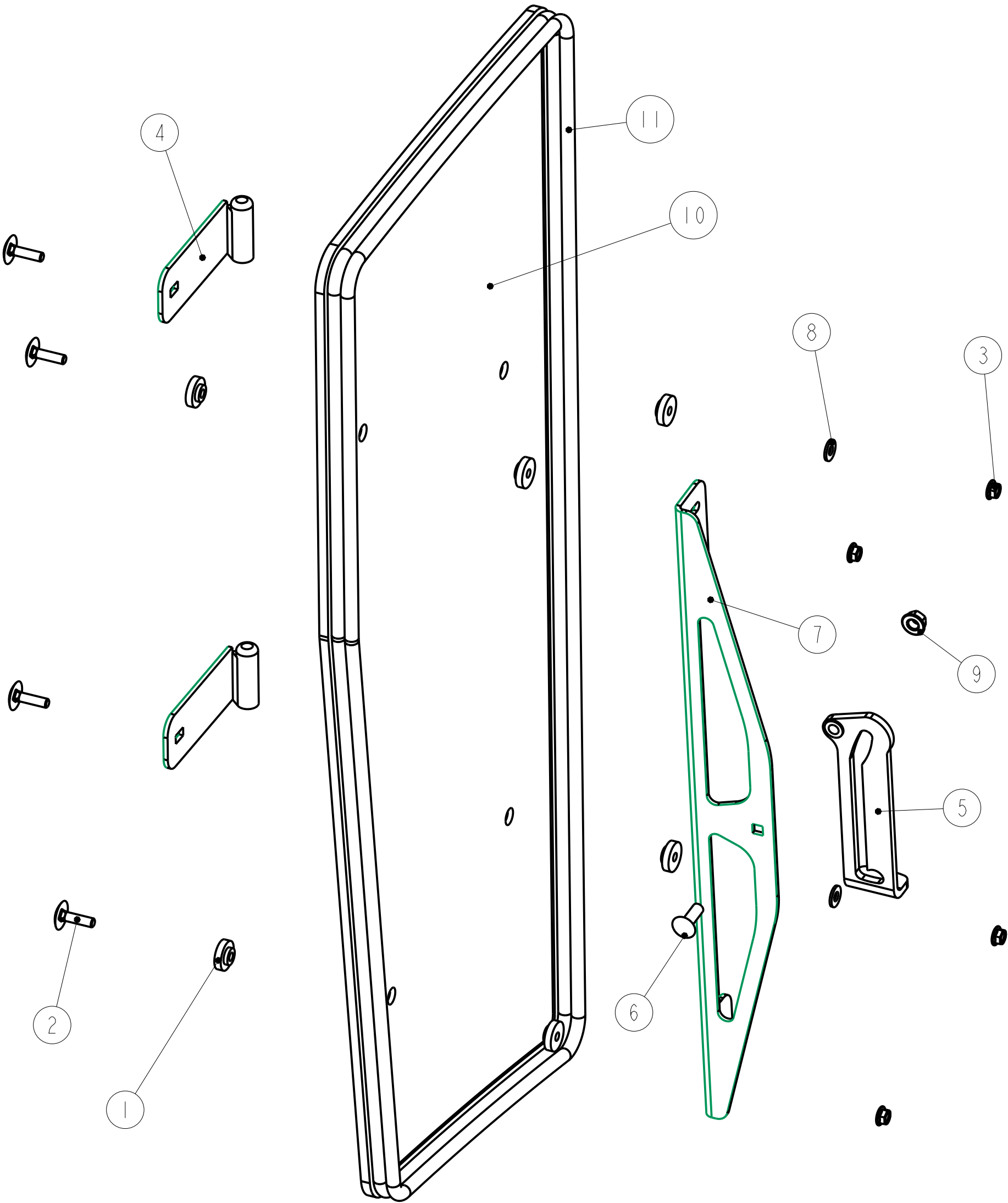
Before starting a tractor equipped with a Tektite ROPS cab:

1. Clear the operator platform of all tools. Tools left in or around the ROPS and tractor can cause operator interference which could lead to bodily injury and/or damage the machine.
2. Inspect the ROPS and tractor to ensure all bolts are tight and re-tighten if required.
3. Ensure that all pedals, levers, and controls have adequate clearance for normal operation.
4. Ensure that all electrical components of both the ROPS and tractor operate normally.
5. Ensure your door latches properly onto the striker pin. Immediately after installation, the ROPS frame may flex slightly from installation, and the door latch will need to be re-aligned for proper operation. Loosen the striker pin, striker mounting plate and door latch as necessary to get a proper alignment of the door striker.

**Service Parts Breakdowns:**

Following are parts breakdowns for components that may require service parts replacement during the life of the ROPS. If you require replacement parts, please contact the dealer that you purchased the ROPS from and indicate which parts you require.

Index	Service Part #	File Name	Description	Qty
1	A00-0013	TEKT-0009	5MM Bushing	8
2	A00-0019	STEP-BOLT1-4X1	Step Bolt, 1/4" x 1", MB	4
3	A00-0021	FLANGE-NUT-1-4	Flange Nut, 1/4", YD	4
4	A00-0046	TEKT-ASM-002R	Side Window Hinge Right	2
5	A00-0056	TEKT-0020	Side Window Latch, L60775	1
6	A00-0058	CARRIAGE_BOLT-5-16X1	Bolt, Carriage, 5/16"x 1", YD	1
7	A00-0087	TEKT-0028	Side Window Slider Bracket 2" tube	1
8	A00-0119	WASHER_1-4	Washer, Flat, 1/4" x 5/8"OD	2
9	A00-0413	FLANGE-NUT-5-16	Flange Nut, 5/16", YD	1
10	Y01-0002	YAN425-029	Side Window Glass	1
11	Y01-0007	YAN425-063-	Side Window Seal	1



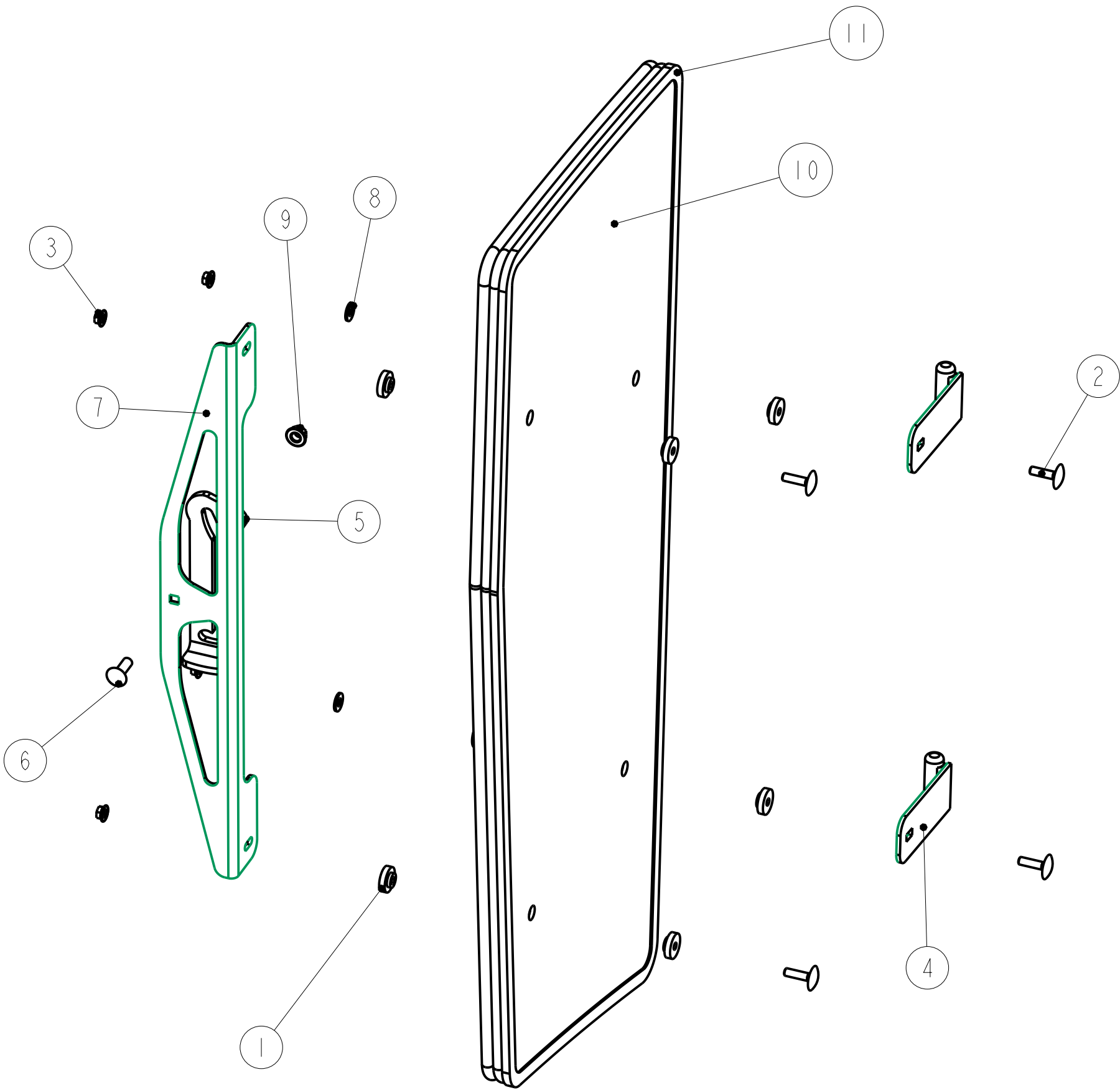
Notice of Confidentiality

This material is property of Tektite Manufacturing Inc and is not to be used by the recipient for any purpose other than the purpose for which it was transmitted. The material remains the property of Tektite and shall be returned upon request. The material may not be reproduced or disclosed to third parties without the written consent of Tektite.

Tolerances:  
Unless otherwise specified  
X.X = ±1/16"  
Angular = ± 1.0°

Tektite Manufacturing Inc. 427 Buffalo Str, Box 639, Winkler MB, R6W 4A8, Canada			
Req'd: 1 req	CNC:	Description: Complete LH Side Window Assembly	
Drawn By: Daryl Furkalo	Date: 2023-03-13	Units: Imp.	File Name: YAN425-ASM-07_OP
Checked By:	Date:	Size: B	Y01-0013

Index	Service Part #	File Name	Description	Qty
1	A00-0013	TEKT-0009	5MM Bushing	8
2	A00-0019	STEP-BOLT1-4X1	Step Bolt, 1/4" x 1", MB	4
3	A00-0021	FLANGE-NUT-1-4	Flange Nut, 1/4", YD	4
4	A00-0044	TEKT-ASM-002	Side Window Hinge Weldment	2
5	A00-0056	TEKT-0020	Side Window Latch, L60775	1
6	A00-0058	CARRIAGE_BOLT-5-16X1	Bolt, Carriage, 5/16"x 1", YD	1
7	A00-0087	TEKT-0028	Side Window Slider Bracket 2" tube	1
8	A00-0119	WASHER_1-4	Washer, Flat, 1/4" x 5/8"OD	2
9	A00-0413	FLANGE-NUT-5-16	Flange Nut, 5/16", YD	1
10	Y01-0002	YAN425-029	Side Window Glass	1
11	Y01-0007	YAN425-063R	Side Window Seal	1



Notice of Confidentiality

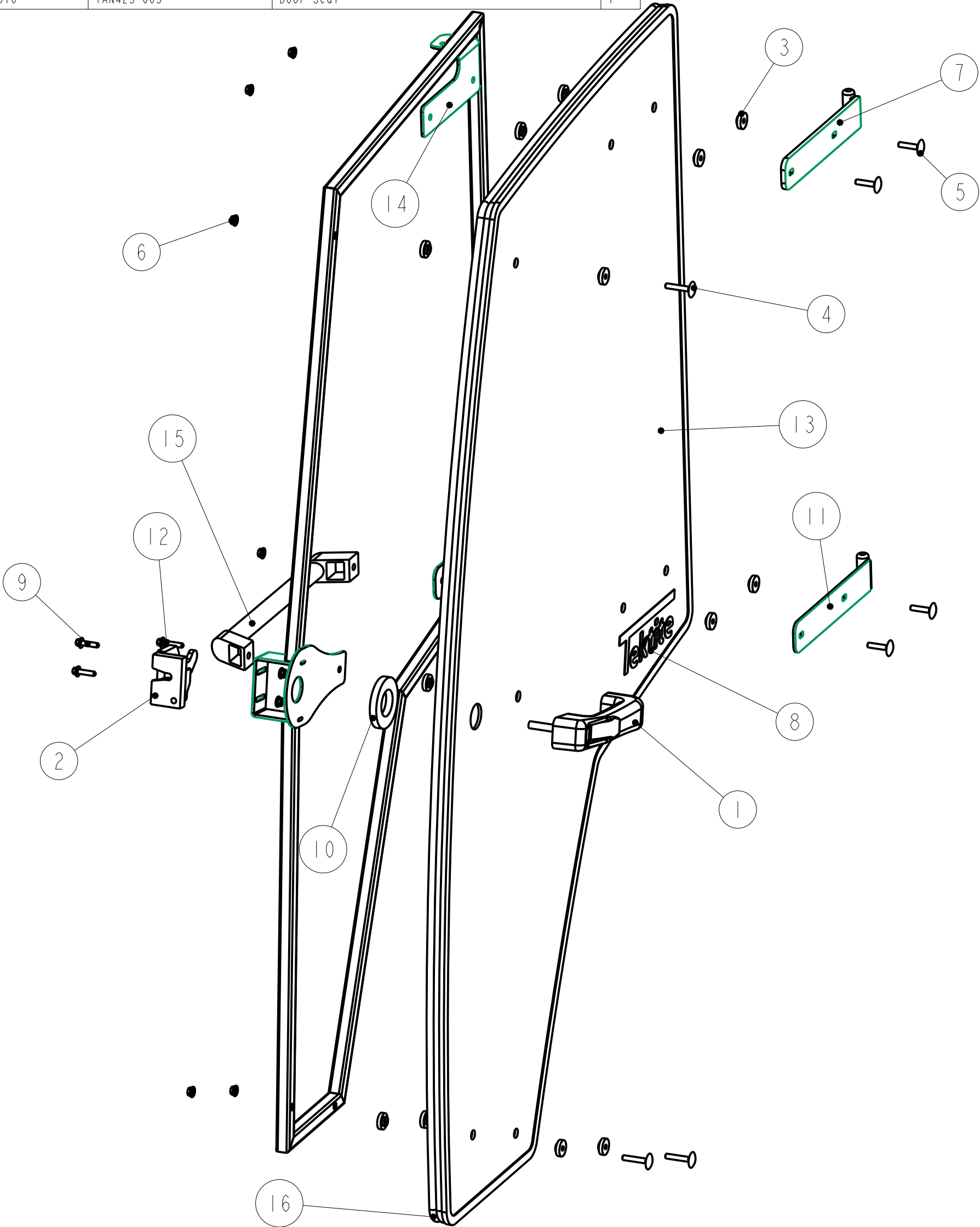
This material is property of Tektite Manufacturing Inc and is not to be used by the recipient for any purpose other than the purpose for which it was transmitted. The material remains the property of Tektite and shall be returned upon request. The material may not be reproduced or disclosed to third parties without the written consent of Tektite.

Tolerances:  
Unless otherwise specified  
X.X =  $\pm 1/16"$   
Angular =  $\pm 1.0^\circ$

Tektite Manufacturing Inc. 427 Buffalo Str, Box 639, Winkler MB, R6W 4A8, Canada			
Req'd: 1 req	CNC:	Description: RH Side Window Assembly	
Drawn By: Daryl Furkalo	Date: 2023-03-13	Units: Imp.	File Name: YAN425-ASM-07R_OP
Checked By:	Date:	Size: B	Y01-0014



Index	Service Part #	File Name	Description	Qty
1	A00-0001	DLP-HANDLE	Outside Push Button Handle	1
2	A00-0002	LEFT-LATCH	Suicide Door Left Latch	1
3	A00-0013	TEKT-0009	5MM Bushing	15
4	A00-0018	STEP-BOLT1-4X1-1-2	Step Bolt, 1/4" x 1 1/2", MB	3
5	A00-0020	STEP-BOLT1-4X1-1-4	Step Bolt, 1/4" x 1 1/4", MB	4
6	A00-0021	FLANGE-NUT-1-4	Flange Nut, 1/4", YD	9
7	A00-0039	TEKT-ASM-001	Left Door Hinge Weldment, Upper	1
8	A00-0041	TEKTITE-DECAL	Tektite Cab Decal - Solid White	1
9	A00-0118	FLANGE_BOLT_1-4X1	Flange Bolt, 1/4" x 1", YD	2
10	A00-0177	TEKT-0068	Handle Washer Spacer	1
11	A00-0228	TEKT-ASM-029	Left Door Hinge Weldment, Lower	1
12	A00-0295	FLANGE_BOLT_M6X30	Flange Bolt, M6x30, YD	1
13	Y01-0001	YAN425-030	Door Glass	1
14	Y01-0006	YAN425-ASM-09	Left Door Frame Weldment	1
15	Y01-0009	YAN425-064	Door Handle	1
16	Y01-0010	YAN425-065-	Door Seal	1



**Tektite Manufacturing Inc.**  
427 Buffalo Str, Box 639, Winkler MB, R6W 4A8, Canada

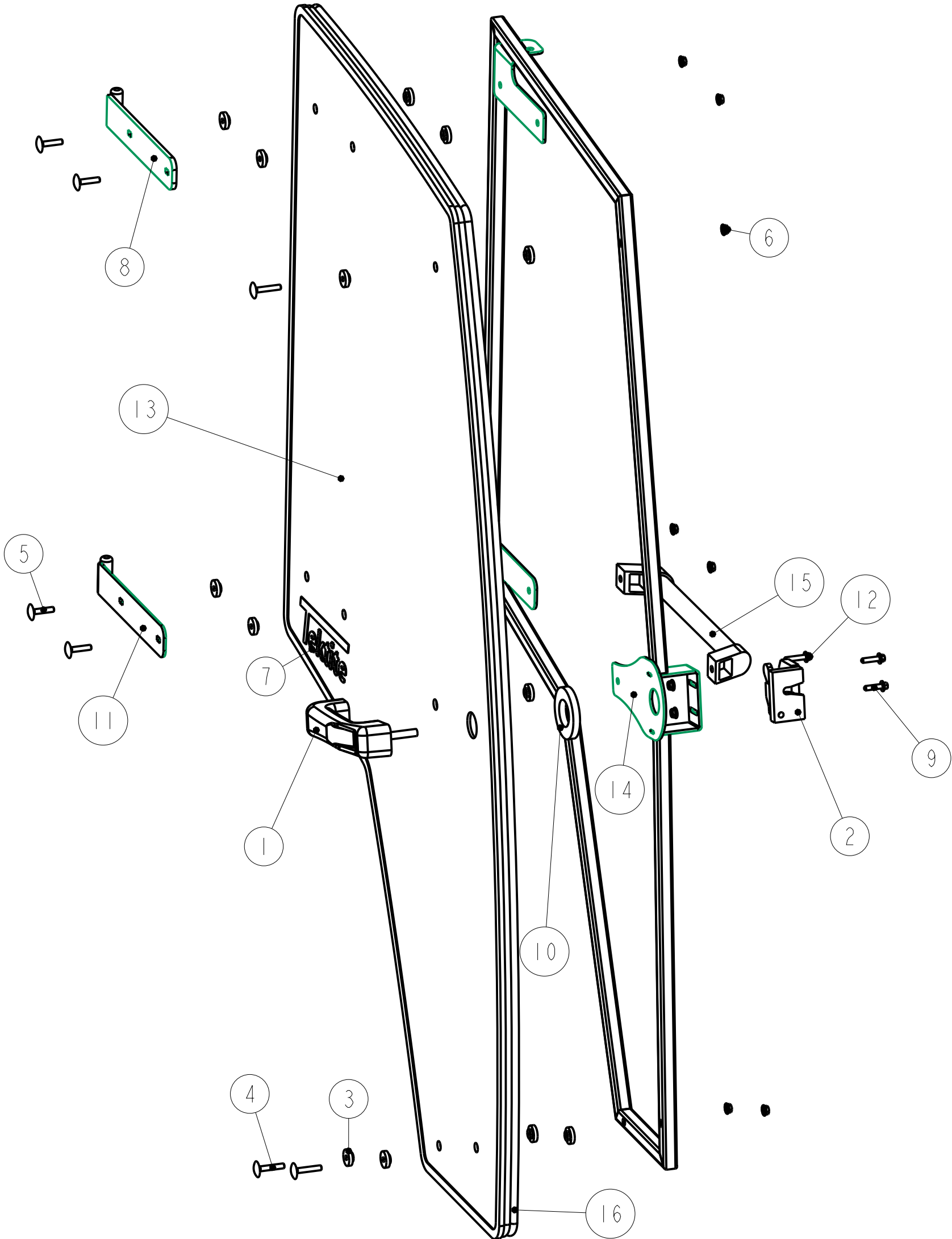
Notice of Confidentiality

This material is property of Tektite Manufacturing Inc and is not to be used by the recipient for any purpose other than the purpose for which it was transmitted. The material remains the property of Tektite and shall be returned upon request. The material may not be reproduced or disclosed to third parties without the written consent of Tektite.

Tolerances:  
Unless otherwise specified  
X.X = ±1/16"  
Angular = ± 1.0°

Req'd:		CNC:		Description:	
1 req				Left Door Assembly	
Drawn By:		Date:		Units:	File Name:
Daryl Furkalo		2023-03-13		Imp.	YAN425-ASM-08_OP
Checked By:		Date:		Size:	
				B	Y01-0015

Index	Service Part #	File Name	Description	Qty
1	A00-0001	DLP-HANDLE	Outside Push Button Handle	1
2	A00-0003	RIGHT-LATCH	Suicide Door Right Latch	1
3	A00-0013	TEKT-0009	5MM Bushing	15
4	A00-0018	STEP-BOLT1-4X1-1-2	Step Bolt, 1/4" x 1 1/2", MB	3
5	A00-0020	STEP-BOLT1-4X1-1-4	Step Bolt, 1/4" x 1 1/4", MB	4
6	A00-0021	FLANGE-NUT-1-4	Flange Nut, 1/4", YD	9
7	A00-0041	TEKTITE-DECAL	Tektite Cab Decal - Solid White	1
8	A00-0042	TEKT-ASM-001R	Right Cab Door Hinge Weldment, Upper	1
9	A00-0118	FLANGE_BOLT_1-4X1	Flange Bolt, 1/4" x 1", YD	2
10	A00-0177	TEKT-0068	Handle Washer Spacer	1
11	A00-0229	TEKT-ASM-029R	Right Door Hinge Weldment, Lower	1
12	A00-0295	FLANGE_BOLT_M6X30	Flange Bolt, M6x30, YD	1
13	Y01-0001	YAN425-030	Door Glass	1
14	Y01-0008	YAN425-ASM-09R	Right Door Frame Weldment	1
15	Y01-0009	YAN425-064	Door Handle	1
16	Y01-0010	YAN425-065R	Door Seal	1



Tektite Manufacturing Inc.

427 Buffalo Str, Box 639, Winkler MB, R6W 4A8, Canada

Notice of Confidentiality

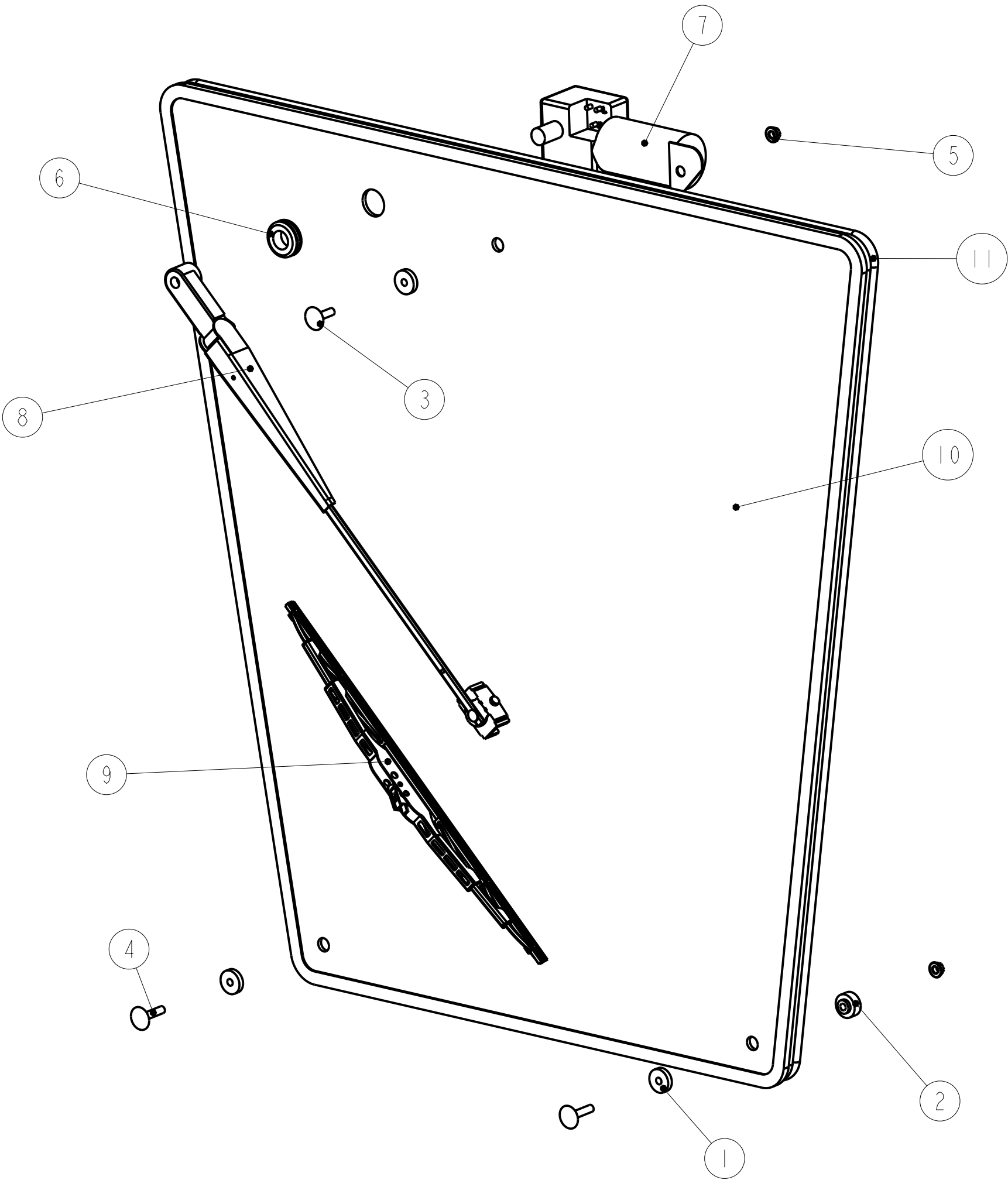
This material is property of Tektite Manufacturing Inc and is not to be used by the recipient for any purpose other than the purpose for which it was transmitted. The material remains the property of Tektite and shall be returned upon request. The material may not be reproduced or disclosed to third parties without the written consent of Tektite.

Tolerances:  
Unless otherwise  
specified

X.X = ±1/16"  
Angular = ± 1.0°

Req'd: <b>1 req</b>		CNC:		Description: <b>Right Door Assembly</b>	
Drawn By: <i>Daryl Furkalo</i>		Date: <b>2023-03-13</b>		Units: <b>Imp.</b>	File Name: <b>YAN425-ASM-08R_OP</b>
Checked By:		Date:		Size: <b>B</b>	<i>Y01-0016</i>

Index	Service Part #	File Name	Description	Qty
1	A00-0013	TEKT-0009	5MM Bushing	4
2	A00-0014	TEKT-0092	Thick Bushing	2
3	A00-0019	STEP-BOLT1-4X1	Step Bolt, 1/4" x 1", MB	1
4	A00-0020	STEP-BOLT1-4X1-1-4	Step Bolt, 1/4" x 1 1/4", MB	2
5	A00-0021	FLANGE-NUT-1-4	Flange Nut, 1/4", YD	3
6	A00-0033	315-080	Rear Wiper Shaft Grommet	1
7	A00-0043	WWF-MOTOR	WWF Wiper Motor, 1" Shaft	1
8	A00-0429	TEKT-ASM-074	WWF, Adjustable Radial Arm, J-Hook, Long	1
9	A00-0463	TEKT-ASM-069	Wiper Blade, 12", 2020	1
10	Y01-0003	YAN425-038	Rear Window Glass	1
11	Y01-0011	YAN425-066-	Rear Window Seal	1



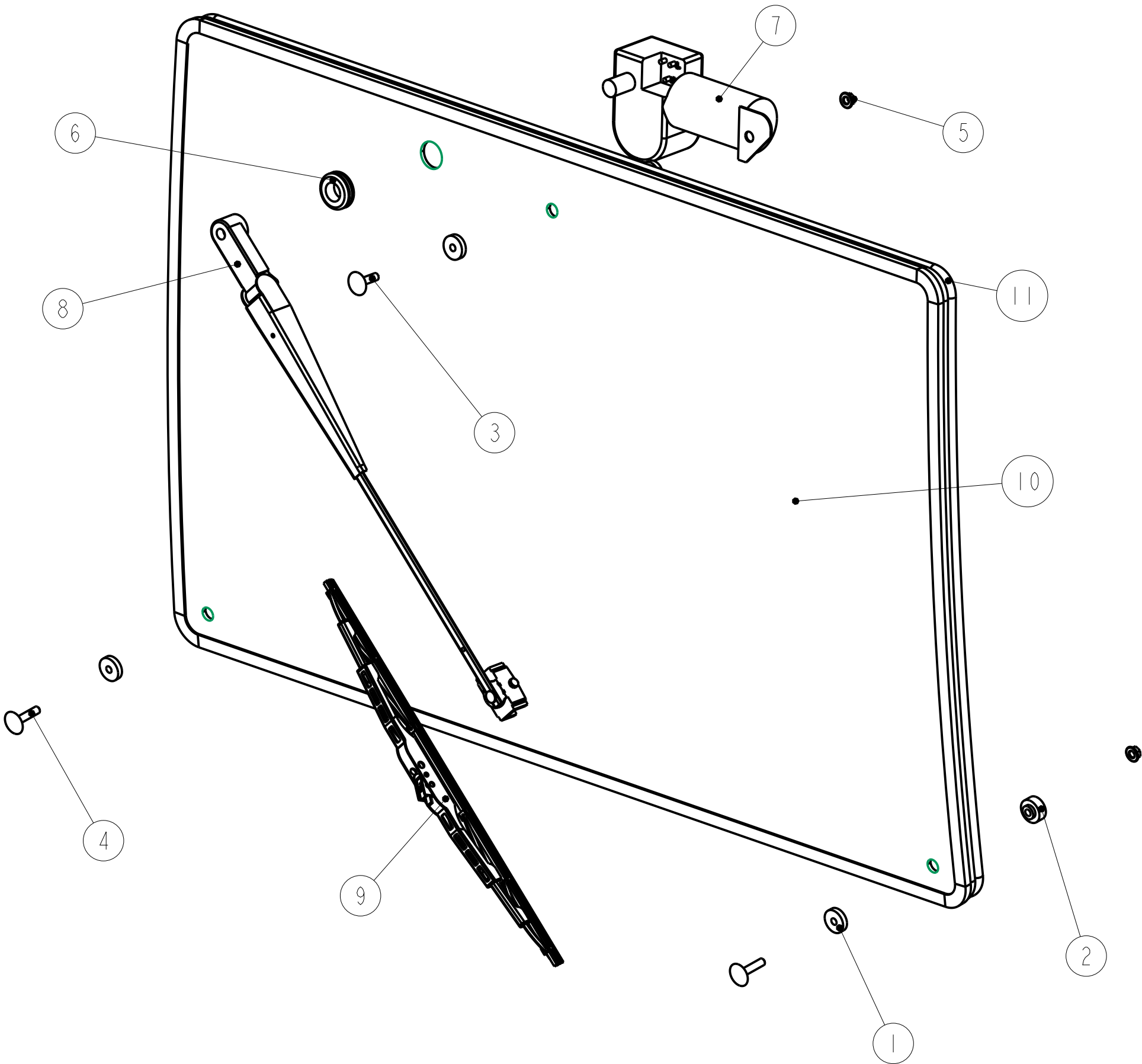
Notice of Confidentiality

This material is property of Tektite Manufacturing Inc and is not to be used by the recipient for any purpose other than the purpose for which it was transmitted. The material remains the property of Tektite and shall be returned upon request. The material may not be reproduced or disclosed to third parties without the written consent of Tektite.

Tolerances:  
Unless otherwise specified  
X.X = ±1/16"  
Angular = ± 1.0°

Tektite Manufacturing Inc. 427 Buffalo Str, Box 639, Winkler MB, R6W 4A8, Canada				
Req'd:	CNC:	Description:		
1 req		Rear Window Assembly		
Drawn By:	Date:	Units:	File Name:	
Daryl Furkalo	2023-03-13	Imp.	YAN425-ASM-13_OP	
Checked By:	Date:	Size:		Y01-0017
		B		

Index	Service Part #	File Name	Description	Qty
1	A00-0013	TEKT-0009	5MM Bushing	4
2	A00-0014	TEKT-0092	Thick Bushing	2
3	A00-0019	STEP-BOLT1-4X1	Step Bolt, 1/4" x 1", MB	1
4	A00-0020	STEP-BOLT1-4X1-1-4	Step Bolt, 1/4" x 1 1/4", MB	2
5	A00-0021	FLANGE-NUT-1-4	Flange Nut, 1/4", YD	3
6	A00-0033	315-080	Rear Wiper Shaft Grommet	1
7	A00-0043	WWF-MOTOR	WWF Wiper Motor, 1" Shaft	1
8	A00-0429	TEKT-ASM-074	WWF, Adjustable Radial Arm, J-Hook, Long	1
9	A00-0430	TEKT-ASM-073	Wiper Blade, 16", J-Hook	1
10	Y01-0004	YAN425-039	Upper Windshield Glass	1
11	Y01-0012	YAN425-067-	Windshield Seal	1



NOTE: Glass is flat, tension bends into place.

Notice of Confidentiality

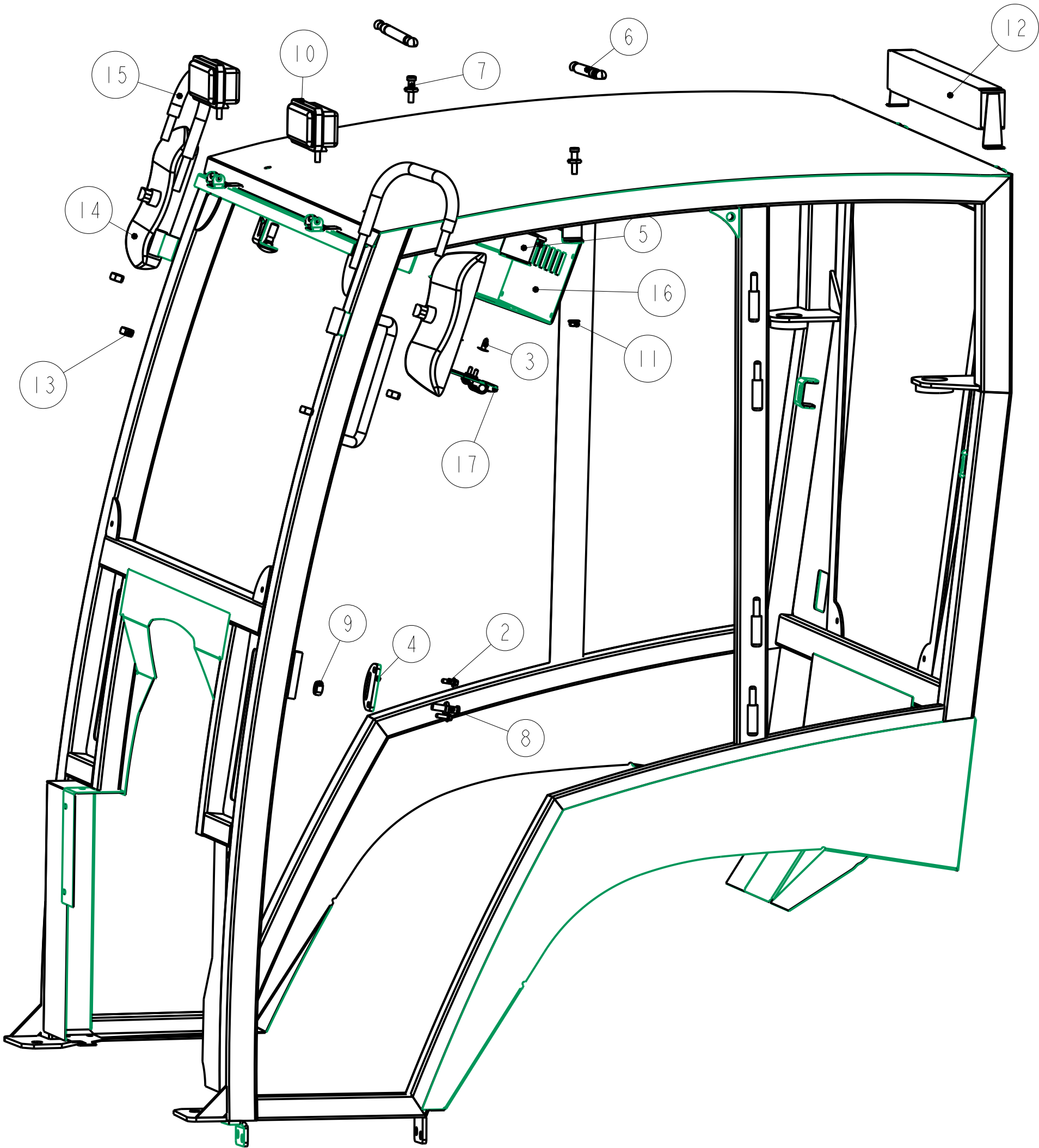
This material is property of Tektite Manufacturing Inc and is not to be used by the recipient for any purpose other than the purpose for which it was transmitted. The material remains the property of Tektite and shall be returned upon request. The material may not be reproduced or disclosed to third parties without the written consent of Tektite.

Tolerances:  
Unless otherwise specified  
X.X = ±1/16"  
Angular = ± 1.0°

Tektite Manufacturing Inc. 427 Buffalo Str, Box 639, Winkler MB, R6W 4A8, Canada			
Req'd:	CNC:	Description:	
1 req		Windshield Assembly	
Drawn By:	Date:	Units:	File Name:
Daryl Furkalo	2023-03-13	Imp.	YAN425-ASM-14_OP
Checked By:	Date:	Size:	
		B	Y01-0018



Index	Service Part #	File Name	Description	Qty
1		YAN425-ASM-11		1
2	A00-0023	FLANGE_BOLT_1-4X3-4	Flange Bolt, 1/4" x 3/4", YD	4
3	A00-0055	TEKT-0019	Fir Tree Fastener	2
4	A00-0061	TEKT-0021	Striker Mounting Plate	2
5	A00-0074	TEKT-ASM-004	Fuse Block Assembly	1
6	A00-0084	TEKT-0070	Gas Shock	2
7	A00-0085	TEKT-0069	Gas Shock Stud	2
8	A00-0101	STRIKER-PIN	Striker Pin	2
9	A00-0103	HEX-NUT-M12X1	Hex Nut, M12 x 1.0, YD	2
10	A00-0371	TEKT-0175	New LED Work Light (Blazer Intl)	2
11	A00-0413	FLANGE-NUT-5-16	Flange Nut, 5/16", YD	2
12	A00-0501	TEKT-0227	Upgrade Light Bar, Front/Rear	1
13	A00-0504	HEX-NUT-M12	Hex Nut, M12, Gr. 10.9, YD	4
14	A00-0519	TEKT-0244	Rectangular Mirror	2
15	A00-0520	TEKT-0243	Mirror Bracket Bar	2
16	A00-0530	TEKT-ASM-087	New Decal/Switchplate Steel Top Cab	1
17	J10-0025	JDPROGATOR-ASM-28	Fuse Block Cover Assembly	1



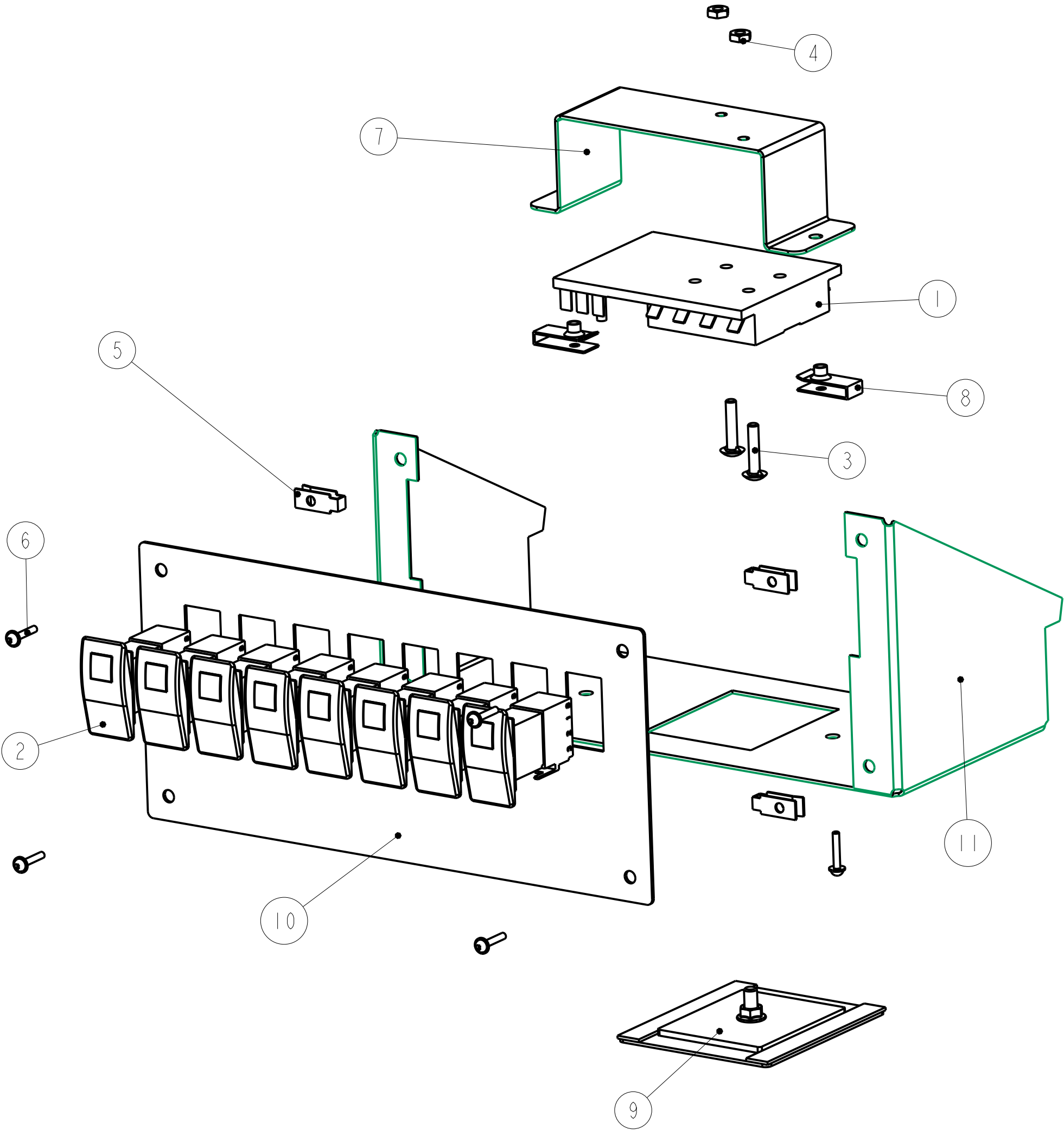
Notice of Confidentiality

This material is property of Tektite Manufacturing Inc and is not to be used by the recipient for any purpose other than the purpose for which it was transmitted. The material remains the property of Tektite and shall be returned upon request. The material may not be reproduced or disclosed to third parties without the written consent of Tektite.

Tolerances:  
Unless otherwise specified  
X.X = ±1/16"  
Angular = ± 1.0°

Tektite Manufacturing Inc. 427 Buffalo Str, Box 639, Winkler MB, R6W 4A8, Canada			
Req'd: 1 req	CNC:	Description: Cab Accessories Assembly	
Drawn By: Daryl Furkalo	Date: 2023-03-15	Units: Imp.	File Name: YAN425-ASM-15_OP
Checked By:	Date:	Size: B	

Index	Service Part #	File Name	Description	Qty
1	A00-0024	BUSS-15600-08-11	Power Block/Ground	1
2	A00-0065	TEKT-ASM-005	On-Off Switch w/Lens	8
3	A00-0180	BOLT_10-32X1	Fuse Block Bolts	2
4	A00-0181	HEX-NUT-10-32	Fuse Block Nuts	2
5	A00-0218	TEKT-0218	10-24 Panel Nut	4
6	A00-0354	SCREW-10-24X3-4	Screw, 10-24 x 3/4",MB	6
7	A00-0418	TEKT-0010	Fuse Block Retainer Bracket	1
8	A00-0494	TEKT-0221	10-24 Panel Nut, Thick	2
9	A00-0531	TEKT-ASM-086	2023 Fuse Cover, Magnet Assembly	1
10	A00-0539	TEKT-0248	Switch Plate, V5 ST	1
11	n/a	TEKT-0247	Switchplate Mount V7	1



#### Notice of Confidentiality

This material is property of Tektite Manufacturing Inc and is not to be used by the recipient for any purpose other than the purpose for which it was transmitted. The material remains the property of Tektite and shall be returned upon request. The material may not be reproduced or disclosed to third parties without the written consent of Tektite.

Tolerances:  
Unless otherwise specified  
X.X =  $\pm 1/16"$   
Angular =  $\pm 1.0^\circ$

Tektite Manufacturing Inc. 427 Buffalo Str, Box 639, Winkler MB, R6W 4A8, Canada				
Req'd: <b>1 req</b>	CNC:	Description: <b>2023 Steel Top Fuse Block Assembly</b>		
Drawn By: <i>Daryl Furkalo</i>	Date: <b>2023-06-02</b>	Units: <b>Imp.</b>	File Name: <b>TEKT-ASM-088_OP</b>	
Checked By:	Date:	Size: <b>B</b>		