



## Mahindra 1626 ROPS Cab



Please note: Cab is shown with optional accessories.

### **Mahindra 1626 ROPS Cab**

**This ROPS cab is designed and built to fit the Mahindra 1626 tractor.**

**Designed and Built by:**

**Tektite Manufacturing Inc:**

**427 Buffalo Street**

**P.O. Box 639**

**Winkler, MB**

**R6W 4A8**

**Canada**

**PH: 204-331-3463**

**Fax: 204-331-4159**

**@tektite.ca**

**www.tektite.ca**

**One year standard product warranty provided by Tektite.**



**DO NOT PROCEED FURTHER UNTIL YOU HAVE READ THE INFORMATION BELOW**

- 1) Always wear personal protective equipment**
- 2) A minimum of two people is necessary to safely install the cab**
- 3) This ROPS cab is heavy. A lift assist device such as an overhead hoist or high lift forklift is required.**
- 4) Ensure your work area is well ventilated. The installation requires the starting of the tractor which will produce dangerous carbon monoxide fumes.**
- 5) Read through the entire installation manual first.**
- 6) Follow the installation instructions in order.**
- 7) Reading the operators manual prior to using the ROPS cab.**



Tektite's ROPS products are designed to provide safe and dependable service during operation when they are properly maintained according to the instructions. Please read this installation manual carefully before installing and using this ROPS product.

The photos/illustrations provided in this manual may not provide all the detail needed, and are for reference only.

All directions provided are from the reference point of the tractor seat facing the steering wheel. All left and right references are from this view point.

For reference, please fill in the information below. This will assist your dealer in providing service for this ROPS. It is advisable that this information be provided to your insurance company as well in the event that the tractor is lost or damaged.

Vehicle Model: \_\_\_\_\_

ROPS Serial Number: \_\_\_\_\_

Date of Purchase: \_\_\_\_\_

Dealer Name: \_\_\_\_\_

## Parts List Standard Cab:

| Description                           | Qty   |
|---------------------------------------|-------|
| Bolt, Hex, M8 x 16, YD                | 4     |
| Connector, Butt                       | 8     |
| Wire Wrap, 1" Long                    | 8     |
| Wire Harness Extension, Hazard Lights | 1 set |
| Wire Loom, 18" Long, Small            | 2     |
| Left Under-seat Shield                | 1     |
| Right Under-seat Shield               | 1     |
| Front Mounting Brackets               | L&R   |
| Rear Mounting Brackets                | L&R   |
| Bolt, Hex, 5/8" x 3", Gr. 8, YD       | 4     |
| Washer, Flat, 1/4" thick              | 4     |
| Nut, Flange, 5/8", Gr. 8, YD          | 4     |
| Bolt, Hex, 1/2" x 4 1/2", Gr. 8       | 2     |
| Rear Mount Cover, Floormat            | L&R   |
| Bolt, Flange, 5/16" x 1", YD          | 4     |
| Nut, Flange, 5/16", YD                | 4     |
| Wire Loop, 1/4"                       | 2     |

## Parts List Heater Only Kit:

| Description            | Qty |
|------------------------|-----|
| Heater Bypass Assembly | 1   |

## Parts List Heater/Air Conditioner Kit:

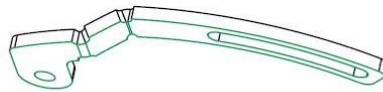
| Description                                 | Qty   |
|---|-------|
| Hose Clamps, HS-6                           | 2     |
| Zip Ties                                    | 6     |
| Nut, Flange, 3/8", YD                       | 4     |
| Bolt, Hex, 3/8" x 4", YD                    | 1     |
| Bolt, Flange, 3/8" x 1 1/2", YD             | 2     |
| Bolt, Flange, M8 x 70, YD                   | 1     |
| Compressor, REAR Port, Sanded Ears One Side | 1     |
| Bolt, Hex, 3/8" x 3", YD                    | 1     |
| Alternator Harness Extension Kit            | 1 set |
| Wire Wrap, 1" Long                          | 6     |
| Heater Bypass Assembly                      | 1     |

|                                    |       |
|------------------------------------|-------|
| Alternator Extension Harness Wires | 1 set |
| Connector, Bullet, Male            | 1     |
| V-Belt, A33, Alternator            | 1     |
| V-Belt, AX42, Main Drive           | 1     |
| Compressor Tensioner Bracket       | 1     |
| Alternator Bracket Weldment        | 1     |
| Compressor Bracket Weldment        | 1     |

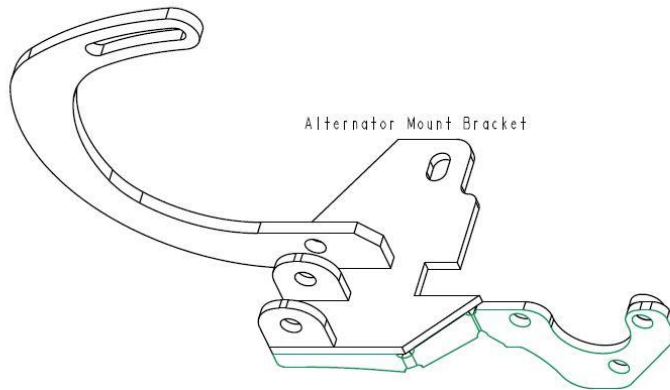


Compressor  
Mounting  
Bracket

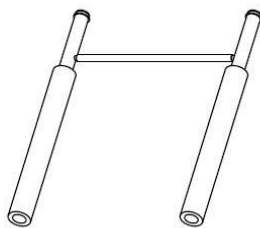
Heater/Air Conditioner Parts ONLY



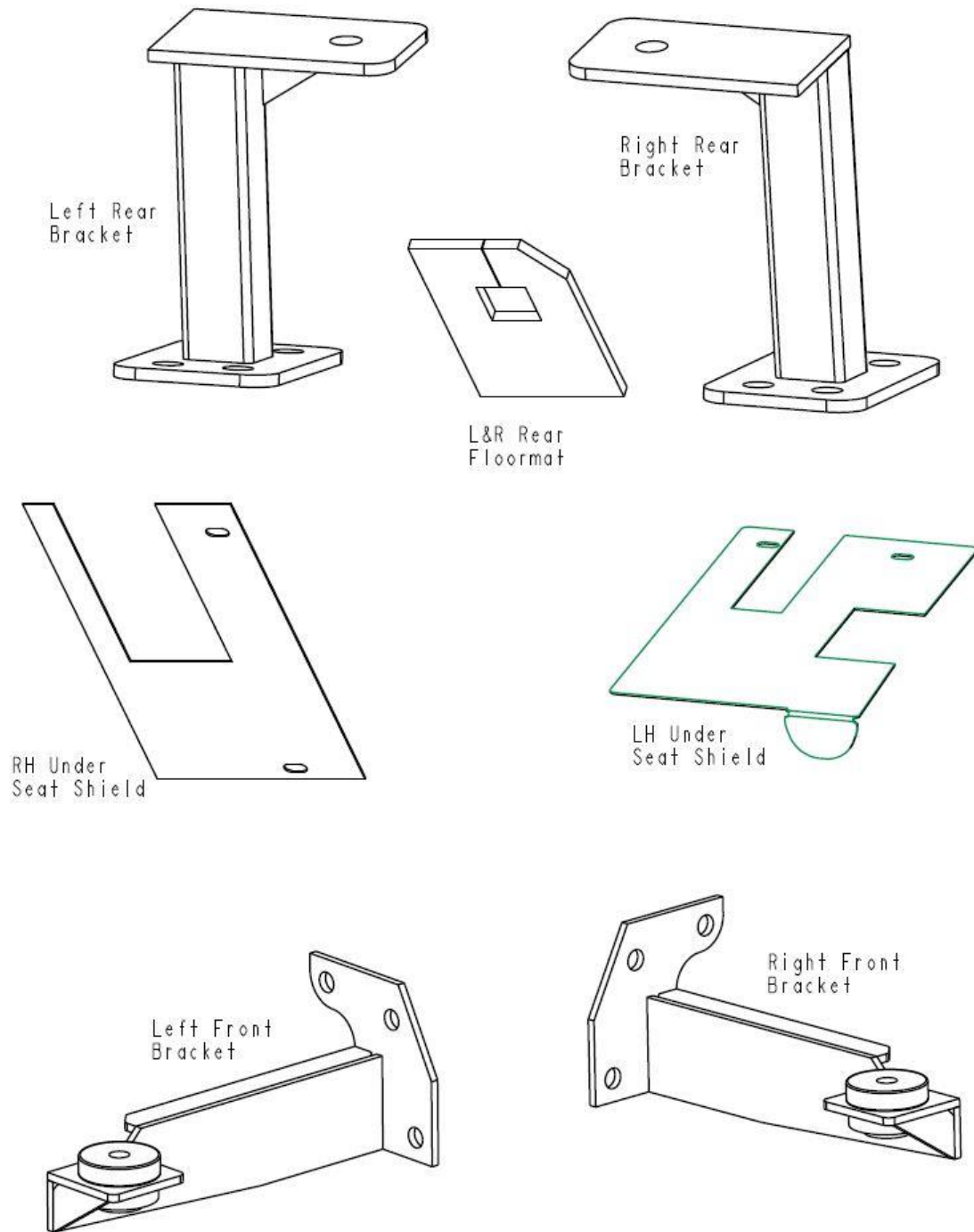
Compressor  
Tensioner  
Bracket



Alternator Mount Bracket



Heater Bypass  
Assembly



**Standard Cab Installation Instructions:**

Park the tractor in a well-ventilated area. Lower front-end loader and remove quick-attach arms to make installation easier. Disconnect the battery.

**The hydraulics control lever will need to be bent to provide clearance to the cab.**

- . Remove the 4-way flasher brackets from the 2-post ROPS, disconnecting wiring harnesses going to each light.
- . Un-bolt the 2-post ROPS from the tractor and lift and remove. Save fasteners to be re-used later.
- . Take the left rear bracket and slide into opening where the 2-post ROPS was located on the left rear side of the tractor. Fasten into place with the factory hardware. Note orientation of the left rear bracket.

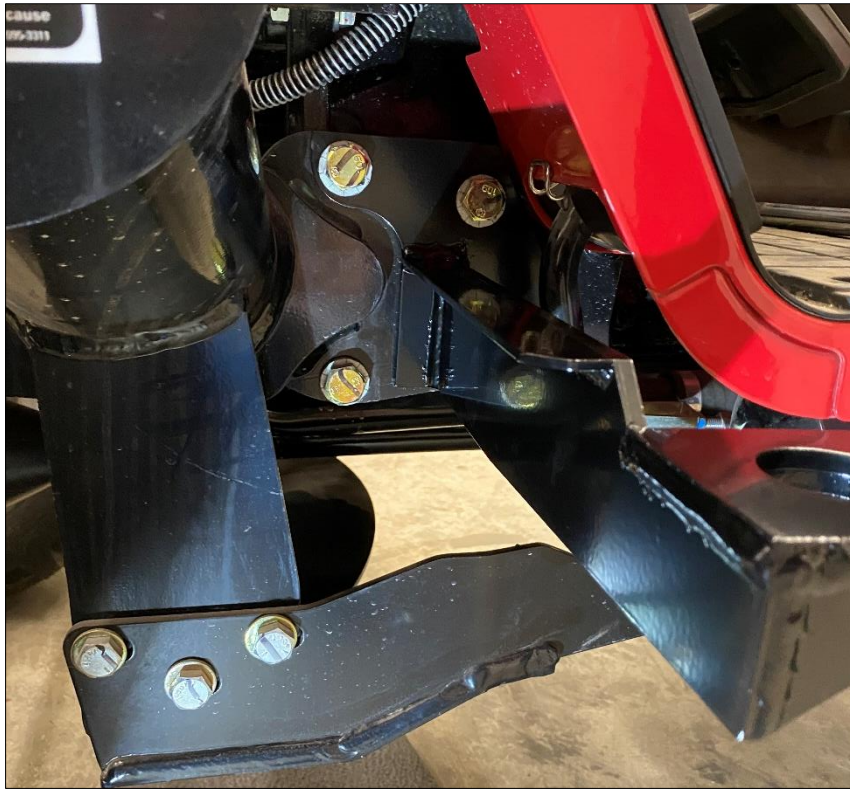




. Take the right rear bracket and slide into opening where the 2-post ROPS was located on the right rear side of the tractor. Fasten into place with the factory hardware. Note orientation of the right rear bracket.



. Remove the three bolts, top two and one rear, on the left loader sub-frame attachment point to the tractor. Position the left front bracket onto the outside of the bracket and then loosely fasten into place with the factory hardware.



. Remove the three bolts, top two and one rear, on the right loader sub-frame attachment point to the tractor. Position the right front bracket onto the outside of the bracket and then loosely fasten into place with the factory hardware.



. Position the left floormat around the left rear bracket, on top of the fender.





. Position the right floormat around the right rear bracket, on top of the fender.

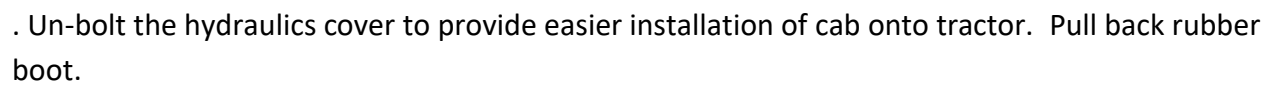


. Take the left under-seat shield and position onto seat platform. Use two M8 x 16 hex bolts to fasten shield into place.



. Take the right under seat shield and position onto seat platform. Use two M8 x 16 hex bolts to fasten shield into place. Ensure the bristles cover the opening as best as possible.







. Return to the cab to install lift brackets next. To remove the gas shock on the left cab door, slide a flat screwdriver underneath the small clip on the end cap that must be pulled UP order to pop the shock off the ball stud. **The shock will release very easily when this is accomplished.** Lift the door assembly straight up and off the cab and put aside for now. Remove right door as well.



- . Take one of the  $\frac{1}{2}$ " x 4  $\frac{1}{2}$ " hex bolts and fasten to the weld nut located at the top of the door opening on the left side of the cab. Use the other bolt for the right door weld nut tab.
- . Using a lift strap or chain, route the chain/strap from the left lift bolt over the roof top AC to the right lift bolt. Connect to an over-head hoist and prepare to lift cab off shipping pallet.
- . Un-bolt the cab from the shipping bracket and lift cab off the pallet.
- . Position cab directly over the tractor, and slowly lower down. Use caution so that cab does not hit the hydraulics on the right side. Continue lowering down until cab is on top isolators at the front, and the isolator contacts the rear bracket.
- . Get ALL four isolator bolts started. For the rear, the structural washer goes on top of the mount plate. For the front, it does underneath the front bracket. Use provided 5/8" x 3" hex bolts, flange nuts, and structural washer at each location.
- . Once all fasteners are started, you can remove all pressure from the overhead hoist, and carefully remove the lift straps/chains.
- . For the isolators, you can apply 240 ft-lbs of torque. Tighten the rear brackets to ?? ft-lbs. Tighten the front brackets bolts to ?? ft-lbs.
- . Remove the joystick lever. Put lever in bench vise, and then carefully bend lever over. Lever MUST be bent far enough to allow for full range of motion when cab door is closed. Bend far enough. Re-install lever control.



. Take the plastic shroud, make 1" at bottom, and 3" along vertical side. Cut out plastic to provide clearance for the rubber seal.



. Re-install the plastic shroud that covers the hydraulic control lever.



- . Take the short wide bristle and position onto the right shield underneath the joystick. Mark the holes on bristle, and drill out  $\frac{1}{4}$ " holes.
- . Slide bristle onto the shield and retain with fir tree fasteners.



- . Un-bolt the left step on the tractor.
- . Take provided  $\frac{5}{16}$ " x 1" flange bolts and nuts and attach step to the cab through the welded on mounts under the left door opening.





- . Repeat for the right side step.

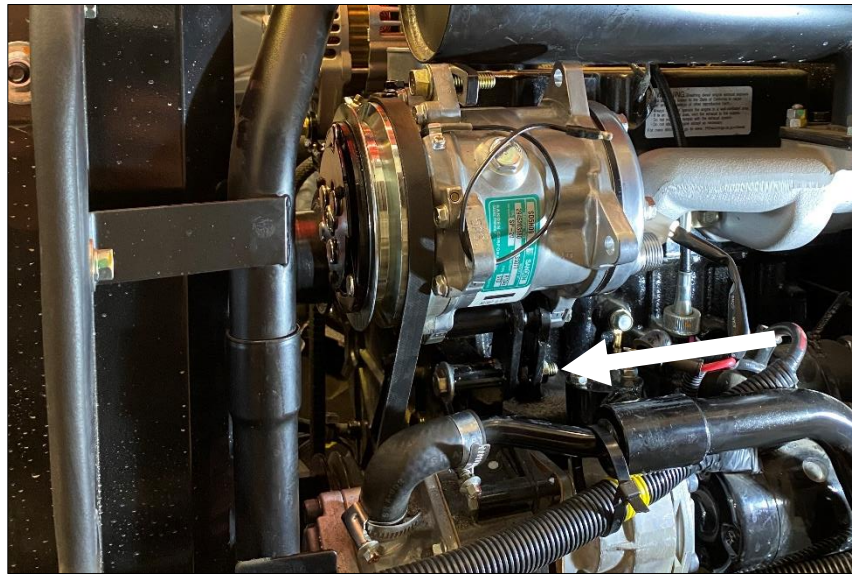
**For cabs equipped with heater/AC option, proceed with the following steps now.**

- . Un-bolt and remove the alternator tensioner bracket to relieve belt tension. Slip belt off alternator.
- . Disconnect the wire harness going into the back of the alternator. It will need to be extended with the wire harness extension kit provided.
- . Extend the green/white wire with the provided green wire. Cut wire and solder in extension, use shrink tube connectors provided to cover solder joints.
- . Extend the red/white wire with the provided white wire. Cut the wire and solder in extension, use shrink tube connectors provided to cover solder joints.
- . Extend the red wire with the provided red wire. Cut the wire and solder in extension, use shrink tube connectors provided to cover solder joints.
- . Un-bolt the alternator and remove from tractor for now.

- . Drain the engine coolant.
- . Take the compressor mount bracket and slide between the ears of the compressor as shown below. Use provided 3/8" x 4" hex bolt and flange nut. **Note location of removed ears with respect to the bracket location.**

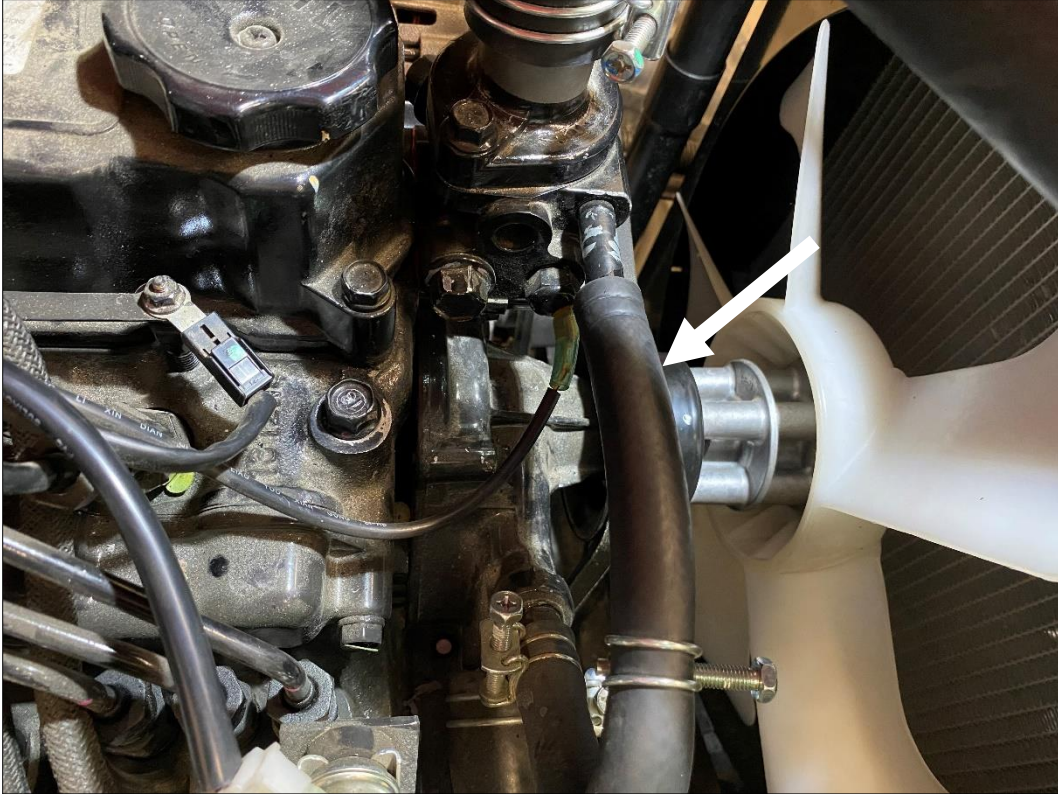


- . Place compressor mount bracket at rear of alternator mount location, and bolt into place with the provided 3/8" x 3" hex bolt and flange nut, starting the bolt from the rear.

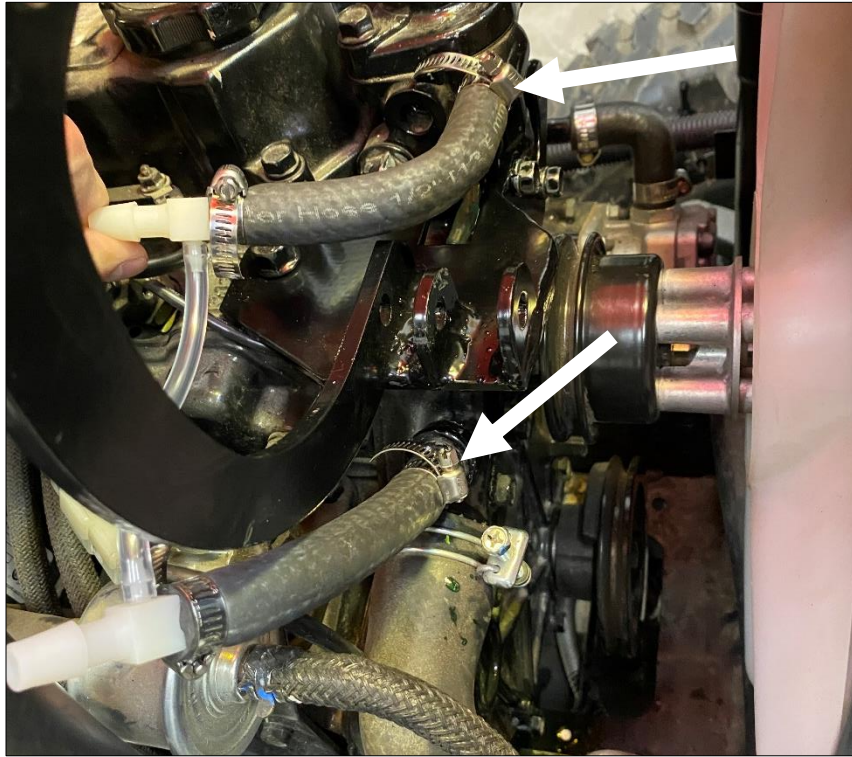


- . Remove the upper radiator hose for now.
- . Remove the engine bypass hose.



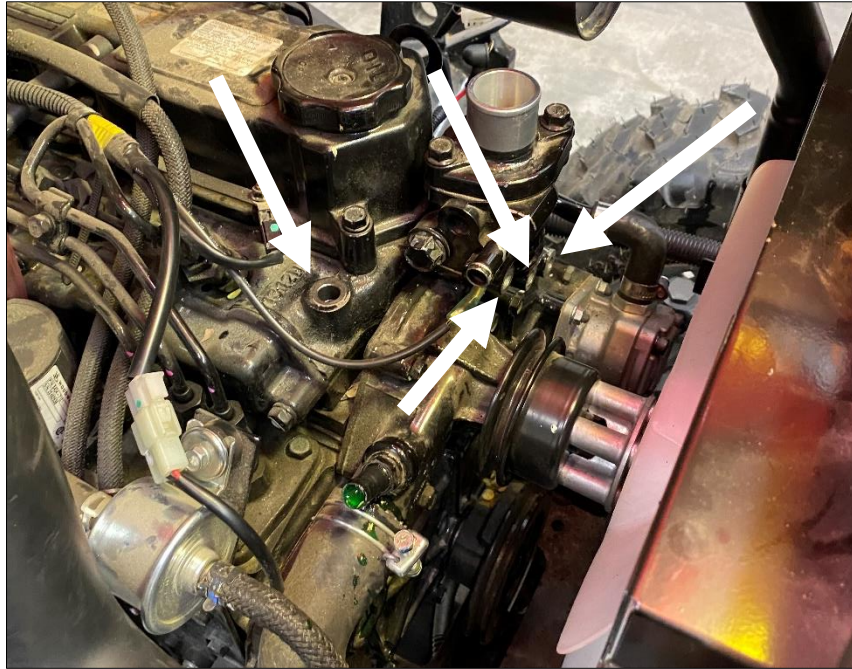


. Take the heater bypass assembly and install into both ports where the bypass was located.

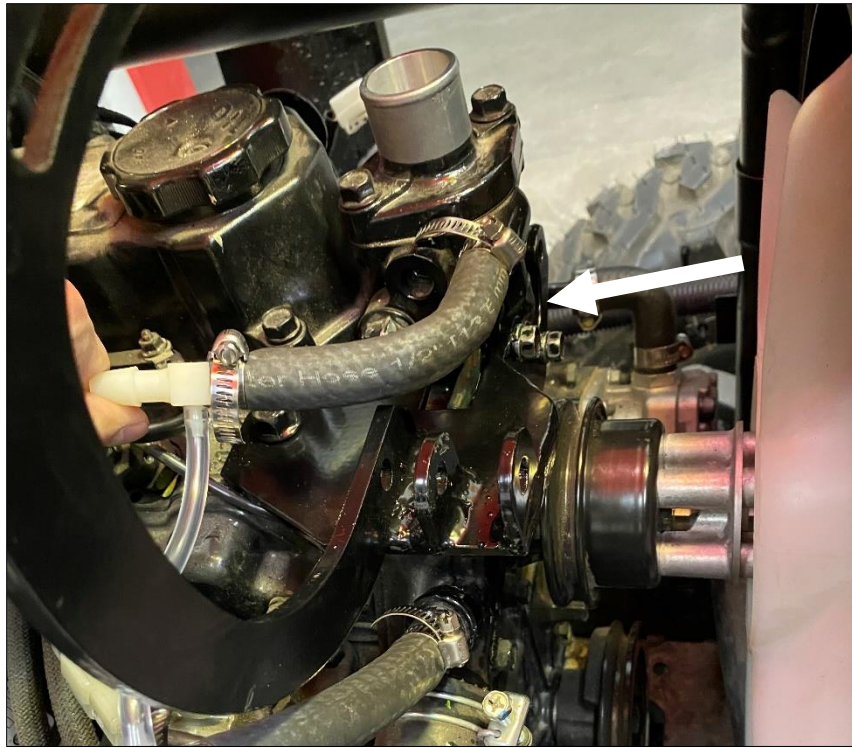


. Remove the three fasteners at the front of the thermostat housing along with the top fastener on the right side (driver perspective).

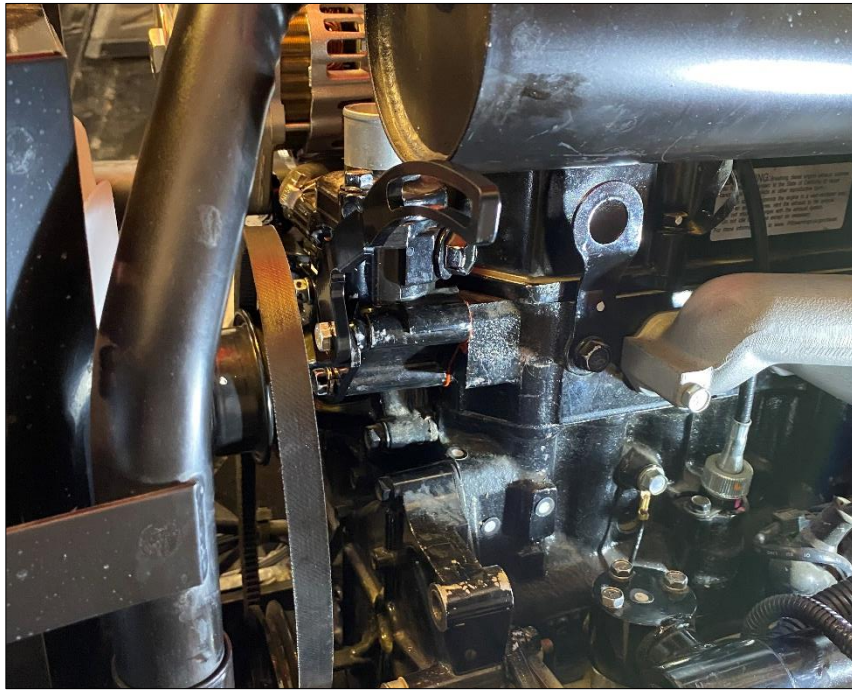




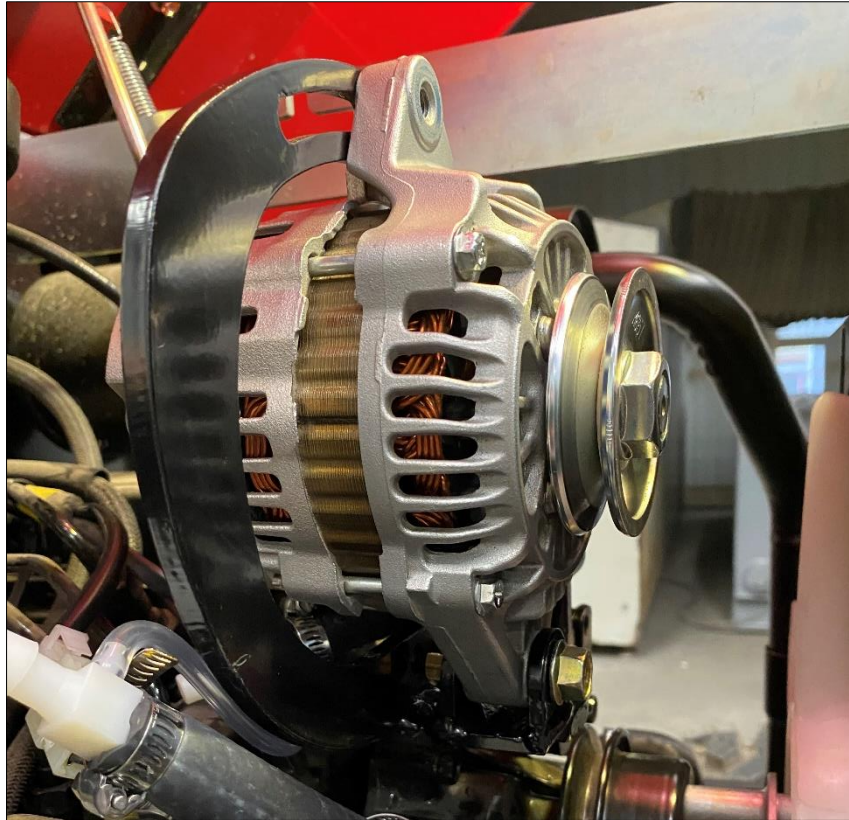
. Place the alternator mount bracket into place and fasten with three of the original four bolts (not tensioner bracket bolt).



. Take the compressor tensioner bracket provided and loosely fasten into place in factory location with provided M8 x 70 bolt. Tighten the remaining bracket fasteners, but the tensioner bolt just yet.

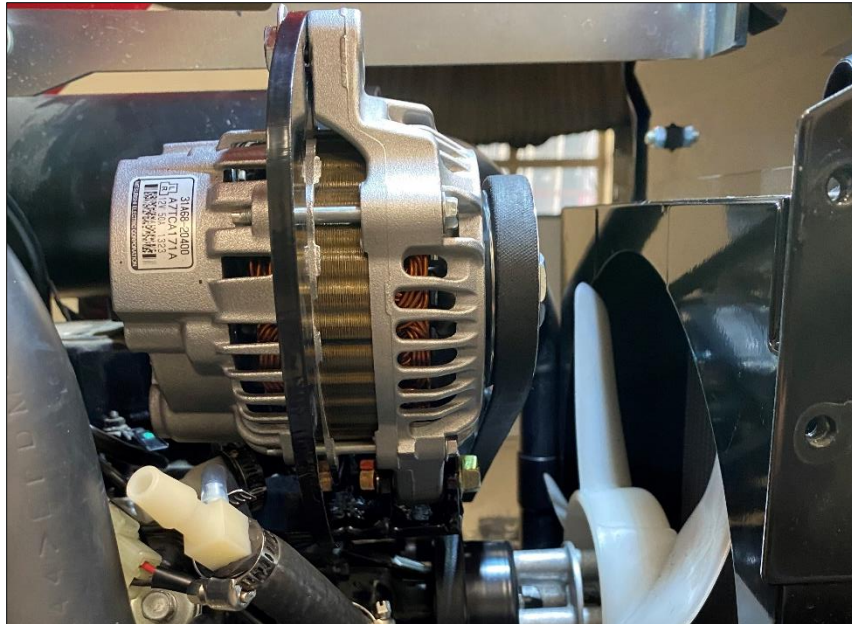


. Take the alternator and fasten to the mounting bracket at the bottom with the provided 3/8" x 2" flange bolt.



- . Remove the main drive belt from the tractor.
- . Use the provided AX42 V-belt and slip onto main drive pulley, fan pulley, and rear compressor pulley.
- . Tighten the compressor bracket, then apply tension and tighten the tensioner bracket on the compressor.
- . Slip the A33 V-belt onto the compressor and to the alternator.
- . Use the factory hardware and fasten the alternator to the tension arm on the bracket. Apply tension to the alternator and then fully tighten the bracket.





- . Re-connect the alternator harness with extended harness.
- . Re-install the upper radiator hose.
- . Route the heater hoses along the right side of the tractor from the rear of the cab to the engine bay. Use provided zip ties to fasten to tractor, keeping away from moving parts and hot components on the tractor.



- . Route hoses to the heater bypass installed earlier. Cut hose and connect both ends to the heater bypass with the provided hose clamps.
- . Route the AC hoses, AC power harness, and clutch wire from the rear of the cab, underneath the tractor to the left side of the engine bay. Use provided zip ties to secure to tractor, away from hot and moving components.



- . Install the large #10 hose onto the compressor. Ensure it is pointing down and away from the muffler.
- . Install the #8 hose onto the compressor, ensure it is pointing down and away from the exhaust.
- . Connect the compressor clutch wire (white) to the compressor with the bullet connector provided.





- . Connect the main red power wire of the AC harness to the positive terminal on the battery. Connect the black wire of the AC harness to the negative terminal on the battery.
- . Take the cab power harness located at the bottom of the A-Post and route towards the battery. Connect red wire to the positive terminal of the battery. Connect the black ground wire to the negative terminal on the battery.
- . Re-fill the engine antifreeze, leave radiator cap off.
- . Start tractor and turn on the heater switch in the heater/AC console. Turn temperature control to maximum heat.
- . Run the engine at high engine RPM for a while in order to increase the temperature of the engine coolant and force the thermostat to open. This will bleed air out of the coolant system. Continue topping up coolant system to purge air from system. Once fully bled, HOT air will be blowing out of the heater vents.
- . Take the left taillight assembly and bolt to the rear left cab mount plate. Use factory hardware.





. Take the right taillight assembly and bolt to the rear right cab mount plate. Use factory hardware.

. Taillight harness for each light needs to be extended. Use provided green and black wires. Cut and solder the extension wires into place. Use the provided wire wrap at both ends of the wires. Once complete, install the wires into the loom provided, tape ends of loom to wire. Reconnect the wire to the taillight.



. To ensure a better seal of all weather stripping and floor mat pieces, it is recommended that you use a black silicone seal to seal the cab parts to the tractor.

. Cab AC can now be filled. A licensed air conditioning installer **MUST** perform this operation. The compressor is normally pre-filled with oil, however, if any is lost, it should have 3.5 fluid oz of SP15. During AC charging, 1.5 lbs of R134a refrigerant is needed.



## Mahindra 1626 ROPS Cab



Please note: Cab is shown with optional accessories.

### **Mahindra 1626 ROPS Cab**

**This ROPS cab is designed and built to fit the Mahindra 1626 tractor.**

**Designed and Built by:**

**Tektite Manufacturing Inc:**

**427 Buffalo Street**

**P.O. Box 639**

**Winkler, MB**

**R6W 4A8**

**Canada**

**PH: 204-331-3463**

**Fax: 204-331-4159**

**bhunt@tektite.ca**

**www.tektite.ca**

**One year standard product warranty provided by Tektite.**

Tektite Manufacturing Incorporated thanks you for purchasing a Mahindra 1626 ROPS cab! Tektite has worked very hard to design and build this ROPS product and we hope that it provides you with many years of ROPS protection.

Tektite's ROPS products are designed to provide safe and dependable service during operation when they are properly maintained according to the instructions. Please read this operator manual carefully before using this ROPS product.

The photos/illustrations provided in this manual may not provide all the detail needed and are for reference only.

All directions provided are from the reference point of the tractor seat facing the steering wheel. All left and right references are from this view point.

For reference, please fill in the information below. This will assist your dealer in providing service for this ROPS. It is advisable that this information be provided to your insurance company as well in the event that the tractor is lost or damaged.

Vehicle Model: \_\_\_\_\_

ROPS Serial Number: \_\_\_\_\_

Date of Purchase: \_\_\_\_\_

Dealer Name: \_\_\_\_\_



### Limited Warranty

Tektite Manufacturing Inc. (Tektite) warrants to the original purchaser (the "Claimant"), that Tektite products will be free from defective materials or workmanship, under normal use and service, for a period of (1) full year (or 1500 hours, whichever is less) from the original invoice date. Tektite's liability under this Limited Warranty is limited to the repair or (at the discretion of Tektite) the replacement of those components of its products, which were manufactured by Tektite that are defective in materials or workmanship. Tektite shall have no liability under this Limited Warranty unless Tektite is notified of the defect during the stated Warranty Period.

All returns require a Returned Material Authorization Number (RMA#). Warranty claims must be submitted to Tektite at 1-204-331-3463 prior to written authorization. All warranty work not pre-authorized by Tektite will not be covered by this warranty agreement. Claimant must arrange shipping of the returned and repaired or replaced product or component from Tektite plant in Winkler, Manitoba at the Claimant's own risk and expense. Tektite must receive all returns within (30) days of issuance of a RMA#. Limitations and Exclusions: Tektite has no responsibility to a Claimant under this Limited Warranty or on any other basis for any of the following:

- a) defects caused, in whole or in part, by accident or misuse, negligence or failure to maintain the product or component;
- b) products or components sold to a customer on an "as is" basis;
- c) wiper blades, light bulbs, fuses, clear vinyl or other consumables;
- d) glass where the point of failure has not been preserved intact and delivered to Tektite for analysis of the cause of the failure;
- e) products or components which have been modified after shipping from Tektite to its customer;
- f) transportation charges for returned, repaired or replacement items;
- g) defects that are subject of a Tektite initiated recall where the Claimant fails to comply with the terms of the recall notice that comes to the attention of the Claimant;
- h) components of Tektite products that are manufactured by third parties (Tektite's only obligation in relation to such components shall be to accord to the Claimant the benefit of any transferable warranty accorded to Tektite by third party manufacturer);
- i) defects in workmanship or materials in products or components that are repaired or replaced by Tektite unless Tektite is notified of the new defect within the Warranty Period that applied to the original product or component that has been repaired or replaced;
- j) defects that result, in whole or in part, from inadequate engineering or specifications provided to Tektite by its customer;
- k) any actual or alleged deficiency in technical or engineering services or advice provided by Tektite to its customer whether provided for valuable consideration or otherwise;
- l) consequential damages, or any other damages whether foreseeable or not, resulting from the defect or any delay in remedying the defect; and
- m) any breach or alleged breach of any implied warranty of merchantability or fitness for particular purpose of use;
- n) defects or part failure due to misuse or failure to follow recommended cab installation procedures;
- o) travel expenses, including mileage.

This Limited Warranty expresses the entire obligation of Tektite, its officers, directors, agents and employees, to its customer or any Claimant in respect of any defect in workmanship, or materials of any product or component sold or manufactured by Tektite whether on grounds of breach of contract, negligence or other tortious liability, breach of express or implied warranty or other basis in law of any jurisdiction.

Acceptance by a customer of delivery of products of Tektite constitutes acceptance of this Limited Warranty in lieu of all other warranties express or implied including without limitation all implied warranties of merchantability or fitness for particular purpose or use and constitutes acceptance by customer of the exclusions and limitations of the liability of Tektite set out above. Once received, the cab should have ALL exterior cardboard, Styrofoam wrapping removed for immediate inspection of product to ensure that no damages have occurred during transportation. Outer coverings should stay off the cab and the cab be stored indoors in a controlled environment.

**\*Labor rate fixed at a maximum of \$75.00 per hour (U.S.) and \$75.00 per hour (CDN) based on Tektite determination of applicable hours. All payments to customer will be in the form of credits applied to their account, no exceptions.**

## Safety Precautions

### *Safety First*

Read these instructions carefully. It is essential that you read the instructions and safety regulations before you attempt to assemble or use the features that are on this cab/ROPS.

**Danger:** Indicates an immediate hazardous situation which, if not avoided, will result in death or serious injury.

**Warning:** Indicates a potentially hazardous situation which, if not avoided, may result in death or serious injury.

**Caution:** Indicates a potentially hazardous situation which, if not avoided, may result in minor or moderate injury.

**Important:** Indicates that cab or property damage may result if instructions are not carefully followed.

**NOTE:** All products are designed to give safe, dependable service if they are operated and maintained according to instructions. It is the owner's responsibility to be certain anyone operating this product reads this manual, and all other applicable manuals, to become familiar with this cab and all safety precautions. Failure to do so could result in serious personal injury or cab damage. If you have any questions, consult your dealer. Read and understand this manual before operation.

**NOTE:** A safe operator is the best assurance against accidents. All operators, no matter how experienced they may be, should read this operator manual and all other related manuals before attempting to operate features in this cab/ROPS and operate the base tractor. Please read the following section and pay particular attention to all safety recommendations contained in this manual and those labelled on the cab and on the tractor.

## General Safety

1. Never let an unqualified or untrained driver operate the tractor.
2. Keep a fire extinguisher, with ABC rating securely fastened in the ROPS. Maintain it and be familiar with its use.
3. Do not carry passengers.
4. Never operate the tractor in a closed building for a prolonged period. Ensure adequate ventilation is present, as engine exhaust fumes are poisonous and can kill.
5. Always keep sleeves, jackets or other loose clothing relatively tight and belted. Loose clothing may catch on moving parts and result in severe personal injury or death.
6. Provide a first-aid kit, securely attached inside of the ROPS for use in case of accident.
7. Never jump from the tractor. There is a danger of tripping or falling on protruding parts.
8. Use steps and hand holds when mounting and dismounting the tractor, or for servicing components too high to reach from the ground.
9. When seated in the ROPS, fasten seat belt before starting the engine. A proper seat belt must be worn at all times when using a ROPS.
10. Safety devices and shields are intended to protect operators from injury or death. Under no circumstances should they be modified, disabled or removed.

## Operating Safety

1. Always operate the tractor controls while sitting in the operator's seat.
2. Lock seat in position and buckle seat belt before operating the tractor.
3. Avoid abrupt sharp turns at high speeds.
4. On sloped terrain, do not make sharp turns as machine stability could be compromised.
5. Operate the tractor smoothly, avoid abrupt starts and stops.
6. Keep all shields in place when operating the tractor.
7. Do not operate the tractor when you are tired, sick, or impaired.
8. Never operate the tractor in confined areas; visibility next to the tractor is reduced. Injury to bystanders or damage to the ROPS or equipment may result.

## Safety

Carefully review the procedures given in this manual and the tractor operator's manual with all operators annually. It is important that all operators become familiar with and follow safety precautions. Operating instructions must be given to everyone using the tractor before operation and at least once yearly thereafter in compliance with OSHA Regulations 1928.57 (United States).

### **Safe Operation on Rough Terrain**

1. Drive the tractor slowly on hillsides and curves to eliminate the danger of tipping. Avoid slopes which are too steep for safe operation. Avoid sharp uphill turns.
2. Always drive slowly enough over rough ground or obstructions. Drive at speeds slow enough to ensure your safety.
3. When driving out of a ditch, gully, or up a steep hillside, engage the clutch slowly. Avoid sharp uphill turns.
4. When descending steep grades, select a sufficiently low gear to maintain control with minimum use of braking.
5. Use caution when driving near the edge of a ditch or gully. It may cave in, causing the tractor to roll over.
6. Be alert when operating near trees, slopes and around obstructions. Tree branches can cause damage to ROPS components.

### **Maintenance Safety**

1. Remove mud, crop residue, chains, and tools from steps and operator's platform. They may interfere with pedal operation or entry/exit from tractor.
2. When servicing components are too high to reach from the ground use steps and handholds. Do not use fenders or shields that are not designed as steps.

### **Safe Highway Operation**

1. Before operating the tractor on, or near, public roadways check with your local authorities for any local regulations that will affect you.
2. Equip towed implements with slow moving vehicle (SMV) signs when traveling on public roads.
3. Install additional lights on implement rear to safeguard against rear end collisions.
4. Use hazard warning flashers as required by law when transporting or driving on public roads. If the tractor had warning flashers removed when mounting the ROPS, they must be replaced prior to operation on public roads.
5. Keep to the right, yielding right-of-way traffic, especially if pulling implements. Pull off the road and stop to allow motorists to pass. Drive on the road shoulder, if permitted by law.
6. Use extreme caution when pulling heavy loads at road speeds. Avoid hard application of the tractor brakes at high speed.
7. Always drive slowly near curbs, approaches or ditches.
8. If equipped, ensure headlights are aligned so they will not blind the operators of oncoming vehicles. If the tractor is not equipped with turn signals and law requires them, install them prior to operating on or near public roads.



9. Use your turn signals, checking for traffic well in advance of turning. If the tractor is not equipped with turn signals and law requires them, install them prior to operating on or near public roads.

### **Safety Decals**

1. Keep decals clean. Remove dirt with a wet clean cloth when necessary.
2. Replace safety decals if destroyed, missing, painted over or unreadable. If any safety decals are covered or obscured when the ROPS is mounted, it is recommended that you purchase replacement decals from the tractor manufacturer. Mount them in a readable location at, or near, their original location before operating the tractor.
3. New ROPS decals and tractor decals are available from your tractor dealer.

### **ROPS Safety**

1. Install the ROPS in accordance with Tektite mounting instructions. Failure to do so may affect the ROPS ability to withstand a roll over.
2. If the ROPS is subjected to alteration, structural damage or involved in an over turn accident, the entire structure must be replaced. Failure to do so may result in injury or death in the event of a roll over.
3. If the tractor is not equipped with seat belts, purchase approved seat belts from the tractor manufacturer or Tektite prior to operating the tractor.
4. Always fasten seat belts prior to operating the tractor.
5. Always operate the tractor from the operator's seat.
6. Remove mud, crop residue, chains and tools from steps and operator's platform. They may interfere with pedal operation or entry/exit from the tractor.
7. Remove all loose chains, tools, and equipment from the operator's platform. Failure to do so may cause injury or death in the event of a roll over.
8. Do not install the ROPS on a tractor model that the ROPS is not designated for (compatible tractor designations are printed on the ROPS serial number plate). The ROPS is designed specifically for individual models to ensure ROPS requirements will be met. Installing the ROPS on a non designated tractor may result in injury or death.

### **Emergency Exits**

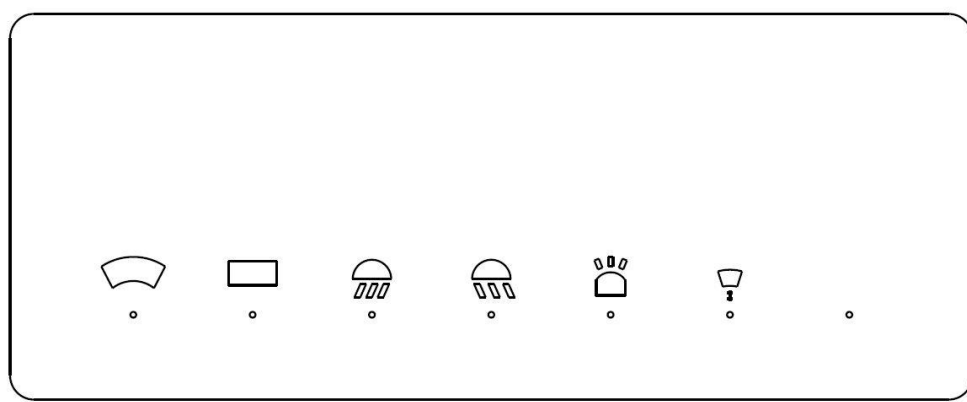
The ROPS cab has two doors, either one can be used during an emergency.

## Operating Instructions

### Important

The following section locates, identifies and briefly describes the functions of all cab controls. All operators should familiarize themselves with control location and function prior to operating the tractor. Failure to do so may result in unsafe operation of the tractor and possible injury or death to operators and bystanders.

There is one switch plate located in the cab. The following switches are available and their functionality is described.



### Cab Switch Plate

#### 1. Front Wiper Rocker Switch (standard)

Low position: Off

High position: On

Note: indicator light activates when wiper is on.

#### 2. Rear Wiper Rocker Switch (not available on all models)

Low position: Off

High position: On

Note: indicator light activates when wiper is on.

#### 3. Front Work Light Rocker Switch (standard)

Low position: Off

High position: On

Note: indicator light activates when work lights are on.

#### 4. Rear Work Light Rocker Switch (optional)

Low position: Off

High position: On

Note: indicator light activates when work light is on.

#### **5. Washer Momentary Switch (Front and Rear optional)**

Low position: On

Mid position: Off

High Position: On

#### **6. Beacon Rocker Switch (optional)**

Low position: Off

High position: On

Note: indicator light activates when work lights are on.

#### **7. Water Heater Fan Rocker Switch (optional)**

Low position: Off

High position: On

Note: indicator light activates when work lights are on.

Standard and optional features are individually fused, and the fuses can be accessed behind the plug in the middle of the switch-plate.

### **Cab Circuit Protection**

The Tektite ROPS cab is wired to provide maximum protection against individual circuit overload. All optional components are fused internally behind the cab switch plate.

### **After your ROPS Cab has been installed:**

Before starting a tractor equipped with a Tektite ROPS cab:

1. Clear the operator platform of all tools. Tools left in or around the ROPS and tractor can cause operator interference which could lead to bodily injury and/or damage the machine.
2. Inspect the ROPS and tractor to ensure all bolts are tight and re-tighten if required.
3. Ensure that all pedals, levers, and controls have adequate clearance for normal operation.
4. Ensure that all electrical components of both the ROPS and tractor operate normally.
5. Ensure your door latches properly onto the striker pin. Immediately after installation, the ROPS frame may flex slightly from installation, and the door latch will need to be re-aligned for proper operation. Loosen the striker pin, striker mounting plate and door latch as necessary to get a proper alignment of the door striker.

**Service Parts Breakdowns:**

Following are parts breakdowns for components that may require service parts replacement during the life of the ROPS. If you require replacement parts, please contact the dealer that you purchased the ROPS from and indicate which parts you require.