



## John Deere 3E ROPS Cab MY2019



### John Deere 3E MY19 ROPS cab

This ROPS cab is designed and built to fit the John Deere 3025E, 3032E and 3038E MY2019 and newer ONLY.

Designed and Built by:

Tektite Manufacturing Inc:

427 Buffalo Street

P.O. Box 639

Winkler, MB

R6W 4A8

Canada

PH: 204-331-3463

Fax: 204-331-4159

[sales@tektite.ca](mailto:sales@tektite.ca)

[www.tektite.ca](http://www.tektite.ca)

One year standard product warranty provided by Tektite.



**DO NOT PROCEED FURTHER UNTIL YOU HAVE READ THE INFORMATION BELOW**

- 1) Always wear personal protective equipment**
- 2) A minimum of two people is necessary to safely install the cab**
- 3) This ROPS cab is heavy. A lift assist device such as an overhead hoist or high lift forklift is required.**
- 4) Ensure your work area is well ventilated. The installation requires the starting of the tractor which will produce dangerous carbon monoxide fumes.**
- 5) Read through the entire installation manual first.**
- 6) Follow the installation instructions in order.**
- 7) Reading the operators manual prior to using the ROPS cab.**





Tektite Manufacturing Incorporated thanks you for purchasing a John Deere 3032E ROPS cab! Tektite has worked very hard to design and build this ROPS product and we hope that it provides you with many years of ROPS protection.

Tektite's ROPS products are designed to provide safe and dependable service during operation when they are properly maintained according to the instructions. Please read this installation manual carefully before installing and using this ROPS product.

The photos/illustrations provided in this manual may not provide all the detail needed, and are for reference only.

All directions provided are from the reference point of the tractor seat facing the steering wheel. All left and right references are from this view point.

For reference, please fill in the information below. This will assist your dealer in providing service for this ROPS. It is advisable that this information be provided to your insurance company as well in the event that the tractor is lost or damaged.

Vehicle Model: \_\_\_\_\_

ROPS Serial Number: \_\_\_\_\_

Date of Purchase: \_\_\_\_\_

Dealer Name: \_\_\_\_\_



## Parts List Standard Cab:

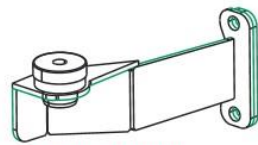
Description	Qty
Structural Washer, 1/4" thick	4
Chassis Isolator, Rubber, 5/8" (pre-installed)	4
Bolt, Hex, 5/8" x 3", Gr. 8, YD	4
Nut, Flange, 5/8", Gr. 8, YD	4
Under seat shield	1
Under seat shield upholstery	1
Bolt, Hex, 1/2" x 4 1/2", Gr. 8	2
Left Front Shield (pre-installed)	1
Right Front Shield (pre-installed)	1
Loader Control Cover Shield (pre-installed)	1
Hood Shield (pre-installed)	1
NDA-X, 3/8" x 3/4"	6 Feet
Front Cab Brackets	L&R
Wire Loom, 3/8"	2 FT
Hex Bolt, 5/16" x 2"	3
Nut, Flange, 5/16"	3
Butt Connector, Crimp On	8
Wire Loop, 1/4"	2
Zip Ties, Standard Length	2
Right Pedal Floormat	1
Fir Tree Fasteners	3

## Parts List Optional Components:

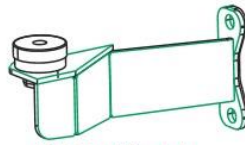
Heater

Description	Qty
Straight fitting, 3/8NPT x 3/8" barb	1
Elbow fitting, 3/8NPT x 3/8" barb	1
HS-6 hose clamps	2
Rad Hose splicer, 1 1/8"	1
HS-24 hose clamps	2

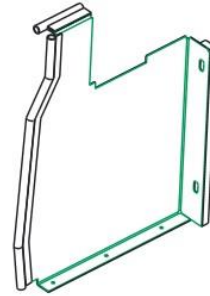




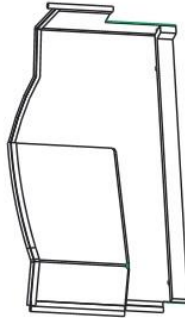
Left Front Bracket



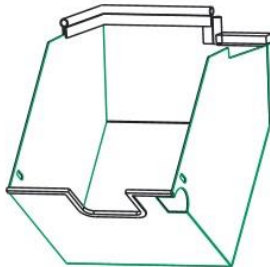
Right Front Bracket



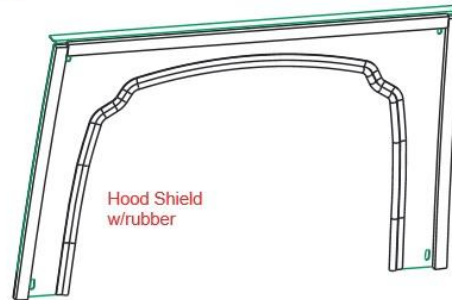
Right Kick  
Panel w/rubber



Left Kick Panel  
w/rubber



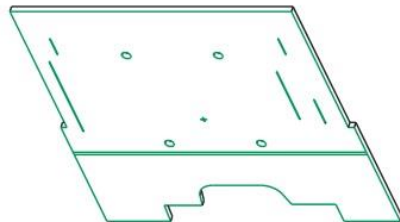
Loader Valve Box  
w/rubber



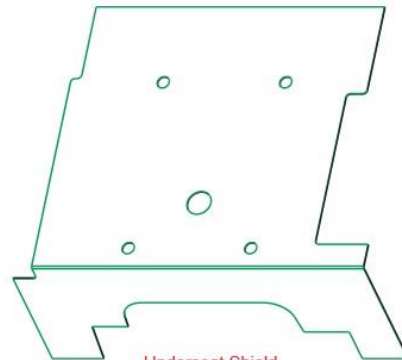
Hood Shield  
w/rubber



Right Pedal  
Floormat



Underseat Upholstery



Underseat Shield

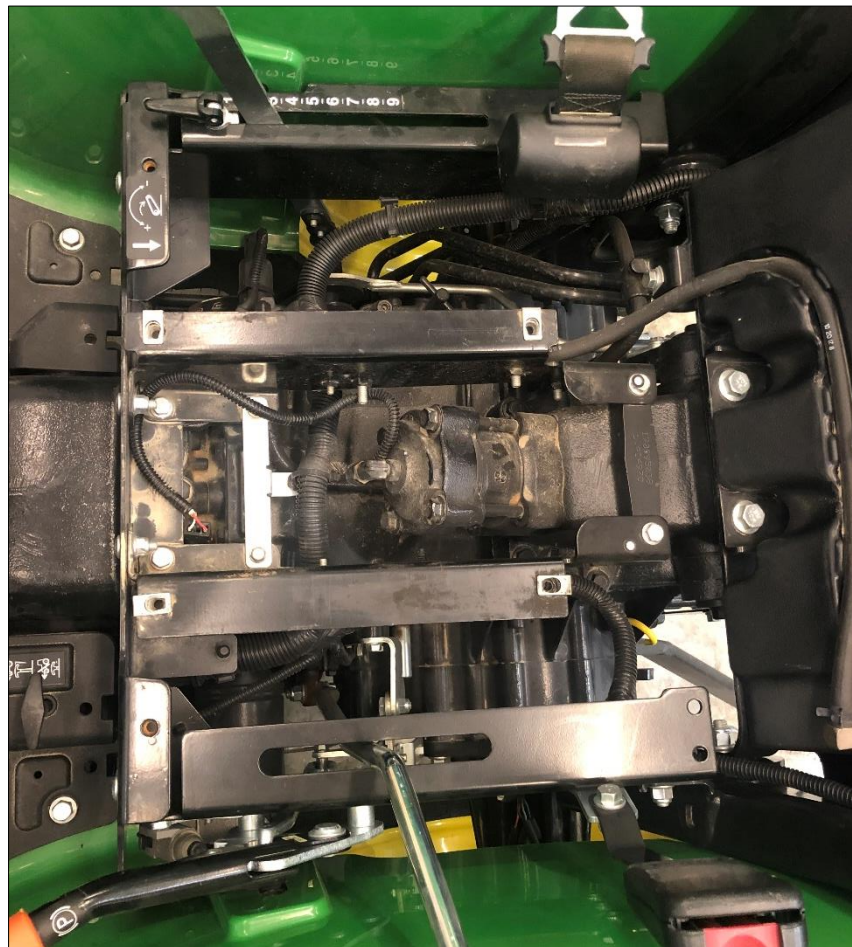


**Park tractor in a well-ventilated location. Lower all tractor attachments like front end loaders and rear 3-point attachments.**

**If tractor is equipped with rear auxiliary hydraulics, un-bolt from 2-post ROPS, they can be re-installed onto the cab later.**

**Lower the front end loader to the ground and RELIEVE all pressure from the system. Pipes will be need to removed during installation.**

- . Un-bolt the hinge pivot, and remove the upper hoop of the 2-post ROPS from the hinge point up.
- . Open the hood and remove the left and right hood side panels.
- . Un-bolt and remove rear flasher lights from the lower 2-post ROPS.
- . Carefully pull flasher wires up and out of tubing, about 12" of wire minimum per side.
- . Un-hook the seat harness, then un-bolt and remove the seat.





. Un-bolt the pipe retainer at the front of the right loader arm shown. This will allow the solid pipes to move a little during cab install and loader valve re-mounting.

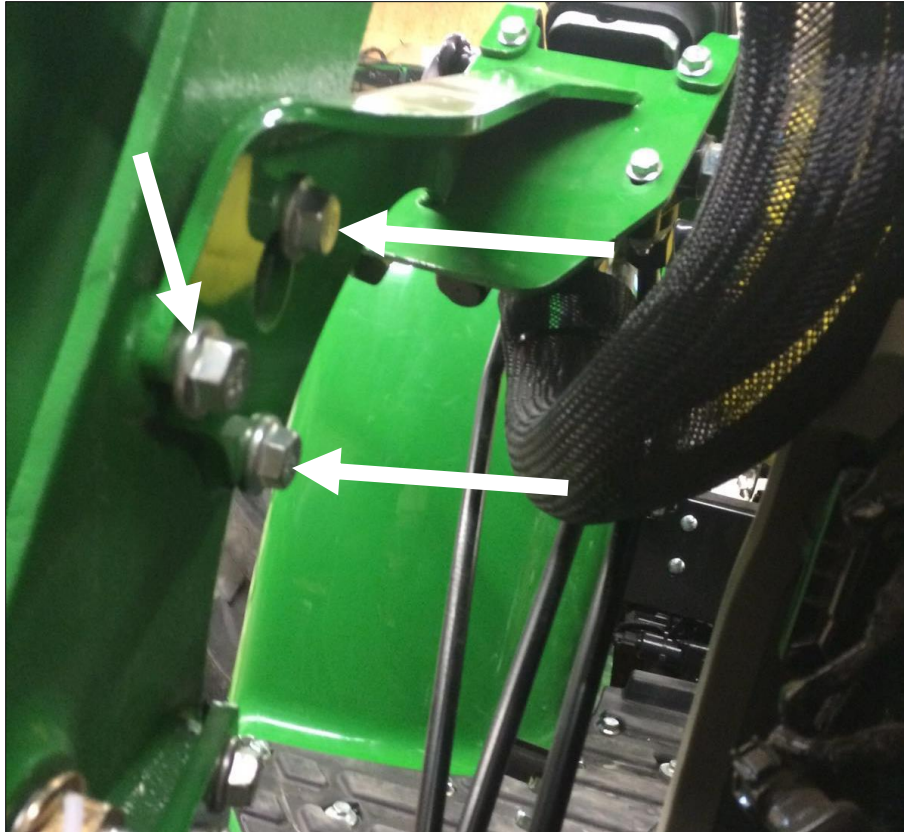


. Un-bolt the three fasteners shown that fasten the valve to the support bracket.



. Un-bolt the three fasteners that attach the loader valve bracket to the loader sub-frame shown on next page. Let the valve assembly hang as is.







. **ENSURE there is NO pressure in the hydraulic system.** Remove ALL of the hydraulic pipes that go to the loader valve and remove loader valve control.

. Un-bolt the rear two fasteners from the loader sub-frame. Take the provided left front bracket and two flat washers and two factory bolts. Slide bolts through bracket with flat washer on the inside as shown below.



. Position the bracket into the rear mounting location where the fasteners were removed and loosely fasten into place.



. Repeat for the right front bracket.





**NOTE:** For the right front bracket, the pedals are VERY tight to the bracket plate. It may be necessary to adjust the linkages to prevent interference to the bracket.

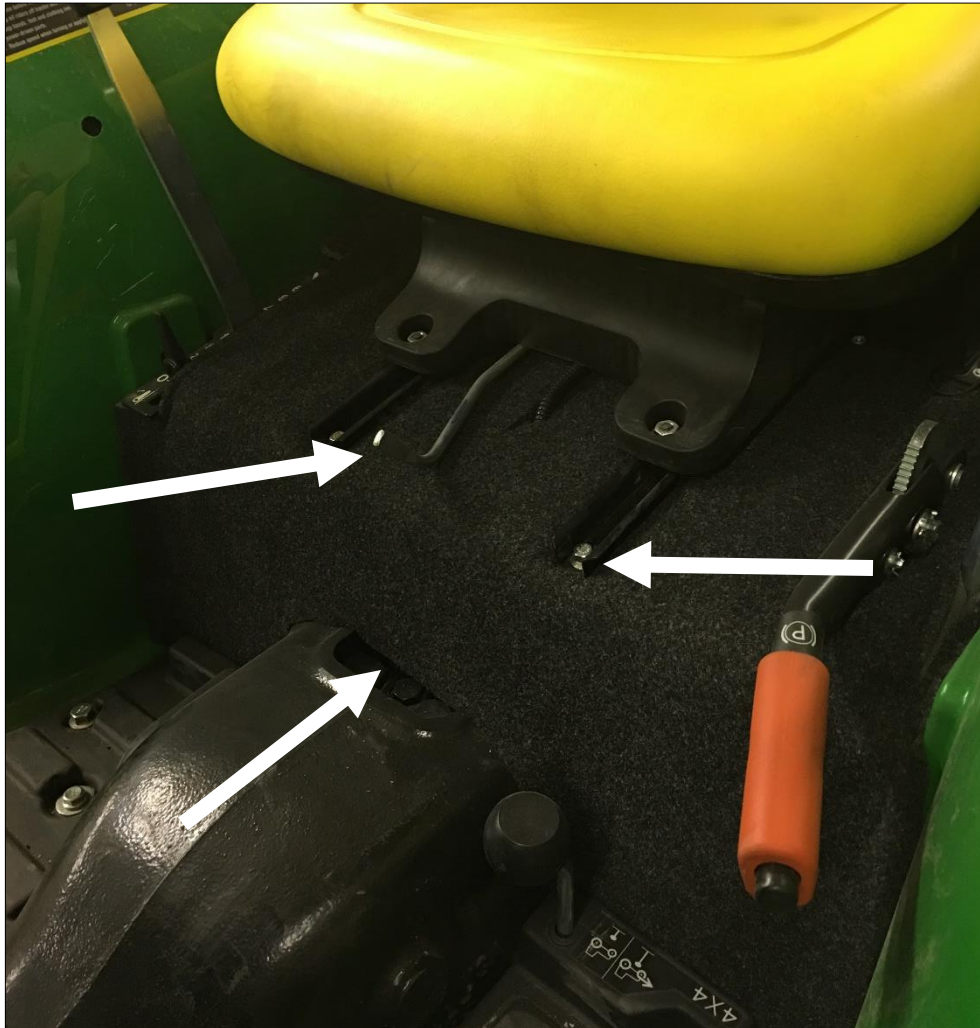
. Take the under seat shield provided and position it on the seat platform area. Pull wire connector for seat safety switch through hole in the shield.

. Take the underseat shield upholstery and position it over the shield just installed. Slide all control handles through slits in the upholstery, ensure there is full motion control of the levers. Pull seat wire connector through slit in upholstery. Using an aerosol glue, 3M High Strength 90 recommended, glue upholstery to shield. Tuck the outside edges against the tractor fender.





. Take the seat and bolt back into place with factory hardware through holes in under seat shield. Re-connect the seat wire connector.



. Take the provided 3/8" x 3/4" NDAX closed cell foam and install between the centre cowl and the floormat as shown below. After installed, use a black silicone seal to close it up completely.





. Return to the cab to install lift brackets next. To remove the gas shock on the left cab door, slide a flat screwdriver between the small clip on the end cap and the end of the shock. It must be pulled apart in order to pop the shock off the ball stud. **The shock will release very easily when this is accomplished.** Lift the door assembly straight up and off the cab and put aside for now.

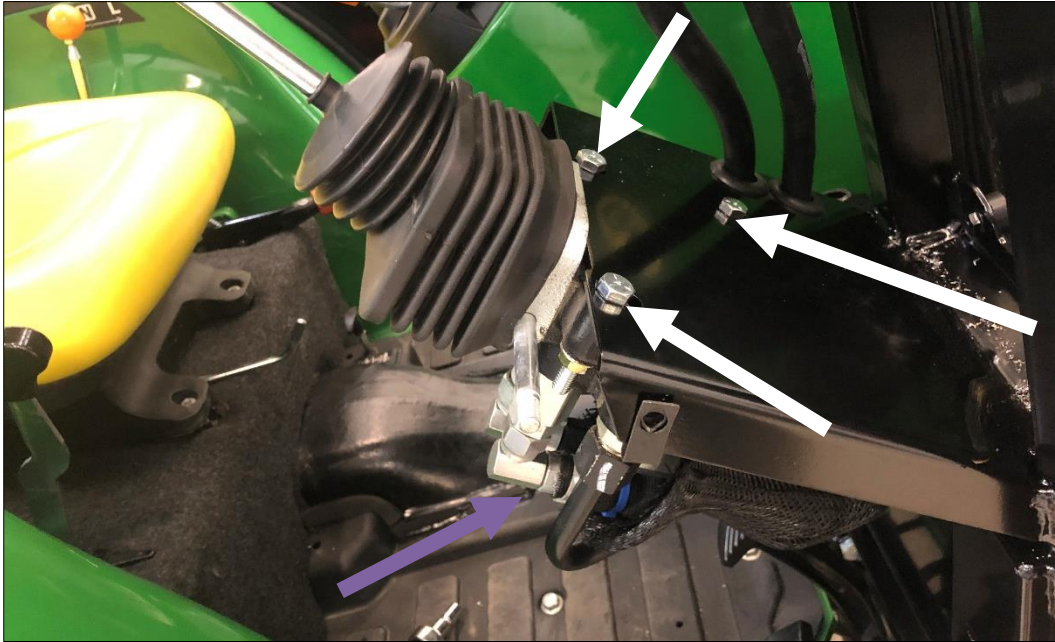


- . Un-hook the gas shock on the right cab door using the same procedure. Lift the door assembly straight up and off the cab and put aside for now.
- . Take the provided  $\frac{1}{2}$ " x 4  $\frac{1}{2}$ " hex bolts and insert each bolt into the weld nuts located behind the tabs located at the top rear corner of the door opening.
- . Attach a lift strap or chain to both lift bolts, protecting the roof if necessary, then attach to an overhead hoist or forklift. Un-bolt the cab from the shipping pallet at the front mounts, and the shipping bracket at the rear.
- . Lift cab straight up off the shipping pallet.
- . Un-bolt and remove the pre-installed hood shield, left pedal shield, right pedal shield, and loader control cover shield from the cab. Store until after cab is installed.
- . Position the cab directly over the tractor. Slowly lower down until the cab is onto the front mount bracket. It may be necessary to clamp the 2-post ROPS together if it sprang apart earlier when the upper hoop was removed. The rear mount uses the hole shown below in the 2-post ROPS.





- . Use the provided 5/8" x 3" hex bolt, heavy 1/4" flat washer, and 5/8" flange nut for the rear isolator position, NOTE alignment of bolt in photo above. Start bolts only at this point, do not tighten until all fasteners are started. Fastener only bolts through outer plate.
- . Use the provided 5/8" x 3 hex bolt, heavy 1/4" flat washer, and 5/8" flange nut for the front isolator position. The washer goes UNDER the front mounting bracket.
- . As soon as all fasteners are started, final torques can be applied to all mounting fasteners. The 5/8" isolator fasteners can have 205 ft-lbs applied. Re-torque front loader fasteners to John Deere recommended torque.
- . Loosen off lift straps or chains, then remove. Remove the lift bolts from cab, store if you intend to remove cab in the future.
- . Take the loader valve and position against the mount plate provided in the cab. Ensure that the heater hoses do not interfere with hard lines, adjust if necessary. Use the provided 5/16" x 2" hex bolts and nut and fasten the valve to the cab. Remove the knob temporarily until all cab shielding in this area is installed. It is necessary to re-align the valve to fit properly. Do not install top green plate with loader control instructions on it.

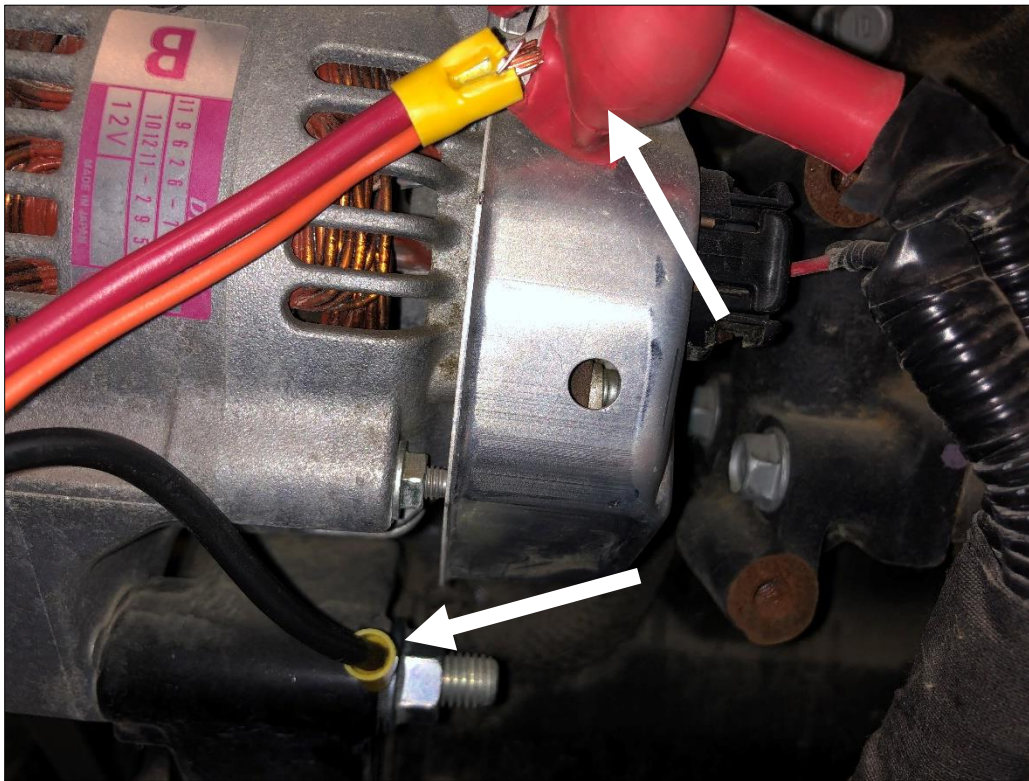


. Start to re-install the hydraulic pipes from the valve to the tractor. It will be necessary to tweak/bend some of these to get into the proper orientation. Take care to not KINK pipes.





- . Locate the wiring harness coming out of the front left A-post of the cab. Route towards the starter on the left side of the engine.



- . Connect the black wire to a ground bolt. Use the provided loop connector, shorten wire if necessary, crimp on connector then fasten to ground bolt on the tractor.

- . Connect the red wire to the main power on the starter shown in the previous photo.

For cabs equipped with the heater option:

- . Drain the engine coolant.
- . Locate the 3/8NPT plug on the right side of the engine and remove.





- . Take the provided 3/8NPT x 3/8" barb straight fitting, use a silicone sealant on the threads to prevent water leaks, and install one fitting into 3/8NPT open port on the engine.
- . Locate the lower radiator hose and cut out a short 1 1/2" section. Insert the rad hose splicer and attach with provided HS-24 hose clamps. Use the provided elbow fitting with Teflon tape around the threads and install into splicer.





- . Route the heater hose from the right front corner of the cab, and route it underneath the side hood panel. Install the hood panel if necessary to verify fitment, and ensure there will be no hose rubbing occurring.
- . Cut the heater hose and connect one end of each side of the hose to the fittings installed previously. It doesn't matter which hose is connected to which fitting. Use the provided HS-6 hose clamps, shorten the hoses if necessary. Avoid moving or hot engine parts, use the provided zip ties to secure the heater hose into place.
- . Ensure that ALL fitting connections are tight.
- . Re-fill the engine antifreeze.
- . Open the radiator cap and place a funnel into opening. Fill with engine coolant.



. Start the engine, turn on the heater fan and run the engine at PTO speed. To clear the coolant system of air pockets, the radiator will need to cycle the thermostat a few times. This will take a few minutes. The air at the louvres in the cab should be VERY HOT once the purging is complete.

**NOTE: Ensure there is adequate fresh air ventilation in the workspace you are in. Carbon monoxide from the engine exhaust is deadly.**

- . Re-install the factory tractor left hood panel cover.
- . Re-install the factory tractor right hood panel cover.
- . Take the hood shield removed earlier, and re-install back onto cab.



- . Re-install the left front panel on the cab.



. Re-install the right front panel on the cab.







. Take the valve control cover and position around the valve and against the cab. Fasten to the lower right front shield installed earlier and the loader valve mount plate on the cab. Use the bolt and nut for the one fastener in the cab.



- . Re-install the knob removed earlier on the valve control assembly.
- . Starting with the left flasher light, cut the harness approximately 10" from the light.
- . Take the left flasher light and route the harness through the large holes in the C-post. Fasten to the cab with the factory bolts and nuts. Ensure wire is inside of the cab.



. Install provided wire loom onto harness. Re-connect harness to the tractor with the provided butt connectors. Connect and crimp each wire.





- . Take the right flasher light, cut the harness approximately 10" from the light.
- . Take the right flasher light and route the harness through the large holes in the C-post. Fasten to the cab with the factory bolts and nuts. Ensure wire is inside of the cab.

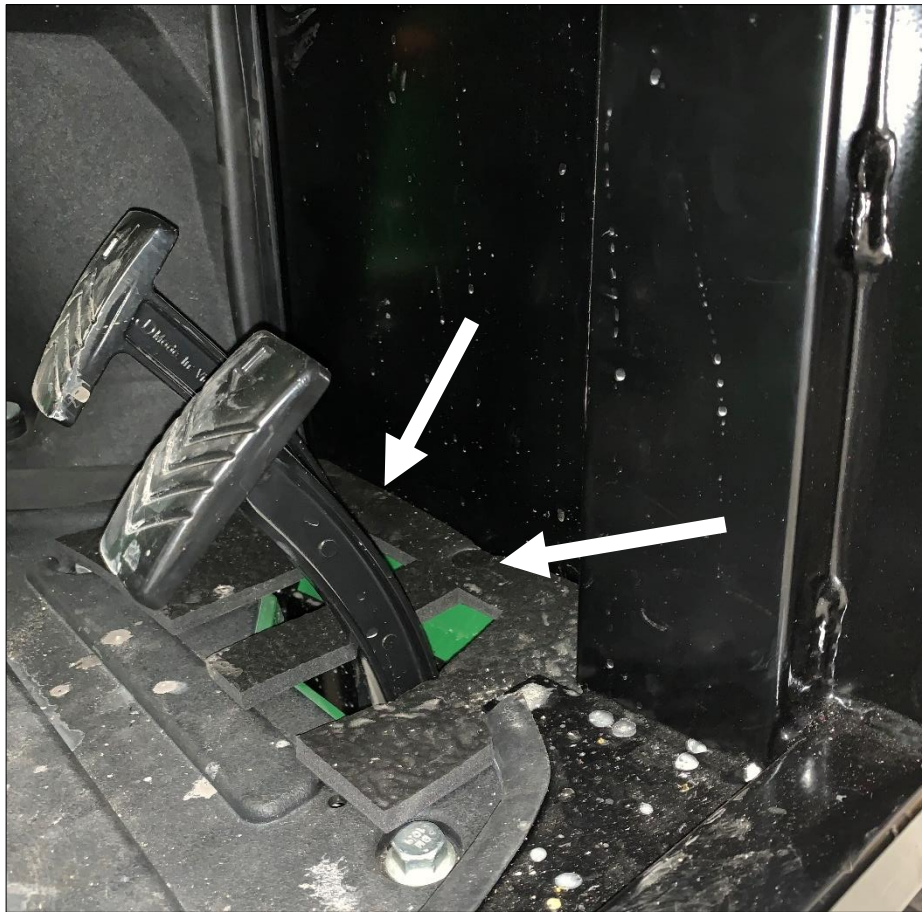


- . Install provided wire loom onto harness. Re-connect harness to the tractor with the provided butt connectors. Connect and crimp each wire.





. Take the right pedal floormat and slide around hydrostatic pedals on the right side of the floor. Ensure there is full range of controls for the pedals, notching if necessary. Use the provided fir tree fasteners to attach to the right front pedal shield.



. To ensure a better seal of all-weather stripping and floor mat pieces, it is recommended that you use a black silicone seal to seal the cab parts to the tractor.

. If tractor is equipped with the rear auxiliary hydraulics option, remove the rear access panel in the cab.

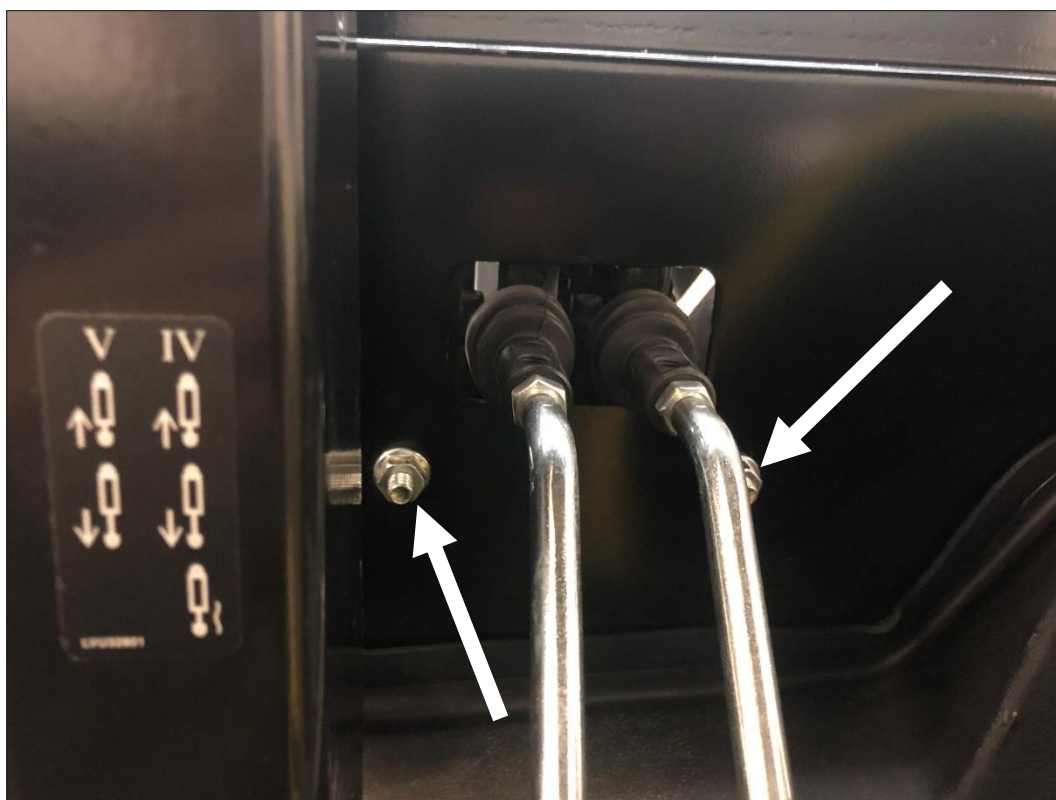
. Un-bolt and remove the handles from the control box.

. Slide the control box into position through the hole in the rear shield, re-install the levers now, while there is room to install without 2-post ROPS interference.





. Fasten the control box to the rear shield of the cab with fasteners from the control box mount removed earlier.



. Ensure there is full range of motion control with the levers.





## John Deere 3E MY19 ROPS Cab

\* Shown with optional equipment \*



### Deere 3E MY19 ROPS Cab

This ROPS cab is designed and built to fit the John Deere 3025E, 3032E and 3038E MY19 and newer ONLY.

Designed and Built by:

Tektite Manufacturing Inc:

427 Buffalo Street

P.O. Box 639

Winkler, MB

R6W 4A8

Canada

PH: 204-331-3463

Fax: 204-331-4159

[sales@tektite.ca](mailto:sales@tektite.ca)

[www.tektite.ca](http://www.tektite.ca)

One year standard product warranty provided by Tektite.



Tektite Manufacturing Incorporated thanks you for purchasing a John Deere 3032E ROPS cab! Tektite has worked very hard to design and build this ROPS product and we hope that it provides you with many years of ROPS protection.

Tektite's ROPS products are designed to provide safe and dependable service during operation when they are properly maintained according to the instructions. Please read this operator manual carefully before using this ROPS product.

The photos/illustrations provided in this manual may not provide all the detail needed, and are for reference only.

All directions provided are from the reference point of the tractor seat facing the steering wheel. All left and right references are from this view point.

For reference, please fill in the information below. This will assist your dealer in providing service for this ROPS. It is advisable that this information be provided to your insurance company as well in the event that the tractor is lost or damaged.

Vehicle Model: \_\_\_\_\_

ROPS Serial Number: \_\_\_\_\_

Date of Purchase: \_\_\_\_\_

Dealer Name: \_\_\_\_\_



## Tektite Limited Warranty

Tektite Manufacturing Inc. ("Tektite") warrants to the original purchaser (the "Claimant"), that Tektite products will be free from defective materials or workmanship, under normal use and service, for a period of (1) full year from the original invoice date. Tektite's liability under this Limited Warranty is limited to the repair or (at the discretion of Tektite) the replacement of those components of its products, which were manufactured by Tektite that are defective in materials or workmanship. Tektite shall have no liability under this Limited Warranty unless Tektite is notified of the defect during the stated Warranty Period.

Limitations and Exclusions: Tektite has no responsibility to a Claimant under this Limited Warranty or on any other basis for any of the following:

- a) defects caused, in whole or in part, by accident or misuse, negligence or failure to maintain the product or component;
- b) products or components sold to a customer on an "as is" basis;
- c) wiper blades, light bulbs, fuses, clear vinyl or other consumables;
- d) glass where the point of failure has not been preserved intact and delivered to Tektite for analysis of the cause of the failure;
- e) products or components which have been modified after shipping from Tektite to its customer;
- f) transportation charges for returned, repaired or replacement items;
- g) defects that are subject of a Tektite initiated recall where the Claimant fails to comply with the terms of the recall notice that comes to the attention of the Claimant;
- h) components of Tektite products that are manufactured by third parties (Tektite's only obligation in relation to such components shall be to accord to the Claimant the benefit of any transferable warranty accorded to Tektite by third party manufacturer);
- i) defects in workmanship or materials in products or components that are repaired or replaced by Tektite unless Tektite is notified of the new defect within the Warranty Period that applied to the original product or component that has been repaired or replaced;
- j) defects that result, in whole or in part, from inadequate engineering or specifications provided to Tektite by its customer;
- k) any actual or alleged deficiency in technical or engineering services or advice provided by Tektite to its customer whether provided for valuable consideration or otherwise;
- l) consequential damages, or any other damages whether foreseeable or not, resulting from the defect or any delay in remedying the defect;
- m) any breach or alleged breach of any implied warranty of merchantability or fitness for particular purpose of use;
- n) defects or part failure due to misuse or failure to follow recommended cab installation procedures; and
- o) travel expenses, including mileage.

This Limited Warranty expresses the entire obligation of Tektite, its officers, directors, agents and employees, to its customer or any Claimant in respect of any defect in workmanship, or materials of any product or component sold or manufactured by Tektite whether on grounds of breach of contract, negligence or other tortious liability, breach of express or implied warranty or other basis in law of any jurisdiction.

Acceptance by a customer of delivery of products of Tektite constitutes acceptance of this Limited Warranty in lieu of all other warranties express or implied including without limitation all implied warranties of merchantability or fitness for particular purpose or use and constitutes acceptance by customer of the exclusions and limitations of the liability of Tektite set out above. Once received, the cab should have ALL exterior cardboard, Styrofoam wrapping removed for immediate inspection of product to ensure that no damages have occurred during transportation. Outer coverings should stay off the cab and the cab be stored indoors in a controlled environment. The warranty card must be completed and returned to Tektite.

---

Warranty claims should be reported to [parts@tektite.ca](mailto:parts@tektite.ca). A warranty claim form and instructions will be provided at this time. Warranty work not pre-authorized by Tektite may not be covered by this warranty agreement. Labor rate and time allowances are fixed by Tektite. Approved warranty claims will be issued in the form of credits applied to customer account.



## Safety Precautions

### *Safety First*

Read these instructions carefully. It is essential that you read the instructions and safety regulations before you attempt to assemble or use the features that are on this cab/ROPS.

**Danger:** Indicates an immediate hazardous situation which, if not avoided, will result in death or serious injury.

**Warning:** Indicates a potentially hazardous situation which, if not avoided, may result in death or serious injury.

**Caution:** Indicates a potentially hazardous situation which, if not avoided, may result in minor or moderate injury.

**Important:** Indicates that cab or property damage may result if instructions are not carefully followed.

**NOTE:** All products are designed to give safe, dependable service if they are operated and maintained according to instructions. It is the owner's responsibility to be certain anyone operating this product reads this manual, and all other applicable manuals, to become familiar with this cab and all safety precautions. Failure to do so could result in serious personal injury or cab damage. If you have any questions, consult your dealer. Read and understand this manual before operation.

**NOTE:** A safe operator is the best assurance against accidents. All operators, no matter how experienced they may be, should read this operator manual and all other related manuals before attempting to operate features in this cab/ROPS and operate the base tractor. Please read the following section and pay particular attention to all safety recommendations contained in this manual and those labelled on the cab and on the tractor.



## **General Safety**

1. Never let an unqualified or untrained driver operate the tractor.
2. Keep a fire extinguisher, with ABC rating securely fastened in the ROPS. Maintain it and be familiar with its use.
3. Do not carry passengers.
4. Never operate the tractor in a closed building for a prolonged period. Ensure adequate ventilation is present, as engine exhaust fumes are poisonous and can kill.
5. Always keep sleeves, jackets or other loose clothing relatively tight and belted. Loose clothing may catch on moving parts and result in severe personal injury or death.
6. Provide a first-aid kit, securely attached inside of the ROPS for use in case of accident.
7. Never jump from the tractor. There is a danger of tripping or falling on protruding parts.
8. Use steps and hand holds when mounting and dismounting the tractor, or for servicing components too high to reach from the ground.
9. When seated in the ROPS, fasten seat belt before starting the engine. A proper seat belt must be worn at all times when using a ROPS.
10. Safety devices and shields are intended to protect operators from injury or death. Under no circumstances should they be modified, disabled or removed.

## **Operating Safety**

1. Always operate the tractor controls while sitting in the operator's seat.
2. Lock seat in position and buckle seat belt before operating the tractor.
3. Avoid abrupt sharp turns at high speeds.
4. On sloped terrain, do not make sharp turns as machine stability could be compromised.
5. Operate the tractor smoothly, avoid abrupt starts and stops.
6. Keep all shields in place when operating the tractor.
7. Do not operate the tractor when you are tired, sick, or impaired.
8. Never operate the tractor in confined areas; visibility next to the tractor is reduced. Injury to bystanders or damage to the ROPS or equipment may result.

## **Safety**

Carefully review the procedures given in this manual and the tractor operator's manual with all operators annually. It is important that all operators become familiar with, and follow safety precautions. Operating instructions must be given to everyone using the tractor before operation and at least once yearly thereafter in compliance with OSHA Regulations 1928.57 (United States).



### **Safe Operation on Rough Terrain**

1. Drive the tractor slowly on hillsides and curves to eliminate the danger of tipping. Avoid slopes which are too steep for safe operation. Avoid sharp uphill turns.
2. Always drive slowly enough over rough ground or obstructions. Drive at speeds slow enough to ensure your safety.
3. When driving out of a ditch, gully, or up a steep hillside, engage the clutch slowly. Avoid sharp uphill turns.
4. When descending steep grades, select a sufficiently low gear to maintain control with minimum use of braking.
5. Use caution when driving near the edge of a ditch or gully. It may cave in, causing the tractor to roll over.
6. Be alert when operating near trees, slopes and around obstructions. Tree branches can cause damage to ROPS components.

### **Maintenance Safety**

1. Remove mud, crop residue, chains, and tools from steps and operator's platform. They may interfere with pedal operation or entry/exit from tractor.
2. When servicing components are too high to reach from the ground use steps and handholds. Do not use fenders or shields that are not designed as steps.

### **Safe Highway Operation**

1. Before operating the tractor on, or near, public roadways check with your local authorities for any local regulations that will affect you.
2. Equip towed implements with slow moving vehicle (SMV) signs when traveling on public roads.
3. Install additional lights on implement rear to safeguard against rear end collisions.
4. Use hazard warning flashers as required by law when transporting or driving on public roads. If the tractor had warning flashers removed when mounting the ROPS, they must be replaced prior to operation on public roads.
5. Keep to the right, yielding right-of-way traffic, especially if pulling implements. Pull off the road and stop to allow motorists to pass. Drive on the road shoulder, if permitted by law.
6. Use extreme caution when pulling heavy loads at road speeds. Avoid hard application of the tractor brakes at high speed.
7. Always drive slowly near curbs, approaches or ditches.
8. If equipped, ensure headlights are aligned so they will not blind the operator's of oncoming vehicles. If the tractor is not equipped with turn signals and law requires them, install them prior to operating on or near public roads.



9. Use your turn signals, checking for traffic well in advance of turning. If the tractor is not equipped with turn signals and law requires them, install them prior to operating on or near public roads.

### **Safety Decals**

1. Keep decals clean. Remove dirt with a wet clean cloth when necessary.
2. Replace safety decals if destroyed, missing, painted over or unreadable. If any safety decals are covered or obscured when the ROPS is mounted, it is recommended that you purchase replacement decals from the tractor manufacturer. Mount them in a readable location at, or near, their original location before operating the tractor.
3. New ROPS decals and tractor decals are available from your tractor dealer.

### **ROPS Safety**

1. Install the ROPS in accordance with Tektite mounting instructions. Failure to do so may affect the ROPS ability to withstand a roll over.
2. If the ROPS is subjected to alteration, structural damage or involved in an over turn accident, the entire structure must be replaced. Failure to do so may result in injury or death in the event of a roll over.
3. If the tractor is not equipped with seat belts, purchase approved seat belts from the tractor manufacturer or Tektite prior to operating the tractor.
4. Always fasten seat belts prior to operating the tractor.
5. Always operate the tractor from the operator's seat.
6. Remove mud, crop residue, chains and tools from steps and operator's platform. They may interfere with pedal operation or entry/exit from the tractor.
7. Remove all loose chains, tools, and equipment from the operator's platform. Failure to do so may cause injury or death in the event of a roll over.
8. Do not install the ROPS on a tractor model that the ROPS is not designated for (compatible tractor designations are printed on the ROPS serial number plate). The ROPS is designed specifically for individual models to ensure ROPS requirements will be met. Installing the ROPS on a non designated tractor may result in injury or death.

### **Emergency Exits**

The ROPS cab has two doors. Either one can be used during an emergency.

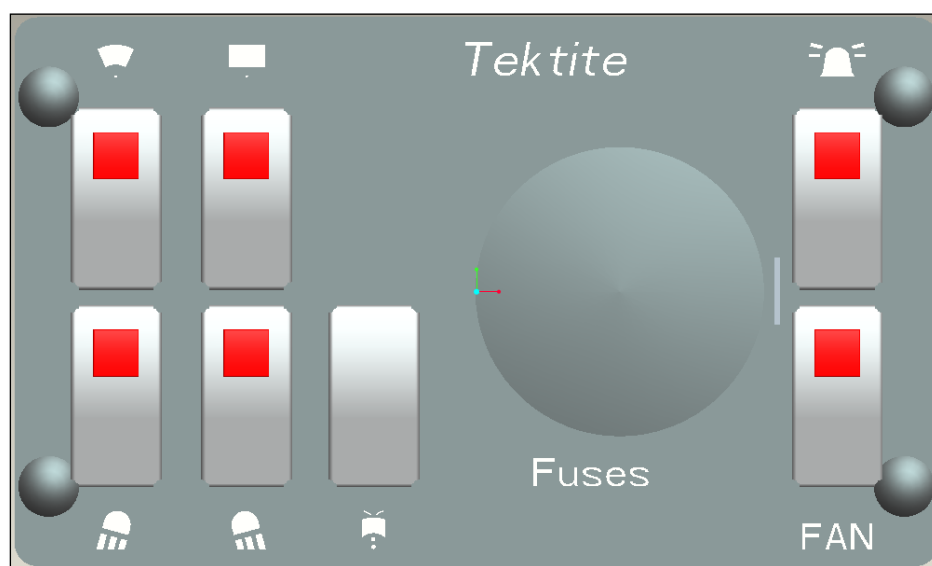


## Operating Instructions

### **Important**

The following section locates, identifies and briefly describes the functions of all cab controls. All operators should familiarize themselves with control location and function prior to operating the tractor. Failure to do so may result in unsafe operation of the tractor and possible injury or death to operators and bystanders.

There is one switch plate located in the cab. The following switches are available and their functionality is described.



### **Cab Switch Plate**

#### **1. Front Wiper Rocker Switch (standard)**

Low position: Off

High position: On

Note: indicator light activates when wiper is on.

#### **2. Rear Wiper Rocker Switch (not available on all models)**

Low position: Off

High position: On

Note: indicator light activates when wiper is on.

#### **3. Front Work Light Rocker Switch (standard)**

Low position: Off

High position: On

Note: indicator light activates when work lights are on.





#### **4. Rear Work Light Rocker Switch (optional)**

Low position: Off

High position: On

Note: indicator light activates when work light is on.

#### **5. Washer Momentary Rocker Switch (Front and Rear optional)**

Low position: On

Mid position: Off

High position: On

#### **6. Beacon Rocker Switch (optional)**

Low position: Off

High position: On

Note: indicator light activates when work lights are on.

#### **7. Water Heater Fan Rocker Switch (optional)**

Low position: Off

High position: On

Note: indicator light activates when work lights are on.

Standard and optional features are individually fused, and the fuses can be accessed behind the plug in the middle of the switch plate.

### **Cab Circuit Protection**

The Tektite ROPS cab is wired to provide maximum protection against individual circuit overload. All optional components are fused internally behind the cab switch plate. Cab wiring is direct to the tractor battery.



## **After your ROPS Cab has been installed:**

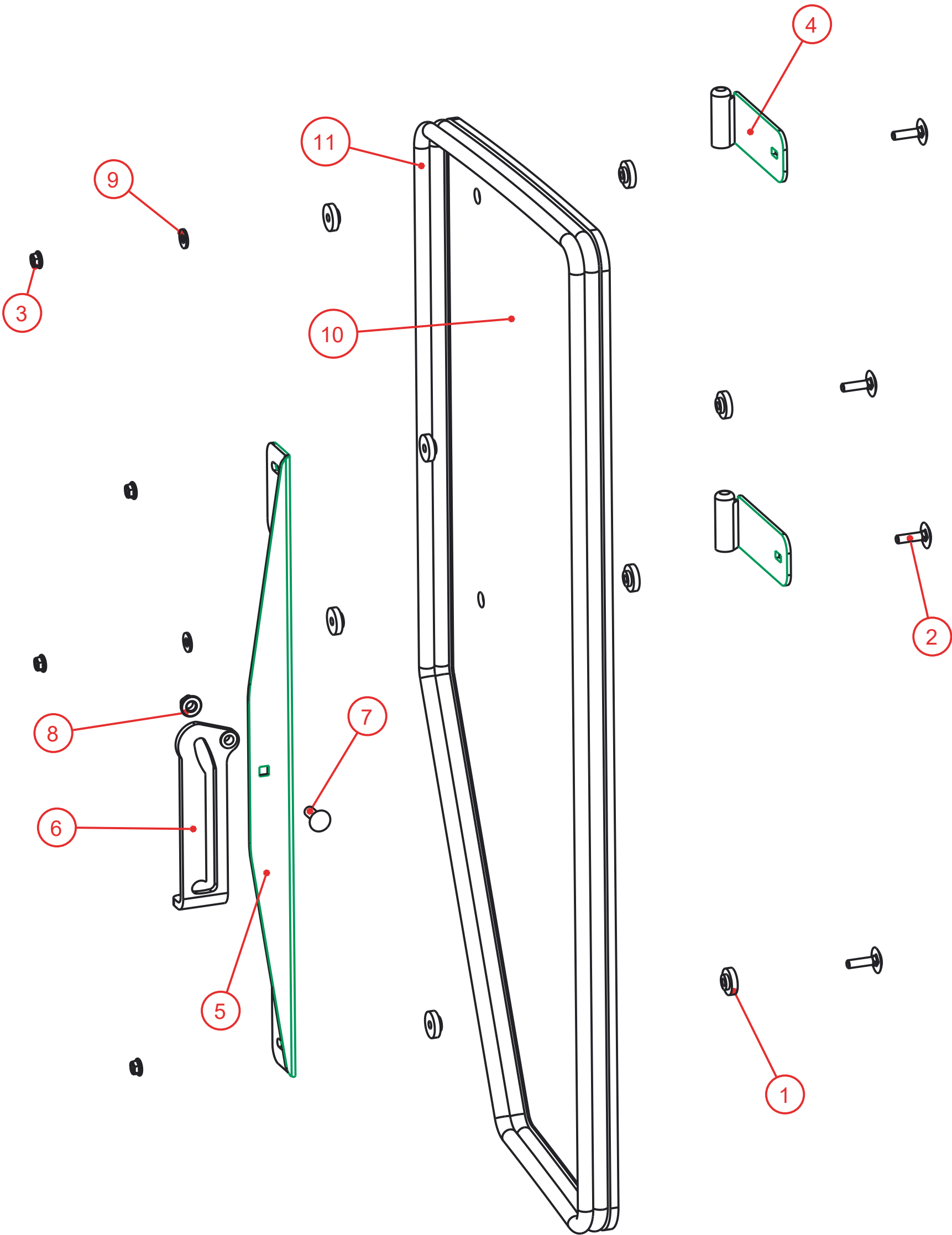
Before starting a tractor equipped with a Tektite ROPS cab:

1. Clear the operator platform of all tools. Tools left in or around the ROPS and tractor can cause operator interference which could lead to bodily injury and/or damage the machine.
2. Inspect the ROPS and tractor to ensure all bolts are tight and re-tighten if required.
3. Ensure that all pedals, levers, and controls have adequate clearance for normal operation.
4. Ensure that all electrical components of both the ROPS and tractor operate normally.
5. Ensure your door latches properly onto the striker pin. Immediately after installation, the ROPS frame may flex slightly from installation, and the door latch may need to be re-aligned for proper operation. Loosen the striker pin, striker mounting plate and door latch as necessary to get a proper alignment of the door striker.

## **Service Parts Breakdowns:**

Following are parts breakdowns for components that may require service parts replacement during the life of the ROPS. If you require replacement parts, please contact the dealer that you purchased the ROPS from and indicate which parts you require.

Index	Service Part #	File Name	Description	Qty
1	A00-0013	TEKT-0009	5MM Bushing	8
2	A00-0019	STEP-BOLT1-4X1	Step Bolt, 1/4" x 1", MB	4
3	A00-0021	FLANGE-NUT-1-4	Flange Nut, 1/4", YD	4
4	A00-0044	TEKT-ASM-002	Side Window Hinge Weldment	2
5	A00-0045	TEKT-0004	Side Window Slider Bracket, 1" tube	1
6	A00-0057	TEKT-0020MIR	Side Window Latch, L60776	1
7	A00-0058	CARRIAGE_BOLT-5-16X1	Bolt, Carriage, 5/16"x 1", YD	1
8	A00-0059	FLANGE-NUT-5-16	Flange Nut, 5/16", YD	1
9	A00-0119	WASHER_1-4	Washer, Flat, 1/4"	2
10	J19-0004	JD3E-027	Side Window Glass	1
11	J19-0009	JD3E-057-	Side Window Seal	1



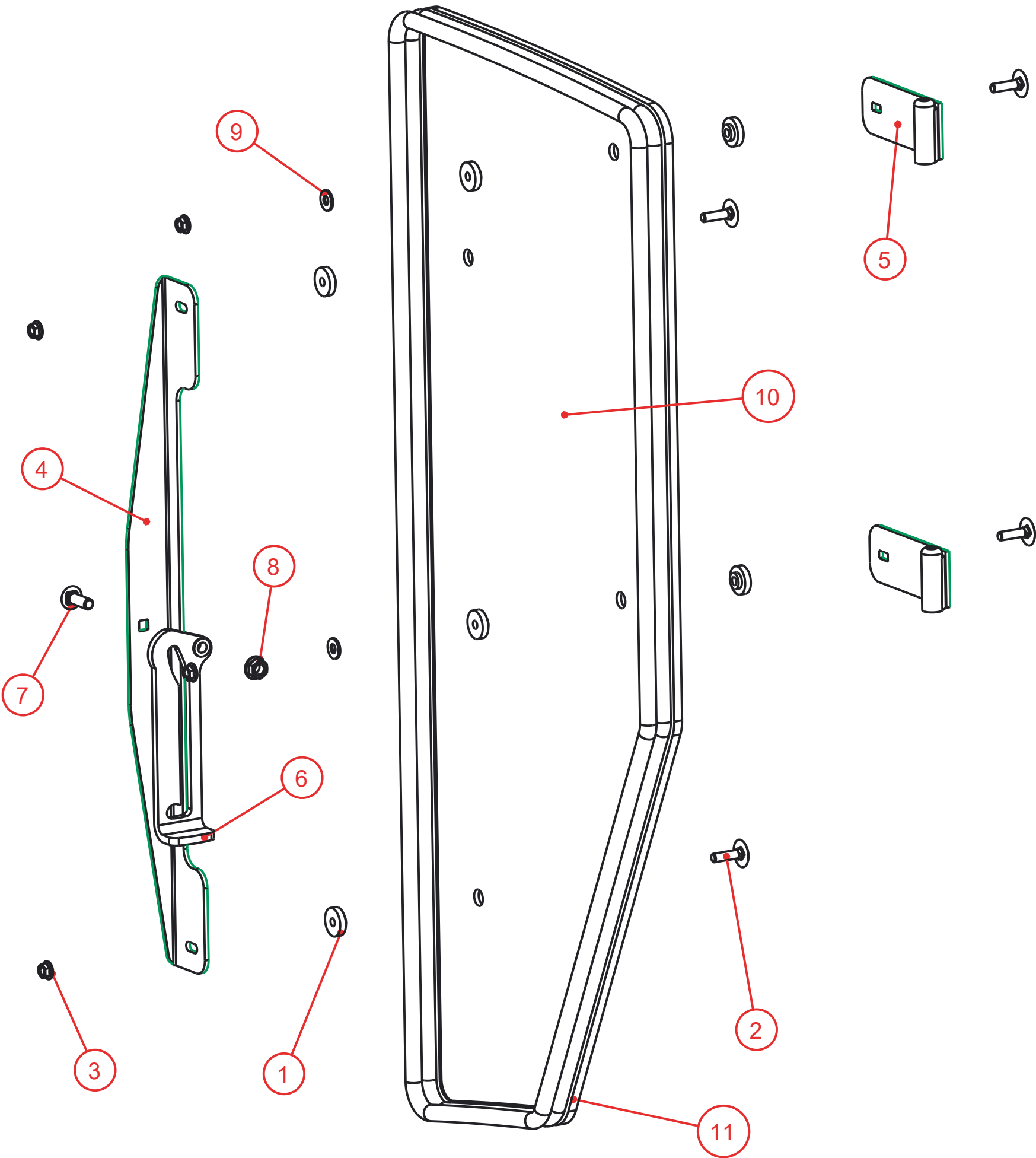
Notice of Confidentiality

This material is property of Tektite Manufacturing Inc and is not to be used by the recipient for any purpose other than the purpose for which it was transmitted. The material remains the property of Tektite and shall be returned upon request. The material may not be reproduced or disclosed to third parties without the written consent of Tektite.

Tolerances:  
Unless otherwise specified  
  
X.X = ± 1/16"  
Angular = ± 1.0°

Tektite Manufacturing Inc. 427 Buffalo Street, Winkler MB, R6W 4A8, Canada					
Req'd: 1 req	CNC:	Description: Left Side Window Assembly			
Drawn By: Daryl Furkalo	Date: 2019-08-08	Units: Imp.	File Name: JD3E-ASM-O6_OP		
Checked By:	Date:	Size: B			

Index	Service Part #	File Name	Description	Qty
1	A00-0013	TEKT-0009	5MM Bushing	8
2	A00-0019	STEP-BOLT1-4X1	Step Bolt, 1/4" x 1", MB	4
3	A00-0021	FLANGE-NUT-1-4	Flange Nut, 1/4", YD	4
4	A00-0045	TEKT-0004	Side Window Slider Bracket, 1" tube	1
5	A00-0046	TEKT-ASM-002R	Side Window Hinge Right	2
6	A00-0056	TEKT-0020	Side Window Latch, L60775	1
7	A00-0058	CARRIAGE_BOLT-5-16X1	Bolt, Carriage, 5/16"x 1", YD	1
8	A00-0059	FLANGE-NUT-5-16	Flange Nut, 5/16", YD	1
9	A00-0119	WASHER_1-4	Washer, Flat, 1/4"	2
10	J19-0004	JD3E-027	Side Window Glass	1
11	J19-0009	JD3E-057R	Side Window Seal	1



### Notice of Confidentiality

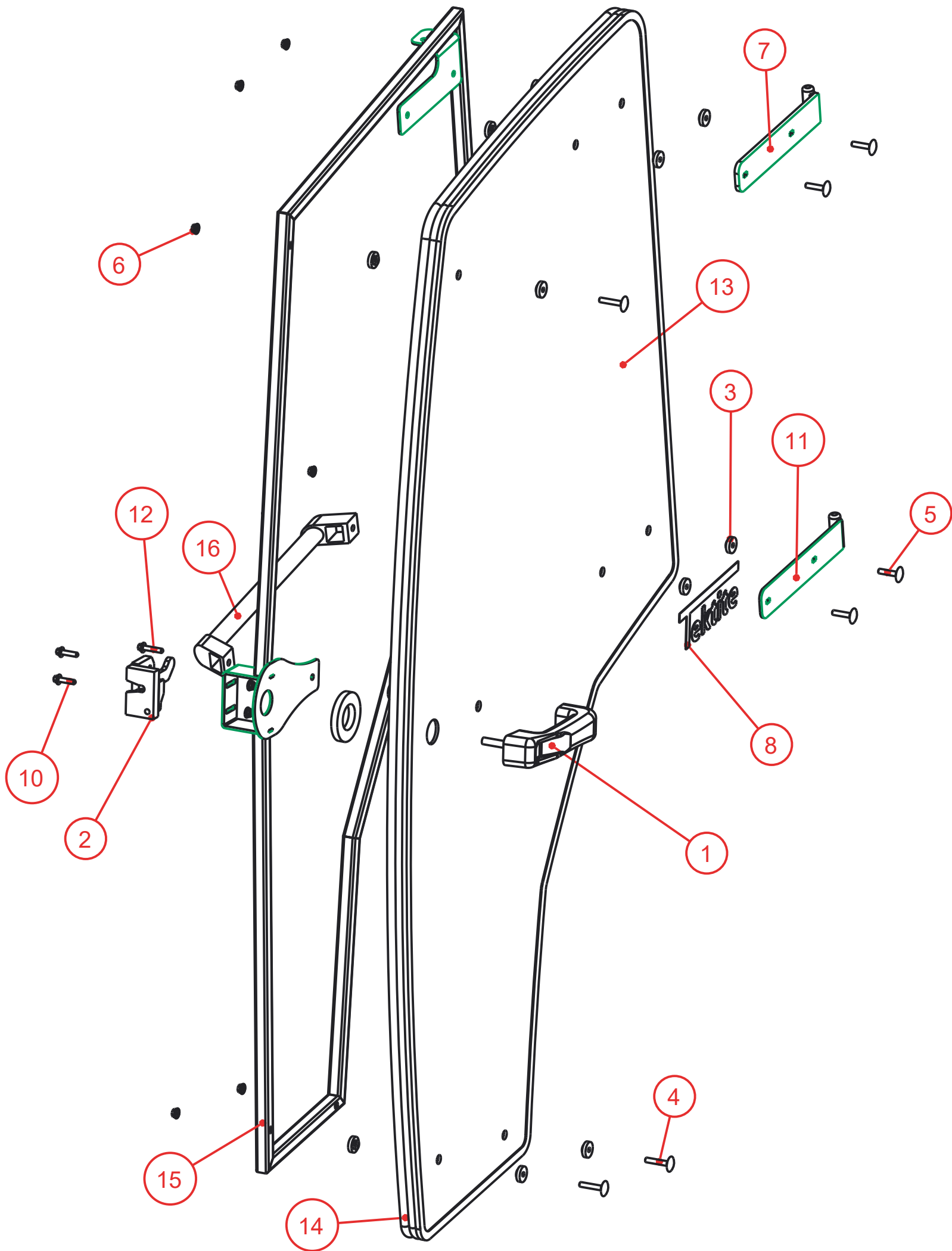
This material is property of Tektite Manufacturing Inc and is not to be used by the recipient for any purpose other than the purpose for which it was transmitted. The material remains the property of Tektite and shall be returned upon request. The material may not be reproduced or disclosed to third parties without the written consent of Tektite.

**Tolerances:**  
Unless otherwise specified  
X.X =  $\pm 1/16"$   
Angular =  $\pm 1.0^\circ$

Tektite Manufacturing Inc. 427 Buffalo Street, Winkler MB, R6W 4A8, Canada					
Req'd:	CNC:	Description:			
1 req		Right Side Window Assembly			
Drawn By:	Date:	Units:	File Name:		
Daryl Furkalo	2019-08-08	Imp.	JD3E-ASM-O6R_OP		
Checked By:	Date:	Size:			
		B			



Index	Service Part #	File Name	Description	Qty
1	A00-0001	DLP-HANDLE	Outside Push Button Handle	1
2	A00-0002	LEFT-LATCH	Suicide Door Left Latch	1
3	A00-0013	TEKT-0009	5MM Bushing	15
4	A00-0018	STEP-BOLT1-4X1-1-2	Step Bolt, 1/4" x 1 1/2", MB	3
5	A00-0020	STEP-BOLT1-4X1-1-4	Step Bolt, 1/4" x 1 1/4", MB	4
6	A00-0021	FLANGE-NUT-1-4	Flange Nut, 1/4", YD	9
7	A00-0039	TEKT-ASM-001	Left Door Hinge Weldment, Upper	1
8	A00-0041	TEKTITE-DECAL	Tektite Cab Decal - Solid White	1
9	A00-0118	FLANGE_BOLT_1-4X1	Flange Bolt, 1/4" x 1", YD	2
10	A00-0177	TEKT-0068	Handle Washer Spacer	1
11	A00-0228	TEKT-ASM-029	Left Door Hinge Weldment, Lower	1
12	A00-0295	FLANGE_BOLT_M6X30	Flange Bolt, M6x30, YD	1
13	J19-0003	JD3E-028	Door Glass	1
14	J19-0008	JD3E-059-	Door Seal	1
15	J19-0011	JD3E-ASM-08	Left Door Frame Weldment	1
16	J19-0017	JD3E-058	Door Handle, JD3e	1



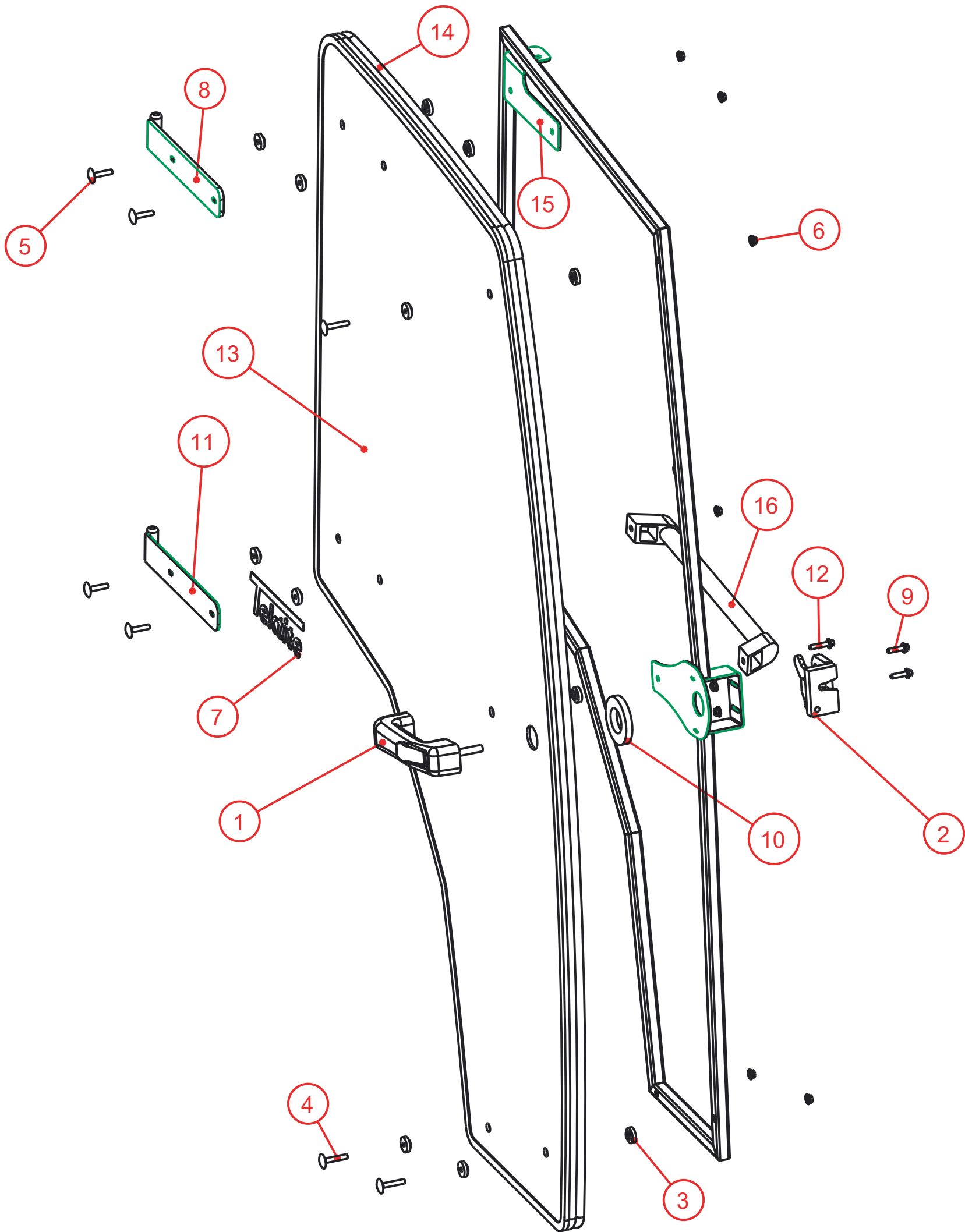
### Notice of Confidentiality

This material is property of Tektite Manufacturing Inc and is not to be used by the recipient for any purpose other than the purpose for which it was transmitted. The material remains the property of Tektite and shall be returned upon request. The material may not be reproduced or disclosed to third parties without the written consent of Tektite.

**Tolerances:**  
Unless otherwise specified  
X.X =  $\pm 1/16"$   
Angular =  $\pm 1.0^\circ$

Tektite Manufacturing Inc. 427 Buffalo Street, Winkler MB, R6W 4A8, Canada					
Req'd:	1 req	Description: Left Door Assembly			
Drawn By:	Daryl Furkalo	Date:	2019-08-08	Units:	Imp.
Checked By:		Date:		File Name:	JD3E-ASM-07_OP
				Size:	B

Index	Service Part #	File Name	Description	Qty
1	A00-0001	DLP-HANDLE	Outside Push Button Handle	1
2	A00-0003	RIGHT-LATCH	Suicide Door Right Latch	1
3	A00-0013	TEKT-0009	5MM Bushing	15
4	A00-0018	STEP-BOLT1-4X1-1-2	Step Bolt, 1/4" x 1 1/2", MB	3
5	A00-0020	STEP-BOLT1-4X1-1-4	Step Bolt, 1/4" x 1 1/4", MB	4
6	A00-0021	FLANGE-NUT-1-4	Flange Nut, 1/4", YD	9
7	A00-0041	TEKTITE-DECAL	Tektite Cab Decal - Solid White	1
8	A00-0042	TEKT-ASM-001R	Right Cab Door Hinge Weldment, Upper	1
9	A00-0118	FLANGE_BOLT_1-4X1	Flange Bolt, 1/4" x 1", YD	2
10	A00-0177	TEKT-0068	Handle Washer Spacer	1
11	A00-0229	TEKT-ASM-029R	Right Door Hinge Weldment, Lower	1
12	A00-0295	FLANGE_BOLT_M6X30	Flange Bolt, M6x30, YD	1
13	J19-0003	JD3E-028	Door Glass	1
14	J19-0008	JD3E-059R	Door Seal	1
15	J19-0012	JD3E-ASM-08R	Right Door Frame Weldment	1
16	J19-0017	JD3E-058	Door Handle, JD3e	1



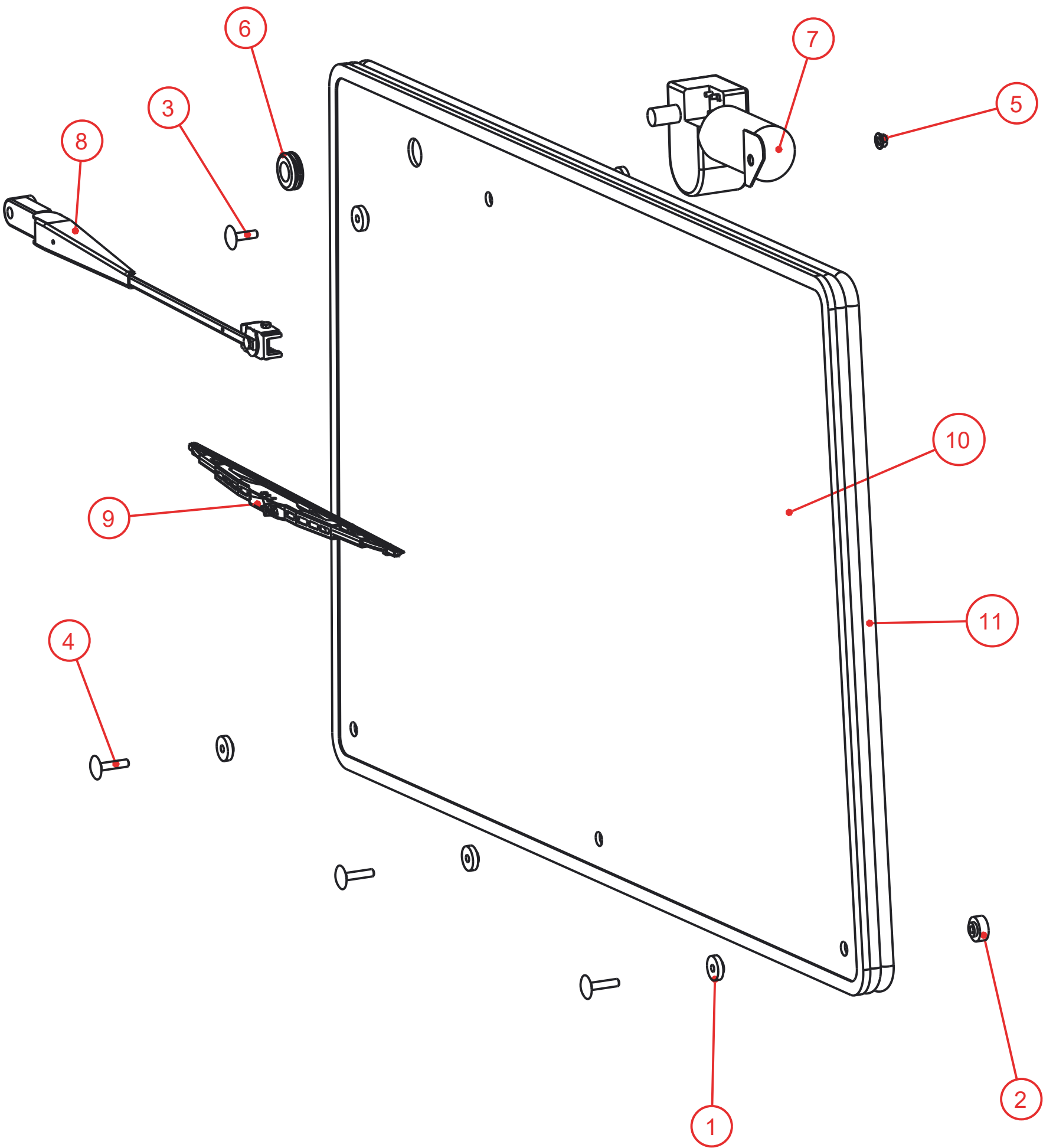
Notice of Confidentiality

This material is property of Tektite Manufacturing Inc and is not to be used by the recipient for any purpose other than the purpose for which it was transmitted. The material remains the property of Tektite and shall be returned upon request. The material may not be reproduced or disclosed to third parties without the written consent of Tektite.

**Tolerances:**  
Unless otherwise specified  
X.X =  $\pm 1/16"$   
Angular =  $\pm 1.0^\circ$

Tektite Manufacturing Inc. 427 Buffalo Street, Winkler MB, R6W 4A8, Canada					
Req'd:	1 req	Description: Right Door Assembly			
Drawn By:	Daryl Furkalo	Date:	2019-08-08	Units:	Imp.
Checked By:		Date:		File Name:	JD3E-ASM-07R_OP
				Size:	B

Index	Service Part #	File Name	Description	Qty
1	A00-0013	TEKT-0009	5MM Bushing	5
2	A00-0014	TEKT-0092	Thick Bushing	3
3	A00-0019	STEP-BOLT1-4X1	Step Bolt, 1/4" x 1", MB	1
4	A00-0020	STEP-BOLT1-4X1-1-4	Step Bolt, 1/4" x 1 1/4", MB	3
5	A00-0021	FLANGE-NUT-1-4	Flange Nut, 1/4", YD	4
6	A00-0033	315-080	Rear Wiper Shaft Grommet	1
7	A00-0043	WWF-MOTOR	WWF Wiper Motor, 1" Shaft	1
8	A00-0108	TEKT-ASM-037	WWF, Adjustable Radial Arm, 15" to 19"	1
9	A00-0339	NAPA_6-1565	Deluxe 16" WWF	1
10	J19-0002	JD3E-037	Rear Window Glass	1
11	J19-0007	JD3E-060-	Rear Window Seal	1



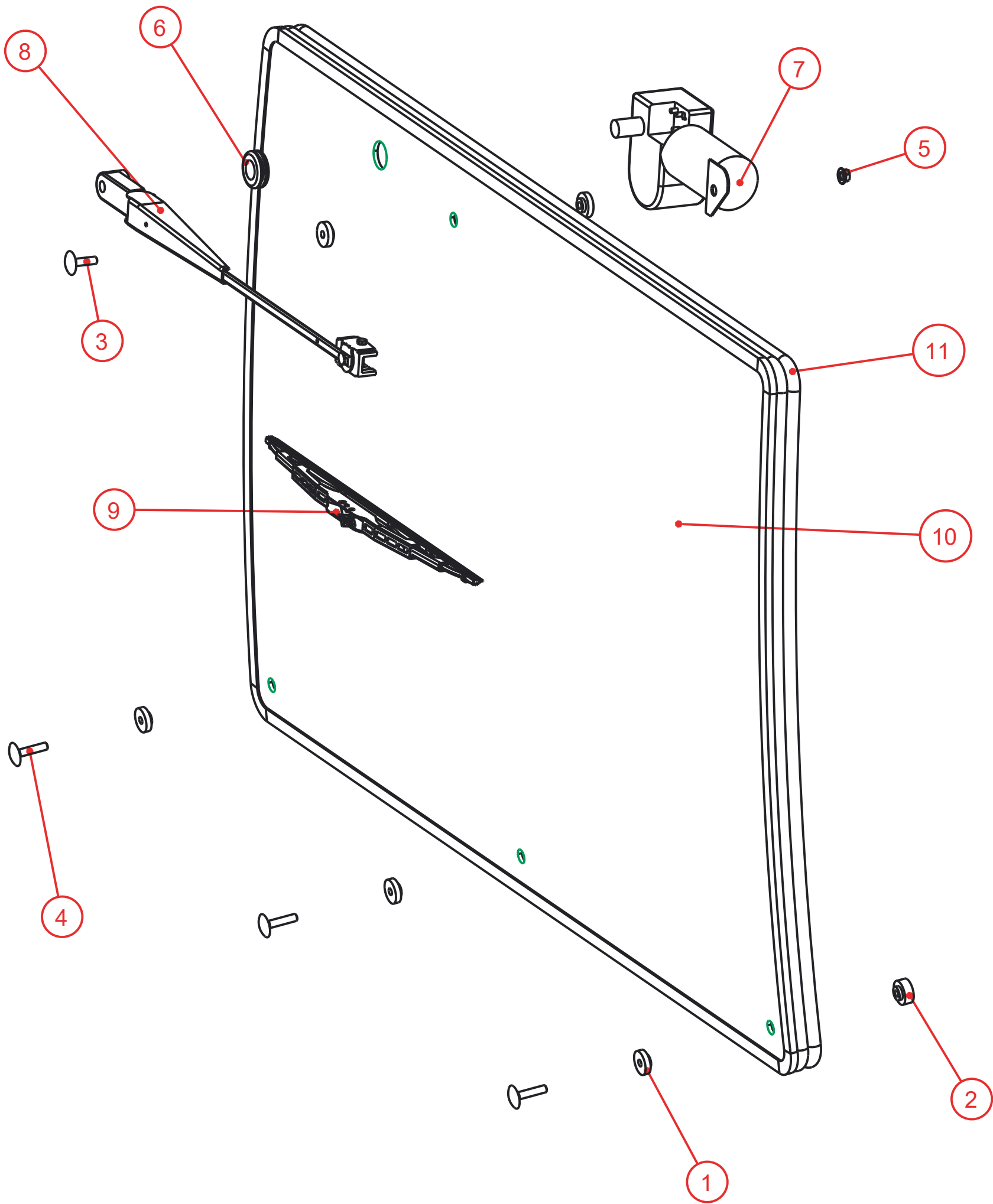
### Notice of Confidentiality

This material is property of Tektite Manufacturing Inc and is not to be used by the recipient for any purpose other than the purpose for which it was transmitted. The material remains the property of Tektite and shall be returned upon request. The material may not be reproduced or disclosed to third parties without the written consent of Tektite.

**Tolerances:**  
Unless otherwise specified  
X.X =  $\pm 1/16"$   
Angular =  $\pm 1.0^\circ$

Tektite Manufacturing Inc. 427 Buffalo Street, Winkler MB, R6W 4A8, Canada					
Req'd:	CNC:	Description:			
1 req		Rear Window Assembly			
Drawn By:	Date:	Units:	File Name:		
Daryl Furkalo	2019-08-09	Imp.	JD3E-ASM-10_OP		
Checked By:	Date:	Size:			
		B			

Index	Service Part #	File Name	Description	Qty
1	A00-0013	TEKT-0009	5MM Bushing	5
2	A00-0014	TEKT-0092	Thick Bushing	3
3	A00-0019	STEP-BOLT1-4X1	Step Bolt, 1/4" x 1", MB	1
4	A00-0020	STEP-BOLT1-4X1-1-4	Step Bolt, 1/4" x 1 1/4", MB	3
5	A00-0021	FLANGE-NUT-1-4	Flange Nut, 1/4", YD	4
6	A00-0033	315-080	Rear Wiper Shaft Grommet	1
7	A00-0043	WWF-MOTOR	WWF Wiper Motor, 1" Shaft	1
8	A00-0108	TEKT-ASM-037	WWF, Adjustable Radial Arm, 15" to 19"	1
9	A00-0339	NAPA_6-1565	Deluxe 16" WWF	1
10	J19-0001	JD3E-038	Upper Windshield Glass	1
11	J19-0006	JD3E-061-	Front Windshield Seal	1



### Notice of Confidentiality

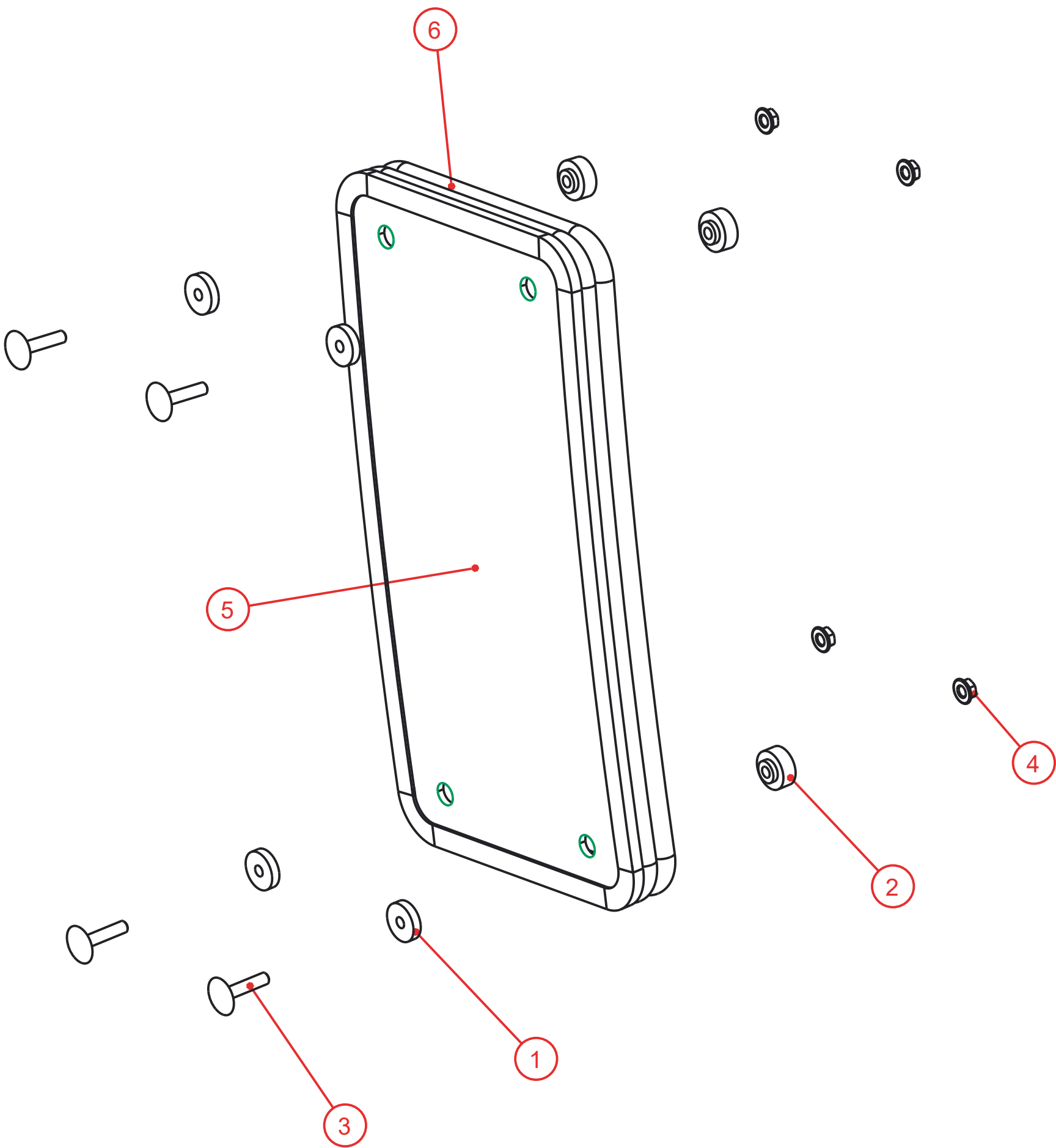
This material is property of Tektite Manufacturing Inc and is not to be used by the recipient for any purpose other than the purpose for which it was transmitted. The material remains the property of Tektite and shall be returned upon request. The material may not be reproduced or disclosed to third parties without the written consent of Tektite.

**Tolerances:**  
Unless otherwise specified  
X.X =  $\pm 1/16"$   
Angular =  $\pm 1.0^\circ$

Tektite Manufacturing Inc. 427 Buffalo Street, Winkler MB, R6W 4A8, Canada				
Req'd: 1 req	CNC:	Description: Windshield Assembly		
Drawn By: Daryl Furkalo	Date: 2019-08-09	Units: Imp.	File Name: JD3E-ASM-11_OP	
Checked By:	Date:	Size: B		



Index	Service Part #	File Name	Description	Qty
1	A00-0013	TEKT-0009	5MM Bushing	4
2	A00-0014	TEKT-0092	Thick Bushing	4
3	A00-0020	STEP-BOLT1-4X1-1-4	Step Bolt, 1/4" x 1 1/4", MB	4
4	A00-0021	FLANGE-NUT-1-4	Flange Nut, 1/4", YD	4
5	J19-0005	JD3E-039	Lower Front Window Glass	1
6	J19-0010	JD3E-062-	Lower Front Window Seal	1



SCALE 0.400

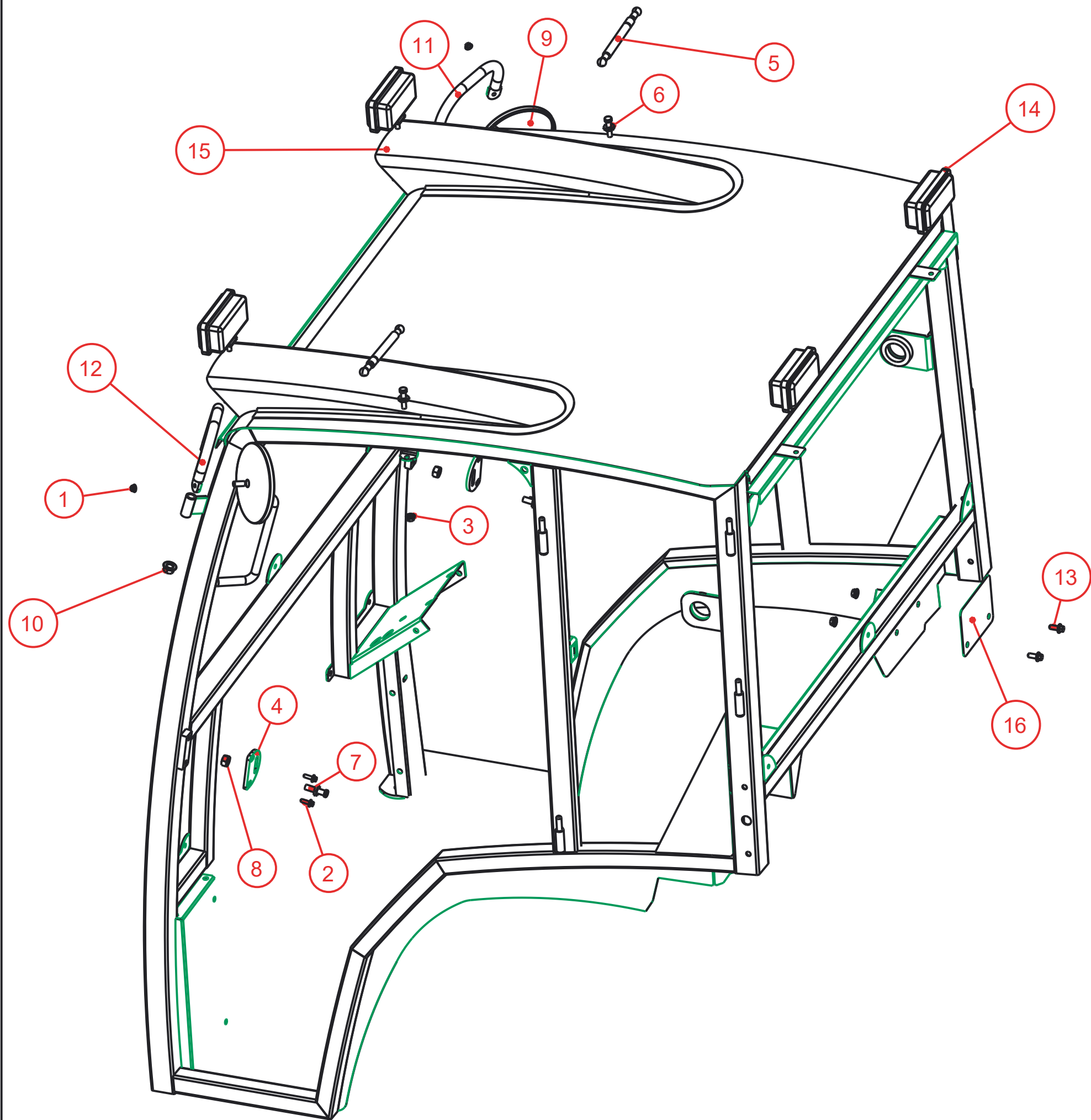
Notice of Confidentiality

This material is property of Tektite Manufacturing Inc and is not to be used by the recipient for any purpose other than the purpose for which it was transmitted. The material remains the property of Tektite and shall be returned upon request. The material may not be reproduced or disclosed to third parties without the written consent of Tektite.

**Tolerances:**  
Unless otherwise specified  
X.X =  $\pm 1/16"$   
Angular =  $\pm 1.0^\circ$

Tektite Manufacturing Inc. 427 Buffalo Street, Winkler MB, R6W 4A8, Canada					
Req'd: <b>L&amp;R</b>	CNC:	Description: <b>Lower Front Window Assembly</b>			
Drawn By: <i>Daryl Furkalo</i>	Date: 2019-08-09	Units: <b>Imp.</b>	File Name: JD3E-ASM-12_OP		
Checked By:	Date:	Size: <b>B</b>			

Index	Service Part #	File Name	Description	Qty
1	A00-0021	FLANGE-NUT-1-4	Flange Nut, 1/4", YD	2
2	A00-0023	FLANGE_BOLT_1-4X3-4	Flange Bolt, 1/4" x 3/4", YD	4
3	A00-0059	FLANGE-NUT-5-16	Flange Nut, 5/16", YD	4
4	A00-0061	TEKT-0021	Striker Mounting Plate	2
5	A00-0084	TEKT-0070	Gas Shock	2
6	A00-0085	TEKT-0069	Gas Shock Stud	2
7	A00-0101	STRIKER-PIN	Striker Pin	2
8	A00-0103	HEX-NUT-M12X1	Hex Nut, M12 x 1.0, YD	2
9	A00-0141	ROUND_MIRROR_6_INCH	External 6" Mirror	2
10	A00-0179	FLANGE-NUT-1-2	1/2" Nut	2
11	A00-0202	TEKT-ASM-009R	Right Mirror Bracket Weldment	1
12	A00-0203	TEKT-ASM-009	Left Mirror Bracket Weldment	1
13	A00-0284	FLANGE_BOLT_5-16X3-4	Flange Bolt, 5/16" x 3/4", YD	2
14	A00-0371	TEKT-0175	New LED Work Light (Blazer Intl)	4
15	A00-0389	KUBX2380-NOSTRIL	Plastic Light Nostril	2
16	J19-0018	JD3E-070	Rear Shield Cover	1
17	n/a	JD3E-ASM-09	Cab	1



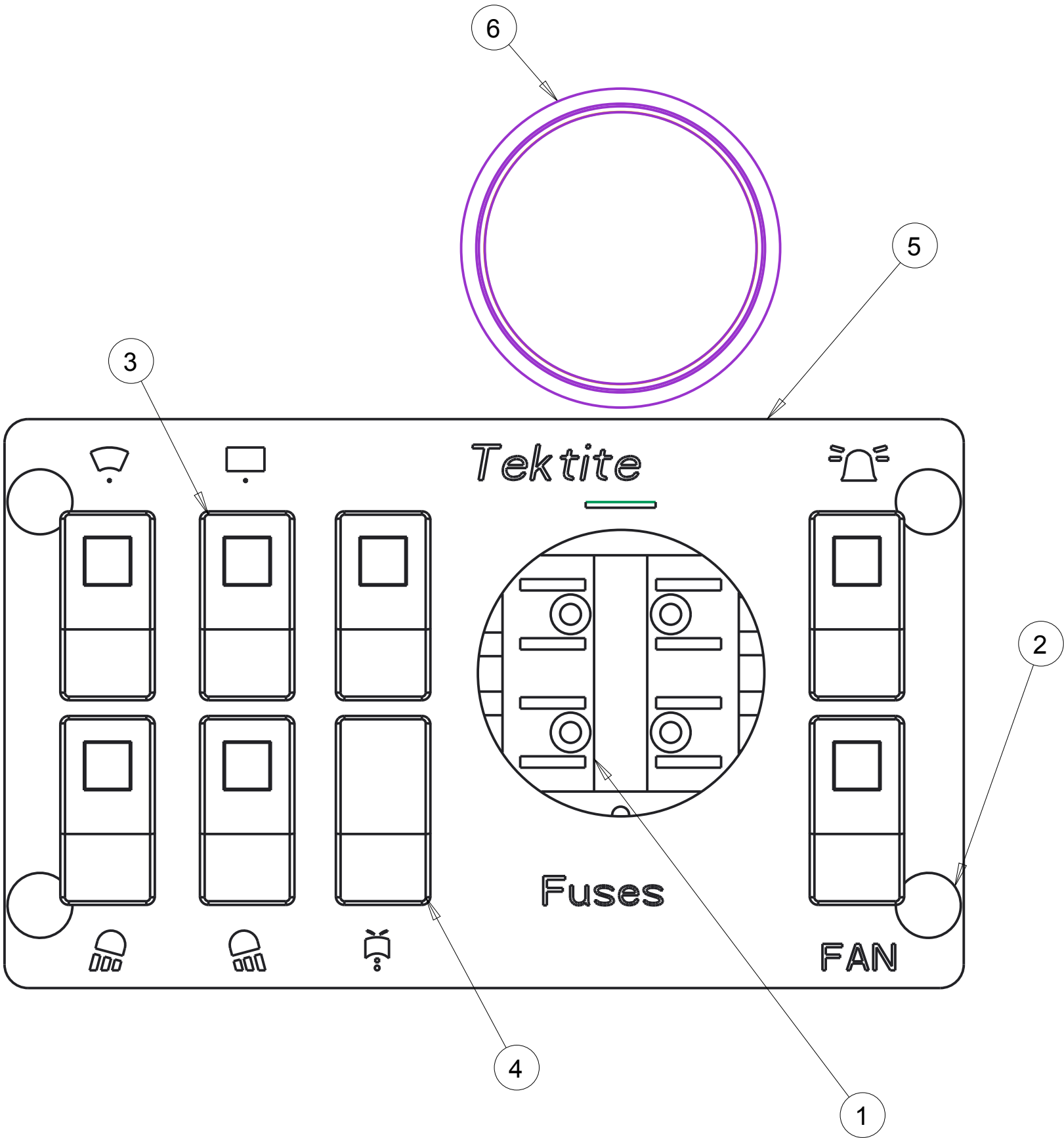
Notice of Confidentiality

This material is property of Tektite Manufacturing Inc and is not to be used by the recipient for any purpose other than the purpose for which it was transmitted. The material remains the property of Tektite and shall be returned upon request. The material may not be reproduced or disclosed to third parties without the written consent of Tektite.

Tolerances:  
Unless otherwise specified  
X.X =  $\pm 1/16"$   
Angular =  $\pm 1.0^\circ$

Tektite Manufacturing Inc. 427 Buffalo Street, Winkler MB, R6W 4A8, Canada					
Req'd:	CNC:	Description:			
1 req		Cab Accessories			
Drawn By:	Date:	Units:	File Name:		
Daryl Furkalo	2019-08-09	Imp.	JD3E-ASM-16		
Checked By:	Date:	Size:			
		B			

Index	Service Part #	File Name	Description	Qty
1	A00-0024	BUSS-15600-08-11	Power Block/Ground	1
2	A00-0055	TEKT-0019	Fir Tree Fastener	4
3	A00-0065	TEKT-ASM-005	On-Off Switch w/Lens	7
4	A00-0067	TEKT-ASM-007	Mom-Off-Mom Rocker Switch	1
5	A00-0223	TEKT-ASM-013	Steel Top Switchplate w/Decal	1
6	A00-0224	TEKT-0104	3" Plug, Steel Top	1



Notice of Confidentiality

This material is property of Tektite Manufacturing Inc and is not to be used by the recipient for any purpose other than the purpose for which it was transmitted. The material remains the property of Tektite and shall be returned upon request. The material may not be reproduced or disclosed to third parties without the written consent of Tektite.

**Tolerances:**  
Unless otherwise specified  
  
X.X = ± 1/16"  
Angular = ± 1.0°

Tektite Manufacturing Inc. 24157 Hwy 3, Box 639, Winkler MB, R6W 4A8, Canada					
Req'd:	CNC:	Description: Steel Top Switchplate Assembly			
Drawn By: Daryl Furkalo	Date: 2013-07-05	Units: Imp.	File Name: TEKT-ASM-O27		
Checked By:	Date:	Size: B			