

John Deere 2025R MY18 ROPS Cab



****shown with optional equipment**

John Deere JD2000R-001 ROPS Cab

This ROPS cab is designed and built to fit:
John Deere 2025R, model year 2018 and newer.

Designed and built by:

Tektite Manufacturing Inc:

P.O. Box 639, 427 Buffalo Street
Winkler, MB, Canada
R6W 4A8
PH: 204-331-3463
parts@tektite.ca

One-year standard product warranty provided by Tektite Manufacturing Inc.
www.tektite.ca / www.tektitecabs.com



DO NOT PROCEED FURTHER UNTIL YOU HAVE READ THE INFORMATION BELOW.

- 1) Always wear personal protective equipment.
- 2) A minimum of two people is necessary to safely install the cab.
- 3) This ROPS cab is heavy. A lift assist device such as an overhead hoist or high lift forklift is required.
- 4) Ensure your work area is well ventilated. The installation requires the starting of the tractor which will produce dangerous carbon monoxide fumes.
- 5) Read through the entire installation manual first.
- 6) Follow the installation instructions in order.
- 7) Reading the operators manual prior to using the ROPS cab.

Tektite Manufacturing Incorporated thanks you for purchasing a John Deere 2025R ROPS cab! Tektite has worked very hard to design and build this ROPS product and we hope that it provides you with many years of protection.

Tektite's products are designed to provide safe and dependable service during operation when they are properly maintained according to the instructions. Please read this installation manual carefully before installing and using this product.

The photos/illustrations provided in this manual may not provide all the detail needed and are for reference only.

All directions provided are from the reference point of the tractor seat facing the steering wheel. All left and right references are from this viewpoint.

For reference, please fill in the information below. This will assist your dealer in providing service for this product. It is advisable that this information be provided to your insurance company as well in the event that the tractor is lost or damaged.

Vehicle Model: _____

Tektite Serial Number: _____

Date of Purchase: _____

Dealer Name: _____

Parts List Standard Cab:

Mounting Parts Bag:

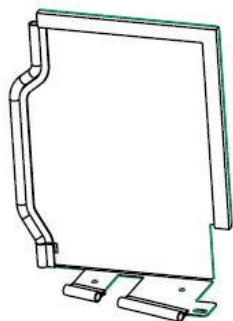
Description	Qty
Structural Washer, 1/4" thick	4
Bolt, Hex, 5/8" x 3", Gr. 8, YD	4
Nut, Flange, 5/8", Gr. 8, YD	4
Bolt, Hex, 1/2" x 4 1/2", Gr. 8	2
Bolt, Flange, 1/4" x 3/4", YD	8
Self Tap Screw, #8 x 1/2"	3
Fir Tree Fastener	8
Nut, Flange, M8	2
Bolt, Hex, M8 x 20, Gr. 8.8	4
3/8" Loom, 8" Long	2
NO LOADER Spacer DOM Tubes (1 1/4" length)	6
Flange Bolt, M16 x 70, Gr. 10.9 (NO LOADER ONLY)	6
Wire Loop, 1/4"	2
Wire Loop, 3/8"	2
Zip Ties, Short	6

Loose Components:

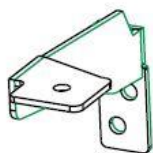
Description	Qty
Extruded Panel Nut, 1/4" (pre-installed)	12
Chassis Isolator, Rubber, 5/8" (pre-installed)	4
Front Mounting Brackets	L&R
Fuel Surround Shield	1
Under Seat Floormat	1
Floor mat, operator platform	L&R
Left Lower Kick Panel	1
Right Lower Kick Panel	1
Hood Shield (foam, rubber pre-installed)	1
Under Seat Shield	1
Rear Lower Shield (3" cap w/seal pre-installed)	1
UKC-X Foam, Open Cell	6 FT
NDAX Foam, Closed Cell	18"
Knob, 4-Lobe, 1/4" x 1" (pre-installed w/hood shield)	4

Parts List Heater Components:

Description	Qty
Straight fitting, 3/8NPT x 3/8" barb	2
Straight fitting, 16MM male x 3/8NPT female	1
HS-6 hose clamps	2
Zip Ties, Long	8



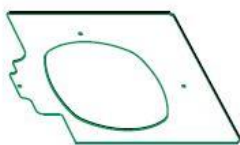
Right Lower
Kick Panel



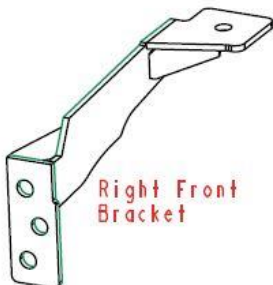
Left Front
Bracket



Left Lower
Kick Panel



Fuel Surround
Shield



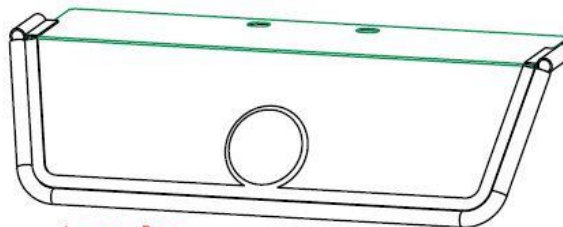
Right Front
Bracket



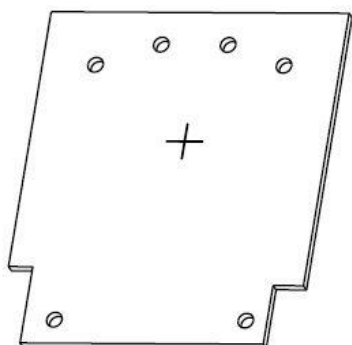
Hood Shield



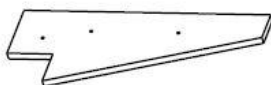
Under Seat
Shield



Lower Rear
Shield



Under Seat
Floormat



Left Pedal
Floormat



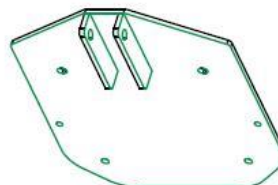
Right Pedal
Floormat



No Loader
Spacers (6)
(if ordered)



Seat Bracket Lower
(TLB Cabs Only)



Seat Bracket Upper
(TLB Cabs Only)

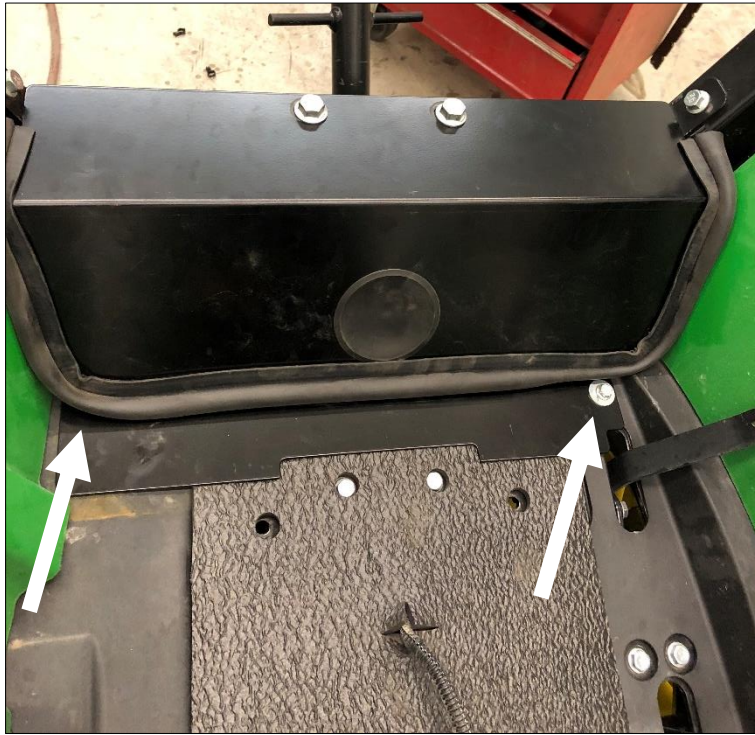
Standard Cab Installation Instructions:

Prior to starting cab installation, park tractor in a well-ventilated area that has access to overhead hoist, or at minimum can have a fork lift raise cab over tractor. Disconnect battery ground on tractor.

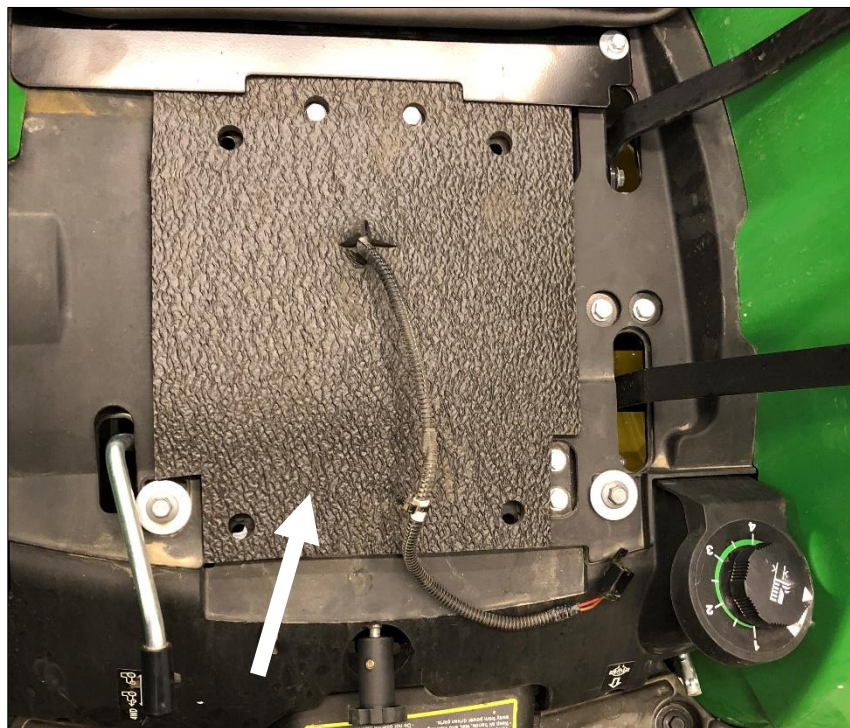
- Take the provided open cell foam and install on the outside of the plastic fenders and seat plate. (photos from Deere 1-series)



- Disconnect the seat harness plug. Remove the clevis pin that allows seat pivot, and then remove the seat from the seat track assembly. Un-bolt the seat track assembly from the tractor, the two-step process will make seat removal easier.
- Take the provided under seat shield and position at the rear of the seat plate. Un-bolt and remove the two M6 fasteners and place shield over plastic seat plate, with notch around oil fill cap. Fasten into place with factory M6 bolts.



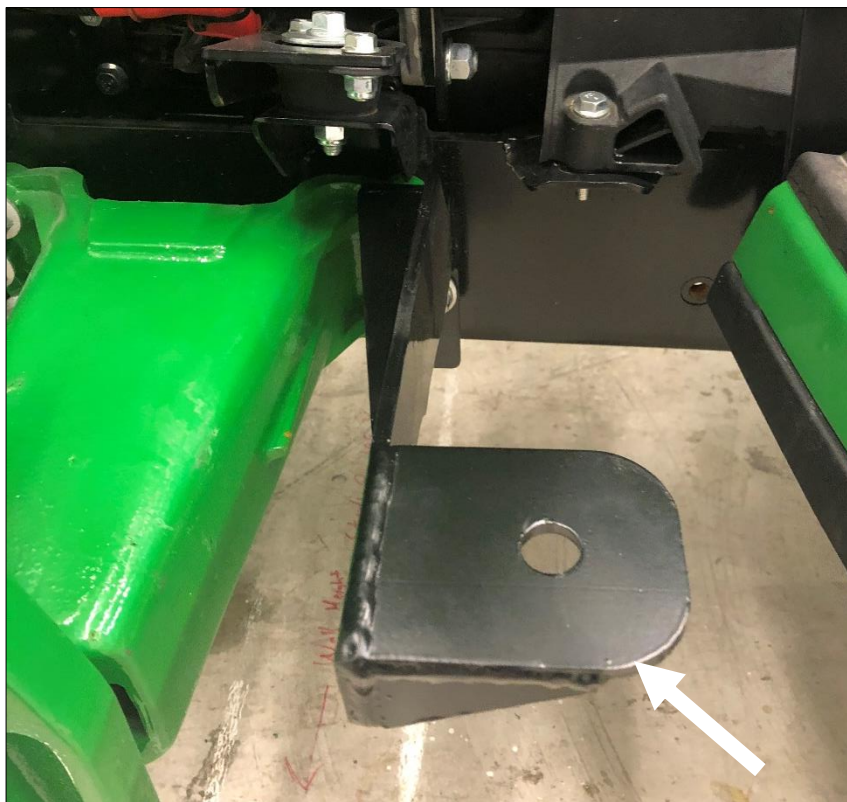
- Take the provided under seat floor-mat piece and position into cavity under the seat between the steel panel just installed and the two side plastic panels.



- Re-install the seat track assembly.
- Re-install the seat and clevis pin.
- Take the rear cab shield and position on crossmember between lower 2-post ROPS members. Remove the two M12 fasteners, then slide shield into position. Use factory bolts to fasten shield into place.



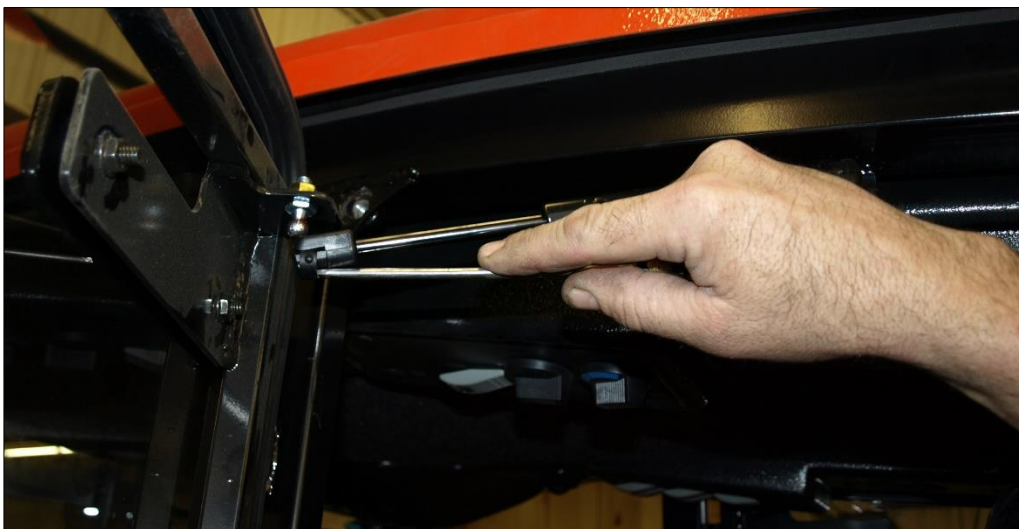
- Un-bolt upper hoop of 2-post ROPS and remove from tractor.
- If tractor is not equipped with a front-end loader, no loader spacers are required behind the front cab brackets.
- If loader is present, remove the rear three fasteners attaching loader to sub-frame first. Loosely fasten left front bracket at this point with the factory loader bolts. If loader is not present, use the no loader spacers and the provided M16 x 70 flange bolts.



- Repeat for the right front bracket.



- Un-hook the gas shock and remove both doors from the cab. To remove gas shock on the left cab door, slide a flat screwdriver underneath the small clip on the end cap that needs to be pulled UP to pop the shock off the ball stud. ***The shock will release EXTREMELY easily when this is accomplished.*** Lift the door assembly straight up and off the cab and put aside for now.

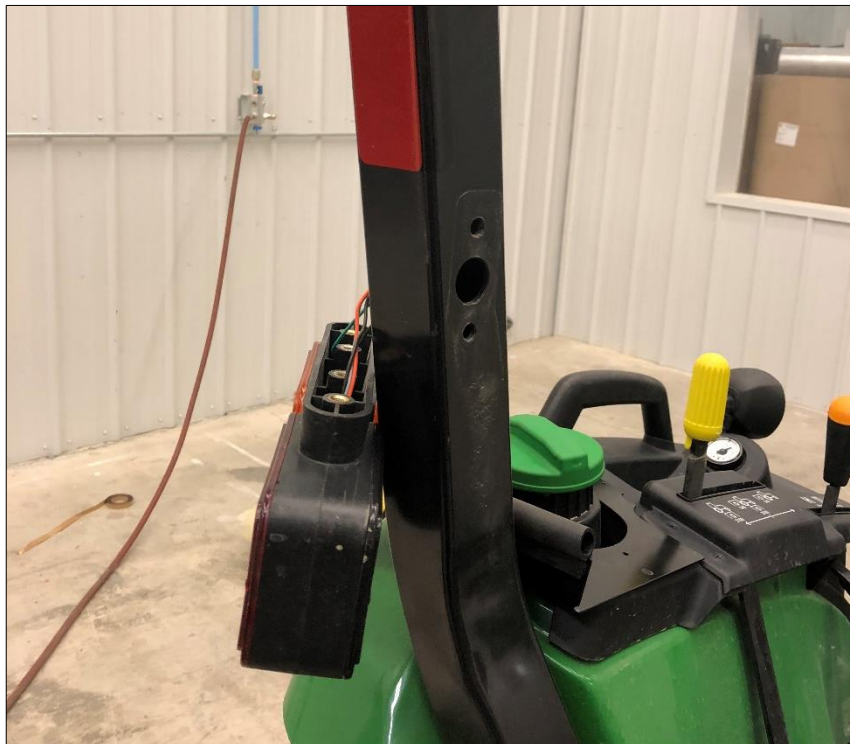


- Remove the cab hood shield at this point.

- Take the provided fuel surround shield and position it over the fuel cap area, with the notch aligning with the inner protrusion on the PTO selector cover. Use provided #8 x ½" screws to fasten into plastic surround.



- Un-bolt and remove left 4-way flasher light from the lower 2-post ROPS, wire harness will need to be carefully pulled out a bit to provide more cable for relocation.



- Repeat for the right 4-way flasher light.
- Un-bolt and remove the mount for the SMV sign from the left side of the 2-post ROPS. Take the provided M8 flange nuts and fasten SMV sign mount to the right side of the 2-post ROPS on the inside with the factory M8 bolts used to originally fasten flasher lights to the 2-post ROPS.



- Take the provided lift bolts, $\frac{1}{2}$ " x 4 $\frac{1}{2}$ " hex bolts, and fasten to the cab. There are weld nuts located behind the tab at the top rear of the door opening. Install lift bolts on both sides. Use a lift strap or chain to connect both lift bolts to an overhead hoist or fork lift.
- Un-bolt the cab from the shipping pallet and lift straight up. Carefully position cab directly over the tractor.
- Lower cab straight down onto the tractor until the rubber starts to touch the tractor and the front isolator is on the front mounting bracket plate. The rear isolator will use the bottom fastener on the 2-post ROPS plate. If necessary, the lower 2-post ROPS section may need to be clamped together if the spacing is too tight for the isolators. You will need to slide the rear of the cab into position first when lowering cab down.



- For the front isolator fasteners, use the provided 5/8" x 3" hex bolt, 1/4" heavy flat washer and flange nut in that order from above. The rear isolator uses the same order sequence. Get ALL four fasteners started before doing any final tightening.



- The 5/8" fasteners can receive 205 ft-lbs of final torque. Tighten all isolators first, with the front brackets last.
- Un-hook the lift strap or chain and remove. Remove the lift bolts, and clamps on 2-post if they were needed.
- Open tractor hood and remove the hood side panels. Un-bolt and remove all engine guard plates.
- Route the main power wires towards the starter on the left side of the engine.

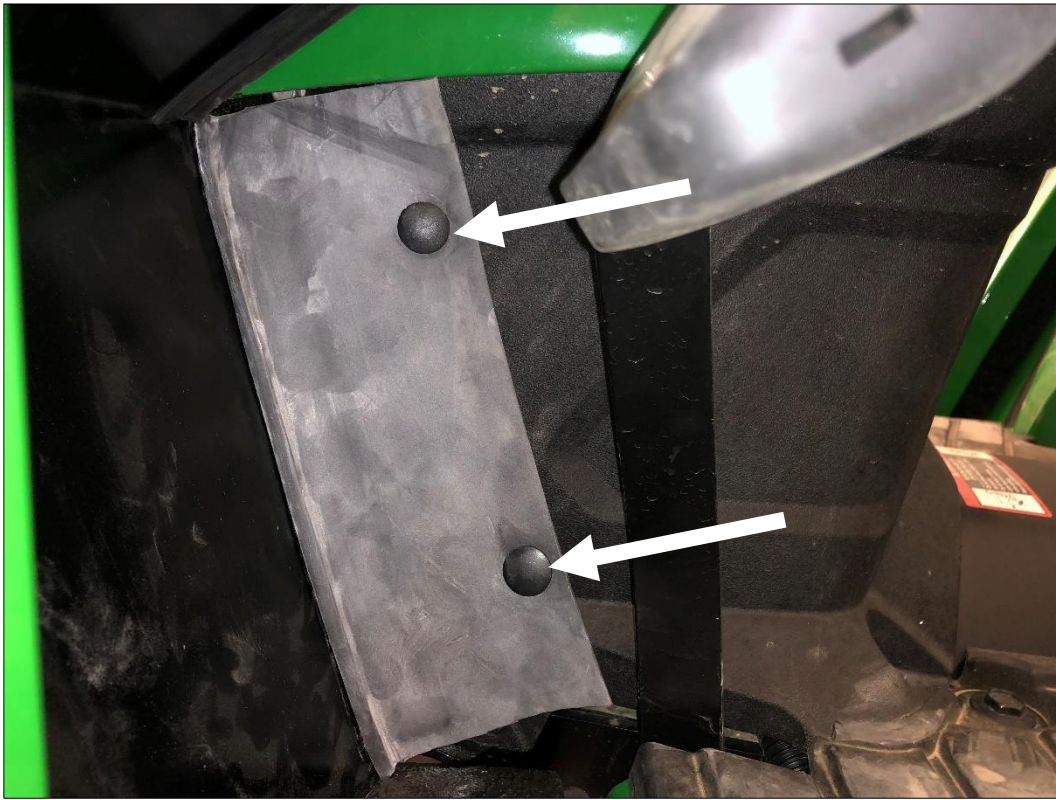
- The red wire will connect to constant power on the starter, shorten wire if necessary. Use provided $\frac{1}{4}$ " loop, solder loop to red wire, and then connect to the main power location shown below.



- The black wire will connect to a ground bolt on the starter, shorten wire if necessary. Use the provided $\frac{1}{4}$ " loop, solder loop to black wire, and then connect to the ground bolt shown in the previous photo.
- Take the lower left pedal shield removed earlier, and re-install onto cab. Ensure tight seal to tractor belly, then fasten with the $\frac{1}{4}$ " x $\frac{3}{4}$ " flange bolts provided.



- The inner wide flap rubber needs to be fastened to the plastic shroud on tractor. Position for good seal and mark center holes. Carefully drill two 3/16" holes. Use two provided fir tree fasteners to fasten to tractor. Cut the wide flap rubber to get a good seal onto tractor.



- Take the left pedal floor mat and 3 fir tree fasteners. Position onto left pedal shield, aligning holes with holes in the cab sheet-metal. Install provided fir tree fasteners.



- Take the lower right pedal shield removed earlier and re-install onto cab. Ensure tight seal to tractor belly, then fasten with the $\frac{1}{4}$ " x $\frac{3}{4}$ " flange bolts provided.



- Take the right pedal floormat pieces and position on the right pedal shield. Use provided fir tree fasteners to attach to cab shielding.
- Take the left rear flasher light removed earlier and fasten onto the plate at the left rear of the cab. Slide the harness into the cut-out area in plate, fasten to plate with provided M8 x 20 hex bolts.
- Use the provided 3/8" loom to tidy up the wiring.



- Take the right rear flasher light removed earlier and fasten onto the plate at the right rear of the cab. Slide the harness into the cut-out area in plate, fasten to plate with provided M8 x 20 hex bolts.



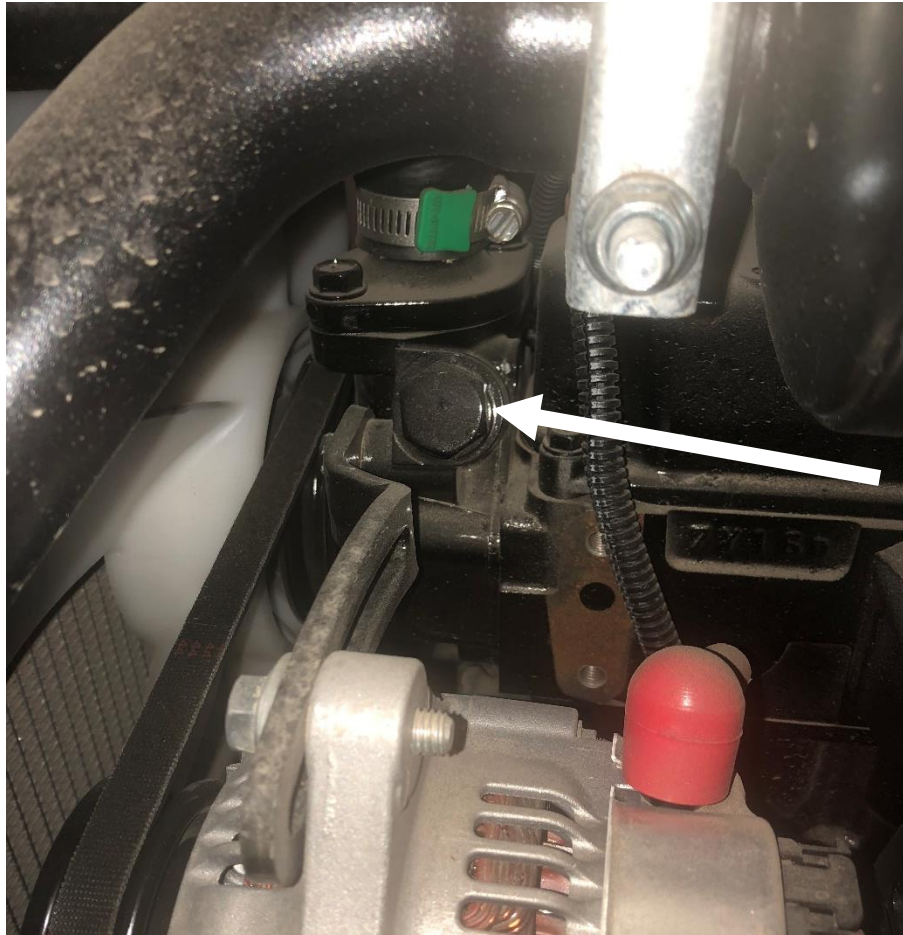
- Use the provided 3/8" loom to tidy up the wiring.

For the heater installation, proceed with following steps.

- Drain the engine coolant.
- On the right side of the engine, remove the air filter to provide better access.
- Locate the plug shown below, and using an allen key, remove the plug.



- If the finger guard is in the way remove, un-bolt and remove from the tractor. Take the provided straight 3/8NPT x 3/8" barb fitting, use silicone seal on the threads to prevent water leaks, and screw into open port.
- Locate the large metric plug on the LEFT side of the engine. Remove the plug and install the provided 16MM fitting into the port. Use silicone on the threads of the fitting.



- Take the remaining straight fitting and install into the end of the metric straight adapter just installed. Ensure there is silicone on the threads of the fitting.
- Route the hoses from the right side of the cab up into the engine bay, keeping away from hot elements and moving parts.
- Route towards the fitting on the right side first, then cut hose. Connect onto fitting, securing with the provided HS-6 hose clamp.
- Route the remaining hose to the other fitting, cutting hose as needed. Connect onto fitting, using remaining HS-6 hose clamp.
- Ensure ALL fittings are tight, hoses do not touch hot or moving parts on tractor, secure with provided zip ties.
- Re-fill the engine antifreeze.
Start the tractor and turn the heater fan on.
- Proceed with purging air from the cooling system by running at high RPM and cycling the throttle in order to break air locks. If necessary, run with engine coolant in a funnel in the radiator cap location so that you can see coolant being sucked into the system.
NOTE: The air at the louvers should be VERY hot once the system is completely purged.

Ensure a lot of fresh air ventilation when running the tractor, carbon monoxide is invisible and deadly.

- Cab heater installation is now complete.
- Re-install the tractor side panels.
- Close the tractor hood.
- Take the cab hood shield removed earlier and re-install with the hardware provided.



- To ensure a proper seal, use black silicone sealant around all small open cracks between the cab weather stripping and tractor components.

NOTE: in order to open the hood, the cab hood shield must be removed.

John Deere 2025R MY18 ROPS Cab



** Shown with optional equipment

John Deere JD2000R-001 ROPS Cab

This ROPS cab is designed and built to fit:
John Deere 2025R, model year 2018 and newer.

Designed and built by:

Tektite Manufacturing Inc:
P.O. Box 639, 427 Buffalo Street
Winkler, MB, Canada
R6W 4A8
PH: 204-331-3463
parts@tektite.ca

One-year standard product warranty provided by Tektite Manufacturing Inc.
www.tektite.ca / www.tektitecabs.com



DO NOT PROCEED FURTHER UNTIL YOU HAVE READ THE INFORMATION BELOW.

- 1) Always wear personal protective equipment.
- 2) A minimum of two people is necessary to safely install the cab.
- 3) This ROPS cab is heavy. A lift assist device such as an overhead hoist or high lift forklift is required.
- 4) Ensure your work area is well ventilated. The installation requires the starting of the tractor which will produce dangerous carbon monoxide fumes.
- 5) Read through the entire installation manual first.
- 6) Follow the installation instructions in order.
- 7) Reading the operators manual prior to using the ROPS cab.

Tektite Limited Warranty

Tektite Manufacturing Inc. ("Tektite") warrants to the original purchaser (the "Claimant"), that Tektite products will be free from defective materials or workmanship, under normal use and service, for a period of (1) full year from the original invoice date. Tektite's liability under this Limited Warranty is limited to the repair or (at the discretion of Tektite) the replacement of those components of its products, which were manufactured by Tektite that are defective in materials or workmanship. Tektite shall have no liability under this Limited Warranty unless Tektite is notified of the defect during the stated Warranty Period.

Limitations and Exclusions: Tektite has no responsibility to a Claimant under this Limited Warranty or on any other basis for any of the following:

- a) defects caused, in whole or in part, by accident or misuse, negligence or failure to maintain the product or component;
- b) products or components sold to a customer on an "as is" basis;
- c) wiper blades, light bulbs, fuses, clear vinyl or other consumables;
- d) glass where the point of failure has not been preserved intact and delivered to Tektite for analysis of the cause of the failure;
- e) products or components which have been modified after shipping from Tektite to its customer;
- f) transportation charges for returned, repaired or replacement items;
- g) defects that are subject of a Tektite initiated recall where the Claimant fails to comply with the terms of the recall notice that comes to the attention of the Claimant;
- h) components of Tektite products that are manufactured by third parties (Tektite's only obligation in relation to such components shall be to accord to the Claimant the benefit of any transferable warranty accorded to Tektite by third party manufacturer);
- i) defects in workmanship or materials in products or components that are repaired or replaced by Tektite unless Tektite is notified of the new defect within the Warranty Period that applied to the original product or component that has been repaired or replaced;
- j) defects that result, in whole or in part, from inadequate engineering or specifications provided to Tektite by its customer;
- k) any actual or alleged deficiency in technical or engineering services or advice provided by Tektite to its customer whether provided for valuable consideration or otherwise;
- l) consequential damages, or any other damages whether foreseeable or not, resulting from the defect or any delay in remedying the defect;
- m) any breach or alleged breach of any implied warranty of merchantability or fitness for particular purpose of use;
- n) defects or part failure due to misuse or failure to follow recommended cab installation procedures; and
- o) travel expenses, including mileage.

This Limited Warranty expresses the entire obligation of Tektite, its officers, directors, agents and employees, to its customer or any Claimant in respect of any defect in workmanship, or materials of any product or component sold or manufactured by Tektite whether on grounds of breach of contract, negligence or other tortious liability, breach of express or implied warranty or other basis in law of any jurisdiction.

Acceptance by a customer of delivery of products of Tektite constitutes acceptance of this Limited Warranty in lieu of all other warranties express or implied including without limitation all implied warranties of merchantability or fitness for particular purpose or use and constitutes acceptance by customer of the exclusions and limitations of the liability of Tektite set out above. Once received, the cab should have ALL exterior cardboard, Styrofoam wrapping removed for immediate inspection of product to ensure that no damages have occurred during transportation. Outer coverings should stay off the cab and the cab be stored indoors in a controlled environment. The warranty card must be completed and returned to Tektite.

Warranty claims should be reported to parts@tektite.ca. A warranty claim form and instructions will be provided at this time. Warranty work not pre-authorized by Tektite may not be covered by this warranty agreement. Labor rate and time allowances are fixed by Tektite. Approved warranty claims will be issued in the form of credits applied to customer account.

Safety Precautions

Safety First

Read these instructions carefully. It is essential that you read the instructions and safety regulations before you attempt to assemble or use the features that are on this cab/ROPS.

Danger: Indicates an immediate hazardous situation which, if not avoided, will result in death or serious injury.

Warning: Indicates a potentially hazardous situation which, if not avoided, may result in death or serious injury.

Caution: Indicates a potentially hazardous situation which, if not avoided, may result in minor or moderate injury.

Important: Indicates that cab or property damage may result if instructions are not carefully followed.

NOTE: All products are designed to give safe, dependable service if they are operated and maintained according to instructions. It is the owner's responsibility to be certain anyone operating this product reads this manual, and all other applicable manuals, to become familiar with this cab and all safety precautions. Failure to do so could result in serious personal injury or cab damage. If you have any questions, consult your dealer. Read and understand this manual before operation.

NOTE: A safe operator is the best assurance against accidents. All operators, no matter how experienced they may be, should read this operator manual and all other related manuals before attempting to operate features in this cab/ROPS and operate the base tractor. Please read the following section and pay particular attention to all safety recommendations contained in this manual and those labelled on the cab and on the tractor.

General Safety

1. Never let an unqualified or untrained driver operate the tractor.
2. Keep a fire extinguisher, with ABC rating securely fastened in the ROPS. Maintain it and be familiar with its use.
3. Do not carry passengers.
4. Never operate the tractor in a closed building for a prolonged period. Ensure adequate ventilation is present, as engine exhaust fumes are poisonous and can kill.
5. Always keep sleeves, jackets or other loose clothing relatively tight and belted. Loose clothing may catch on moving parts and result in severe personal injury or death.
6. Provide a first-aid kit, securely attached inside of the ROPS for use in case of accident.
7. Never jump from the tractor. There is a danger of tripping or falling on protruding parts.
8. Use steps and hand holds when mounting and dismounting the tractor, or for servicing components too high to reach from the ground.
9. When seated in the ROPS, fasten seat belt before starting the engine. A proper seat belt must be worn at all times when using a ROPS.
10. Safety devices and shields are intended to protect operators from injury or death. Under no circumstances should they be modified, disabled or removed.

Operating Safety

1. Always operate the tractor controls while sitting in the operator's seat.
2. Lock seat in position and buckle seat belt before operating the tractor.
3. Avoid abrupt sharp turns at high speeds.
4. On sloped terrain, do not make sharp turns as machine stability could be compromised.
5. Operate the tractor smoothly, avoid abrupt starts and stops.
6. Keep all shields in place when operating the tractor.
7. Do not operate the tractor when you are tired, sick, or impaired.
8. Never operate the tractor in confined areas; visibility next to the tractor is reduced. Injury to bystanders or damage to the ROPS or equipment may result.

Safety

Carefully review the procedures given in this manual and the tractor operator's manual with all operators annually. It is important that all operators become familiar with, and follow safety precautions. Operating instructions must be given to everyone using the tractor before operation and at least once yearly thereafter in compliance with OSHA Regulations 1928.57 (United States).

Safe Operation on Rough Terrain

1. Drive the tractor slowly on hillsides and curves to eliminate the danger of tipping. Avoid slopes which are too steep for safe operation. Avoid sharp uphill turns.
2. Always drive slowly enough over rough ground or obstructions. Drive at speeds slow enough to ensure your safety.
3. When driving out of a ditch, gully, or up a steep hillside, engage the clutch slowly. Avoid sharp uphill turns.
4. When descending steep grades, select a sufficiently low gear to maintain control with minimum use of braking.
5. Use caution when driving near the edge of a ditch or gully. It may cave in, causing the tractor to roll over.
6. Be alert when operating near trees, slopes and around obstructions. Tree branches can cause damage to ROPS components.

Maintenance Safety

1. Remove mud, crop residue, chains, and tools from steps and operator's platform. They may interfere with pedal operation or entry/exit from tractor.
2. When servicing components are too high to reach from the ground use steps and handholds. Do not use fenders or shields that are not designed as steps.

Safe Highway Operation

1. Before operating the tractor on, or near, public roadways check with your local authorities for any local regulations that will affect you.
2. Equip towed implements with slow moving vehicle (SMV) signs when traveling on public roads.
3. Install additional lights on implement rear to safeguard against rear end collisions.
4. Use hazard warning flashers as required by law when transporting or driving on public roads. If the tractor had warning flashers removed when mounting the ROPS, they must be replaced prior to operation on public roads.
5. Keep to the right, yielding right-of-way traffic, especially if pulling implements. Pull off the road and stop to allow motorists to pass. Drive on the road shoulder, if permitted by law.
6. Use extreme caution when pulling heavy loads at road speeds. Avoid hard application of the tractor brakes at high speed.
7. Always drive slowly near curbs, approaches or ditches.
8. If equipped, ensure headlights are aligned so they will not blind the operators of oncoming vehicles. If the tractor is not equipped with turn signals and law requires them, install them prior to operating on or near public roads.
9. Use your turn signals, checking for traffic well in advance of turning. If the tractor is not equipped with turn signals and law requires them, install them prior to operating on or near public roads.

Safety Decals

1. Keep decals clean. Remove dirt with a wet clean cloth when necessary.
2. Replace safety decals if destroyed, missing, painted over or unreadable. If any safety decals are covered or obscured when the ROPS is mounted, it is recommended that you purchase replacement decals from the tractor manufacturer. Mount them in a readable location at, or near, their original location before operating the tractor.
3. New ROPS decals and tractor decals are available from your tractor dealer.

ROPS Safety

1. Install the ROPS in accordance with Tektite mounting instructions. Failure to do so may affect the ROPS ability to withstand a roll over.
2. If the ROPS is subjected to alteration, structural damage or involved in an over turn accident, the entire structure must be replaced. Failure to do so may result in injury or death in the event of a roll over.
3. If the tractor is not equipped with seat belts, purchase approved seat belts from the tractor manufacturer or Tektite prior to operating the tractor.
4. Always fasten seat belts prior to operating the tractor.
5. Always operate the tractor from the operator's seat.
6. Remove mud, crop residue, chains and tools from steps and operator's platform. They may interfere with pedal operation or entry/exit from the tractor.
7. Remove all loose chains, tools, and equipment from the operator's platform. Failure to do so may cause injury or death in the event of a roll over.
8. Do not install the ROPS on a tractor model that the ROPS is not designated for (compatible tractor designations are printed on the ROPS serial number plate). The ROPS is designed specifically for individual models to ensure ROPS requirements will be met. Installing the ROPS on a non designated tractor may result in injury or death.

Emergency Exits

The ROPS cab has two doors. Either one can be used during an emergency.

Operating Instructions

Important

The following section locates, identifies, and briefly describes the functions of all cab controls. All operators should familiarize themselves with control location and function prior to operating the tractor. Failure to do so may result in unsafe operation of the tractor and possible injury or death to operators and bystanders.

There is one switch plate located in the cab. The following switches are available, and their functionality is described.



Cab Switch Plate

1. Front Wiper Rocker Switch (standard)

Low position: Off

High position: On

Note: indicator light activates when wiper is on.

2. Rear Wiper Rocker Switch (not available on all models)

Low position: Off

High position: On

Note: indicator light activates when wiper is on.

3. Front Work Light Rocker Switch (standard)

Low position: Off

High position: On

Note: indicator light activates when work lights are on.

4. Rear Work Light Rocker Switch (optional)

Low position: Off

High position: On

Note: indicator light activates when work light is on.

5. Washer Momentary Switch (Front and Rear optional)

Low position: On

Mid position: Off

High Position: On

6. Beacon Rocker Switch (optional)

Low position: Off

High position: On

Note: indicator light activates when work lights are on.

7. Water Heater Fan Rocker Switch (standard)

Low position: Off

High position: On

Note: indicator light activates when heater is on.

Standard and optional features are individually fused, and the fuses can be accessed behind the plug in the middle of the switch-plate.

Cab Circuit Protection

The Tektite ROPS cab is wired to provide maximum protection against individual circuit overload. All optional components are fused internally behind the cab switch plate. Cab wiring is direct to the tractor battery. DO NOT leave options activated when tractor is not running as battery run down can occur.

Please note: Tektite does have a key switch power option to provide maximum protection against accidental battery rundown and circuit overload. A relay is ignition activated and prevents the operator from accidentally leaving fan motors, lights on after turning the tractor off and leaving for the day. A circuit breaker is provided to prevent the cab electrical components from drawing more power than they should be able to from a dead short. This option can come with your cab if selected or field installed at a later date.

John Deere 2025R ROPS Cab

The John Deere 2025R ROPS Cab is designed to provide ROPS protection along with reasonable winter weather protection. The cab design for this model features glass windows at all window locations.

If you are going to be running the tractor with the cab on during the summer months, un-hook the gas shocks on each door, and then lift the doors off of the pin hinges.

After your ROPS Cab has been installed:

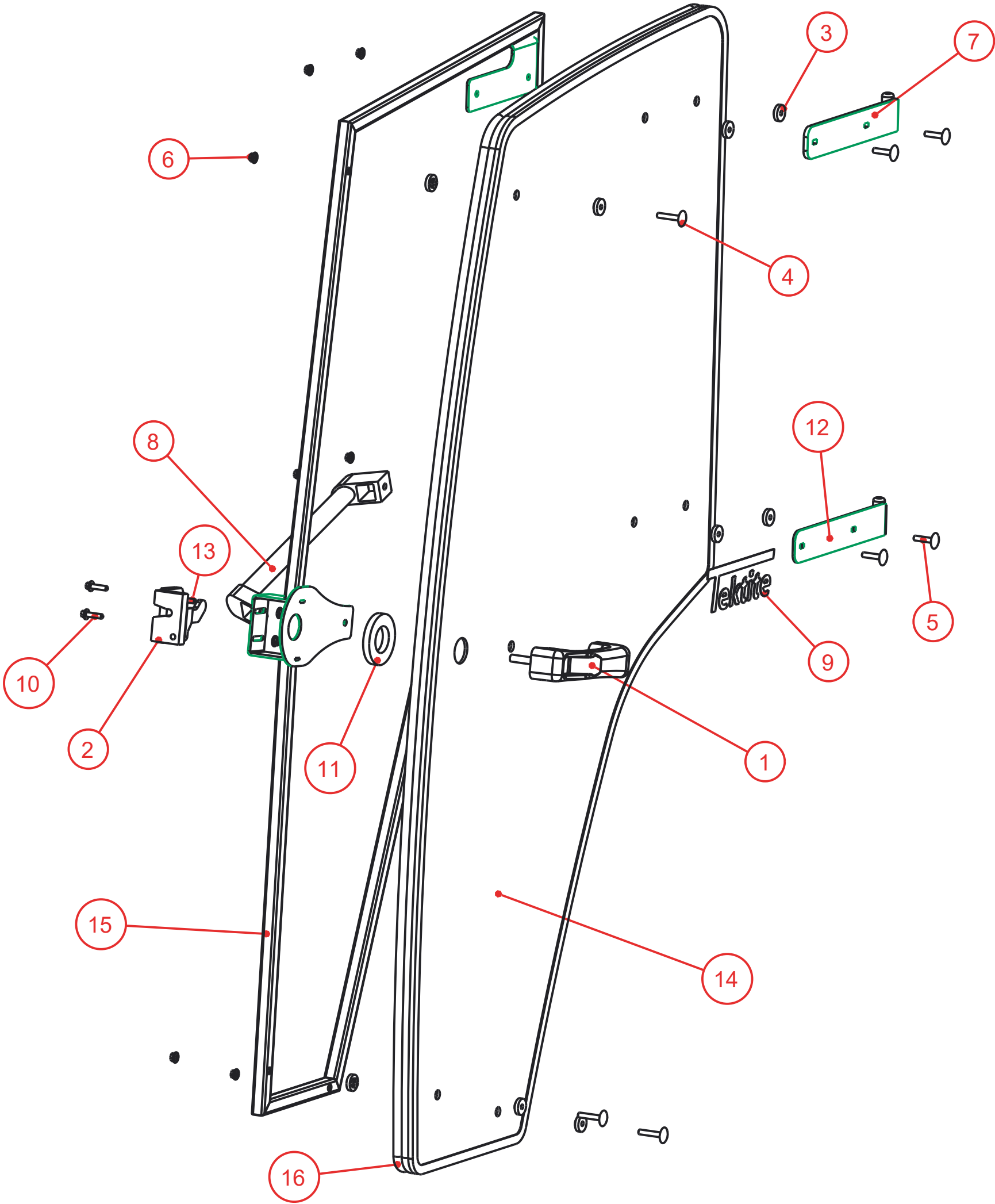
Before starting a tractor equipped with a Tektite ROPS cab:

1. Clear the operator platform of all tools. Tools left in or around the ROPS and tractor can cause operator interference which could lead to bodily injury and/or damage the machine.
2. Inspect the ROPS and tractor to ensure all bolts are tight and re-tighten if required.
3. Ensure that all pedals, levers, and controls have adequate clearance for normal operation.
4. Ensure that all electrical components of both the ROPS and tractor operate normally.
5. Ensure your door latches properly onto the striker pin. Immediately after installation, the ROPS frame may flex slightly from installation, and the door latch will need to be re-aligned for proper operation. Loosen the striker pin, striker mounting plate and door latch as necessary to get a proper alignment of the door striker.

Service Parts Breakdowns:

Following are parts breakdowns for components that may require service parts replacement during the life of the ROPS. If you require replacement parts, please contact the dealer that you purchased the ROPS from and indicate which parts you require.

Index	Service Part #	File Name	Description	Qty
1	A00-0001	DLP-HANDLE	Outside Push Button Handle	1
2	A00-0002	LEFT-LATCH	Suicide Door Left Latch	1
3	A00-0013	TEKT-0009	5MM Bushing	15
4	A00-0018	STEP-BOLT1-4X1-1-2	Step Bolt, 1/4" x 1 1/2", MB	3
5	A00-0020	STEP-BOLT1-4X1-1-4	Step Bolt, 1/4" x 1 1/4", MB	4
6	A00-0021	FLANGE-NUT-1-4	Flange Nut, 1/4", YD	9
7	A00-0039	TEKT-ASM-001	Left Door Hinge Weldment, Upper	1
8	A00-0040	REID-RST-160-RST-163	Grab Handle	1
9	A00-0041	TEKTITE-DECAL	Tektite Cab Decal - Solid White	1
10	A00-0118	FLANGE_BOLT_1-4X1	Flange Bolt, 1/4" x 1", YD	2
11	A00-0177	TEKT-0068	Handle Washer Spacer	1
12	A00-0228	TEKT-ASM-029	Left Door Hinge Weldment, Lower	1
13	A00-0295	FLANGE_BOLT_M6X30	Flange Bolt, M6x30, YD	1
14	J18-0001	JD2025R-044	Door Glass	1
15	J18-0006	JD2025R-ASM-10	Left Door Frame Weldment	1
16	J18-0012	JD2025R-059-	Door Weatherstripping	1



Tektite Manufacturing Inc.
24157 Hwy 3, Box 639, Winkler MB, R6W 4A8, Canada

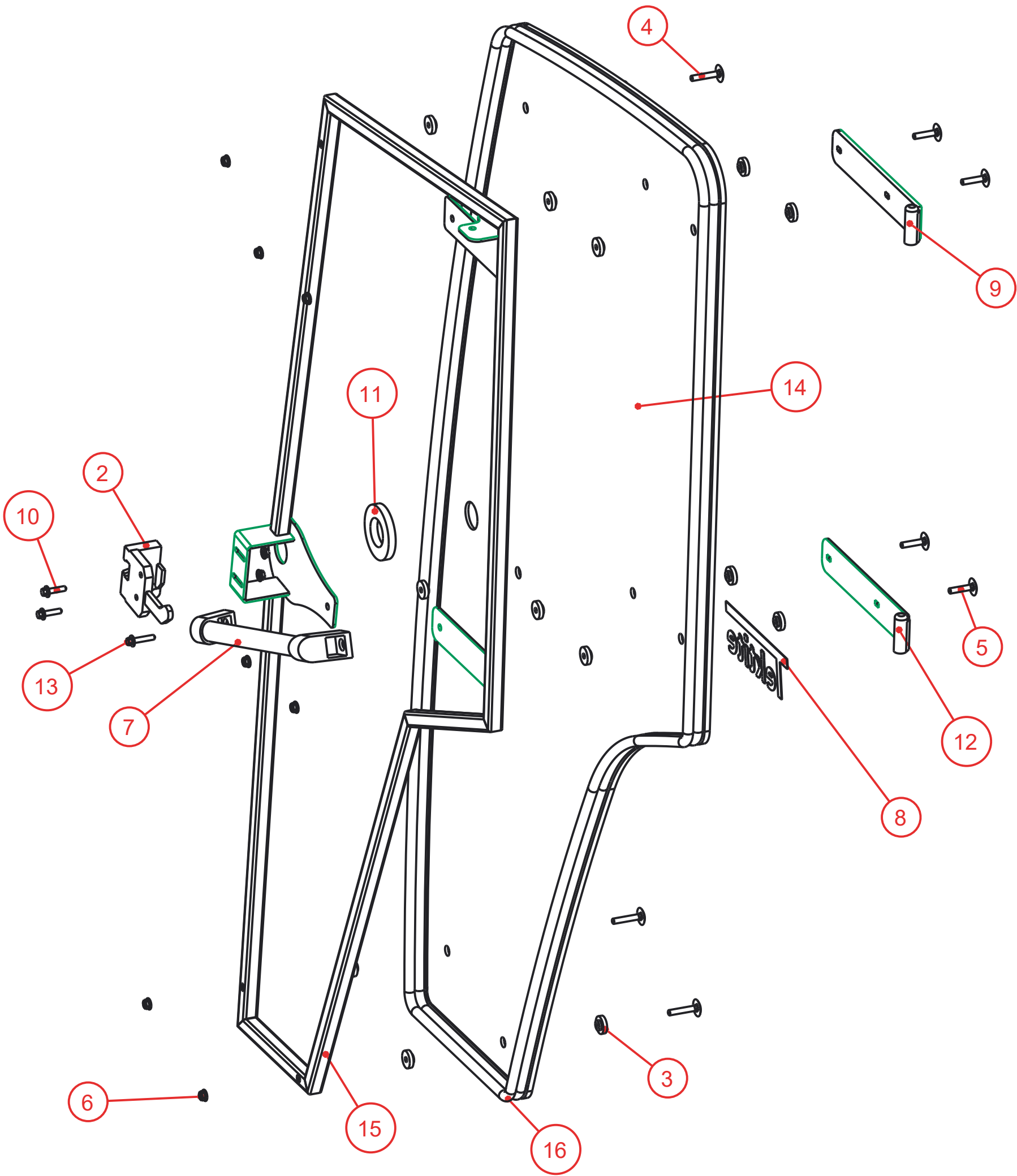
Notice of Confidentiality

This material is property of Tektite Manufacturing Inc and is not to be used by the recipient for any purpose other than the purpose for which it was transmitted. The material remains the property of Tektite and shall be returned upon request. The material may not be reproduced or disclosed to third parties without the written consent of Tektite.

Tolerances:
Unless otherwise specified
X.X = ± 1/16"
Angular = ± 1.0°

Req'd: 1 req					
CNC:		Description: Left Door Assembly			
Drawn By: <i>Daryl Furkalo</i>		Date: 2018-07-18		Units: Imp.	File Name: JD2025R-ASM-07_OP
Checked By:		Date:		Size: B	

Index	Service Part #	File Name	Description	Qty
1	A00-0001	DLP-HANDLE	Outside Push Button Handle	1
2	A00-0003	RIGHT-LATCH	Suicide Door Right Latch	1
3	A00-0013	TEKT-0009	5MM Bushing	15
4	A00-0018	STEP-BOLT1-4X1-1-2	Step Bolt, 1/4" x 1 1/2", MB	3
5	A00-0020	STEP-BOLT1-4X1-1-4	Step Bolt, 1/4" x 1 1/4", MB	4
6	A00-0021	FLANGE-NUT-1-4	Flange Nut, 1/4", YD	9
7	A00-0040	REID-RST-160-RST-163	Grab Handle	1
8	A00-0041	TEKTITE-DECAL	Tektite Cab Decal - Solid White	1
9	A00-0042	TEKT-ASM-001R	Right Cab Door Hinge Weldment, Upper	1
10	A00-0118	FLANGE_BOLT_1-4X1	Flange Bolt, 1/4" x 1", YD	2
11	A00-0177	TEKT-0068	Handle Washer Spacer	1
12	A00-0229	TEKT-ASM-029R	Right Door Hinge Weldment, Lower	1
13	A00-0295	FLANGE_BOLT_M6X30	Flange Bolt, M6x30, YD	1
14	J18-0001	JD2025R-044	Door Glass	1
15	J18-0007	JD2025R-ASM-10R	Right Door Frame Weldment	1
16	J18-0012	JD2025R-059R	Door Weatherstripping	1



Notice of Confidentiality

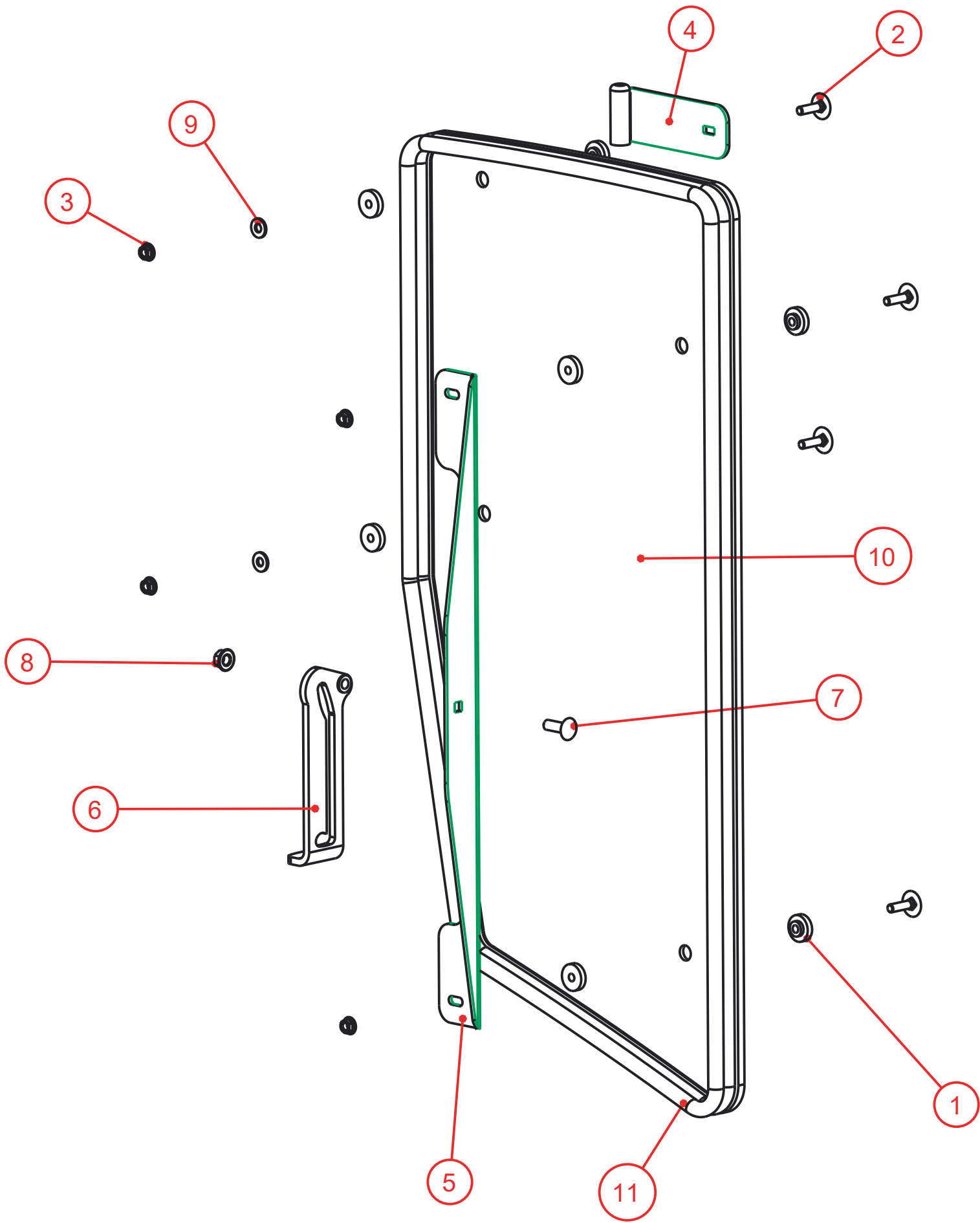
This material is property of Tektite Manufacturing Inc and is not to be used by the recipient for any purpose other than the purpose for which it was transmitted. The material remains the property of Tektite and shall be returned upon request. The material may not be reproduced or disclosed to third parties without the written consent of Tektite.

Tolerances:
Unless otherwise specified

X.X = $\pm 1/16"$
Angular = $\pm 1.0^\circ$

Tektite Manufacturing Inc. 24157 Hwy 3, Box 639, Winkler MB, R6W 4A8, Canada					
Req'd:	CNC:	Description:			
1 req		Right Door Assembly			
Drawn By:	Date:	Units:	File Name:		
Daryl Furkalo	2018-07-18	Imp.	JD2025R-ASM-07R_OP		
Checked By:	Date:	Size:			
		B			

Index	Service Part #	File Name	Description	Qty
1	A00-0013	TEKT-0009	5MM Bushing	8
2	A00-0019	STEP-BOLT1-4X1	Step Bolt, 1/4" x 1", MB	4
3	A00-0021	FLANGE-NUT-1-4	Flange Nut, 1/4", YD	4
4	A00-0044	TEKT-ASM-002	Side Window Hinge Weldment	2
5	A00-0045	TEKT-0004	Side Window Slider Bracket, 1" tube	1
6	A00-0057	TEKT-0020MIR	Side Window Latch, L60776	1
7	A00-0058	CARRIAGE_BOLT-5-16X1	Bolt, Carriage, 5/16"x 1", YD	1
8	A00-0059	FLANGE-NUT-5-16	Flange Nut, 5/16", YD	1
9	A00-0119	WASHER_1-4	Washer, Flat, 1/4"	2
10	J18-0002	JD2025R-045	Side Window Glass	1
11	J18-0013	JD2025R-060-	Side Window Seal	1



Tektite Manufacturing Inc.
24157 Hwy 3, Box 639, Winkler MB, R6W 4A8, Canada

Notice of Confidentiality

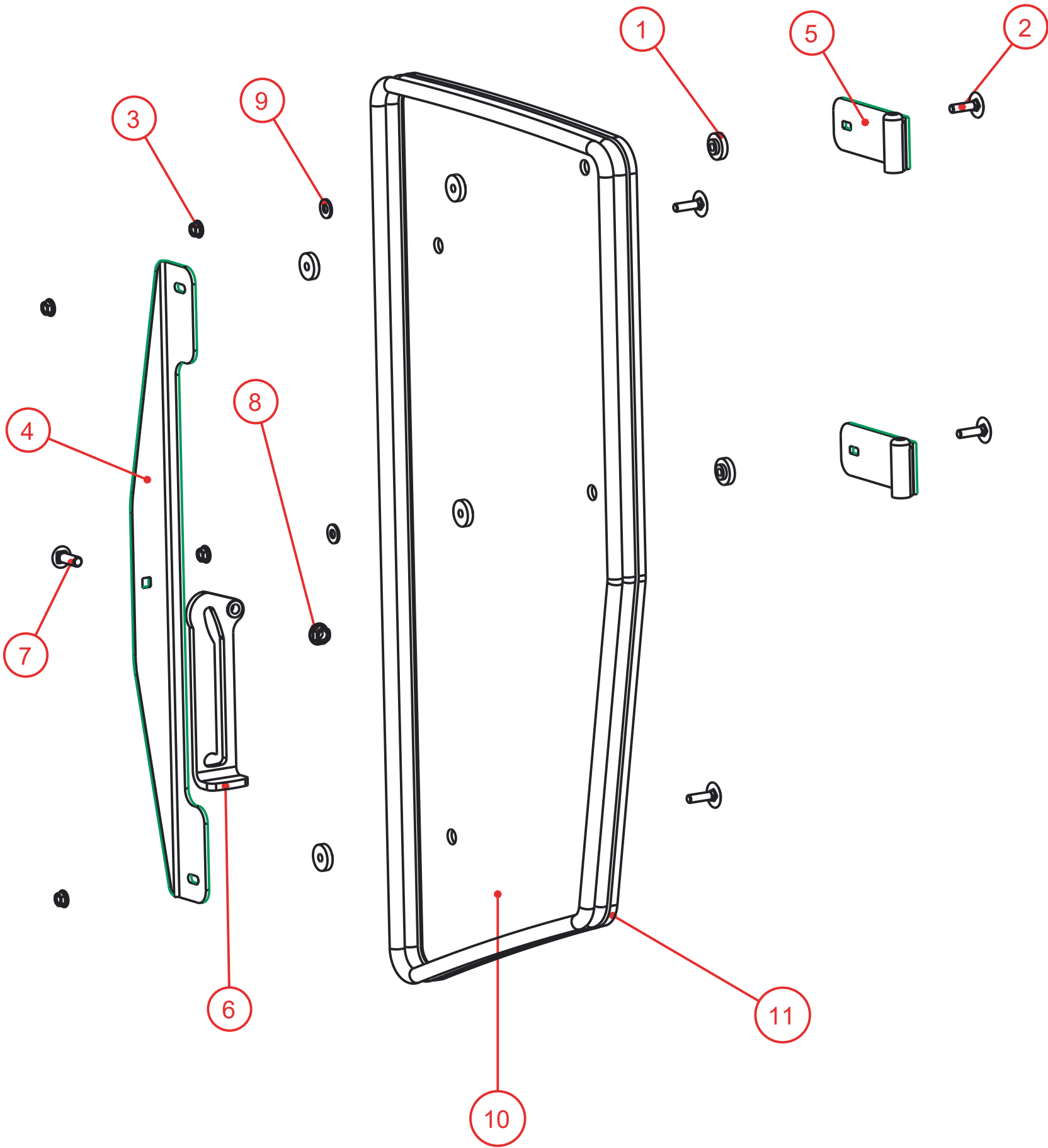
This material is property of Tektite Manufacturing Inc and is not to be used by the recipient for any purpose other than the purpose for which it was transmitted. The material remains the property of Tektite and shall be returned upon request. The material may not be reproduced or disclosed to third parties without the written consent of Tektite.

Tolerances:
Unless otherwise specified

X.X = ± 1/16"
Angular = ± 1.0°

Req'd: 1 req					CNC:					Description: Left Side Window Assembly				
Drawn By: <i>Daryl Furkalo</i>					Date: 2018-07-18					Units: Imp.				
Checked By:					Date:					File Name: JD2025R-ASM-08_OP				
										Size: B				

Index	Service Part #	File Name	Description	Qty
1	A00-0013	TEKT-0009	5MM Bushing	8
2	A00-0019	STEP-BOLT1-4X1	Step Bolt, 1/4" x 1", MB	4
3	A00-0021	FLANGE-NUT-1-4	Flange Nut, 1/4", YD	4
4	A00-0045	TEKT-0004	Side Window Slider Bracket, 1" tube	1
5	A00-0046	TEKT-ASM-002R	Side Window Hinge Right	2
6	A00-0056	TEKT-0020	Side Window Latch, L60775	1
7	A00-0058	CARRIAGE_BOLT-5-16X1	Bolt, Carriage, 5/16"x 1", YD	1
8	A00-0059	FLANGE-NUT-5-16	Flange Nut, 5/16", YD	1
9	A00-0119	WASHER_1-4	Washer, Flat, 1/4"	2
10	J18-0002	JD2025R-045	Side Window Glass	1
11	J18-0013	JD2025R-060R	Side Window Seal	1



Notice of Confidentiality

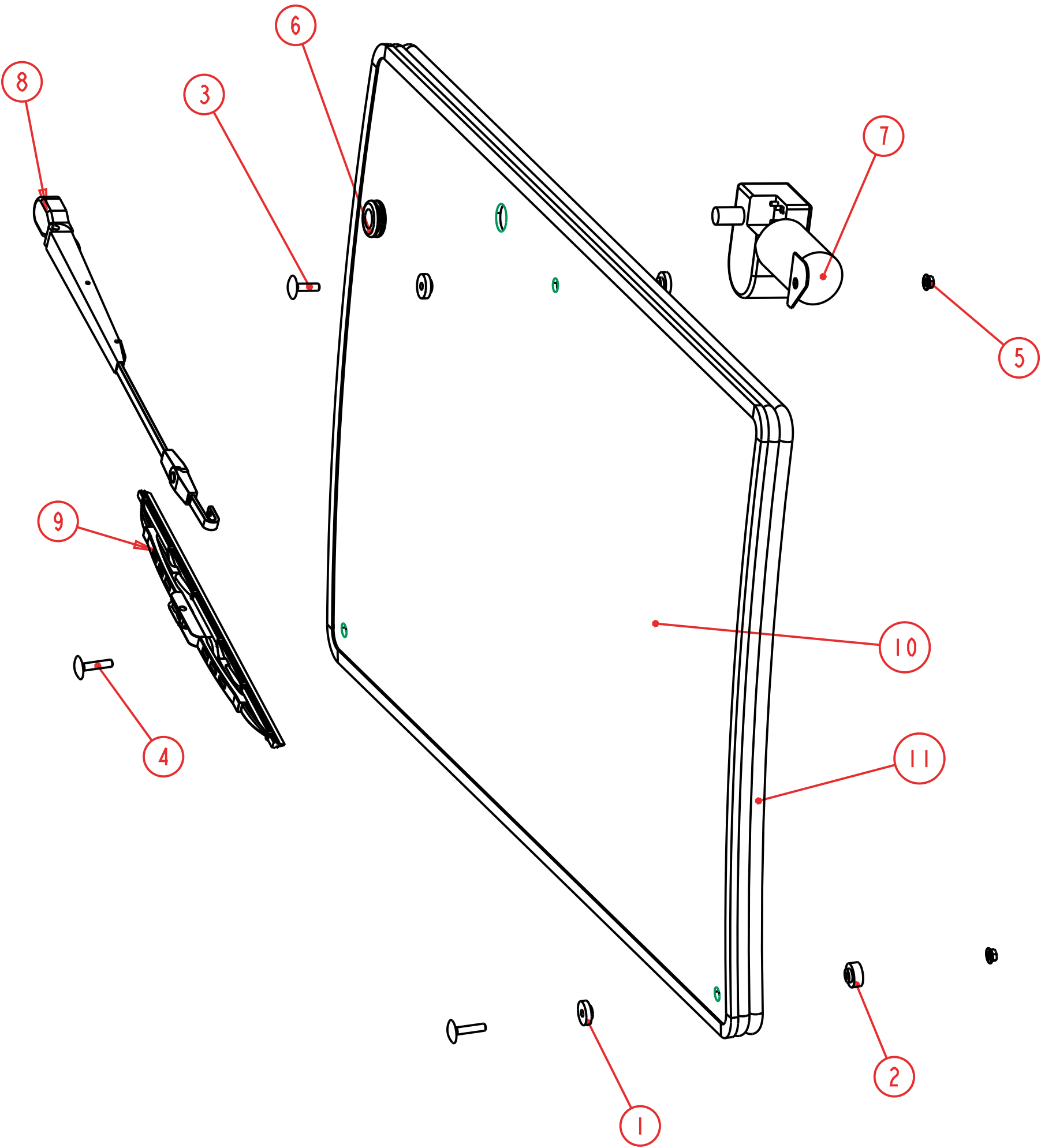
This material is property of Tektite Manufacturing Inc and is not to be used by the recipient for any purpose other than the purpose for which it was transmitted. The material remains the property of Tektite and shall be returned upon request. The material may not be reproduced or disclosed to third parties without the written consent of Tektite.

Tolerances:
Unless otherwise specified

X.X = $\pm 1/16"$
Angular = $\pm 1.0^\circ$

Tektite Manufacturing Inc. 24157 Hwy 3, Box 639, Winkler MB, R6W 4A8, Canada					
Req'd:	CNC:	Description:			
1 req		Right Side Window Assembly			
Drawn By:	Date:	Units:	File Name:		
Daryl Furkalo	2018-07-18	Imp.	JD2025R-ASM-O8R_OP		
Checked By:	Date:	Size:			
		B			

Index	Service Part #	File Name	Description	Qty
1	A00-0013	TEKT-0009	5MM Bushing	4
2	A00-0014	TEKT-0092	Thick Bushing	2
3	A00-0019	STEP-BOLT1-4X1	Step Bolt, 1/4" x 1", MB	1
4	A00-0020	STEP-BOLT1-4X1-1-4	Step Bolt, 1/4" x 1 1/4", MB	2
5	A00-0021	FLANGE-NUT-1-4	Flange Nut, 1/4", YD	3
6	A00-0033	315-080	Rear Wiper Shaft Grommet	1
7	A00-0043	WWF-MOTOR	WWF Wiper Motor, 1" Shaft	1
8	A00-0429	TEKT-0274	Adjustable J-Hook Arm, 16"	1
9	A00-0430	TEKT-ASM-104	16" Wiper Blade J-Hook	1
10	J18-0004	JD2025R-049	Windshield Glass	1
11	J18-0014	JD2025R-061-	Windshield Weatherstripping	1



SCALE 0.250

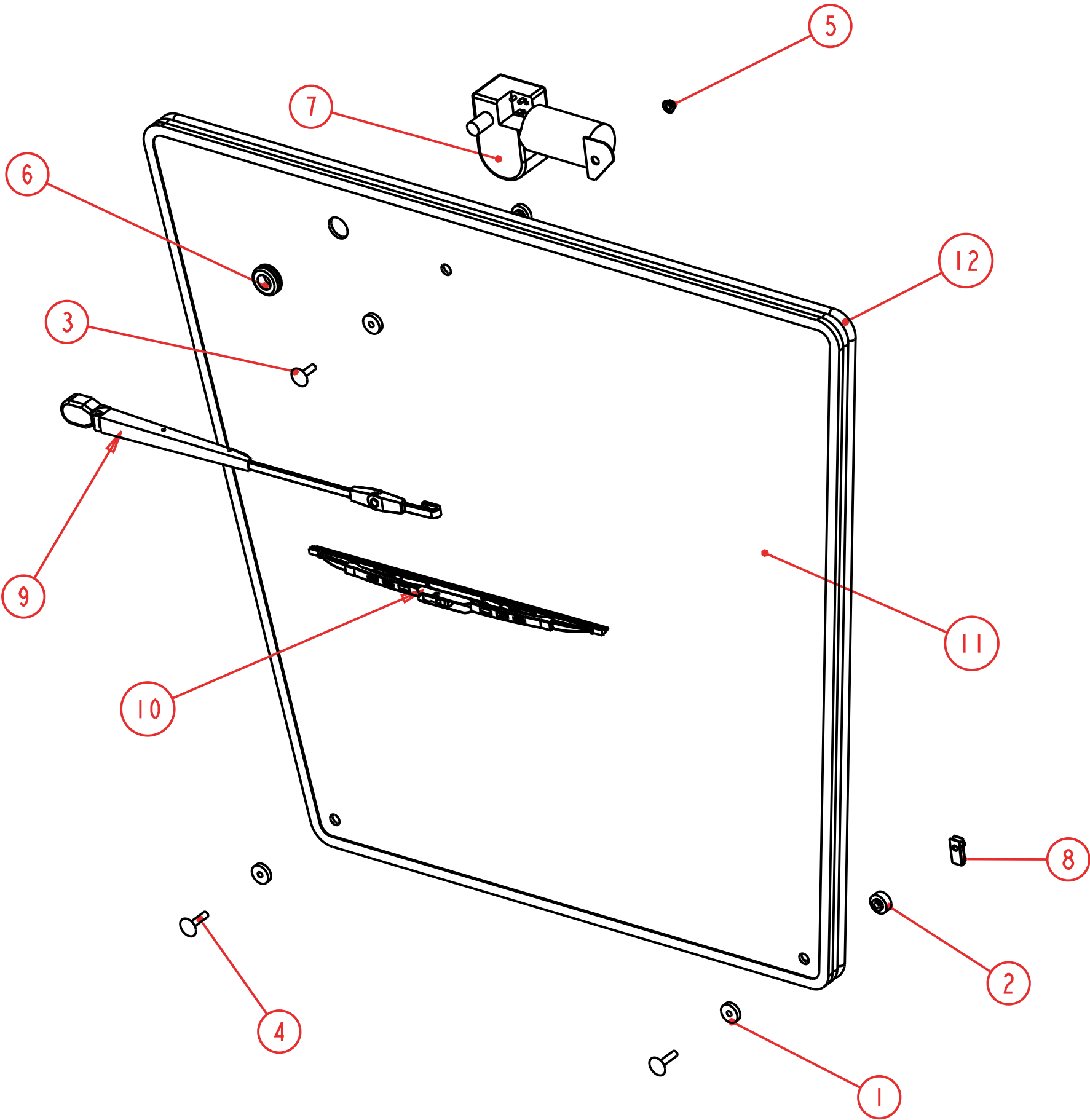
Notice of Confidentiality

This material is property of Tektite Manufacturing Inc and is not to be used by the recipient for any purpose other than the purpose for which it was transmitted. The material remains the property of Tektite and shall be returned upon request. The material may not be reproduced or disclosed to third parties without the written consent of Tektite.

Tolerances:
Unless otherwise specified
X.X = ±1/16"
Angular = ± 1.0°

Tektite Manufacturing Inc. 427 Buffalo Str, Box 639, Winkler MB, R6W 4A8, Canada				
Req'd:	CNC:	Description:		
1 req		Windshield Assembly		
Drawn By:	Date:	Units:	File Name:	
Daryl Furkalo	2025-04-14	Imp.	JD2025R-ASM-11_OP	
Checked By:	Date:	Size:		
		B		

Index	Service Part #	File Name	Description	Qty
1	A00-0013	TEKT-0009	5MM Bushing	4
2	A00-0014	TEKT-0092	Thick Bushing	2
3	A00-0019	STEP-BOLT1-4X1	Step Bolt, 1/4" x 1", MB	1
4	A00-0020	STEP-BOLT1-4X1-1-4	Step Bolt, 1/4" x 1 1/4", MB	2
5	A00-0021	FLANGE-NUT-1-4	Flange Nut, 1/4", YD	1
6	A00-0033	315-080	Rear Wiper Shaft Grommet	1
7	A00-0043	WWF-MOTOR	WWF Wiper Motor, 1" Shaft	1
8	A00-0076	TEKT-0026	1/4" Panel Nut	2
9	A00-0429	TEKT-0274	Adjustable J-Hook Arm, 16"	1
10	A00-0430	TEKT-ASM-104	16" Wiper Blade J-Hook	1
11	J18-0005	JD2025R-052	Rear Window Glass	1
12	J18-0015	JD2025R-062-	Rear Window Weatherstripping	1



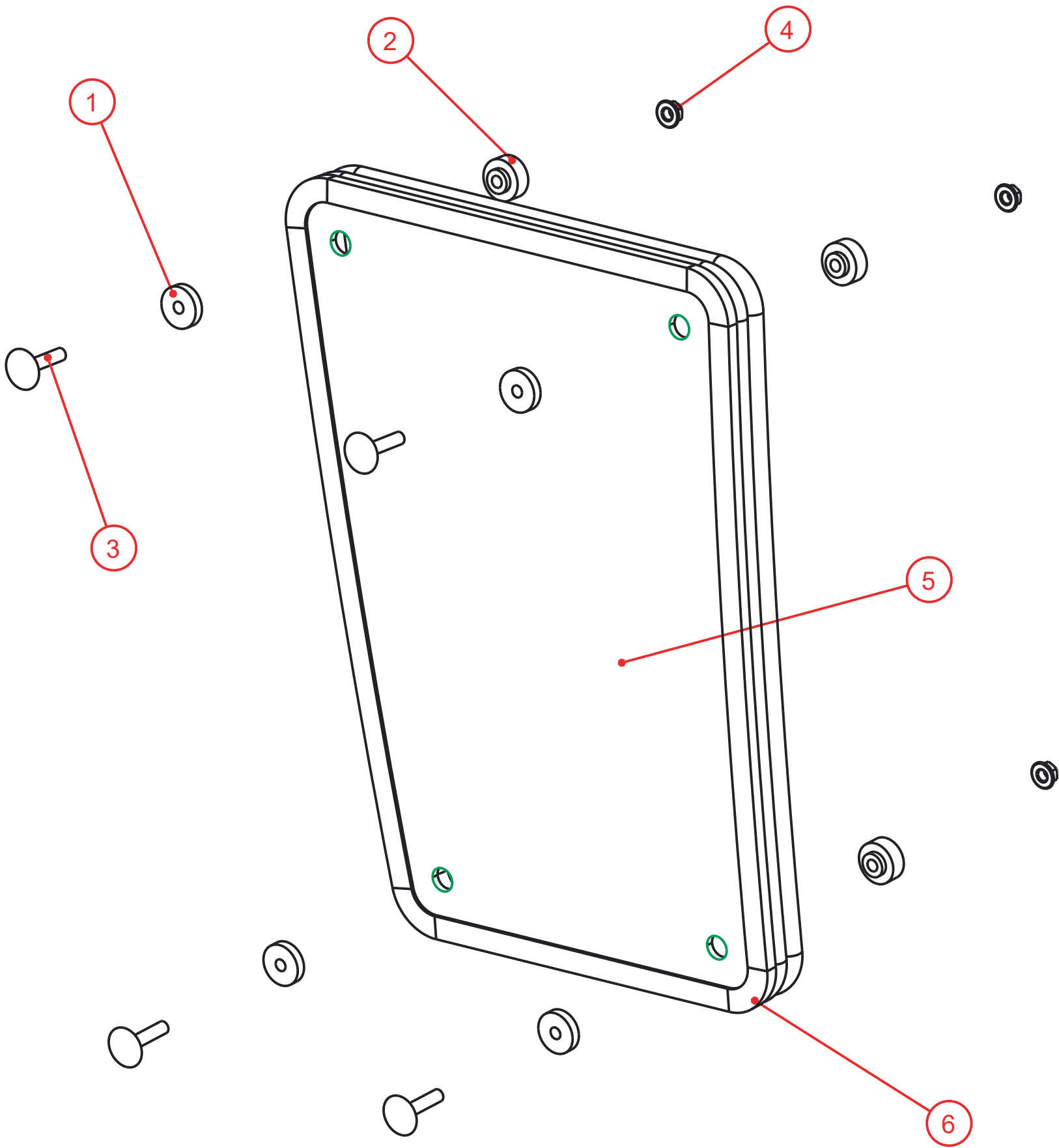
Notice of Confidentiality

This material is property of Tektite Manufacturing Inc and is not to be used by the recipient for any purpose other than the purpose for which it was transmitted. The material remains the property of Tektite and shall be returned upon request. The material may not be reproduced or disclosed to third parties without the written consent of Tektite.

Tolerances:
Unless otherwise specified
X.X = $\pm 1/16"$
Angular = $\pm 1.0^\circ$

Tektite Manufacturing Inc. 427 Buffalo Str, Box 639, Winkler MB, R6W 4A8, Canada				
Req'd:	CNC:	Description:		
1 req		Rear Window Assembly		
Drawn By:	Date:	Units:	File Name:	
Daryl Furkalo	2025-04-22	Imp.	JD2025R-ASM-12_OP	
Checked By:	Date:	Size:		
		B		

Index	Service Part #	File Name	Description	Qty
1	A00-0013	TEKT-0009	5MM Bushing	4
2	A00-0014	TEKT-0092	Thick Bushing	4
3	A00-0020	STEP-BOLT1-4X1-1-4	Step Bolt, 1/4" x 1 1/4", MB	4
4	A00-0021	FLANGE-NUT-1-4	Flange Nut, 1/4", YD	4
5	J18-0003	JD2025R-048	Lower Front Glass	1
6	J18-0016	JD2025R-063-	Lower Front Window Seal	1



Notice of Confidentiality

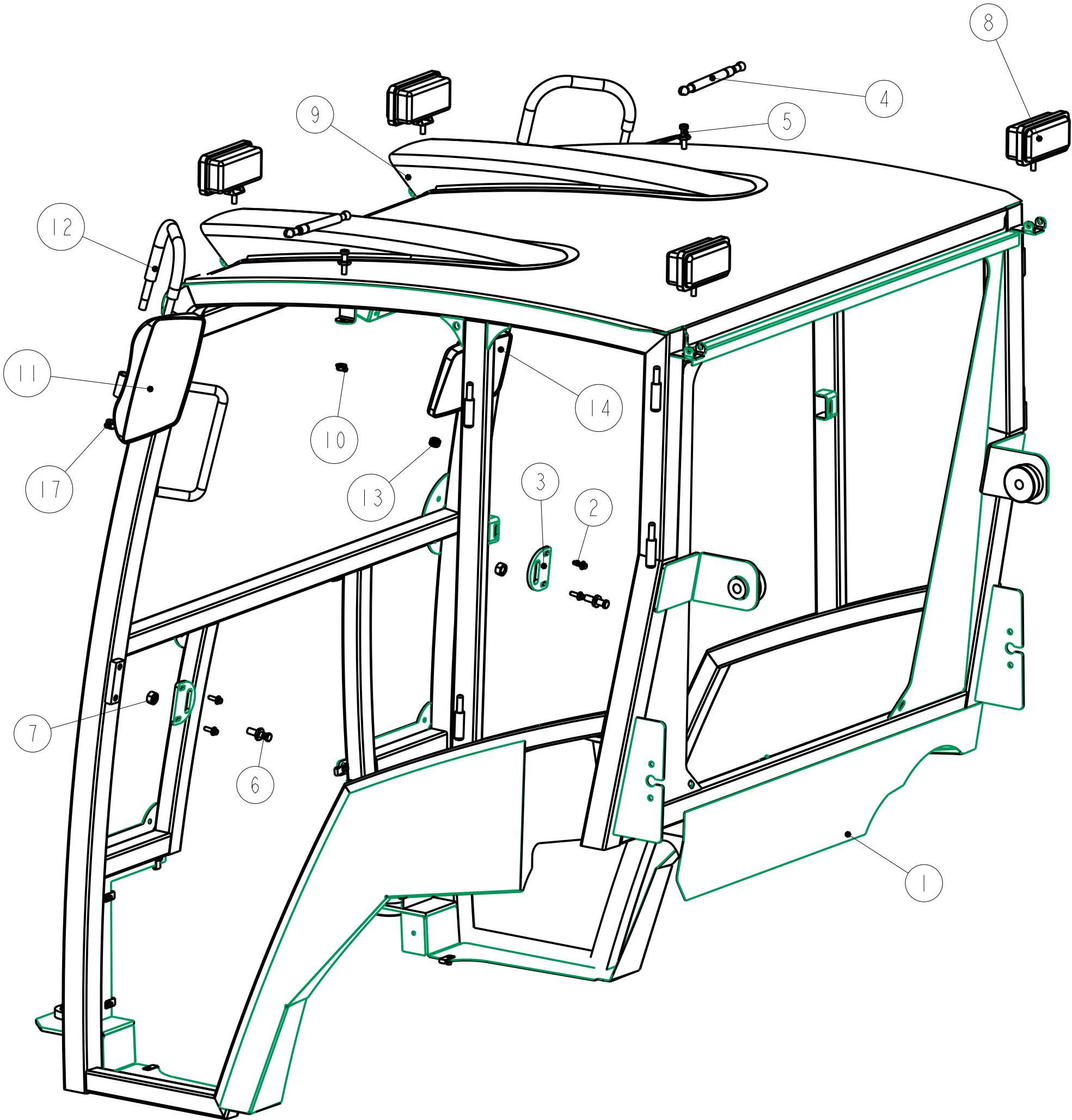
This material is property of Tektite Manufacturing Inc and is not to be used by the recipient for any purpose other than the purpose for which it was transmitted. The material remains the property of Tektite and shall be returned upon request. The material may not be reproduced or disclosed to third parties without the written consent of Tektite.

Tolerances:
Unless otherwise specified

X.X = $\pm 1/16"$
Angular = $\pm 1.0^\circ$

Tektite Manufacturing Inc. 24157 Hwy 3, Box 639, Winkler MB, R6W 4A8, Canada					
Req'd: L&R	CNC:	Description: Lower Front Window Assembly			
Drawn By: <i>Daryl Furkalo</i>	Date: 2018-07-17	Units: Imp.	File Name: JD2O25R-ASM-13_OP		
Checked By:	Date:	Size: B			

Index	Service Part #	File Name	Description	Qty
1		JD2025R-ASM-14-RUBBER		1
2	A00-0023	FLANGE_BOLT_1-4X3-4	Flange Bolt, 1/4" x 3/4", YD	4
3	A00-0061	TEKT-0021	Striker Mounting Plate	2
4	A00-0084	TEKT-0070	Gas Shock	2
5	A00-0085	TEKT-0069	Gas Shock Stud	2
6	A00-0101	STRIKER-PIN	Striker Pin	2
7	A00-0103	HEX-NUT-M12X1	Hex Nut, M12 x 1.0, YD	2
8	A00-0371	TEKT-0175	New LED Work Light (Blazer Intl)	4
9	A00-0389	KUBX2380-NOSTRIL	Plastic Light Nostril	2
10	A00-0413	FLANGE-NUT-5-16	Flange Nut, 5/16", YD	2
11	A00-0519	TEKT-0244	Rectangular Mirror	2
12	A00-0520	TEKT-0243	Mirror Bracket Bar	2
13	A00-0521	M12X1.75-NYLOCK-NUT	Nylon Lock Nut, M12 x 1.75	3
14	A00-0535	TEKT-0249	Rectangular Interior Mirror	1
15	A00-0536	TEKT-0250	Spacer For Interior Mirror	1
16	A00-0537	CARRIAGE_BOLT-M12X50	Carriage Bolt, M12 x 50	1
17	A00-0552	M12X18-LOCK-NUT	M12 x 1.75 Crimp Lock Nut	2



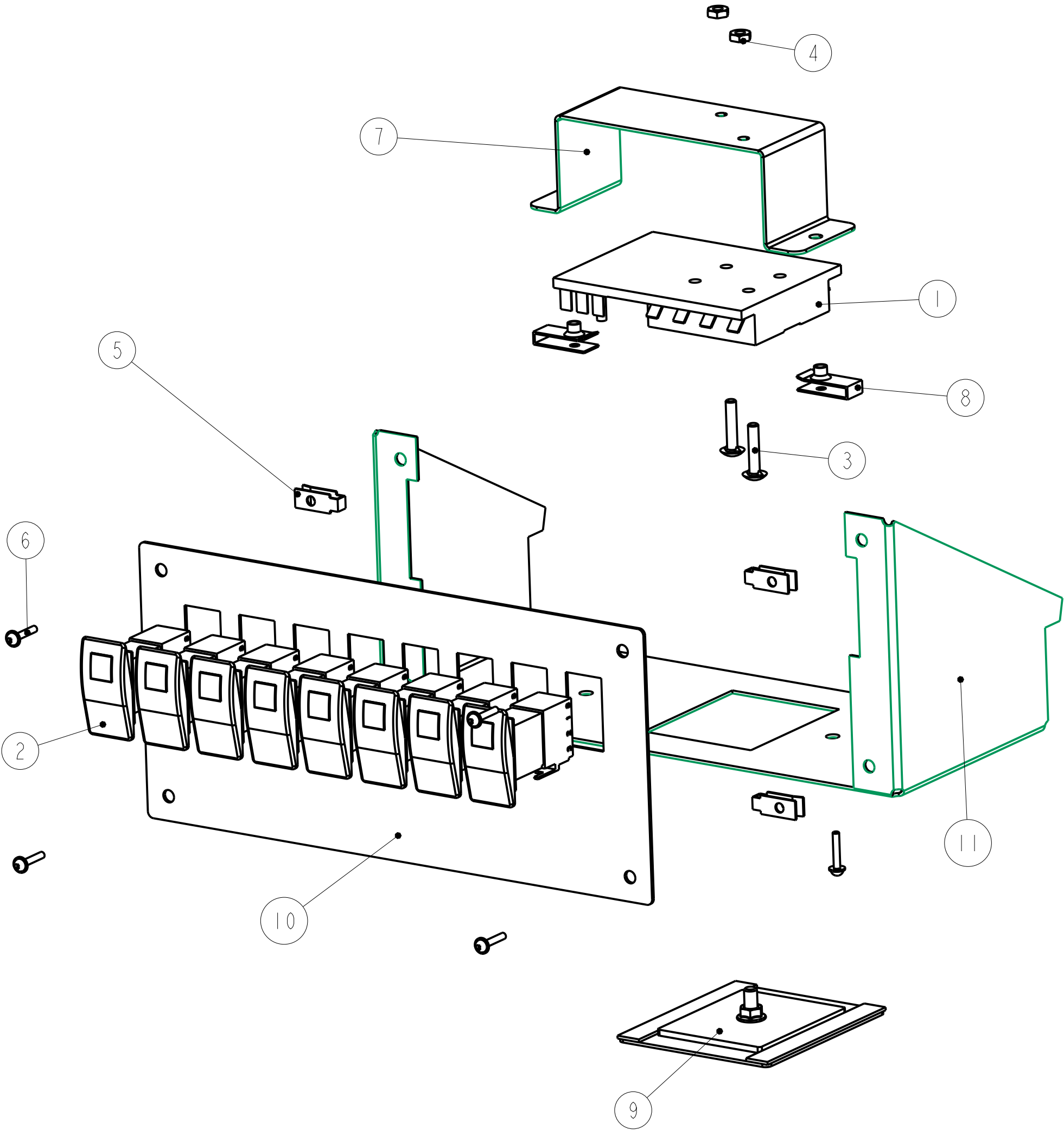
Notice of Confidentiality

This material is property of Tektite Manufacturing Inc and is not to be used by the recipient for any purpose other than the purpose for which it was transmitted. The material remains the property of Tektite and shall be returned upon request. The material may not be reproduced or disclosed to third parties without the written consent of Tektite.

Tolerances:
Unless otherwise specified
X.X = ±1/16"
Angular = ± 1.0°

Tektite Manufacturing Inc. 427 Buffalo Str, Box 639, Winkler MB, R6W 4A8, Canada			
Req'd:	CNC:	Description:	
1 req		Optional Accessories	
Drawn By:	Date:	Units:	File Name:
Daryl Furkalo	2025-04-22	Imp.	JD2025R-ASM-18
Checked By:	Date:	Size:	
		B	

Index	Service Part #	File Name	Description	Qty
1	A00-0024	BUSS-15600-08-11	Power Block/Ground	1
2	A00-0065	TEKT-ASM-005	On-Off Switch w/Lens	8
3	A00-0180	BOLT_10-32X1	Fuse Block Bolts	2
4	A00-0181	HEX-NUT-10-32	Fuse Block Nuts	2
5	A00-0218	TEKT-0218	10-24 Panel Nut	4
6	A00-0354	SCREW-10-24X3-4	Screw, 10-24 x 3/4",MB	6
7	A00-0418	TEKT-0010	Fuse Block Retainer Bracket	1
8	A00-0494	TEKT-0221	10-24 Panel Nut, Thick	2
9	A00-0531	TEKT-ASM-086	2023 Fuse Cover, Magnet Assembly	1
10	A00-0539	TEKT-0248	Switch Plate, V5 ST	1
11	n/a	TEKT-0247	Switchplate Mount V7	1



Notice of Confidentiality

This material is property of Tektite Manufacturing Inc and is not to be used by the recipient for any purpose other than the purpose for which it was transmitted. The material remains the property of Tektite and shall be returned upon request. The material may not be reproduced or disclosed to third parties without the written consent of Tektite.

Tolerances:
Unless otherwise specified
X.X = $\pm 1/16"$
Angular = $\pm 1.0^\circ$

Tektite Manufacturing Inc. 427 Buffalo Str, Box 639, Winkler MB, R6W 4A8, Canada				
Req'd: 1 req	CNC:	Description: 2023 Steel Top Fuse Block Assembly		
Drawn By: <i>Daryl Furkalo</i>	Date: 2023-06-02	Units: Imp.	File Name: TEKT-ASM-088_OP	
Checked By:	Date:	Size: B		