



## Toro MP5800-G Series ROPS Cab

\* Shown with optional components \*



\*A respirator must be worn AT ALL TIMES while using spray vehicle\*

### **Toro MP5800-G ROPS Cab**

**This ROPS cab is designed and built to fit the Toro MP5800-G Gas model only.**

**Designed and Built by:**

**Tektite Manufacturing Inc:**

**427 Buffalo Street**

**P.O. Box 639 Winkler, MB**

**R6W 4A8**

**Canada**

**PH: 204-331-3463**

**Fax: 204-331-4159**

**sales@tektite.ca**

**www.tektite.ca**

**One year standard product warranty provided by Tektite.**



**DO NOT PROCEED FURTHER UNTIL YOU HAVE READ THE INFORMATION BELOW**

- 1) Always wear personal protective equipment**
- 2) A minimum of two people is necessary to safely install the cab**
- 3) This ROPS cab is heavy. A lift assist device such as an overhead hoist or high lift forklift is required.**
- 4) Ensure your work area is well ventilated. The installation requires the starting of the tractor which will produce dangerous carbon monoxide fumes.**
- 5) Read through the entire installation manual first.**
- 6) Follow the installation instructions in order.**
- 7) Reading the operators manual prior to using the ROPS cab.**





Tektite Manufacturing Incorporated thanks you for purchasing a Toro MP5800-G ROPS Cab! Tektite has worked very hard to design and build this ROPS product and we hope that it provides you with many years of protection.

Tektite's products are designed to provide safe and dependable service during operation when they are properly maintained according to the instructions. Please read this installation manual carefully before installing and using this product.

The photos/illustrations provided in this manual may not provide all the detail needed, and are for reference only.

All directions provided are from the reference point of the tractor seat facing the steering wheel. All left and right references are from this view point.

For reference, please fill in the information below. This will assist your dealer in providing service for this product. It is advisable that this information be provided to your insurance company as well in the event that the tractor is lost or damaged.

Vehicle Model: \_\_\_\_\_

Tektite Serial Number: \_\_\_\_\_

Date of Purchase: \_\_\_\_\_

Dealer Name: \_\_\_\_\_

**Standard Parts List:**

Description	Qty
Side Panel Shields (o-rubber pre-installed)	L&R
Front Side Panel Shields (o-rubber pre-installed)	L&R
Roof Rails, Toro Red (pre-installed)	2
Platform Floormat	1
Fir Tree Fasteners	6
Washer, Flat, 1/4" Thick Structural, Yellow	4
Bolt, Hex, 5/8" x 3", Gr. 8, Yellow	4
Nut, Flange, 5/8", Gr. 8, Yellow	4
UKC-X Foam (Open Cell)	40"
Nut, Flange, 1/2", Gr. 8, Yellow	3
Bolt, Hex, 1/2" x 4 1/2", Gr. 8, Yellow	5
Rear Brackets	L&R
Front Brackets	L&R
Fuel Tank Extension Plate	1
Wire Loop, 1/4"	2
Female Connector, Insulated, 1/4"	1
Zip Ties, Standard	10
Tube Spacer, 3" Long x 3/8" ID DOM	2
Carriage Bolt, 5/16" x 1"	2
Nut, Flange, 5/16"	4
Washer, Flat, 5/16"	4
Bolt, Hex, 5/16" x 5"	2
180 Degree Bulb Seal, 10" Long	2

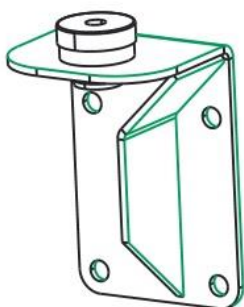
**Optional Heater/Air Conditioner Kit Parts List:**

Description	Qty
Compressor Mounting Bracket	1
Compressor Stiffener Bracket	1
Alternator Stiffener Bracket	1
Bolt, Flange, 3/8" x 1 1/2"	2
Bolt, Hex, 3/8" x 3 1/2"	1
Bolt, Hex, 3/8" x 2"	1
Nut, Flange, 3/8"	5
Compressor, Top Port	1
Zip Ties, Wiring Size	3
HS-24 Hose Clamps	4
HS-6 Hose Clamps	2
Wire Connector, Female Bullet, Blue	1





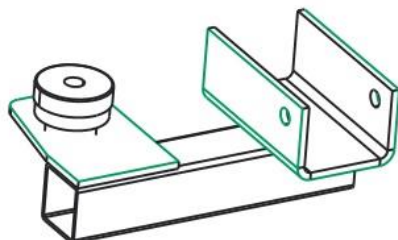
Bypass Hose Kit, 3/8" Hose Kit	1
1/2" x 24" V-belt (alternator),(A22)	1
13/32" x 42 5/8" V-belt (main drive),(25-7420)	1
Bolt, Hex, 3/8" x 1"	1
Pipe Elbow Weldment, 6" x 6 1/2"	1
Alternator Harness Extensions (3 wires w/loom)	1
Shrink Tube, 1"	3



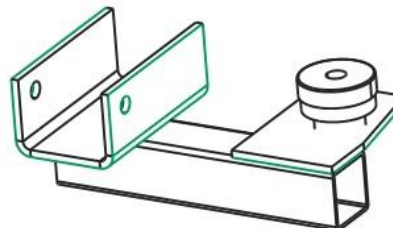
Left Rear Bracket



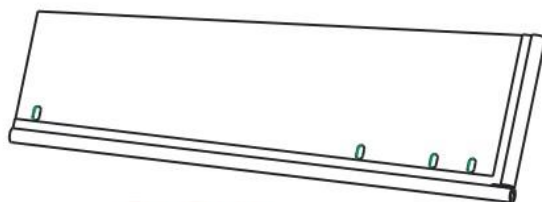
Right Rear Bracket



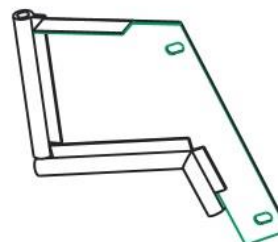
Left Front Bracket



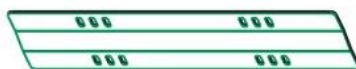
Right Front Bracket



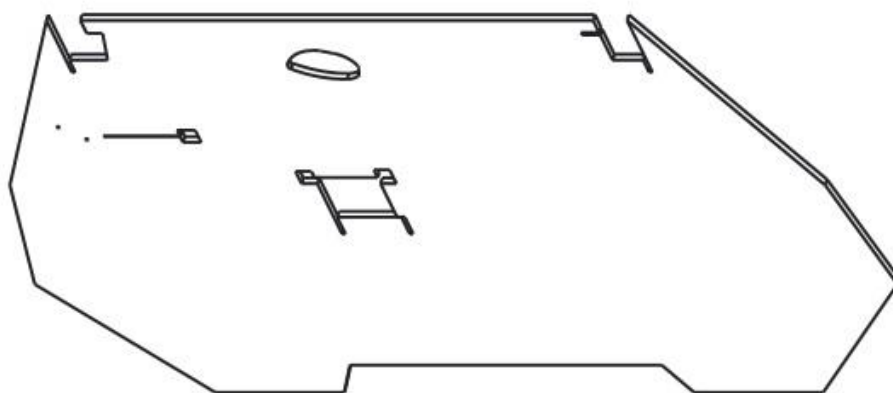
Side Shields  
Two



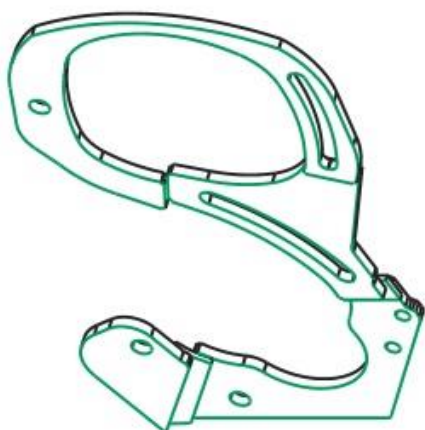
Left & Right  
Front Side Shields



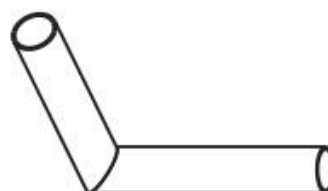
Fuel Tank  
Extension Plate



Main Cab Floor Mat



Compressor Bracket



Upper rad hose  
elbow weldment



Compressor Stiffener



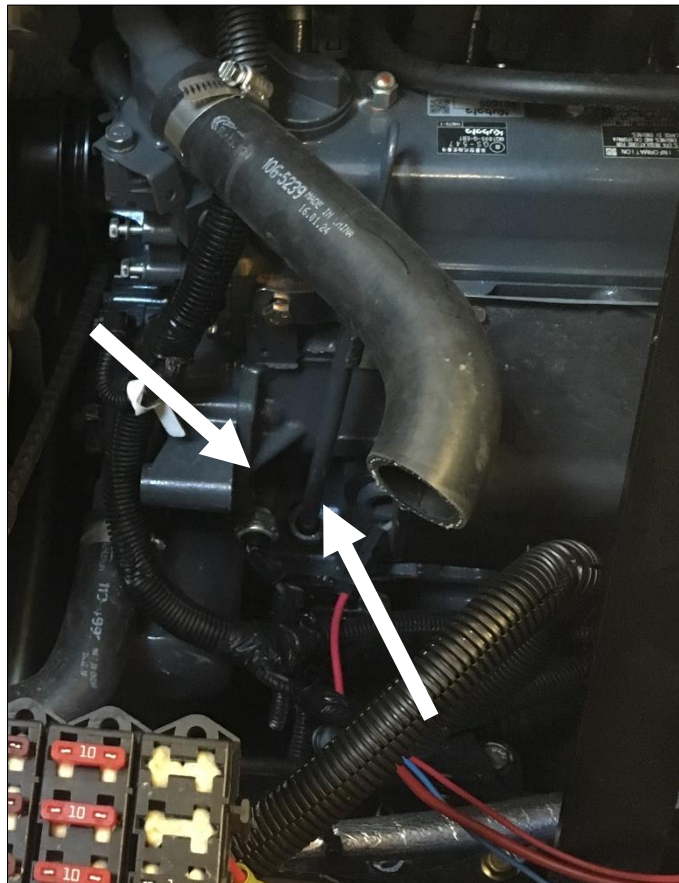
Alternator Stiffener



### Installation Instructions:

If cab is equipped with heater/air conditioner option, proceed with the following steps first:

- . Park the machine where you will have access to an over-head hoist, and where it is well ventilated.
- . Disconnect battery.
- . Drain engine coolant.
- . Un-bolt and remove the upper radiator hose.
- . Remove alternator, tensioner bracket, and guard from engine.
- . Remove the engine lift ear.
- . Bend dipstick **atleast** ½" to the rear to provide clearance for compressor. Use boss in front of dipstick for leverage.



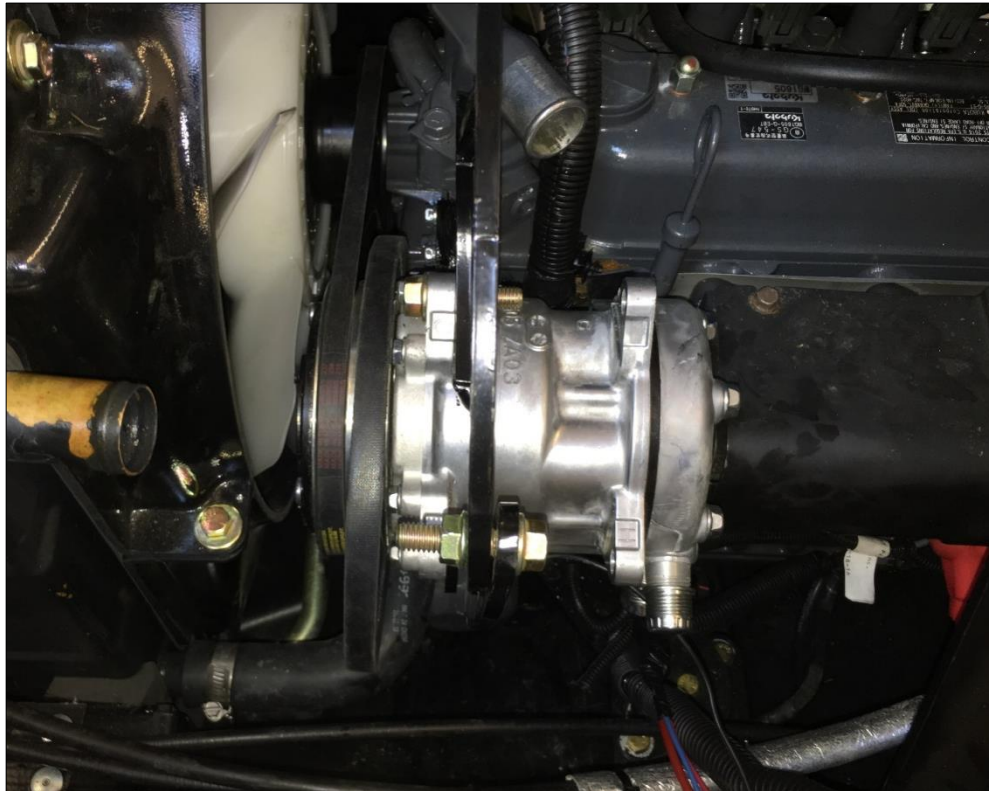


- . Remove bottom manifold shield assembly from underneath the muffler.
- . Un-bolt and remove eye wash tank from the 2-post ROPS.
- . Un-bolt and remove the air intake hose bracket from 2-post ROPS and air intake hose from the air cleaner.
- . Remove main drive belt by sliding around radiator fan.
- . Replace the factory drive belt with the longer belt provided in the kit.
- . Take the compressor mounting bracket and position it where the alternator and tensioner were located. Use the two existing tensioner fasteners to bolt the bracket into place on the top fastener holes. Use the provided  $\frac{3}{8}$ " x  $3\frac{1}{2}$ " hex bolt for the alternator bolt position but do not install the nut yet. Take the rear compressor support bracket (flat end) and slide it onto the back of this bolt with the welded spacer facing the rear. Start the nut, but do not tighten.





. Take the compressor and position it onto the mounting bracket. Using one 3/8" x 1 1/2" flange bolt and one 3/8" x 1" hex bolt, and flange nuts, loosely fasten the two bottom ears onto the mounting bracket and rear compressor support bracket.



. Slip the short v-belt onto the rear groove of the compressor. Slip the long belt onto the rear groove of the compressor.

. Take a 3/8" x 1 1/2" flange bolt and nut and start the tensioner fastener on the compressor. Firmly fasten the two compressor ear pivot bolts first. Then, apply tension to the compressor in order to properly tension the main engine drive belt and tighten the tensioner bolt.

. Take the alternator and slide it into the alternator opening on the compressor bracket. Slide the short belt onto the alternator before positioning as it will be very difficult afterwards. For the alternator pin, use the provided 3/8" x 2" flange bolt and nut. Slide the bolt through the pin, and then slide the alternator support bracket onto the back of the bolt and then loosely fasten.



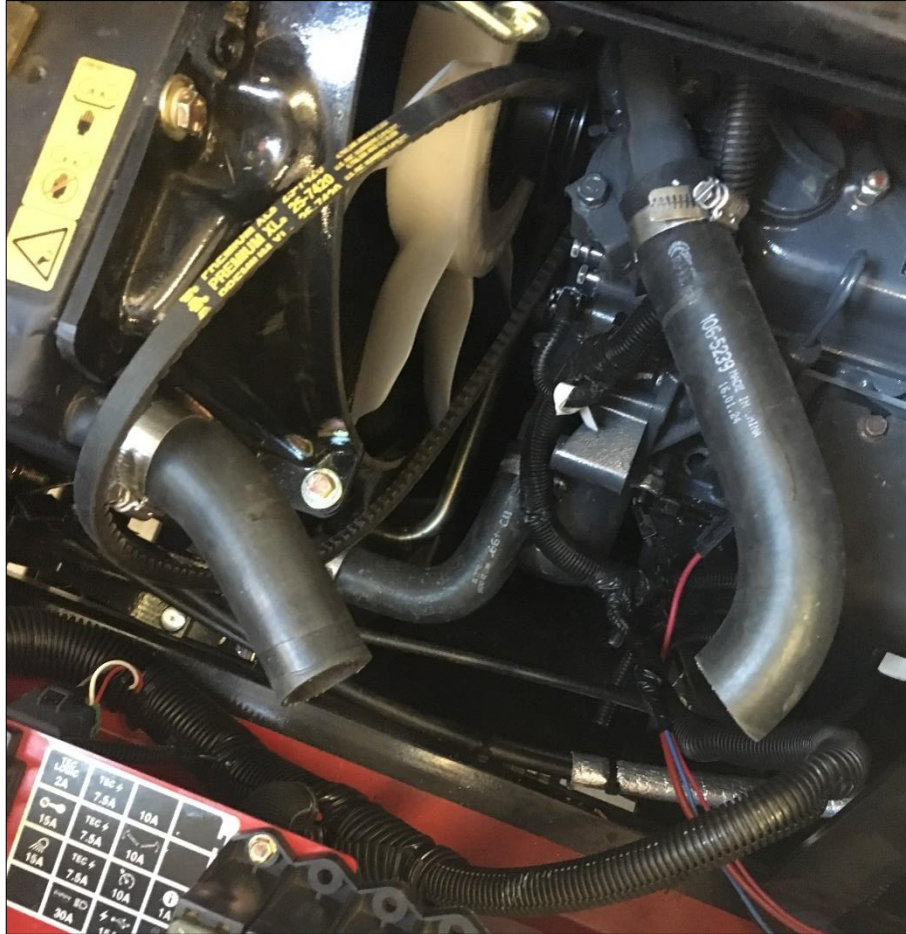


- . Re-using the alternator tensioner fastener for the tensioner position on the new bracket. Tighten the pin fastener first, and then apply tension for the alternator and tighten fastener. Use existing washer from factory alternator tensioner if necessary.
- . Take the upper radiator hose and cut as shown in photo below.

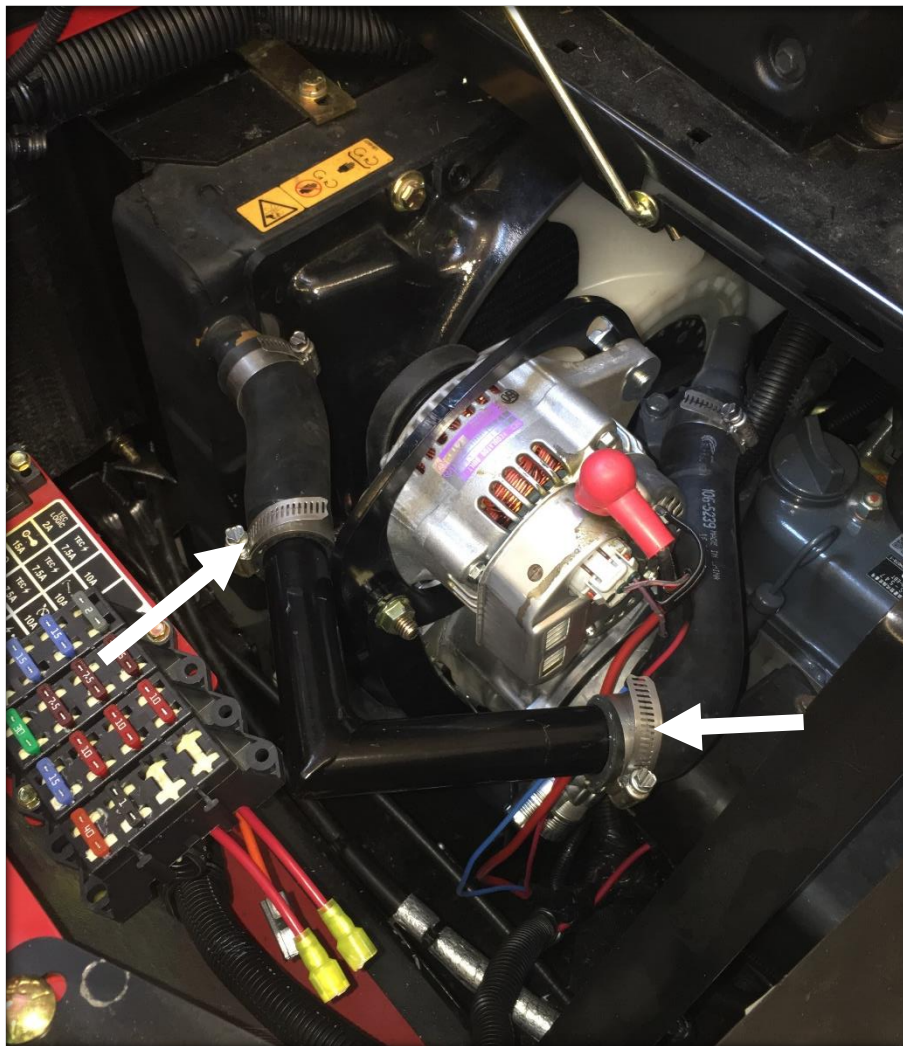


. Take the shorter hose and install it on the radiator side with the hose hooking outward. Install the longer hose on the engine side. Use the factory clamps.





. Take the provided pipe elbow and insert between the two upper radiator hoses. Use provided HS-24 hose clamps and tighten hoses into place around the alternator assembly. Double clamp each side.



. Take the provided AC wire extension harness and install onto the three wires going to the alternator. Use the red 10GA wire for the main power lead. Cut factory wire at loop connector and solder in extension wire. Use one of the shrink tubes to cover solder joint. Cut and extend 16GA red wire with provided red 16GA wire. Use shrink tube to cover solder joint. Cut and extend the purple wire with provided purple 16GA wire. Use shrink tube to cover solder joint.

. Re-connect the alternator wires.

The cab installation can now be completed.

. On the machine, remove both hip guards from driver and passenger seats. Retain fasteners to re-use later.

. Remove the battery box cover and slide battery box outwards for access to fasteners on 2-post ROPS.



. Disconnect fuel tank and remove fasteners from underneath the fuel tank. Take fuel tank off of its bottom mount plate.

.Un-bolt and remove 2-post ROPS, save fasteners to be re-used.

. Take left rear bracket and position on the 4-hole bolt pattern plate on the left chassis rail behind the operator platform. Use the factory fasteners and loosely attach bracket onto machine.



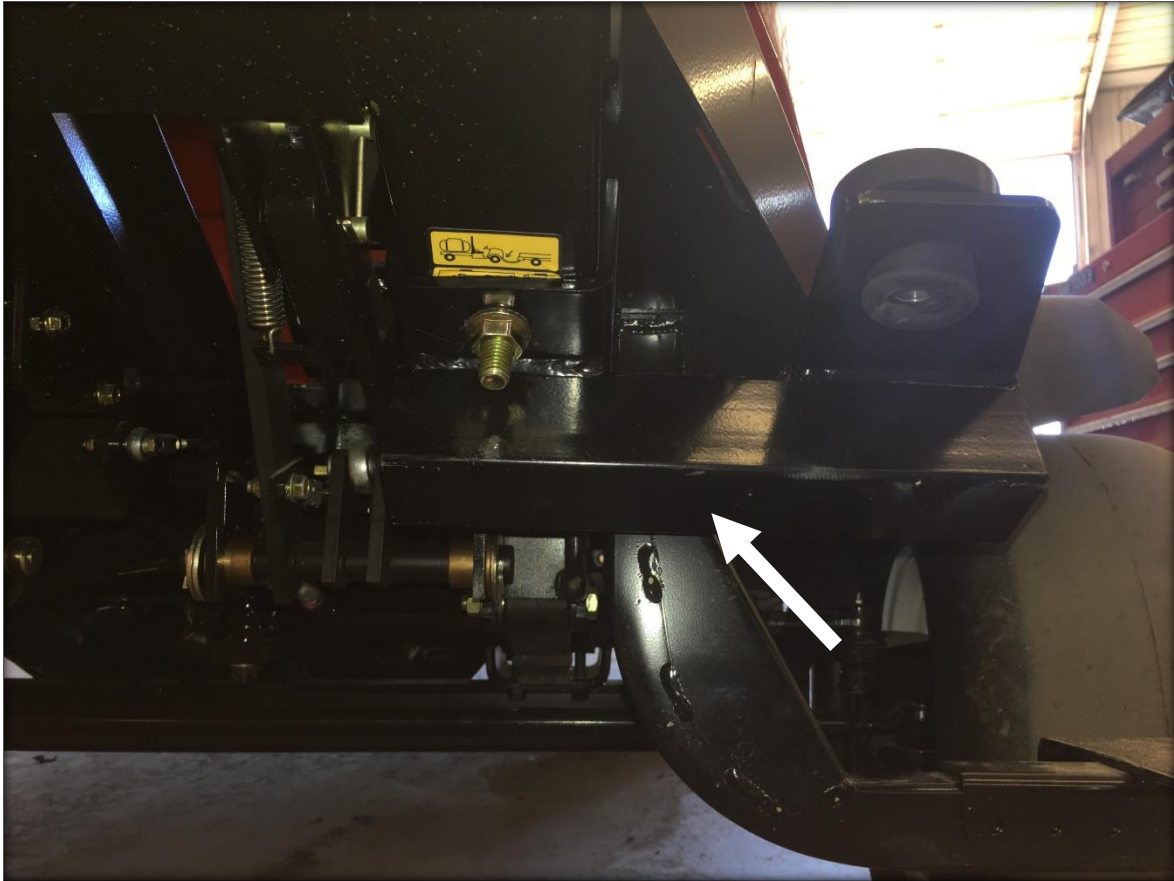




- . Re-position the lower portion of the battery box.
- . Take right rear bracket and position on the 4-hole bolt pattern plate on the right chassis rail behind the operator platform. Use the factory fasteners and loosely attach bracket onto machine.



- . Un-bolt the step from the left side underneath crossmember.
- . Take the left front bracket and position underneath the front operator platform onto the tube chassis member. Slide the provided  $\frac{1}{2}$ " x 4  $\frac{1}{2}$ " hex bolt and nut through the bracket and the hole in the tube. Tighten into place in order to location the hole that must be drilled through the platform.



- . Mark and drill a  $\frac{1}{2}$ " hole up through the hole in the mount plate through the frame crossmember and into the operator foot platform. Use a provided  $\frac{1}{2}$ " x 4  $\frac{1}{2}$ " hex bolt and nut to fasten bracket.
- . Take the right front bracket and position it underneath the front operator platform and onto the tube chassis member. Slide the provided  $\frac{1}{2}$ " x 4  $\frac{1}{2}$ " hex bolt and nut through the bracket and the hole in the tube. Tighten into place in order to location the hole that must be drilled through the platform.



- . Mark and drill a  $\frac{1}{2}$ " hole up through the hole in the mount plate through the frame crossmember and into the operator foot platform. Use a provided  $\frac{1}{2}$ " x 4  $\frac{1}{2}$ " hex bolt and nut to fasten bracket.
- . Remove the left and right head lights from the machine by removing the nuts at the rear of the light and letting the light hang forward through the opening in the hood.
- . Take the provided UKC-X open cell foam and install around the outside of the inside pocket the light normally sits in. Do this for the left and right head lights.



. Re-install the left and right head lights, and re-connect the wiring harness.

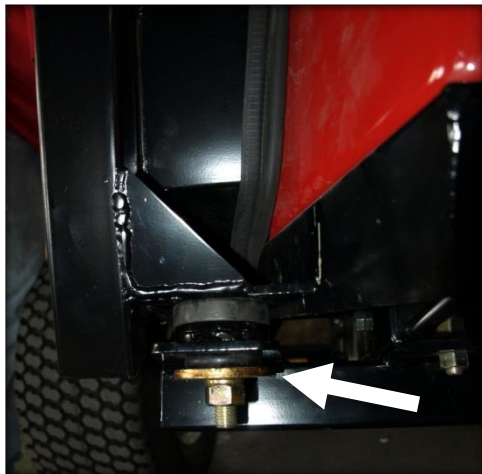


.Return to the cab to install lift brackets next. To remove the gas shock on the left cab door, slide a flat screwdriver underneath the small clip on the end cap that must be pulled UP order to pop the shock off of the ball stud. **The shock will release very easily when this is accomplished.** Lift the door assembly straight up and off of the cab and put aside for now. Remove both doors.





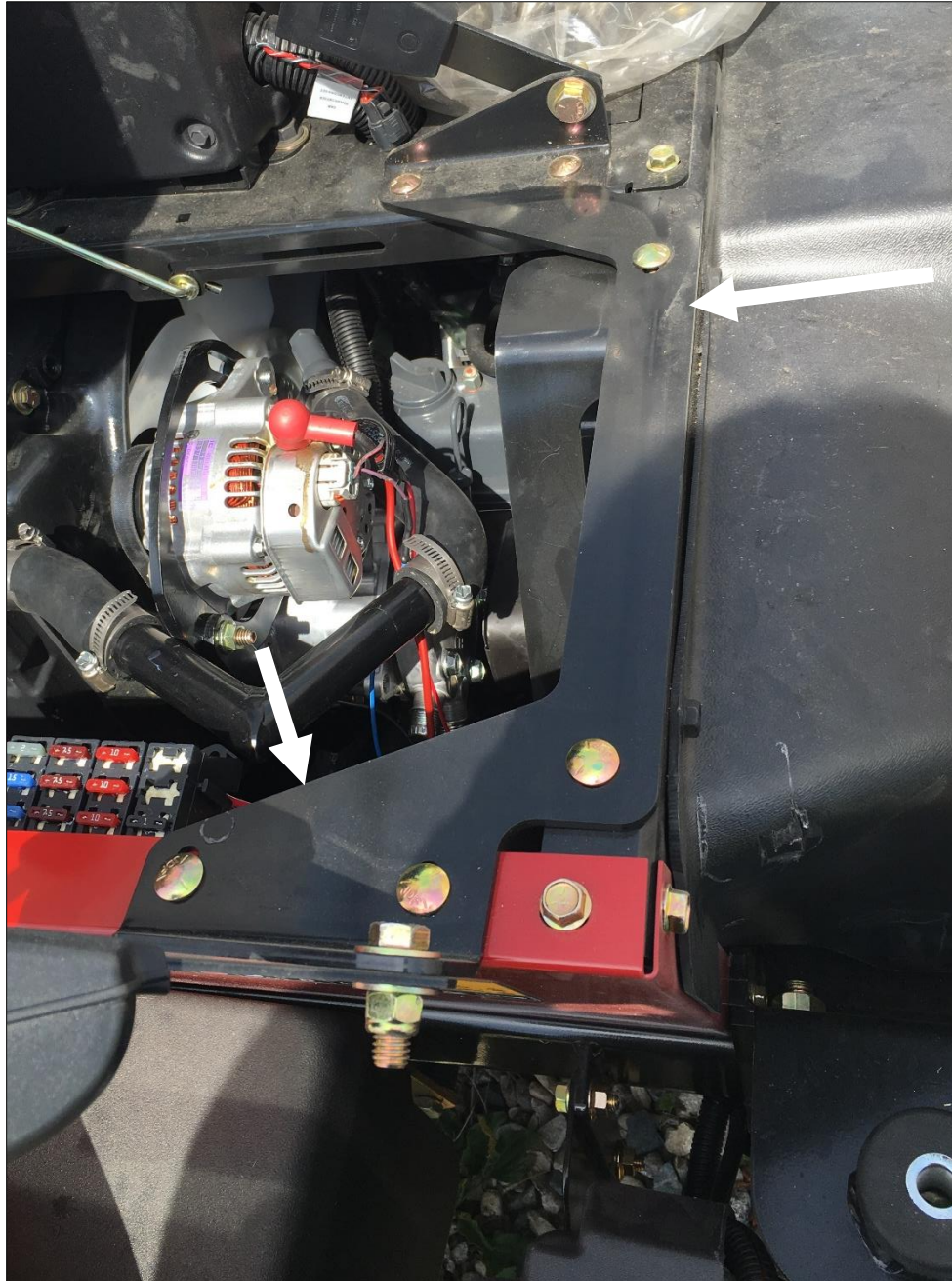
- . Take the provided lift bolt, a  $\frac{1}{2}$ " x  $4\frac{1}{2}$ " hex bolt, and fasten to the lift ear tab located at the top rear corner of the door. There is a weld nut behind tab. Install both lift bolts.
- . Use a lift strap and connect the two lift bolts together, sliding the strap under the brush bar above. Connect the strap/chain to an over-head hoist or fork lift. Un-bolt the front and rear mounts from the shipping pallet and lift cab up off of the shipping pallet.
- . Lift cab straight up and position over top of the machine. Slowly lower straight down until the isolators contact the mounting plates on the brackets.
- . Use the provided  $\frac{5}{8}$ " x 3" hex bolts, heavy flat washers, and flange nuts for each ROPS isolator location. For the front and rear mounts, the heavy flat washer goes on bottom for proper alignment.



- . Get all fasteners started, then completely release the over head hoist.



- . Remove the cab lift straps and then remove the cab lift bolts.
- . Tilt the driver seat forward. Un-bolt and remove the seat belt mount plate on the driver's side.



- . Tilt the passenger seat forward. Un-bolt and remove the seat belt mount plate on the passenger's side.



. Position the left side panel on top of the seat box and against cab frame. Ensure the weather-stripping seals are against the cab frame. Put the seat belt mounts on top of the shield, then re-use the factory fasteners and fasten the left side shield into place.





- . Repeat for the right side shield.
- . Take the front left side panel shield and position against the opening on the vertical plan in front of the seat box. Remove the fasteners towards the top that will be used for fastening. Bolt into place with factory hardware.
- . Repeat for the right shield.



- . Take the battery cover box and measure as shown in photo below. Cut out section shown.



. Re-install battery cover onto the sprayer.



. Take the 3" tube spacers, 5/16" x 5" hex bolts, 5/16" flat washers, and a 5/16" flange nuts along with the fuel tank rubber retainers. Install as shown below, with flat washers on either side of mount plate.





. Take the provided 5/16" x 1" carriage bolts, flange nuts, and the fuel tank extension plate and position the plate underneath the bottom of the factory fuel tank mount with the bending going up on the extension plate. This should make the extension inline with the factory plate. Fasten with the carriage bolts and flange nuts provided using the middle fastener.





. Take the fuel tank and slide into position on extended fuel tank plate. Push into rubber holders are rear, and fasten outside of tank to the extended fuel tank plate with factory hardware.



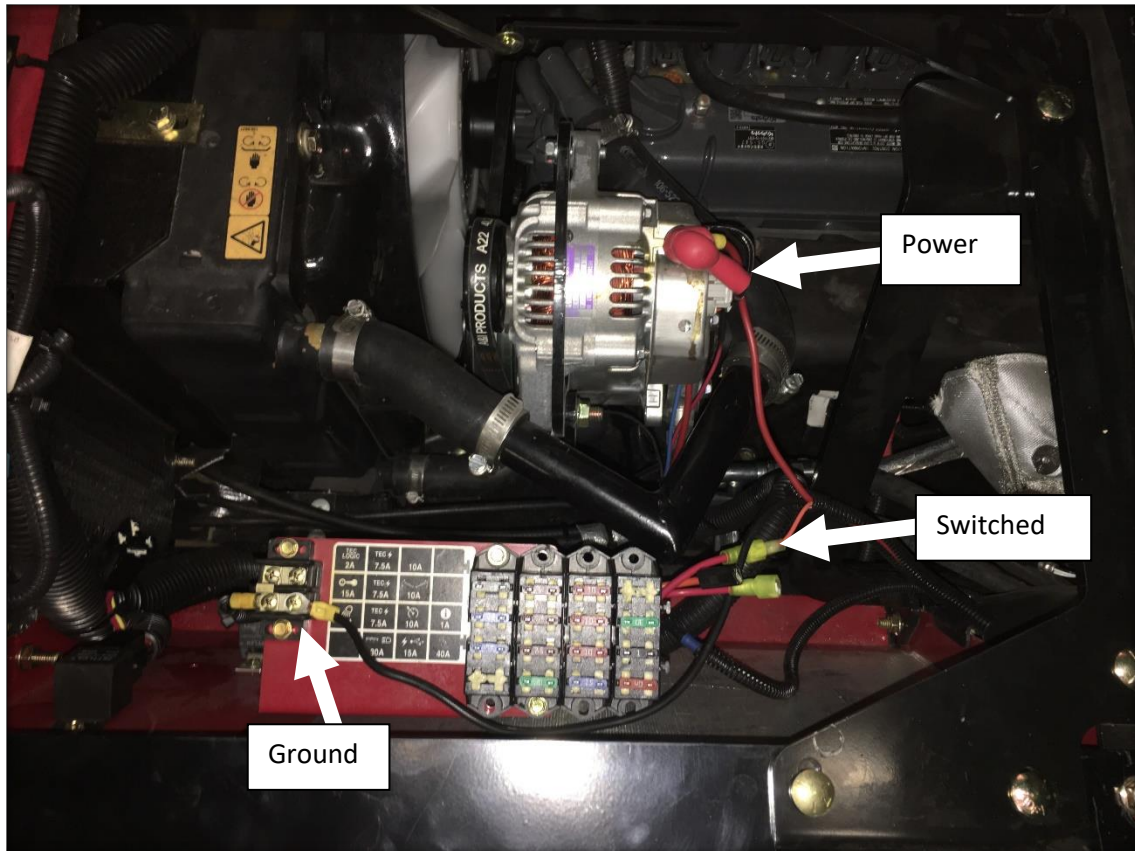


. Take the large air intake hose removed earlier and cut as shown just after the bottom elbow. Top cap will end up just underneath the right side panel installed earlier.



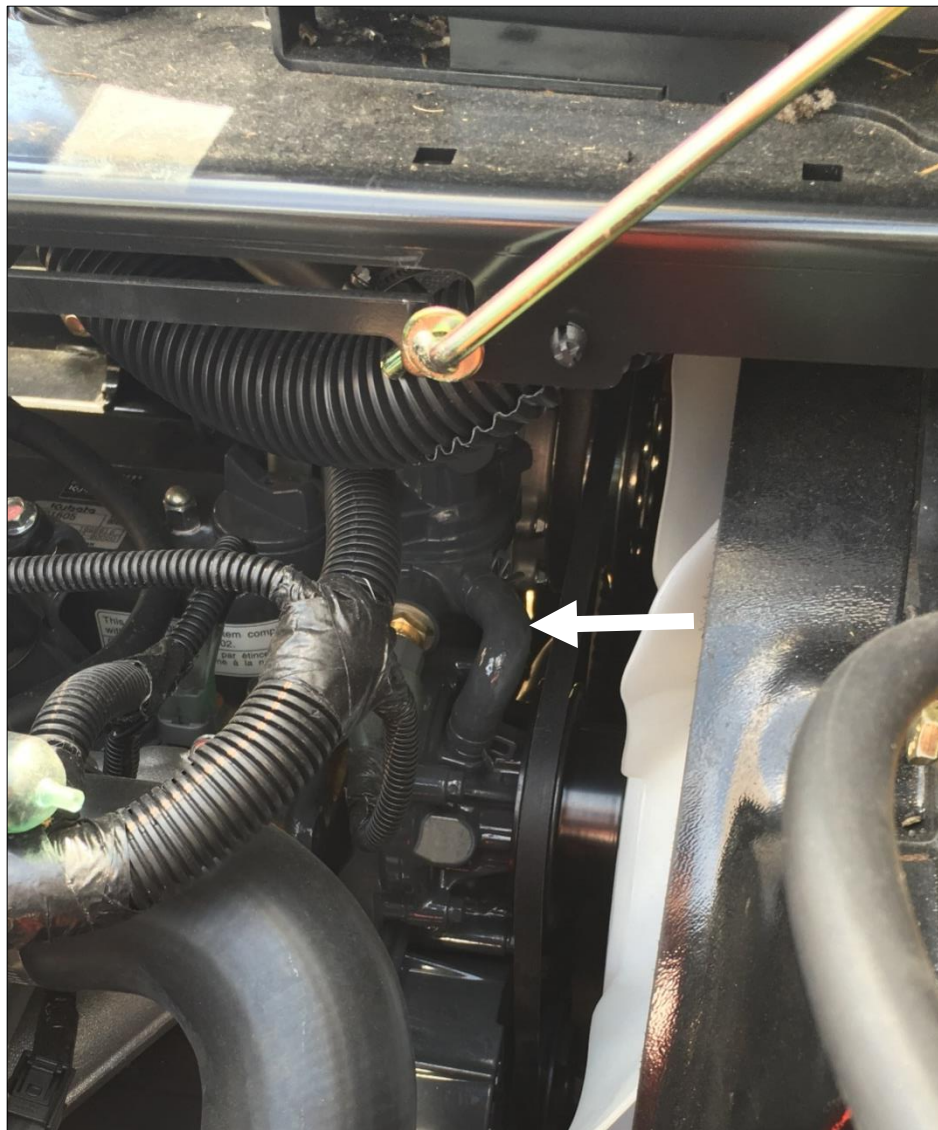


. Route the electrical harness located at the bottom of the left C-post and route under seat box towards the engine. On the left side panel, where the electrical connections of the machine are located, you can connect the heavy red wire to the alternator shown in the photo with the provided 1/4" loop. Shorten wire if necessary, then solder connector to wire. Connect the heavy black wire to a ground screw with provided 1/4" loop connector. Shorten wire if necessary, then solder connector to loop. Connect the orange wire (orange wire in photo) to a 12v switched source, with the provided 1/4" female connector shown below.



. Remove the engine bypass hose.

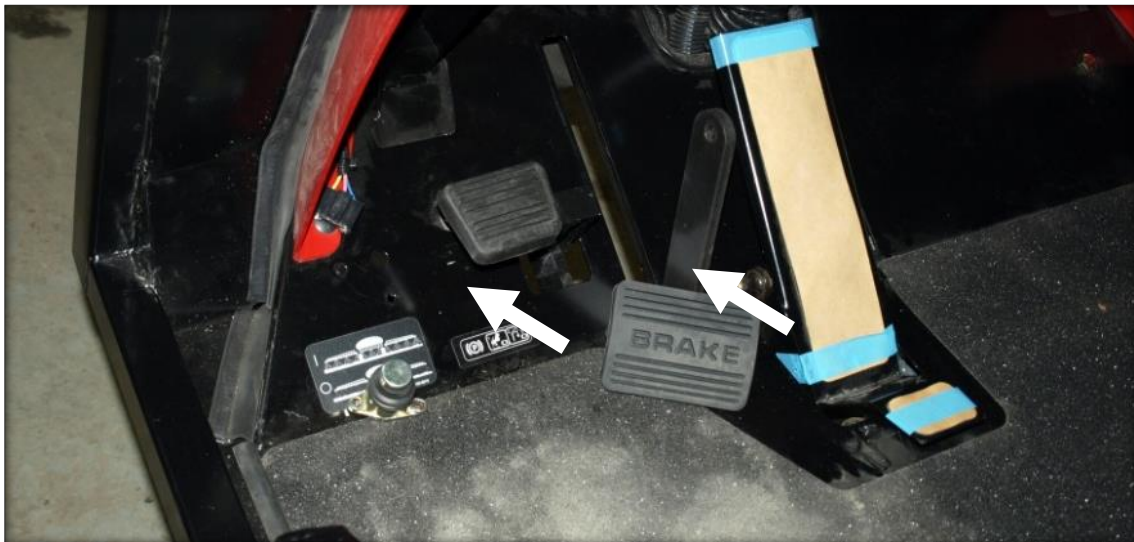




- . Take the provided bypass hose kit and connect one side of the 3/8" hose to the top open port. Use the provided HS-6 hose clamp to connect to the port.
- . Connect the other side of the 3/8" bypass hose kit to the bottom open port and connect with the provided HS-6 hose clamp.
- . Route the heater hoses located on the right side of the cab underneath the seat box and into the engine bay.
- . Route one of the hoses to the top bypass hose kit connection. Use the provided HS-6 hose clamp.
- . Route the remaining hose to the other bypass hose kit connection. Use the provided HS-6 hose clamp.



- . Use the provided zip ties to tie down the heater hoses so that they do not contact any moving parts on the engine.
- . Re-fill the engine antifreeze.
- . Leave the radiator cap off, start the engine, turn the heater fan onto high, turn the temperature setting to maximum heat to open the heater valve, and then run the engine at a PTO RPM to force the thermostat to cycle multiple times in order to remove air bubbles from the coolant system. Coolant will need to be topped up a few times during process. When HOT AIR is blowing from heater vents, the system has been properly purged.
- . Remove the brake pad from the brake pedal.
- . Un-plug the sprayer engage pedal harness, and then un-bolt the sprayer engage pedal from the floor.



- . Take the two pieces of 180-degree weather-stripping and install on either edge of the opening on the brake pedal as shown below.



. Take the cab floormat and position onto floor board of vehicle. Ensure that the pedals have adequate clearance for full range of motion. Notch and cut floormat if necessary. Use the provided fir tree fasteners to retain floormat to floor board. Drill 3/16" holes and then install fastener through floormat and steel.





- . Re-install the sprayer engage pedal, re-connect the harness, and re-install the brake pad onto the brake pedal
- . To ensure a better seal of all weather stripping and floor mat pieces, it is recommended that you use a black silicone seal to seal the cab parts to the tractor.
- . Route the air conditioner hoses located at the left C-post of the cab, underneath the seat box and into the engine bay.
- . Ensure the o-ring is properly seated into the fitting, then connect the # 10 fitting to the compressor.
- . Ensure the o-ring is properly seated into the fitting, then connect the # 8 fitting to the compressor.
- . Zip the a/c hoses so they do not contact any moving parts.
- . Connect the white wire with the hoses to the compressor clutch wire. Use the provided female bullet.
- . Ensure the fittings are all tight.

NOTE: At this stage, the air conditioning system is ready for pressurization. A licensed air conditioner installer must perform the install. The air conditioning system is designed to use 2 lbs of R134a coolant. The compressor is pre-filled with oil and should have 3.5 fluid oz of SP15.





. Take the eyewash tank removed from the 2-post ROPS removed earlier and bolt to the mount plate on the right side of the cab with the factory hardware.





## Toro MP5800-G ROPS Cab

\* Shown with optional Features \*



\*Operator must wear respirator when operating sprayer\*

### **Toro MP5800-G ROPS Cab**

**This ROPS is designed and built to fit the Toro MP5800-G gas model.**

**Designed and Built by:**

**Tektite Manufacturing Inc:**

**427 Buffalo Street**

**P.O. Box 639**

**Winkler, MB**

**R6W 4A8**

**Canada**

**PH: 204-331-3463**

**Fax: 204-331-4159**

**sales@tektite.ca**

**www.tektite.ca**

**One year standard product warranty provided by Tektite.**



Tektite Manufacturing Incorporated thanks you for purchasing a Toro MP5800-G ROPS Cab! Tektite has worked very hard to design and build this ROPS product and we hope that it provides you with many years of ROPS protection.

Tektite's ROPS products are designed to provide safe and dependable service during operation when they are properly maintained according to the instructions. Please read this operator manual carefully before using this ROPS product.

The photos/illustrations provided in this manual may not provide all the detail needed, and are for reference only.

All directions provided are from the reference point of the tractor seat facing the steering wheel. All left and right references are from this view point.

For reference, please fill in the information below. This will assist your dealer in providing service for this ROPS. It is advisable that this information be provided to your insurance company as well in the event that the tractor is lost or damaged.

**NOTE: Operator must wear full respirator when using spray vehicle.**

Vehicle Model: \_\_\_\_\_

ROPS Serial Number: \_\_\_\_\_

Date of Purchase: \_\_\_\_\_

Dealer Name: \_\_\_\_\_



## Tektite Limited Warranty

Tektite Manufacturing Inc. ("Tektite") warrants to the original purchaser (the "Claimant"), that Tektite products will be free from defective materials or workmanship, under normal use and service, for a period of (1) full year from the original invoice date. Tektite's liability under this Limited Warranty is limited to the repair or (at the discretion of Tektite) the replacement of those components of its products, which were manufactured by Tektite that are defective in materials or workmanship. Tektite shall have no liability under this Limited Warranty unless Tektite is notified of the defect during the stated Warranty Period.

Limitations and Exclusions: Tektite has no responsibility to a Claimant under this Limited Warranty or on any other basis for any of the following:

- a) defects caused, in whole or in part, by accident or misuse, negligence or failure to maintain the product or component;
- b) products or components sold to a customer on an "as is" basis;
- c) wiper blades, light bulbs, fuses, clear vinyl or other consumables;
- d) glass where the point of failure has not been preserved intact and delivered to Tektite for analysis of the cause of the failure;
- e) products or components which have been modified after shipping from Tektite to its customer;
- f) transportation charges for returned, repaired or replacement items;
- g) defects that are subject of a Tektite initiated recall where the Claimant fails to comply with the terms of the recall notice that comes to the attention of the Claimant;
- h) components of Tektite products that are manufactured by third parties (Tektite's only obligation in relation to such components shall be to accord to the Claimant the benefit of any transferable warranty accorded to Tektite by third party manufacturer);
- i) defects in workmanship or materials in products or components that are repaired or replaced by Tektite unless Tektite is notified of the new defect within the Warranty Period that applied to the original product or component that has been repaired or replaced;
- j) defects that result, in whole or in part, from inadequate engineering or specifications provided to Tektite by its customer;
- k) any actual or alleged deficiency in technical or engineering services or advice provided by Tektite to its customer whether provided for valuable consideration or otherwise;
- l) consequential damages, or any other damages whether foreseeable or not, resulting from the defect or any delay in remedying the defect;
- m) any breach or alleged breach of any implied warranty of merchantability or fitness for particular purpose of use;
- n) defects or part failure due to misuse or failure to follow recommended cab installation procedures; and
- o) travel expenses, including mileage.

This Limited Warranty expresses the entire obligation of Tektite, its officers, directors, agents and employees, to its customer or any Claimant in respect of any defect in workmanship, or materials of any product or component sold or manufactured by Tektite whether on grounds of breach of contract, negligence or other tortious liability, breach of express or implied warranty or other basis in law of any jurisdiction.

Acceptance by a customer of delivery of products of Tektite constitutes acceptance of this Limited Warranty in lieu of all other warranties express or implied including without limitation all implied warranties of merchantability or fitness for particular purpose or use and constitutes acceptance by customer of the exclusions and limitations of the liability of Tektite set out above. Once received, the cab should have ALL exterior cardboard, Styrofoam wrapping removed for immediate inspection of product to ensure that no damages have occurred during transportation. Outer coverings should stay off the cab and the cab be stored indoors in a controlled environment. The warranty card must be completed and returned to Tektite.

---

Warranty claims should be reported to [parts@tektite.ca](mailto:parts@tektite.ca). A warranty claim form and instructions will be provided at this time. Warranty work not pre-authorized by Tektite may not be covered by this warranty agreement. Labor rate and time allowances are fixed by Tektite. Approved warranty claims will be issued in the form of credits applied to customer account.





## Safety Precautions

### *Safety First*

Read these instructions carefully. It is essential that you read the instructions and safety regulations before you attempt to assemble or use the features that are on this cab/ROPS.

**Danger:** Indicates an immediate hazardous situation which, if not avoided, will result in death or serious injury.

**Warning:** Indicates a potentially hazardous situation which, if not avoided, may result in death or serious injury.

**Caution:** Indicates a potentially hazardous situation which, if not avoided, may result in minor or moderate injury.

**Important:** Indicates that cab or property damage may result if instructions are not carefully followed.

**NOTE:** All products are designed to give safe, dependable service if they are operated and maintained according to instructions. It is the owner's responsibility to be certain anyone operating this product reads this manual, and all other applicable manuals, to become familiar with this cab and all safety precautions. Failure to do so could result in serious personal injury or cab damage. If you have any questions, consult your dealer. Read and understand this manual before operation.

**NOTE:** A safe operator is the best assurance against accidents. All operators, no matter how experienced they may be, should read this operator manual and all other related manuals before attempting to operate features in this cab/ROPS and operate the base tractor. Please read the following section and pay particular attention to all safety recommendations contained in this manual and those labelled on the cab and on the tractor.



## **General Safety**

1. Never let an unqualified or untrained driver operate the spray vehicle.
2. Keep a fire extinguisher, with ABC rating securely fastened in the ROPS. Maintain it and be familiar with its use.
3. Do not carry passengers.
4. Never operate the spray vehicle in a closed building for a prolonged period. Ensure adequate ventilation is present, as engine exhaust fumes are poisonous and can kill.
5. Always keep sleeves, jackets or other loose clothing relatively tight and belted. Loose clothing may catch on moving parts and result in severe personal injury or death.
6. Provide a first-aid kit, securely attached inside of the ROPS for use in case of accident.
7. Never jump from the spray vehicle. There is a danger of tripping or falling on protruding parts.
8. Use steps and hand holds when mounting and dismounting the spray vehicle, or for servicing components too high to reach from the ground.
9. When seated in the ROPS, fasten seat belt before starting the engine. A proper seat belt must be worn at all times when using a ROPS.
10. Safety devices and shields are intended to protect operators from injury or death. Under no circumstances should they be modified, disabled or removed.
11. Charcoal filter should be replaced once per season.
12. When operating spray vehicle, operator must wear respirator with cab.

## **Operating Safety**

1. Always operate the spray vehicle controls while sitting in the operator's seat.
2. Lock seat in position and buckle seat belt before operating the spray vehicle.
3. Avoid abrupt sharp turns at high speeds.
4. On sloped terrain, do not make sharp turns as machine stability could be compromised.
5. Operate the spray vehicle smoothly, avoid abrupt starts and stops.
6. Keep all shields in place when operating the spray vehicle.
7. Do not operate the spray vehicle when you are tired, sick, or impaired.
8. Never operate the spray vehicle in confined areas; visibility next to the tractor is reduced. Injury to bystanders or damage to the ROPS or equipment may result.

## **Safety**

Carefully review the procedures given in this manual and the spray vehicle operator's manual with all operators annually. It is important that all operators become familiar with, and follow safety precautions. Operating instructions must be given to everyone using the tractor before operation and at least once yearly thereafter in compliance with OSHA Regulations 1928.57 (United States).



### **Safe Operation on Rough Terrain**

1. Drive the spray vehicle slowly on hillsides and curves to eliminate the danger of tipping. Avoid slopes which are too steep for safe operation. Avoid sharp uphill turns.
2. Always drive slowly enough over rough ground or obstructions. Drive at speeds slow enough to ensure your safety.
3. When driving out of a ditch, gully, or up a steep hillside, engage the clutch slowly. Avoid sharp uphill turns.
4. When descending steep grades, select a sufficiently low gear to maintain control with minimum use of braking.
5. Use caution when driving near the edge of a ditch or gully. It may cave in, causing the spray vehicle to roll over.
6. Be alert when operating near trees, slopes and around obstructions. Tree branches can cause damage to ROPS components.

### **Maintenance Safety**

1. Remove mud, crop residue, chains, and tools from steps and operator's platform. They may interfere with pedal operation or entry/exit from spray vehicle.
2. When servicing components are too high to reach from the ground use steps and handholds. Do not use fenders or shields that are not designed as steps.

### **Safe Highway Operation**

1. Before operating the spray vehicle on, or near, public roadways check with your local authorities for any local regulations that will affect you.
2. Equip towed implements with slow moving vehicle (SMV) signs when traveling on public roads.
3. Install additional lights on implement rear to safeguard against rear end collisions.
4. Use hazard warning flashers as required by law when transporting or driving on public roads. If the spray vehicle had warning flashers removed when mounting the ROPS, they must be replaced prior to operation on public roads.
5. Keep to the right, yielding right-of-way traffic, especially if pulling implements. Pull off the road and stop to allow motorists to pass. Drive on the road shoulder, if permitted by law.
6. Use extreme caution when pulling heavy loads at road speeds. Avoid hard application of the spray vehicle brakes at high speed.
7. Always drive slowly near curbs, approaches or ditches.
8. If equipped, ensure headlights are aligned so they will not blind the operator's of oncoming vehicles. If the spray vehicle is not equipped with turn signals and law requires them, install them prior to operating on or near public roads.



9. Use your turn signals, checking for traffic well in advance of turning. If the spray vehicle is not equipped with turn signals and law requires them, install them prior to operating on or near public roads.

### **Safety Decals**

1. Keep decals clean. Remove dirt with a wet clean cloth when necessary.
2. Replace safety decals if destroyed, missing, painted over or unreadable. If any safety decals are covered or obscured when the ROPS is mounted, it is recommended that you purchase replacement decals from the spray vehicle manufacturer. Mount them in a readable location at, or near, their original location before operating the spray vehicle.
3. New ROPS decals and spray vehicle decals are available from your spray vehicle dealer.

### **ROPS Safety**

1. Install the ROPS in accordance with Tektite mounting instructions. Failure to do so may affect the ROPS ability to withstand a roll over.
2. If the ROPS is subjected to alteration, structural damage or involved in an over turn accident, the entire structure must be replaced. Failure to do so may result in injury or death in the event of a roll over.
3. If the spray vehicle is not equipped with seat belts, purchase approved seat belts from the spray vehicle manufacturer or Tektite prior to operating the spray vehicle.
4. Always fasten seat belts prior to operating the spray vehicle.
5. Always operate the spray vehicle from the operator's seat.
6. Remove mud, crop residue, chains and tools from steps and operator's platform. They may interfere with pedal operation or entry/exit from the spray vehicle.
7. Remove all loose chains, tools, and equipment from the operator's platform. Failure to do so may cause injury or death in the event of a roll over.
8. Do not install the ROPS on a spray vehicle model that the ROPS is not designated for (compatible spray vehicle designations are printed on the ROPS serial number plate). The ROPS is designed specifically for individual models to ensure ROPS requirements will be met. Installing the ROPS on a non designated spray vehicle may result in injury or death.

### **Emergency Exits**

This ROPS has 2 exits, which may be used in an emergency: left and right side doors.



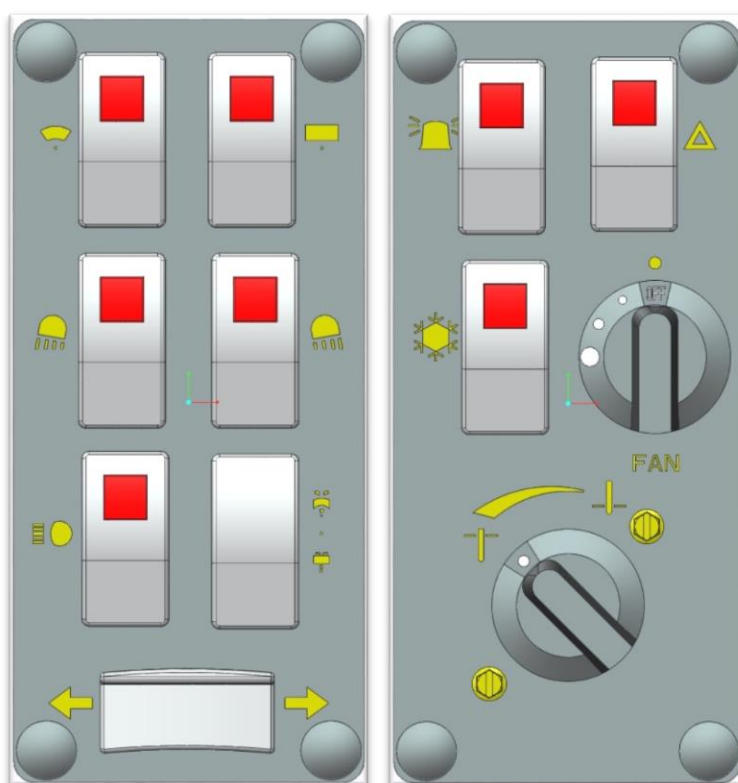


## Operating Instructions

### **Important**

The following section locates, identifies and briefly describes the functions of all cab controls. All operators should familiarize themselves with control location and function prior to operating the utility vehicle. Failure to do so may result in unsafe operation of the utility vehicle and possible injury or death to operators and bystanders.

There are two switch plates located in the headliner. The following switches are available and their functionality is described.



### **Left Switch Plate**

#### **1. Front Wiper Rocker Switch (standard)**

Low position: Off

High position: On

Note: indicator light activates when wiper is on.

#### **2. Rear Wiper Rocker Switch (optional)**

Low position: Off



High position: On

Note: indicator light activates when wiper is on.

### **3. Front Work Light Rocker Switch (optional)**

Low position: Off

High position: On

Note: indicator light activates when work lights are on.

### **4. Rear Work Light Rocker Switch (optional)**

Low position: Off

High position: On

Note: indicator light activates when work light is on.

### **5. Head Lights Rocker Switch (optional)**

Low position: Off

High position: On

Note: indicator light activates when head lights are on.

### **6. Front and Rear Washer Rocker Switch (optional)**

Low position: Momentary – On Rear Washer

Middle position: Off

High position: Momentary – On Front Washer

### **7. Turn Signal Rocker Switch (optional)**

Left position: On

Middle position: Off

Right position: On

## **Right Switch Plate**

### **1. Beacon Rocker Switch (standard)**

Low position: Off

High position: On

Note: indicator light activates when beacon is on.

### **2. Hazard Rocker Switch (optional)**

Low position: Off

High position: On

Note: indicator light activates when 4-way flashers are on.

### **3. Air Conditioner Rocker Switch (optional)**

Low position: Off

High position: On

Note: indicator light activates when air conditioner is on.



#### **4. Fan Rotary Switch (optional)**

Indicator mark above switch indicates whether fan is operational or not.

#### **5. Temperature Control Rotary Switch (optional)**

Indicator mark at lower left corner indicates current temperature setting. Rotate to increase heat output or to decrease heat output of heating system. When air conditioner is being used, it is recommended that the switch be at maximum cooling position.

### **Cab Circuit Protection**

The Tektite ROPS cab is wired to provide maximum protection against accidental battery rundown and circuit overload. A relay in the cab is ignition activated and prevents the operator from accidentally leaving fan motors, lights on after turning the tractor off and leaving for the day. A circuit breaker is provided to prevent the cab electrical components from drawing more power than they should be able to from a dead short. The cab electrical components are also fused individually, and the fuse block is located in the headliner, above the passenger seat on the right side. Locate access door labelled Fuses, and open for access to examine the fuses. A decal on the fuse block indicates which fuse is for which electrical option.



## **After your ROPS has been installed:**

Before starting a spray vehicle equipped with a Tektite ROPS:

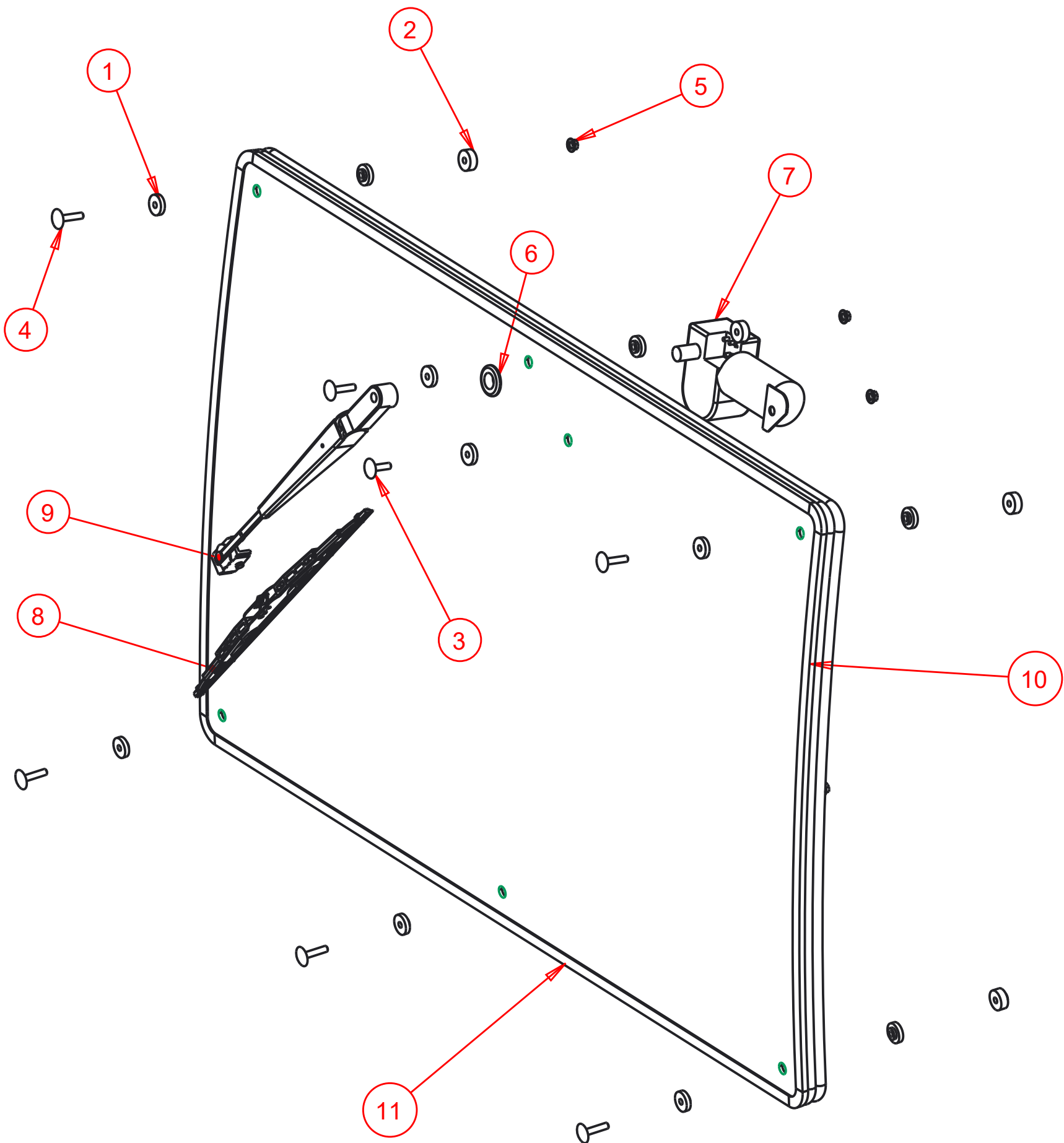
1. Clear the operator platform of all tools. Tools left in or around the ROPS and spray vehicle can cause operator interference which could lead to bodily injury and/or damage the machine.
2. Inspect the ROPS and spray vehicle to ensure all bolts are tight and re-tighten if required.
3. Ensure that all pedals, levers, and controls have adequate clearance for normal operation.
4. Ensure that all electrical components of both the ROPS and spray vehicle operate normally.
5. Ensure your door latches properly onto the striker pin. Immediately after installation, the ROPS frame may flex slightly from installation, and the door latch will need to be re-aligned for proper operation. Loosen the striker pin, striker mounting plate and door latch as necessary to get a proper alignment of the door striker.

## **Service Parts Breakdowns:**

Following are parts breakdowns for components that may require service parts replacement during the life of the ROPS. If you require replacement parts, please contact the dealer that you purchased the ROPS from and indicate which parts you require.



Index	Service Part #	File Name	Description	Qty
1	A00-0013	TEKT-0009	5MM Bushing	14
2	A00-0014	THICK-BUSHING	8MM Bushing	6
3	A00-0019	STEP-BOLT1-4X1	Step Bolt, 1/4" x 1", MB	1
4	A00-0020	STEP-BOLT1-4X1-1-4	Step Bolt, 1/4" x 1 1/4", MB	6
5	A00-0021	FLANGE-NUT-1-4	Flange Nut, 1/4", YD	7
6	A00-0033	315-080	Rear Wiper Shaft Grommet	1
7	A00-0043	WWF-MOTOR	WWF Wiper Motor, 1" Shaft	1
8	A00-0109	302-1160_BLADE	Wiper Blade, 16", Narrow Saddle	1
9	A00-0316	TEKT-ASM-052	WWF, Adjustable Radial Arm, 14" Length	1
10	T06-0007	TO5700-045	Front Window	1
11	T06-0009	TO5700-078-	Windshield Seal	1



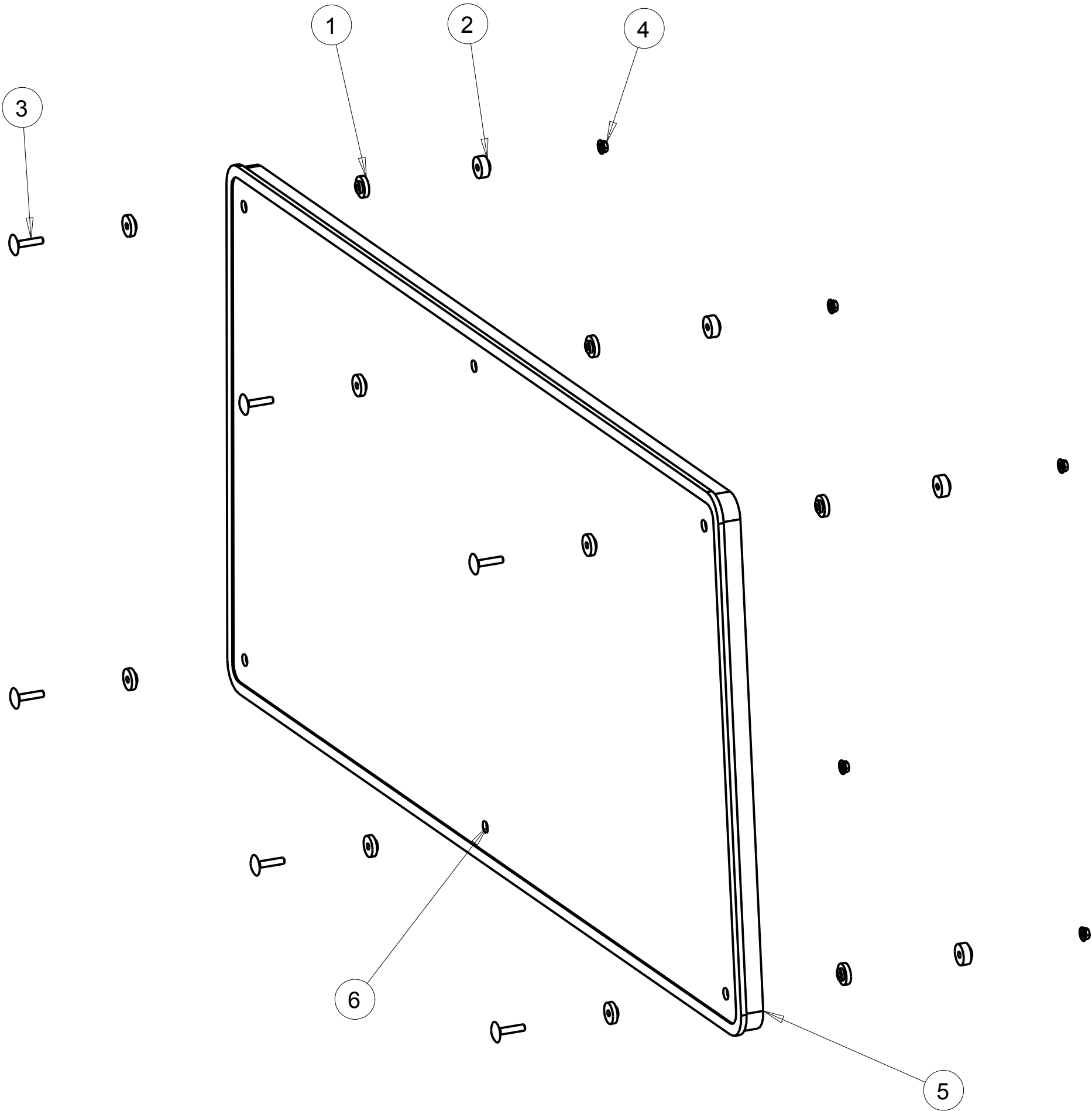
Notice of Confidentiality

This material is property of Tektite Manufacturing Inc and is not to be used by the recipient for any purpose other than the purpose for which it was transmitted. The material remains the property of Tektite and shall be returned upon request. The material may not be reproduced or disclosed to third parties without the written consent of Tektite.

Tolerances:  
Unless otherwise specified  
X.X = ± 1/16"  
Angular = ± 1.0°

Tektite Manufacturing Inc. 24157 Hwy 3, Box 639, Winkler MB, R6W 4A8, Canada				
Req'd:	CNC:	Description: Windshield Assembly		
Drawn By: Daryl Furkalo	Date: 2017-07-18	Units: Imp.	File Name: TO5700-ASM-015_OP	
Checked By:	Date:	Size: B		

Index	Service Part #	File Name	Description	Qty
1	A00-0013	TEKT-0009	5MM Bushing	12
2	A00-0014	THICK-BUSHING	8MM Bushing	6
3	A00-0020	STEP-BOLT1-4X1-1-4	Step Bolt, 1/4" x 1 1/4", MB	6
4	A00-0021	FLANGE-NUT-1-4	Flange Nut, 1/4", YD	6
5	T06-0005	TO5700-077	Rear Window Weather Seal	1
6	T06-0006	TO5700-044	Rear Window	1



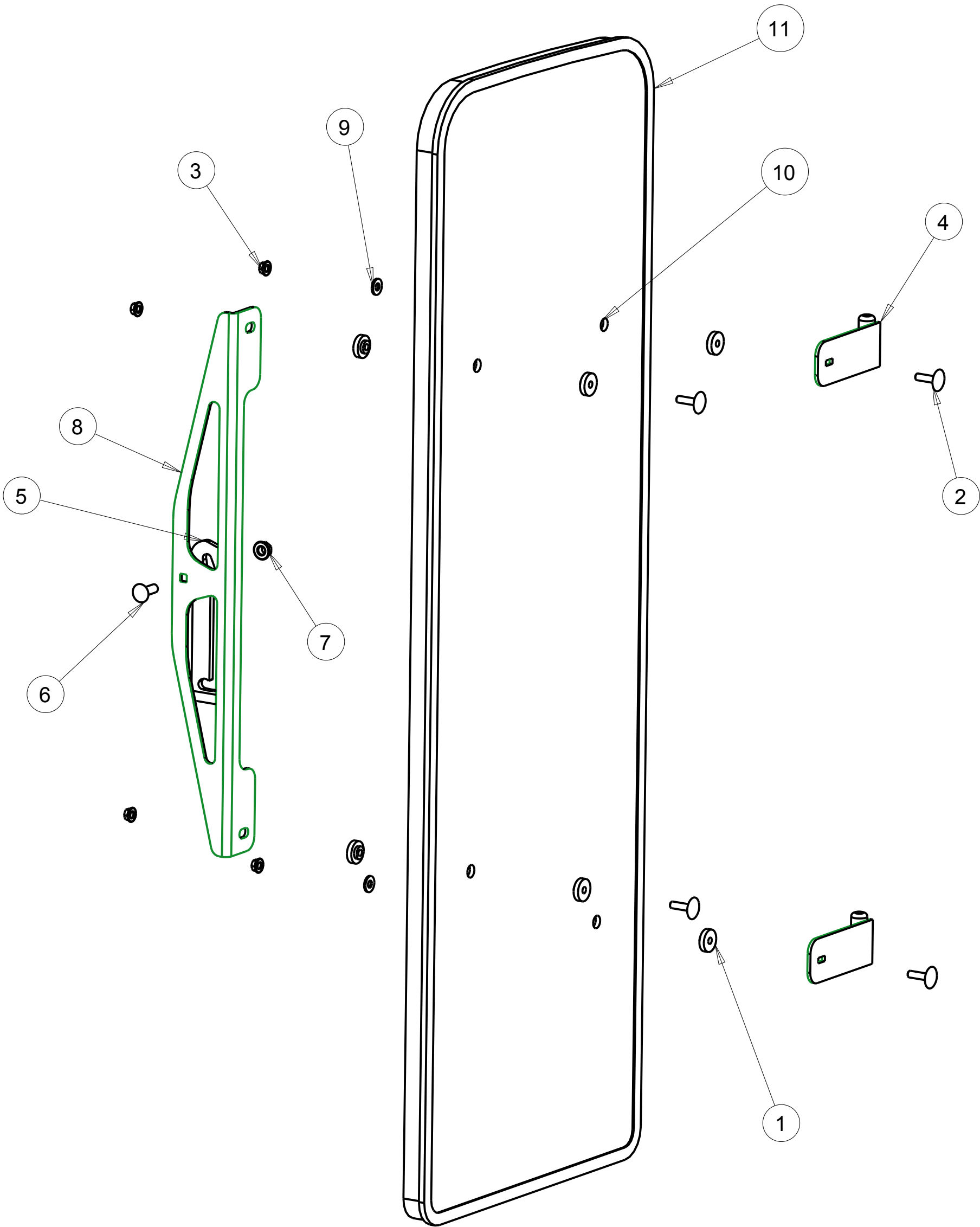
Notice of Confidentiality

This material is property of Tektite Manufacturing Inc and is not to be used by the recipient for any purpose other than the purpose for which it was transmitted. The material remains the property of Tektite and shall be returned upon request. The material may not be reproduced or disclosed to third parties without the written consent of Tektite.

**Tolerances:**  
Unless otherwise specified  
  
X.X = ± 1/16"  
Angular = ± 1.0 °

Tektite Manufacturing Inc. 24157 Hwy 3, Box 639, Winkler MB, R6W 4A8, Canada				
Req'd:	CNC:	Description: Rear Window Assembly		
Drawn By: Daryl Furkalo	Date: 2010-09-01	Units: Imp.	File Name: TO5700-ASM-014_OP	
Checked By:	Date:	Size: B		

Index	Service Part #	File Name	Description	Qty
1	A00-0013	TEKT-0009	5MM Bushing	8
2	A00-0019	STEP-BOLT1-4X1	Step Bolt, 1/4" x 1", MB	4
3	A00-0021	FLANGE-NUT-1-4	Flange Nut, 1/4", YD	4
4	A00-0044	TEKT-ASM-002	Side Window Hinge Weldment	2
5	A00-0057	TEKT-0020MIR	Side Window Latch, L60776	1
6	A00-0058	CARRIAGE_BOLT-5-16X1	Bolt, Carriage, 5/16"x 1", YD	1
7	A00-0059	FLANGE-NUT-5-16	Flange Nut, 5/16", YD	1
8	A00-0087	TEKT-0028	Side Window Slider Bracket	1
9	A00-0119	WASHER_1-4	Washer, Flat, 1/4"	2
10	T06-0003	TO5700-046	Side Window Glass	1
11	T06-0008	TO5700-076R	Side Window Weather Seal	1



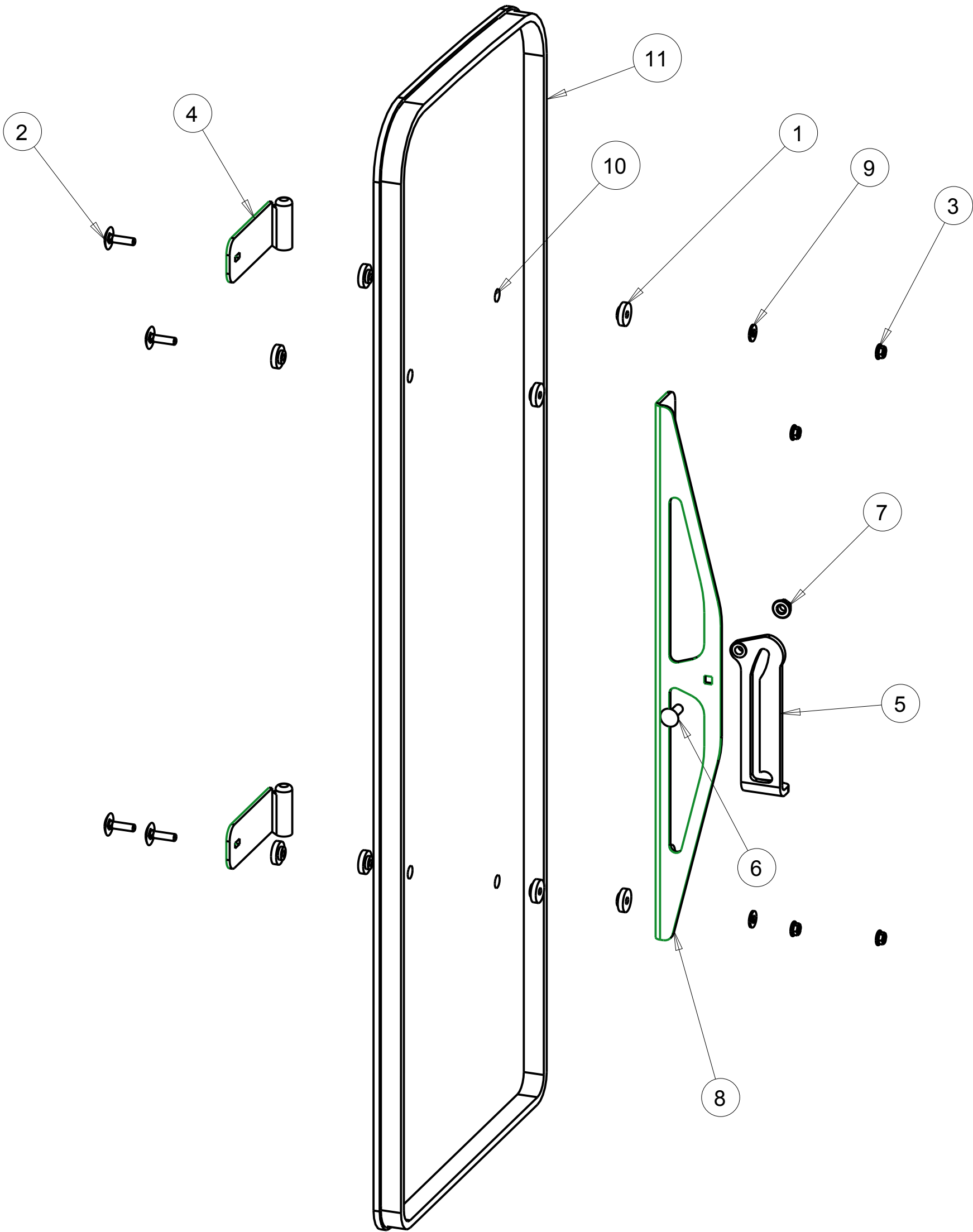
Notice of Confidentiality

This material is property of Tektite Manufacturing Inc and is not to be used by the recipient for any purpose other than the purpose for which it was transmitted. The material remains the property of Tektite and shall be returned upon request. The material may not be reproduced or disclosed to third parties without the written consent of Tektite.

**Tolerances:**  
Unless otherwise specified  
X.X = ± 1/16"  
Angular = ± 1.0 °

Tektite Manufacturing Inc. 24157 Hwy 3, Box 639, Winkler MB, R6W 4A8, Canada				
Req'd:	CNC:	Description: Right Side Window Assembly		
Drawn By: Daryl Furkalo	Date: 2010-09-01	Units: Imp.	File Name: TO5700-ASM-013_OP	
Checked By:	Date:	Size: B		

Index	Service Part #	File Name	Description	Qty
1	A00-0013	TEKT-0009	5MM Bushing	8
2	A00-0019	STEP-BOLT1-4X1	Step Bolt, 1/4" x 1", MB	4
3	A00-0021	FLANGE-NUT-1-4	Flange Nut, 1/4", YD	4
4	A00-0046	TEKT-ASM-002R	Side Window Hinge Right	2
5	A00-0056	TEKT-0020	Side Window Latch, L60775	1
6	A00-0058	CARRIAGE_BOLT-5-16X1	Bolt, Carriage, 5/16"x 1", YD	1
7	A00-0059	FLANGE-NUT-5-16	Flange Nut, 5/16", YD	1
8	A00-0087	TEKT-0028	Side Window Slider Bracket	1
9	A00-0119	WASHER_1-4	Washer, Flat, 1/4"	2
10	T06-0003	TO5700-046	Side Window Glass	1
11	T06-0008	TO5700-076	Side Window Weather Seal	1



Notice of Confidentiality

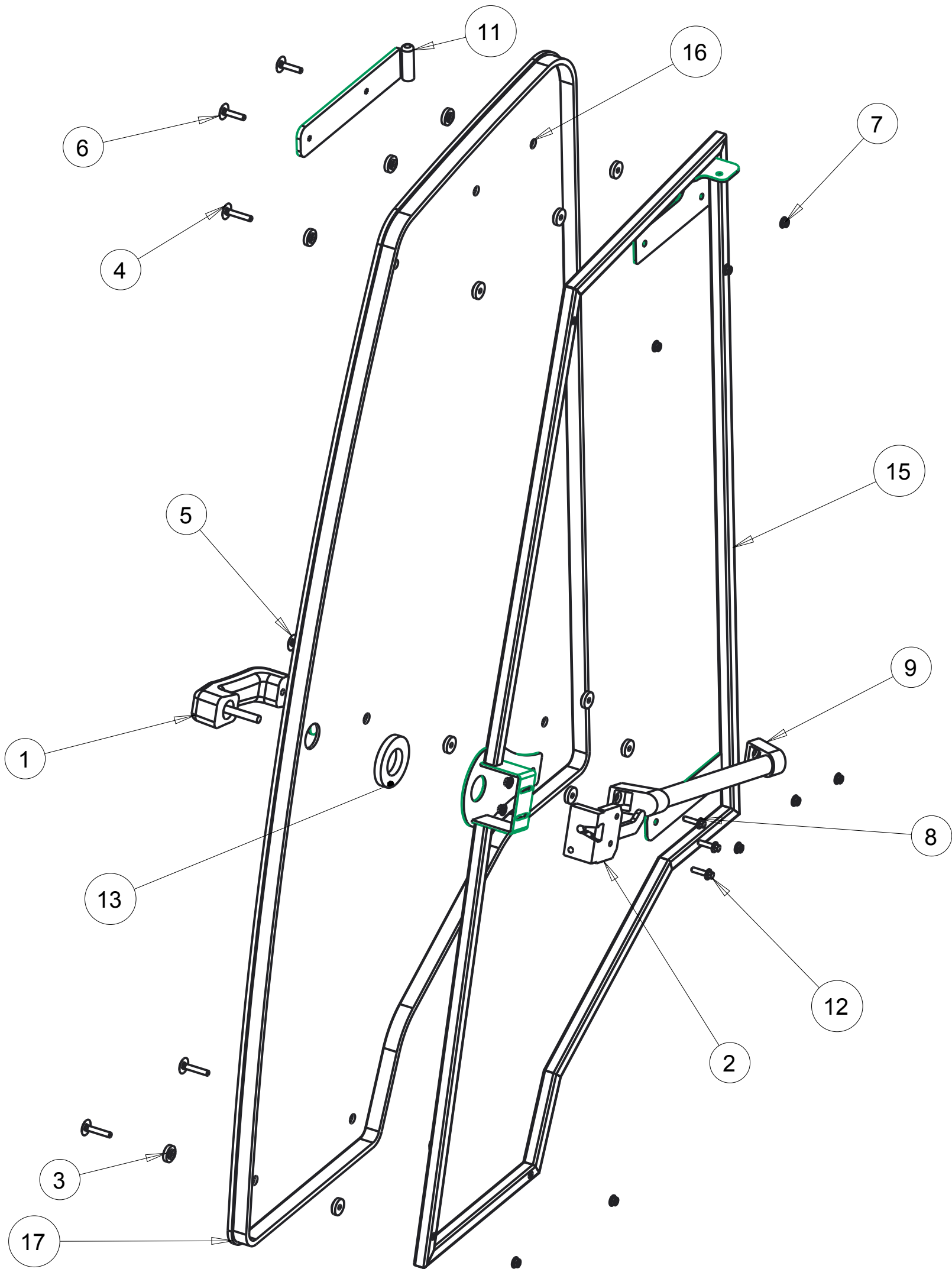
This material is property of Tektite Manufacturing Inc and is not to be used by the recipient for any purpose other than the purpose for which it was transmitted. The material remains the property of Tektite and shall be returned upon request. The material may not be reproduced or disclosed to third parties without the written consent of Tektite.

Tolerances:  
Unless otherwise specified  
X.X = ± 1/16"  
Angular = ± 1.0 °

Tektite Manufacturing Inc. 24157 Hwy 3, Box 639, Winkler MB, R6W 4A8, Canada				
Req'd:	CNC:	Description: Left Side Window Assembly		
Drawn By: Daryl Furkalo	Date: 2010-09-01	Units: Imp.	File Name: TO5700-ASM-012_OP	
Checked By:	Date:	Size: B		



Index	Service Part #	File Name	Description	Qty
1	A00-0001	DLP-HANDLE	Outside Push Button Handle	1
2	A00-0003	RIGHT-LATCH	Suicide Door Right Latch	1
3	A00-0013	TEKT-0009	5MM Bushing	17
4	A00-0018	STEP-BOLT1-4X1-1-2	Step Bolt, 1/4" x 1 1/2", MB	3
5	A00-0019	STEP-BOLT1-4X1	Step Bolt, 1/4" x 1", MB	1
6	A00-0020	STEP-BOLT1-4X1-1-4	Step Bolt, 1/4" x 1 1/4", MB	4
7	A00-0021	FLANGE-NUT-1-4	Flange Nut, 1/4", YD	10
8	A00-0022	FLANGE_BOLT_M6X25	Flange Bolt, M6x25, YD	1
9	A00-0040	REID-RST-160-RST-163	Grab Handle	1
10	A00-0041	TEKTITE-DECAL	Tektite Cab Decal - Solid White	1
11	A00-0042	TEKT-ASM-001R	Right Cab Door Hinge Weldment, Upper	1
12	A00-0118	FLANGE_BOLT_1-4X1	Flange Bolt, 1/4" x 1", YD	2
13	A00-0177	TEKT-0068	Handle Washer Spacer	1
14	A00-0229	TEKT-ASM-029R	Right Door Hinge Weldment, Lower	1
15	T06-0002	TO5700-ASM-008_RT	Right Door Frame Weldment	1
16	T06-0004	TO5700-048	Door Glass	1
17	T06-0011	TO5700-075R	Door WeatherSeal	1



**Tektite Manufacturing Inc.**  
24157 Hwy 3, Box 639, Winkler MB, R6W 4A8, Canada

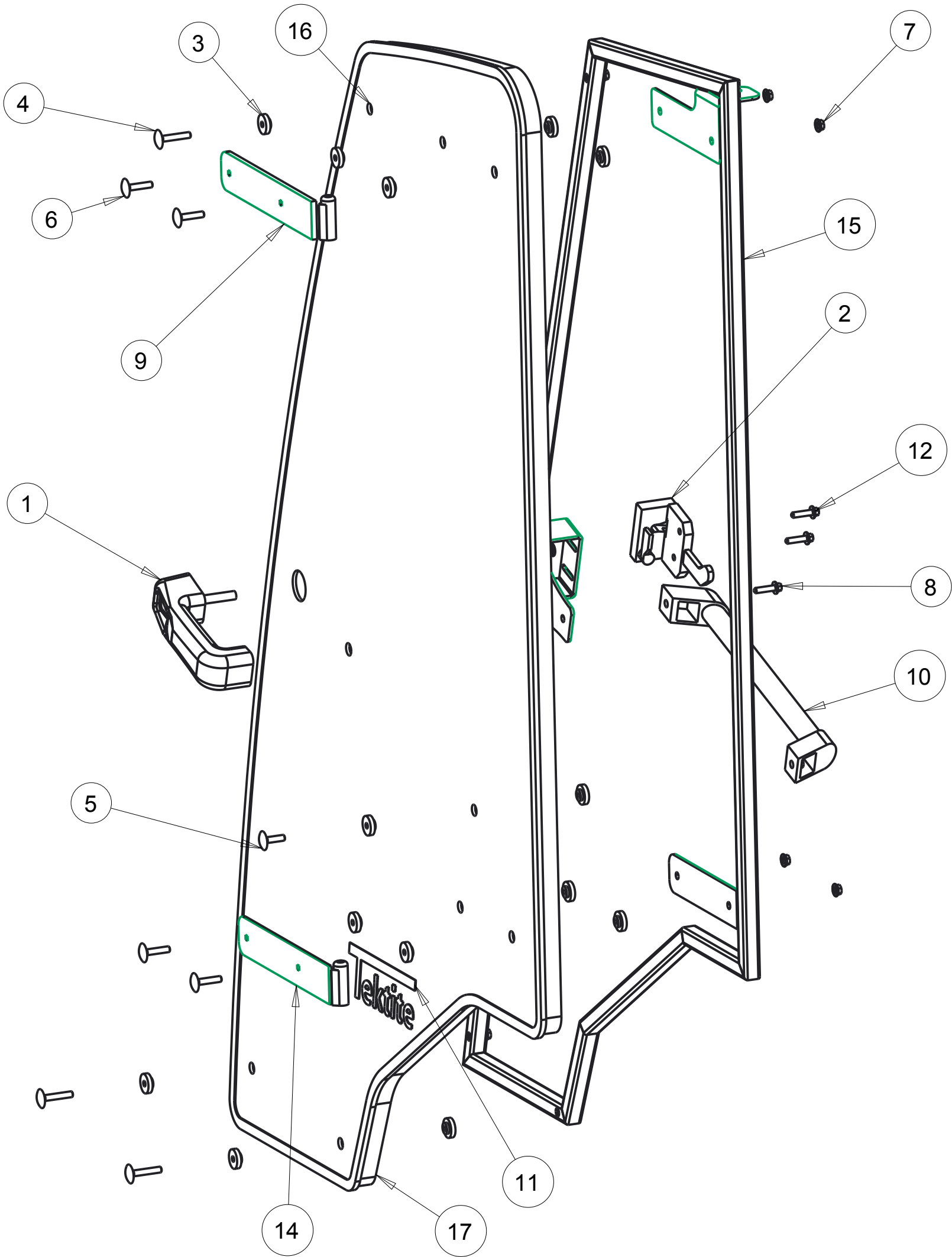
Notice of Confidentiality

This material is property of Tektite Manufacturing Inc and is not to be used by the recipient for any purpose other than the purpose for which it was transmitted. The material remains the property of Tektite and shall be returned upon request. The material may not be reproduced or disclosed to third parties without the written consent of Tektite.

**Tolerances:**  
Unless otherwise specified  
X.X =  $\pm 1/16"$   
Angular =  $\pm 1.0^\circ$

Req'd:		CNC:		Description: <b>Right Door Assembly</b>	
Drawn By: <i>Daryl Furkalo</i>		Date: 2014-04-02		Units: <b>Imp.</b>	File Name: TO5700-ASM-007_RT_OP
Checked By:		Date:		Size: <b>B</b>	

Index	Service Part #	File Name	Description	Qty
1	A00-0001	DLP-HANDLE	Outside Push Button Handle	1
2	A00-0002	LEFT-LATCH	Suicide Door Left Latch	1
3	A00-0013	TEKT-0009	5MM Bushing	17
4	A00-0018	STEP-BOLT1-4X1-1-2	Step Bolt, 1/4" x 1 1/2", MB	3
5	A00-0019	STEP-BOLT1-4X1	Step Bolt, 1/4" x 1", MB	1
6	A00-0020	STEP-BOLT1-4X1-1-4	Step Bolt, 1/4" x 1 1/4", MB	4
7	A00-0021	FLANGE-NUT-1-4	Flange Nut, 1/4", YD	10
8	A00-0022	FLANGE_BOLT_M6X25	Flange Bolt, M6x25, YD	1
9	A00-0039	TEKT-ASM-001	Left Door Hinge Weldment, Upper	1
10	A00-0040	REID-RST-160-RST-163	Grab Handle	1
11	A00-0041	TEKTITE-DECAL	Tektite Cab Decal - Solid White	1
12	A00-0118	FLANGE_BOLT_1-4X1	Flange Bolt, 1/4" x 1", YD	2
13	A00-0177	TEKT-0068	Handle Washer Spacer	1
14	A00-0228	TEKT-ASM-029	Left Door Hinge Weldment, Lower	1
15	T06-0001	TO5700-ASM-008	Left Door Frame Weldment	1
16	T06-0004	TO5700-048	Door Glass	1
17	T06-0011	TO5700-075	Door WeatherSeal	1



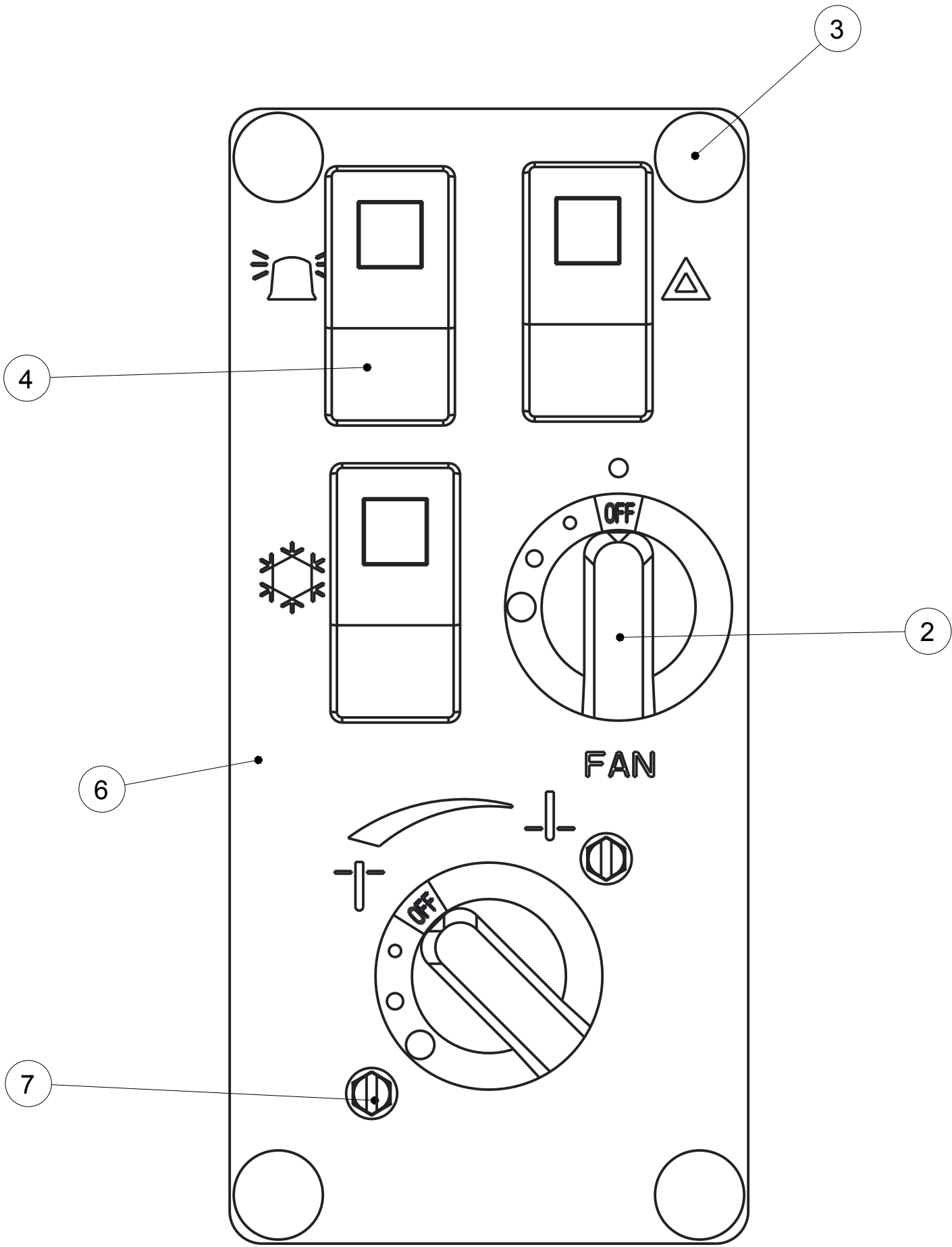
Notice of Confidentiality

This material is property of Tektite Manufacturing Inc and is not to be used by the recipient for any purpose other than the purpose for which it was transmitted. The material remains the property of Tektite and shall be returned upon request. The material may not be reproduced or disclosed to third parties without the written consent of Tektite.

**Tolerances:**  
Unless otherwise specified  
X.X = ± 1/16"  
Angular = ± 1.0°

Tektite Manufacturing Inc. 24157 Hwy 3, Box 639, Winkler MB, R6W 4A8, Canada					
Req'd:	CNC:	Description: Left Door Assembly			
Drawn By: Daryl Furkalo	Date: 2014-04-02	Units: Imp.	File Name: TO5700-ASM-007_OP		
Checked By:	Date:	Size: B			

Index	Service Part #	File Name	Description	Qty
1	A00-0007	FAN-SWITCH	4-Position Fan Switch	1
2	A00-0054	TEKT-0018	Fan Speed Control Knob	2
3	A00-0055	TEKT-0019	Fir Tree Fastener	4
4	A00-0065	TEKT-ASM-005	On-Off Switch w/Lens	3
5	A00-0252	TEKT-0117	Water Valve Directly on Switch	1
6	A00-0253	TEKT-0119	Right Switchplate Decal, 2014 Update	1
7	A00-0282	SCREW-3-16X3-4	Screw, Self-Tap, 3/16" x 3/4"	2
8	A00-0283	TEKT-0118	Right Switchplate, 2014 Redesign	1



SCALE 1.000

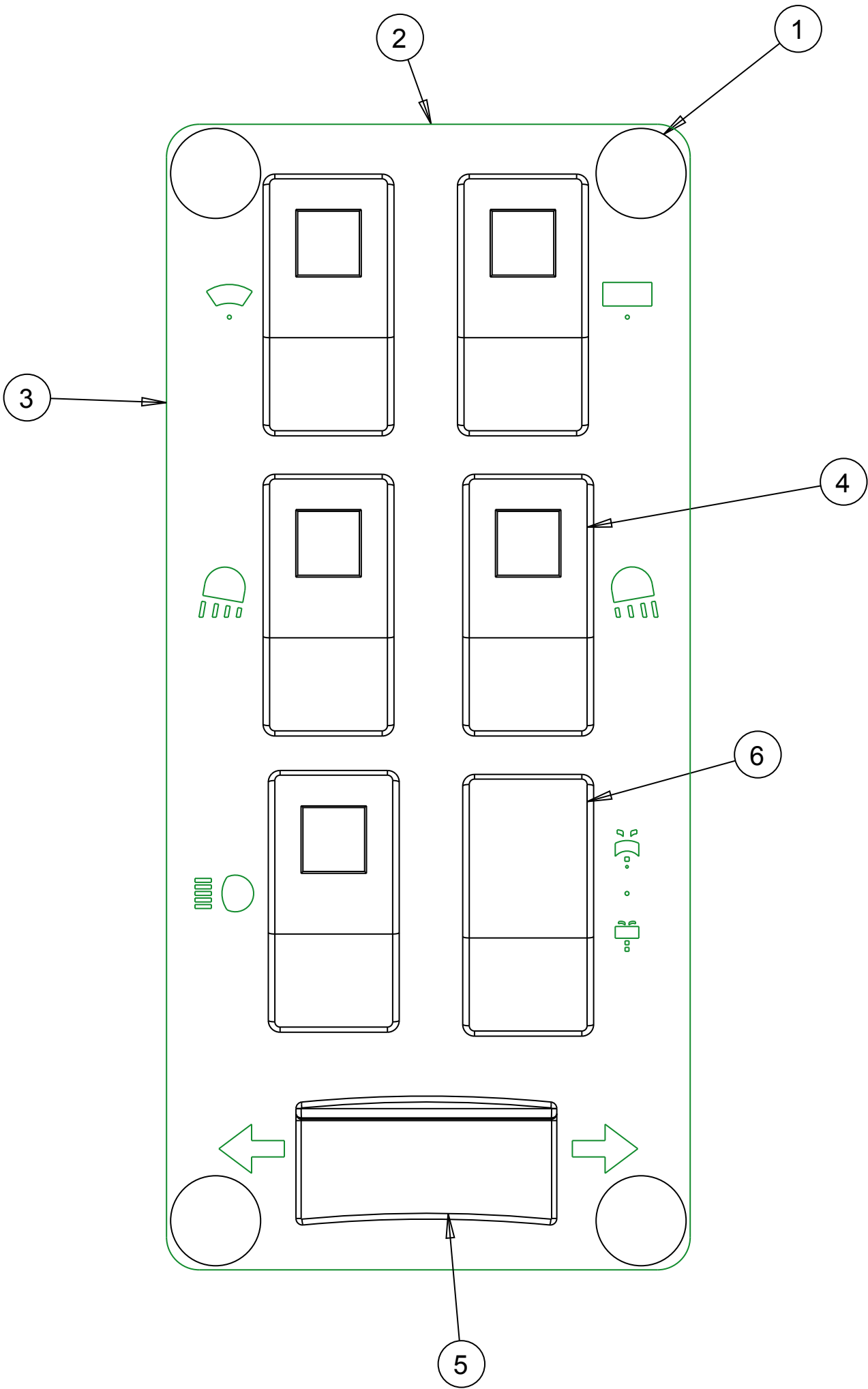
Notice of Confidentiality

This material is property of Tektite Manufacturing Inc and is not to be used by the recipient for any purpose other than the purpose for which it was transmitted. The material remains the property of Tektite and shall be returned upon request. The material may not be reproduced or disclosed to third parties without the written consent of Tektite.

Tolerances:  
Unless otherwise specified  
X.X = ± 1/16"  
Angular = ± 1.0°

Tektite Manufacturing Inc. 24157 Hwy 3, Box 639, Winkler MB, R6W 4A8, Canada				
Req'd:	CNC:	Description: New Valve Design Switch Plate, 2014		
Drawn By: Daryl Furkalo	Date: 2014-02-05	Units: Imp.	File Name: TEKT-ASM-O3O	
Checked By:	Date:	Size: B		

Index	Service Part #	File Name	Description	Qty
1	A00-0055	TEKT-0019	Fir Tree Fastener	4
2	A00-0063	LEFT-CAB-SWITCHPLATE	Left Switchplate	1
3	A00-0064	LEFT-CAB-SWITCHPLATE-DECAL	Left Switchplate Decal	1
4	A00-0065	TEKT-ASM-005	On-Off Switch w/Lens	5
5	A00-0066	TEKT-ASM-006	On-Off-On Rocker No Lens	1
6	A00-0067	TEKT-ASM-007	Mom-Off-Mom Rocker Switch	1



SCALE 1.000

Notice of Confidentiality

This material is property of Tektite Manufacturing Inc and is not to be used by the recipient for any purpose other than the purpose for which it was transmitted. The material remains the property of Tektite and shall be returned upon request. The material may not be reproduced or disclosed to third parties without the written consent of Tektite.

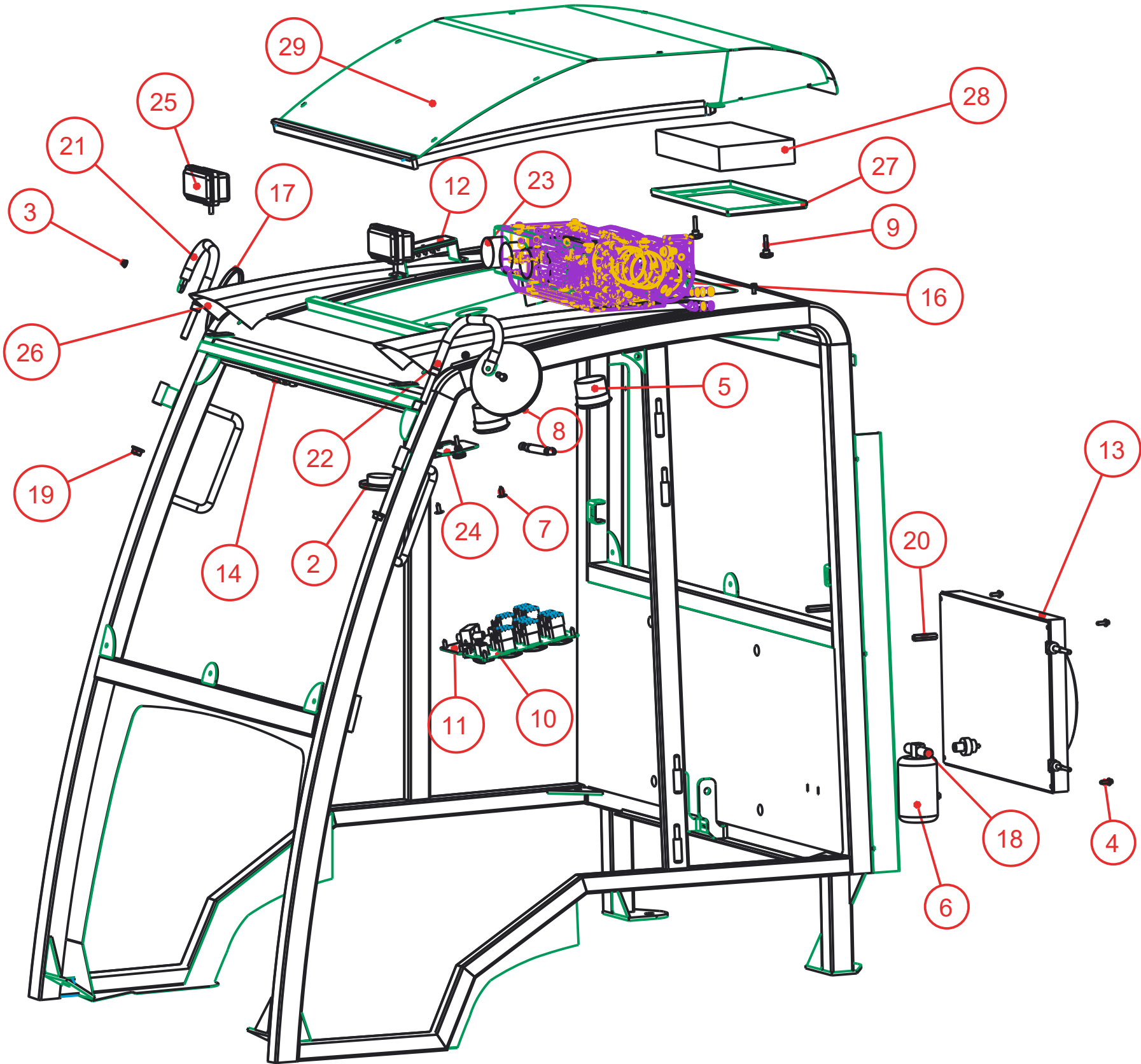
Tolerances:  
Unless otherwise specified  
X.X = ± 1/16"  
Angular = ± 1.0 °

Tektite Manufacturing Inc. 24157 Hwy 3, Box 639, Winkler MB, R6W 4A8, Canada				
Req'd:	CNC:	Description: Operator Manual Switch Plate Left		
Drawn By: Daryl Furkalo	Date: 2009-03-09	Units: Imp.	File Name: LEFT-SWITCHPLATE-ASM	
Checked By:	Date:	Size: B		





Index	Service Part #	File Name	Description	Qty
1		TO5700-ASM-021	Cab Weldment Assembly	1
2	A00-0016	TEKT-0075	Domelight LED	1
3	A00-0021	FLANGE-NUT-1-4	Flange Nut, 1/4", YD	4
4	A00-0023	FLANGE_BOLT_1-4X3-4	Flange Bolt, 1/4" x 3/4", YD	4
5	A00-0025	BALL-LOUVER	2 1/2" Ball Louver	4
6	A00-0028	TEKT-0088	Red Dot Drier	1
7	A00-0055	TEKT-0019	Fir Tree Fastener	2
8	A00-0059	FLANGE-NUT-5-16	Flange Nut, 5/16", YD	2
9	A00-0070	REID-KBP-262-KBP-265	Knob, Knurled, 1/4"	2
10	A00-0071	LEFT-SWITCHPLATE-ASM	Left Switchplate Assembly	1
11	A00-0072	TEKT-ASM-030	Right Switchplate Assembly, 2014 Update	1
12	A00-0074	TEKT-ASM-004	Fuse Block Assembly	1
13	A00-0078	TEKT-ASM-025	Condenser Assembly	1
14	A00-0084	TEKT-0070	Gas Shock	2
15	A00-0085	TEKT-0069	Gas Shock Stud	2
16	A00-0105	R-2300-2_090902	Heater A/C Blower Unit, 2300	1
17	A00-0141	ROUND_MIRROR_6_INCH	External 6" Mirror	2
18	A00-0171	TEKT-0089	Binary Switch	1
19	A00-0179	FLANGE-NUT-1-2	1/2" Nut	2
20	A00-0192	COUPLER-NUT_1-4X2	Coupler Nut, 1/4" x 2"	4
21	A00-0202	TEKT-ASM-009R	Right Mirror Bracket Weldment	1
22	A00-0203	TEKT-ASM-009	Left Mirror Bracket Weldment	1
23	A00-0204	TEKT-ASM-011	Louver Hose Mount Plate, 2300	1
24	A00-0222	TO5700-ASM-022	Fuse Block Cover Assembly	1
25	A00-0371	TEKT-0175	New LED Work Light (Blazer Intl)	2
26	A00-0389	KUBX2380-NOSTRIL	Plastic Light Nostril	2
27	T06-0012	TO5700-066	Outer Filter Cover	1
28	T06-0015	TO5700-059	Air Filter	1
29	T06-0021	TO5700-ASM-023	Roof Cap Assembly, Oct 2013	1



Tektite Manufacturing Inc.  
24157 Hwy 3, Box 639, Winkler MB, R6W 4A8, Canada

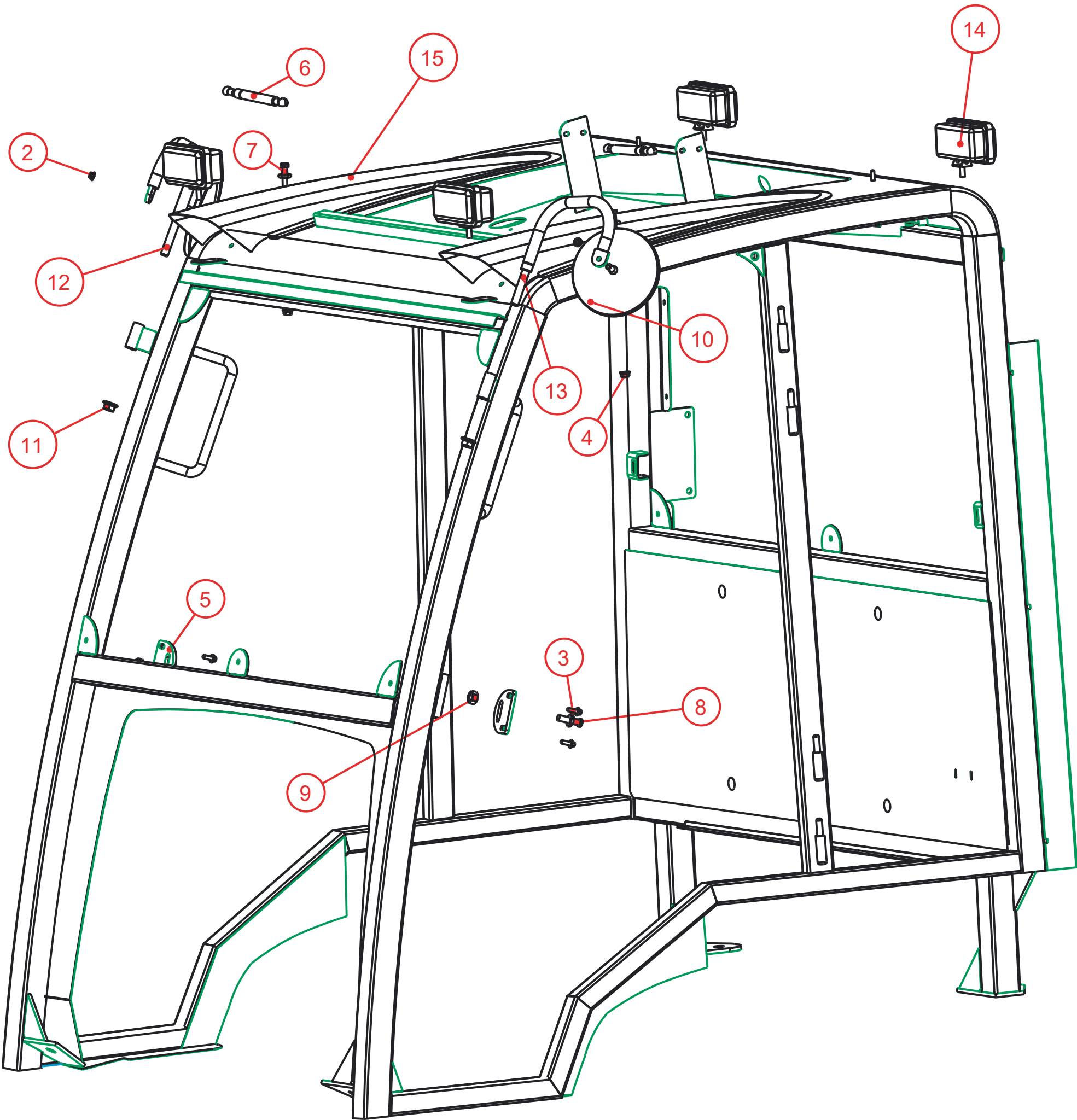
Notice of Confidentiality

This material is property of Tektite Manufacturing Inc and is not to be used by the recipient for any purpose other than the purpose for which it was transmitted. The material remains the property of Tektite and shall be returned upon request. The material may not be reproduced or disclosed to third parties without the written consent of Tektite.

Tolerances:  
Unless otherwise specified  
X.X = ± 1/16"  
Angular = ± 1.0°

Req'd:	CNC:	Description: <b>Cab Assembly Parts Oct 2013</b>		
Drawn By: <i>Daryl Furkalo</i>	Date: 2017-07-06	Units: <b>Imp.</b>	File Name: TO5700-ASM-024_OP	
Checked By:	Date:	Size: <b>B</b>		

Index	Service Part #	File Name	Description	Qty
1		TO5800G-ASM-006		1
2	A00-0021	FLANGE-NUT-1-4	Flange Nut, 1/4", YD	2
3	A00-0023	FLANGE_BOLT_1-4X3-4	Flange Bolt, 1/4" x 3/4", YD	4
4	A00-0059	FLANGE-NUT-5-16	Flange Nut, 5/16", YD	2
5	A00-0061	TEKT-0021	Striker Mounting Plate	2
6	A00-0084	TEKT-0070	Gas Shock	2
7	A00-0085	TEKT-0069	Gas Shock Stud	2
8	A00-0101	STRIKER-PIN	Striker Pin	2
9	A00-0103	HEX-NUT-M12X1	Hex Nut, M12 x 1.0, YD	2
10	A00-0141	ROUND_MIRROR_6_INCH	External 6" Mirror	2
11	A00-0179	FLANGE-NUT-1-2	1/2" Nut	2
12	A00-0202	TEKT-ASM-009R	Right Mirror Bracket Weldment	1
13	A00-0203	TEKT-ASM-009	Left Mirror Bracket Weldment	1
14	A00-0371	TEKT-0175	New LED Work Light (Blazer Intl)	4
15	A00-0389	KUBX2380-NOSTRIL	Plastic Light Nostril	2



Tektite Manufacturing Inc.  
24157 Hwy 3, Box 639, Winkler MB, R6W 4A8, Canada

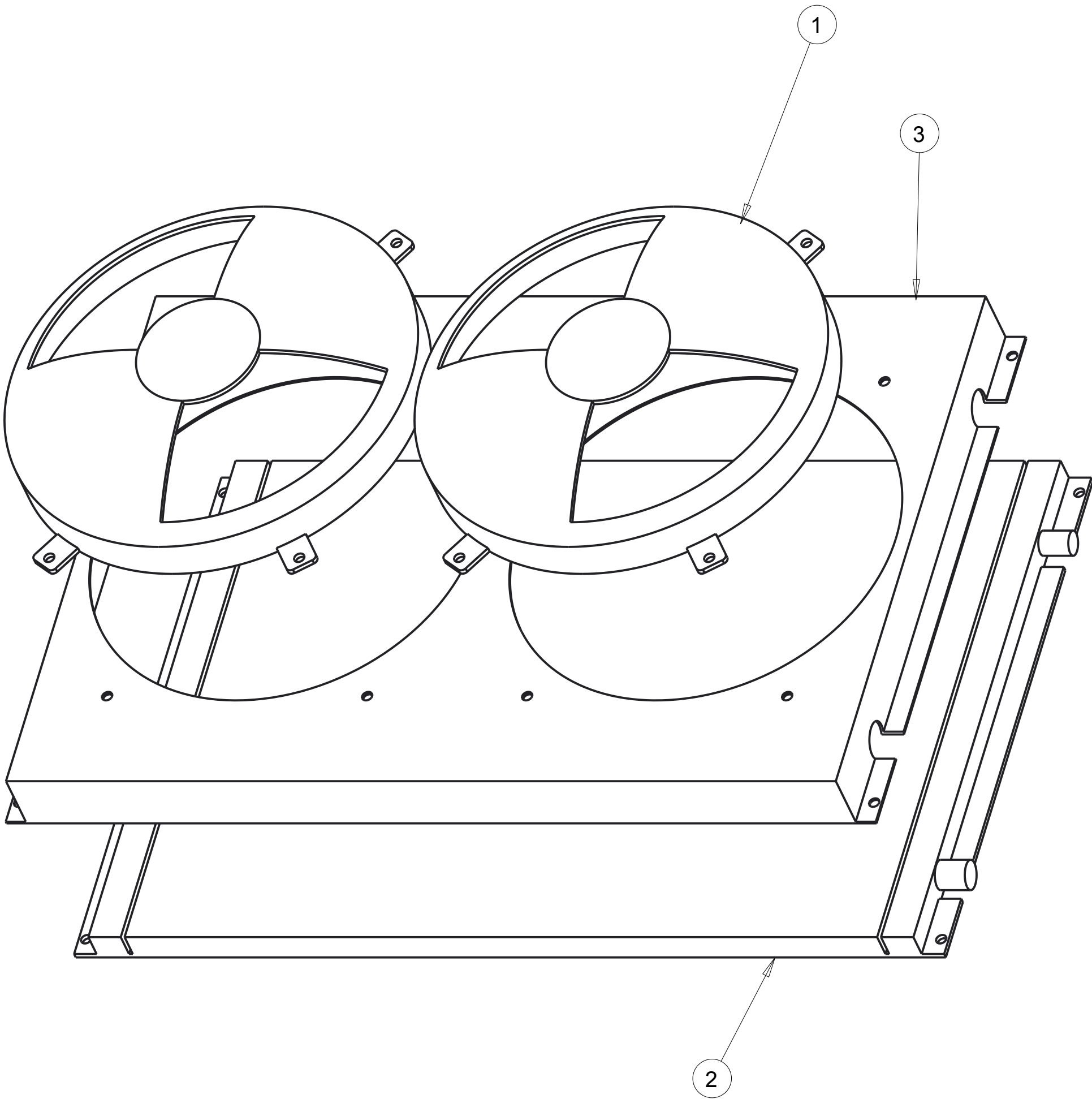
Notice of Confidentiality

This material is property of Tektite Manufacturing Inc and is not to be used by the recipient for any purpose other than the purpose for which it was transmitted. The material remains the property of Tektite and shall be returned upon request. The material may not be reproduced or disclosed to third parties without the written consent of Tektite.

Tolerances:  
Unless otherwise specified  
  
X.X = ± 1/16"  
Angular = ± 1.0°

Req'd:				CNC:				Description:			
Drawn By:				Date:				Units:			
Daryl Furkalo				2017-07-04				Imp.			
Checked By:				Date:				Size:			
								B			
								File Name:			
								TO5800G-ASM-007			

Index	Service Part #	File Name	Description	Qty
1	A00-0166	TEKT-0103	Condensor Fan	2
2	A00-0220	TEKT-0101	Base Condenser Coil	1
3	A00-0221	TEKT-0102	Condensor Assembly Steel Shroud	1



Notice of Confidentiality

This material is property of Tektite Manufacturing Inc and is not to be used by the recipient for any purpose other than the purpose for which it was transmitted. The material remains the property of Tektite and shall be returned upon request. The material may not be reproduced or disclosed to third parties without the written consent of Tektite.

**Tolerances:**  
Unless otherwise specified  
  
X.X = ± 1/16"  
Angular = ± 1.0°

Tektite Manufacturing Inc. 24157 Hwy 3, Box 639, Winkler MB, R6W 4A8, Canada					
Req'd:	CNC:	Description: Condensor Assembly Breakdown			
Drawn By: Daryl Furkalo	Date: 2013-07-04	Units: Imp.	File Name: TEKT-ASM-O26		
Checked By:	Date:	Size: B			