

Kubota BX23S MY 24 ROPS Cab



Please note: Shown with optional features.

Kubota KuBX23S-33 ROPS Cab

This ROPS cab is designed and built to fit:
Kubota BX23S Model Year 2024 and newer

Designed and built by:

Tektite Manufacturing Inc:
P.O. Box 639, 427 Buffalo Street
Winkler, MB, Canada
R6W 4A8
PH: 204-331-3463
parts@tektite.ca

One-year standard product warranty provided by Tektite Manufacturing Inc.
www.tektite.ca / www.tektitecabs.com



DO NOT PROCEED FURTHER UNTIL YOU HAVE READ THE INFORMATION BELOW.

- 1) Always wear personal protective equipment.
- 2) A minimum of two people is necessary to safely install the cab.
- 3) This ROPS cab is heavy. A lift assist device such as an overhead hoist or high lift forklift is required.
- 4) Ensure your work area is well ventilated. The installation requires the starting of the tractor which will produce dangerous carbon monoxide fumes.
- 5) Read through the entire installation manual first.
- 6) Follow the installation instructions in order.
- 7) Reading the operators manual prior to using the ROPS cab.

Tektite Manufacturing Incorporated thanks you for purchasing a Kubota BX23S ROPS cab! Tektite has worked very hard to design and build this ROPS product and we hope that it provides you with many years of protection.

Tektite's products are designed to provide safe and dependable service during operation when they are properly maintained according to the instructions. Please read this installation manual carefully before installing and using this product.

The photos/illustrations provided in this manual may not provide all the detail needed and are for reference only.

All directions provided are from the reference point of the tractor seat facing the steering wheel. All left and right references are from this viewpoint.

For reference, please fill in the information below. This will assist your dealer in providing service for this product. It is advisable that this information be provided to your insurance company as well in the event that the tractor is lost or damaged.

Vehicle Model: _____

Tektite Serial Number: _____

Date of Purchase: _____

Dealer Name: _____

Standard Parts List:**Mounting Parts Bag:**

Description	Qty
Bolt, Hex, 5/8" x 3", Gr. 8, YD	4
Washer, Flat, 1/4" thick	4
Nut, Flange, 5/8", Gr. 8, YD	4
Bolt, Hex, 1/2" x 4 1/2", Gr. 8	2
Wire Loop, 1/4", Yellow	2
Wire Loop, 3/8"	2
Pedal Lever 180 Degree O-rubber, 4" Length	2
Fir Tree Retainer Fastener	2
Plug Button, 1/2"	4

Loose Components:

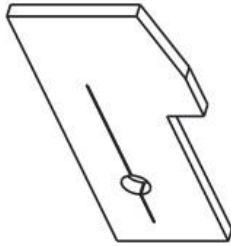
Description	Qty
Under-seat upholstery	1
Front Mounting Brackets (Isolators PRE-INSTALLED)	L&R
Rear Mounting Brackets (Isolators PRE-INSTALLED)	2
90° Elbow Radiator Hose (pre-installed with fuel cap and hose clamps)	1
Pedal Floormat	1

Heater Parts List:

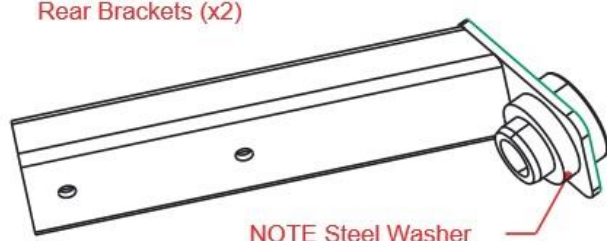
Grommets, 1" hole, 3/8"ID Hose (315-080)	2
Hose Clamps, HS-6	2
Zip Ties, Standard	6

Parts List Optional Winter Front:

Description	Qty
Winter Front	1
Button Snap Back w/screw	4

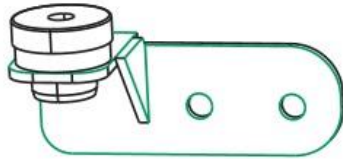


Cab Floormat

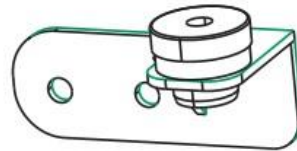


Rear Brackets (x2)

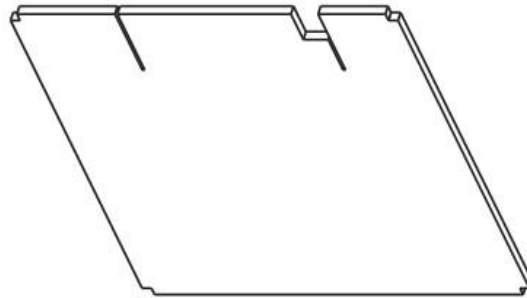
NOTE Steel Washer
Location!



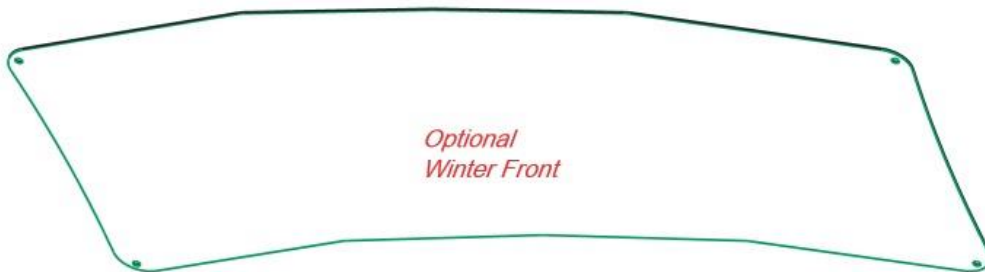
Left Front
Bracket



Right Front
Bracket



Under Seat
Upholstery



Optional
Winter Front

Installation Instructions:

Prior to starting, park tractor in a well-ventilated location, lower all tractor attachments.

- Remove the seat assembly from the tractor.
- Take the under-seat upholstery and position it under the seat. Ensure there is adequate clearance for the seat and controls, and then glue into place.



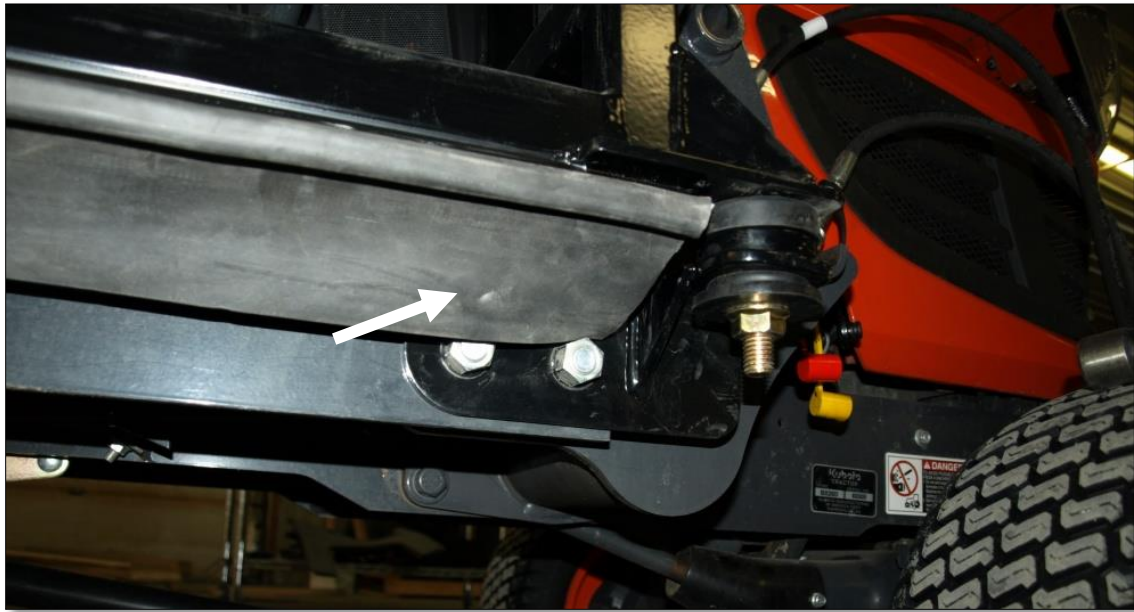
- Disconnect rear flasher light harness and remove two-post ROPS from machine. Save fasteners to re-use later.
- Locate the back-hoe seat position retainer on the rear crossmember of the tractor and un-bolt and remove. Save the fasteners.
- Locate the two bolts in the loader sub-frame shown below and remove. Ensure that the sub-frame members are properly supported.



- Take the left front bracket along with the factory hex bolts and nuts and loosely attach the bracket to the sub-frame. Do NOT torque until after the cab is installed.



- Repeat for the right front bracket.



- Take the left rear bracket and slide into the open socket where the 2-post ROPS was installed. Using the factory hardware, bolt the rear bracket into place.



- Take the right rear bracket and slide into the open socket where the 2-post ROPS was installed. Use the factory hardware and bolt the rear bracket into place.



- On the left side of the operator foot platform, pull back the tractor floormat to expose the opening around the park brake pedal. Take the provided floormat piece and slide through pedal down towards the platform. Glue into place with contact cement. Re-install main floormat with provided fir tree fasteners.



- Un-bolt and remove the left and right fender grab handles from the tractor.

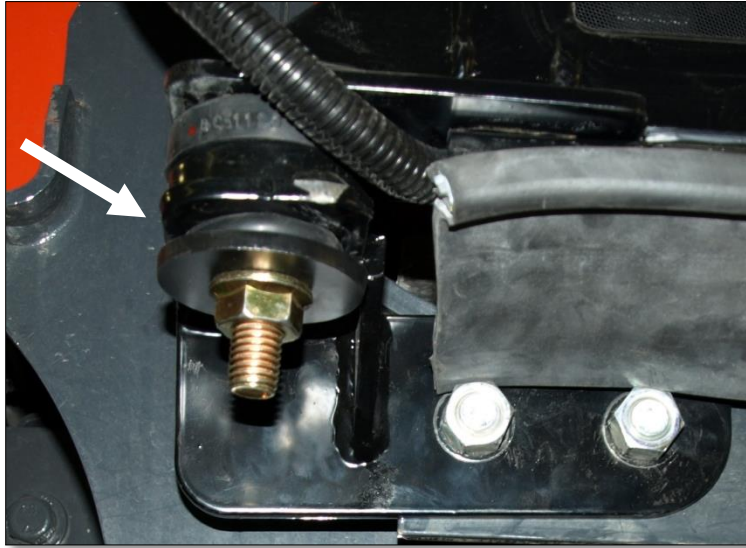


- Drill out each of the four holes to $\frac{1}{2}$ ".
- Insert a $\frac{1}{2}$ " plug button into each hole from the grab handle holes that were just drilled out.
- Return to the cab to install lift brackets next. To remove the gas shock on the left cab door, slide a flat screwdriver underneath the small clip on the end cap that must be pulled UP order to pop the shock off of the ball stud. **The shock will release very easily when this is accomplished.** Lift the door assembly straight up and off of the cab and put aside for now. Take one cab lift bolt, a $\frac{1}{2}$ " x 4 $\frac{1}{2}$ " hex bolt and fasten to the tab with weld nut at the top of the b-post. Repeat for the other side.



- Using a chain or lift strap, connect the lift bolts to an over head hoist or forklift.

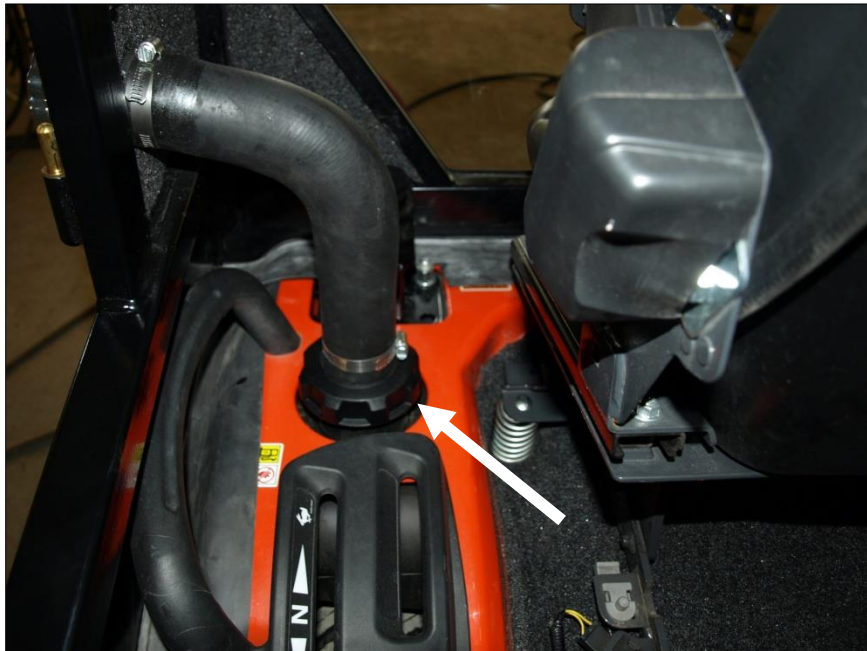
- Un-bolt the cab from the front and rear shipping brackets and lift the cab off of the shipping pallet. Lift cab over tractor. Slowly lower down until the front and rear isolators contact the mounting plates. The cab should be lowered straight down.
- Using one 5/8" x 3" bolt, heavy flat washer, and flange nut, start the front bracket isolator fasteners. NOTE: the heavy flat washer is used on the bottom of the isolator underneath the bracket.



- Once all isolators are started, torque the isolator fasteners to 200 ft-lbs. The M12 rear nuts should be torqued to 98 ft-lbs. The front bracket M14 fasteners should be torqued to 130 ft-lbs.
- Remove lift strap and lift bolts.
- Route the wire harness from the front left A-post towards the battery. Connect the 10GA red wire to the positive side of the battery with the provided 1/4" loop connector. Shorten wire if necessary, install connector, then solder connect to the wire. Connect the 10GA black wire to the negative side of the battery with the provided 1/4" loop connector. Shorten the wire if necessary, install connector, then solder connector to the wire. The cab options are individually fused behind the switch plate.
- Take the flasher lights from the 2-post ROPS and attach to tabs on rear of cab. Reconnect harness to tractor harness.



- Take the SMV sign from ROPS and attach to rear of the backhoe.
- Remove off the factory fuel cap. Take the pre-assembled fuel fill assembly inside of the cab and check for tolerance to install onto fuel cap. If the hose is too long, loosen clamps and shorten as necessary to required length. Re-install hose and tighten fuel cap down onto fuel fill nozzle. Tractor fuelling is now accomplished outside of the cab on the left side. The rubber washer MUST be between the steel ring on the weldment and the top of the fuel neck on the tractor. THIS will ensure that diesel fuel will NOT leak into the cab.



- Take the cotter pin off of the pin located at the bottom of the 2-post ROPS that normally locks the rotated seat into position. Take the long pin to rear of the cab and install between the two pin mounting plates at the bottom of the rear window crossmember.



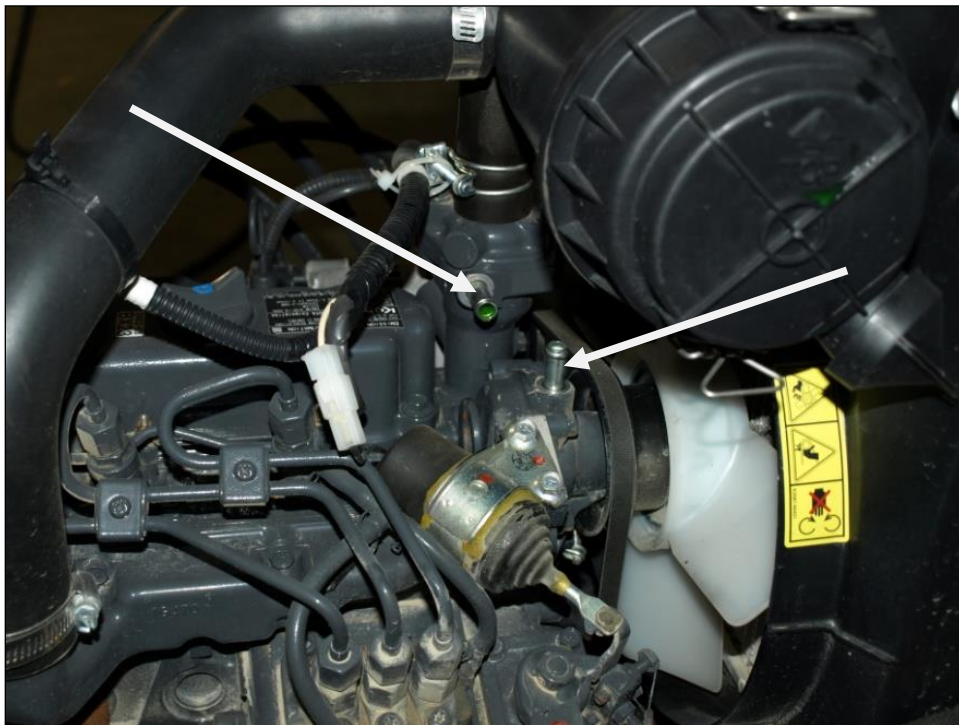
NOTE: In order to spin seat, the seat must be slid **ALL** the way forward first. Then release the front latch and lift seat while spinning into place. Seat must come up high enough in order to clear rear tabs for mounting seat in TLB operation position.

- Two 1" holes need to be drilled into the foot platform on the right side for the heater hoses. Install the provided 1" grommets, then run the heater hoses down through the holes and towards the front of the tractor.

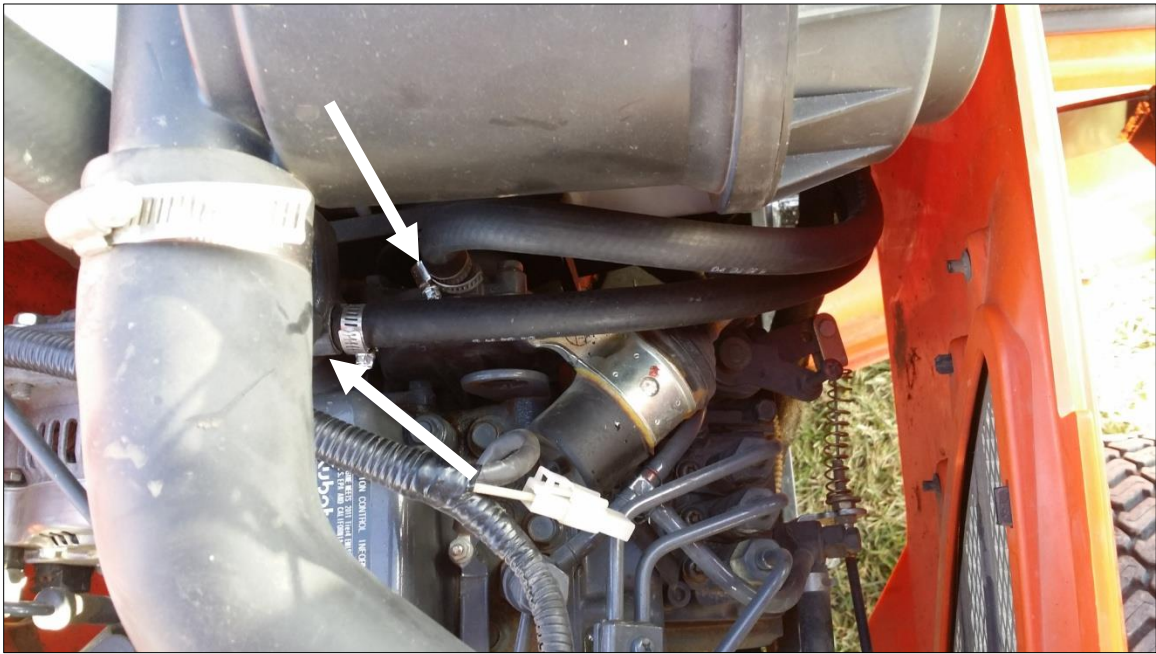


For the water heater, please proceed with the following set of instructions.

- Drain engine antifreeze.
- Remove bypass hose on engine.



- Route 3/8" ID hoses from bypass fittings to the heater. Connect hoses to the fittings with provided HS-6 hose clamps.



- Re-fill tractor with engine coolant.
- Start engine, turn heater on and run engine to purge system of air. Run with radiator cap off and at higher throttle in order to get thermostat to open and cycle coolant into radiator system. It will be necessary to top coolant up a few times to properly fill system.
- To ensure a proper weather seal, use a black silicone sealant around all small open cracks between the cab weather stripping and the tractor components.
- The throttle lever comes very close to the heater. It is necessary to adjust the location of the idle position so that there more room for your hand. Bend the lever back so idle throttle position has more clearance to the heater.



Optional Winter Front:

- Remove the air intake cover shroud from tractor.
- Located the plastic panel shown in the next photo on the left side and remove from the tractor.



- Remove the plastic panel from the right side as well.
- Take the cover shroud and position the winter front over the plastic shroud. Center it on the shroud and mark the button locations on one side of the shroud.
- Drill 1/16" holes and then fasten button snap backs to the plastic shroud.



- Wrap the winter front around the shroud, ensure it is tight, and mark the holes for the opposite side retainers.
- Drill 1/16" holes and fasten button snap backs to the plastic shroud.
- Install winter front onto shroud



- Re-install the shroud onto machine.

NOTE: the cab for the BX is designed to provide protection from the winter elements. The tractor air intake draws air through the cab. If cab is used in the summer, remove all side windows and doors to ensure engine receives enough fresh air.

NOTE: in the winter, two plastic panels beside the battery can be removed to allow air intake from underneath the tractor. Order the Tektite BX80 winter front kit to block the air intake screen to force all fresh air into the engine to come from below the tractor. This will reduce the amount of cold air rushing into the cab in winter! Winter front **MUST** be removed in warm weather, otherwise engine may overheat.

Kubota BX23S MY 24 ROPS Cab



Please note: Shown with optional features.

Kubota KuBX23S-33 ROPS Cab

This ROPS cab is designed and built to fit:
Kubota BX23S Model Year 2024 and newer

Designed and built by:

Tektite Manufacturing Inc:

P.O. Box 639, 427 Buffalo Street

Winkler, MB, Canada

R6W 4A8

PH: 204-331-3463

parts@tektite.ca

One-year standard product warranty provided by Tektite Manufacturing Inc.

www.tektite.ca / www.tektitecabs.com



DO NOT PROCEED FURTHER UNTIL YOU HAVE READ THE INFORMATION BELOW.

- 1) Always wear personal protective equipment.
- 2) A minimum of two people is necessary to safely install the cab.
- 3) This ROPS cab is heavy. A lift assist device such as an overhead hoist or high lift forklift is required.
- 4) Ensure your work area is well ventilated. The installation requires the starting of the tractor which will produce dangerous carbon monoxide fumes.
- 5) Read through the entire installation manual first.
- 6) Follow the installation instructions in order.
- 7) Reading the operators manual prior to using the ROPS cab.

Tektite Limited Warranty

Tektite Manufacturing Inc. ("Tektite") warrants to the original purchaser (the "Claimant"), that Tektite products will be free from defective materials or workmanship, under normal use and service, for a period of (1) full year from the original invoice date. Tektite's liability under this Limited Warranty is limited to the repair or (at the discretion of Tektite) the replacement of those components of its products, which were manufactured by Tektite that are defective in materials or workmanship. Tektite shall have no liability under this Limited Warranty unless Tektite is notified of the defect during the stated Warranty Period.

Limitations and Exclusions: Tektite has no responsibility to a Claimant under this Limited Warranty or on any other basis for any of the following:

- a) defects caused, in whole or in part, by accident or misuse, negligence or failure to maintain the product or component;
- b) products or components sold to a customer on an "as is" basis;
- c) wiper blades, light bulbs, fuses, clear vinyl or other consumables;
- d) glass where the point of failure has not been preserved intact and delivered to Tektite for analysis of the cause of the failure;
- e) products or components which have been modified after shipping from Tektite to its customer;
- f) transportation charges for returned, repaired or replacement items;
- g) defects that are subject of a Tektite initiated recall where the Claimant fails to comply with the terms of the recall notice that comes to the attention of the Claimant;
- h) components of Tektite products that are manufactured by third parties (Tektite's only obligation in relation to such components shall be to accord to the Claimant the benefit of any transferable warranty accorded to Tektite by third party manufacturer);
- i) defects in workmanship or materials in products or components that are repaired or replaced by Tektite unless Tektite is notified of the new defect within the Warranty Period that applied to the original product or component that has been repaired or replaced;
- j) defects that result, in whole or in part, from inadequate engineering or specifications provided to Tektite by its customer;
- k) any actual or alleged deficiency in technical or engineering services or advice provided by Tektite to its customer whether provided for valuable consideration or otherwise;
- l) consequential damages, or any other damages whether foreseeable or not, resulting from the defect or any delay in remedying the defect;
- m) any breach or alleged breach of any implied warranty of merchantability or fitness for particular purpose of use;
- n) defects or part failure due to misuse or failure to follow recommended cab installation procedures; and
- o) travel expenses, including mileage.

This Limited Warranty expresses the entire obligation of Tektite, its officers, directors, agents and employees, to its customer or any Claimant in respect of any defect in workmanship, or materials of any product or component sold or manufactured by Tektite whether on grounds of breach of contract, negligence or other tortious liability, breach of express or implied warranty or other basis in law of any jurisdiction.

Acceptance by a customer of delivery of products of Tektite constitutes acceptance of this Limited Warranty in lieu of all other warranties express or implied including without limitation all implied warranties of merchantability or fitness for particular purpose or use and constitutes acceptance by customer of the exclusions and limitations of the liability of Tektite set out above. Once received, the cab should have ALL exterior cardboard, Styrofoam wrapping removed for immediate inspection of product to ensure that no damages have occurred during transportation. Outer coverings should stay off the cab and the cab be stored indoors in a controlled environment. The warranty card must be completed and returned to Tektite.

Warranty claims should be reported to parts@tektite.ca. A warranty claim form and instructions will be provided at this time. Warranty work not pre-authorized by Tektite may not be covered by this warranty agreement. Labor rate and time allowances are fixed by Tektite. Approved warranty claims will be issued in the form of credits applied to customer account.

Safety Precautions

Safety First

Read these instructions carefully. It is essential that you read the instructions and safety regulations before you attempt to assemble or use the features that are on this cab/ROPS.

Danger: Indicates an immediate hazardous situation which, if not avoided, will result in death or serious injury.

Warning: Indicates a potentially hazardous situation which, if not avoided, may result in death or serious injury.

Caution: Indicates a potentially hazardous situation which, if not avoided, may result in minor or moderate injury.

Important: Indicates that cab or property damage may result if instructions are not carefully followed.

NOTE: All products are designed to give safe, dependable service if they are operated and maintained according to instructions. It is the owner's responsibility to be certain anyone operating this product reads this manual, and all other applicable manuals, to become familiar with this cab and all safety precautions. Failure to do so could result in serious personal injury or cab damage. If you have any questions, consult your dealer. Read and understand this manual before operation.

NOTE: A safe operator is the best assurance against accidents. All operators, no matter how experienced they may be, should read this operator manual and all other related manuals before attempting to operate features in this cab/ROPS and operate the base tractor. Please read the following section and pay particular attention to all safety recommendations contained in this manual and those labelled on the cab and on the tractor.

General Safety

1. Never let an unqualified or untrained driver operate the tractor.
2. Keep a fire extinguisher, with ABC rating securely fastened in the ROPS. Maintain it and be familiar with its use.
3. Do not carry passengers.
4. Never operate the tractor in a closed building for a prolonged period. Ensure adequate ventilation is present, as engine exhaust fumes are poisonous and can kill.
5. Always keep sleeves, jackets or other loose clothing relatively tight and belted. Loose clothing may catch on moving parts and result in severe personal injury or death.
6. Provide a first-aid kit, securely attached inside of the ROPS for use in case of accident.
7. Never jump from the tractor. There is a danger of tripping or falling on protruding parts.
8. Use steps and hand holds when mounting and dismounting the tractor, or for servicing components too high to reach from the ground.
9. When seated in the ROPS, fasten seat belt before starting the engine. A proper seat belt must be worn at all times when using a ROPS.
10. Safety devices and shields are intended to protect operators from injury or death. Under no circumstances should they be modified, disabled or removed.

Operating Safety

1. Always operate the tractor controls while sitting in the operator's seat.
2. Lock seat in position and buckle seat belt before operating the tractor.
3. Avoid abrupt sharp turns at high speeds.
4. On sloped terrain, do not make sharp turns as machine stability could be compromised.
5. Operate the tractor smoothly, avoid abrupt starts and stops.
6. Keep all shields in place when operating the tractor.
7. Do not operate the tractor when you are tired, sick, or impaired.
8. Never operate the tractor in confined areas; visibility next to the tractor is reduced. Injury to bystanders or damage to the ROPS or equipment may result.

Safety

Carefully review the procedures given in this manual and the tractor operator's manual with all operators annually. It is important that all operators become familiar with, and follow safety precautions. Operating instructions must be given to everyone using the tractor before operation and at least once yearly thereafter in compliance with OSHA Regulations 1928.57 (United States).

Safe Operation on Rough Terrain

1. Drive the tractor slowly on hillsides and curves to eliminate the danger of tipping. Avoid slopes which are too steep for safe operation. Avoid sharp uphill turns.
2. Always drive slowly enough over rough ground or obstructions. Drive at speeds slow enough to ensure your safety.
3. When driving out of a ditch, gully, or up a steep hillside, engage the clutch slowly. Avoid sharp uphill turns.
4. When descending steep grades, select a sufficiently low gear to maintain control with minimum use of braking.
5. Use caution when driving near the edge of a ditch or gully. It may cave in, causing the tractor to roll over.
6. Be alert when operating near trees, slopes and around obstructions. Tree branches can cause damage to ROPS components.

Maintenance Safety

1. Remove mud, crop residue, chains, and tools from steps and operator's platform. They may interfere with pedal operation or entry/exit from tractor.
2. When servicing components are too high to reach from the ground use steps and handholds. Do not use fenders or shields that are not designed as steps.

Safe Highway Operation

1. Before operating the tractor on, or near, public roadways check with your local authorities for any local regulations that will affect you.
2. Equip towed implements with slow moving vehicle (SMV) signs when traveling on public roads.
3. Install additional lights on implement rear to safeguard against rear end collisions.
4. Use hazard warning flashers as required by law when transporting or driving on public roads. If the tractor had warning flashers removed when mounting the ROPS, they must be replaced prior to operation on public roads.
5. Keep to the right, yielding right-of-way traffic, especially if pulling implements. Pull off the road and stop to allow motorists to pass. Drive on the road shoulder, if permitted by law.
6. Use extreme caution when pulling heavy loads at road speeds. Avoid hard application of the tractor brakes at high speed.
7. Always drive slowly near curbs, approaches or ditches.
8. If equipped, ensure headlights are aligned so they will not blind the operator's of oncoming vehicles. If the tractor is not equipped with turn signals and law requires them, install them prior to operating on or near public roads.
9. Use your turn signals, checking for traffic well in advance of turning. If the tractor is not equipped with turn signals and law requires them, install them prior to operating on or near public roads.

Safety Decals

1. Keep decals clean. Remove dirt with a wet clean cloth when necessary.
2. Replace safety decals if destroyed, missing, painted over or unreadable. If any safety decals are covered or obscured when the ROPS is mounted, it is recommended that you purchase replacement decals from the tractor manufacturer. Mount them in a readable location at, or near, their original location before operating the tractor.
3. New ROPS decals and tractor decals are available from your tractor dealer.

ROPS Safety

1. Install the ROPS in accordance with Tektite mounting instructions. Failure to do so may affect the ROPS ability to withstand a roll over.
2. If the ROPS is subjected to alteration, structural damage or involved in an over turn accident, the entire structure must be replaced. Failure to do so may result in injury or death in the event of a roll over.
3. If the tractor is not equipped with seat belts, purchase approved seat belts from the tractor manufacturer or Tektite prior to operating the tractor.
4. Always fasten seat belts prior to operating the tractor.
5. Always operate the tractor from the operator's seat.
6. Remove mud, crop residue, chains and tools from steps and operator's platform. They may interfere with pedal operation or entry/exit from the tractor.
7. Remove all loose chains, tools, and equipment from the operator's platform. Failure to do so may cause injury or death in the event of a roll over.
8. Do not install the ROPS on a tractor model that the ROPS is not designated for (compatible tractor designations are printed on the ROPS serial number plate). The ROPS is designed specifically for individual models to ensure ROPS requirements will be met. Installing the ROPS on a non designated tractor may result in injury or death.

Emergency Exits

The deluxe ROPS cab has two doors. Either one can be used during an emergency.

Operating Instructions

Important

The following section locates, identifies and briefly describes the functions of all cab controls. All operators should familiarize themselves with control location and function prior to operating the tractor. Failure to do so may result in unsafe operation of the tractor and possible injury or death to operators and bystanders.

There is one switch plate located in the cab. The following switches are available and their functionality is described.



Cab Switch Plate

1. Front Wiper Rocker Switch (standard)

Low position: Off

High position: On

Note: indicator light activates when wiper is on.

2. Rear Wiper Rocker Switch (not available on all models)

Low position: Off

High position: On

Note: indicator light activates when wiper is on.

3. Front Work Light Rocker Switch (standard)

Low position: Off

High position: On

Note: indicator light activates when work lights are on.

4. Rear Work Light Rocker Switch (optional)

Low position: Off

High position: On

Note: indicator light activates when work light is on.

5. Wiper Washer Rocker Switch (optional)

Low position: Off

High position: On

Note: indicator light activates when the front washer is on.

6. Beacon Rocker Switch (optional)

Low position: Off

High position: On

Note: indicator light activates when work lights are on.

7. Water Heater Fan Rocker Switch (standard)

Low position: Off

High position: On

Note: indicator light activates when the heater is on.

Standard and optional features are individually fused, and the fuses can be accessed behind the plug in the middle of the switch-plate.

Cab Circuit Protection

The Tektite ROPS cab is wired to provide maximum protection against individual circuit overload. All optional components are fused internally behind the cab switch plate. Cab wiring is direct to the tractor battery. DO NOT leave options activated when tractor is not running as battery run down can occur.

Please note: Tektite does have a key switch power option to provide maximum protection against accidental battery rundown and circuit overload. A relay is ignition activated and prevents the operator from accidentally leaving fan motors, lights on after turning the tractor off and leaving for the day. A circuit breaker is provided to prevent the cab electrical components from drawing more power than they should be able to from a dead short. This option can come with your cab if selected or field installed at a later date.

BX23S Cab

The BX23S cab is design to provide ROPS protection along with reasonable winter weather protection. The deluxe cab design for this model features glass windows at all window locations. The BX tractor draws its air intake from underneath the steering wheel, so the tractor cab cannot be completely sealed, otherwise it will starve the engine for air.

**** If winter front for machine air intake is ordered with cab, use during WINTER months with cold weather ONLY! Tractor engine will not have enough fresh air intake otherwise. Winter**

front MUST be off tractor during warm weather! Tektite is not responsible if winter front is left on tractor and engine over-heating occurs in the summer months.

If you are going to be running the tractor with the cab on during the summer months, there is the option to un-hook the gas shocks on each door, and lift the doors off of the pin hinges.

After your ROPS Cab has been installed:

Before starting a tractor equipped with a Tektite ROPS cab:

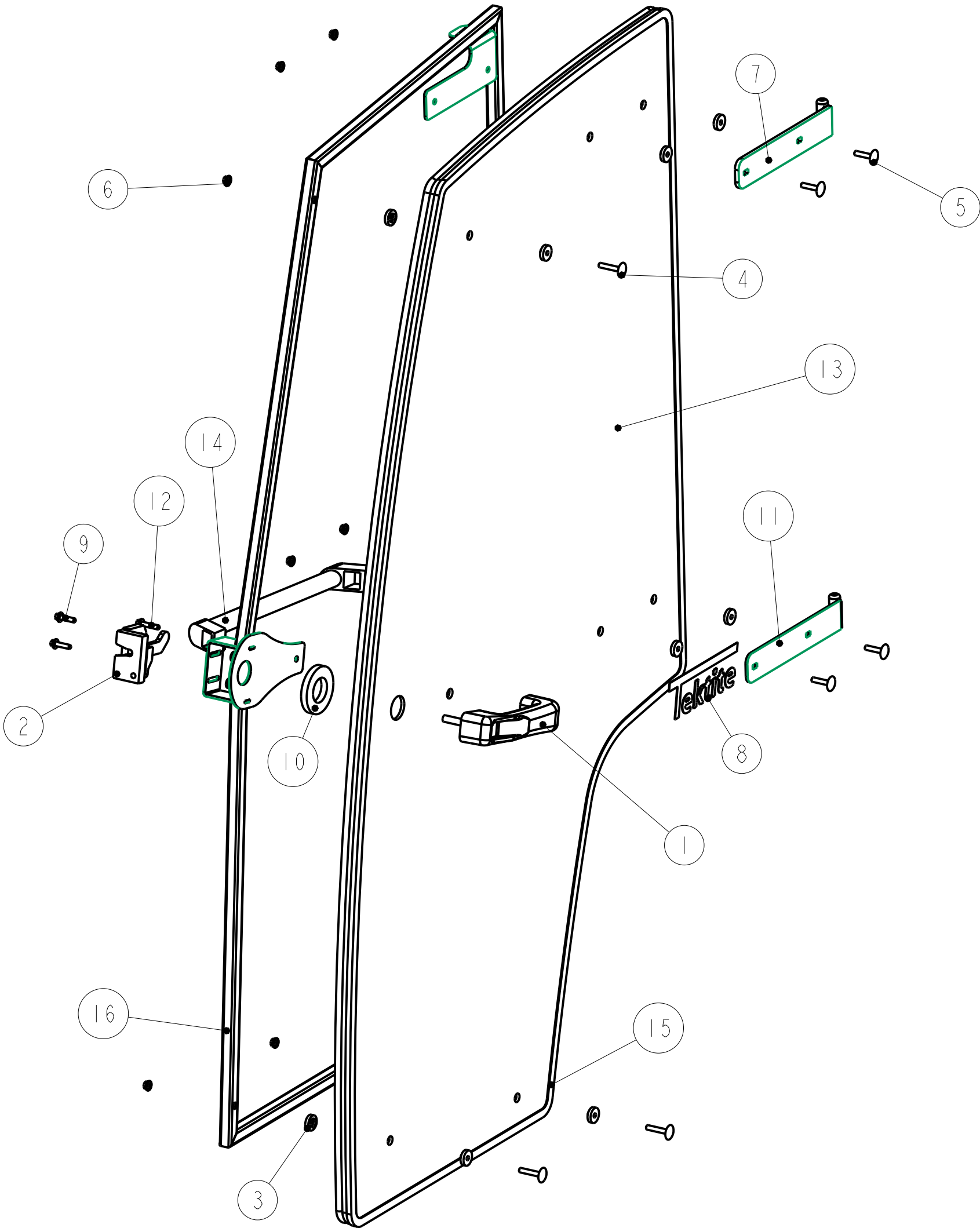
1. Clear the operator platform of all tools. Tools left in or around the ROPS and tractor can cause operator interference which could lead to bodily injury and/or damage the machine.
2. Inspect the ROPS and tractor to ensure all bolts are tight and re-tighten if required.
3. Ensure that all pedals, levers, and controls have adequate clearance for normal operation.
4. Ensure that all electrical components of both the ROPS and tractor operate normally.
5. Ensure your door latches properly onto the striker pin. Immediately after installation, the ROPS frame may flex slightly from installation, and the door latch will need to be re-aligned for proper operation. Loosen the striker pin, striker mounting plate and door latch as necessary to get a proper alignment of the door striker.

Service Parts Breakdowns:

Following are parts breakdowns for components that may require service parts replacement during the life of the ROPS. If you require replacement parts, please contact the dealer that you purchased the ROPS from and indicate which parts you require.

Please note that both the deluxe breakdowns are included with this manual.

Index	Service Part #	File Name	Description	Qty
1	A00-0001	DLP-HANDLE	Outside Push Button Handle	1
2	A00-0002	LEFT-LATCH	Suicide Door Left Latch	1
3	A00-0013	TEKT-0009	5MM Bushing	15
4	A00-0018	STEP-BOLT1-4X1-1-2	Step Bolt, 1/4" x 1 1/2", MB	3
5	A00-0020	STEP-BOLT1-4X1-1-4	Step Bolt, 1/4" x 1 1/4", MB	4
6	A00-0021	FLANGE-NUT-1-4	Flange Nut, 1/4", YD	9
7	A00-0039	TEKT-ASM-001	Left Door Hinge Weldment, Upper	1
8	A00-0041	TEKTITE-DECAL	Tektite Cab Decal - Solid White	1
9	A00-0118	FLANGE_BOLT_1-4X1	Flange Bolt, 1/4" x 1", YD	2
10	A00-0177	TEKT-0068	Handle Washer Spacer	1
11	A00-0228	TEKT-ASM-029	Left Door Hinge Weldment, Lower	1
12	A00-0295	FLANGE_BOLT_M6X30	Flange Bolt, M6x30, YD	1
13	K10-0020	KUBX23S-156	Door Glass, 2024	1
14	K10-0025	KUBX23S-174	Door Handle, 2024	1
15	K10-0026	KUBX23S-175	Door Seal, 2024	1
16	K10-0027	KUBX23S-ASM-58	Door Frame Weldment, LEFT, 2024	1



Tektite Manufacturing Inc.

427 Buffalo Str, Box 639, Winkler MB, R6W 4A8, Canada

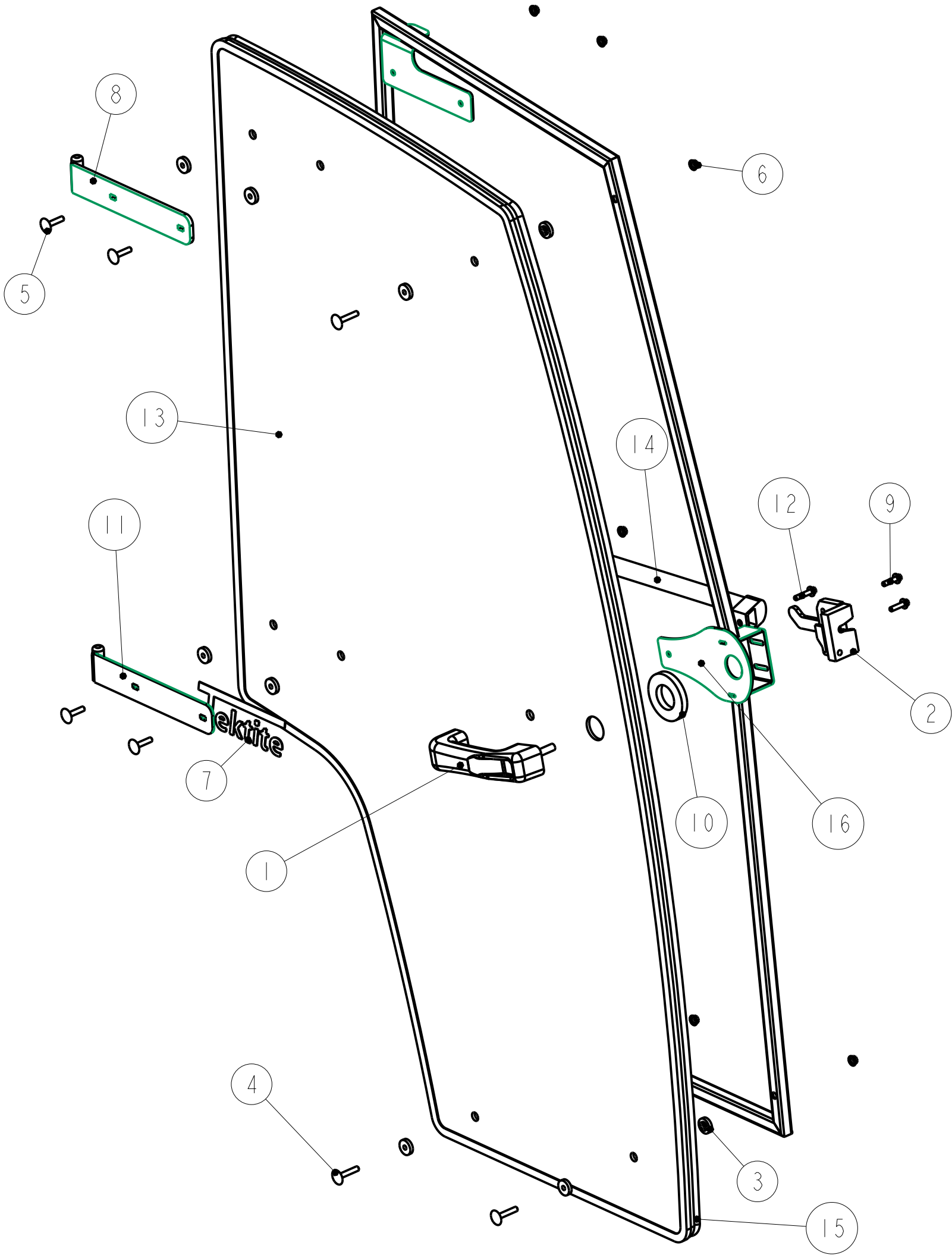
Notice of Confidentiality

This material is property of Tektite Manufacturing Inc and is not to be used by the recipient for any purpose other than the purpose for which it was transmitted. The material remains the property of Tektite and shall be returned upon request. The material may not be reproduced or disclosed to third parties without the written consent of Tektite.

Tolerances:
Unless otherwise specified
X.X = ±1/16"
Angular = ± 1.0°

Req'd: 1 req				CNC:		Description: LEFT Door Assembly, 2024	
Drawn By: Daryl Furkalo		Date: 2023-11-30		Units: Imp.		File Name: KUBX23S-ASM-57_OP	
Checked By:		Date:		Size: B			

Index	Service Part #	File Name	Description	Qty
1	A00-0001	DLP-HANDLE	Outside Push Button Handle	1
2	A00-0003	RIGHT-LATCH	Suicide Door Right Latch	1
3	A00-0013	TEKT-0009	5MM Bushing	15
4	A00-0018	STEP-BOLT1-4X1-1-2	Step Bolt, 1/4" x 1 1/2", MB	3
5	A00-0020	STEP-BOLT1-4X1-1-4	Step Bolt, 1/4" x 1 1/4", MB	4
6	A00-0021	FLANGE-NUT-1-4	Flange Nut, 1/4", YD	9
7	A00-0041	TEKTITE-DECAL	Tektite Cab Decal - Solid White	1
8	A00-0042	TEKT-ASM-001R	Right Cab Door Hinge Weldment, Upper	1
9	A00-0118	FLANGE_BOLT_1-4X1	Flange Bolt, 1/4" x 1", YD	2
10	A00-0177	TEKT-0068	Handle Washer Spacer	1
11	A00-0229	TEKT-ASM-029R	Right Door Hinge Weldment, Lower	1
12	A00-0295	FLANGE_BOLT_M6X30	Flange Bolt, M6x30, YD	1
13	K10-0020	KUBX23S-156	Door Glass, 2024	1
14	K10-0025	KUBX23S-174	Door Handle, 2024	1
15	K10-0026	KUBX23S-175R	Door Seal, 2024	1
16	K10-0028	KUBX23S-ASM-58R	Door Frame Weldment, RIGHT, 2024	1



Tektite Manufacturing Inc.

427 Buffalo Str, Box 639, Winkler MB, R6W 4A8, Canada

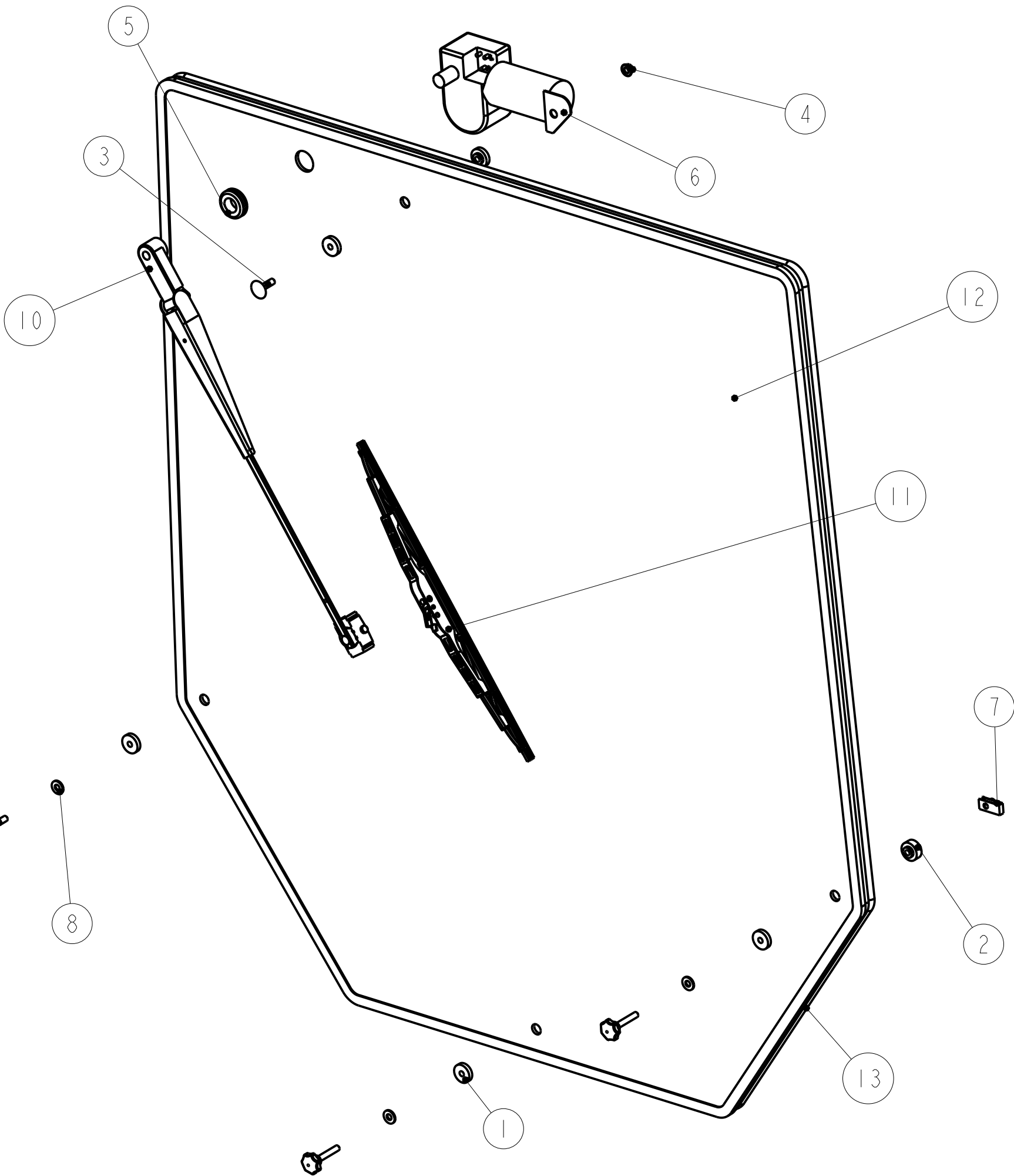
Notice of Confidentiality

This material is property of Tektite Manufacturing Inc and is not to be used by the recipient for any purpose other than the purpose for which it was transmitted. The material remains the property of Tektite and shall be returned upon request. The material may not be reproduced or disclosed to third parties without the written consent of Tektite.

Tolerances:
Unless otherwise specified
X.X = ±1/16"
Angular = ± 1.0°

Req'd: 1 req				CNC:				Description: Right Door Assembly, 2024			
Drawn By: Daryl Furkalo				Date: 2023-12-01				Units: Imp.		File Name: KUBX23S-ASM-57R_OP	
Checked By:				Date:				Size: B			

Index	Service Part #	File Name	Description	Qty
1	A00-0013	TEKT-0009	5MM Bushing	5
2	A00-0014	TEKT-0092	Thick Bushing	3
3	A00-0019	STEP-BOLT1-4X1	Step Bolt, 1/4" x 1", MB	1
4	A00-0021	FLANGE-NUT-1-4	Flange Nut, 1/4", YD	1
5	A00-0033	315-080	Rear Wiper Shaft Grommet	1
6	A00-0043	WWF-MOTOR	WWF Wiper Motor, 1" Shaft	1
7	A00-0076	TEKT-0026	1/4" Panel Nut	3
8	A00-0119	WASHER_1-4	Washer, Flat, 1/4" x 5/8"OD	3
9	A00-0385	TEKT-0190	Knob, Knurled, 1/4" x 1 7/16"	3
10	A00-0429	TEKT-ASM-074	WWF, Adjustable Radial Arm, J-Hook, Long	1
11	A00-0430	TEKT-ASM-073	Wiper Blade, 16", J-Hook	1
12	K10-0022	KUBX23S-170	Rear Window Glass, 2024	1
13	K10-0024	KUBX23S_173	Rear Window Seal, 2024	1



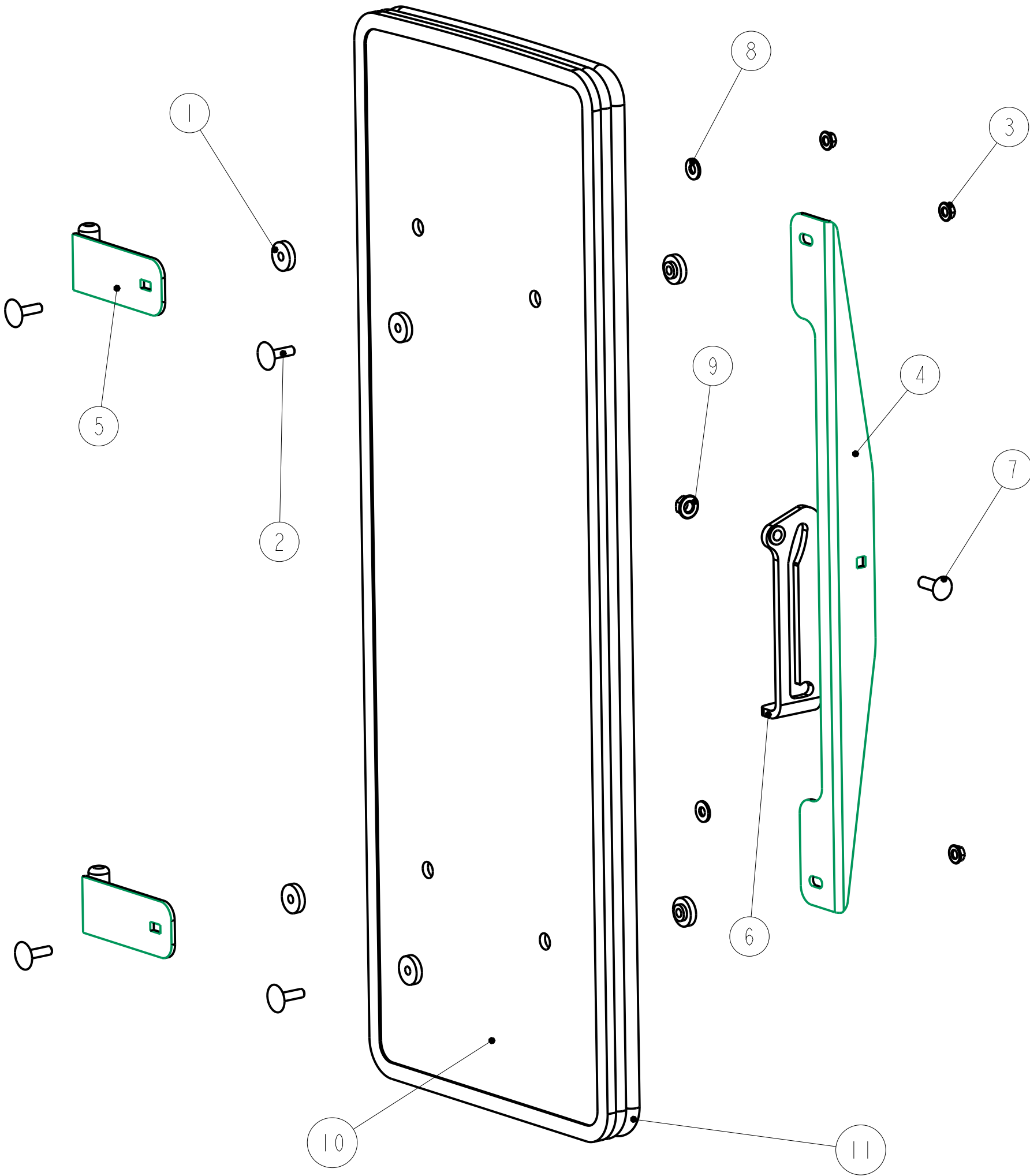
Notice of Confidentiality

This material is property of Tektite Manufacturing Inc and is not to be used by the recipient for any purpose other than the purpose for which it was transmitted. The material remains the property of Tektite and shall be returned upon request. The material may not be reproduced or disclosed to third parties without the written consent of Tektite.

Tolerances:
Unless otherwise specified
X.X = ±1/16"
Angular = ± 1.0°

Tektite Manufacturing Inc. 427 Buffalo Str, Box 639, Winkler MB, R6W 4A8, Canada				
Req'd:	CNC:	Description:		
1 req		Rear Window Assembly, 2024		
Drawn By:	Date:	Units:	File Name:	
Daryl Furkalo	2023-11-29	Imp.	KUBX23S-ASM-61_OP	
Checked By:	Date:	Size:		
		B		

Index	Service Part #	File Name	Description	Qty
1	A00-0013	TEKT-0009	5MM Bushing	8
2	A00-0019	STEP-BOLT1-4X1	Step Bolt, 1/4" x 1", MB	4
3	A00-0021	FLANGE-NUT-1-4	Flange Nut, 1/4", YD	4
4	A00-0045	TEKT-0004	Side Window Slider Bracket, 1" tube	1
5	A00-0046	TEKT-ASM-002R	Side Window Hinge Right	2
6	A00-0056	TEKT-0020	Side Window Latch, L60775	1
7	A00-0058	CARRIAGE_BOLT-5-16X1	Bolt, Carriage, 5/16"x 1", YD	1
8	A00-0119	WASHER_1-4	Washer, Flat, 1/4" x 5/8"OD	2
9	A00-0413	FLANGE-NUT-5-16	Flange Nut, 5/16", YD	1
10	K10-0021	KUBX23S-164	Side Window Glass, 2024	1
11	K10-0023	KUBX23S-172R	Side Window Seal, 2024	1



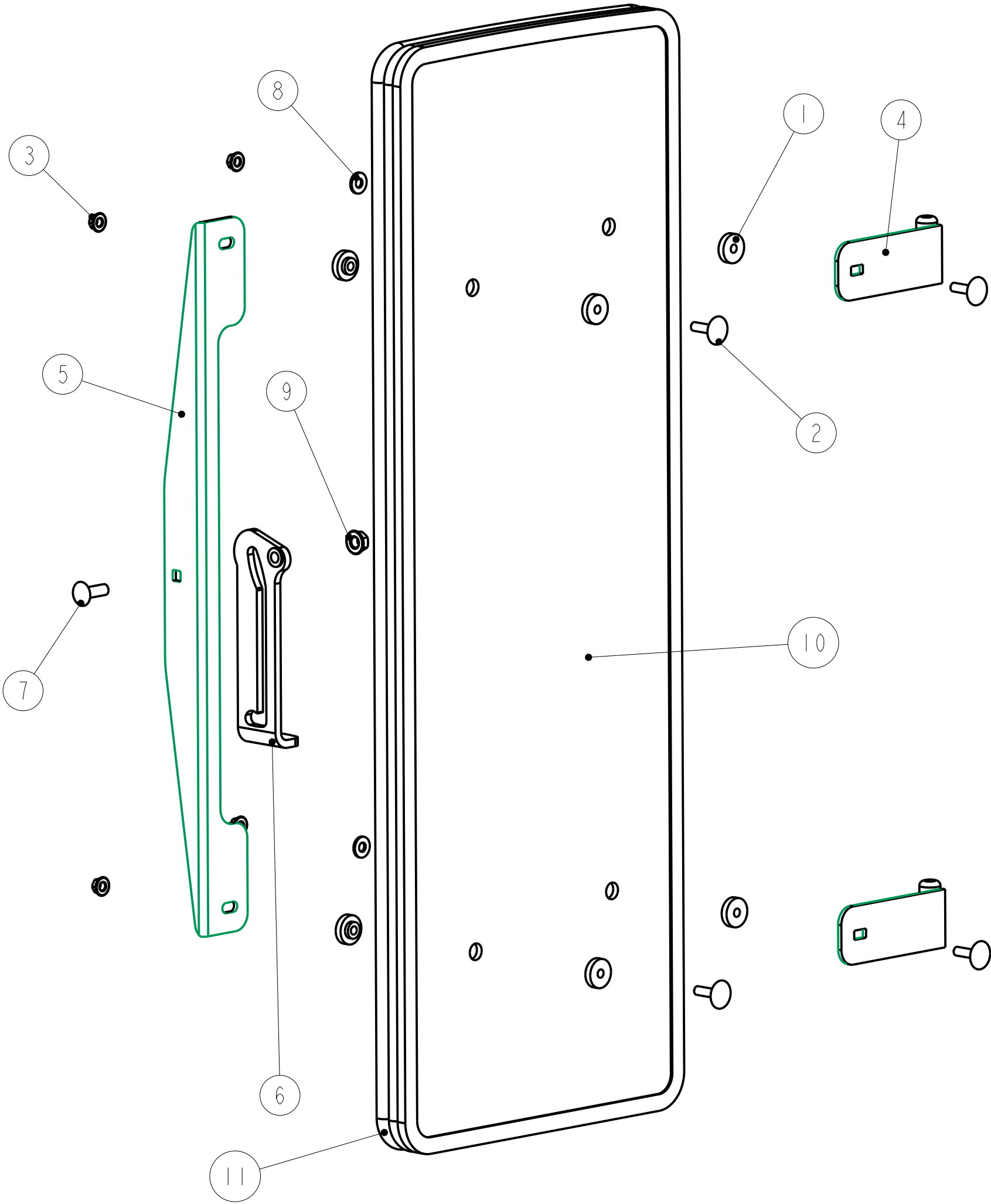
Notice of Confidentiality

This material is property of Tektite Manufacturing Inc and is not to be used by the recipient for any purpose other than the purpose for which it was transmitted. The material remains the property of Tektite and shall be returned upon request. The material may not be reproduced or disclosed to third parties without the written consent of Tektite.

Tolerances:
Unless otherwise specified
X.X = ±1/16"
Angular = ± 1.0°

Tektite Manufacturing Inc. 427 Buffalo Str, Box 639, Winkler MB, R6W 4A8, Canada				
Req'd:	CNC:	Description:		
1 req		Right Side Window Assembly, 2024		
Drawn By:	Date:	Units:	File Name:	
Daryl Furkalo	2023-11-29	Imp.	KUBX23S-ASM-59R_OP	
Checked By:	Date:	Size:		
		B		

Index	Service Part #	File Name	Description	Qty
1	A00-0013	TEKT-0009	5MM Bushing	8
2	A00-0019	STEP-BOLT1-4X1	Step Bolt, 1/4" x 1", MB	4
3	A00-0021	FLANGE-NUT-1-4	Flange Nut, 1/4", YD	4
4	A00-0044	TEKT-ASM-002	Side Window Hinge Weldment	2
5	A00-0045	TEKT-0004	Side Window Slider Bracket, 1" tube	1
6	A00-0057	TEKT-0020MIR	Side Window Latch, L60776	1
7	A00-0058	CARRIAGE_BOLT-5-16X1	Bolt, Carriage, 5/16"x 1", YD	1
8	A00-0119	WASHER_1-4	Washer, Flat, 1/4" x 5/8"OD	2
9	A00-0413	FLANGE-NUT-5-16	Flange Nut, 5/16", YD	1
10	K10-0021	KUBX23S-164	Side Window Glass, 2024	1
11	K10-0023	KUBX23S-172	Side Window Seal, 2024	1



Tektite Manufacturing Inc.

427 Buffalo Str, Box 639, Winkler MB, R6W 4A8, Canada

Notice of Confidentiality

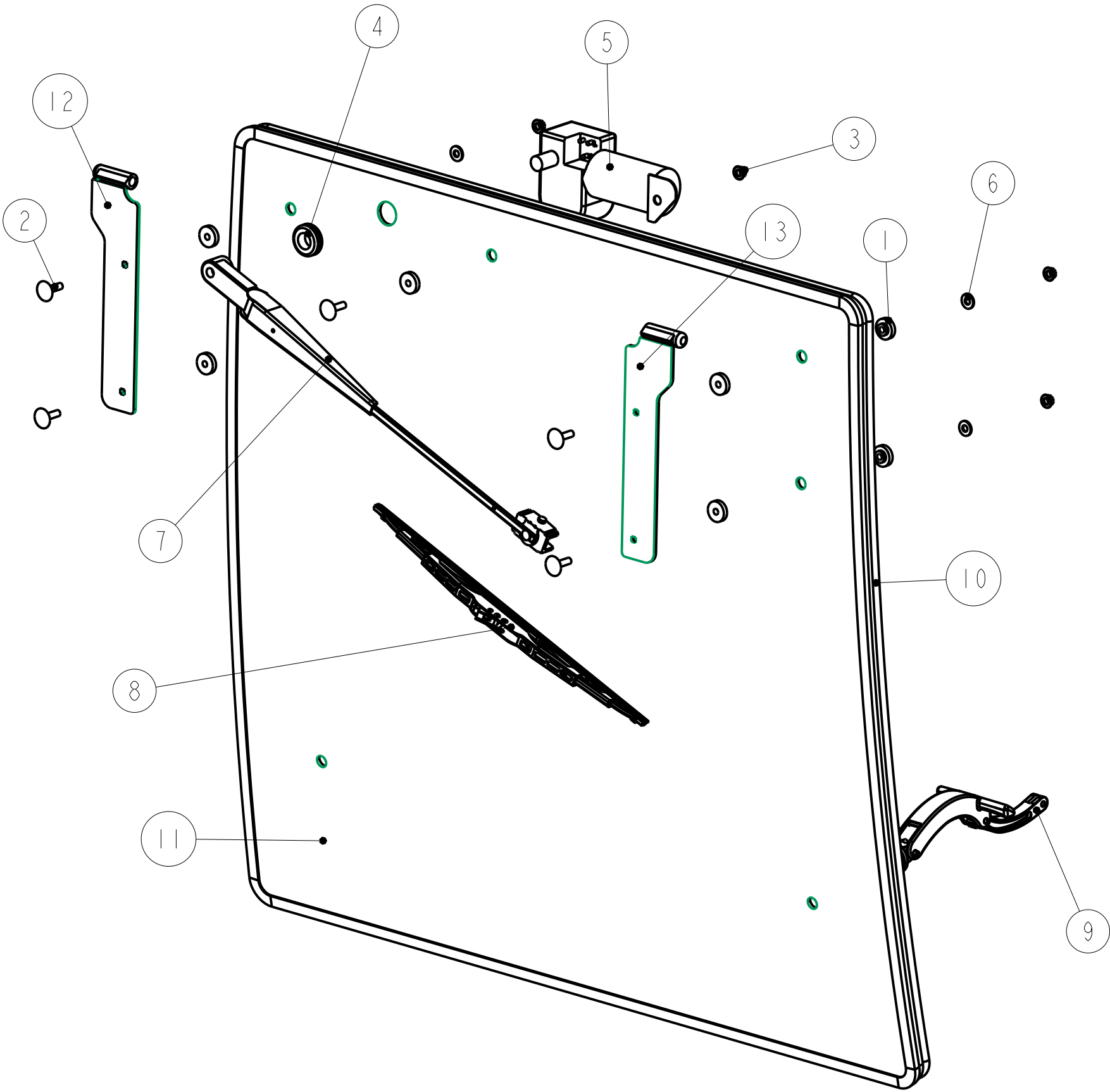
This material is property of Tektite Manufacturing Inc and is not to be used by the recipient for any purpose other than the purpose for which it was transmitted. The material remains the property of Tektite and shall be returned upon request. The material may not be reproduced or disclosed to third parties without the written consent of Tektite.

Tolerances:
Unless otherwise specified

X.X = ±1/16"
Angular = ± 1.0°

Req'd: 1 req					CNC:					Description: Left Side Window Assembly, 2024				
Drawn By: Daryl Furkalo					Date: 2023-11-29					Units: Imp.				
Checked By:					Date:					File Name: KUBX23S-ASM-59_OP				
										Size: B				

Index	Service Part #	File Name	Description	Qty
1	A00-0013	TEKT-0009	5MM Bushing	10
2	A00-0019	STEP-BOLT1-4X1	Step Bolt, 1/4" x 1", MB	5
3	A00-0021	FLANGE-NUT-1-4	Flange Nut, 1/4", YD	5
4	A00-0033	315-080	Rear Wiper Shaft Grommet	1
5	A00-0043	WWF-MOTOR	WWF Wiper Motor, 1" Shaft	1
6	A00-0119	WASHER_1-4	Washer, Flat, 1/4" x 5/8"OD	4
7	A00-0429	TEKT-ASM-074	WWF, Adjustable Radial Arm, J-Hook, Long	1
8	A00-0430	TEKT-ASM-073	Wiper Blade, 16", J-Hook	1
9	A00-0564	1049	Opening Window Handle	2
10	K10-0029	KUBX23S--176	Front Upper Window Seal, 2024	1
11	K10-0030	KUBX23S-165	Opening Windshield, 2024	1
12	K10-0031	KUBX23S-ASM-63	Front RH Windshield Hinge Weldment, MY2024	1
13	K10-0032	KUBX23S-ASM-63L	Front LH Windshield Hinge Weldment, MY2024	1



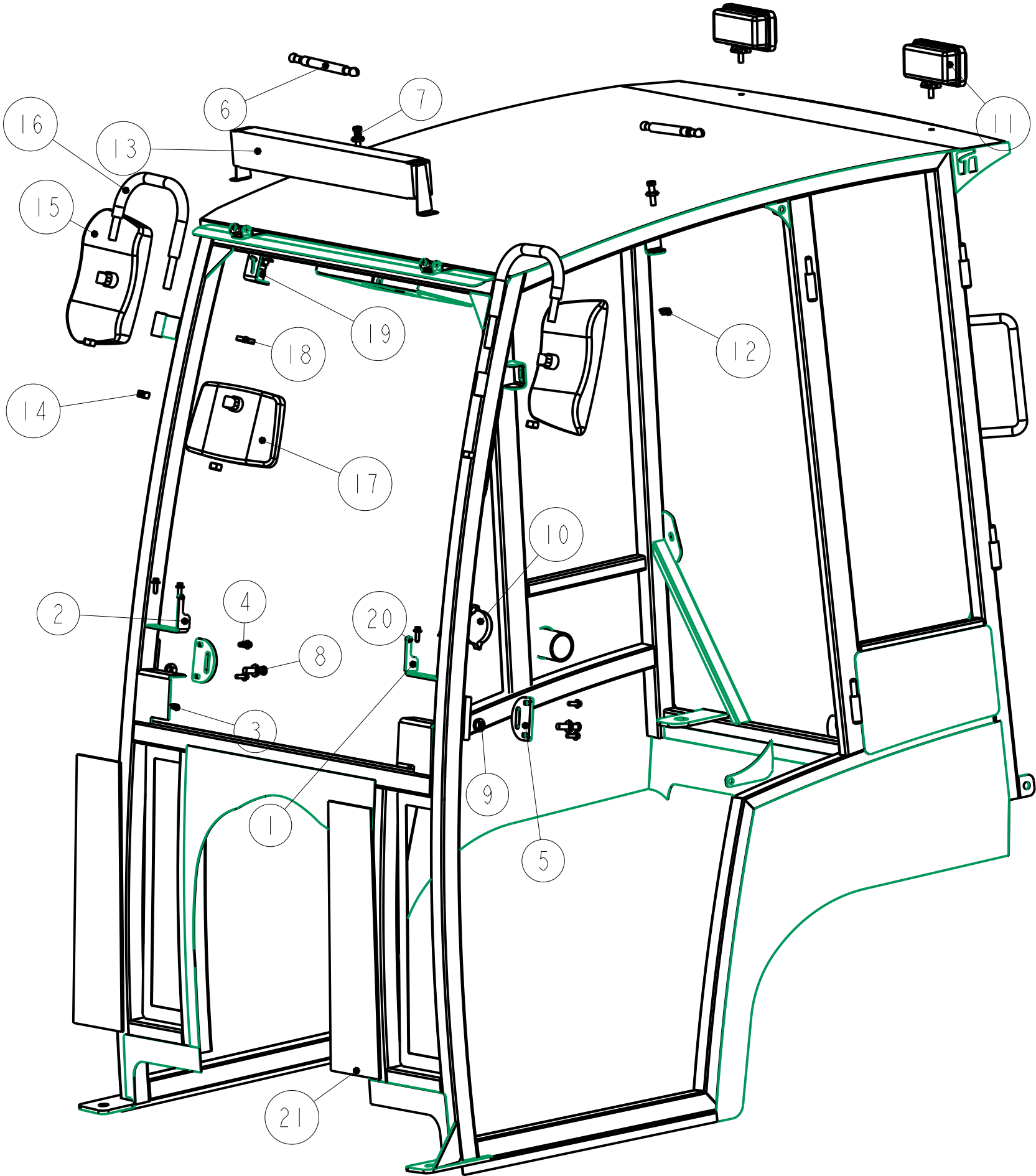
Notice of Confidentiality

This material is property of Tektite Manufacturing Inc and is not to be used by the recipient for any purpose other than the purpose for which it was transmitted. The material remains the property of Tektite and shall be returned upon request. The material may not be reproduced or disclosed to third parties without the written consent of Tektite.

Tolerances:
Unless otherwise specified
X.X = ±1/16"
Angular = ± 1.0°

Tektite Manufacturing Inc. 427 Buffalo Str, Box 639, Winkler MB, R6W 4A8, Canada				
Req'd:	CNC:	Description:		
1 req		Windshield Assembly		
Drawn By:	Date:	Units:	File Name:	
Daryl Furkalo	2024-03-04	Imp.	KUBX23S-ASM-60_OP	
Checked By:	Date:	Size:		
		B		

Index	Service Part #	File Name	Description	Qty
1		KUBX23S-169	Windshield Pivot Plate	1
2		KUBX23S-169R	Windshield Pivot Plate	1
3	A00-0021	FLANGE-NUT-1-4	Flange Nut, 1/4", YD	4
4	A00-0023	FLANGE_BOLT_1-4X3-4	Flange Bolt, 1/4" x 3/4", YD	8
5	A00-0061	STRIKER-PLATE	Striker Mounting Plate	2
6	A00-0084	TEKT-0070	Gas Shock	2
7	A00-0085	TEKT-0069	Gas Shock Stud	2
8	A00-0101	STRIKER-PIN	Striker Pin	2
9	A00-0103	HEX-NUT-M12X1	Hex Nut, M12 x 1.0, YD	2
10	A00-0131	TEKT-0181	External Fuel Cap	1
11	A00-0371	TEKT-0175	New LED Work Light (Blazer Intl)	2
12	A00-0413	FLANGE-NUT-5-16	Flange Nut, 5/16", YD	2
13	A00-0501	TEKT-0227	Upgrade Light Bar, Front/Rear	1
14	A00-0504	HEX-NUT-M12	Hex Nut, M12, Gr. 10.9, YD	5
15	A00-0519	TEKT-0244	Rectangular Mirror	2
16	A00-0520	TEKT-0243	Mirror Bracket Bar	2
17	A00-0535	TEKT-0249	Rectangular Interior Mirror	1
18	A00-0536	TEKT-0250	Spacer For Interior Mirror	1
19	A00-0537	CARRIAGE_BOLT_M12X40	Carriage Bolt, M12 x 40	1
20	A00-0565	SPRING-PIN_7-32	Spring Pin, 7/32" x 1/2"	2
21	K09-0002	KUBX2380-045	Lower Front Window	2
22	n/a	KUBX23S-ASM-55	BX23s Cab, MY2024	1



Tektite Manufacturing Inc.

427 Buffalo Str, Box 639, Winkler MB, R6W 4A8, Canada

Notice of Confidentiality

This material is property of Tektite Manufacturing Inc and is not to be used by the recipient for any purpose other than the purpose for which it was transmitted. The material remains the property of Tektite and shall be returned upon request. The material may not be reproduced or disclosed to third parties without the written consent of Tektite.

Tolerances:
Unless otherwise specified
X.X = ±1/16"
Angular = ± 1.0°

Req'd:	CNC:	Description:		
1 req		Cab Accessories Breakdown		
Drawn By:	Date:	Units:	File Name:	
Daryl Furkalo	2024-03-05	Imp.	KUBX23S-ASM-65	
Checked By:	Date:	Size:		
		B		