



Kubota Fx80 Series Cab

** Shown with optional equipment



Kubota Fx80 Series Cab

This ROPS cab is designed and built to fit the Kubota F2880, F3080, and F3680.

Designed and Built by:

Tektite Manufacturing Inc:

427 Buffalo Street

P.O. Box 639

Winkler, MB

R6W 4A8

Canada

PH: 204-331-3463

Fax: 204-331-4159

sales@tektite.ca

www.tektite.ca

One year standard product warranty provided by Tektite.



Tektite Manufacturing Incorporated thanks you for purchasing a Kubota Fx80 series ROPS cab! Tektite has worked very hard to design and build this ROPS product and we hope that it provides you with many years of ROPS protection.

Tektite's ROPS products are designed to provide safe and dependable service during operation when they are properly maintained according to the instructions. Please read this operator manual carefully before using this ROPS product.

The photos/illustrations provided in this manual may not provide all the detail needed, and are for reference only.

All directions provided are from the reference point of the tractor seat facing the steering wheel. All left and right references are from this view point.

For reference, please fill in the information below. This will assist your dealer in providing service for this ROPS. It is advisable that this information be provided to your insurance company as well in the event that the tractor is lost or damaged.

Vehicle Model: _____

ROPS Serial Number: _____

Date of Purchase: _____

Dealer Name: _____



Tektite Limited Warranty

Tektite Manufacturing Inc. ("Tektite") warrants to the original purchaser (the "Claimant"), that Tektite products will be free from defective materials or workmanship, under normal use and service, for a period of (1) full year from the original invoice date. Tektite's liability under this Limited Warranty is limited to the repair or (at the discretion of Tektite) the replacement of those components of its products, which were manufactured by Tektite that are defective in materials or workmanship. Tektite shall have no liability under this Limited Warranty unless Tektite is notified of the defect during the stated Warranty Period.

Limitations and Exclusions: Tektite has no responsibility to a Claimant under this Limited Warranty or on any other basis for any of the following:

- a) defects caused, in whole or in part, by accident or misuse, negligence or failure to maintain the product or component;
- b) products or components sold to a customer on an "as is" basis;
- c) wiper blades, light bulbs, fuses, clear vinyl or other consumables;
- d) glass where the point of failure has not been preserved intact and delivered to Tektite for analysis of the cause of the failure;
- e) products or components which have been modified after shipping from Tektite to its customer;
- f) transportation charges for returned, repaired or replacement items;
- g) defects that are subject of a Tektite initiated recall where the Claimant fails to comply with the terms of the recall notice that comes to the attention of the Claimant;
- h) components of Tektite products that are manufactured by third parties (Tektite's only obligation in relation to such components shall be to accord to the Claimant the benefit of any transferable warranty accorded to Tektite by third party manufacturer);
- i) defects in workmanship or materials in products or components that are repaired or replaced by Tektite unless Tektite is notified of the new defect within the Warranty Period that applied to the original product or component that has been repaired or replaced;
- j) defects that result, in whole or in part, from inadequate engineering or specifications provided to Tektite by its customer;
- k) any actual or alleged deficiency in technical or engineering services or advice provided by Tektite to its customer whether provided for valuable consideration or otherwise;
- l) consequential damages, or any other damages whether foreseeable or not, resulting from the defect or any delay in remedying the defect;
- m) any breach or alleged breach of any implied warranty of merchantability or fitness for particular purpose of use;
- n) defects or part failure due to misuse or failure to follow recommended cab installation procedures; and
- o) travel expenses, including mileage.

This Limited Warranty expresses the entire obligation of Tektite, its officers, directors, agents and employees, to its customer or any Claimant in respect of any defect in workmanship, or materials of any product or component sold or manufactured by Tektite whether on grounds of breach of contract, negligence or other tortious liability, breach of express or implied warranty or other basis in law of any jurisdiction.

Acceptance by a customer of delivery of products of Tektite constitutes acceptance of this Limited Warranty in lieu of all other warranties express or implied including without limitation all implied warranties of merchantability or fitness for particular purpose or use and constitutes acceptance by customer of the exclusions and limitations of the liability of Tektite set out above. Once received, the cab should have ALL exterior cardboard, Styrofoam wrapping removed for immediate inspection of product to ensure that no damages have occurred during transportation. Outer coverings should stay off the cab and the cab be stored indoors in a controlled environment. The warranty card must be completed and returned to Tektite.

Warranty claims should be reported to parts@tektite.ca. A warranty claim form and instructions will be provided at this time. Warranty work not pre-authorized by Tektite may not be covered by this warranty agreement. Labor rate and time allowances are fixed by Tektite. Approved warranty claims will be issued in the form of credits applied to customer account.



Safety Precautions

Safety First

Read these instructions carefully. It is essential that you read the instructions and safety regulations before you attempt to assemble or use the features that are on this cab/ROPS.

Danger: Indicates an immediate hazardous situation which, if not avoided, will result in death or serious injury.

Warning: Indicates a potentially hazardous situation which, if not avoided, may result in death or serious injury.

Caution: Indicates a potentially hazardous situation which, if not avoided, may result in minor or moderate injury.

Important: Indicates that cab or property damage may result if instructions are not carefully followed.

NOTE: All products are designed to give safe, dependable service if they are operated and maintained according to instructions. It is the owner's responsibility to be certain anyone operating this product reads this manual, and all other applicable manuals, to become familiar with this cab and all safety precautions. Failure to do so could result in serious personal injury or cab damage. If you have any questions, consult your dealer. Read and understand this manual before operation.

NOTE: A safe operator is the best assurance against accidents. All operators, no matter how experienced they may be, should read this operator manual and all other related manuals before attempting to operate features in this cab/ROPS and operate the base tractor. Please read the following section and pay particular attention to all safety recommendations contained in this manual and those labelled on the cab and on the tractor.



General Safety

1. Never let an unqualified or untrained driver operate the mower.
2. Keep a fire extinguisher, with ABC rating securely fastened in the ROPS. Maintain it and be familiar with its use.
3. Do not carry passengers.
4. Never operate the mower in a closed building for a prolonged period. Ensure adequate ventilation is present, as engine exhaust fumes are poisonous and can kill.
5. Always keep sleeves, jackets or other loose clothing relatively tight and belted. Loose clothing may catch on moving parts and result in severe personal injury or death.
6. Provide a first-aid kit, securely attached inside of the ROPS for use in case of accident.
7. Never jump from the mower. There is a danger of tripping or falling on protruding parts.
8. Use steps and hand holds when mounting and dismounting the mower, or for servicing components too high to reach from the ground.
9. When seated in the ROPS, fasten seat belt before starting the engine. A proper seat belt must be worn at all times when using a ROPS.
10. Safety devices and shields are intended to protect operators from injury or death. Under no circumstances should they be modified, disabled or removed.

Operating Safety

1. Always operate the mower controls while sitting in the operator's seat.
2. Lock seat in position and buckle seat belt before operating the mower.
3. Avoid abrupt sharp turns at high speeds.
4. On sloped terrain, do not make sharp turns as machine stability could be compromised.
5. Operate the mower smoothly, avoid abrupt starts and stops.
6. Keep all shields in place when operating the mower.
7. Do not operate the mower when you are tired, sick, or impaired.
8. Never operate the mower in confined areas; visibility next to the tractor is reduced. Injury to bystanders or damage to the ROPS or equipment may result.

Safety

Carefully review the procedures given in this manual and the mower operator's manual with all operators annually. It is important that all operators become familiar with and follow safety precautions. Operating instructions must be given to everyone using the tractor before operation and at least once yearly thereafter in compliance with OSHA Regulations 1928.57 (United States).



Safe Operation on Rough Terrain

1. Drive the mower slowly on hillsides and curves to eliminate the danger of tipping. Avoid slopes which are too steep for safe operation. Avoid sharp uphill turns.
2. Always drive slowly enough over rough ground or obstructions. Drive at speeds slow enough to ensure your safety.
3. When driving out of a ditch, gully, or up a steep hillside, engage the clutch slowly. Avoid sharp uphill turns.
4. When descending steep grades, select a sufficiently low gear to maintain control with minimum use of braking.
5. Use caution when driving near the edge of a ditch or gully. It may cave in, causing the mower to roll over.
6. Be alert when operating near trees, slopes and around obstructions. Tree branches can cause damage to ROPS components.

Maintenance Safety

1. Remove mud, crop residue, chains, and tools from steps and operator's platform. They may interfere with pedal operation or entry/exit from mower.
2. When servicing components are too high to reach from the ground use steps and handholds. Do not use fenders or shields that are not designed as steps.

Safe Highway Operation

1. Before operating the mower on, or near, public roadways check with your local authorities for any local regulations that will affect you.
2. Equip towed implements with slow moving vehicle (SMV) signs when traveling on public roads.
3. Install additional lights on implement rear to safeguard against rear end collisions.
4. Use hazard warning flashers as required by law when transporting or driving on public roads. If the mower had warning flashers removed when mounting the ROPS, they must be replaced prior to operation on public roads.
5. Keep to the right, yielding right-of-way traffic, especially if pulling implements. Pull off the road and stop to allow motorists to pass. Drive on the road shoulder, if permitted by law.
6. Use extreme caution when pulling heavy loads at road speeds. Avoid hard application of the mower brakes at high speed.
7. Always drive slowly near curbs, approaches or ditches.
8. If equipped, ensure headlights are aligned so they will not blind the operators of oncoming vehicles. If the mower is not equipped with turn signals and law requires them, install them prior to operating on or near public roads.



9. Use your turn signals, checking for traffic well in advance of turning. If the mower is not equipped with turn signals and law requires them, install them prior to operating on or near public roads.

Safety Decals

1. Keep decals clean. Remove dirt with a wet clean cloth when necessary.
2. Replace safety decals if destroyed, missing, painted over or unreadable. If any safety decals are covered or obscured when the ROPS is mounted, it is recommended that you purchase replacement decals from the mower manufacturer. Mount them in a readable location at, or near, their original location before operating the mower.
3. New ROPS decals and mower decals are available from your mower dealer.

ROPS Safety

1. Install the ROPS in accordance with Tektite mounting instructions. Failure to do so may affect the ROPS ability to withstand a roll over.
2. If the ROPS is subjected to alteration, structural damage or involved in an over turn accident, the entire structure must be replaced. Failure to do so may result in injury or death in the event of a roll over.
3. If the mower is not equipped with seat belts, purchase approved seat belts from the mower manufacturer or Tektite prior to operating the mower.
4. Always fasten seat belts prior to operating the mower.
5. Always operate the mower from the operator's seat.
6. Remove mud, crop residue, chains and tools from steps and operator's platform. They may interfere with pedal operation or entry/exit from the mower.
7. Remove all loose chains, tools, and equipment from the operator's platform. Failure to do so may cause injury or death in the event of a roll over.
8. Do not install the ROPS on a mower model that the ROPS is not designated for (compatible mower designations are printed on the ROPS serial number plate). The ROPS is designed specifically for individual models to ensure ROPS requirements will be met. Installing the ROPS on a non designated mower may result in injury or death.

Emergency Exits

This ROPS cab has 2 exits, which may be used in an emergency: left and right doors.

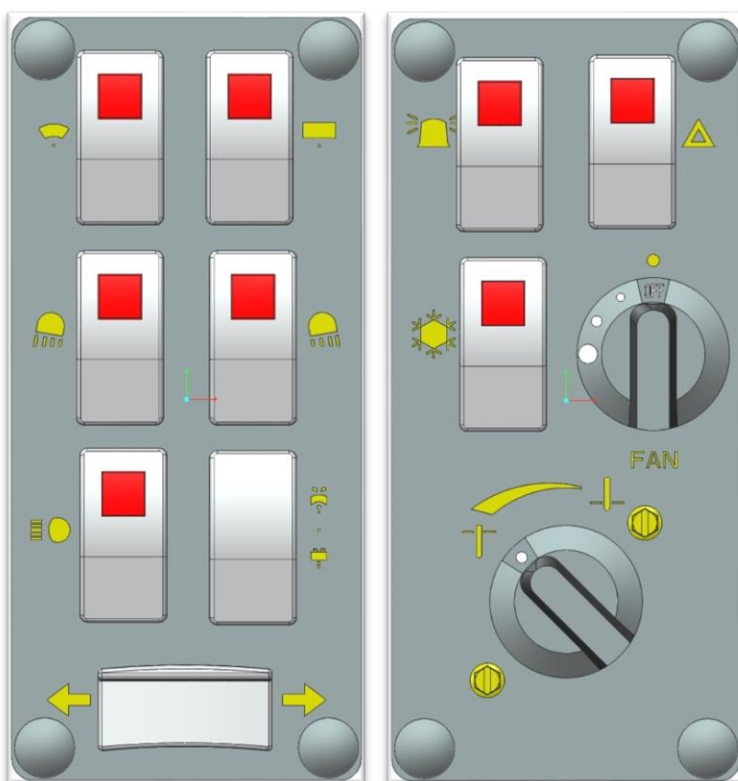


Operating Instructions

Important

The following section locates, identifies and briefly describes the functions of all cab controls. All operators should familiarize themselves with control location and function prior to operating the mower. Failure to do so may result in unsafe operation of the mower and possible injury or death to operators and bystanders.

There are two switch plates located in the headliner. The following switches are available and their functionality is described.



Left Switch Plate

1. Front Wiper Rocker Switch (standard)

Low position: Off

High position: On

Note: indicator light activates when wiper is on.

2. Rear Wiper Rocker Switch (optional)

Low position: Off



High position: On

Note: indicator light activates when wiper is on.

3. Front Work Light Rocker Switch (optional)

Low position: Off

High position: On

Note: indicator light activates when work lights are on.

4. Rear Work Light Rocker Switch (optional)

Low position: Off

High position: On

Note: indicator light activates when work light is on.

5. Head Lights Rocker Switch (optional)

Low position: Off

High position: On

Note: indicator light activates when head lights are on.

6. Front and Rear Washer Rocker Switch (optional)

Low position: Momentary – On Rear Washer

Middle position: Off

High position: Momentary – On Front Washer

7. Turn Signal Rocker Switch (optional)

Left position: On

Middle position: Off

Right position: On

Right Switch Plate

1. Beacon Rocker Switch (standard)

Low position: Off

High position: On

Note: indicator light activates when beacon is on.

2. Hazard Rocker Switch (optional)

Low position: Off

High position: On

Note: indicator light activates when 4-way flashers are on.

3. Air Conditioner Rocker Switch (optional)

Low position: Off

High position: On

Note: indicator light activates when air conditioner is on.



4. Fan Rotary Switch (optional)

Indicator mark above switch indicates whether fan is operational or not.

5. Temperature Control Rotary Switch (optional)

Indicator mark at lower left corner indicates current temperature setting. Rotate to increase heat output or to decrease heat output of heating system. When air conditioner is being used, it is recommended that the switch be at maximum cooling position.

Cab Circuit Protection

The Tektite ROPS cab is wired to provide maximum protection against accidental battery rundown and circuit overload. A relay in the cab is ignition activated and prevents the operator from accidentally leaving fan motors, lights on after turning the tractor off and leaving for the day. A circuit breaker is provided to prevent the cab electrical components from drawing more power than they should be able to from a dead short. The cab electrical components are also fused individually, and the fuse block is located in the headliner, directly above the door opening on the left side. Locate the 3" snap cap, and with a small flat screw driver you can remove the cap to examine the fuses provided. A decal on the fuse block indicates which fuse is for which electrical option.

After your ROPS Cab has been installed:

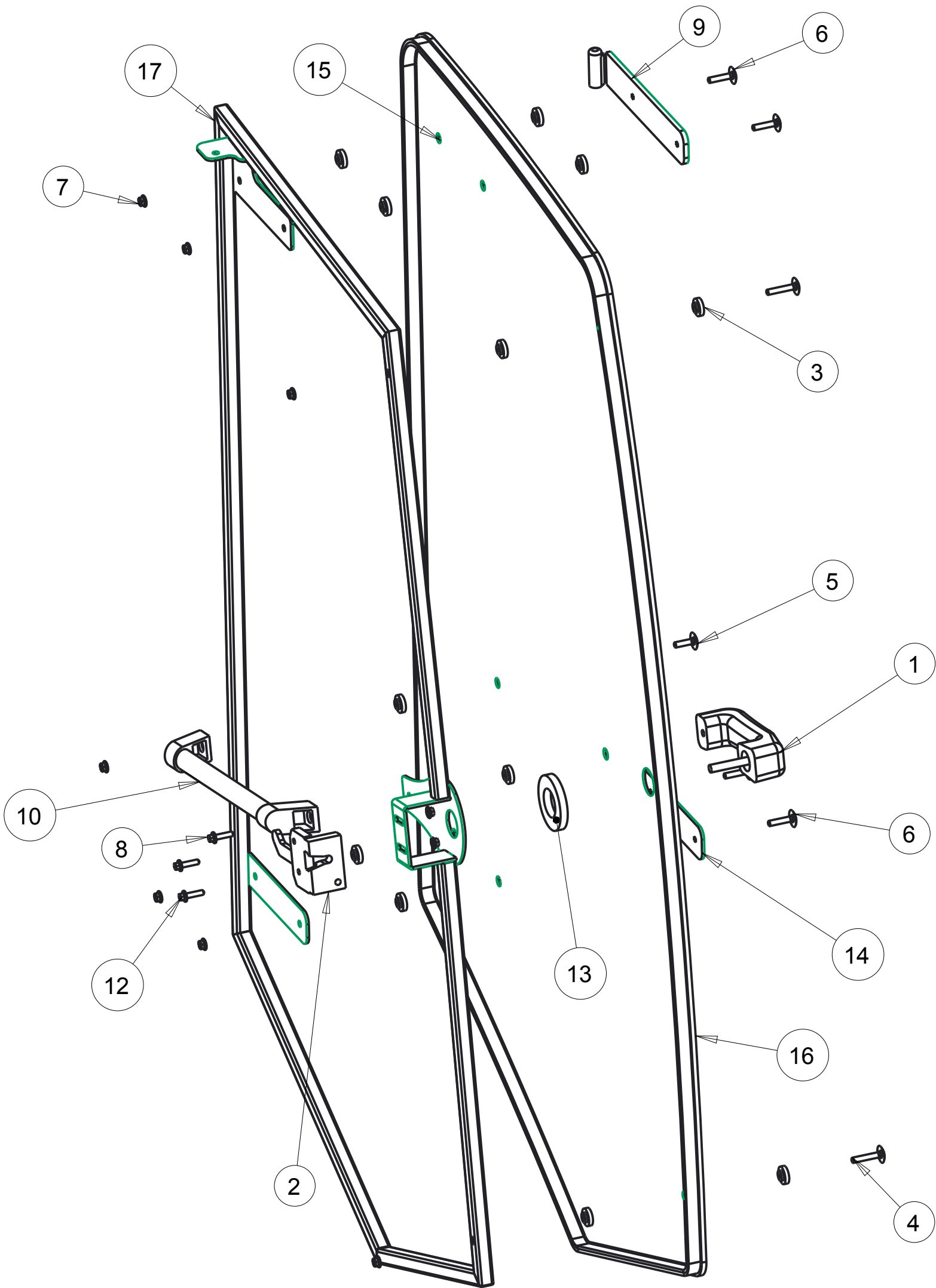
Before starting a mower equipped with a Tektite ROPS cab:

1. Clear the operator platform of all tools. Tools left in or around the ROPS and mower can cause operator interference which could lead to bodily injury and/or damage the machine.
2. Inspect the ROPS and mower to ensure all bolts are tight and re-tighten if required.
3. Ensure that all pedals, levers, and controls have adequate clearance for normal operation.
4. Ensure that all electrical components of both the ROPS and mower operate normally.
5. Ensure your door latches properly onto the striker pin. Immediately after installation, the ROPS frame may flex slightly from installation, and the door latch will need to be re-aligned for proper operation. Loosen the striker pin, striker mounting plate and door latch as necessary to get a proper alignment of the door striker.

Service Parts Breakdowns:

Following are parts breakdowns for components that may require service parts replacement during the life of the ROPS. If you require replacement parts, please contact the dealer that you purchased the ROPS from and indicate which parts you require.

| Index | Service Part # | File Name | Description | Qty |
|-------|----------------|----------------------|---------------------------------|-----|
| 1 | A00-0001 | DLP-HANDLE | Outside Push Button Handle | 1 |
| 2 | A00-0002 | LEFT-LATCH | Suicide Door Left Latch | 1 |
| 3 | A00-0013 | TEKT-0009 | 5MM Bushing | 15 |
| 4 | A00-0018 | STEP-BOLT1-4X1-1-2 | Step Bolt, 1/4" x 1 1/2", MB | 2 |
| 5 | A00-0019 | STEP-BOLT1-4X1 | Step Bolt, 1/4" x 1", MB | 1 |
| 6 | A00-0020 | STEP-BOLT1-4X1-1-4 | Step Bolt, 1/4" x 1 1/4", MB | 4 |
| 7 | A00-0021 | FLANGE-NUT-1-4 | Flange Nut, 1/4", YD | 9 |
| 8 | A00-0022 | FLANGE_BOLT_M6X25 | Flange Bolt, M6x25, YD | 1 |
| 9 | A00-0039 | TEKT-ASM-001 | Left Door Hinge Weldment, Upper | 1 |
| 10 | A00-0040 | REID-RST-160-RST-163 | Grab Handle | 1 |
| 11 | A00-0041 | TEKTITE-DECAL | Tektite Cab Decal - Solid White | 1 |
| 12 | A00-0118 | FLANGE_BOLT_1-4X1 | Flange Bolt, 1/4" x 1", YD | 2 |
| 13 | A00-0177 | TEKT-0068 | Handle Washer Spacer | 1 |
| 14 | A00-0228 | TEKT-ASM-029 | Left Door Hinge Weldment, Lower | 1 |
| 15 | K01-0002 | KUF2880-007 | Door Glass | 1 |
| 16 | K01-0006 | KUF2880-052 | Door Weatherstripping | 1 |
| 17 | K01-0007 | KUF2880-ASM-008 | Left Door Frame Weldment | 1 |



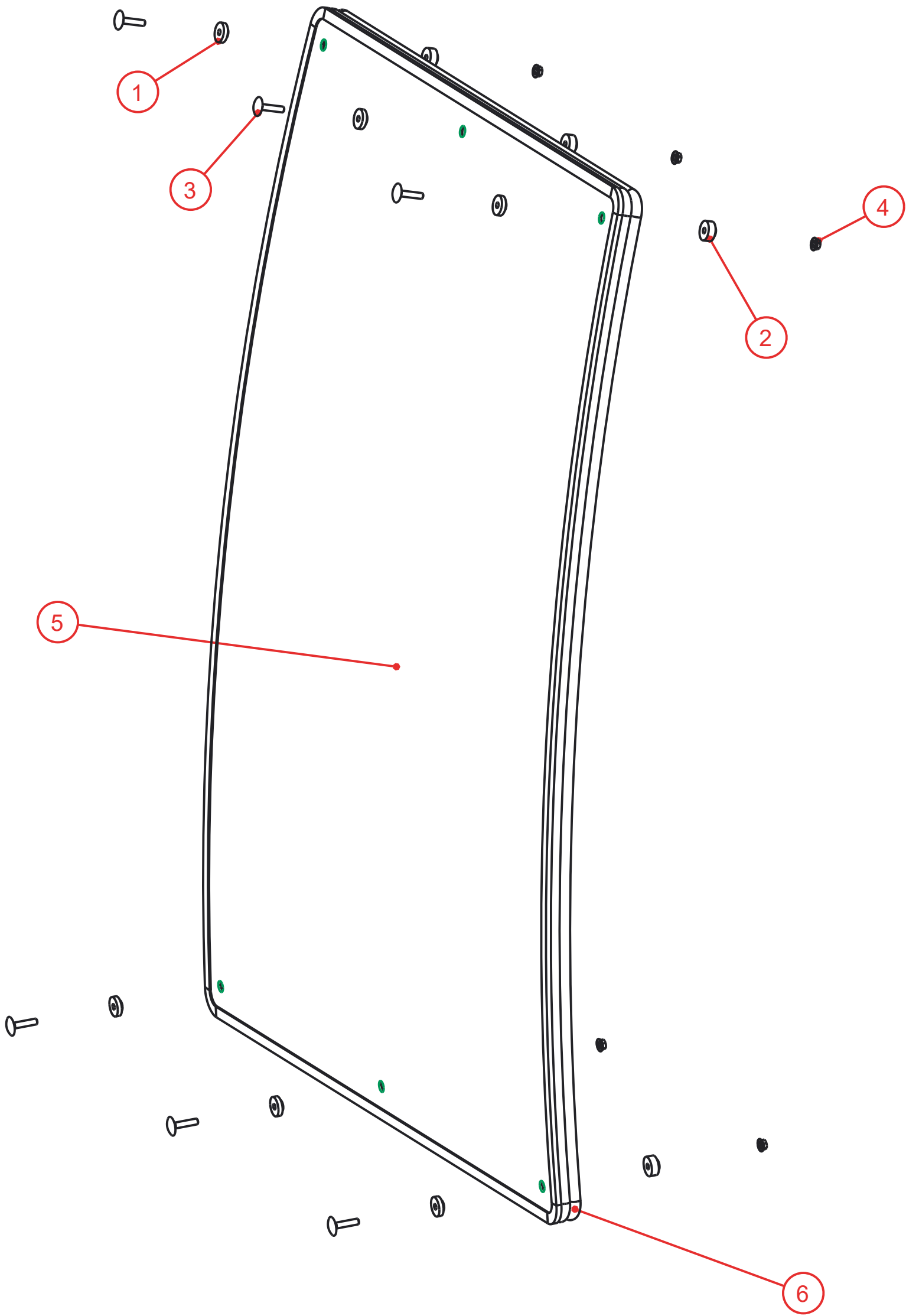
SCALE 0.180
Notice of Confidentiality

This material is property of Tektite Manufacturing Inc and is not to be used by the recipient for any purpose other than the purpose for which it was transmitted. The material remains the property of Tektite and shall be returned upon request. The material may not be reproduced or disclosed to third parties without the written consent of Tektite.

Tolerances:
Unless otherwise specified
X.X = $\pm 1/16"$
Angular = $\pm 1.0^\circ$

| | | | | | |
|---|---------------------|--|--|--|--|
| Tektite Manufacturing Inc. 24157 Hwy 3, Box 639, Winkler MB, R6W 4A8, Canada | | | | | |
| Req'd: | CNC: | Description: Left Door Parts Blow-out | | | |
| Drawn By: Daryl Furkalo | Date: 2014-04-02 | Units: Imp. | File Name: KUF2880-ASM-020-OPMANUAL | | |
| Checked By: | Date: | Size: B | | | |

| Index | Service Part # | File Name | Description | Qty |
|-------|----------------|--------------------|------------------------------|-----|
| 1 | A00-0013 | TEKT-0009 | 5MM Bushing | 6 |
| 2 | A00-0014 | TEKT-0092 | Thick Bushing | 6 |
| 3 | A00-0020 | STEP-BOLT1-4X1-1-4 | Step Bolt, 1/4" x 1 1/4", MB | 6 |
| 4 | A00-0021 | FLANGE-NUT-1-4 | Flange Nut, 1/4", YD | 6 |
| 5 | K01-0004 | KUF2880-009 | Windshield Glass | 1 |
| 6 | K01-0010 | KUF2880-055 | Windshield Seal | 1 |



SCALE 0.200

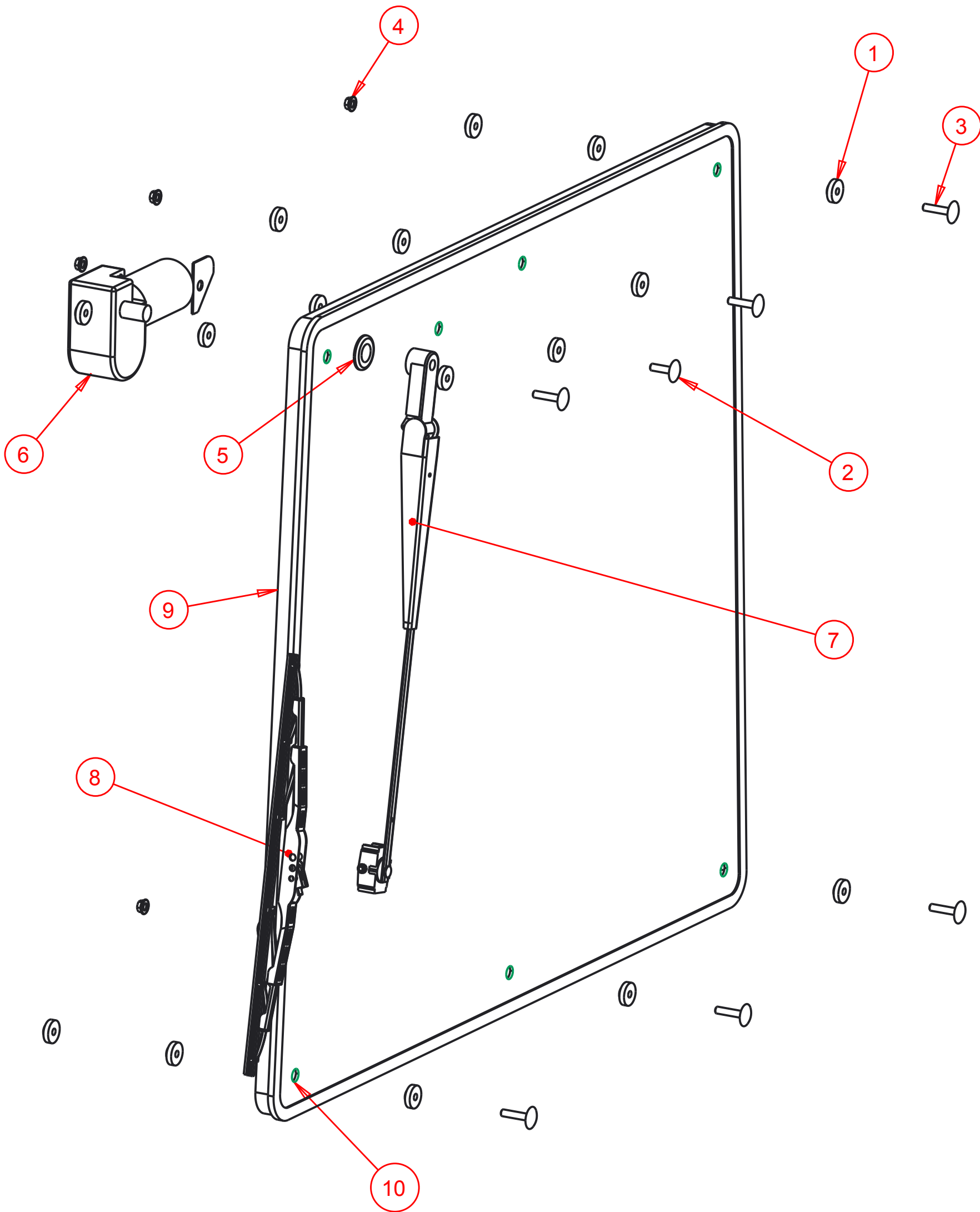
Notice of Confidentiality

This material is property of Tektite Manufacturing Inc and is not to be used by the recipient for any purpose other than the purpose for which it was transmitted. The material remains the property of Tektite and shall be returned upon request. The material may not be reproduced or disclosed to third parties without the written consent of Tektite.

Tolerances:
Unless otherwise specified
X.X = ± 1/16"
Angular = ± 1.0°

| | | | | | |
|---|---------------------|-------------------------------------|--|--|--|
| Tektite Manufacturing Inc. 24157 Hwy 3, Box 639, Winkler MB, R6W 4A8, Canada | | | | | |
| Req'd: | CNC: | Description: Windshield Assembly | | | |
| Drawn By: Daryl Furkalo | Date: 2017-07-19 | Units: Imp. | File Name: KUF2880-ASM-O18-OPMANUAL | | |
| Checked By: | Date: | Size: B | | | |

| Index | Service Part # | File Name | Description | Qty |
|-------|----------------|--------------------|--|-----|
| 1 | A00-0013 | TEKT-0009 | 5MM Bushing | 20 |
| 2 | A00-0019 | STEP-BOLT1-4X1 | Step Bolt, 1/4" x 1", MB | 1 |
| 3 | A00-0020 | STEP-BOLT1-4X1-1-4 | Step Bolt, 1/4" x 1 1/4", MB | 6 |
| 4 | A00-0021 | FLANGE-NUT-1-4 | Flange Nut, 1/4", YD | 7 |
| 5 | A00-0033 | 315-080 | Rear Wiper Shaft Grommet | 1 |
| 6 | A00-0043 | WWF-MOTOR | WWF Wiper Motor, 1" Shaft | 1 |
| 7 | A00-0108 | TEKT-ASM-037 | WWF, Adjustable Radial Arm, 15" to 19" | 1 |
| 8 | A00-0109 | 302-1160_BLADE | Wiper Blade, 16", Narrow Saddle | 1 |
| 9 | K01-0009 | KUF2880-054 | Rear Window Weatherstripping | 1 |
| 10 | ko1-0005 | KUF2880-023 | Rear Window Glass | 1 |



SCALE 0.250

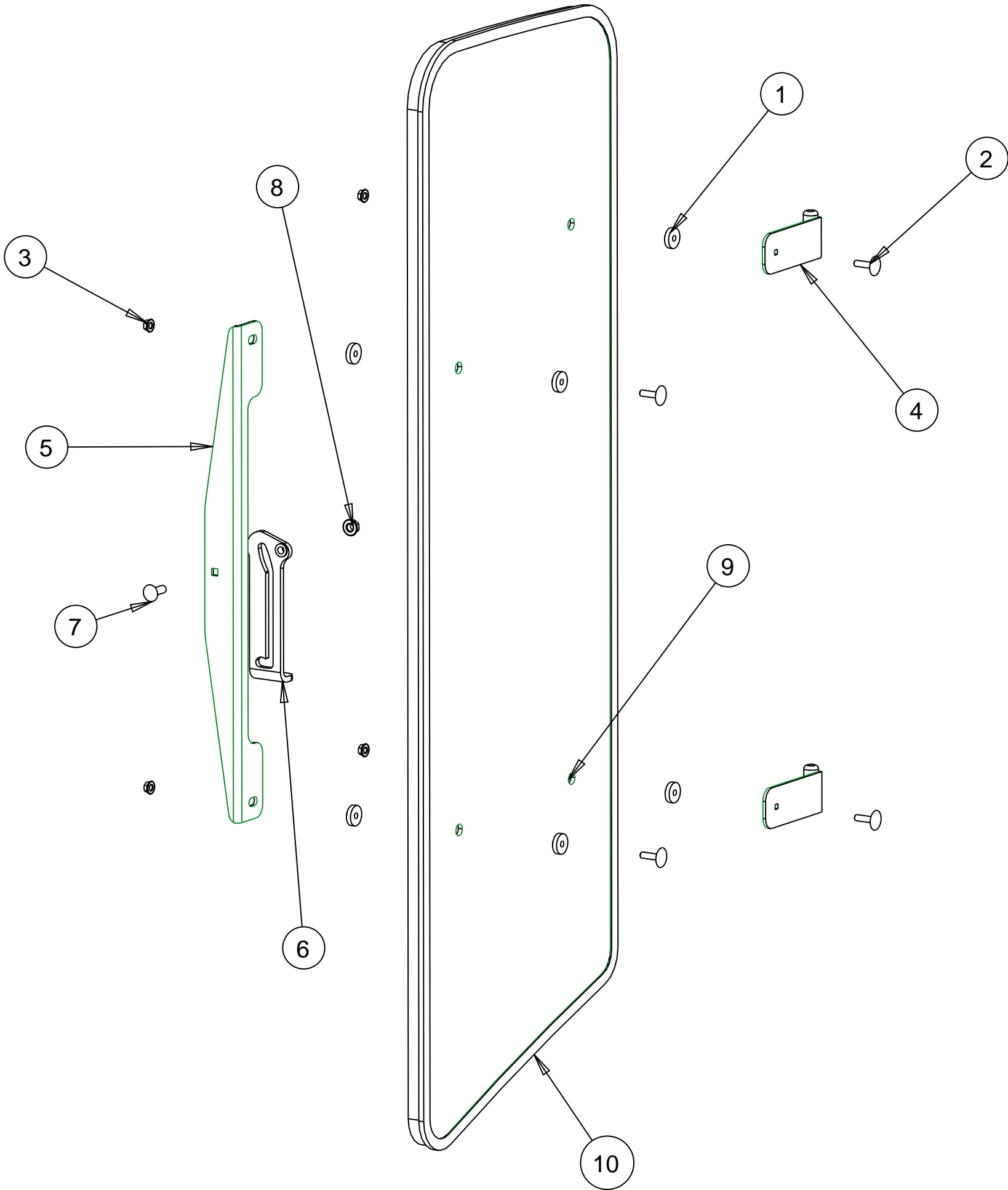
Notice of Confidentiality

This material is property of Tektite Manufacturing Inc and is not to be used by the recipient for any purpose other than the purpose for which it was transmitted. The material remains the property of Tektite and shall be returned upon request. The material may not be reproduced or disclosed to third parties without the written consent of Tektite.

Tolerances:
Unless otherwise specified
X.X = ± 1/16"
Angular = ± 1.0°

| | | | | |
|---|---------------------|--|--|--|
| Tektite Manufacturing Inc. 24157 Hwy 3, Box 639, Winkler MB, R6W 4A8, Canada | | | | |
| Req'd: | CNC: | Description: Rear Window Assembly w/Wiper | | |
| Drawn By: Daryl Furkalo | Date: 2014-10-30 | Units: Imp. | File Name: KUF2880-ASM-019-OPMANUAL | |
| Checked By: | Date: | Size: B | | |

| Index | Service Part # | File Name | Description | Qty |
|-------|----------------|----------------------|-----------------------------------|-----|
| 1 | A00-0013 | TEKT-0009 | 5MM Bushing | 8 |
| 2 | A00-0019 | STEP-BOLT1-4X1 | Step Bolt, 1/4" x 1", MB | 4 |
| 3 | A00-0021 | FLANGE-NUT-1-4 | Flange Nut, 1/4", YD | 4 |
| 4 | A00-0044 | TEKT-ASM-002 | Side Window Hinge Weldment | 2 |
| 5 | A00-0045 | TEKT-0004 | Side Window Slider Bracket | 1 |
| 6 | A00-0057 | TEKT-0020MIR | Side Window Latch, L60776 | 1 |
| 7 | A00-0058 | CARRIAGE_BOLT-5-16X1 | Bolt, Carriage, 5/16"x 1", YD | 1 |
| 8 | A00-0059 | FLANGE-NUT-5-16 | Flange Nut, 5/16", YD | 1 |
| 9 | K01-0003 | KUF2880-008 | Side Window Glass | 1 |
| 10 | K01-0008 | KUF2880-053 | Left Side Window Weatherstripping | 1 |



SCALE 0.200

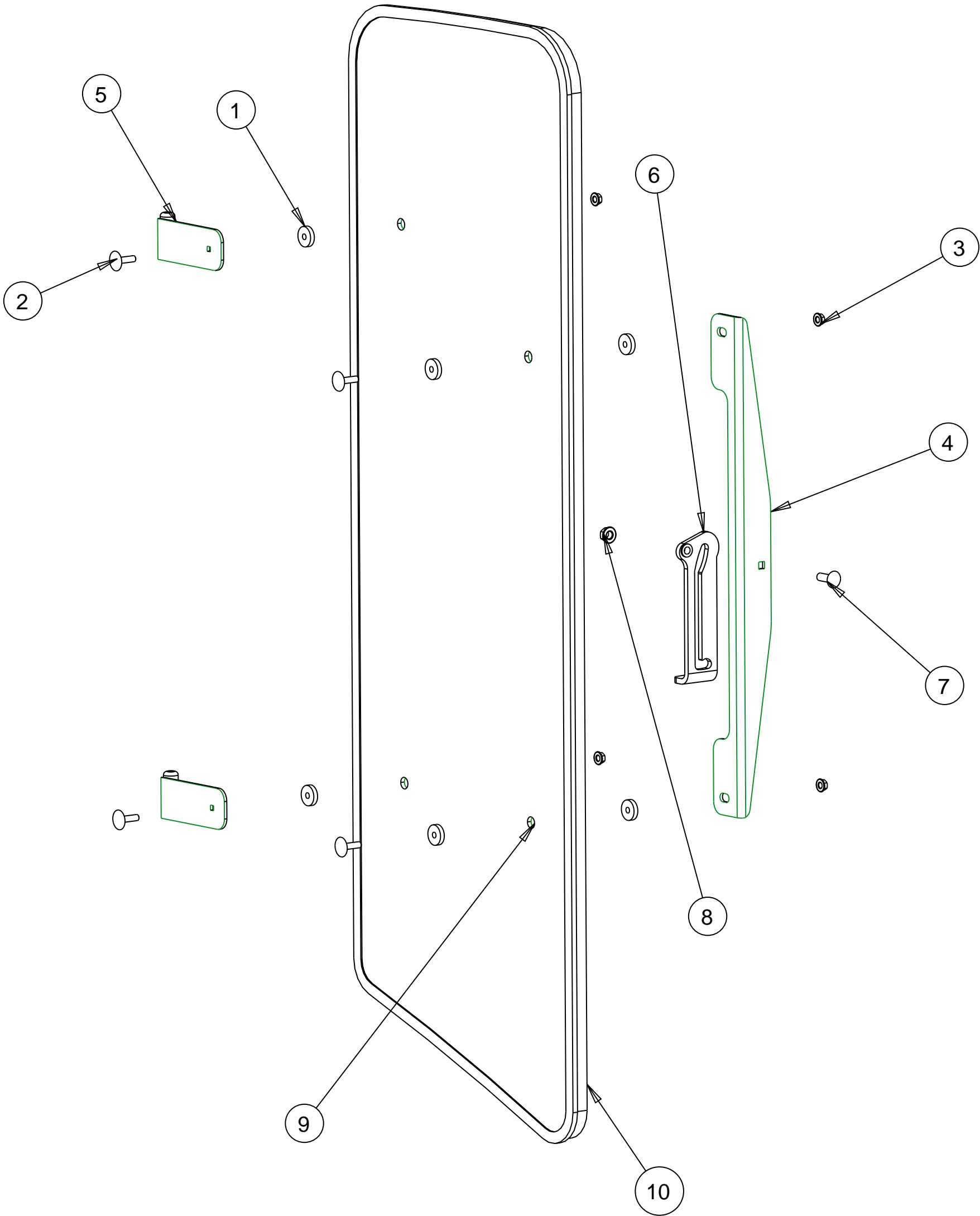
Notice of Confidentiality

This material is property of Tektite Manufacturing Inc and is not to be used by the recipient for any purpose other than the purpose for which it was transmitted. The material remains the property of Tektite and shall be returned upon request. The material may not be reproduced or disclosed to third parties without the written consent of Tektite.

Tolerances:
Unless otherwise specified
X.X = ± 1/16"
Angular = ± 1.0 °

| | | | | | |
|---|---------------------|---|--|--|--|
| Tektite Manufacturing Inc. 24157 Hwy 3, Box 639, Winkler MB, R6W 4A8, Canada | | | | | |
| Req'd: | CNC: | Description: Left Side Window Assembly | | | |
| Drawn By: Daryl Furkalo | Date: 2009-02-24 | Units: Imp. | File Name: KUF2880-ASM-009-OPMANUAL | | |
| Checked By: | Date: | Size: B | | | |

| Index | Service Part # | File Name | Description | Qty |
|-------|----------------|----------------------|-----------------------------------|-----|
| 1 | A00-0013 | TEKT-0009 | 5MM Bushing | 8 |
| 2 | A00-0019 | STEP-BOLT1-4X1 | Step Bolt, 1/4" x 1", MB | 4 |
| 3 | A00-0021 | FLANGE-NUT-1-4 | Flange Nut, 1/4", YD | 4 |
| 4 | A00-0045 | TEKT-0004 | Side Window Slider Bracket | 1 |
| 5 | A00-0046 | TEKT-ASM-002R | Side Window Hinge Right | 2 |
| 6 | A00-0056 | TEKT-0020 | Side Window Latch, L60775 | 1 |
| 7 | A00-0058 | CARRIAGE_BOLT-5-16X1 | Bolt, Carriage, 5/16"x 1", YD | 1 |
| 8 | A00-0059 | FLANGE-NUT-5-16 | Flange Nut, 5/16", YD | 1 |
| 9 | K01-0003 | KUF2880-008 | Side Window Glass | 1 |
| 10 | K01-0008 | KUF2880-053R | Left Side Window Weatherstripping | 1 |



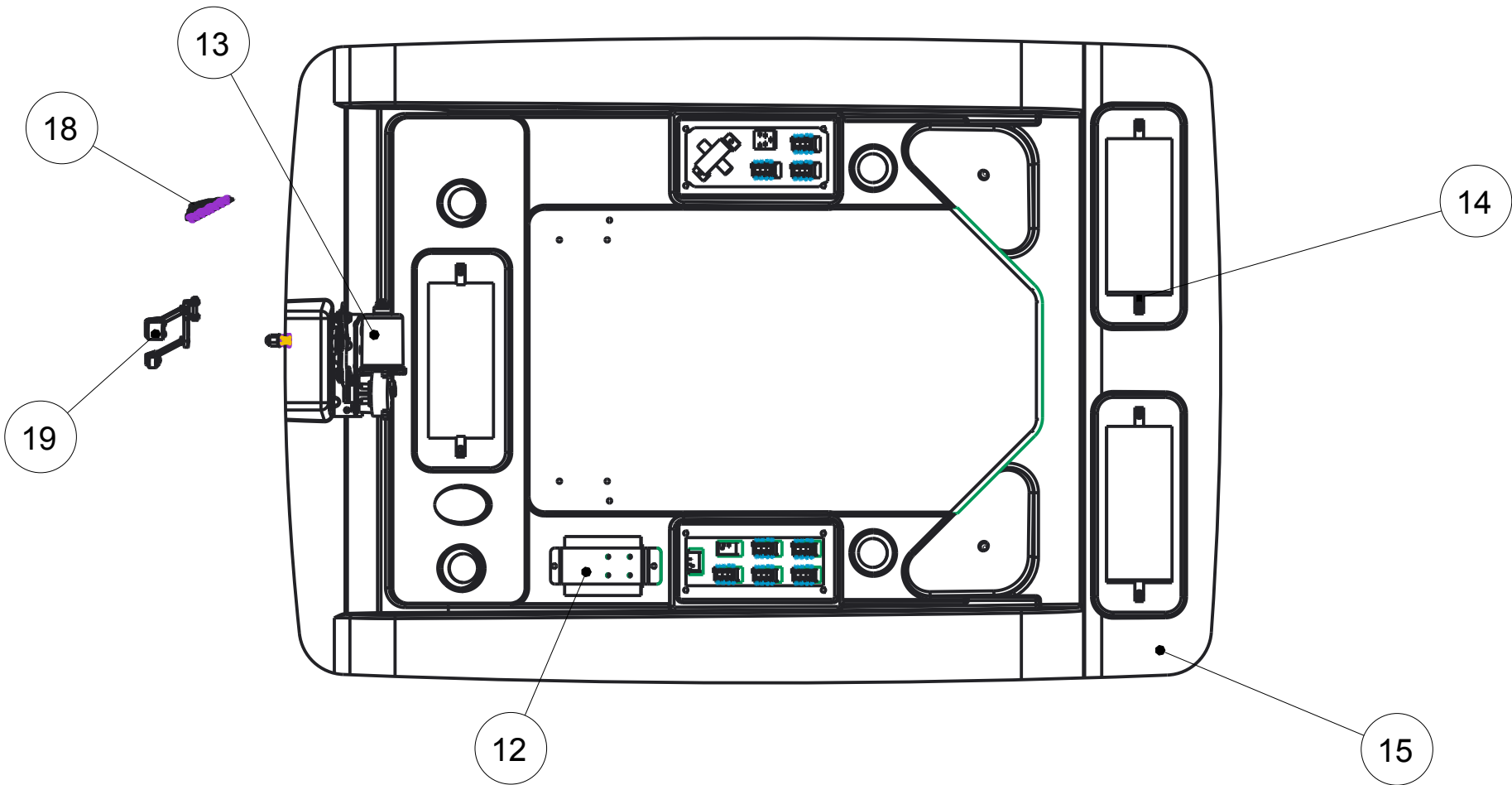
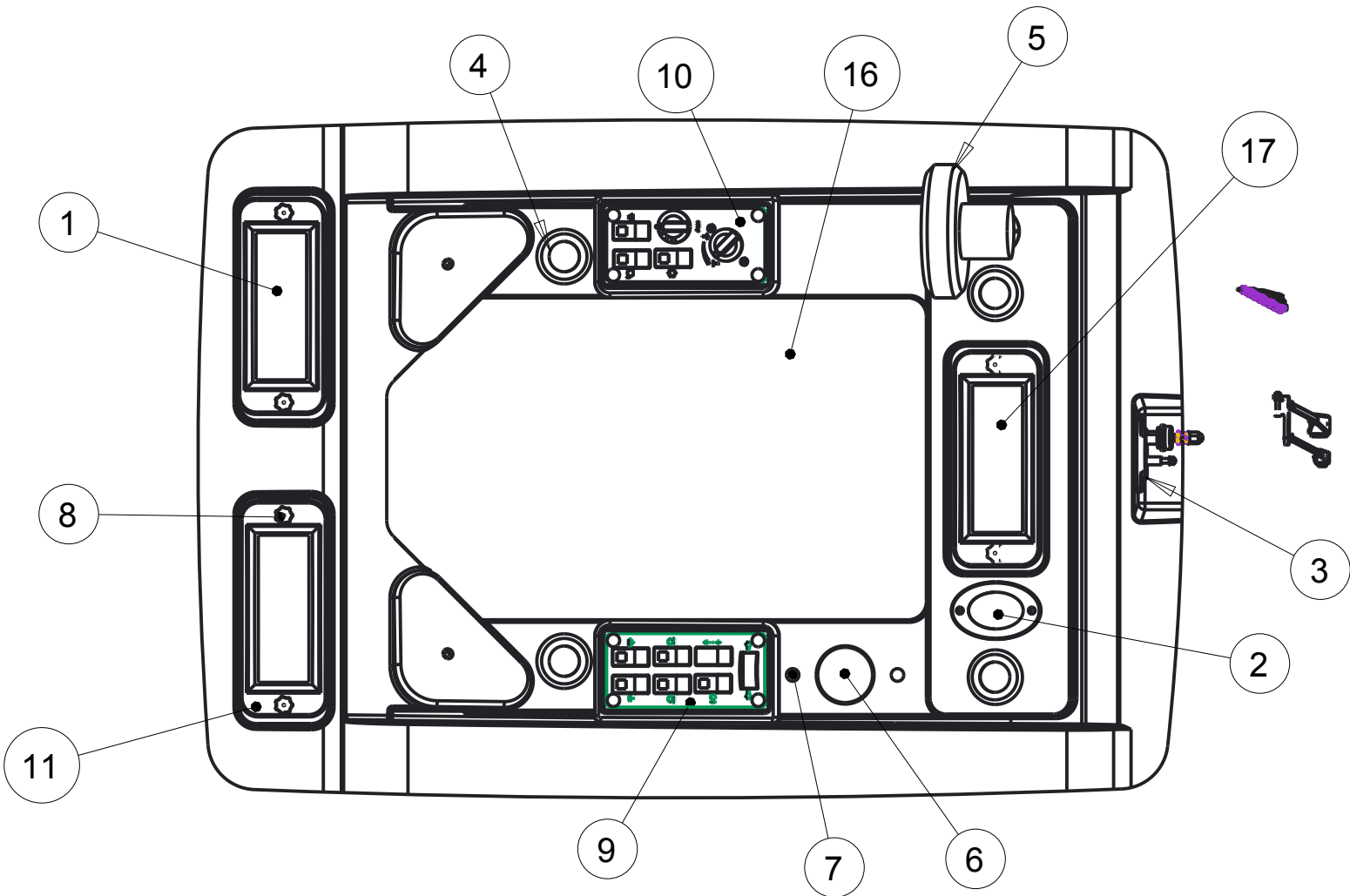
SCALE 0.220
Notice of Confidentiality

This material is property of Tektite Manufacturing Inc and is not to be used by the recipient for any purpose other than the purpose for which it was transmitted. The material remains the property of Tektite and shall be returned upon request. The material may not be reproduced or disclosed to third parties without the written consent of Tektite.

Tolerances:
Unless otherwise specified
X.X = ± 1/16"
Angular = ± 1.0 °

| | | | | |
|---|---------------------|--|---|--|
| Tektite Manufacturing Inc. 24157 Hwy 3, Box 639, Winkler MB, R6W 4A8, Canada | | | | |
| Req'd: | CNC: | Description: Right Side Window Assembly | | |
| Drawn By: Daryl Furkalo | Date: 2009-02-25 | Units: Imp. | File Name: KUF2880-ASM-009R-OPMANUAL | |
| Checked By: | Date: | Size: B | | |

| Index | Service Part # | File Name | Description | Qty |
|-------|----------------|------------------------|---|-----|
| 1 | A00-0006 | TEKT-0074 | Cabin Air Filter | 2 |
| 2 | A00-0016 | TEKT-0075 | Domelight LED | 1 |
| 3 | A00-0017 | 305-1002 | Panto Mount Plate | 1 |
| 4 | A00-0025 | BALL-LOUVER | 2 1/2" Ball Louver | 4 |
| 5 | A00-0026 | OSCILLATING-FAN | Oscillating Fan | 1 |
| 6 | A00-0038 | TEKT-0076 | 3" Plug | 1 |
| 7 | A00-0055 | TEKT-0019 | Fir Tree Fastener | 2 |
| 8 | A00-0070 | REID-KBP-262-KBP-265 | Knob, Knurled, 1/4" | 6 |
| 9 | A00-0071 | LEFT-SWITCHPLATE-ASM | Left Switchplate Assembly | 1 |
| 10 | A00-0072 | TEKT-ASM-030 | Right Switchplate Assembly, 2014 Update | 1 |
| 11 | A00-0073 | FILTER-COVER | Filter Cover | 3 |
| 12 | A00-0074 | TEKT-ASM-004 | Fuse Block Assembly | 1 |
| 13 | A00-0075 | WWJ-MOTOR-ASM | Front Wiper Motor, WWJ | 1 |
| 14 | A00-0076 | TEKT-0026 | 1/4" Panel Nut | 6 |
| 15 | A00-0081 | KUF2880-HEADLINER-REV1 | Headliner | 1 |
| 16 | A00-0082 | KUF2880-049 | Headliner Upholstery | 1 |
| 17 | A00-0083 | KUF2880-060 | Front Filter Upholstery | 1 |
| 18 | A00-0120 | BLADE_24 | Wiper Blade, 24" | 1 |
| 19 | A00-0140 | PANTO_ARM_20 | Wiper Arm, 20" Panto | 1 |



Tektite Manufacturing Inc.
24157 Hwy 3, Box 639, Winkler MB, R6W 4A8, Canada

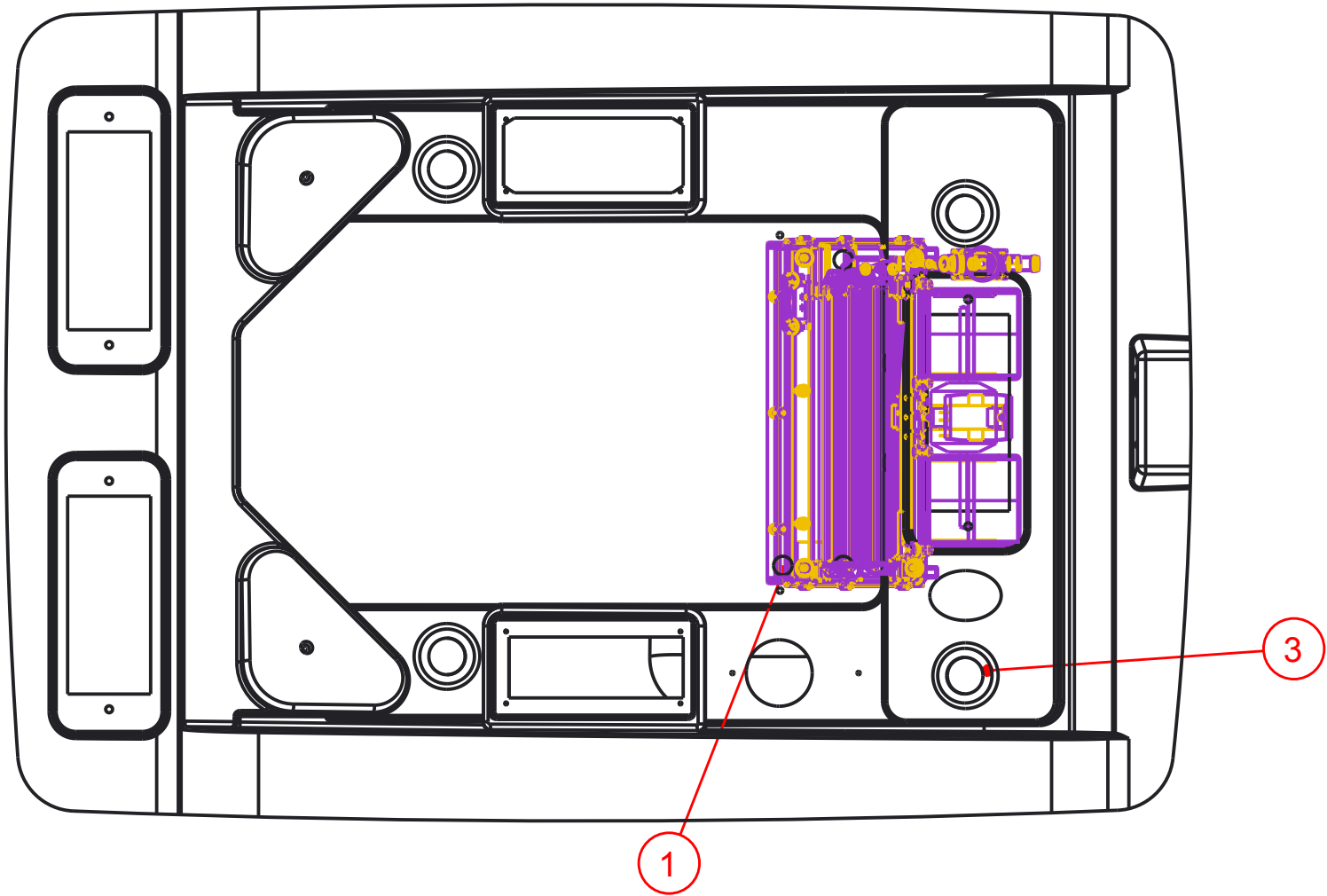
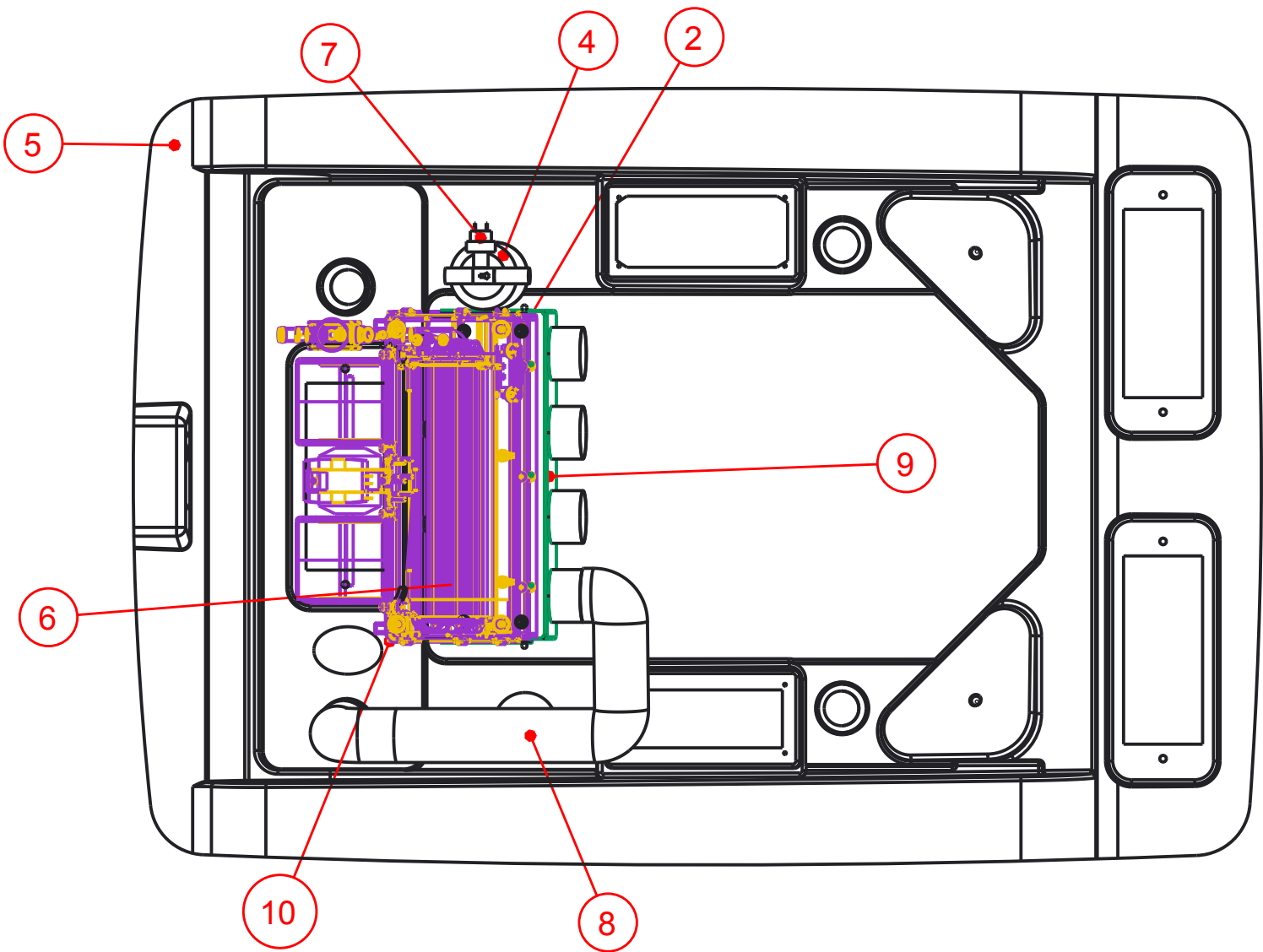
Notice of Confidentiality

This material is property of Tektite Manufacturing Inc and is not to be used by the recipient for any purpose other than the purpose for which it was transmitted. The material remains the property of Tektite and shall be returned upon request. The material may not be reproduced or disclosed to third parties without the written consent of Tektite.

Tolerances:
Unless otherwise specified
X.X = $\pm 1/16"$
Angular = $\pm 1.0^\circ$

| | | | | | |
|----------------------------|--|---------------------|--|--|----------------------------|
| Req'd: | | CNC: | | Description: Headliner Assembly, Mowers | |
| Drawn By: Daryl Furkalo | | Date: 2014-01-02 | | Units: Imp. | File Name: TEKT-ASM-032 |
| Checked By: | | Date: | | Size: B | |

| Index | Service Part # | File Name | Description | Qty |
|-------|----------------|------------------------|-------------------------------|-----|
| 1 | A00-0019 | STEP-BOLT1-4X1 | Step Bolt, 1/4" x 1", MB | 4 |
| 2 | A00-0021 | FLANGE-NUT-1-4 | Flange Nut, 1/4", YD | 4 |
| 3 | A00-0025 | BALL-LOUVER | 2 1/2" Ball Louver | 4 |
| 4 | A00-0028 | TEKT-0088 | Red Dot Drier | 1 |
| 5 | A00-0081 | KUF2880-HEADLINER-REV1 | Headliner | 1 |
| 6 | A00-0105 | R-2300-2_090902 | Heater A/C Blower Unit, 2300 | 1 |
| 7 | A00-0171 | TEKT-0089 | Binary Switch | 1 |
| 8 | A00-0173 | TEKT-0090 | Louver Hose | 1 |
| 9 | A00-0204 | TEKT-ASM-011 | Louver Hose Mount Plate, 2300 | 1 |
| 10 | A00-0205 | TEKT-0008_REV1 | Red Dot 2300 Mount Bracket | 1 |



Tektite Manufacturing Inc.
24157 Hwy 3, Box 639, Winkler MB, R6W 4A8, Canada

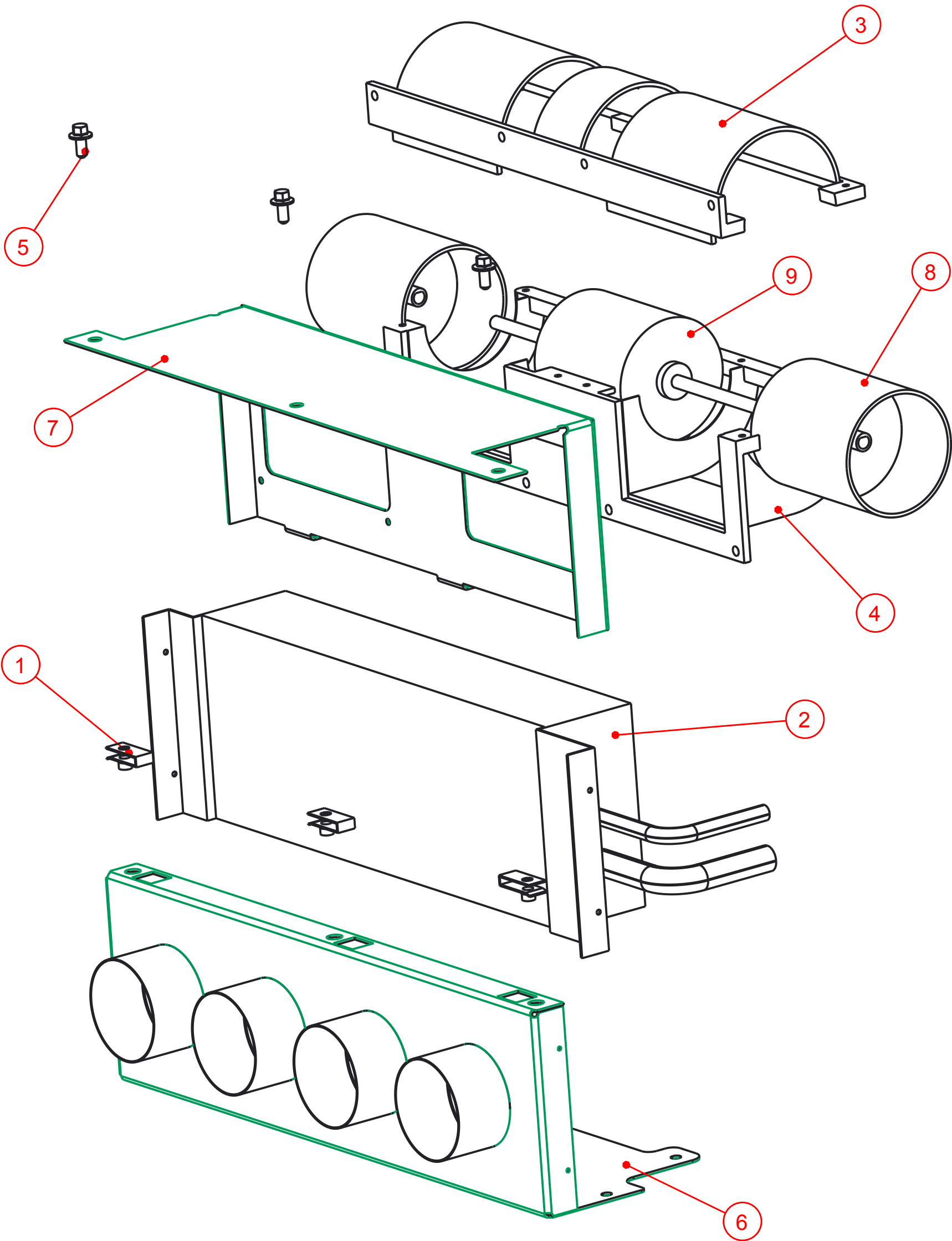
Notice of Confidentiality

This material is property of Tektite Manufacturing Inc and is not to be used by the recipient for any purpose other than the purpose for which it was transmitted. The material remains the property of Tektite and shall be returned upon request. The material may not be reproduced or disclosed to third parties without the written consent of Tektite.

Tolerances:
Unless otherwise specified
X.X = ± 1/16"
Angular = ± 1.0°

| | | | | | |
|-----------------------------------|---------------------|--|-----------------------------------|--|--|
| Req'd: | CNC: | Description: A/C Compatible Additional Parts | | | |
| Drawn By: <i>Daryl Furkalo</i> | Date: 2014-12-12 | Units: Imp. | File Name: TEKT-ASM-O2O_AC-ASM | | |
| Checked By: | Date: | Size: B | | | |

| Index | Service Part # | File Name | Description | Qty |
|-------|----------------|---------------------|-------------------------------|-----|
| 1 | A00-0076 | TEKT-0026 | 1/4" Panel Nut | 3 |
| 2 | A00-0089 | TEKT-0059 | Heater Core | 1 |
| 3 | A00-0090 | TEKT-0065 | Upper Blower Housing | 1 |
| 4 | A00-0091 | TEKT-0066 | Blower Housing Lower | 1 |
| 5 | A00-0100 | FLANGE_BOLT_1-4X1-2 | Flange Bolt, 1/4" x 1/2", YD | 3 |
| 6 | A00-0157 | TEKT-ASM-015 | Bottom Heater Shroud Weldment | 1 |
| 7 | A00-0158 | TEKT-ASM-014 | Top Heater Shroud Weldment | 1 |
| 8 | A00-0159 | TEKT-0067 | Rotary Squirrel Cage | 2 |
| 9 | A00-0162 | TEKT-0081 | Fan Motor | 1 |



Tektite Manufacturing Inc.
24157 Hwy 3, Box 639, Winkler MB, R6W 4A8, Canada

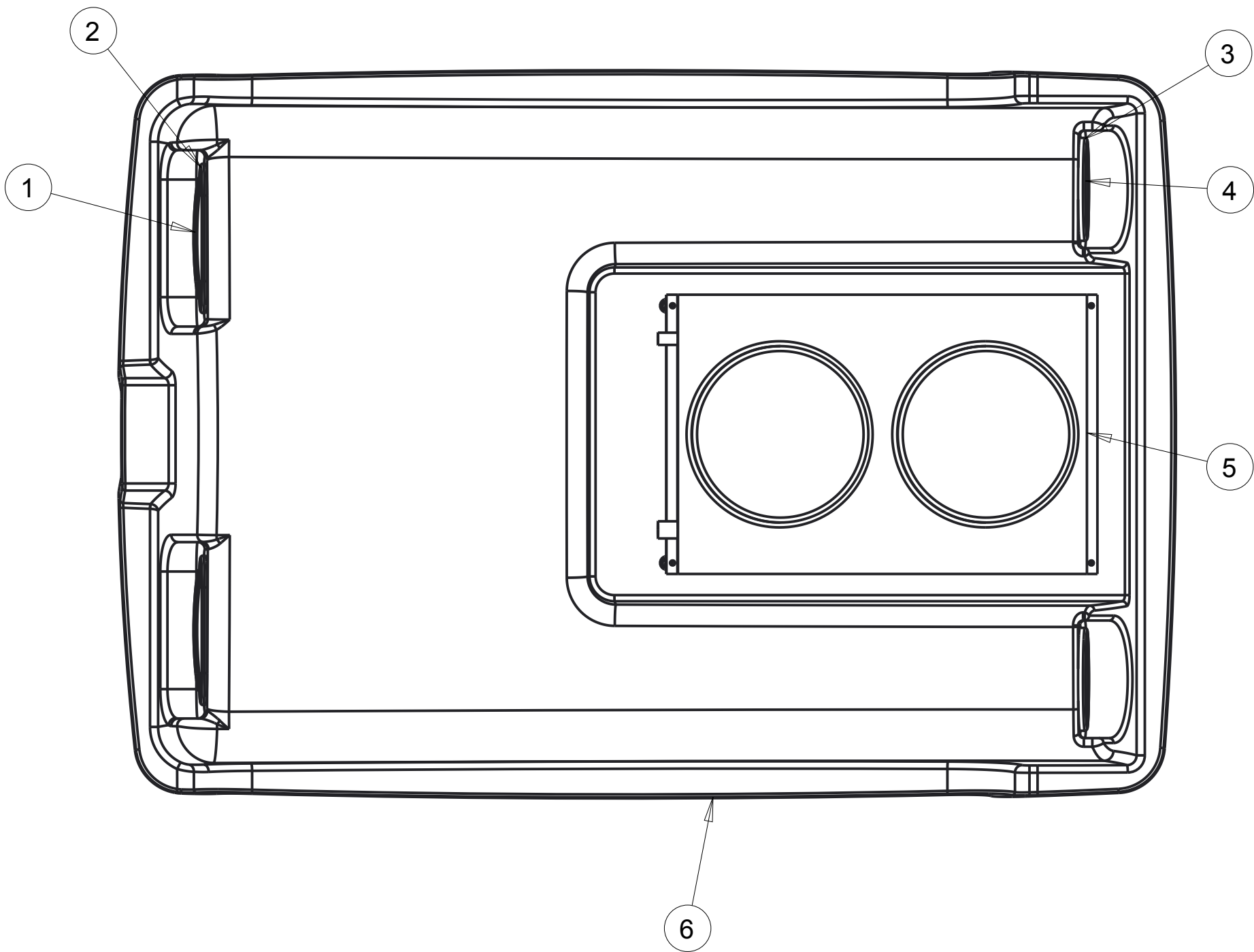
Notice of Confidentiality

This material is property of Tektite Manufacturing Inc and is not to be used by the recipient for any purpose other than the purpose for which it was transmitted. The material remains the property of Tektite and shall be returned upon request. The material may not be reproduced or disclosed to third parties without the written consent of Tektite.

Tolerances:
Unless otherwise specified
X.X = $\pm 1/16"$
Angular = $\pm 1.0^\circ$

| | | | | | | | | | | | |
|-----------------------------------|--|--|--|---------------------|--|--|--|---|-------------------------------|--|--|
| Req'd: | | | | CNC: | | | | Description: Tektite In-House Heater Assembly | | | |
| Drawn By: <i>Daryl Furkalo</i> | | | | Date: 2014-09-17 | | | | Units: Imp. | File Name: TEKT-ASM-016_OP | | |
| Checked By: | | | | Date: | | | | Size: B | | | |

| Index | Service Part # | File Name | Description | Qty |
|-------|----------------|-------------------|------------------------------------|-----|
| 1 | A00-0008 | TEKT-0077 | Front Turn Signal Light LED, Amber | 2 |
| 2 | A00-0009 | TEKT-0079 | Oval LED Light Grommet | 2 |
| 3 | A00-0010 | TEKT-0078 | Round Grommet, LED Light | 2 |
| 4 | A00-0011 | TEKT-0080 | Round Turn Light | 2 |
| 5 | A00-0078 | RED-DOT-CONDENSOR | Red Dot Condensor 77R1602 | 1 |
| 6 | K01-0015 | KUF2880-ROOF | Roof | 1 |



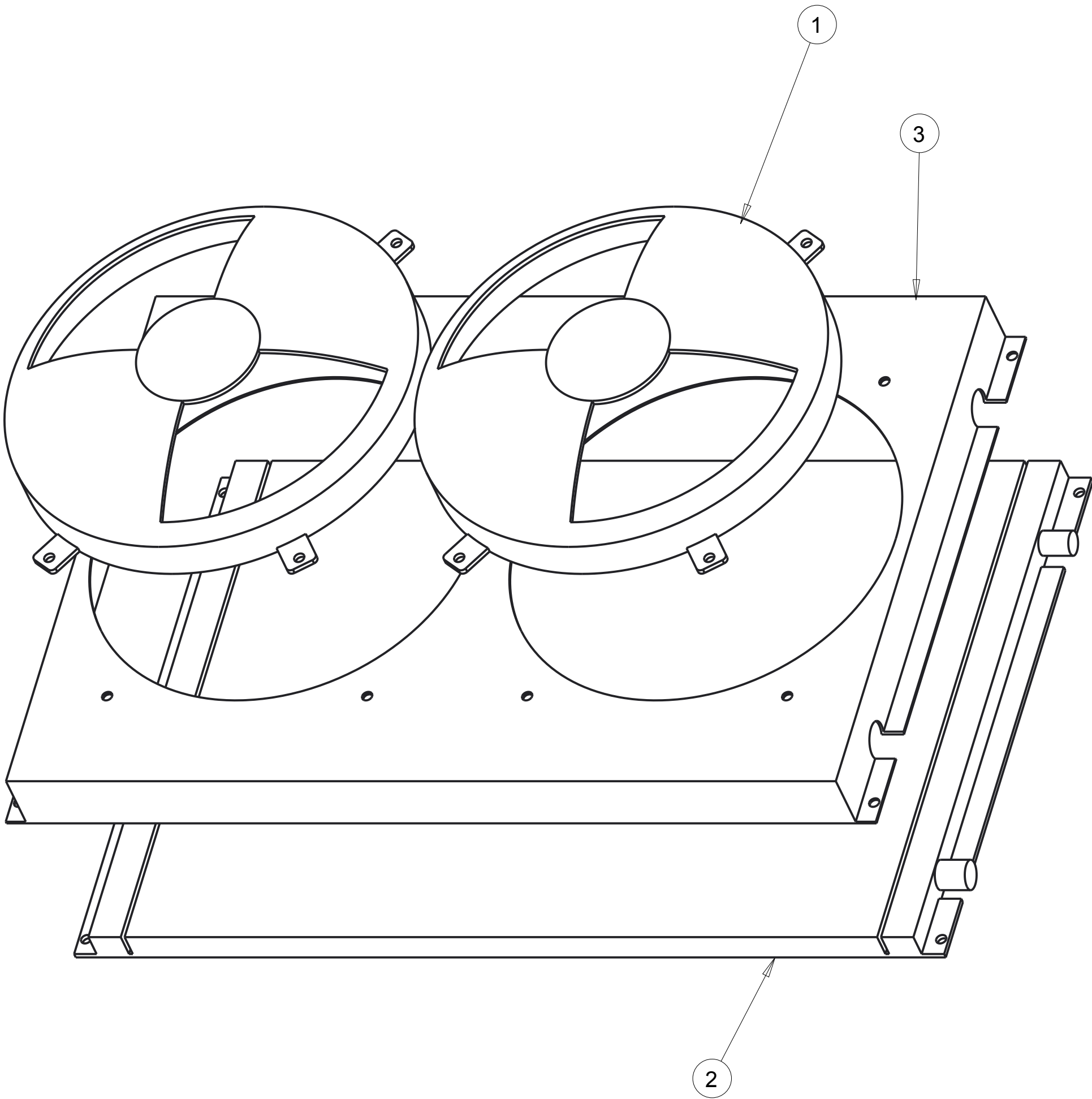
Notice of Confidentiality

This material is property of Tektite Manufacturing Inc and is not to be used by the recipient for any purpose other than the purpose for which it was transmitted. The material remains the property of Tektite and shall be returned upon request. The material may not be reproduced or disclosed to third parties without the written consent of Tektite.

Tolerances:
Unless otherwise specified
X.X = $\pm 1/16"$
Angular = $\pm 1.0^\circ$

| | | | | |
|---|---------------------|-------------------------------|--------------------------------|--|
| Tektite Manufacturing Inc. 24157 Hwy 3, Box 639, Winkler MB, R6W 4A8, Canada | | | | |
| Req'd: | CNC: | Description: Roof Assembly | | |
| Drawn By: Daryl Furkalo | Date: 2013-02-01 | Units: Imp. | File Name: KUF2880-ROOF-ASM | |
| Checked By: | Date: | Size: B | | |

| Index | Service Part # | File Name | Description | Qty |
|-------|----------------|-----------|---------------------------------|-----|
| 1 | A00-0166 | TEKT-0103 | Condensor Fan | 2 |
| 2 | A00-0220 | TEKT-0101 | Base Condenser Coil | 1 |
| 3 | A00-0221 | TEKT-0102 | Condensor Assembly Steel Shroud | 1 |



Notice of Confidentiality

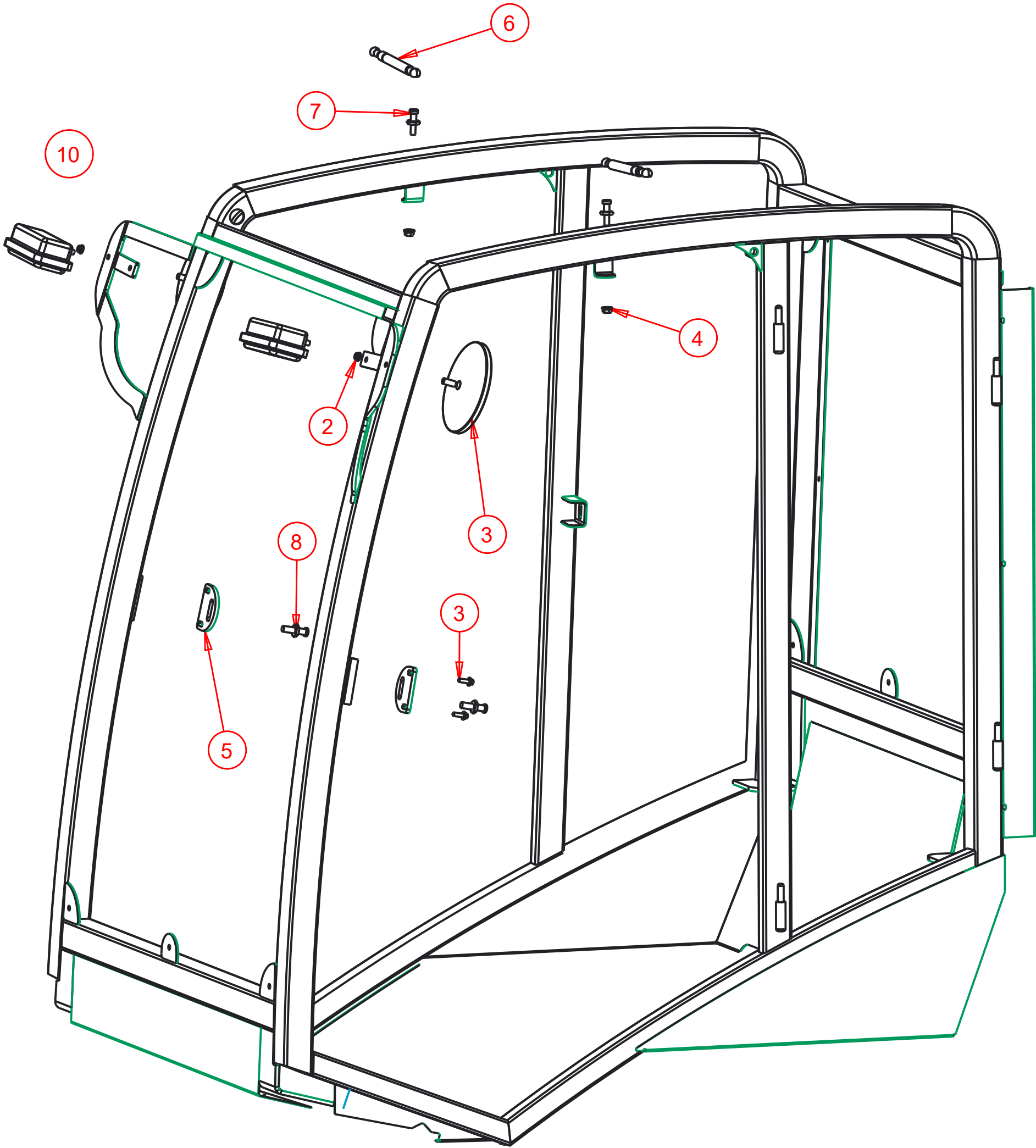
This material is property of Tektite Manufacturing Inc and is not to be used by the recipient for any purpose other than the purpose for which it was transmitted. The material remains the property of Tektite and shall be returned upon request. The material may not be reproduced or disclosed to third parties without the written consent of Tektite.

Tolerances:
Unless otherwise specified

X.X = ± 1/16"
Angular = ± 1.0°

| | | | | | |
|---|---------------------|--|----------------------------|--|--|
| Tektite Manufacturing Inc. 24157 Hwy 3, Box 639, Winkler MB, R6W 4A8, Canada | | | | | |
| Req'd: | CNC: | Description: Condensor Assembly Breakdown | | | |
| Drawn By: Daryl Furkalo | Date: 2013-07-04 | Units: Imp. | File Name: TEKT-ASM-O26 | | |
| Checked By: | Date: | Size: B | | | |

| Index | Service Part # | File Name | Description | Qty |
|-------|----------------|---------------------|----------------------------------|-----|
| 1 | | KUF2880-ASM-025 | Cab Weldment | 1 |
| 2 | A00-0021 | FLANGE-NUT-1-4 | Flange Nut, 1/4", YD | 2 |
| 3 | A00-0023 | FLANGE_BOLT_1-4X3-4 | Flange Bolt, 1/4" x 3/4", YD | 4 |
| 4 | A00-0059 | FLANGE-NUT-5-16 | Flange Nut, 5/16", YD | 2 |
| 5 | A00-0061 | TEKT-0021 | Striker Mounting Plate | 2 |
| 6 | A00-0084 | TEKT-0070 | Gas Shock | 2 |
| 7 | A00-0085 | TEKT-0069 | Gas Shock Stud | 2 |
| 8 | A00-0101 | STRIKER-PIN | Striker Pin | 2 |
| 9 | A00-0141 | ROUND_MIRROR_6_INCH | External 6" Mirror | 2 |
| 10 | A00-0371 | TEKT-0175 | New LED Work Light (Blazer Intl) | 2 |



Tektite Manufacturing Inc.
24157 Hwy 3, Box 639, Winkler MB, R6W 4A8, Canada

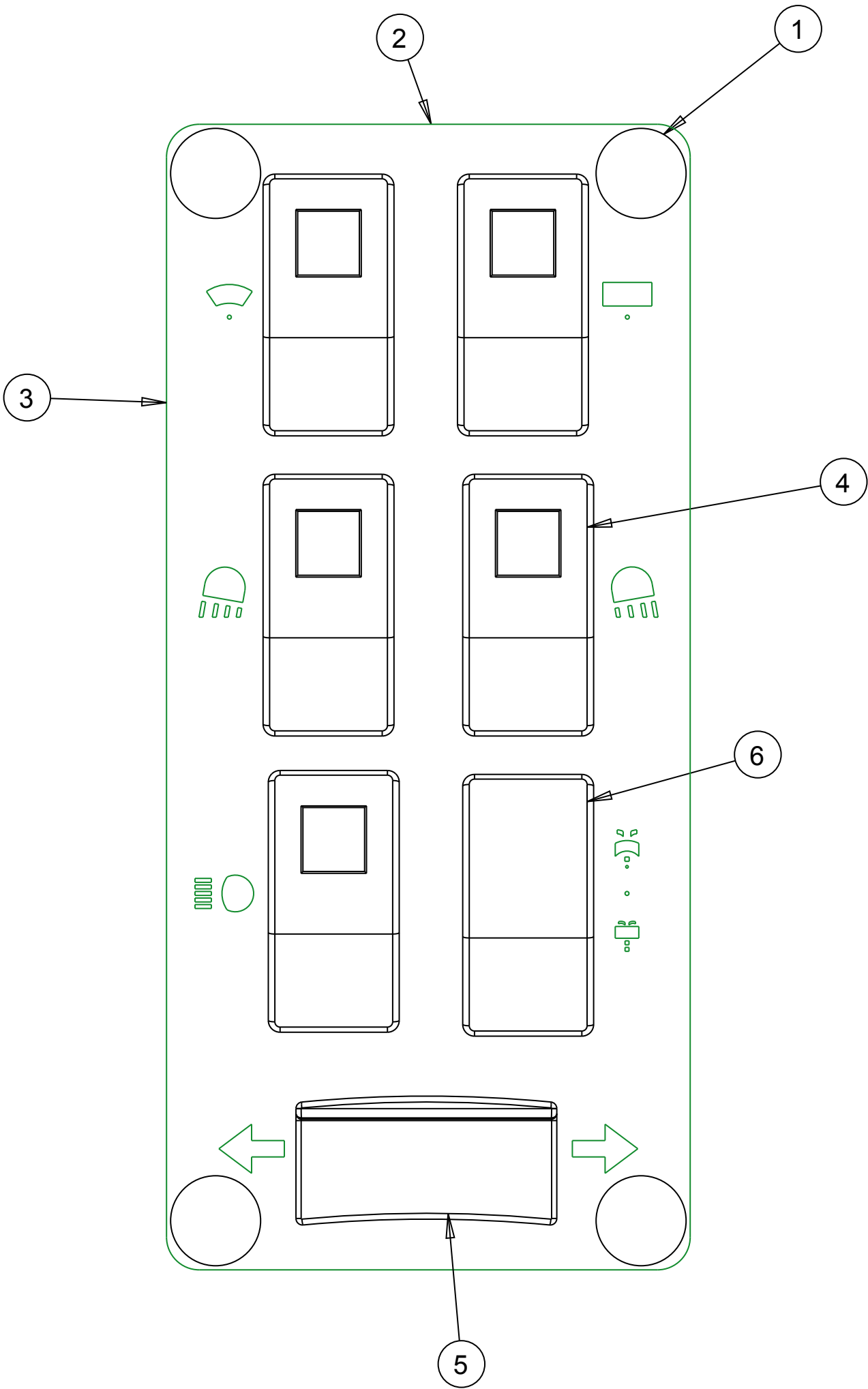
Notice of Confidentiality

This material is property of Tektite Manufacturing Inc and is not to be used by the recipient for any purpose other than the purpose for which it was transmitted. The material remains the property of Tektite and shall be returned upon request. The material may not be reproduced or disclosed to third parties without the written consent of Tektite.

Tolerances:
Unless otherwise specified
X.X = ± 1/16"
Angular = ± 1.0°

| | | | | | | | | | | | |
|-------------|--|--|--|-------|--|--|--|-------------------------|--|--|--|
| Req'd: | | | | CNC: | | | | Description: | | | |
| Drawn By: | | | | Date: | | | | Units: | | | |
| Checked By: | | | | Date: | | | | File Name: | | | |
| | | | | | | | | Imp. KUF2880-ASM-026_OP | | | |
| | | | | | | | | Size: | | | |
| | | | | | | | | B | | | |

| Index | Service Part # | File Name | Description | Qty |
|-------|----------------|----------------------------|---------------------------|-----|
| 1 | A00-0055 | TEKT-0019 | Fir Tree Fastener | 4 |
| 2 | A00-0063 | LEFT-CAB-SWITCHPLATE | Left Switchplate | 1 |
| 3 | A00-0064 | LEFT-CAB-SWITCHPLATE-DECAL | Left Switchplate Decal | 1 |
| 4 | A00-0065 | TEKT-ASM-005 | On-Off Switch w/Lens | 5 |
| 5 | A00-0066 | TEKT-ASM-006 | On-Off-On Rocker No Lens | 1 |
| 6 | A00-0067 | TEKT-ASM-007 | Mom-Off-Mom Rocker Switch | 1 |



SCALE 1.000

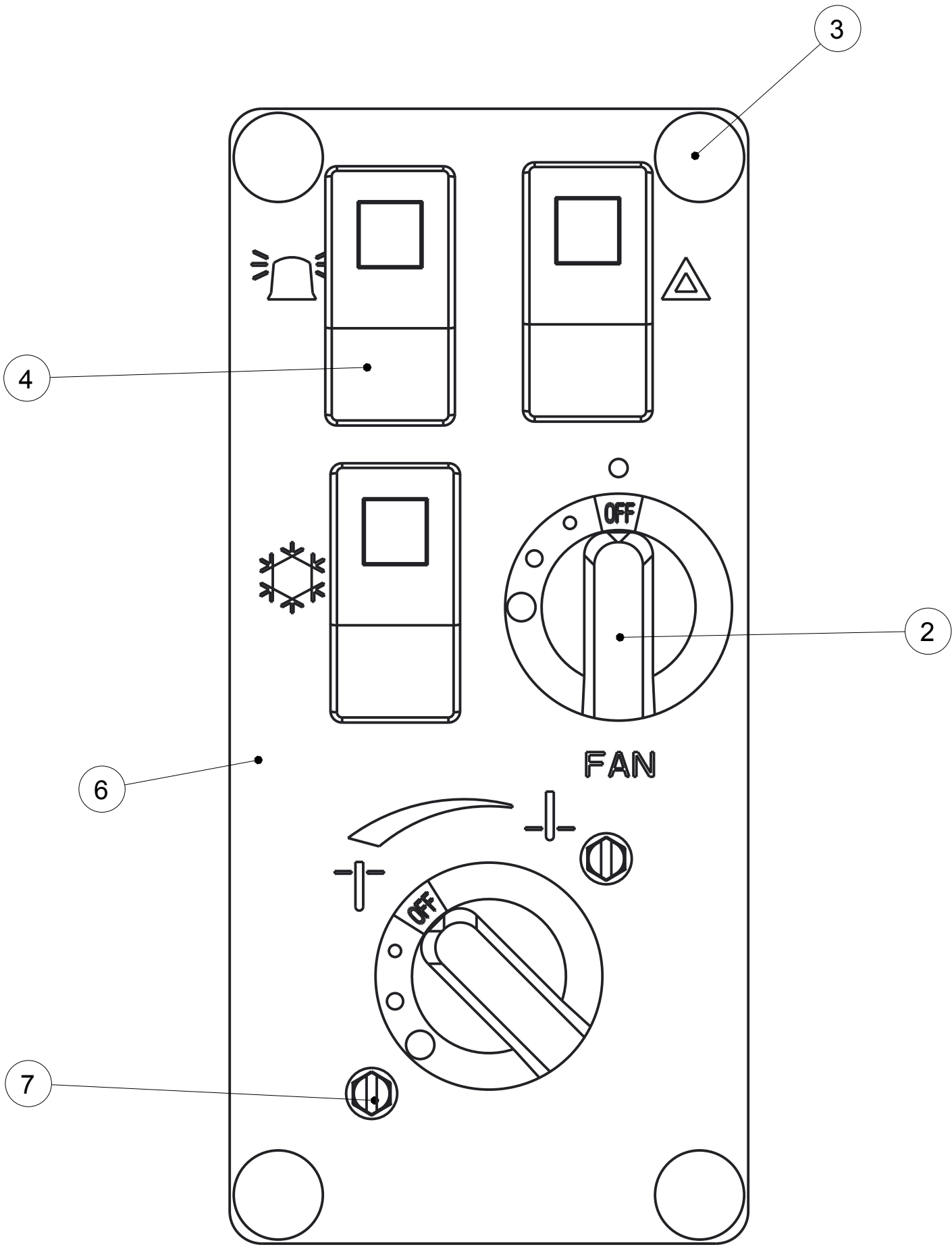
Notice of Confidentiality

This material is property of Tektite Manufacturing Inc and is not to be used by the recipient for any purpose other than the purpose for which it was transmitted. The material remains the property of Tektite and shall be returned upon request. The material may not be reproduced or disclosed to third parties without the written consent of Tektite.

Tolerances:
Unless otherwise specified
X.X = ± 1/16"
Angular = ± 1.0 °

| | | | | | |
|---|---------------------|---|------------------------------------|--|--|
| Tektite Manufacturing Inc. 24157 Hwy 3, Box 639, Winkler MB, R6W 4A8, Canada | | | | | |
| Req'd: | CNC: | Description: Operator Manual Switch Plate Left | | | |
| Drawn By: Daryl Furkalo | Date: 2009-03-09 | Units: Imp. | File Name: LEFT-SWITCHPLATE-ASM | | |
| Checked By: | Date: | Size: B | | | |

| Index | Service Part # | File Name | Description | Qty |
|-------|----------------|----------------|--------------------------------------|-----|
| 1 | A00-0007 | FAN-SWITCH | 4-Position Fan Switch | 1 |
| 2 | A00-0054 | TEKT-0018 | Fan Speed Control Knob | 2 |
| 3 | A00-0055 | TEKT-0019 | Fir Tree Fastener | 4 |
| 4 | A00-0065 | TEKT-ASM-005 | On-Off Switch w/Lens | 3 |
| 5 | A00-0252 | TEKT-0117 | Water Valve Directly on Switch | 1 |
| 6 | A00-0253 | TEKT-0119 | Right Switchplate Decal, 2014 Update | 1 |
| 7 | A00-0282 | SCREW-3-16X3-4 | Screw, Self-Tap, 3/16" x 3/4" | 2 |
| 8 | A00-0283 | TEKT-0118 | Right Switchplate, 2014 Redesign | 1 |



SCALE 1.000

Notice of Confidentiality

This material is property of Tektite Manufacturing Inc and is not to be used by the recipient for any purpose other than the purpose for which it was transmitted. The material remains the property of Tektite and shall be returned upon request. The material may not be reproduced or disclosed to third parties without the written consent of Tektite.

Tolerances:
Unless otherwise specified
X.X = ± 1/16"
Angular = ± 1.0°

| | | | | | |
|---|---------------------|---|----------------------------|--|--|
| Tektite Manufacturing Inc. 24157 Hwy 3, Box 639, Winkler MB, R6W 4A8, Canada | | | | | |
| Req'd: | CNC: | Description: New Valve Design Switch Plate, 2014 | | | |
| Drawn By: Daryl Furkalo | Date: 2014-02-05 | Units: Imp. | File Name: TEKT-ASM-O3O | | |
| Checked By: | Date: | Size: B | | | |