



## Kioti CK35 Series ROPS Cab

\* Shown with optional equipment \*



### Kioti CK35 Series ROPS Cab

This ROPS cab is designed and built to fit the Kioti CK27, CK30 and CK35. Designed and Built by:

**Tektite Manufacturing Inc:**

427 Buffalo Street

P.O. Box 639

Winkler, MB

R6W 4A8

Canada

PH: 204-331-3463

Fax: 204-331-4159

[sales@tektite.ca](mailto:sales@tektite.ca)

[www.tektite.ca](http://www.tektite.ca)

**One year standard product warranty provided by Tektite.**



**DO NOT PROCEED FURTHER UNTIL YOU HAVE READ THE INFORMATION BELOW**

- 1) Always wear personal protective equipment**
- 2) A minimum of two people is necessary to safely install the cab**
- 3) This ROPS cab is heavy. A lift assist device such as an overhead hoist or high lift forklift is required.**
- 4) Ensure your work area is well ventilated. The installation requires the starting of the tractor which will produce dangerous carbon monoxide fumes.**
- 5) Read through the entire installation manual first.**
- 6) Follow the installation instructions in order.**
- 7) Reading the operators manual prior to using the ROPS cab.**





Tektite Manufacturing Incorporated thanks you for purchasing a Kioti CK35 series ROPS cab! Tektite has worked very hard to design and build this ROPS product and we hope that it provides you with many years of ROPS protection.

Tektite's ROPS products are designed to provide safe and dependable service during operation when they are properly maintained according to the instructions. Please read this installation manual carefully before installing and using this ROPS product.

The photos/illustrations provided in this manual may not provide all the detail needed, and are for reference only.

All directions provided are from the reference point of the tractor seat facing the steering wheel. All left and right references are from this view point.

For reference, please fill in the information below. This will assist your dealer in providing service for this ROPS. It is advisable that this information be provided to your insurance company as well in the event that the tractor is lost or damaged.

Vehicle Model: \_\_\_\_\_

ROPS Serial Number: \_\_\_\_\_

Date of Purchase: \_\_\_\_\_

Dealer Name: \_\_\_\_\_

**Parts List Standard Cab:**

<b>Description</b>	<b>Qty</b>
Structural Washer, ¼" thick	6
Chassis Isolator, Rubber, 5/8" (pre-installed)	6
Bolt, Hex, 5/8" x 3", Gr. 8, YD	2
Bolt, Hex, 5/8" x 5", Gr. 8, YD	4
Nut, Flange, 5/8", Gr. 8, YD	6
Under seat upholstery pieces	4
Bolt, Hex, 1/2" x 4 1/2", Gr. 8	2
Cab Lift Brackets	2
Left Under-hood Enclosure Shield	1
Right Under-hood Enclosure Shield	1
Front Pedal Shields	L&R
Front Cab Brackets	L&R
Rear Bracket Spacer Plates	2
Front Bracket Spacers (no loader only 3/8" & ¼")	2 sets
Bolt, Flange, ¼" x 1", YD	2
Nut, Panel, ¼"	2
Bolt, Flange, 5/16" x 3/4", YD	8
Nut, Flange, 5/16", YD	8
Screw, Self-tap, #12 x 1"	2
Screw, #8 x 3/4", MB	2
Wire Loop, 1/4", Yellow	2
180° O-rubber	3"
180° O-rubber	3 ½"
180° O-rubber	4 ½"
180° O-rubber	5"
180° O-rubber (2 3/8" pinch welt notched out)	5"
Zip Ties, Standard	4
Bolt, Hex, M14 x 40, UNF, Gr. 10.9, YD (if no loader only)	8

**Parts List Optional Components:**Heater Option

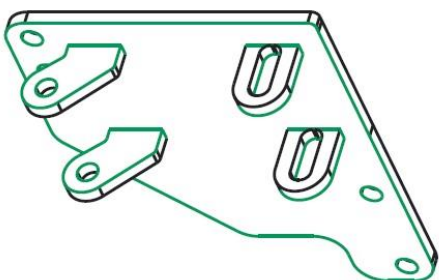
<b>Description</b>	<b>Qty</b>
1/2" ID hose, reducer kit w/bypass	1
HS-6 hose clamps	4



Air Conditioning Option

Description	Qty
Fan Spacer (5/16" laser cut)	1
Bolt, Flange, M6 x 30	4
Bolt, Flange, M8 x 20	4
Compressor, Rear Port	1
Bolt, Flange, 3/8" x 1 1/2", YD	4
Nut, Flange, Serrated, 3/8", YD	4
Compressor Bracket	1
Fuel Filter Bracket	1
Over-flow Bottle Bracket	1
V-Belt, A56	1
V-Belt, A31	1
Bolt, Flange, 5/16" x 3/4", YD	5
Nut, Flange, 5/16", YD	5
Zip Ties, Standard	8
Hood Gas Shock Tab (Kioti specific)	1

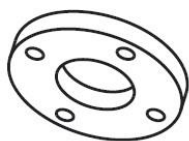
Air Conditioner Parts Only



Compressor  
Bracket



Over Flow  
Bottle Bracket



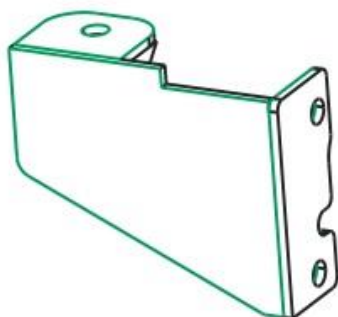
Fan  
Spacer



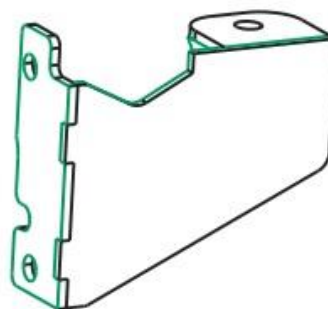
Fuel Filter  
Bracket



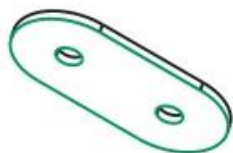
Hood Gas  
Shock Tab



Left Front  
Bracket



Right Front  
Bracket



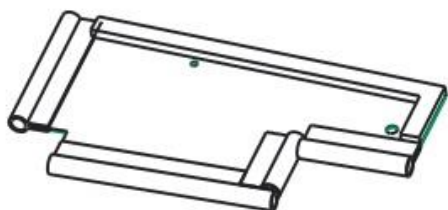
Rear  
Spacers (2)



Left Pedal  
Shield



Right Pedal  
Shield



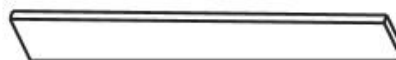
Under-hood  
Shield  
L & R



Seat Upholstery  
L & R



Seat  
Upholstery (1)



Seat  
Upholstery (1)



**Optional Air Conditioning Installation Instructions steps 1 to 34:**

1. Park tractor where over-head hoist or fork lift access is available. Raise loader to maximum height if equipped with loader to provide full access to engine. Disconnect tractor battery.
2. Completely drain engine coolant.
3. Remove the side engine cover panels, on left and right, of tractor hood.
4. Un-bolt hood gas shock, then hood, and remove entire hood.
5. Remove the four fasteners that fasten radiator mount to tractor.



6. Loosen alternator tensioner bracket, and slip drive belt off of alternator.
7. Un-bolt alternator and hang off side of tractor.
8. Un-bolt air intake on engine and remove breather hose. Take off air filter assembly and remove breather hose from plastic shroud.
9. Drain over-flow tank and remove bracket that attaches it to the engine block. Remove over-flow tank.
10. Un-bolt the fuel filter and let hang off side of tractor.
11. Disconnect and remove the upper radiator hose from the engine.





12. Disconnect and remove the lower radiator hose from the engine.
13. Remove the single wing-nut retaining the radiator screen, and then remove the screen.
14. Un-bolt and remove the plastic fan shroud along with the radiator from the tractor. Be careful, the radiator may leak more coolant. Bending out radiator retention tabs will be necessary.







15. Remove the support bracket that goes from top centre of hood to the top of thermostat housing. This bracket needs to be cut in order to remain installed on the tractor. Use the photo above as a guide for locating the cut, which will be just below the weld on the tab. Measure approximately 3 3/8" from inside of bend at top and cut at that location.

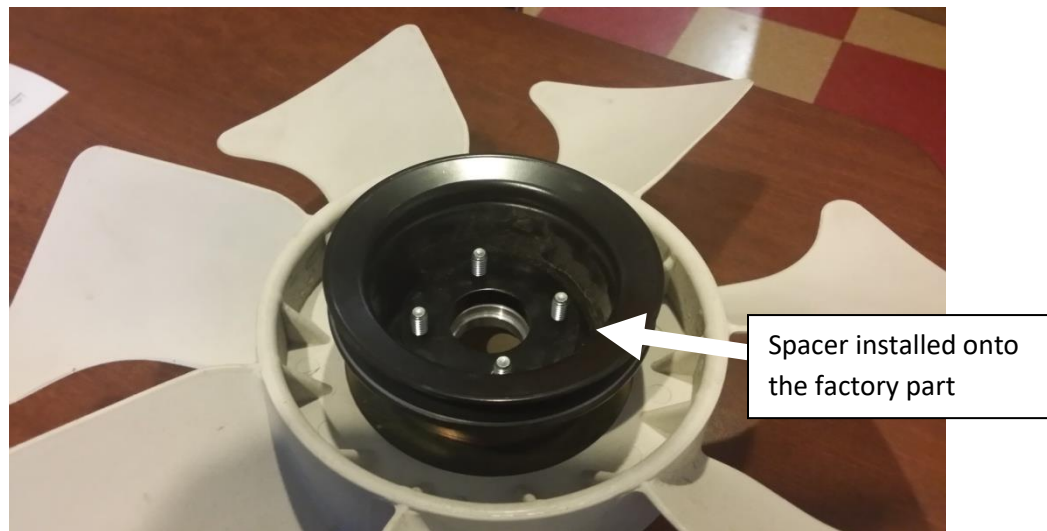
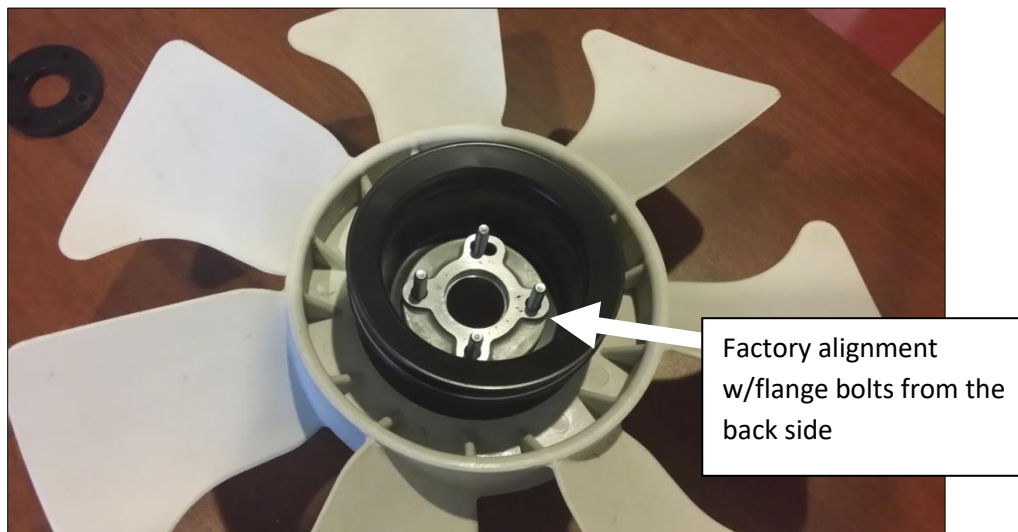


16. Take the main compressor bracket and position on top of the engine on the two flat spaces shown. Use the provided M8 x 20 flange bolts. Bolt into place on the left side first. Take the fuel filter mount bracket and slide between the compressor bracket and the engine mount so that it is below compressor bracket. The bottom dropped down flange should be towards the rear. Then take the over-flow tank bracket and install with the Z facing outwards on the right side over top of the compressor bracket. Fasten with the provided M8 x 20 flange bolts.



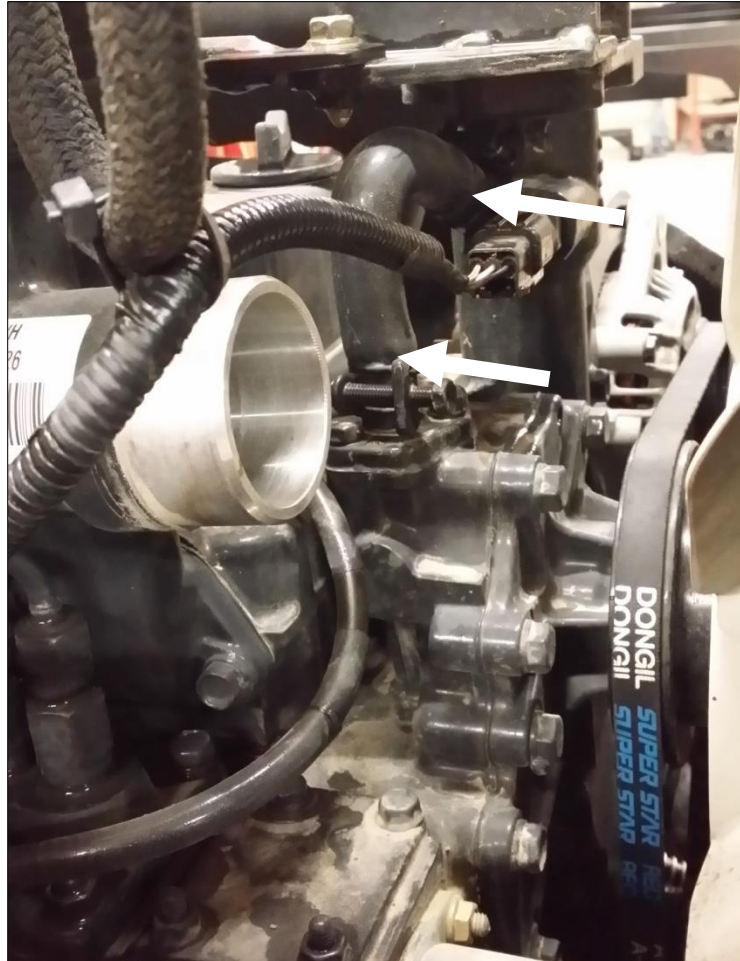


17. The fan pulley needs to move forward from the factory position. Remove the four fasteners that attach fan to pulley. Take the Tektite provided 5/16" fan spacer and position it above factory fan spacer. Re-attach fan with the provided M6 x 30 mm flange bolts.



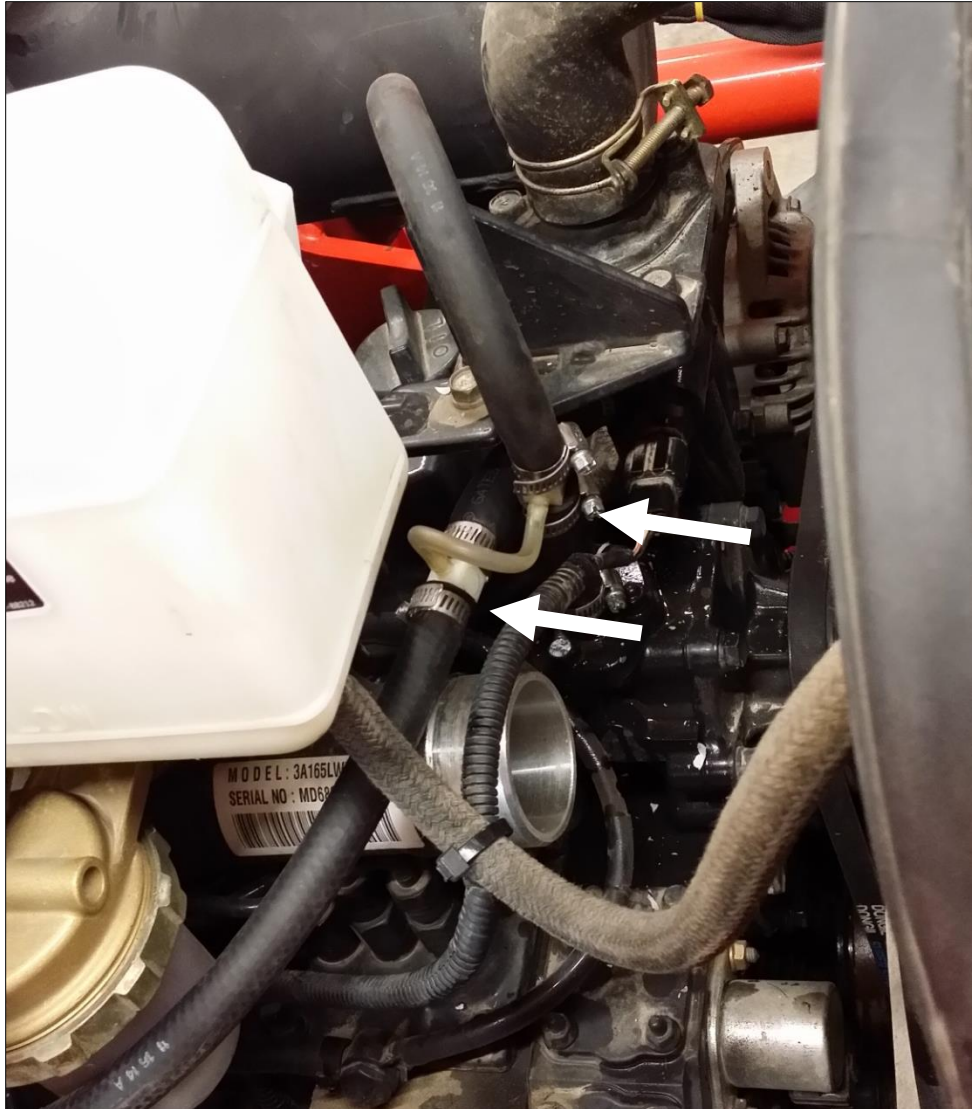
***Proceed with the following two steps in order to install the heater fittings now, while maximum engine access is provided.***

18. Remove the bypass hose on the engine shown in the photo on the next page.



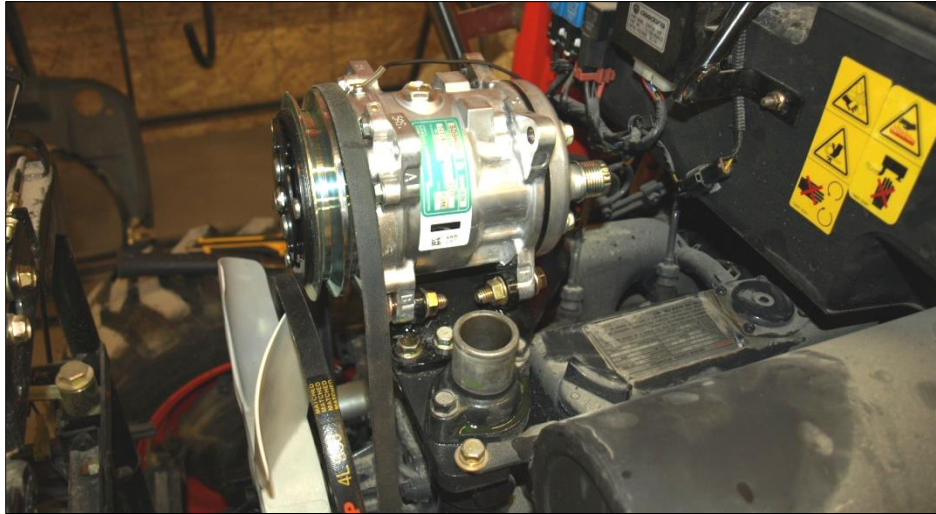
19. Take the provided 1/2" ID hose bypass kit, and install 1/2" ID hose onto both ends of the original bypass on the engine.





The remainder of heater installation will be done after the cab is installed.

20. Take the compressor along with two sets of 3/8" x 1 1/2" flange bolts and nuts, and bolt the compressor to the compressor mounting bracket ears on the left side of the bracket. Loosely attach only.



21. Use a second set of 3/8" x 1 1/2" flange bolts and nuts and loosely attach the compressor on the right side of the bracket to the compressor ears.

22. Re-attach alternator onto engine.

23. Slip the longer new v-belt around the alternator, engine drive pulley, and **REAR** groove of the compressor. Do **NOT** tighten belt yet.

24. Slip the short belt onto the fan pulley and front compressor pulley. Apply tension to this belt FIRST and tighten ALL compressor bolts.

25. Tension main drive belt with the alternator tensioner and firmly fasten alternator into place.



26. Take the plastic radiator shroud and position into place as far back as possible. Take the radiator and slip it into place in front of the fan. **Please note, space is very tight**, and caution must be used when sliding the radiator back into place. The fan may get damaged!



27. Re-fasten the radiator mount to the tractor with the four factory bolts once the fan shroud is back into place.

28. Re-install the large air intake hose through the plastic radiator shroud and attach onto engine. Re-install the air intake filter assembly onto tractor and re-connect the air hose to the filter assembly.

29. Re-install the fuel filter onto the mount bracket provided underneath the compressor bracket installed earlier. Use the provided 5/16" x 3/4" flange bolts and flange nuts.

30. Take the provided 5/16" x 3/4" flange bolts and nuts and fasten over-flow tank to mounting bracket installed earlier.



31. Re-install the lower radiator hose onto the radiator with factory hardware.

32. Re-install the upper radiator hose onto the radiator with factory hardware.

33. Take the provided hood gas shock tab and the provided 5/16" x 3/4" flange bolt and nut and fasten to the front top ear of the compressor.





34. Take the gas shock and pin and attach to ear of the shock tab.

#### **Installation Instructions:**

1. Prior to cab install, some items on the tractor will need to be un-fastened and removed:

- Remove the upper hoop portion of the 2-post ROPS.
- If tractor is equipped with debris shields on the operator platform, remove them.
- Remove steps from operator foot platform, save hardware.
- If tractor is equipped with loader, un-fasten the quick-coupler hydraulics bracket from the loader sub-frame and let hang down. Hoses will need to be re-routed after the cab is installed.





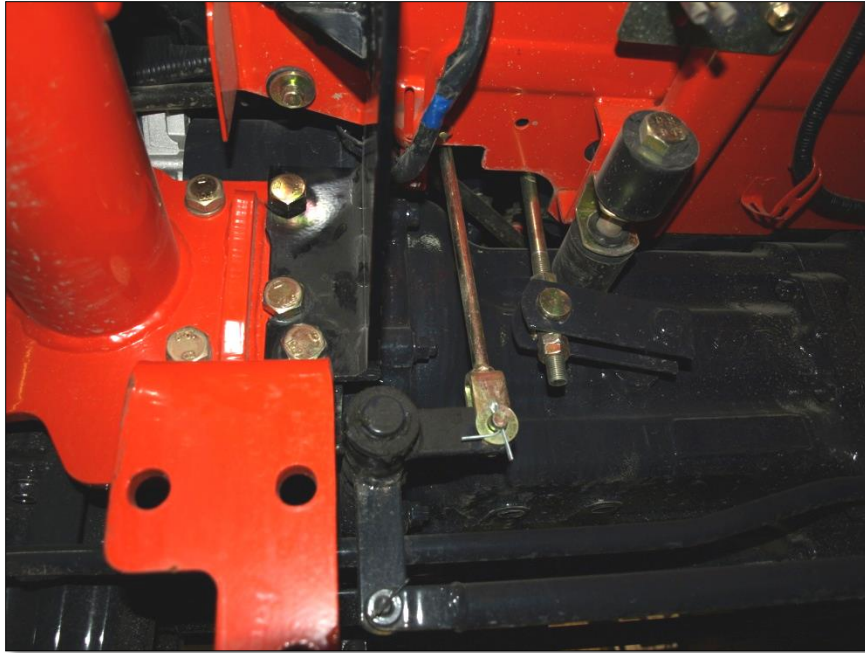
2. Remove the toolbox from behind the seat.
3. Take the four pieces of upholstery and position around the seat platform. Use an aerosol glue, 3M high strength 90 is recommended, and glue into place. See photo.



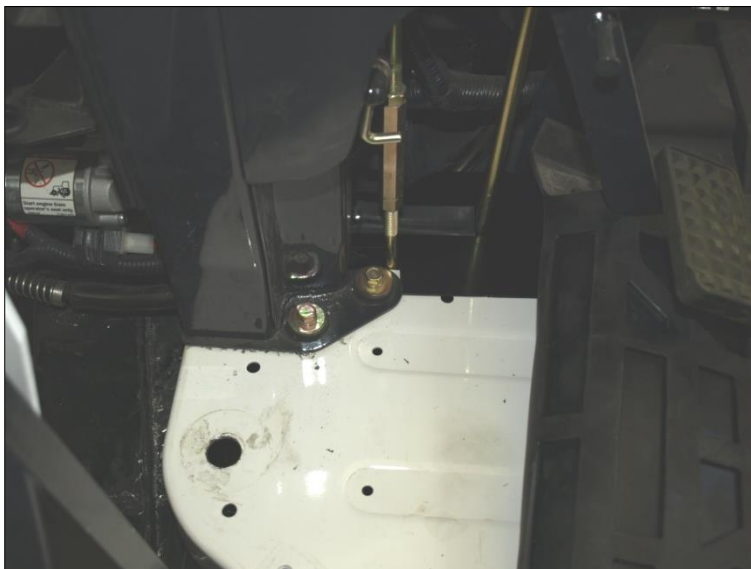
4. Remove the hydrostatic drive pedal. Take the 5" piece of 180° O-rubber and slide onto the right edge of sheet-metal in the pedal opening. Re-install the drive pedal. See photo.



5. Position the left front bracket on the bell housing. Note the four bolts that must be removed if the tractor is equipped with a front end loader. The bracket will tuck up tight against the operator platform with the mount plate forward. If no loader is present, use the supplied 5/8" spacers by using one 1/4" and one 3/8" spacer on each side. Bolt the left front bracket into place tightly.

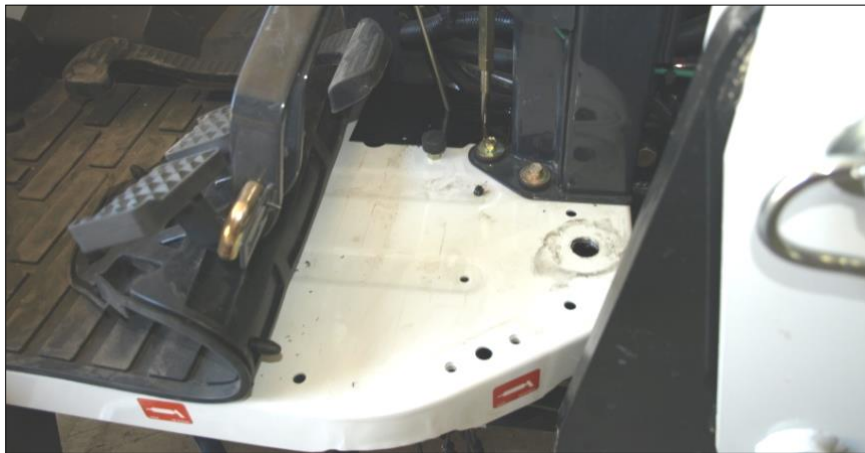
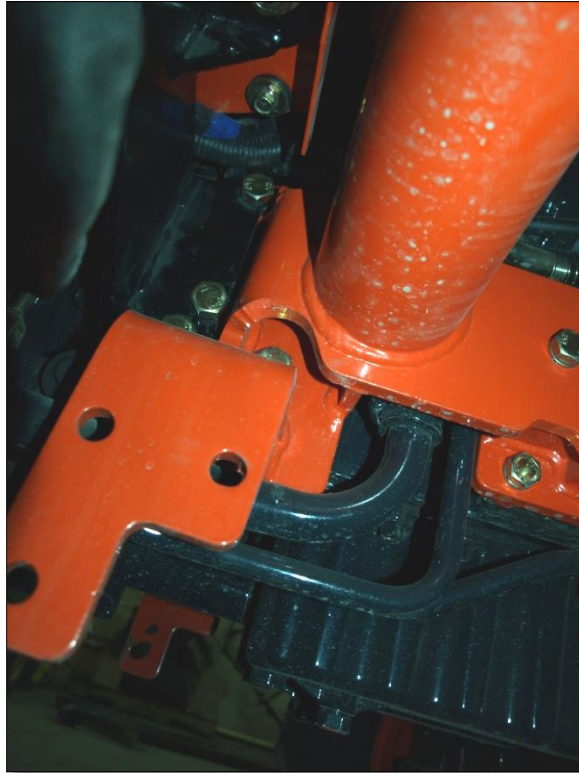


6. Mark and drill an 11/16" hole through the operator platform using the mounting bracket as the guide.

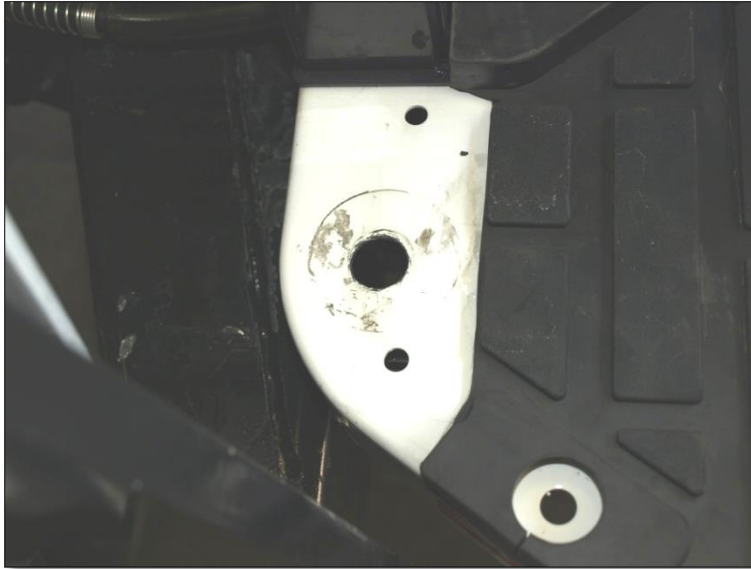


7. Repeat steps 5 & 6 for the right side.

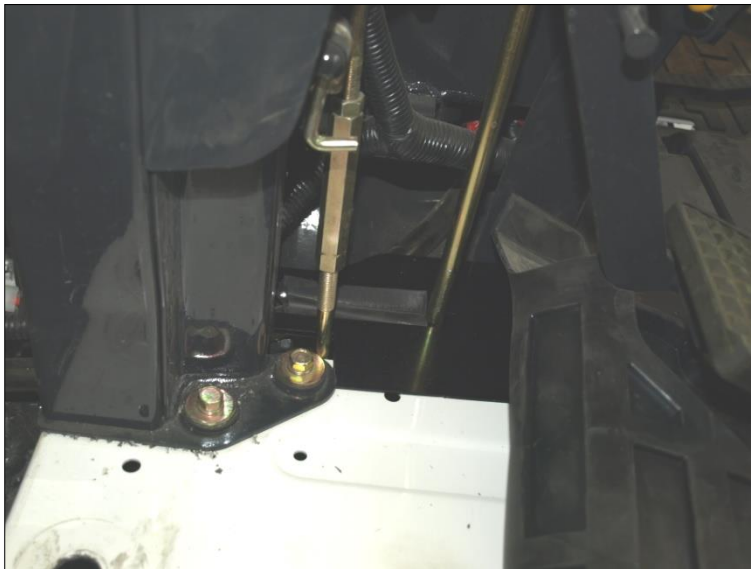




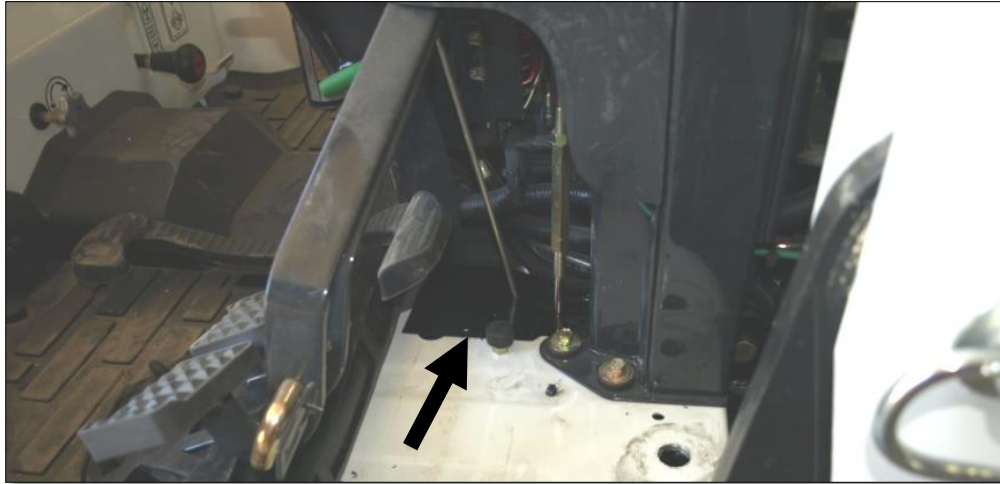
8. Notch out the front corner of the operator platform matting as shown in the photo below.



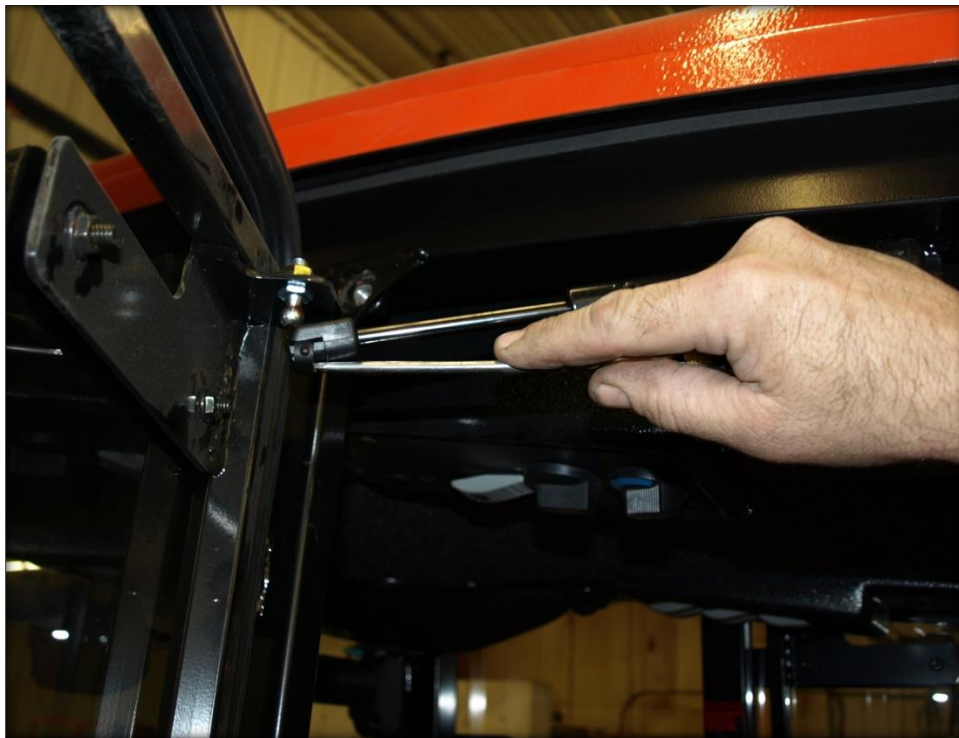
9. Take the 3 ½" piece of 180° o-rubber, and the left under-hood shield along with one #8 x ½" screw. Position the shield under the operator platform matting and slide in to close up the front gap. Use the provided screw and firmly fasten into place. See photo.



10. Take the right under hood shield and the other # 8 x ½" screw. Position the shield under the operator platform matting on the right side to close up the front gap. Use the provided screw and firmly fasten into place. See photo.



11. Return to the cab to install lift brackets next. To remove the gas shock on the left cab door, slide a flat screwdriver underneath the small clip on the end cap that must be pulled UP order to pop the shock off of the ball stud. **The shock will release very easily when this is accomplished.** Lift the door assembly straight up and off of the cab and put aside for now.



12. Lift cab doors off of pin hinges.

13. Take the provided cab lift bracket and one  $\frac{1}{2}$ "x 4  $\frac{1}{2}$ " hex bolt and bolt the lift bracket to the cab through the hole and weld-nut at the top rear corner of the door opening. Repeat for opposite side.





14. Use a lifting chain or lift strap and fasten the two lift brackets together. Be careful to not damage the roof in the process. Attach to an over head crane or forklift and prepare to lift the cab off of the shipping pallet. Un-bolt cab from the shipping pallet and lift the cab off of the pallet.

15. Lift the cab straight over the tractor. Slowly lower the cab down until the front is on the platform and the rear is on the fenders. NOTE that there are rear plates that go between the 2-post ROPS mount and the outside of the isolators for the two rear mounts.

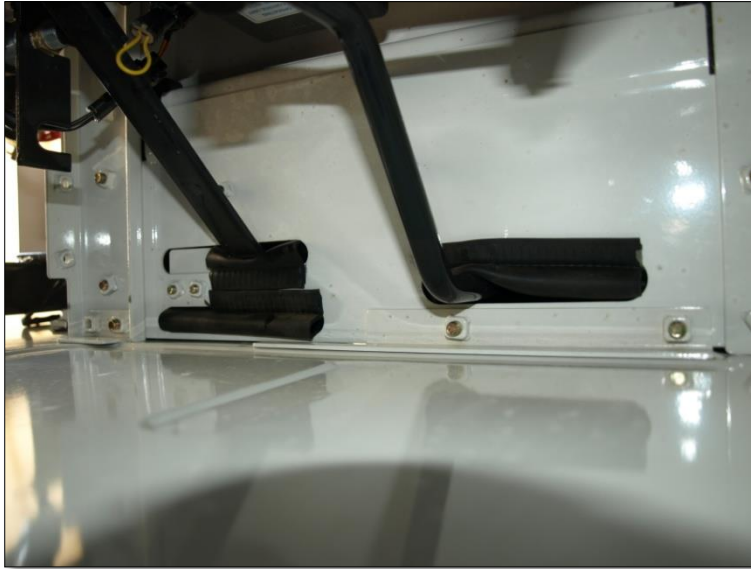


16. Use the 5/8" x 3" hex bolts, heavy 1/4" flat washer, flange nuts for the front two isolators through the platform and to the front brackets. Use the 5/8" x 5" hex bolts for the rear mounts with the plate mentioned in the previous step.

17. Tighten all ROPS mounting fasteners. The 5/8" isolator fasteners can be tightened to a torque of 200 ft-lbs.

18. Remove the cab lift brackets from the cab and store if you intend to remove cab in the future.

19. Take the three remaining pieces of O-rubber, 3", 4 1/2", and notched 5". These pieces are installed underneath the operator platform to close up the gaps through the levers on the left side which include the transmission range selector and PTO lever. See photo from under the platform below.



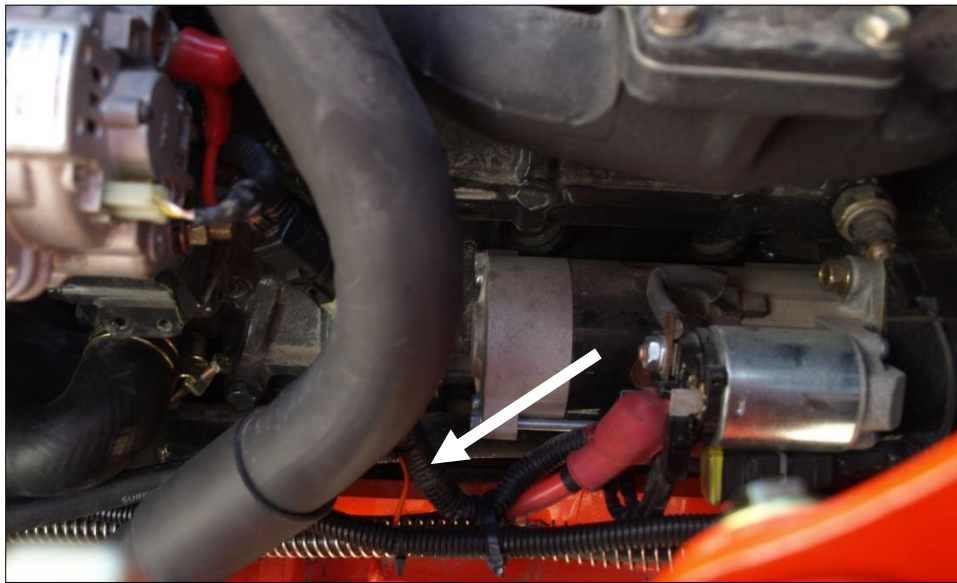
20. To ensure a better seal of all weather stripping and floor mat pieces, it is recommended that you use a black silicone seal to seal the cab parts to the tractor.

21. Route the electrical wires from the bottom of the left A-post into the hood compartment. Connect the 10GA black wire to the battery ground terminal using the provided 1/4" loop connector. Shorten wire if necessary, then solder connector to black wire. Connect the 10GA red wire to the positive battery terminal using the 1/4" loop connector provided. Shorten wire if necessary, then solder the connector to the red wire.





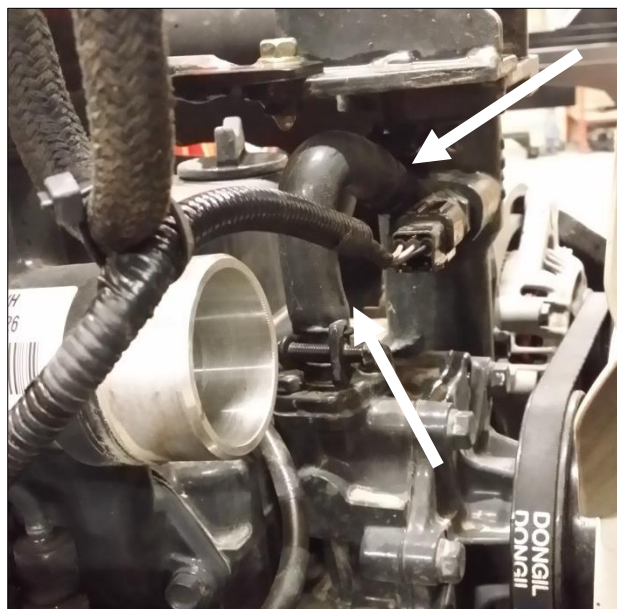
22. Connect the orange wire to the switched source on the harness going to the starter by soldering the wire directly in. See photo. Verify with test light before soldering!



If cab is equipped with the heater option, proceed with the following steps. Note, air conditioner installers have already installed the fittings, however, the heater hoses are located in different areas!

23. Drain the engine antifreeze.

24. Remove the bypass hose.





25. Take the provided 1/2" ID hose bypass kit, and install 1/2" ID hose onto both ends of the original bypass on the engine.

**26 (Heater only).** Locate the hoses at the front of the cab. Route the hose from the left A-post towards the bypass fittings. Ensure that the hose does not interfere with any moving parts. Cut the hose and then connect it to one side. Use zip ties to tidy up the hose. Use the provided HS-6 hose clamps to secure the hose to the fitting. Route the hose from the right A-post to the remaining fitting, ensuring that it does not interfere with any moving parts. Cut any excess length, and connect to the bypass fitting with the provided HS-6 hose clamps.

**26 (Air Conditioner only).** Locate the heater hoses located at the rear of the cab, on the left side. Route the hoses underneath the tractor and forward to the engine bay, ensure that it does not contact any moving or hot engine parts! Connect the one hose to the bypass fitting installed earlier. Use the provided HS-6 hose clamp to securely attach hose to the fitting. Route the other hose to the remaining bypass fitting, ensure that it does not contact any moving or hot engine parts. Use the provided HS-6 hose clamp to securely attach hose to the fitting. Cut and excess hose out as necessary. Use provided zip ties to secure hoses to tractor in a neat manner.







27. Make sure all fitting connections are tight and the hoses are properly secured to the machine. Re-fill the engine antifreeze. Go to the cab, and turn the heater control switch to the maximum heat side. Start the engine and turn the cab fan to the highest speed setting. Take the radiator cap off of the engine and place a funnel into the radiator. Fill the funnel with antifreeze. The engine will need to run for a few minutes and the thermostat open a few times in order for all air to be purged from the heater system. The air at the cab louvers should be very hot when that occurs. NOTE: ensure adequate fresh air ventilation in the work space you are in, carbon monoxide from the engine exhaust is deadly.

28. Take one self-tap screw, ¼" x 1" flange bolt and one of the lower front shield pieces. Position shield against the bell housing on the left side of the tractor and fasten the flange bolt to the panel nut in the lower hood shield. Use the self-tap screw to fasten the shield into the lower tube cross-member once a nice fit is achieved with the tractor.



29. Repeat for the right side.



30. Take the 5/16" x 3/4" flange bolts and nuts provided, and both of the steps removed earlier. Fasten each step to the step mounts provided underneath the lower door cross-members on both sides of the cab frame.



Air Conditioner Installation Continued.

31. Route the A/C hoses from the right rear corner of the cab, under the tractor and forward to the engine bay. Keep the hoses away from any hot or moving parts. Use provided zip ties to secure the hoses to the tractor.





32. Take the larger # 10 hose and route to the compressor. Ensure that the o-ring is seated into the fitting and connect the hose onto the compressor.

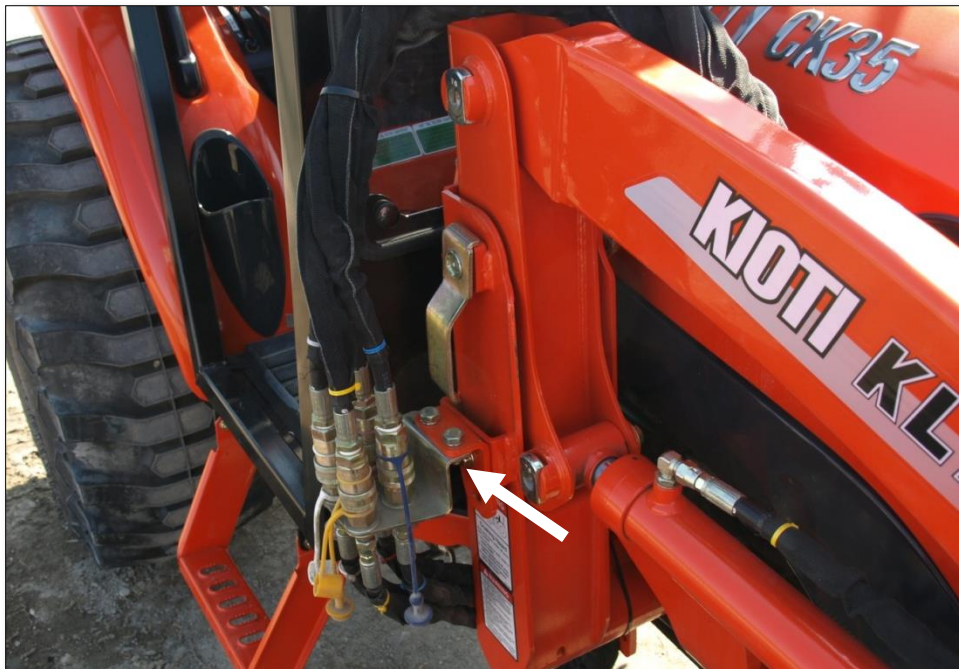
33. Take the remaining # 8 hose and route to the compressor. Ensure that the o-ring is seated into the fitting and connect the hose on the compressor.

34. Take the white compressor wire that is with the hoses and connect to the bullet connector on the compressor. Use the female bullet provided in the kit.

**The air conditioning system is now ready for evacuation and pressurization. A licensed air conditioner installer must perform the install. The air conditioning system is designed to use 2 lbs of R134a coolant. The compressor is pre-filled with oil.**

35. Re-install the tractor hood and connect gas shock.

36. For tractors equipped with loaders, the hoses need to be re-routed as shown below. Fasten hose retainer bracket to loader as shown.





## Kioti CK35 Series Cab

\* CK35 model Shown with optional equipment \*



### **Kioti CK35 Series Cab**

**This ROPS cab is designed and built to fit the Kioti C27 and CK35.**

**Designed and Built by:**

**Tektite Manufacturing Inc:**

**427 Buffalo Street**

**P.O. Box 639**

**Winkler, MB**

**R6W 4A8**

**Canada**

**PH: 204-331-3463**

**Fax: 204-331-4159**

**sales@tektite.ca**

**www.tektite.ca**

**One year standard product warranty provided by Tektite.**



Tektite Manufacturing Incorporated thanks you for purchasing a Kioti CK35 series ROPS cab! Tektite has worked very hard to design and build this ROPS product and we hope that it provides you with many years of ROPS protection.

Tektite's ROPS products are designed to provide safe and dependable service during operation when they are properly maintained according to the instructions. Please read this operator manual carefully before using this ROPS product.

The photos/illustrations provided in this manual may not provide all the detail needed, and are for reference only.

All directions provided are from the reference point of the tractor seat facing the steering wheel. All left and right references are from this view point.

For reference, please fill in the information below. This will assist your dealer in providing service for this ROPS. It is advisable that this information be provided to your insurance company as well in the event that the tractor is lost or damaged.

Vehicle Model: \_\_\_\_\_

ROPS Serial Number: \_\_\_\_\_

Date of Purchase: \_\_\_\_\_

Dealer Name: \_\_\_\_\_



## Tektite Limited Warranty

Tektite Manufacturing Inc. ("Tektite") warrants to the original purchaser (the "Claimant"), that Tektite products will be free from defective materials or workmanship, under normal use and service, for a period of (1) full year from the original invoice date. Tektite's liability under this Limited Warranty is limited to the repair or (at the discretion of Tektite) the replacement of those components of its products, which were manufactured by Tektite that are defective in materials or workmanship. Tektite shall have no liability under this Limited Warranty unless Tektite is notified of the defect during the stated Warranty Period.

Limitations and Exclusions: Tektite has no responsibility to a Claimant under this Limited Warranty or on any other basis for any of the following:

- a) defects caused, in whole or in part, by accident or misuse, negligence or failure to maintain the product or component;
- b) products or components sold to a customer on an "as is" basis;
- c) wiper blades, light bulbs, fuses, clear vinyl or other consumables;
- d) glass where the point of failure has not been preserved intact and delivered to Tektite for analysis of the cause of the failure;
- e) products or components which have been modified after shipping from Tektite to its customer;
- f) transportation charges for returned, repaired or replacement items;
- g) defects that are subject of a Tektite initiated recall where the Claimant fails to comply with the terms of the recall notice that comes to the attention of the Claimant;
- h) components of Tektite products that are manufactured by third parties (Tektite's only obligation in relation to such components shall be to accord to the Claimant the benefit of any transferable warranty accorded to Tektite by third party manufacturer);
- i) defects in workmanship or materials in products or components that are repaired or replaced by Tektite unless Tektite is notified of the new defect within the Warranty Period that applied to the original product or component that has been repaired or replaced;
- j) defects that result, in whole or in part, from inadequate engineering or specifications provided to Tektite by its customer;
- k) any actual or alleged deficiency in technical or engineering services or advice provided by Tektite to its customer whether provided for valuable consideration or otherwise;
- l) consequential damages, or any other damages whether foreseeable or not, resulting from the defect or any delay in remedying the defect;
- m) any breach or alleged breach of any implied warranty of merchantability or fitness for particular purpose of use;
- n) defects or part failure due to misuse or failure to follow recommended cab installation procedures; and
- o) travel expenses, including mileage.

This Limited Warranty expresses the entire obligation of Tektite, its officers, directors, agents and employees, to its customer or any Claimant in respect of any defect in workmanship, or materials of any product or component sold or manufactured by Tektite whether on grounds of breach of contract, negligence or other tortious liability, breach of express or implied warranty or other basis in law of any jurisdiction.

Acceptance by a customer of delivery of products of Tektite constitutes acceptance of this Limited Warranty in lieu of all other warranties express or implied including without limitation all implied warranties of merchantability or fitness for particular purpose or use and constitutes acceptance by customer of the exclusions and limitations of the liability of Tektite set out above. Once received, the cab should have ALL exterior cardboard, Styrofoam wrapping removed for immediate inspection of product to ensure that no damages have occurred during transportation. Outer coverings should stay off the cab and the cab be stored indoors in a controlled environment. The warranty card must be completed and returned to Tektite.

---

Warranty claims should be reported to [parts@tektite.ca](mailto:parts@tektite.ca). A warranty claim form and instructions will be provided at this time. Warranty work not pre-authorized by Tektite may not be covered by this warranty agreement. Labor rate and time allowances are fixed by Tektite. Approved warranty claims will be issued in the form of credits applied to customer account.



## Safety Precautions

### *Safety First*

Read these instructions carefully. It is essential that you read the instructions and safety regulations before you attempt to assemble or use the features that are on this cab/ROPS.

**Danger:** Indicates an immediate hazardous situation which, if not avoided, will result in death or serious injury.

**Warning:** Indicates a potentially hazardous situation which, if not avoided, may result in death or serious injury.

**Caution:** Indicates a potentially hazardous situation which, if not avoided, may result in minor or moderate injury.

**Important:** Indicates that cab or property damage may result if instructions are not carefully followed.

**NOTE:** All products are designed to give safe, dependable service if they are operated and maintained according to instructions. It is the owner's responsibility to be certain anyone operating this product reads this manual, and all other applicable manuals, to become familiar with this cab and all safety precautions. Failure to do so could result in serious personal injury or cab damage. If you have any questions, consult your dealer. Read and understand this manual before operation.

**NOTE:** A safe operator is the best assurance against accidents. All operators, no matter how experienced they may be, should read this operator manual and all other related manuals before attempting to operate features in this cab/ROPS and operate the base tractor. Please read the following section and pay particular attention to all safety recommendations contained in this manual and those labelled on the cab and on the tractor.



## **General Safety**

1. Never let an unqualified or untrained driver operate the tractor.
2. Keep a fire extinguisher, with ABC rating securely fastened in the ROPS. Maintain it and be familiar with its use.
3. Do not carry passengers.
4. Never operate the tractor in a closed building for a prolonged period. Ensure adequate ventilation is present, as engine exhaust fumes are poisonous and can kill.
5. Always keep sleeves, jackets or other loose clothing relatively tight and belted. Loose clothing may catch on moving parts and result in severe personal injury or death.
6. Provide a first-aid kit, securely attached inside of the ROPS for use in case of accident.
7. Never jump from the tractor. There is a danger of tripping or falling on protruding parts.
8. Use steps and hand holds when mounting and dismounting the tractor, or for servicing components too high to reach from the ground.
9. When seated in the ROPS, fasten seat belt before starting the engine. A proper seat belt must be worn at all times when using a ROPS.
10. Safety devices and shields are intended to protect operators from injury or death. Under no circumstances should they be modified, disabled or removed.

## **Operating Safety**

1. Always operate the tractor controls while sitting in the operator's seat.
2. Lock seat in position and buckle seat belt before operating the tractor.
3. Avoid abrupt sharp turns at high speeds.
4. On sloped terrain, do not make sharp turns as machine stability could be compromised.
5. Operate the tractor smoothly, avoid abrupt starts and stops.
6. Keep all shields in place when operating the tractor.
7. Do not operate the tractor when you are tired, sick, or impaired.
8. Never operate the tractor in confined areas; visibility next to the tractor is reduced. Injury to bystanders or damage to the ROPS or equipment may result.

## **Safety**

Carefully review the procedures given in this manual and the tractor operator's manual with all operators annually. It is important that all operators become familiar with, and follow safety precautions. Operating instructions must be given to everyone using the tractor before operation and at least once yearly thereafter in compliance with OSHA Regulations 1928.57 (United States).





### **Safe Operation on Rough Terrain**

1. Drive the tractor slowly on hillsides and curves to eliminate the danger of tipping. Avoid slopes which are too steep for safe operation. Avoid sharp uphill turns.
2. Always drive slowly enough over rough ground or obstructions. Drive at speeds slow enough to ensure your safety.
3. When driving out of a ditch, gully, or up a steep hillside, engage the clutch slowly. Avoid sharp uphill turns.
4. When descending steep grades, select a sufficiently low gear to maintain control with minimum use of braking.
5. Use caution when driving near the edge of a ditch or gully. It may cave in, causing the tractor to roll over.
6. Be alert when operating near trees, slopes and around obstructions. Tree branches can cause damage to ROPS components.

### **Maintenance Safety**

1. Remove mud, crop residue, chains, and tools from steps and operator's platform. They may interfere with pedal operation or entry/exit from tractor.
2. When servicing components are too high to reach from the ground use steps and handholds. Do not use fenders or shields that are not designed as steps.

### **Safe Highway Operation**

1. Before operating the tractor on, or near, public roadways check with your local authorities for any local regulations that will affect you.
2. Equip towed implements with slow moving vehicle (SMV) signs when traveling on public roads.
3. Install additional lights on implement rear to safeguard against rear end collisions.
4. Use hazard warning flashers as required by law when transporting or driving on public roads. If the tractor had warning flashers removed when mounting the ROPS, they must be replaced prior to operation on public roads.
5. Keep to the right, yielding right-of-way traffic, especially if pulling implements. Pull off the road and stop to allow motorists to pass. Drive on the road shoulder, if permitted by law.
6. Use extreme caution when pulling heavy loads at road speeds. Avoid hard application of the tractor brakes at high speed.
7. Always drive slowly near curbs, approaches or ditches.
8. If equipped, ensure headlights are aligned so they will not blind the operators of oncoming vehicles. If the tractor is not equipped with turn signals and law requires them, install them prior to operating on or near public roads.



9. Use your turn signals, checking for traffic well in advance of turning. If the tractor is not equipped with turn signals and law requires them, install them prior to operating on or near public roads.

### **Safety Decals**

1. Keep decals clean. Remove dirt with a wet clean cloth when necessary.
2. Replace safety decals if destroyed, missing, painted over or unreadable. If any safety decals are covered or obscured when the ROPS is mounted, it is recommended that you purchase replacement decals from the tractor manufacturer. Mount them in a readable location at, or near, their original location before operating the tractor.
3. New ROPS decals and tractor decals are available from your tractor dealer.

### **ROPS Safety**

1. Install the ROPS in accordance with Tektite mounting instructions. Failure to do so may affect the ROPS ability to withstand a roll over.
2. If the ROPS is subjected to alteration, structural damage or involved in an over turn accident, the entire structure must be replaced. Failure to do so may result in injury or death in the event of a roll over.
3. If the tractor is not equipped with seat belts, purchase approved seat belts from the tractor manufacturer or Tektite prior to operating the tractor.
4. Always fasten seat belts prior to operating the tractor.
5. Always operate the tractor from the operator's seat.
6. Remove mud, crop residue, chains and tools from steps and operator's platform. They may interfere with pedal operation or entry/exit from the tractor.
7. Remove all loose chains, tools, and equipment from the operator's platform. Failure to do so may cause injury or death in the event of a roll over.
8. Do not install the ROPS on a tractor model that the ROPS is not designated for (compatible tractor designations are printed on the ROPS serial number plate). The ROPS is designed specifically for individual models to ensure ROPS requirements will be met. Installing the ROPS on a non designated tractor may result in injury or death.

### **Emergency Exits**

This ROPS cab has 2 exits, which may be used in an emergency: left and right doors.

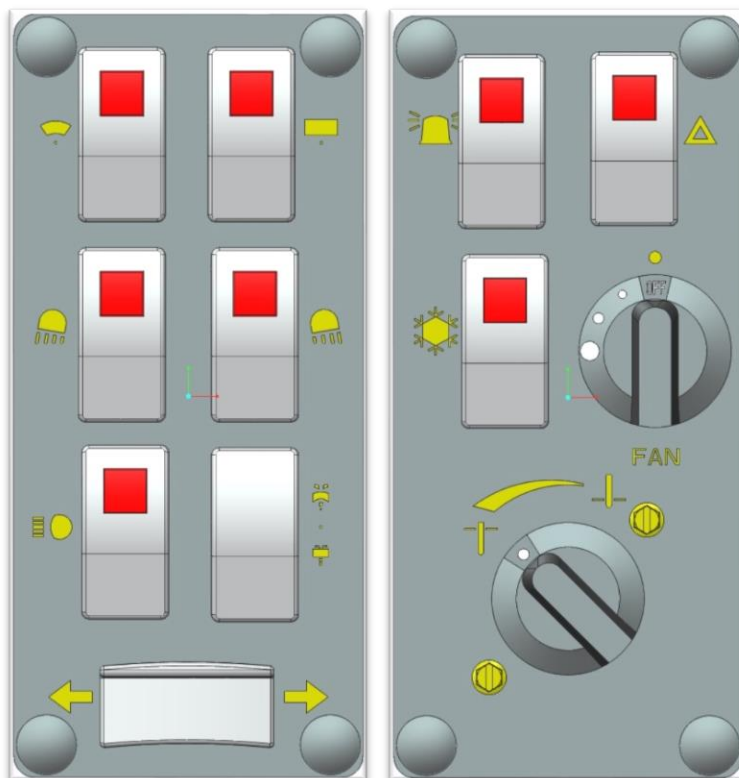


## Operating Instructions

### **Important**

The following section locates, identifies and briefly describes the functions of all cab controls. All operators should familiarize themselves with control location and function prior to operating the tractor. Failure to do so may result in unsafe operation of the tractor and possible injury or death to operators and bystanders.

There are two switch plates located in the headliner. The following switches are available and their functionality is described.



### **Left Switch Plate**

#### **1. Front Wiper Rocker Switch (standard)**

Low position: Off

High position: On

Note: indicator light activates when wiper is on.

#### **2. Rear Wiper Rocker Switch (optional)**

Low position: Off



High position: On

Note: indicator light activates when wiper is on.

### **3. Front Work Light Rocker Switch (optional)**

Low position: Off

High position: On

Note: indicator light activates when work lights are on.

### **4. Rear Work Light Rocker Switch (optional)**

Low position: Off

High position: On

Note: indicator light activates when work light is on.

### **5. Head Lights Rocker Switch (optional)**

Low position: Off

High position: On

Note: indicator light activates when head lights are on.

### **6. Front and Rear Washer Rocker Switch (optional)**

Low position: Momentary – On Rear Washer

Middle position: Off

High position: Momentary – On Front Washer

### **7. Turn Signal Rocker Switch (optional)**

Left position: On

Middle position: Off

Right position: On

## **Right Switch Plate**

### **1. Beacon Rocker Switch (standard)**

Low position: Off

High position: On

Note: indicator light activates when beacon is on.

### **2. Hazard Rocker Switch (optional)**

Low position: Off

High position: On

Note: indicator light activates when 4-way flashers are on.

### **3. Air Conditioner Rocker Switch (optional)**

Low position: Off

High position: On

Note: indicator light activates when air conditioner is on.





#### **4. Fan Rotary Switch (optional)**

Indicator mark above switch indicates whether fan is operational or not.

#### **5. Temperature Control Rotary Switch (optional)**

Indicator mark at lower left corner indicates current temperature setting. Rotate to increase heat output or to decrease heat output of heating system. When air conditioner is being used, it is recommended that the switch be at maximum cooling position.

### **Cab Circuit Protection**

The Tektite ROPS cab is wired to provide maximum protection against accidental battery rundown and circuit overload. A relay in the cab is ignition activated and prevents the operator from accidentally leaving fan motors, lights on after turning the tractor off and leaving for the day. A circuit breaker is provided to prevent the cab electrical components from drawing more power than they should be able to from a dead short. The cab electrical components are also fused individually, and the fuse block is located in the headliner, directly above the door opening on the left side. Locate the 3" snap cap, and with a small flat screw driver you can remove the cap to examine the fuses provided. A decal on the fuse block indicates which fuse is for which electrical option.

### **After your ROPS Cab has been installed:**

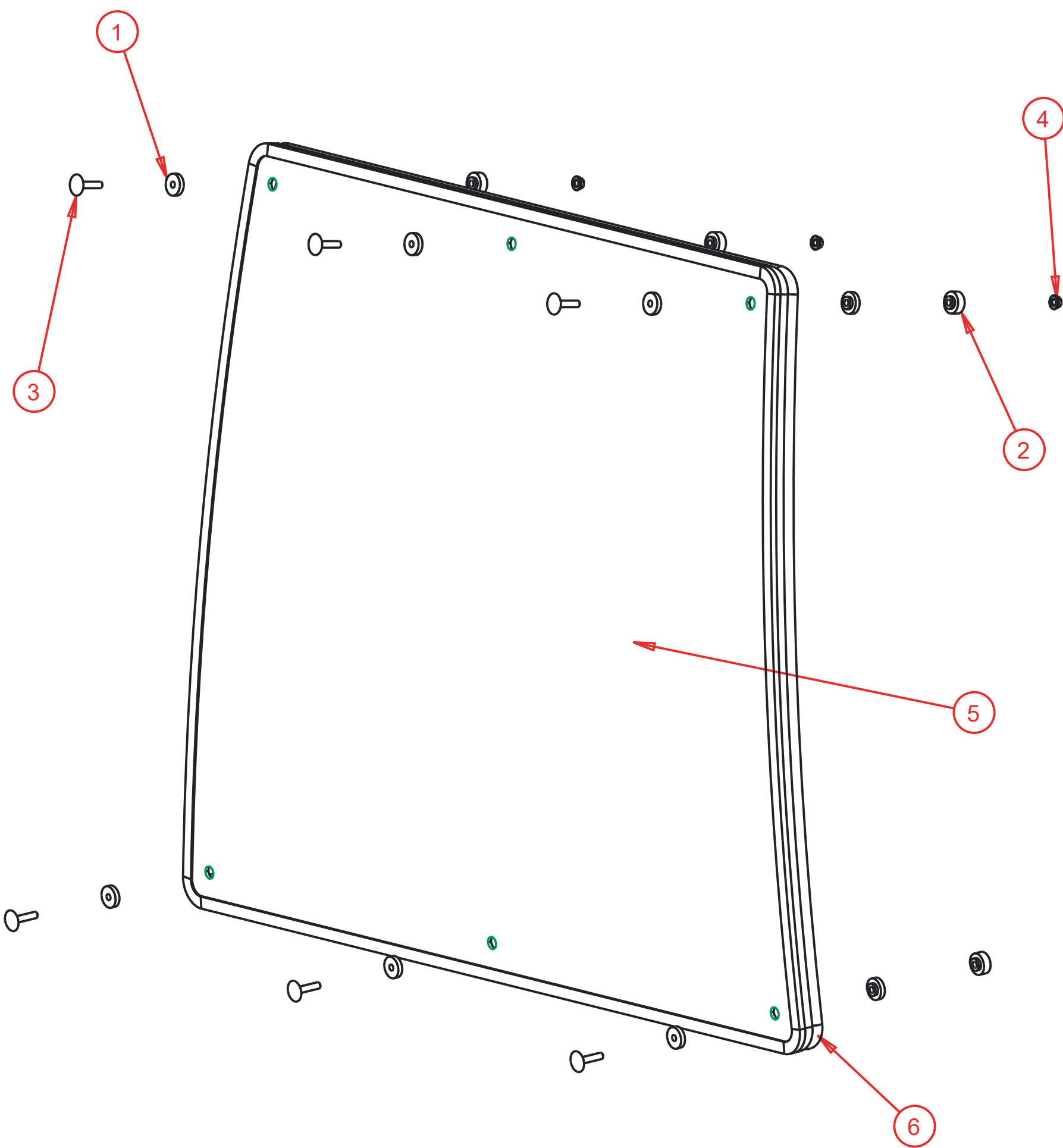
Before starting a tractor equipped with a Tektite ROPS cab:

1. Clear the operator platform of all tools. Tools left in or around the ROPS and tractor can cause operator interference which could lead to bodily injury and/or damage the machine.
2. Inspect the ROPS and tractor to ensure all bolts are tight and re-tighten if required.
3. Ensure that all pedals, levers, and controls have adequate clearance for normal operation.
4. Ensure that all electrical components of both the ROPS and tractor operate normally.
5. Ensure your door latches properly onto the striker pin. Immediately after installation, the ROPS frame may flex slightly from installation, and the door latch will need to be re-aligned for proper operation. Loosen the striker pin, striker mounting plate and door latch as necessary to get a proper alignment of the door striker.

### **Service Parts Breakdowns:**

Following are parts breakdowns for components that may require service parts replacement during the life of the ROPS. If you require replacement parts, please contact the dealer that you purchased the ROPS from and indicate which parts you require.

Index	Service Part #	File Name	Description	Qty
1	A00-0013	TEKT-0009	5MM Bushing	12
2	A00-0014	THICK-BUSHING	8MM Bushing	6
3	A00-0020	STEP-BOLT1-4X1-1-4	Step Bolt, 1/4" x 1 1/4", MB	6
4	A00-0021	FLANGE-NUT-1-4	Flange Nut, 1/4", YD	6
5	B01-0003	CCT225-022	Front Window Glass	1
6	B01-0011	CCT225-058	Windshield Seal	1



SCALE 0.220

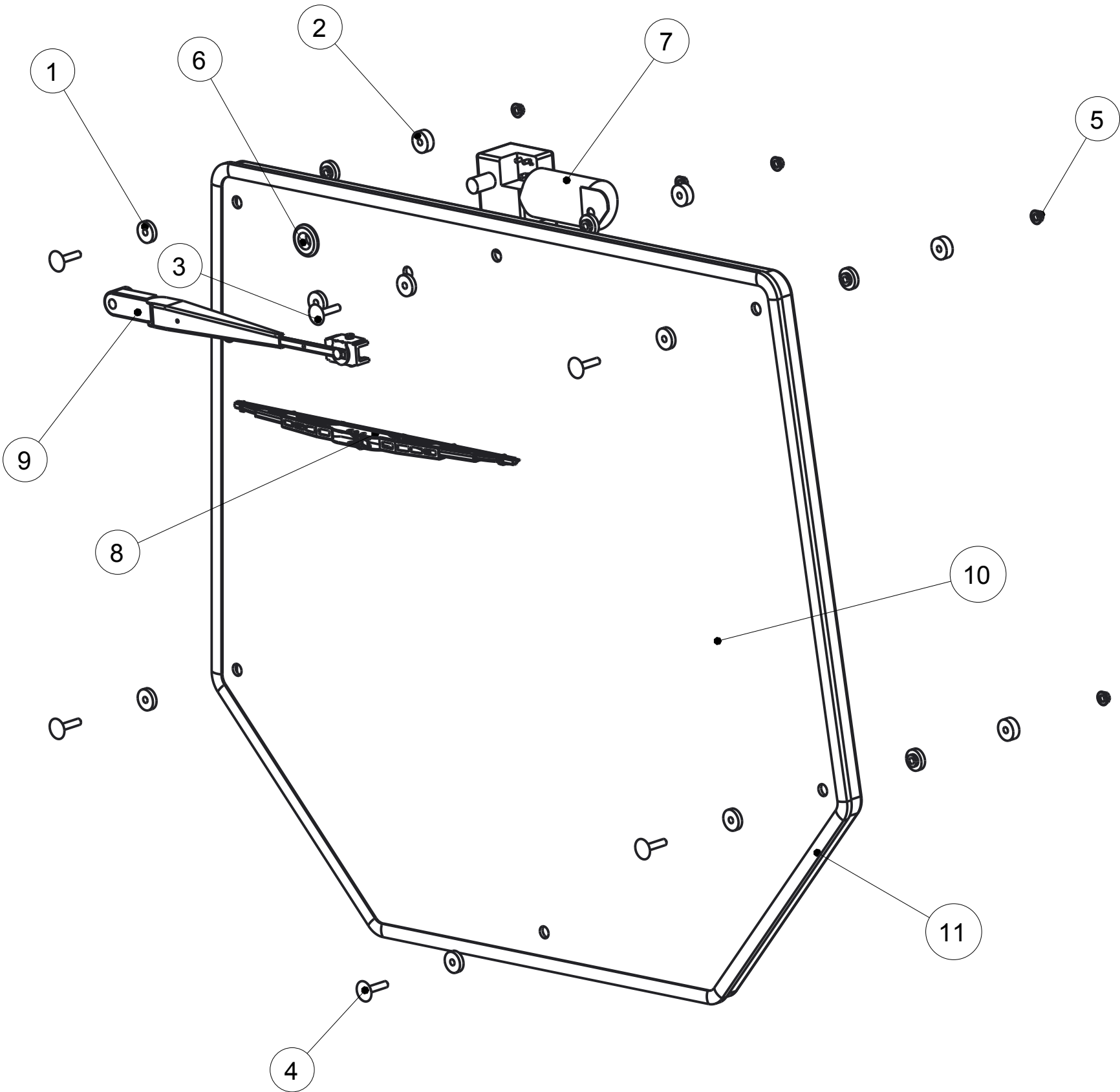
Notice of Confidentiality

This material is property of Tektite Manufacturing Inc and is not to be used by the recipient for any purpose other than the purpose for which it was transmitted. The material remains the property of Tektite and shall be returned upon request. The material may not be reproduced or disclosed to third parties without the written consent of Tektite.

**Tolerances:**  
Unless otherwise specified  
X.X =  $\pm 1/16"$   
Angular =  $\pm 1.0^\circ$

Tektite Manufacturing Inc. 24157 Hwy 3, Box 639, Winkler MB, R6W 4A8, Canada				
Req'd:	CNC:	Description: Windshield Assembly Breakdown		
Drawn By: Daryl Furkalo	Date: 2017-07-19	Units: Imp.	File Name: CCT225-ASM-O14	
Checked By:	Date:	Size: B		

Index	Service Part #	File Name	Description	Qty
1	A00-0013	TEKT-0009	5MM Bushing	14
2	A00-0014	THICK-BUSHING	8MM Bushing	6
3	A00-0019	STEP-BOLT1-4X1	Step Bolt, 1/4" x 1", MB	1
4	A00-0020	STEP-BOLT1-4X1-1-4	Step Bolt, 1/4" x 1 1/4", MB	6
5	A00-0021	FLANGE-NUT-1-4	Flange Nut, 1/4", YD	7
6	A00-0033	315-080	Rear Wiper Shaft Grommet	1
7	A00-0043	WWF-MOTOR	WWF Wiper Motor, 1" Shaft	1
8	A00-0109	302-1160_BLADE	Wiper Blade, 16"	1
9	A00-0263	TEKT-ASM-039	WWF, Adjustable Radial Arm, 13 1/2" Length	1
10	B01-0013	CCT225-060	Rear Window Glass V2	1
11	B01-0023	CCT225-079	Rear Window Weatherstripping	1



SCALE 0.200

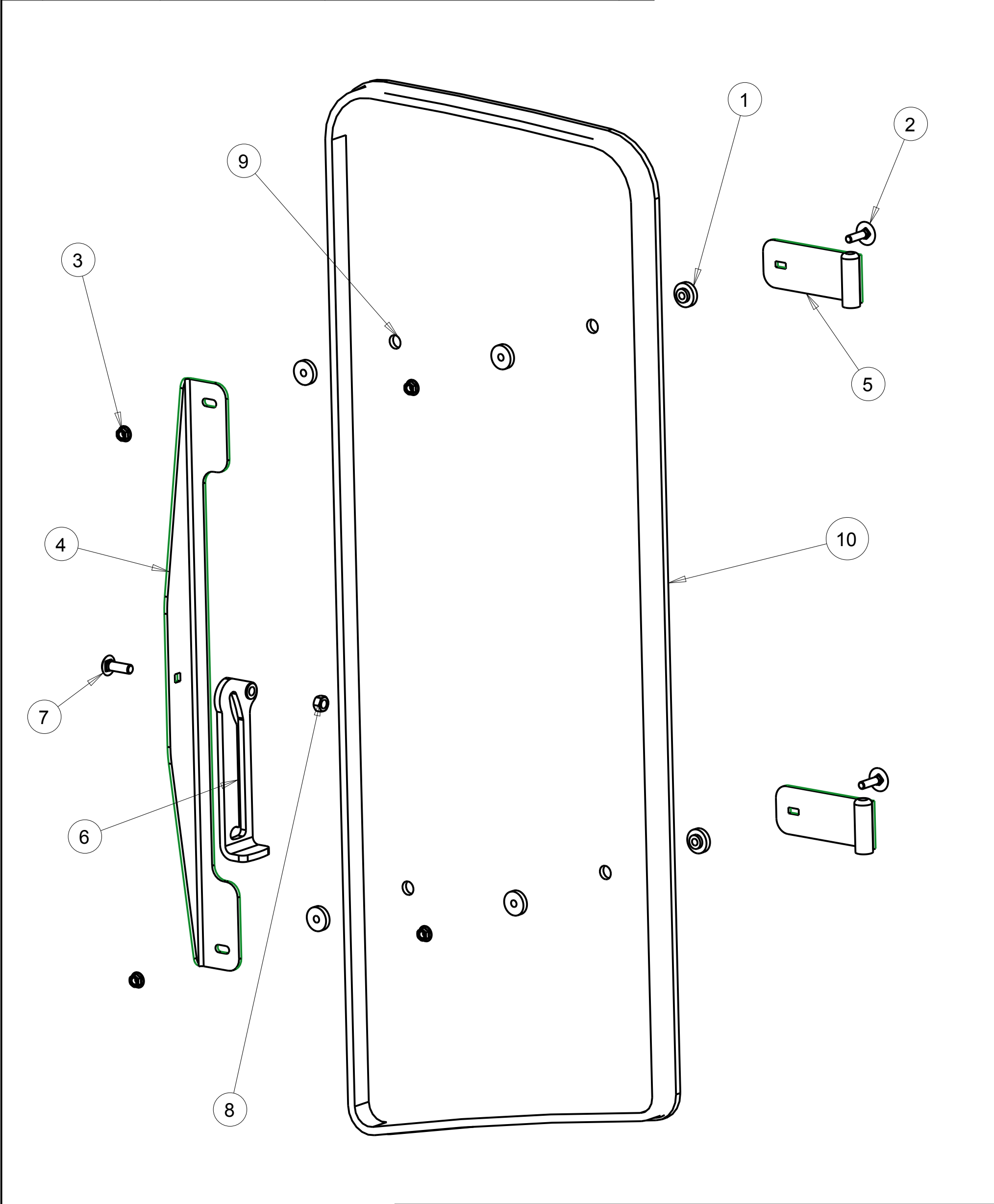
Notice of Confidentiality

This material is property of Tektite Manufacturing Inc and is not to be used by the recipient for any purpose other than the purpose for which it was transmitted. The material remains the property of Tektite and shall be returned upon request. The material may not be reproduced or disclosed to third parties without the written consent of Tektite.

Tolerances:  
Unless otherwise specified  
  
X.X = ± 1/16"  
Angular = ± 1.0°

Tektite Manufacturing Inc. 24157 Hwy 3, Box 639, Winkler MB, R6W 4A8, Canada				
Req'd:	CNC:	Description: Rear Window Assembly		
Drawn By: Daryl Furkalo	Date: 2014-01-02	Units: Imp.	File Name: CCT225-ASM-O13_OP	
Checked By:	Date:	Size: B		

Index	Service Part #	File Name	Description	Qty
1	A00-0013	TEKT-0009	5MM Bushing	8
2	A00-0019	STEP-BOLT1-4X1	Step Bolt, 1/4" x 1", MB	4
3	A00-0021	FLANGE-NUT-1-4	Flange Nut, 1/4", YD	4
4	A00-0045	TEKT-0004	Side Window Slider Bracket	1
5	A00-0046	TEKT-ASM-002R	Side Window Hinge Right	2
6	A00-0056	TEKT-0020	Side Window Latch, L60775	1
7	A00-0058	CARRIAGE_BOLT-5-16X1	Bolt, Carriage, 5/16"x 1", YD	1
8	A00-0164	LOCK-NUT-5-16	Nylon Lock Nut, 5/16", YD	1
9	B01-0004	CCT225-023	Side Window Glass	1
10	B01-0009	CCT225-056R	Side Window Weather Seal	1



SCALE 0.300

Notice of Confidentiality

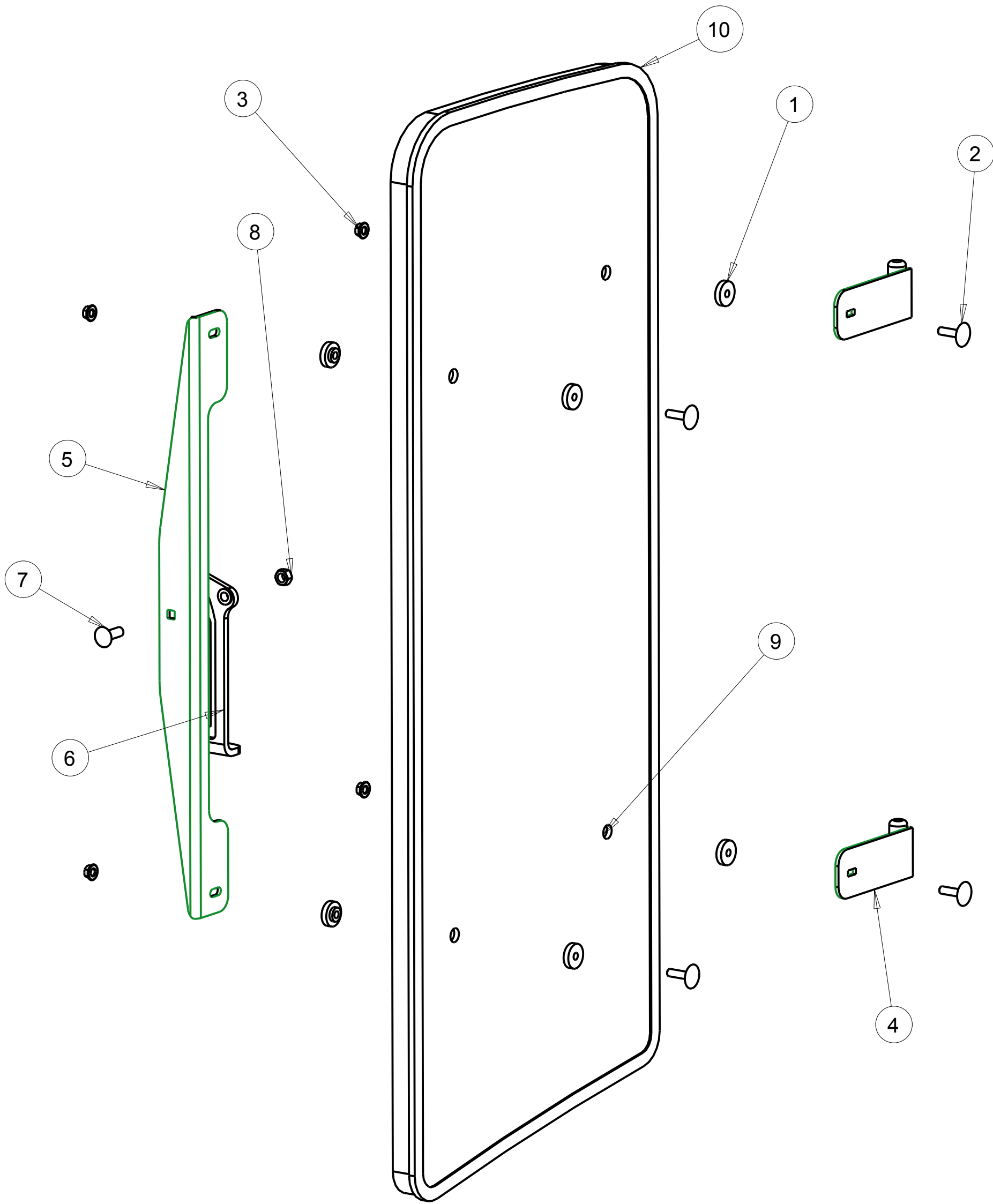
This material is property of Tektite Manufacturing Inc and is not to be used by the recipient for any purpose other than the purpose for which it was transmitted. The material remains the property of Tektite and shall be returned upon request. The material may not be reproduced or disclosed to third parties without the written consent of Tektite.

Tolerances:  
Unless otherwise specified  
X.X = ± 1/16"  
Angular = ± 1.0 °

Tektite Manufacturing Inc. 24157 Hwy 3, Box 639, Winkler MB, R6W 4A8, Canada				
Req'd:	CNC:	Description: Right Side Window Assembly		
Drawn By: Daryl Furkalo	Date: 2012-03-22	Units: Imp.	File Name: CCT225-ASM-O12_OP	
Checked By:	Date:	Size: B		



Index	Service Part #	File Name	Description	Qty
1	A00-0013	TEKT-0009	5MM Bushing	8
2	A00-0019	STEP-BOLT1-4X1	Step Bolt, 1/4" x 1", MB	4
3	A00-0021	FLANGE-NUT-1-4	Flange Nut, 1/4", YD	4
4	A00-0044	TEKT-ASM-002	Side Window Hinge Weldment	2
5	A00-0045	TEKT-0004	Side Window Slider Bracket	1
6	A00-0057	TEKT-0020MIR	Side Window Latch, L60776	1
7	A00-0058	CARRIAGE_BOLT-5-16X1	Bolt, Carriage, 5/16"x 1", YD	1
8	A00-0164	LOCK-NUT-5-16	Nylon Lock Nut, 5/16", YD	1
9	B01-0004	CCT225-023	Side Window Glass	1
10	B01-0009	CCT225-056	Side Window Weather Seal	1



SCALE 0.280

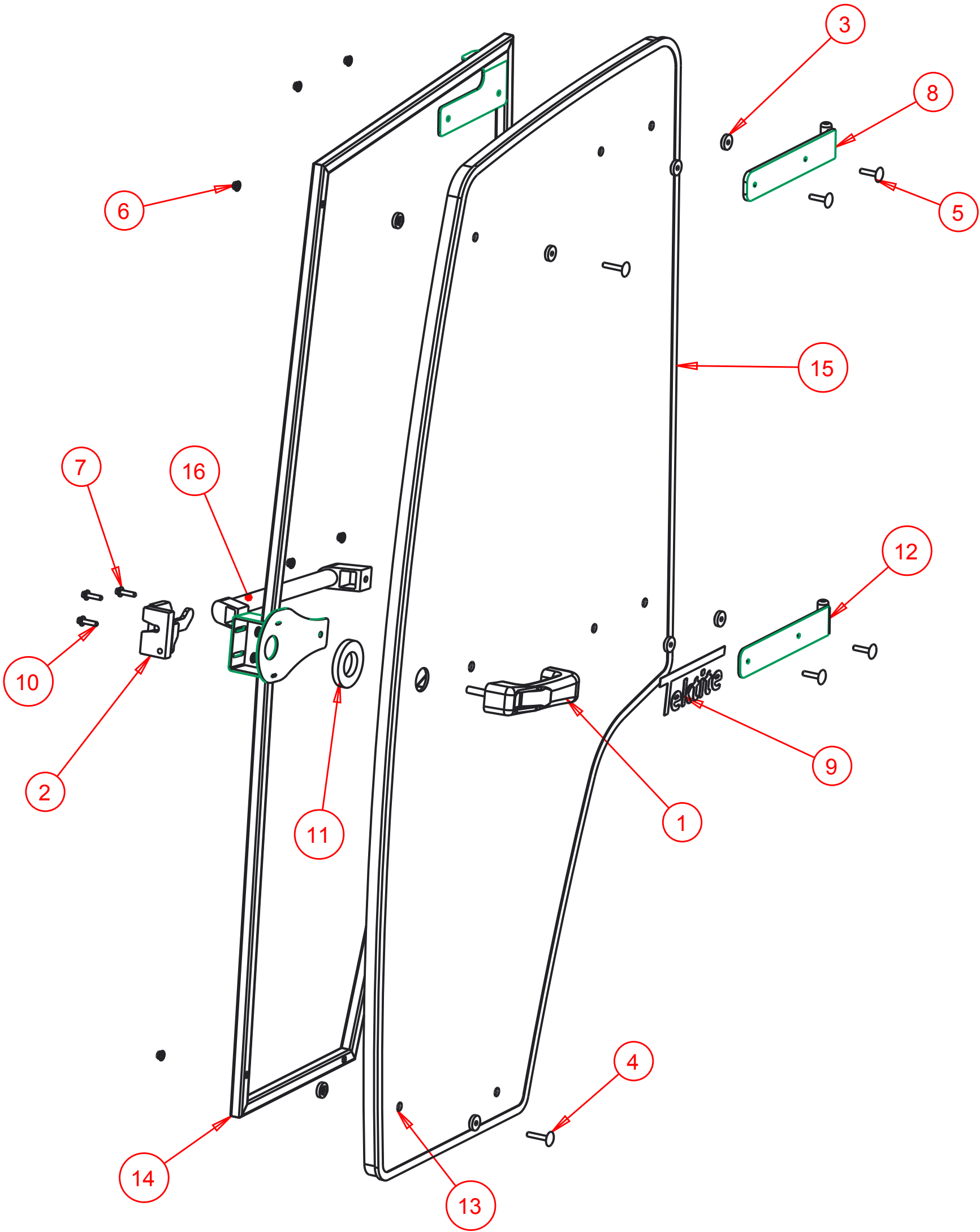
Notice of Confidentiality

This material is property of Tektite Manufacturing Inc and is not to be used by the recipient for any purpose other than the purpose for which it was transmitted. The material remains the property of Tektite and shall be returned upon request. The material may not be reproduced or disclosed to third parties without the written consent of Tektite.

Tolerances:  
Unless otherwise specified  
X.X = ± 1/16"  
Angular = ± 1.0 °

Tektite Manufacturing Inc. 24157 Hwy 3, Box 639, Winkler MB, R6W 4A8, Canada					
Req'd:	CNC:	Description: Left Side Window Assembly			
Drawn By: Daryl Furkalo	Date: 2012-03-22	Units: Imp.	File Name: CCT225-ASM-O11_OP		
Checked By:	Date:	Size: B			

Index	Service Part #	File Name	Description	Qty
1	A00-0001	DLP-HANDLE	Outside Push Button Handle	1
2	A00-0002	LEFT-LATCH	Suicide Door Left Latch	1
3	A00-0013	TEKT-0009	5MM Bushing	13
4	A00-0018	STEP-BOLT1-4X1-1-2	Step Bolt, 1/4" x 1 1/2", MB	2
5	A00-0020	STEP-BOLT1-4X1-1-4	Step Bolt, 1/4" x 1 1/4", MB	4
6	A00-0021	FLANGE-NUT-1-4	Flange Nut, 1/4", YD	8
7	A00-0022	FLANGE_BOLT_M6X25	Flange Bolt, M6x25, YD	1
8	A00-0039	TEKT-ASM-001	Left Door Hinge Weldment, Upper	1
9	A00-0041	TEKTITE-DECAL	Tektite Cab Decal - Solid White	1
10	A00-0118	FLANGE_BOLT_1-4X1	Flange Bolt, 1/4" x 1", YD	2
11	A00-0177	TEKT-0068	Handle Washer Spacer	1
12	A00-0228	TEKT-ASM-029	Left Door Hinge Weldment, Lower	1
13	B01-0005	CCT225-024	Door Glass	1
14	B01-0006	CCT225-ASM-006	Left Cab Door Weldment	1
15	B01-0008	CCT225-053	Door Weather Stripping	1
16	B01-0024	CCT225-080	Door Grab Handle, Bobcat CT235	1



SCALE 0.160

Notice of Confidentiality

This material is property of Tektite Manufacturing Inc and is not to be used by the recipient for any purpose other than the purpose for which it was transmitted. The material remains the property of Tektite and shall be returned upon request. The material may not be reproduced or disclosed to third parties without the written consent of Tektite.

Tolerances:  
Unless otherwise specified

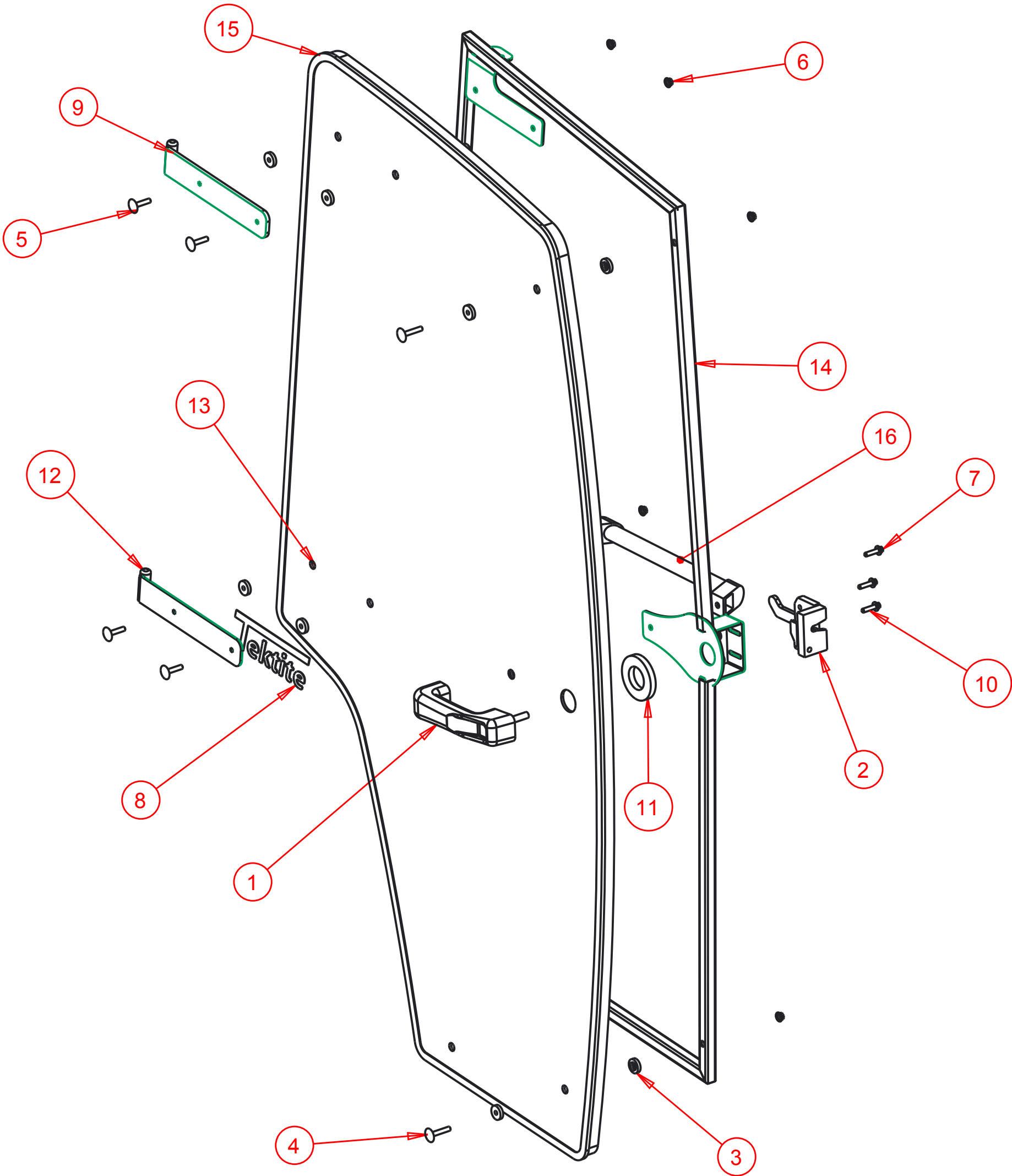
X.X =  $\pm 1/16"$   
Angular =  $\pm 1.0^\circ$

Tektite Manufacturing Inc.

24157 Hwy 3, Box 639, Winkler MB, R6W 4A8, Canada

Req'd:	CNC:	Description: <b>Left Door Assembly</b>		
Drawn By: <i>Daryl Furkalo</i>	Date: 2015-03-10	Units: <b>Imp.</b>	File Name: CCT225-ASM-009_OP	
Checked By:	Date:	Size: <b>B</b>		

Index	Service Part #	File Name	Description	Qty
1	A00-0001	DLP-HANDLE	Outside Push Button Handle	1
2	A00-0003	RIGHT-LATCH	Suicide Door Right Latch	1
3	A00-0013	TEKT-0009	5MM Bushing	13
4	A00-0018	STEP-BOLT1-4X1-1-2	Step Bolt, 1/4" x 1 1/2", MB	2
5	A00-0020	STEP-BOLT1-4X1-1-4	Step Bolt, 1/4" x 1 1/4", MB	4
6	A00-0021	FLANGE-NUT-1-4	Flange Nut, 1/4", YD	8
7	A00-0022	FLANGE_BOLT_M6X25	Flange Bolt, M6x25, YD	1
8	A00-0041	TEKTITE-DECAL	Tektite Cab Decal - Solid White	1
9	A00-0042	TEKT-ASM-001R	Right Cab Door Hinge Weldment, Upper	1
10	A00-0118	FLANGE_BOLT_1-4X1	Flange Bolt, 1/4" x 1", YD	2
11	A00-0177	TEKT-0068	Handle Washer Spacer	1
12	A00-0229	TEKT-ASM-029R	Right Door Hinge Weldment, Lower	1
13	B01-0005	CCT225-024	Door Glass	1
14	B01-0007	CCT225-ASM-006_RT	Right Cab Door Weldment	1
15	B01-0008	CCT225-053R	Door Weather Stripping	1
16	B01-0024	CCT225-080	Door Grab Handle, Bobcat CT235	1



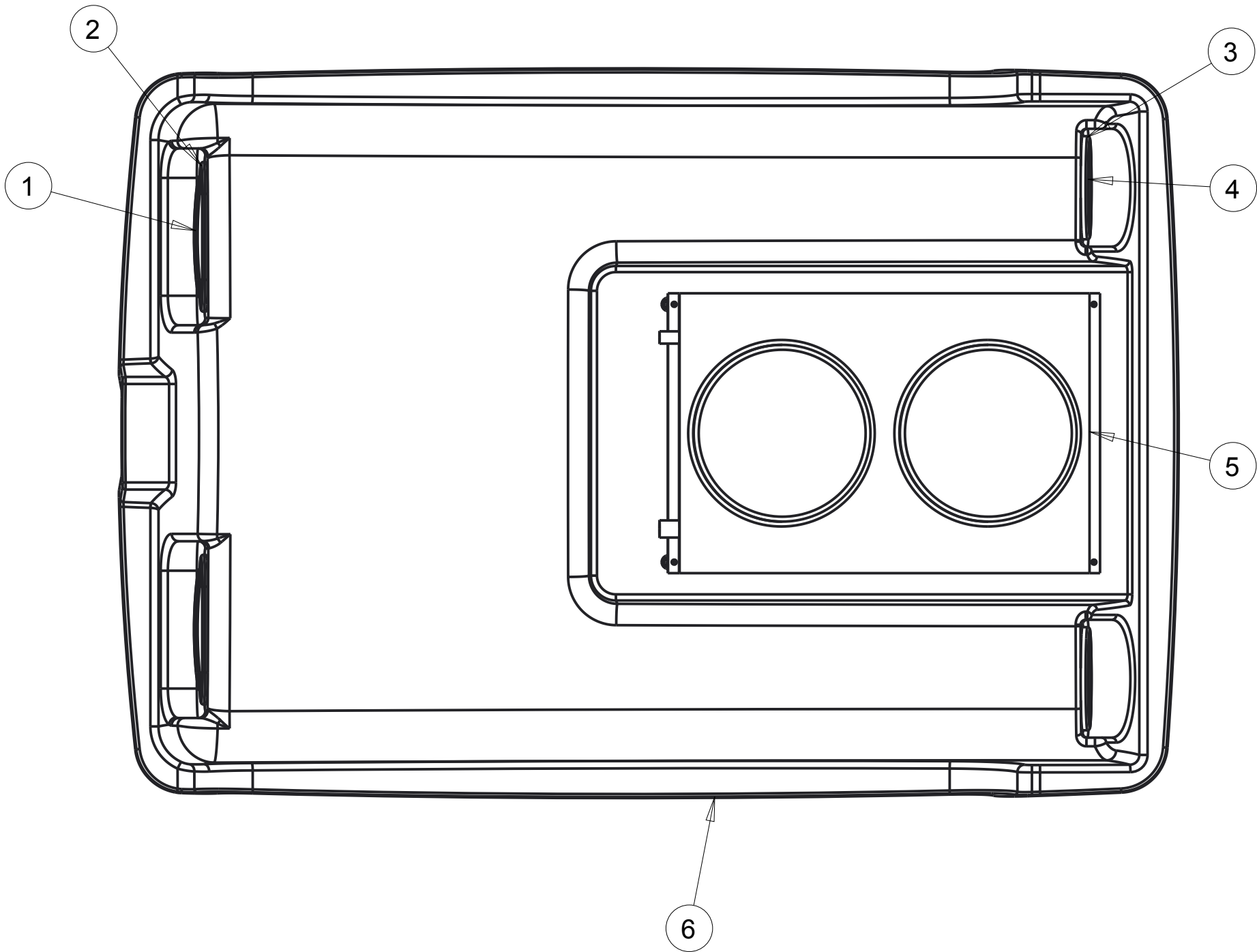
### Notice of Confidentiality

This material is property of Tektite Manufacturing Inc and is not to be used by the recipient for any purpose other than the purpose for which it was transmitted. The material remains the property of Tektite and shall be returned upon request. The material may not be reproduced or disclosed to third parties without the written consent of Tektite.

**Tolerances:**  
Unless otherwise specified  
X.X =  $\pm 1/16"$   
Angular =  $\pm 1.0^\circ$

Tektite Manufacturing Inc. 24157 Hwy 3, Box 639, Winkler MB, R6W 4A8, Canada				
Req'd:	CNC:	Description: <b>Right Door Assembly</b>		
Drawn By: <i>Daryl Furkalo</i>	Date: 2015-03-10	Units: <b>Imp.</b>	File Name: CCT225-ASM-O1O_OP	
Checked By:	Date:	Size: <b>B</b>		

Index	Service Part #	File Name	Description	Qty
1	A00-0008	TEKT-0077	Front Turn Signal Light LED, Amber	2
2	A00-0009	TEKT-0079	Oval LED Light Grommet	2
3	A00-0010	TEKT-0078	Round Grommet, LED Light	2
4	A00-0011	TEKT-0080	Round Turn Light	2
5	A00-0078	RED-DOT-CONDENSOR	Red Dot Condensor 77R1602	1
6	B01-0001	KUF2880-ROOF	Roof	1



### Notice of Confidentiality

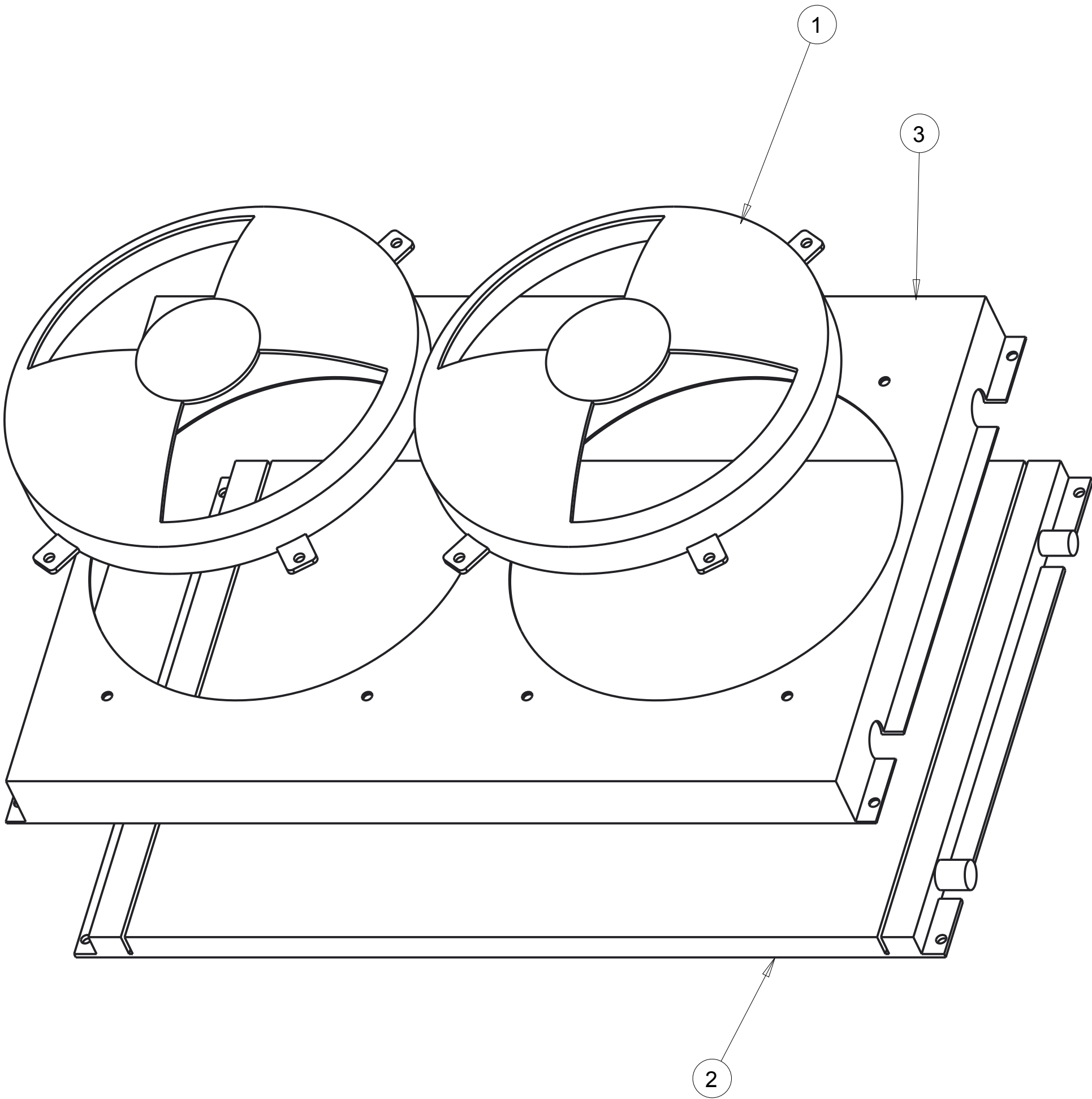
This material is property of Tektite Manufacturing Inc and is not to be used by the recipient for any purpose other than the purpose for which it was transmitted. The material remains the property of Tektite and shall be returned upon request. The material may not be reproduced or disclosed to third parties without the written consent of Tektite.

**Tolerances:**  
Unless otherwise specified  
X.X =  $\pm 1/16"$   
Angular =  $\pm 1.0^\circ$

Tektite Manufacturing Inc. 24157 Hwy 3, Box 639, Winkler MB, R6W 4A8, Canada				
Req'd:	CNC:	Description: Roof Assembly		
Drawn By: Daryl Furkalo	Date: 2013-02-01	Units: Imp.	File Name: KUF2880-ROOF-ASM	
Checked By:	Date:	Size: B		



Index	Service Part #	File Name	Description	Qty
1	A00-0166	TEKT-0103	Condensor Fan	2
2	A00-0220	TEKT-0101	Base Condenser Coil	1
3	A00-0221	TEKT-0102	Condensor Assembly Steel Shroud	1



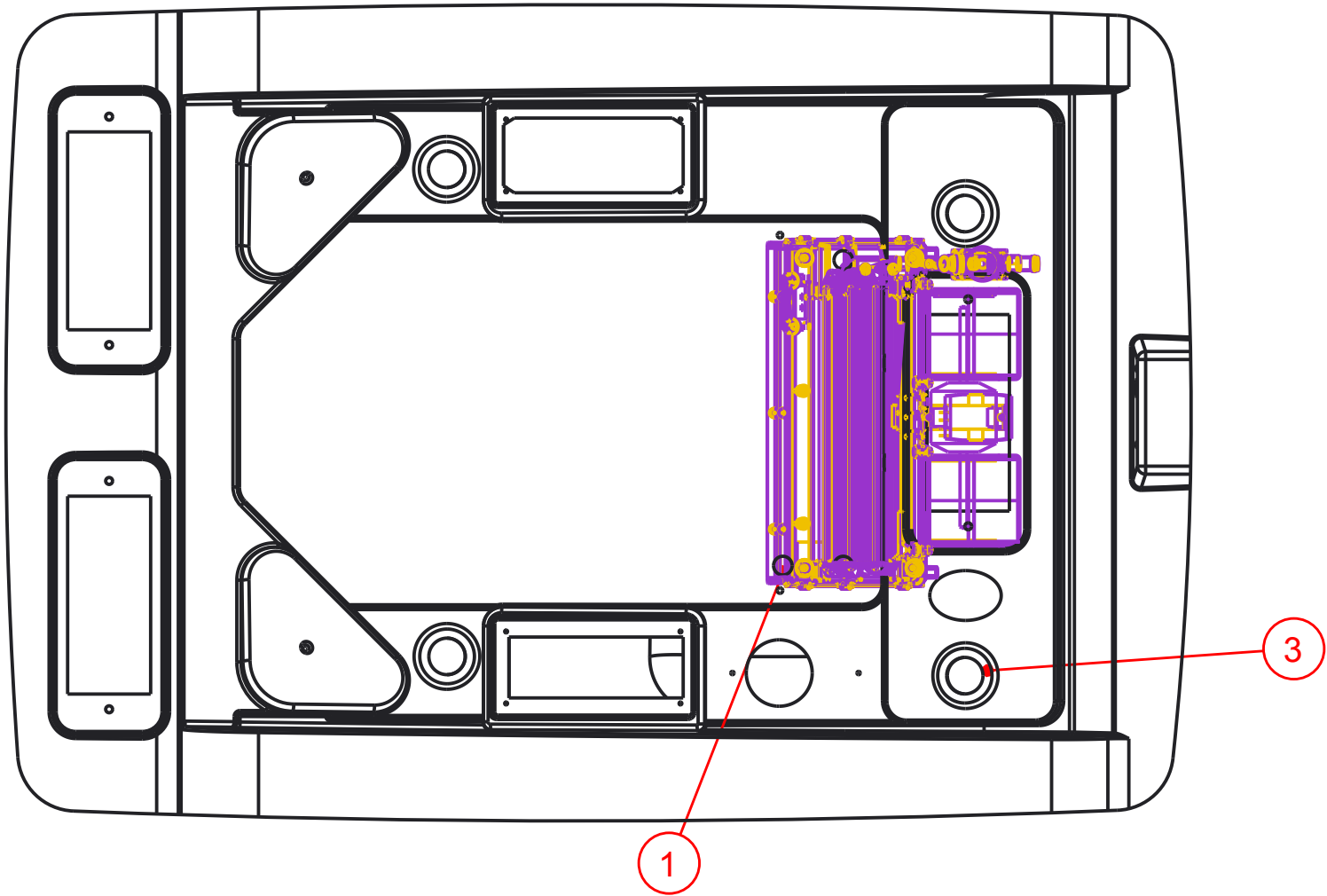
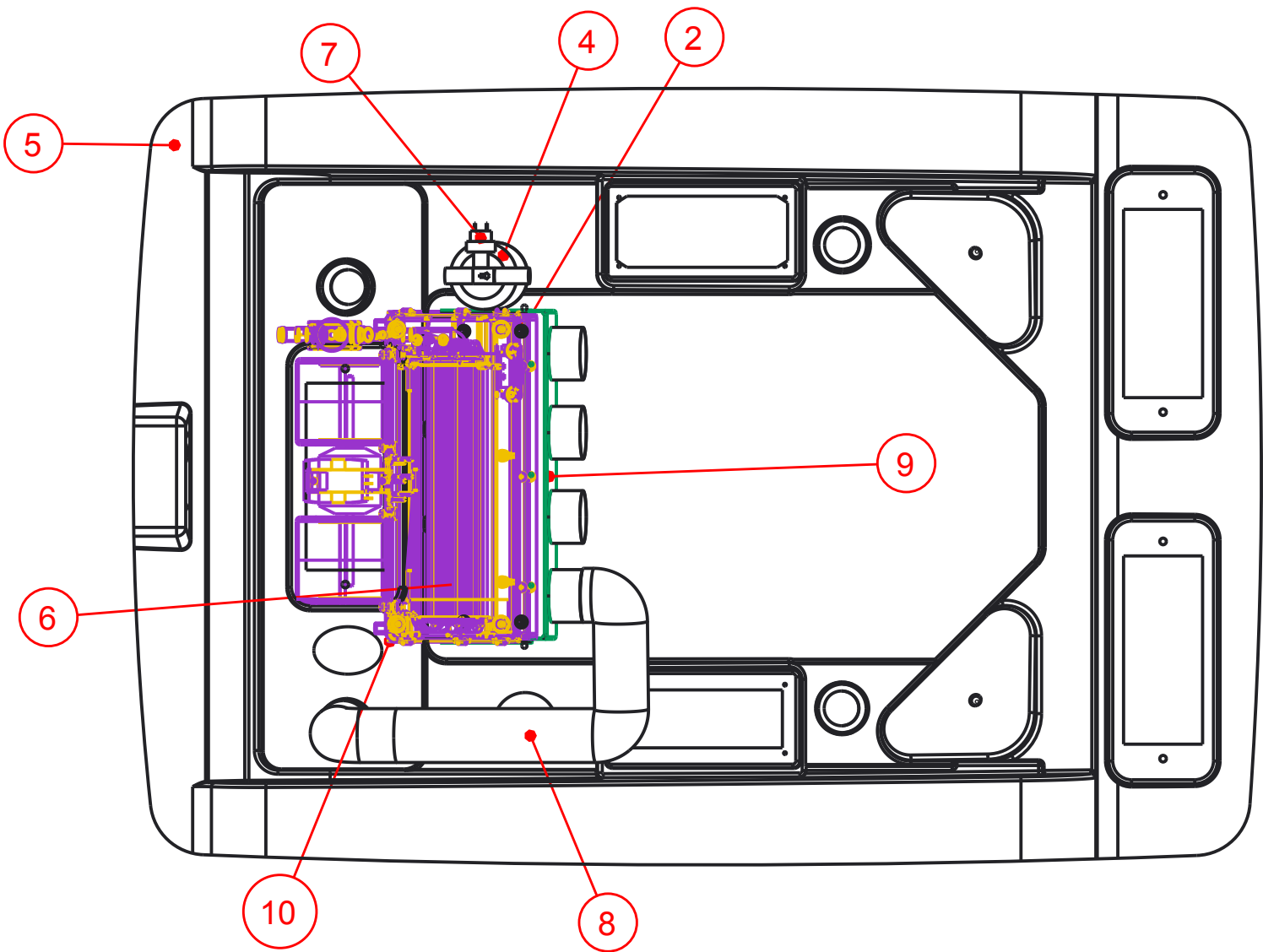
Notice of Confidentiality

This material is property of Tektite Manufacturing Inc and is not to be used by the recipient for any purpose other than the purpose for which it was transmitted. The material remains the property of Tektite and shall be returned upon request. The material may not be reproduced or disclosed to third parties without the written consent of Tektite.

**Tolerances:**  
Unless otherwise specified  
  
X.X = ± 1/16"  
Angular = ± 1.0°

Tektite Manufacturing Inc. 24157 Hwy 3, Box 639, Winkler MB, R6W 4A8, Canada					
Req'd:	CNC:	Description: Condensor Assembly Breakdown			
Drawn By: Daryl Furkalo	Date: 2013-07-04	Units: Imp.	File Name: TEKT-ASM-O26		
Checked By:	Date:	Size: B			

Index	Service Part #	File Name	Description	Qty
1	A00-0019	STEP-BOLT1-4X1	Step Bolt, 1/4" x 1", MB	4
2	A00-0021	FLANGE-NUT-1-4	Flange Nut, 1/4", YD	4
3	A00-0025	BALL-LOUVER	2 1/2" Ball Louver	4
4	A00-0028	TEKT-0088	Red Dot Drier	1
5	A00-0081	KUF2880-HEADLINER-REV1	Headliner	1
6	A00-0105	R-2300-2_090902	Heater A/C Blower Unit, 2300	1
7	A00-0171	TEKT-0089	Binary Switch	1
8	A00-0173	TEKT-0090	Louver Hose	1
9	A00-0204	TEKT-ASM-011	Louver Hose Mount Plate, 2300	1
10	A00-0205	TEKT-0008_REV1	Red Dot 2300 Mount Bracket	1



**Tektite Manufacturing Inc.**  
24157 Hwy 3, Box 639, Winkler MB, R6W 4A8, Canada

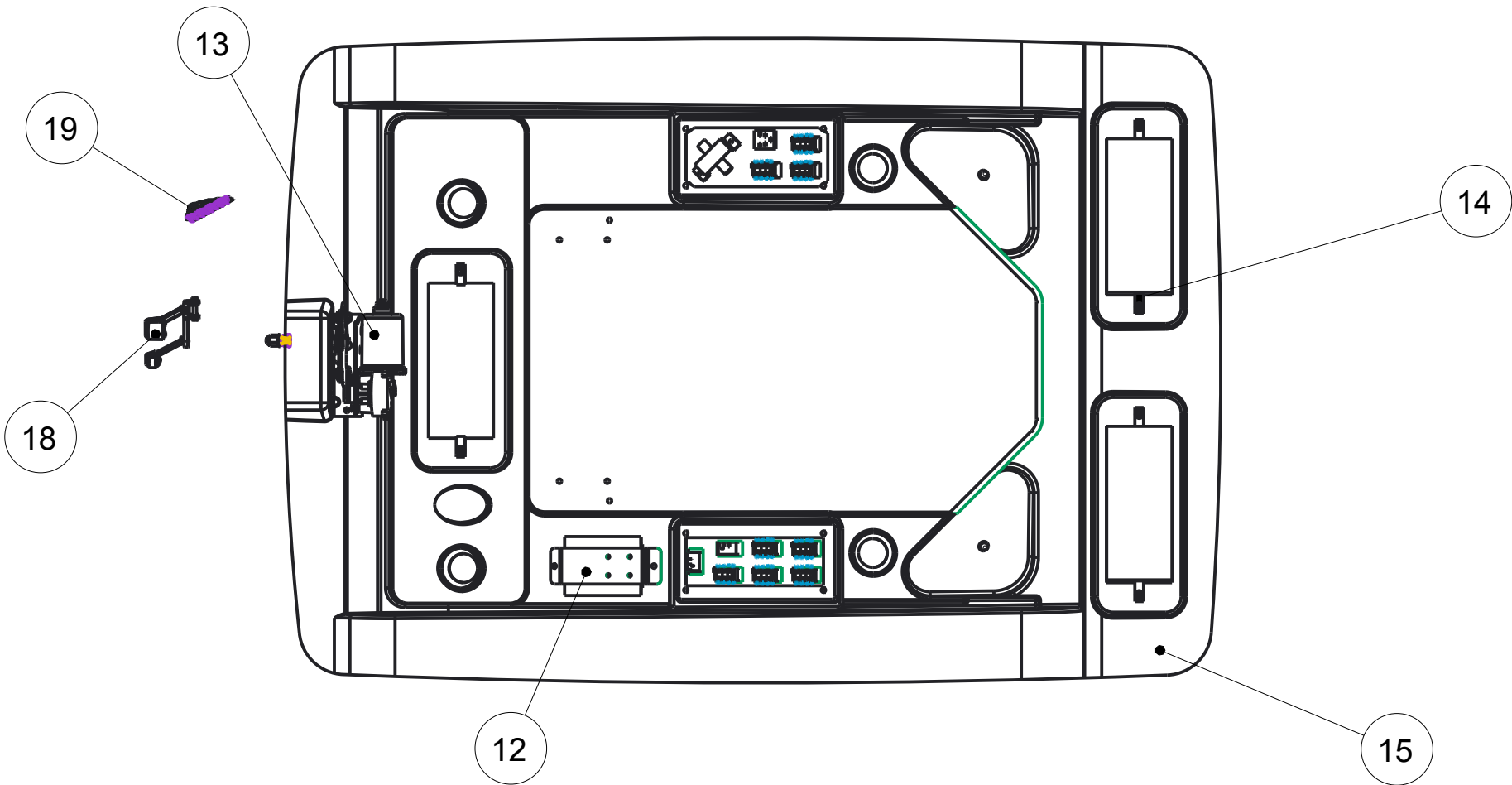
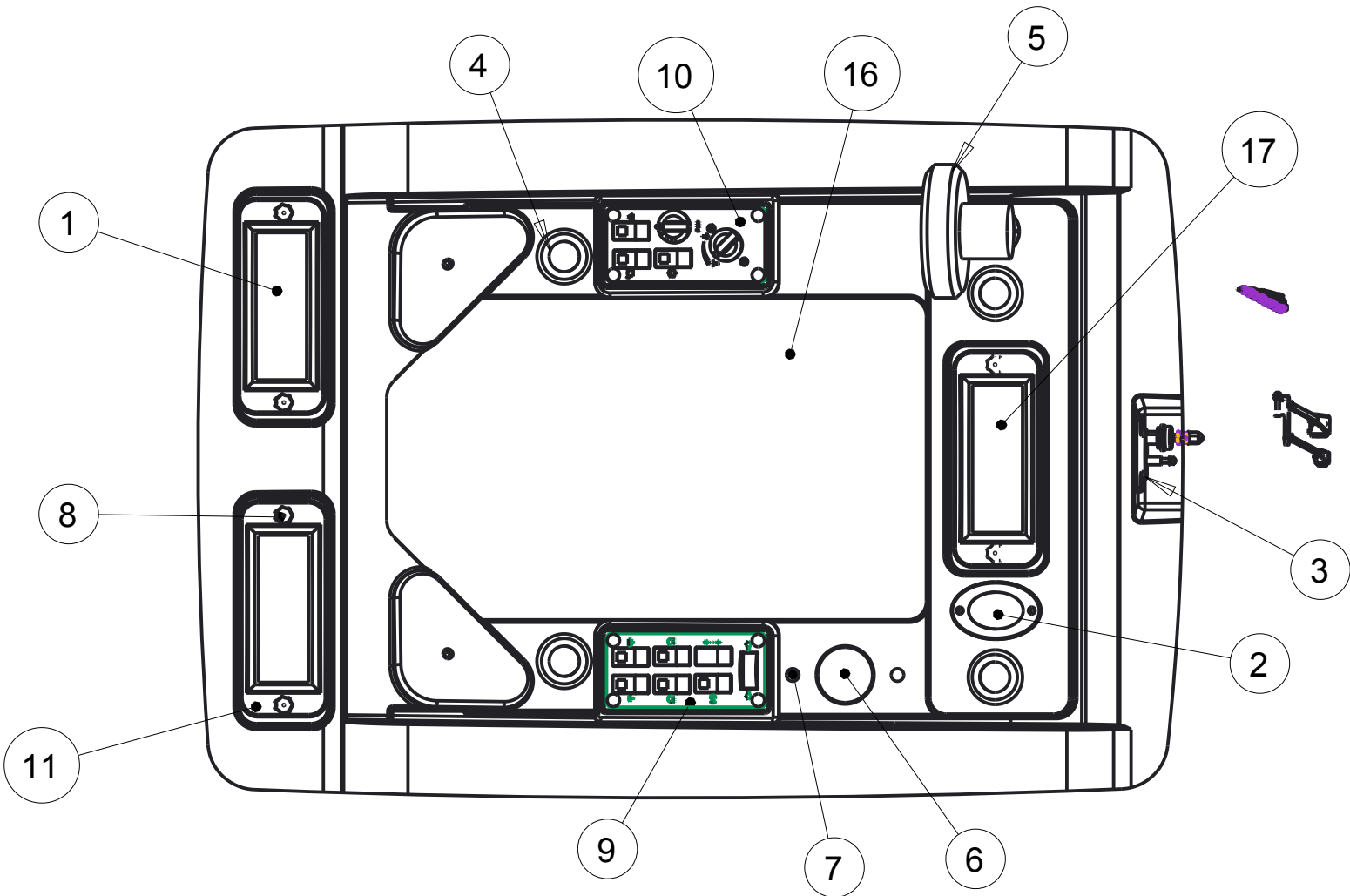
Notice of Confidentiality

This material is property of Tektite Manufacturing Inc and is not to be used by the recipient for any purpose other than the purpose for which it was transmitted. The material remains the property of Tektite and shall be returned upon request. The material may not be reproduced or disclosed to third parties without the written consent of Tektite.

**Tolerances:**  
Unless otherwise specified  
X.X =  $\pm 1/16"$   
Angular =  $\pm 1.0^\circ$

Req'd:	CNC:	Description: <b>A/C Compatible Additional Parts</b>			
Drawn By: <i>Daryl Furkalo</i>	Date: 2014-12-12	Units: <b>Imp.</b>	File Name: TEKT-ASM-O2O_AC-ASM		
Checked By:	Date:	Size: <b>B</b>			

Index	Service Part #	File Name	Description	Qty
1	A00-0006	TEKT-0074	Cabin Air Filter	2
2	A00-0016	TEKT-0075	Domelight LED	1
3	A00-0017	305-1002	Panto Mount Plate	1
4	A00-0025	BALL-LOUVER	2 1/2" Ball Louver	4
5	A00-0026	OSCILLATING-FAN	Oscillating Fan	1
6	A00-0038	TEKT-0076	3" Plug	1
7	A00-0055	TEKT-0019	Fir Tree Fastener	2
8	A00-0070	REID-KBP-262-KBP-265	Knob, Knurled, 1/4"	6
9	A00-0071	LEFT-SWITCHPLATE-ASM	Left Switchplate Assembly	1
10	A00-0072	TEKT-ASM-030	Right Switchplate Assembly, 2014 Update	1
11	A00-0073	FILTER-COVER	Filter Cover	3
12	A00-0074	TEKT-ASM-004	Fuse Block Assembly	1
13	A00-0075	WWJ-MOTOR-ASM	Front Wiper Motor, WWJ	1
14	A00-0076	TEKT-0026	1/4" Panel Nut	6
15	A00-0081	KUF2880-HEADLINER-REV1	Headliner	1
16	A00-0082	KUF2880-049	Headliner Upholstery	1
17	A00-0083	KUF2880-060	Front Filter Upholstery	1
18	A00-0140	PANTO_ARM_20	Wiper Arm, 20" Panto	1
19	A00-0150	BLADE_20	Wiper Blade, 20"	1



Tektite Manufacturing Inc.  
24157 Hwy 3, Box 639, Winkler MB, R6W 4A8, Canada

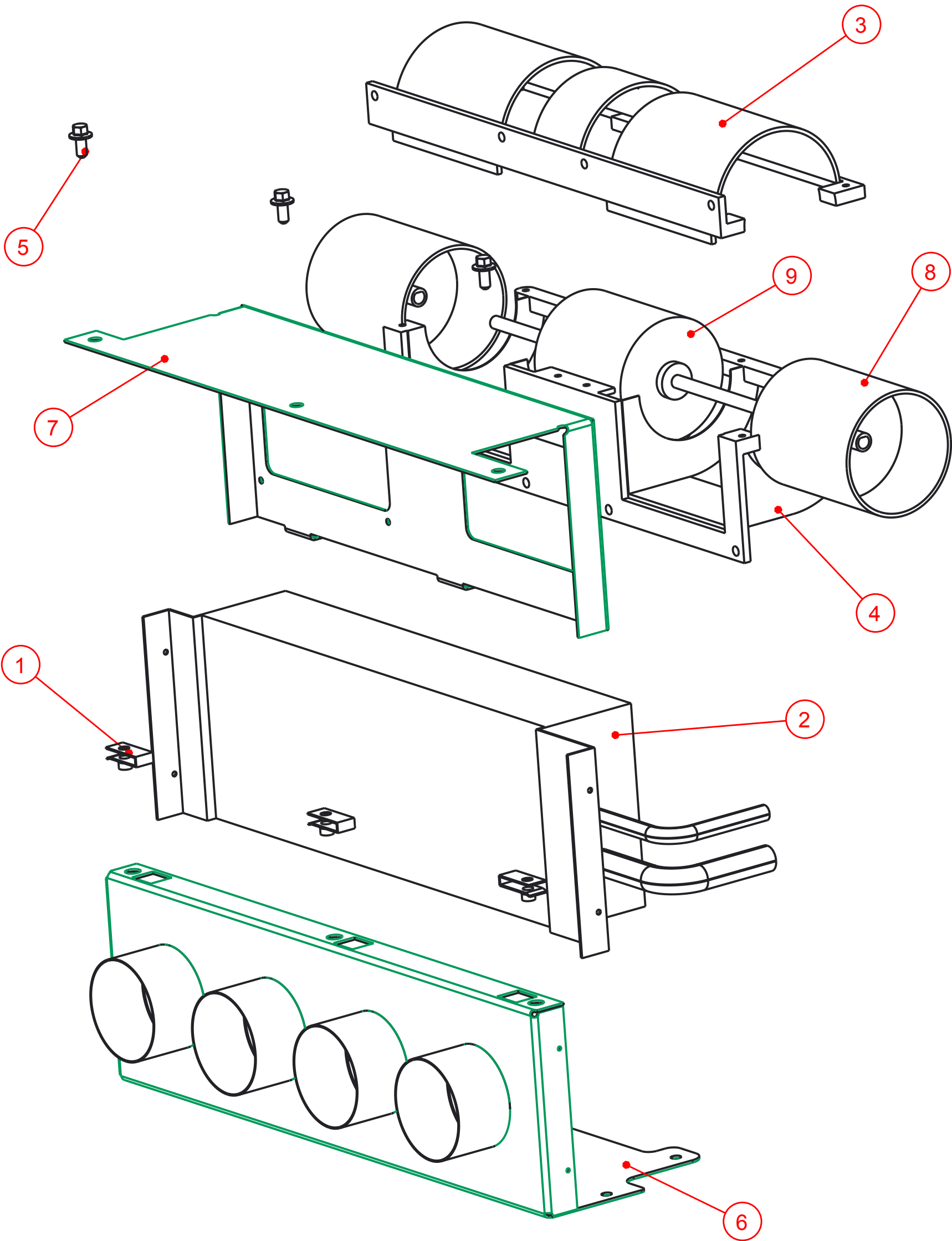
Notice of Confidentiality

This material is property of Tektite Manufacturing Inc and is not to be used by the recipient for any purpose other than the purpose for which it was transmitted. The material remains the property of Tektite and shall be returned upon request. The material may not be reproduced or disclosed to third parties without the written consent of Tektite.

Tolerances:  
Unless otherwise specified  
X.X = ± 1/16"  
Angular = ± 1.0°

Req'd:	CNC:	Description: Headliner Assembly, Compacts (20-20)		
Drawn By: Daryl Furkalo	Date: 2014-01-02	Units: Imp.	File Name: TEKT-ASM-033	
Checked By:	Date:	Size: B		

Index	Service Part #	File Name	Description	Qty
1	A00-0076	TEKT-0026	1/4" Panel Nut	3
2	A00-0089	TEKT-0059	Heater Core	1
3	A00-0090	TEKT-0065	Upper Blower Housing	1
4	A00-0091	TEKT-0066	Blower Housing Lower	1
5	A00-0100	FLANGE_BOLT_1-4X1-2	Flange Bolt, 1/4" x 1/2", YD	3
6	A00-0157	TEKT-ASM-015	Bottom Heater Shroud Weldment	1
7	A00-0158	TEKT-ASM-014	Top Heater Shroud Weldment	1
8	A00-0159	TEKT-0067	Rotary Squirrel Cage	2
9	A00-0162	TEKT-0081	Fan Motor	1



### Notice of Confidentiality

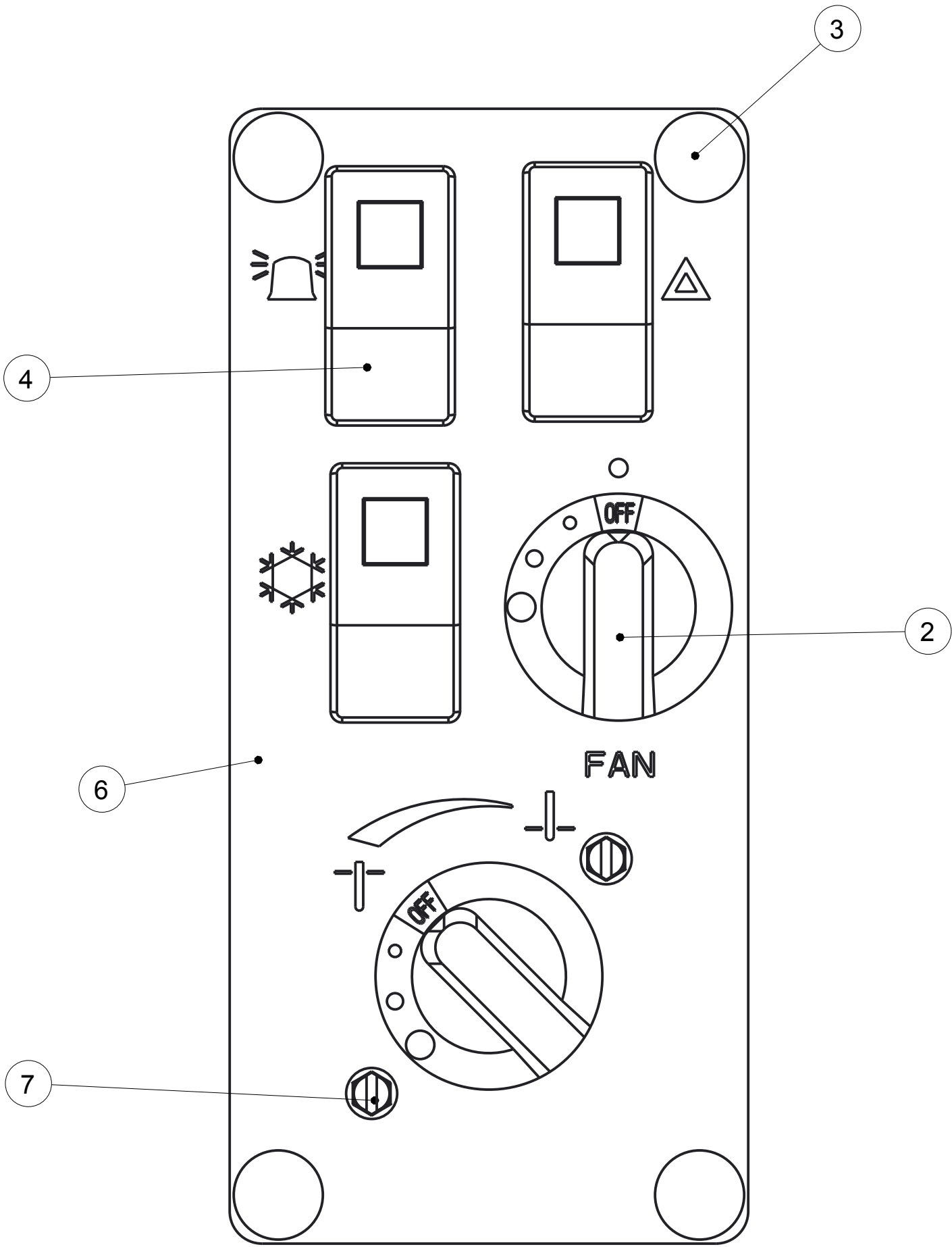
This material is property of Tektite Manufacturing Inc and is not to be used by the recipient for any purpose other than the purpose for which it was transmitted. The material remains the property of Tektite and shall be returned upon request. The material may not be reproduced or disclosed to third parties without the written consent of Tektite.

**Tolerances:**  
Unless otherwise specified  
X.X =  $\pm 1/16"$   
Angular =  $\pm 1.0^\circ$

Tektite Manufacturing Inc. 24157 Hwy 3, Box 639, Winkler MB, R6W 4A8, Canada				
Req'd:	CNC:	Description: Tektite In-House Heater Assembly		
Drawn By: Daryl Furkalo	Date: 2014-09-17	Units: Imp.	File Name: TEKT-ASM-016_OP	
Checked By:	Date:	Size: B		



Index	Service Part #	File Name	Description	Qty
1	A00-0007	FAN-SWITCH	4-Position Fan Switch	1
2	A00-0054	TEKT-0018	Fan Speed Control Knob	2
3	A00-0055	TEKT-0019	Fir Tree Fastener	4
4	A00-0065	TEKT-ASM-005	On-Off Switch w/Lens	3
5	A00-0252	TEKT-0117	Water Valve Directly on Switch	1
6	A00-0253	TEKT-0119	Right Switchplate Decal, 2014 Update	1
7	A00-0282	SCREW-3-16X3-4	Screw, Self-Tap, 3/16" x 3/4"	2
8	A00-0283	TEKT-0118	Right Switchplate, 2014 Redesign	1



SCALE 1.000

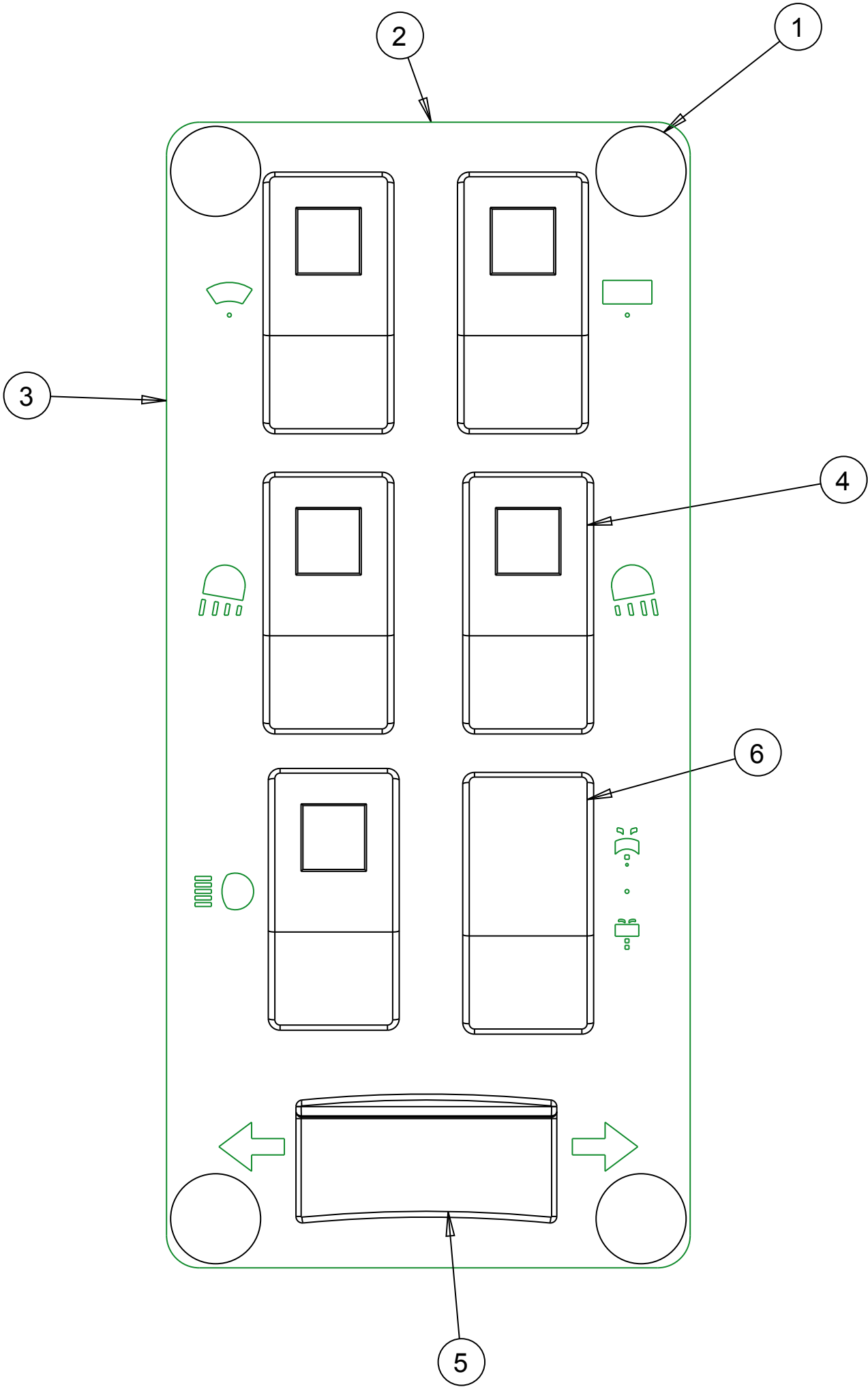
Notice of Confidentiality

This material is property of Tektite Manufacturing Inc and is not to be used by the recipient for any purpose other than the purpose for which it was transmitted. The material remains the property of Tektite and shall be returned upon request. The material may not be reproduced or disclosed to third parties without the written consent of Tektite.

Tolerances:  
Unless otherwise specified  
X.X = ± 1/16"  
Angular = ± 1.0°

Tektite Manufacturing Inc. 24157 Hwy 3, Box 639, Winkler MB, R6W 4A8, Canada					
Req'd:	CNC:	Description: New Valve Design Switch Plate, 2014			
Drawn By: Daryl Furkalo	Date: 2014-02-05	Units: Imp.	File Name: TEKT-ASM-O3O		
Checked By:	Date:	Size: B			

Index	Service Part #	File Name	Description	Qty
1	A00-0055	TEKT-0019	Fir Tree Fastener	4
2	A00-0063	LEFT-CAB-SWITCHPLATE	Left Switchplate	1
3	A00-0064	LEFT-CAB-SWITCHPLATE-DECAL	Left Switchplate Decal	1
4	A00-0065	TEKT-ASM-005	On-Off Switch w/Lens	5
5	A00-0066	TEKT-ASM-006	On-Off-On Rocker No Lens	1
6	A00-0067	TEKT-ASM-007	Mom-Off-Mom Rocker Switch	1



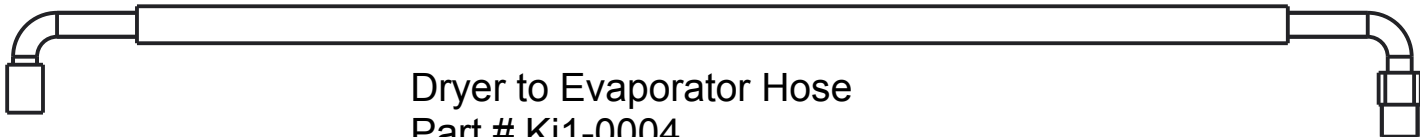
SCALE 1.000

Notice of Confidentiality

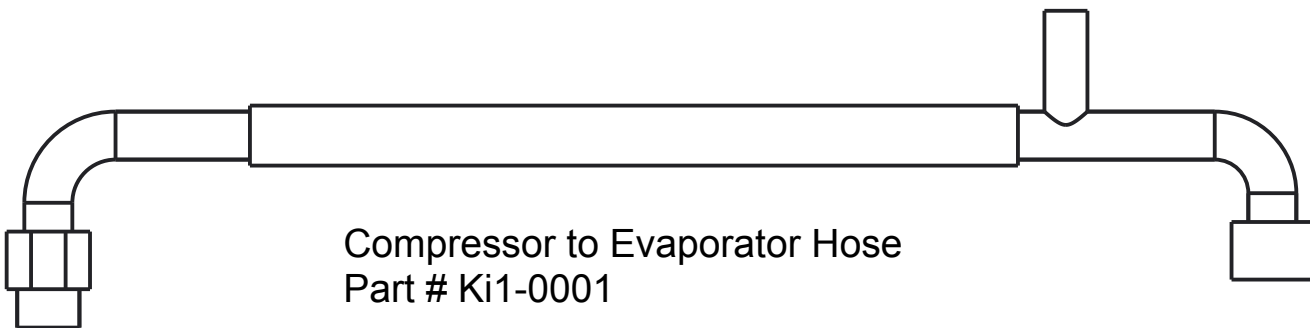
This material is property of Tektite Manufacturing Inc and is not to be used by the recipient for any purpose other than the purpose for which it was transmitted. The material remains the property of Tektite and shall be returned upon request. The material may not be reproduced or disclosed to third parties without the written consent of Tektite.

**Tolerances:**  
Unless otherwise specified  
X.X = ± 1/16"  
Angular = ± 1.0 °

Tektite Manufacturing Inc. 24157 Hwy 3, Box 639, Winkler MB, R6W 4A8, Canada					
Req'd:	CNC:	Description: Operator Manual Switch Plate Left			
Drawn By: Daryl Furkalo	Date: 2009-03-09	Units: Imp.	File Name: LEFT-SWITCHPLATE-ASM		
Checked By:	Date:	Size: B			



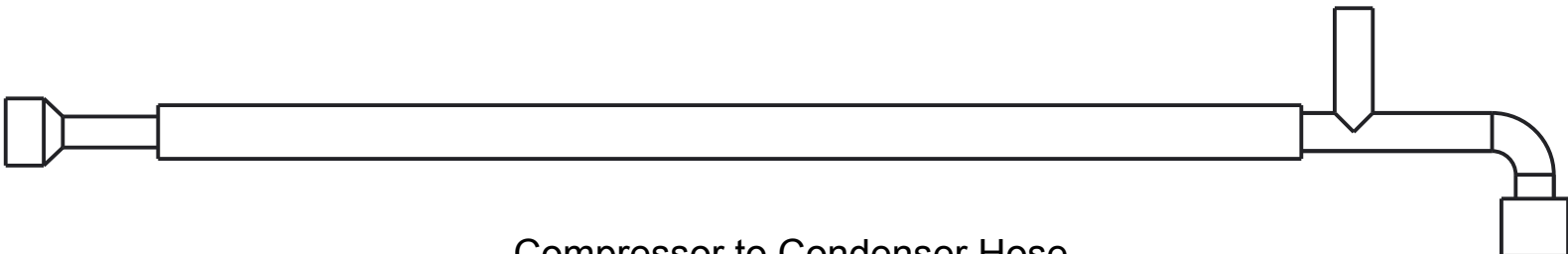
Dryer to Evaporator Hose  
Part # Ki1-0004



Compressor to Evaporator Hose  
Part # Ki1-0001



Condenser to Dryer Hose  
Part # Ki1-0003



Compressor to Condenser Hose  
Part # Ki1-0002

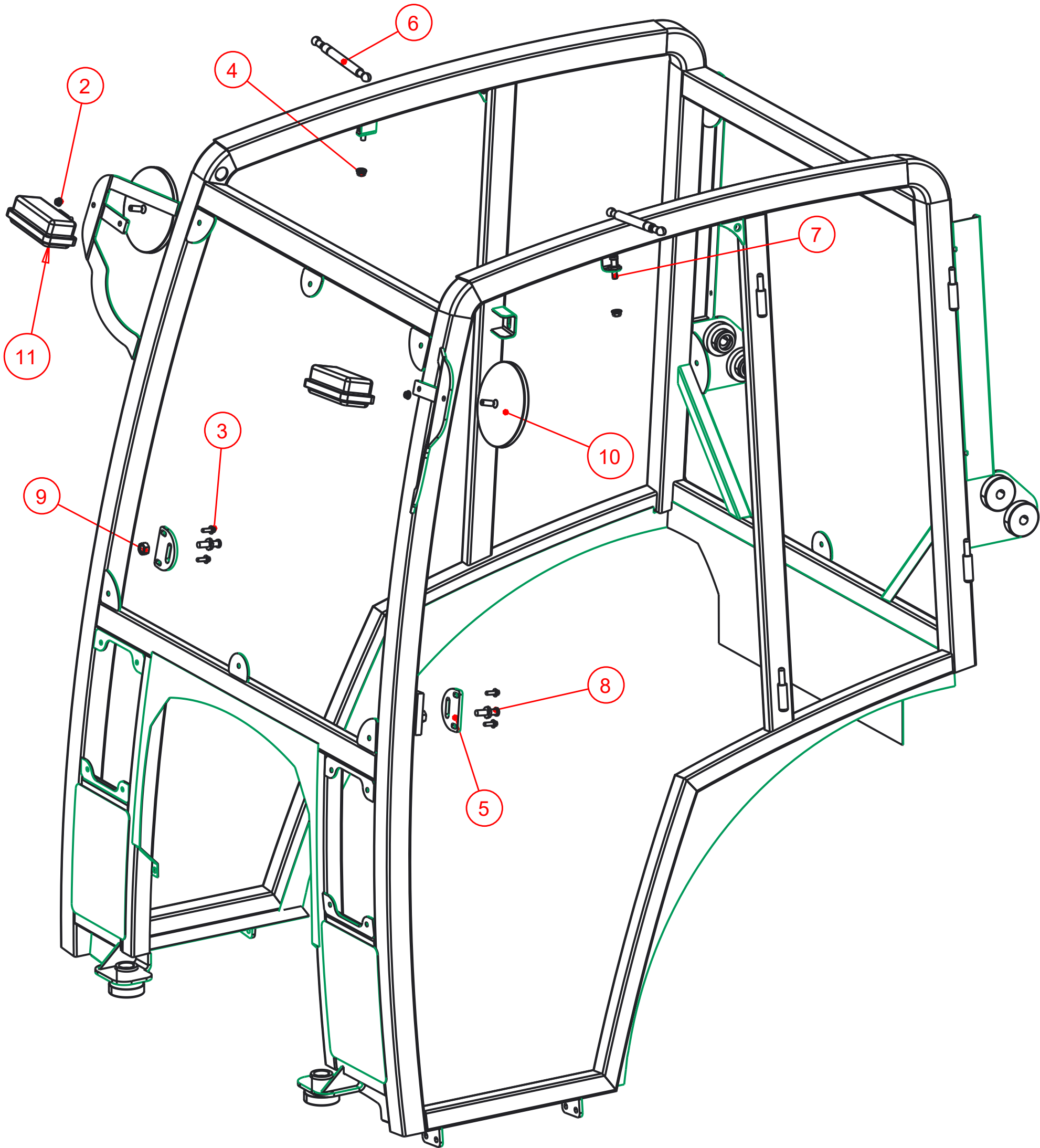
Notice of Confidentiality

This material is property of Tektite Manufacturing Inc and is not to be used by the recipient for any purpose other than the purpose for which it was transmitted. The material remains the property of Tektite and shall be returned upon request. The material may not be reproduced or disclosed to third parties without the written consent of Tektite.

**Tolerances:**  
Unless otherwise specified  
X.X =  $\pm 1/16"$   
Angular =  $\pm 1.0^\circ$

Tektite Manufacturing Inc. 24157 Hwy 3, Box 639, Winkler MB, R6W 4A8, Canada					
Req'd:	1 req		Description: A/C Hoses Breakdown		
Drawn By:	Daryl Furkalo		Units:	Imp.	
Date:	2013-05-29		File Name:		
Checked By:			Size:	B	
Date:					

Index	Service Part #	File Name	Description	Qty
1		KIO35-ASM-03		1
2	A00-0021	FLANGE-NUT-1-4	Flange Nut, 1/4", YD	2
3	A00-0023	FLANGE_BOLT_1-4X3-4	Flange Bolt, 1/4" x 3/4", YD	4
4	A00-0059	FLANGE-NUT-5-16	Flange Nut, 5/16", YD	2
5	A00-0061	TEKT-0021	Striker Mounting Plate	2
6	A00-0084	TEKT-0070	Gas Shock	2
7	A00-0085	TEKT-0069	Gas Shock Stud	2
8	A00-0101	STRIKER-PIN	Striker Pin	2
9	A00-0103	HEX-NUT-M12X1	Hex Nut, M12 x 1.0, YD	2
10	A00-0141	ROUND_MIRROR_6_INCH	External 6" Mirror	2
11	A00-0371	TEKT-0175	New LED Work Light (Blazer Intl)	2



**Tektite Manufacturing Inc.**  
24157 Hwy 3, Box 639, Winkler MB, R6W 4A8, Canada

Notice of Confidentiality

This material is property of Tektite Manufacturing Inc and is not to be used by the recipient for any purpose other than the purpose for which it was transmitted. The material remains the property of Tektite and shall be returned upon request. The material may not be reproduced or disclosed to third parties without the written consent of Tektite.

**Tolerances:**  
Unless otherwise specified  
X.X =  $\pm 1/16"$   
Angular =  $\pm 1.0^\circ$

Req'd:				CNC:				Description:			
Drawn By:				Date:				Units:			
Checked By:				Date:				File Name:			
Daryl Furkalo				2016-11-23				Imp. KIO35-ASM-04			
								Size:			
								B			